

Potential Relevance of α_1 -Adrenergic Receptor Autoantibodies in Refractory Hypertension

Katrin Wenzel^{1,9}, Hannelore Haase^{2,9}, Gerd Wallukat^{2,9}, Wolfgang Derer¹, Sabine Bartel², Volker Homuth¹, Florian Herse¹, Norbert Hubner², Herbert Schulz², Marion Janczikowski¹, Carsten Lindschau³, Christoph Schroeder¹, Stefan Verlohren¹, Ingo Morano², Dominik N. Muller², Friedrich C. Luft^{1,2}, Rainer Dietz¹, Ralf Dechend^{1,*}, Peter Karczewski^{4,†}

1 Medical Faculty of the Charité, Franz-Volhard Clinic and HELIOS Klinikum-Berlin, Experimental and Clinical Research Center, Berlin, Germany, **2** Max Delbrück Center for Molecular Medicine, Berlin, Germany, **3** Department of Nephrology, Hannover Medical School, Hannover, Germany, **4** E. R. D. E. v, Berlin, Germany

Abstract

Background: Agonistic autoantibodies directed at the α_1 -adrenergic receptor (α_1 -AAB) have been described in patients with hypertension. We implied earlier that α_1 -AAB might have a mechanistic role and could represent a therapeutic target.

Methodology/Principal Findings: To pursue the issue, we performed clinical and basic studies. We observed that 41 of 81 patients with refractory hypertension had α_1 -AAB; after immunoadsorption blood pressure was significantly reduced in these patients. Rabbits were immunized to generate α_1 -adrenergic receptor antibodies (α_1 -AB). Patient α_1 -AAB and rabbit α_1 -AB were purified using affinity chromatography and characterized both by epitope mapping and surface plasmon resonance measurements. Neonatal rat cardiomyocytes, rat vascular smooth muscle cells (VSMC), and Chinese hamster ovary cells transfected with the human α_{1A} -adrenergic receptor were incubated with patient α_1 -AAB and rabbit α_1 -AB and the activation of signal transduction pathways was investigated by Western blot, confocal laser scanning microscopy, and gene expression. We found that phospholipase A2 group IIA (*PLA2-IIA*) and L-type calcium channel (*Cacna1c*) genes were upregulated in cardiomyocytes and VSMC after stimulation with both purified antibodies. We showed that patient α_1 -AAB and rabbit α_1 -AB result in protein kinase C alpha activation and transient extracellular-related kinase (EKR1/2) phosphorylation. Finally, we showed that the antibodies exert acute effects on intracellular Ca^{2+} in cardiomyocytes and induce mesentery artery segment contraction.

Conclusions/Significance: Patient α_1 -AAB and rabbit α_1 -AB can induce signaling pathways important for hypertension and cardiac remodeling. Our data provide evidence for a potential clinical relevance for α_1 -AAB in hypertensive patients, and the notion of immunity as a possible cause of hypertension.

Citation: Wenzel K, Haase H, Wallukat G, Derer W, Bartel S, et al. (2008) Potential Relevance of α_1 -Adrenergic Receptor Autoantibodies in Refractory Hypertension. PLoS ONE 3(11): e3742. doi:10.1371/journal.pone.0003742

Editor: Timothy Secomb, University of Arizona, United States of America

Received: July 11, 2008; **Accepted:** October 28, 2008; **Published:** November 17, 2008

Copyright: © 2008 Wenzel et al. This is an open-access article distributed under the terms of the Creative Commons Attribution License, which permits unrestricted use, distribution, and reproduction in any medium, provided the original author and source are credited.

Funding: The Deutsche Forschungsgemeinschaft supported RD, DNM, and FCL with separate grants-in-aid. Part of this work was supported by the ProFIT initiative of the European Community.

Competing Interests: The authors have declared that no competing interests exist.

* E-mail: ralf.dechend@charite.de

⁹ These authors contributed equally to this work.

[†] These authors also contributed equally to this work.

Introduction

Autoimmunity with agonistic autoantibodies directed at endogenous receptors can cause Graves' disease through the thyrotropin receptor and promotes insulin release via CD38 [1,2]. Agonistic antibodies that stimulate the angiotensin (Ang) II AT1 receptor have been described in preeclampsia and humorally mediated kidney transplant rejection [3,4]. The most compelling case for agonistic autoantibody-mediated disease has been that of β_1 -adrenergic receptor autoantibodies observed in patients with dilated cardiomyopathy and in a rat model fulfilling Koch's postulates [5]. However, autoantibodies could also merely be an epiphenomenon in many instances; convincing data are still pending.

α_1 -adrenergic receptor (α_1 -AR) signaling mediates several cardiovascular actions such as vascular smooth muscle cell

(VSMC) contraction, cardiac inotropy, hypertrophy, and remodeling [6]. α_1 -AR are predominantly located postsynaptically on VSMC, where they are the targets of circulating norepinephrine and regulate VSMC contraction [7]. Sympathetic over-activity in hypertension and accompanying excess stimulation of postsynaptic α_1 -AR supports the use of selective α_1 -AR inhibitors as antihypertensive drugs. However, α_1 -AR blockade was discontinued in the Antihypertensive and Lipid-Lowering Treatment to Prevent Heart Attack Trial (ALLHAT) because of a putative increased risk for heart failure [8], a highly controversial decision that has been sharply criticized [9]. The Valsartan Heart Failure Trial 2 (Val-HeFT2) showed that α_1 -AR blockade was beneficial in heart failure. α_1 -AR can contribute to cardiomyocyte hypertrophy. Huang et al demonstrated a protective effect of the α_{1A} -AR-subtype in cardiac myocytes and defined an extracellular-

regulated kinase (ERK) signaling pathway that is required for myocyte survival [10]. Hearts of α_1 -AR gene-deleted mice had increased interstitial fibrosis, increased apoptosis, and failed induction of the fetal hypertrophic gene program after pressure overload, indicating that α_{1A} -AR are required for myocardial adaptation to stress [11,12].

Others and we have described agonistic autoantibodies (α_1 -AAB) against the α_1 -AR [13,14,15]. Earlier, we examined immunoglobulin fractions in 54 severely hypertensive patients and found α_1 -AAB in 44% [15]. However, 12% of normotensive control subjects also harbored α_1 -AAB. Zhou et al. immunized rats with a peptide from the α_1 -AR epitope [16]. The rats developed α_1 -AR antibodies (α_1 -AB) and cardiac hypertrophy. However, the link between α_1 -AB formation and cardiac remodeling remains unclear. We have now performed additional studies to elucidate the pathophysiological relevance of α_1 -AAB. We show that removal of α_1 -AAB with immunoabsorption is feasible and lowers blood pressure. We raised α_1 -AB in rabbit and purified the α_1 -AB from rabbits and α_1 -AAB from patients by affinity chromatography. After confirming binding and functional specificity of the isolated rabbit α_1 -AB and human α_1 -AAB, we performed gene expression analysis in cardiomyocytes and vascular smooth muscle cells (VSMC). We show that both rabbit α_1 -AB and human α_1 -AAB can evoke calcium signaling and contract vessel preparations via protein kinase C alpha (PKC- α) activation and transient extracellular-related kinase (ERK 1/2) phosphorylation. Our data suggest that human α_1 -AAB can induce signaling pathways involved in hypertension and cardiac remodeling, suggesting a potential clinical relevance of α_1 -AAB.

Results

We analyzed α_1 -AAB in 81 patients with refractory hypertension, who required ≥ 3 antihypertensive medications. Severe hypertension-induced target organ damage was present in every patient, including fundoscopic changes, cardiac abnormalities, and kidney damage. Forty-one patients (51%) featured α_1 -AAB as assessed by cardiomyocyte contraction assay. Microalbuminuria was detected in 33%, diastolic dysfunction in 87%, left ventricular (LV) hypertrophy in 85%, and reduced ejection fraction in 13% of α_1 -AAB positive patients. The patient characteristics are outlined in Table 1.

Table 1. Clinical features of the patients classified as α_1 -AR-AA positive or negative.

α_1 -AAB	Positive	Negative
Number	41	40
Age range	46–81 years	42–81 years
Male	59%	60%
Female	41%	40%
Medication classes	4.3	4.7
Goal blood pressure	77%	76%
Heart failure	64%	57%
Reduced ejection fraction	13%	24%
Diastolic dysfunction	87%	81%
Left ventricular hypertrophy	85%	76%
Microalbuminuria	33%	36%

doi:10.1371/journal.pone.0003742.t001

Figure 1 shows data from the five α_1 -AAB positive patients undergoing immunoabsorption. The treatments were performed daily for 5 days. The cardiomyocyte contraction assay documented gradually decreasing α_1 -AAB activity during the course of the five immunoabsorptions (Figure 1A, B). At the end of five days, the activity was in the normal range. The decreased α_1 -AAB activity persisted for the 180 day observation period (Figure 1C). Blood pressure recordings performed before and after 5 days of treatment showed a significant reduction in mean arterial pressure (MAP), compared to initial values that remained significantly reduced for the observation period of 180 days (Figure 1D).

α_1 -AAB were directed against the first extracellular loop (eL1) in 24% and against the second extracellular loop (eL2) in 27% of the hypertensive patients (Figure 2A). Epitope mapping for the first and second extracellular loop of the α_{1A} -AR by cardiac contraction assay is shown in Figure 2B and C. Overlapping peptide sequences were tested for competition in cardiac contraction assay. For extracellular loop 1 (eL1) the peptide sequence P1 (YWAFGR) diminished the spontaneous beating rate response completely. The peptide sequence P2 (APEDET) competed for the antibody extracellular loop 2 (eL2) effect. Since activating autoantibodies against the second loop have already been described for the AT1-R and β_1 -AR receptor, we analyzed α_1 -AAB against the second extracellular loop of α_{1A} -AR in this study.

We purified α_1 -AAB from patients by affinity chromatography using the peptide of the second extracellular loop of the α_{1A} -AR. We then used surface plasmon resonance (SPR) measurements to determine the binding affinity and specificity of purified autoantibody fractions. Sensorgrams, depicted in Figure 3, demonstrate that the antibodies displayed a high binding affinity ($K_d \sim 50$ nM) to the biotinylated peptide corresponding to eL2 of the α_1 -AR immobilized to the SA-sensorchip. This affinity-purified antibody fraction also showed weak cross-reactivity with the biotinylated peptide corresponding to the eL1 of the α_1 -AR (Figure 3A). However, this binding was negligible compared to the strong eL2 interaction.

We next raised a peptide antibody against the second extracellular loop of the α_1 -AR (rabbit α_1 -AB) and purified the antibody on the same peptide-containing affinity matrix. In SPR experiments, the rabbit α_1 -AB produced regular association and dissociation kinetics reaching a signal of ~ 2500 RU at a concentration of 80 $\mu\text{g}/\text{ml}$ (Figure 3B). Purified α_1 -AAB from patients and rabbit α_1 -AB increased the beating rate of rat cardiomyocytes. This effect was dose-dependent (Figure 3C and D). The maximal response was obtained at an antibody dilution of 1:200 (0.5 and 0.6 $\mu\text{g}/\text{ml}$ medium, respectively). The positive chronotropic effect was blocked by the α_1 -AR antagonist prazosin (1 μM).

To elucidate the molecular pathways induced by α_1 -AAB, we performed gene expression studies. We used Affymetrix microarrays for quantification of mRNA expression in cardiomyocytes and VSMC after treatment with purified α_1 -AAB isolated from three different patients, rabbit α_1 -AB, human control IgG, and the α_1 -AR agonist phenylephrine (PE) for 24 h. We identified two genes with increased expression in the Affymetrix array that we then verified by TaqMan RT-PCR. These genes were *PLA2-IIA* and *Cacna1c*, as shown in Table 2. The upregulation of both genes was inhibited by the α_1 -AR antagonist prazosin while no changes in gene expression were observed after the treatment with the control IgG.

We tested whether or not α_1 -AAB from patients and rabbit α_1 -AB could elicit Ca^{2+} signals. Figure 4A shows the reaction of neonatal cardiomyocytes intracellular Ca^{2+} transients in response to the addition of the purified patient α_1 -AAB. There was a fast increase in the 340 nm/380 nm ratio, which peaked at less than 60 seconds and declined within 2 minutes to a plateau value

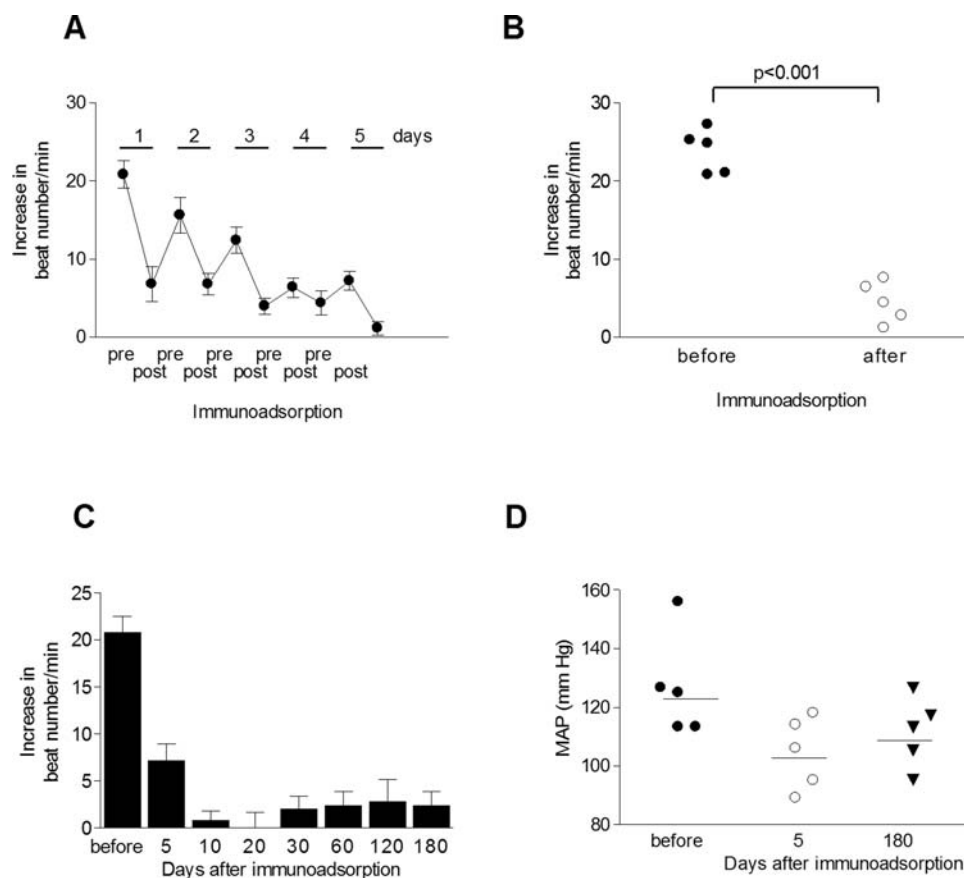


Figure 1. Effects of immunoadsorption on α_1 -AAB and blood pressure. (A) Ordinate shows neonatal cardiomyocyte spontaneous beating rate; abscissa shows response to immunoadsorption performed on a representative patient. The α_1 -AAB activity decreased with every immunoadsorption with a total decrease in response over time. (B) Figure shows the initial spontaneous beating rate (closed circles). After five immunoadsorptions, this response is reduced to basal values (open circles) in all 5 patients. (C) Mean response of a representative patient in cardiomyocyte contraction assay over time to immunoadsorption is shown. (D) Mean arterial pressure (MAP) was measured 5 and 180 days after immunoadsorption. MAP was significantly reduced compared to before immunoadsorption. doi:10.1371/journal.pone.0003742.g001

slightly above the control level before the addition of the α_1 -AAB. Thus, α_1 -AAB potentially induced a rise in intracellular Ca^{2+} in the targeted neonatal cardiomyocytes. To elucidate whether or not this Ca^{2+} response could be common to an autoantibody- α_1 -AR loop 2-type interaction, we used a rabbit α_1 -AB. As shown in Figure 4B, this rabbit α_1 -AB also generated an acute positive Ca^{2+} response in the cardiomyocytes with a similar time course as did

the human antibody preparation. These responses were not elicited by a control IgG. As illustrated in Figure 4C, an IgG prepared from an α_1 -AAB negative patient was not able to raise the intracellular Ca^{2+} .

These results prompted myographic experiments in mesenteric arteries displayed in Figure 5. Treatment with KCl documented brisk viability of the preparation. PE and the rabbit α_1 -AB both

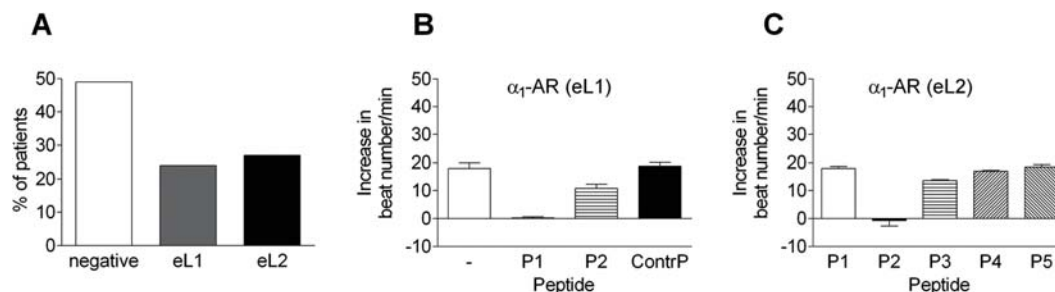


Figure 2. Epitope mapping for extracellular loop 1 and loop 2 of α_1 -AR is given. (A) α_1 -AAB were directed against the first extracellular loop (eL1) in 24% and against the second extracellular loop (eL2) in 27% of the hypertensive patients. (B) The peptide sequence P1 (YWAFGR) and P2 (GRVFCNI) (partially) for eL1 were able to diminish the spontaneous beating rate response completely. (C) Epitope mapping for loop 2 is given for the following amino acid sequences: P1: GWRQPA, P2: APEDET, P3: TICQIN, P4: INEEPG, P5: GYVLFS. The sequence P2 (APEDET) was able to diminish the spontaneous beating rate response completely. doi:10.1371/journal.pone.0003742.g002

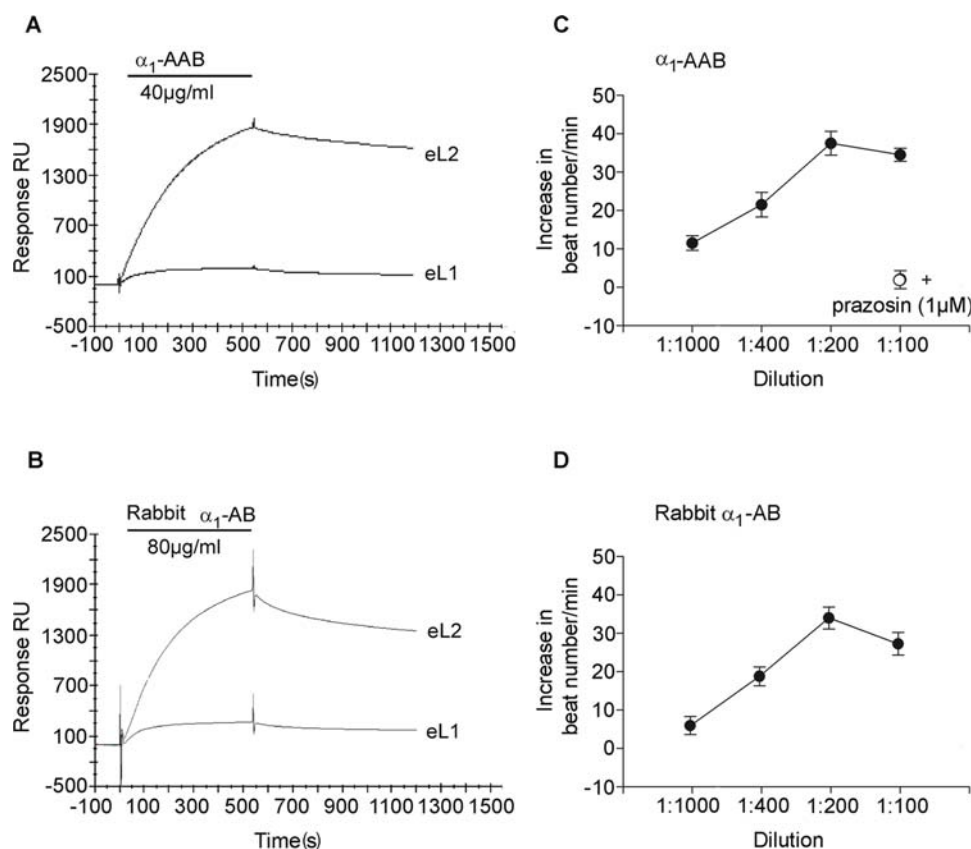


Figure 3. Binding and agonistic activity of patient α_1 -AAB and rabbit α_1 -AB. Surface plasmon resonance sensorgrams depicting antibody binding to α_1 -AR peptides (A and B). Biotinylated peptide corresponding to the α_{1A} -AR extracellular loop2 (eL2) were immobilized. A corresponding peptide to extracellular loop1 (eL1) served as negative control. α_1 -AAB from a patient with refractory hypertension (A) and rabbit α_1 -AB (B) bind exclusively to eL2. Note that the characteristics of the human antibody (A) and rabbit antibody (B) were the same. (C) Functional effects (cardiomyocyte contraction assay) of affinity-purified α_1 -AAB (0.1–1 μ g/ml medium) against second extracellular loop from a patient with refractory hypertension and (D) rabbit α_1 -AB (0.12–1.2 μ g/ml medium) against second extracellular loop. The functional findings corroborate the BIAcor results. doi:10.1371/journal.pone.0003742.g003

were able to constrict the vessel (Figure 5A). The effect of α_1 -AAB from two patients and from rabbit α_1 -AB was compared to half-maximal and maximal effective PE dosages, producing 50% and 100% of vessel constriction. Patient α_1 -AAB and rabbit α_1 -AB showed marked vasoconstriction activity. Control IgG from human and rabbits had no effect (Figure 5B).

We then examined signal transduction. We concentrated on PKC- α and ERK 1/2 as both have been shown to be important in

α_1 -AR-stimulated hypertension-induced target organ damage [6]. As shown in Figure 6, we found that α_1 -AAB and rabbit α_1 -AB exposure to cardiomyocytes or VSMC resulted in PKC- α activation, as did the positive PE control. These effects were blocked completely by the specific PKC- α blocker, Gö 6976. Additionally, the incubation of Chinese hamster ovary (CHO) cells stably transfected with human α_{1A} -AR (CHO/ α_{1A} -AR) with α_1 -AAB resulted in PKC- α activation, which was blocked by the peptide P2, corresponding to the binding site of the α_1 -AAB (Figure 7A).

We then studied ERK 1/2 phosphorylation and the upstream phosphatidylinositol 3 (PI3)-kinase activity in CHO/ α_{1A} -AR cells. Incubation with human α_1 -AAB resulted in ERK 1/2 phosphorylation. The PI3-kinase inhibitor, LY294002, inhibited the ERK 1/2 phosphorylation (Figure 7B). Additional hypertensive patients, who were either α_1 -AAB positive or negative in cardiomyocyte contraction assay, were characterized by ERK 1/2 activation with immunoblotting (Figure 8). α_1 -AAB from three patients induce a transient ERK 1/2 phosphorylation similar to that evoked by PE and rabbit α_1 -AB in neonatal cardiomyocytes. Phosphorylation was blocked by prazosin (Figure 8A). A similar activation was obtained in CHO/ α_{1A} -AR cells. The activation was specifically blocked by peptide P2 (Figure 8B). Fractions eluted from patients, who were negative in the cardiomyocyte contraction assay, failed to activate ERK 1/2.

Table 2. Differential expression of *PLA2-IIA* and *Cacna1c* in cardiomyocytes and VSMC after treatment with patient α_1 -AAB, rabbit α_1 -AB or PE (Fold changes in TaqMan analysis).

	α_1 -AAB	rabbit α_1 -AB	PE
<i>PLA2-IIA</i>			
Cardiomyocytes	2.3	6.2	4.0
VSMC	4.8	2.5	5.1
<i>Cacna1c</i>			
Cardiomyocytes	2.2	1.7	4.0
VSMC	2.0	1.8	2.2

doi:10.1371/journal.pone.0003742.t002

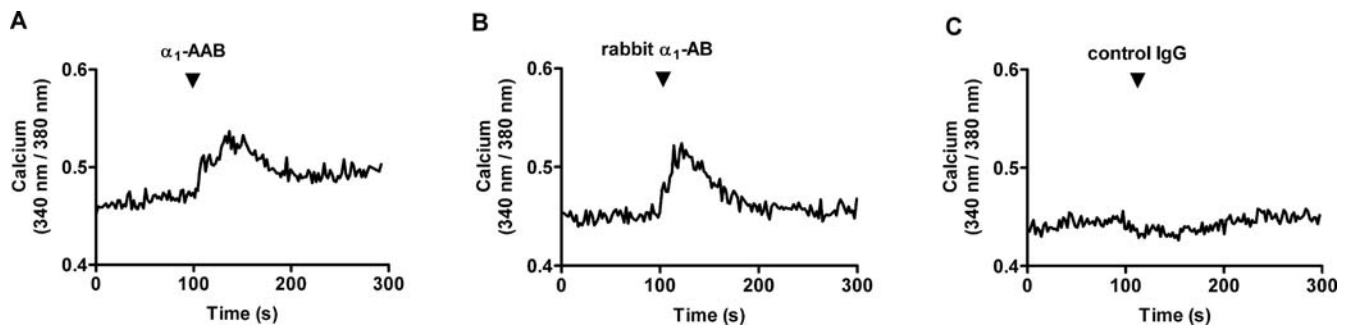


Figure 4. Representative traces of responses in intracellular Ca^{2+} of cultivated neonatal rat cardiomyocytes exposed to isolated patient α_1 -AAB and rabbit α_1 -AB are shown. (A) α_1 -AAB isolated from the serum of a patient with refractory hypertension elicited a Ca^{2+} signal. (B) The rabbit α_1 -AB gave a similar Ca^{2+} signal. (C) A human control IgG preparation was unable to affect intracellular Ca^{2+} . Cardiomyocytes were electrically stimulated at 1 Hz, and the peak Ca^{2+} was monitored. doi:10.1371/journal.pone.0003742.g004

Discussion

The important findings in this study are that isolated α_1 -AAB and generated α_1 -AB show similar binding characteristics by surface plasmon resonance sensorgram and functional testing. The antibodies induce a Ca^{2+} dependent signal transduction cascade in VSMC and cardiomyocytes that are both important to the pathophysiology of hypertension and cardiac remodeling. By gene array studies, we showed that the isolated patient α_1 -AAB and rabbit α_1 -AB both upregulate two gene types, namely *PLA2-IIA* and *Cacna1c*. In a proof-of-concept, non-controlled trial, we show that removal of α_1 -AAB by immunoadsorption lowers blood pressure in α_1 -AAB positive patients with intractable primary hypertension.

The entire idea of “agonistic” autoantibodies contributing to cardiovascular disease is controversial [17]. Antibodies directed at receptors can block or stimulate their targets. Hallmark example of the latter action is Graves’ disease where antibodies directed at the thyroid stimulating hormone receptor exert an agonistic action. Recently, compelling evidence has been presented regarding agonistic antibodies directed against the α_1 -AR, the β -ARs, the Ang II AT1-R, and the platelet-derived growth factor-alpha receptor, as reviewed elsewhere [17]. The antibodies could play a

pathogenic role in various cardiovascular diseases, including hypertension, cardiomyopathy, preeclampsia, acute humoral rejection, and connective tissue disease.

Earlier, we speculated that α_1 -AAB could contribute to hypertension [15]. Our goal here was to give the notion of α_1 -AAB a more robust scientific basis. Thus, we verified our candidate by generating α_1 -AB by immunization. Concomitantly, we subjected patients from our collective who harbored α_1 -AAB to immunoadsorption. We found in our uncontrolled trial that lowering α_1 -AAB titers was associated with a lower blood pressure. We did not perform a randomized double blind, crossover trial. Nonetheless, our study meets class I (safety) criteria and suggests that a future class II (efficacy) trial might be warranted. We cannot exclude the possibility that short-term effects of the immunoadsorption, such as circulating blood volume changes during apheresis or other confounders contributed to the reduction in blood pressure. Since the reduction in blood pressure persisted for the observation period of 180 days, we believe that removal of α_1 -AAB by apheresis was the main cause for the blood pressure reduction. Within the five days immunoadsorption period, the level of α_1 -AAB decreased gradually. Thereafter, α_1 -AAB could not be detected after successful immunoadsorption in these patients for the entire observation period

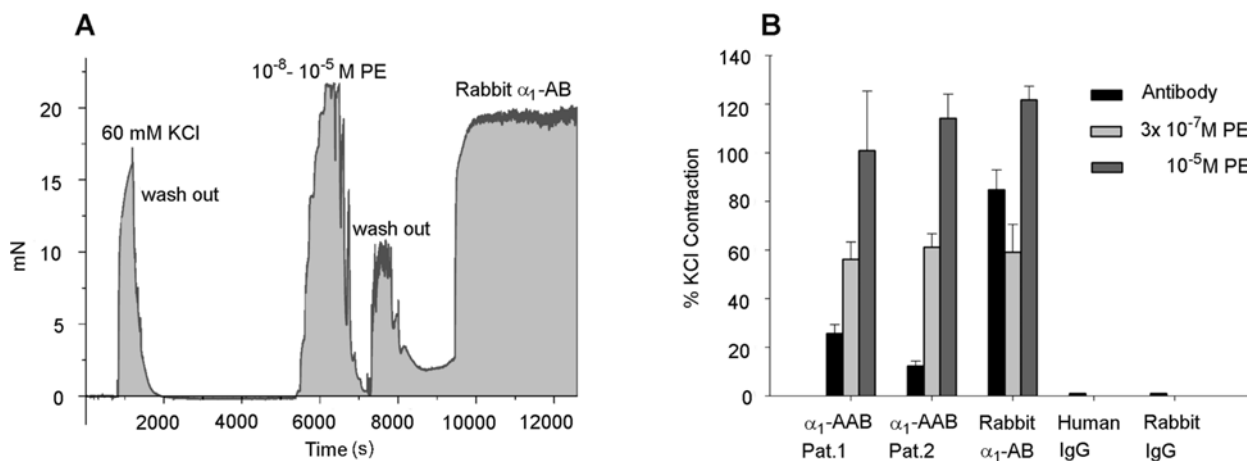


Figure 5. Contractile effect of patient α_1 -AAB and rabbit α_1 -AB in mesenteric arteries is given. A brisk KCl response is documented. (A) Representative experiment showing the contractile response to phenylephrine (PE, 10 nM–10 μ M) and rabbit α_1 -AB (50 μ g in 5 ml PBS buffer). The PE and antibody responses were similar in kind. (B) Contractile response of human α_1 -AAB isolated from two patients (5 μ g in 5 ml PBS buffer) and rabbit α_1 -AB (50 μ g in 5 ml PBS buffer) are compared to the PE response (300 nM and 10 μ M, respectively) is shown. Contractions are expressed as % KCl response from patient 1 and patient 2. The human antibody responses were less than the low and high-dose PE responses. The rabbit α_1 -AB responses approached the PE responses. Two columns on the right are control human and control rabbit IgG showing no response. doi:10.1371/journal.pone.0003742.g005

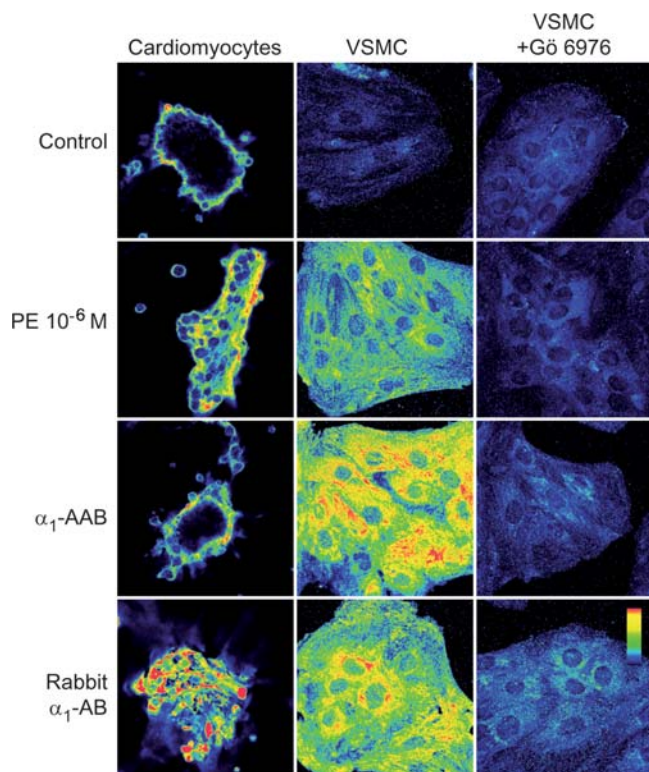


Figure 6. Protein kinase C alpha (PKC- α) activation in cardiomyocytes and vascular smooth muscle cells (VSMC) after 2 min incubation with PE, α_1 -AAB from patients, and rabbit α_1 -AB is demonstrated. Horizontal rows show regimens, namely, untreated control, PE, patient α_1 -AAB, and rabbit α_1 -AB. Vertical columns show cardiomyocyte and VSMC responses. Yellow shows PKC- α activation; red is more intense activation. Gō 6976 is a PKC- α inhibitor, which blocked all responses.
doi:10.1371/journal.pone.0003742.g006

of 180 days. A similar state-of-affairs has been described for β_1 -AAB in dilated cardiomyopathy after immunoadsorption. These data suggest that immunomodulation by removal or neutralization of the AAB might represent a potential therapeutic strategy [18].

We isolated the detected α_1 -AAB and the α_1 -AB that we generated against the same epitope in rabbits, using the same affinity purification protocol. Since we used the same peptide sequence for epitope mapping in the cardiomyocyte contraction assay, immunization in the rabbit, and isolation in the affinity column, we are confident that we isolated solely α_1 -AB. Before using this material to learn more about α_1 -AR signaling in VSMC and cardiomyocytes, we confirmed binding specificity by functional (cardiac contraction assay and ERK 1/2 phosphorylation) and biochemical (surface plasmon resonance measurement) verification methods. We then performed an Affymetrix gene expression study. We followed up on the results to pursue two candidate genes, *PLA2-IIA* and *Cacna1c* that were upregulated in the display, as verified by RT-PCR. Both genes contribute to signaling pathways in hypertension and atherosclerosis. Phospholipases A2 are acute-phase reactants and play an important role in digestion and metabolism of phospholipids, as well as in production of precursors for inflammatory reactions. Plasma PLA2-IIA levels are increased in systemic inflammation, including, rheumatoid arthritis and cardiovascular diseases [19,20,21]. In infarcted hearts, expression of PLA2-IIA was markedly increased in damaged cardiomyocytes [22]. Inhibition of PLA2-IIA also prevented cardiac fibrosis in spontaneously hypertensive rats [23].

Another important finding accrued is the fact that both the α_1 -AAB from patients and the rabbit α_1 -AB affected intracellular Ca^{2+} at two different levels, namely the acute, short-term elevation of intracellular Ca^{2+} , and the increased transcript expression of the voltage-gated L-type Ca^{2+} channel pore subunit. Acute administration of the purified antibodies to neonatal cardiomyocytes produced a typically shaped Ca^{2+} transient. The onset of the cytosolic Ca^{2+} response occurred within few seconds reaching its maximum at less than one minute. α_1 -AR stimulation potentiates L-type Ca^{2+} current through CaMK II activation in rat ventricular myocytes [24].

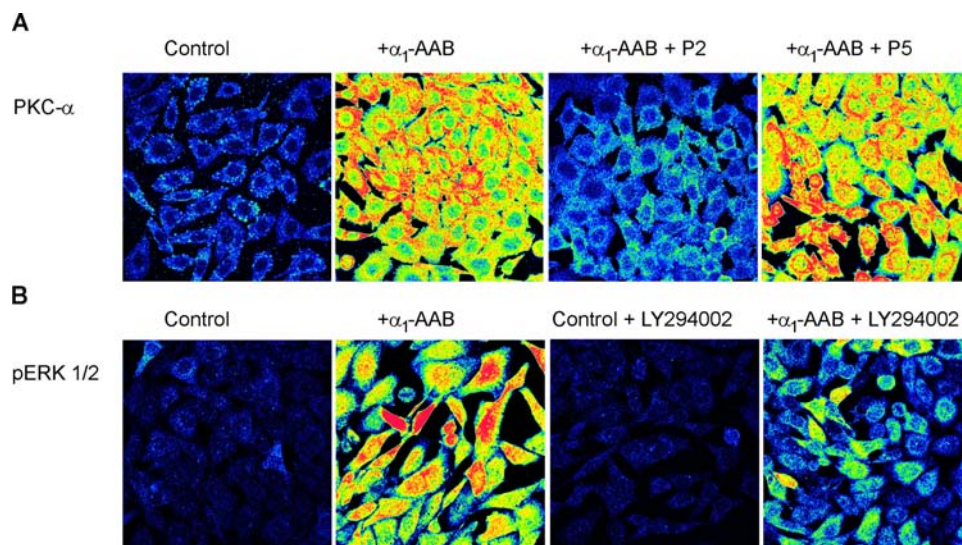


Figure 7. PKC- α and ERK 1/2 activation in CHO cells stably transfected with human α_{1A} -AR (CHO/ α_{1A} -AR) by α_1 -AAB is demonstrated. (A) Incubation of CHO/ α_{1A} -AR cells with α_1 -AAB for 2 min resulted in a PKC- α activation, which was blocked by the peptide P2, but not by the peptide P5. (B) ERK 1/2 phosphorylation after incubation with α_1 -AAB for 5 min is shown. Inhibition of the upstream phosphatidylinositol 3 (PI3)-kinase activity by the inhibitor LY294002 strongly reduced ERK 1/2 phosphorylation. Yellow shows PKC- α and ERK 1/2 activation, respectively; red is more intense activation.
doi:10.1371/journal.pone.0003742.g007

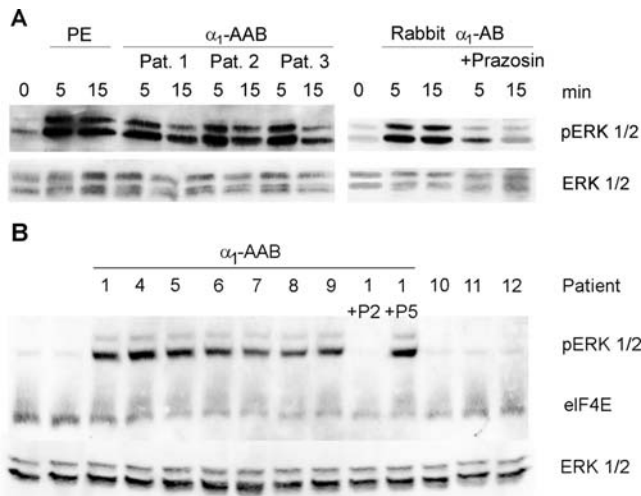


Figure 8. Activation of ERK 1/2 in response to treatment with PE, α_1 -AAB from patients or rabbit α_1 -AB is shown. (A) Cardiomyocytes were treated for 5 and 15 min with 10 μ M PE, 2.5 μ g/ml α_1 -AAB or rabbit α_1 -AB, respectively. Equivalent amounts of protein were analyzed by Western blotting with anti-pERK 1/2 antibody (44/42 kD) and the amount of ERK was analyzed with anti-ERK 1/2 antibody. PE, patient α_1 -AAB, and rabbit α_1 -AB caused ERK 1/2 phosphorylation. (B) CHO/ α_1 A-AR cells were incubated with patient α_1 -AAB for 5 min. Lane 1 and 2 represent untreated cells. Patients 1, 4–8 were α_1 -AAB-positive in the cardiomyocyte contraction assay. “Patient” 9 represents a pool of five α_1 -AAB positive patients. Patients 10–12 were α_1 -AAB negative in the cardiomyocyte contraction assay. Their serum samples were processed identically to those of α_1 -AAB-positive patients. ERK 1/2 phosphorylation was inhibited by peptide P2, but not by peptide P5. Eukaryotic initiation factor 4E (eIF4E, 25 kD) antibody was used as translational control, the amount of ERK was analyzed with anti-ERK 1/2 antibody.

doi:10.1371/journal.pone.0003742.g008

Furthermore, rabbit antibody to the α_1 AR and autoantibodies against the AT1-receptor could activate the Ca^{2+} current [25,26]. The peak response of cytosolic Ca^{2+} to the antibodies apparently comprises a temporary imbalance of Ca^{2+} entry through L-type Ca^{2+} channel and the sarcoplasmic reticulum Ca^{2+} release on one hand and Ca^{2+} sequestration into the sarcoplasmic reticulum and Ca^{2+} extrusion via the Na^+/Ca^{2+} exchanger on the other hand.

In addition to acute Ca^{2+} current stimulation, we found that long-term activation of the α_1 -AR pathway by patient α_1 -AAB and rabbit α_1 -AB increases transcript levels of the voltage-dependent L-type Ca^{2+} channel α_1C subunit (*Ca_v1c*) in neonatal cardiomyocytes and VSMC. Voltage-dependent L-type Ca^{2+} channels (L-VDCC) play a crucial role in the regulation of heart rhythm and contractile performance, as well as in smooth muscle tone. The channels open in response to membrane depolarization providing Ca^{2+} ingress into the cell. In the myocardium, this local rise in Ca^{2+} concentration triggers massive Ca^{2+} release from the sarcoplasmic reticulum stores inducing in turn contraction. L-VDCC expressed in cardiac and smooth muscle are multi-subunit proteins containing the α_1C , α_2/δ , and β subunits. The α_1C subunit forms the ion-selective pore, determines voltage sensitivity, and is a binding site for clinically used Ca^{2+} channel blockers [27]. Thus, upregulation of α_1C subunit expression in response to α_1 -AR stimulation observed herein provides the route for an enhanced Ca^{2+} ingress which may contribute to Ca^{2+} imbalances and translate in cardiac dysfunction. Our results are consistent with those of Pignier *et al.* who reported on increased expression of functional L-type Ca^{2+} channels and hypertrophy in neonatal cardiomyocytes upon chronic α_1 -AR stimulation [28]. In contrast, Maki *et al.* described that in neonatal

rat cardiomyocytes activation of the α_1 -AR pathway was accompanied by attenuated α_1C mRNA levels [29]. A link between increased α_1C protein levels and hypertrophy has also been demonstrated for the human heart [30].

A transgenic mouse with cardiac specific over-expression of solely the Ca^{2+} channel pore subunit has been studied intensively [31]. When α_1C protein levels were increased by about 3-fold, a slightly increased Ca^{2+} inward current (30–40%) was observed, and the mice developed hypertrophy and severe cardiomyopathy as a function of age. The small sustained ingress of Ca^{2+} through the channel is capable of elevating PKC- α before the development of hypertrophy. [32] Activation of PKC in adult cardiomyocytes regulates ERK 1/2 through the c-RAF/MEK/ERK signaling pathway and α_1 -AR-stimulated hypertrophy in cardiomyocytes is mediated via activation of the Ras-Raf-MEK1/2-ERK 1/2 signaling pathway [6,33]. As a consequence, we investigated the regulation of PKC- α and ERK 1/2 activity by human α_1 -AAB, rabbit α_1 -AB, or PE. We demonstrated that α_1 -AAB and α_1 -AB induced PKC- α stimulation and ERK 1/2 phosphorylation. Finally, we showed that human α_1 -AAB and the rabbit α_1 -AB evoke vasoconstriction in a vascular bed.

Taken together, we present data from a limited, uncontrolled, human trail of α_1 -AAB removal from severely hypertensive human subjects. This trial presents a hypothesis-generating result. We show that isolated α_1 -AAB from man and rabbits cause gene upregulation important to hypertension-relevant pathways and then document the induction of Ca^{2+} -dependent pathways. We provide evidence that α_1 -AAB are of potential pathophysiological relevance and could represent a factor contributing to the development of refractory hypertension. Removal or neutralization of α_1 -AAB might represent a possible therapeutic option. Accordingly, we suggest that the entire gamut of autoimmunity in chronic cardiovascular disease warrants further critical inspection.

Materials and Methods

Patients

Patients requiring three or more medication classes to achieve goal control blood pressure values were recruited from the Franz-Volhard Clinic outpatient department. All had been studied intensively and secondary causes of hypertension had been ruled out. Home and clinic blood pressures in these patients were determined with an automated oscillometric device under standardized conditions. The internal review board approved the study and written informed consent was obtained from all participants. Five patients harboring α_1 -AAB were asked to undergo five immunoabsorption treatments with an especially prepared column according to procedures described elsewhere [34].

α_1 -AAB detection

We isolated immunoglobulin fractions from serum samples as described earlier [4,15]. For detection of autoantibodies, the immunoglobulin fractions were added to neonatal rat cardiomyocytes at a dilution of 1:20. For the neutralization experiments, synthetic peptides corresponding to the sequence of the first extracellular loop (YWAFGRVFCNIWA), and the second extracellular loop (PAPEDETICQINEE) of the human α_1A -AR were each added in excess (0.05 to 0.1 μ g) to the immunoglobulin fraction. The mixtures were shaken and placed in a refrigerator for 1 h. The 100 μ l samples were then added to neonatal rat heart muscle cells cultured in 2 ml of medium to a final dilution of 1:40. The beating rate was counted for 15 sec, 5 and 60 min after the addition of the peptide/immunoglobulin mixture. We tested α_1 -AAB activity in a neonatal cardiomyocyte assay without and with

peptide inhibition. Pulsation rate was exhibited 1 h or 24 h, respectively after incubation with α_1 -AAB and compared with the spontaneous basal pulsation rate. Eight synchronously contracting cell clusters per flask were counted for 15 sec on a heat table stage.

α_1 -AB generation in rabbit and antibody purification

We immunized rabbits against a peptide corresponding to the amino acid sequence of the second extracellular loop of the isoform A of human α_1 -AR (PAPEDETICQINEE) by BioGenes GmbH (Berlin, Germany). The corresponding peptide of the second extracellular loop of the α_1 -AR was covalently bound to ϵ -aminocapryl agarose (Sigma-Aldrich, Munich, Germany) to yield epitope-specific affinity beads. For coupling the agarose gel matrix (~1 ml of packed gel) was activated by glutaraldehyde (1% solution, freshly prepared) for 20 min at room temperature on a rotating wheel. The activated gel was extensively washed with PBS and allowed to react with the peptide solution for 3 h at room temperature or overnight at 4°C on a rotating wheel. The coupling reaction was terminated by incubation with 200 mM Tris/Glycine buffer pH 7.2. The affinity beads were poured into a column (Bio-Rad, Munich, Germany) and stored with 0.02% sodium acid in buffer A consisting of 50 mM Tris/HCl, 0.5 M NaCl, pH 7.4, at 4°C.

The affinity beads were washed with buffer A to remove the sodium acid. Serum samples (5–15 ml) from patients with refractory hypertension or from immunized rabbits were incubated with the affinity beads overnight at 4°C on a rotating wheel. The beads were allowed to settle and the sera were removed and stored for a second round of affinity purification at a given matrix. The beads were washed with buffer A until baseline levels of protein are detected at 280 nm. The antibodies were eluted at room temperature in 1 ml fractions with 50 mM Tris/Glycine, 0.5 M NaCl, pH 2.5. Antibody fractions were immediately neutralized with 0.5 ml of 0.5 M Tris/HCl, 0.5 M NaCl, pH 7.4. The antibody concentration was calculated by measurement the absorption at 280 nm.

Surface plasmon resonance measurements

Binding experiments were performed in a BIAcore 2000 Instrument (Uppsala Sweden) at 25°C. N-terminally biotinylated peptides corresponding to the first and second extracellular loop of the α_{1A} -AR were immobilized at binding levels of 100 relative units (RU) each on parallel lanes of a SA-biosensor chip. Affinity-purified antibodies from patient blood samples were injected in the flow cells at a rate of 20 μ l/min in HBSE running buffer consisting of 10 mM HEPES, pH 7.4, 150 mM NaCl, and 3 mM EDTA. The binding was regenerated between binding measurements using 5 mM Tris/Glycine, 50 mM NaCl, pH 2.5, with no decrease in extent measurements over the duration of an experiment. Data were analyzed using the BIAevaluation 3.2 RC 1 program. The analysis software corrects for baseline drift during measurements. The curves were fitted to a single-site interaction model. Kd values were calculated by using the formula $Kd = k_{off} / k_{on}$ in which k_{off} and k_{on} is the rate constant of dissociation and association kinetics, respectively.

Cell culture and autoantibody incubation

Rat neonatal cardiomyocytes were prepared from ventricles of 1–2 day-old Wistar rats using a modified method [35]. The cells were cultured as monolayers for 4 days at 37°C in SM 20-1 medium supplemented with 10% heat-inactivated calf serum, 2 μ M fluorodeoxyuridine and penicillin/streptomycin. Aortic VSMC were isolated from Sprague Dawley rats as described previously [36]. CHO cells were stably transfected with human α_{1A} -AR (CHO/ α_{1A} -

AR) using a pSW104 vector and were cultured in F12 HAM medium supplemented with glutamine, 10% FCS and 1% penicillin/streptomycin as described earlier [37]. For gene expression analysis cardiomyocytes and VSMC, respectively were incubated with human control IgG endobulin (5 μ g/ml medium, Baxter, Wien, Austria), α_1 -AAB from different patients (2.5 μ g/ml medium), rabbit α_1 -AAB (2.5 μ g/ml medium), and with the α_1 -AR agonist PE (10 μ M, Sigma-Aldrich) for 24 h in DMEM medium containing 1% serum. Experiments were repeated with three different cardiomyocytes and VSMC preparations. For investigation of protein phosphorylation, cardiomyocytes and CHO/ α_{1A} -AR cells were maintained in serum-free media for 24 h or 4 h, respectively and treated with PE, human α_1 -AAB or rabbit α_1 -AB for 5 and 15 min, respectively. For inhibition experiments, prazosin (1 μ M, Sigma-Aldrich) was added. Five μ g of the peptides P2 (APEDET) or P5 (GYVLFS) were given to 2.5 μ g of α_1 -AAB 1 h before cell treatment. For the inhibition of ERK 1/2 activation, CHO/ α_{1A} -AR cells were pre-incubated with PI3-kinase inhibitor LY294002 for 10 min.

Gene expression analysis

We extracted total RNA from cardiomyocytes treated with human control IgG, α_1 -AAB, rabbit α_1 -AB or PE using the RNeasy Purification Kit (Qiagen GmbH, Hilden, Germany). RNA was treated by deoxyribonuclease I (Qiagen). Two μ g RNA of cells were transcribed in cRNA with One-Cycle Target labeling and Control Reagents (Affymetrix, Santa Clara, CA, USA). Non-pooled microarray experiments were performed with cRNA prepared from independent cardiomyocyte cell preparations using Rat Genome 230 2.0 Arrays (31,099 probe sets, Affymetrix). After passing the quality control for each experiment a set of RMA normalized expression values have been produced. The log scale robust multi-array analysis (RMA) estimates are based upon a robust average of log₂ (B (PM)), where B (PM) are background corrected perfect match intensities [38]. For statistical comparison of expression data student's t-test was used.

Quantitative Real-Time Reverse Transcriptase PCR (TaqMan)

cDNA was synthesized from 2 μ g of total RNA isolated from cardiomyocytes and VSMC, respectively using PowerScript Reverse Transcriptase (BD Bioscience Clontech, Palo Alto, USA) and an Oligo (dT)₁₈ primer. Real-time PCR experiments were done using the Mx3000P[®] real-time PCR system (Stratagene Europe, Amsterdam, NL) and the Brilliant QPCR master mix (Stratagene Europe). Real-time PCR was performed with non-pooled samples from cardiomyocytes and VSMC respectively. Beta-2-microglobulin (*B2M*) and glyceraldehyde-3-phosphate dehydrogenase (*GAPDH*) were used as endogenous references to normalize expression of a target gene. For every sample three independent runs in triplicates and the relative changes in gene expression were quantified by comparative Ct method [39]. Primer sequences are listed in Table 3.

Immunocytochemistry

We described the techniques for confocal microscopy and immunocytochemistry as referenced previously [4,40]. The cells were fixed with 4% paraformaldehyde and permeabilized with 80% methanol at -20°C. After incubation with 2% BSA in PBS for 60 minutes, the preparation was incubated for 1 hour at room temperature with the monoclonal anti-PKC- α antibody from UBI (clone M4) diluted in PBS with 1% BSA (1:80) or pERK 1/2 antibody (1:200, Cell Signaling Technology, Boston, MA, USA), respectively, washed twice with PBS, and then exposed to the secondary antibody (Alexa-488-conjugated anti-mouse IgG at 1:200,

Table 3. Primer and probe sequences used for TaqMan RT-PCR.

Gene		Sequences (5'→3')	Accession
B2M	for	GCT CGG TGA CCG TGA TCT TT	NM_012512
	rev	GAG TTT TCT GAA TGG CAA GCA	
	probe	FAM-TGG TGC TTG TCT CTC TGG CCG TC-TAMRA	
GAPDH	for	CAA CGG CAC AGT CAA G	NM_017008
	rev	TCG CTC CTG GAA GAT G	
	probe	FAM-TGA GAA TGG GAA GCT GGT CAT CA-TAMRA	
PLA2-IIA	for	GGA CTC CTG CCG GAA ACA G	NM_031598
	rev	TTC CGG GCA AAA CAT TCA G	
	probe	FAM-TGT GCC AGT GCG ATA AAG CTG CC-TAMRA	
Cacna1c	for	TCA CTG CTG TCG GGA TAA GC	NM_012517
	rev	GGC CTT CTC CCC TGA AAA G	
	probe	FAM-AGC TGG GCG GTG TAC GAA GTC G-TAMRA	

Used annealing temperature was 58°C.
doi:10.1371/journal.pone.0003742.t003

1% BSA/PBS; Invitrogen, Life Technologies, Carlsbad, CA, USA) for 60 minutes. The preparation was mounted with AquaPolymount (Polyscience, Niles, IL, USA) under a glass coverslip on a Nikon-Diaphot microscope. An MRC 1024 confocal imaging system (Bio-Rad) with an argon/krypton laser was used. At least 25 to 40 cells from each of at least three experiments were examined under each experimental condition.

Western blotting

Cardiomyocytes and CHO/α_{1A}-AR cells were scraped in lysis buffer [20 mM HEPES (pH7.9), 350 mM NaCl, 20% glycerol, 1 mM MgCl₂, 0.5 mM EDTA, 0.1 mM EGTA, 1% NP40, complete protease inhibitor cocktail (Roche Diagnostic GmbH, Mannheim, Germany) and phosphatase inhibitor cocktail (Sigma-Aldrich)] and centrifuged at 10,000 rpm for 10 min. Protein concentrations were measured with Bradford method and equal amounts of proteins were analyzed by Western blotting. ERK phosphorylation was detected by pERK 1/2 antibody (1:1000, Cell Signaling Technology). As translational control an ERK antibody (1:1000, Cell Signaling Technology) and eukaryotic initiation factor 4E (eIF4E) antibody (1:7000, Cell Signaling Technology) were used. HRP-conjugated goat anti-rabbit secondary antibody (1:5000, Jackson Immunoresearch Europe, Suffolk, UK) was used. Detection was performed with the ECLTM-substrate (Lumigen, Southfield, MI, USA) according to the manufacturers instructions.

Measurement of cytosolic Ca²⁺ transients

Neonatal cardiomyocytes were plated onto Labtek four chamber slides (Nunc GmbH & Co, Wiesbaden, Germany) suited for

fluorescence measurements at a density of 0.2×10⁶ cells per chamber. After cultivation for four days the medium was removed and cells were washed twice with 10 mM Hepes-buffered Hank's salt solution, pH 7.4 (HBSS). Cardiomyocytes were incubated on HBSS for 60 minutes at 37°C. Then the solution was replaced by 0.5 ml HBSS containing 2.5 μM final concentration of Fura 2-AM (Calbiochem AG, Luzern, Switzerland) and left for loading in the dark at room temperature. After 30 min the loading solution was aspirated, the cells washed and kept on 0.5 ml HBSS in the dark and at room for another 30 minutes before use. Measurements of cytosolic Ca²⁺ transients were performed on an IonOptix Fluorescence and Contractility System (Milton, MA, USA) equipped with a Leica microscope with a heatable stage. All measurements were carried out at 37°C. Cardiomyocytes were electrically stimulated at 1 Hz and the ratio of 340 nm/380 nm was recorded. After stabilization of the Fura signal the control trace was taken. Antibody preparations were applied in a constant volume of 100 μl of pre-warmed HBSS to give a final concentration of 2 μg/ml. For evaluation of Ca²⁺ changes peak values were derived from the trace recordings representing the maximum cytosolic Ca²⁺ achieved in the contracted cell.

Contraction of mesenteric arteries

Vessel rings from superior mesenteric arteries of male Sprague-Dawley rats (200 to 300 g, 6 to 8 weeks) were prepared and intracellular membrane potential was measured as earlier described [41]. In the first series of experiments, the rings were exposed to increasing doses of PE (10 nM–10 μM) and with acetylcholine (10 nM–10 μM) for relaxation. Following, vessel rings were incubated with α₁-AAB (5 μg in 5 ml PBS buffer), rabbit α₁-AB (50 μg in 5 ml PBS buffer), rabbit IgG (50 μg in 5 ml PBS buffer, Dunn Labortechnik GmbH, Asbach, Germany) and human control IgG endobulin (50 μg in 5 ml PBS buffer).

Statistics

We relied on student's t-tests (adjusted as necessary) for normally distributed data and performed analysis of variance (repeated measures were indicated). P<0.05 was accepted as significant. Data are expressed as mean±SD.

Acknowledgments

We thank Karin Karczewski and Petra Hempel for the cultivation of cardiomyocytes and Steffen Luther for the surface plasmon resonance measurements. We are indebted to Prof. Martin Michel, Dept. Pharmacology & Pharmacotherapy the University of Amsterdam, Netherlands for providing CHO cells stably transfected with human α_{1A}-AR.

Author Contributions

Conceived and designed the experiments: KW HH GW DNM FCL RD RD PK. Performed the experiments: KW HH GW WD SB VH FH NH HS MJ CL CS SV RD PK. Analyzed the data: KW HH WD SB VH FH NH HS SV IM DNM FCL RD RD PK. Contributed reagents/materials/analysis tools: KW HH GW WD SB IM PK. Wrote the paper: KW HH FCL RD PK.

References

- Antonelli A, Baj G, Marchetti P, Fallahi P, Surico N, et al. (2001) Human anti-CD38 autoantibodies raise intracellular calcium and stimulate insulin release in human pancreatic islets. *Diabetes* 50: 985–991.
- Rapoport B, McLachlan SM (2007) The thyrotropin receptor in Graves' disease. *Thyroid* 17: 911–922.
- Dragun D, Muller DN, Brasen JH, Fritsche L, Nieminen-Kelha M, et al. (2005) Angiotensin II type 1-receptor activating antibodies in renal-allograft rejection. *N Engl J Med* 352: 558–569.
- Wallukat G, Homuth V, Fischer T, Lindschau C, Horstkamp B, et al. (1999) Patients with preeclampsia develop agonistic autoantibodies against the angiotensin AT1 receptor. *J Clin Invest* 103: 945–952.
- Jahns R, Boivin V, Hein L, Triebel S, Angermann CE, et al. (2004) Direct evidence for a beta 1-adrenergic receptor-directed autoimmune attack as a cause of idiopathic dilated cardiomyopathy. *J Clin Invest* 113: 1419–1429.
- Piascik MT, Perez DM (2001) Alpha 1-adrenergic receptors: new insights and directions. *J Pharmacol Exp Ther* 298: 403–410.

7. Michelotti GA, Price DT, Schwinn DA (2000) Alpha 1-adrenergic receptor regulation: basic science and clinical implications. *Pharmacol Ther* 88: 281–309.
8. Barzilay JL, Davis BR, Bettencourt J, Margolis KL, Goff DC Jr, et al. (2004) Cardiovascular outcomes using doxazosin vs. chlorthalidone for the treatment of hypertension in older adults with and without glucose disorders: a report from the ALLHAT study. *J Clin Hypertens (Greenwich)* 6: 116–125.
9. Shannon R, Chaudhry M (2006) Effect of alpha1-adrenergic receptors in cardiac pathophysiology. *Am Heart J* 152: 842–850.
10. Huang Y, Wright CD, Merkwang CL, Baye NL, Liang Q, et al. (2007) An alpha1A-adrenergic-extracellular signal-regulated kinase survival signaling pathway in cardiac myocytes. *Circulation* 115: 763–772.
11. O'Connell TD, Ishizaka S, Nakamura A, Swigart PM, Rodrigo MC, et al. (2003) The alpha(1A/C)- and alpha(1B)-adrenergic receptors are required for physiological cardiac hypertrophy in the double-knockout mouse. *J Clin Invest* 111: 1783–1791.
12. O'Connell TD, Swigart PM, Rodrigo MC, Ishizaka S, Joho S, et al. (2006) Alpha1-adrenergic receptors prevent a maladaptive cardiac response to pressure overload. *J Clin Invest* 116: 1005–1015.
13. Fu ML, Herlitz H, Wallukat G, Hilme E, Hedner T, et al. (1994) Functional autoimmune epitope on alpha 1-adrenergic receptors in patients with malignant hypertension. *Lancet* 344: 1660–1663.
14. Liao YH, Wei YM, Wang M, Wang ZH, Yuan HT, et al. (2002) Autoantibodies against AT1-receptor and alpha1-adrenergic receptor in patients with hypertension. *Hypertens Res* 25: 641–646.
15. Luther HP, Homuth V, Wallukat G (1997) Alpha 1-adrenergic receptor antibodies in patients with primary hypertension. *Hypertension* 29: 678–682.
16. Zhou Z, Liao YH, Wei Y, Wei F, Wang B, et al. (2005) Cardiac remodeling after long-term stimulation by antibodies against the alpha1-adrenergic receptor in rats. *Clin Immunol* 114: 164–173.
17. Luft FC, Dechend R, Dragun D, Müller DN, Wallukat G (2008) Agonistic antibodies directed at cell-receptors and cardiovascular disease. *J Am Soc Hypertension* 1: 571–579.
18. Boivin V, Palm D, Frost RJ, Hein L, Angermann CE, et al. (2007) Neutralizing cyclo-peptides added on beta-blocker therapy in beta1-receptor antibody-induced heart failure: reversal of cardiomyopathic phenotype and molecular markers of sympathetic activation. *Eur Heart J* 27, suppl.1, 24(104).
19. Kugiyama K, Ota Y, Kawano H, Soejima H, Ogawa H, et al. (2000) Increase in plasma levels of secretory type II phospholipase A(2) in patients with coronary spastic angina. *Cardiovasc Res* 47: 159–165.
20. Nevalainen TJ, Haapamaki MM, Gronroos JM (2000) Roles of secretory phospholipases A(2) in inflammatory diseases and trauma. *Biochim Biophys Acta* 1488: 83–90.
21. Porela P, Pulkki K, Voipio-Pulkki LM, Pettersson K, Leppanen V, et al. (2000) Level of circulating phospholipase A2 in prediction of the prognosis of patients with suspected myocardial infarction. *Basic Res Cardiol* 95: 413–417.
22. Masuda S, Murakami M, Ishikawa Y, Ishii T, Kudo I (2005) Diverse cellular localizations of secretory phospholipase A2 enzymes in several human tissues. *Biochim Biophys Acta* 1736: 200–210.
23. Levick S, Loch D, Rolfe B, Reid RC, Fairlie DP, et al. (2006) Antifibrotic activity of an inhibitor of group IIA secretory phospholipase A2 in young spontaneously hypertensive rats. *J Immunol* 176: 7000–7007.
24. O-Uchi J, Komukai K, Kusakari Y, Obata T, Hongo K, et al. (2005) alpha1-adrenoceptor stimulation potentiates L-type Ca2+ current through Ca2+/calmodulin-dependent PK II (CaMKII) activation in rat ventricular myocytes. *Proc Natl Acad Sci U S A* 102: 9400–9405.
25. Bkaily G, El-Bizri N, Bui M, Sukarieh R, Jacques D, et al. (2003) Modulation of intracellular Ca2+ via L-type calcium channels in heart cells by the autoantibody directed against the second extracellular loop of the alpha1-adrenoceptors. *Can J Physiol Pharmacol* 81: 234–246.
26. Thway TM, Shlykov SG, Day MC, Sanborn BM, Gilstrap LC 3rd, et al. (2004) Antibodies from preeclamptic patients stimulate increased intracellular Ca2+ mobilization through angiotensin receptor activation. *Circulation* 110: 1612–1619.
27. Bodi I, Mikala G, Koch SE, Akhter SA, Schwartz A (2005) The L-type calcium channel in the heart: the beat goes on. *J Clin Invest* 115: 3306–3317.
28. Pignier C, Levan-Petit I, Ancey C, Potreau D (2000) Alpha-adrenoceptor stimulation induces hypertrophy and increases L-type calcium current density in neonatal rat ventricular cardiomyocytes in culture. *Receptors Channels* 7: 173–187.
29. Maki T, Gruver EJ, Davidoff AJ, Izzo N, Toupin D, et al. (1996) Regulation of calcium channel expression in neonatal myocytes by catecholamines. *J Clin Invest* 97: 656–663.
30. Haase H, Kresse A, Hohaus A, Schulte HD, Maier M, et al. (1996) Expression of calcium channel subunits in the normal and diseased human myocardium. *J Mol Med* 74: 99–104.
31. Muth JN, Yamaguchi H, Mikala G, Grupp IL, Lewis W, et al. (1999) Cardiac-specific overexpression of the alpha(1) subunit of the L-type voltage-dependent Ca(2+) channel in transgenic mice. Loss of isoproterenol-induced contraction. *J Biol Chem* 274: 21503–21506.
32. Muth JN, Bodi I, Lewis W, Varadi G, Schwartz A (2001) A Ca(2+)-dependent transgenic model of cardiac hypertrophy: A role for protein kinase Calpha. *Circulation* 103: 140–147.
33. Iijima Y, Laser M, Shiraiishi H, Willey CD, Sundaravadeivel B, et al. (2002) c-Raf/MEK/ERK pathway controls protein kinase C-mediated p70S6K activation in adult cardiac muscle cells. *J Biol Chem* 277: 23065–23075.
34. Wallukat G, Muller J, Hetzer R (2002) Specific removal of beta1-adrenergic autoantibodies from patients with idiopathic dilated cardiomyopathy. *N Engl J Med* 347: 1806.
35. Wallukat G, Wollenberger A, Morwinski R, Pitschner HF (1995) Anti-beta 1-adrenoceptor autoantibodies with chronotropic activity from the serum of patients with dilated cardiomyopathy: mapping of epitopes in the first and second extracellular loops. *J Mol Cell Cardiol* 27: 397–406.
36. Shagdarsuren E, Wellner M, Braesen JH, Park JK, Fiebeler A, et al. (2005) Complement activation in angiotensin II-induced organ damage. *Circ Res* 97: 716–724.
37. Keffel S, Alexandrov A, Goepel M, Michel MC (2000) alpha(1)-adrenoceptor subtypes differentially couple to growth promotion and inhibition in Chinese hamster ovary cells. *Biochem Biophys Res Commun* 272: 906–911.
38. Irizarry RA, Bolstad BM, Collin F, Cope LM, Hobbs B, et al. (2003) Summaries of Affymetrix GeneChip probe level data. *Nucleic Acids Res* 31: e15.
39. Livak KJ, Schmittgen TD (2001) Analysis of relative gene expression data using real-time quantitative PCR and the 2(-Delta Delta C(T)) Method. *Methods* 25: 402–408.
40. Dechend R, Viedt C, Muller DN, Ugele B, Brandes RP, et al. (2003) AT1 receptor agonistic antibodies from preeclamptic patients stimulate NADPH oxidase. *Circulation* 107: 1632–1639.
41. Verlohren S, Niehoff M, Hering L, Geusens N, Herse F, et al. (2008) Uterine vascular function in a transgenic preeclampsia rat model. *Hypertension* 51: 547–553.