

# Requirement of plakophilin 2 for heart morphogenesis and cardiac junction formation

Katja S. Grossmann,<sup>1</sup> Christine Grund,<sup>2</sup> Joerg Huelsken,<sup>1</sup> Martin Behrend,<sup>1</sup> Bettina Erdmann,<sup>1</sup> Werner W. Franke,<sup>2</sup> and Walter Birchmeier<sup>1</sup>

<sup>1</sup>Max Delbrueck Center for Molecular Medicine (MDC), D-13092 Berlin, Germany

<sup>2</sup>Division of Cell Biology, German Cancer Research Center (DKFZ), D-69120 Heidelberg, Germany

**P**lakophilins are proteins of the armadillo family that function in embryonic development and in the adult, and when mutated can cause disease. We have ablated the plakophilin 2 gene in mice. The resulting mutant mice exhibit lethal alterations in heart morphogenesis and stability at mid-gestation (E10.5–E11), characterized by reduced trabeculation, disarrayed cytoskeleton, ruptures of cardiac walls, and blood leakage into the pericardiac

cavity. In the absence of plakophilin 2, the cytoskeletal linker protein desmoplakin dissociates from the plaques of the adhering junctions that connect the cardiomyocytes and forms granular aggregates in the cytoplasm. By contrast, embryonic epithelia show normal junctions. Thus, we conclude that plakophilin 2 is important for the assembly of junctional proteins and represents an essential morphogenic factor and architectural component of the heart.

## Introduction

Proteins of the armadillo family are characterized by repeats of the arm motif, and include molecules such as  $\beta$ -catenin, plakoglobin, p120<sup>cas</sup>, and the plakophilins (Cowin et al., 1986; Nagafuchi and Takeichi, 1989; Ozawa et al., 1989; Peifer and Wieschaus, 1990; McCrea et al., 1991; Hülken et al., 1994; Hatzfeld, 1999). Arm repeat proteins bind to the cytoplasmic part of glycoproteins of the cadherin family of cell adhesion molecules, thus forming plaques to which bundles of cytoskeletal filaments are tethered (for reviews see Takeichi, 1995; Smith and Fuchs, 1998; Green and Gaudry, 2000).  $\beta$ -Catenin also plays a crucial role in the canonical Wnt pathway, which transduces developmental and oncogenic signals from the cell surface to the nucleus (Behrens et al., 1996; Eastman and Grosschedl, 1999; Hecht et al., 1999; Bienz and Clevers, 2000). Mutations of plakoglobin in humans (Naxos disease) and in mice have been reported to result in heart, skin, and hair follicle dysfunctions, a complex phenotype that might involve both adhesion and signaling disorders (Bierkamp et al., 1996; Ruiz et al., 1996; McKoy et al., 2000). A remarkably similar triad of cardiomyopathy, woolly hair, and keratoderma has been noted in patients suffering from mutations in the gene encoding desmoplakin, another junctional plaque protein (Nor-

gett et al., 2000; Rampazzo et al., 2002; Alcalai et al., 2003). Plakophilin 1 mutations in humans result in skin fragility-ectodermal dysplasia syndrome, consistent with the restriction of plakophilin 1 expression to certain stratified epithelia and its function in keratinocyte adhesion (McGrath et al., 1997; Whittock et al., 2000; Hamada et al., 2002; Sprecher et al., 2004).

Two types of “classical” cell–cell junctions are found in vertebrates, adherens junctions and desmosomes, which have one plaque protein in common, plakoglobin (Cowin et al., 1986). In adherens junctions that comprise morphologically diverse forms such as *puncta adherentia*, *fasciae adherentes*, and *zonulae adherentes*,  $\beta$ -catenin links cadherins to  $\alpha$ -catenin, thus mediating interaction with the actin cytoskeleton (Boller et al., 1985; Nagafuchi and Takeichi, 1989; Ozawa et al., 1989; Hülken et al., 1994; Aberle et al., 1996). Typical desmosomes (*maculae adherentes*), which are characterized by the plaque protein desmoplakin (Franke et al., 1982), are found in epithelial cells, cardiomyocytes, meningotheial cells, and dendritic reticulum cells of lymph node follicles, where they anchor bundles of intermediate-sized filaments (IFs) of the cytokeratin, the desmin, or the vimentin type, respectively (Kartenbeck et al., 1983, 1984; Franke and Moll, 1987; Kuruc and Franke, 1988; van der Loop et al., 1995). In addition, desmoplakin has also been identified in the *complexus adherens*, an adhering junction characteristic of some endothelia, where it is essential for vascular development, as demonstrated by gene ablation in mice (Schmelz and Franke, 1993; Schmelz et al., 1994; Valiron et al., 1996; Kowalczyk et al., 1998; Gallicano et al., 2001; Zhou et al., 2004).

Correspondence to Walter Birchmeier: wbirch@mdc-berlin.de

J. Huelsken's present address is ISREC, CH-1066 Lausanne, Switzerland.

M. Behrend's present address is Franz Volhard Clinic, D-13125 Berlin, Germany.

Abbreviations used in this paper: ES, embryonic stem; IF, intermediate-sized filament; wt, wild-type.

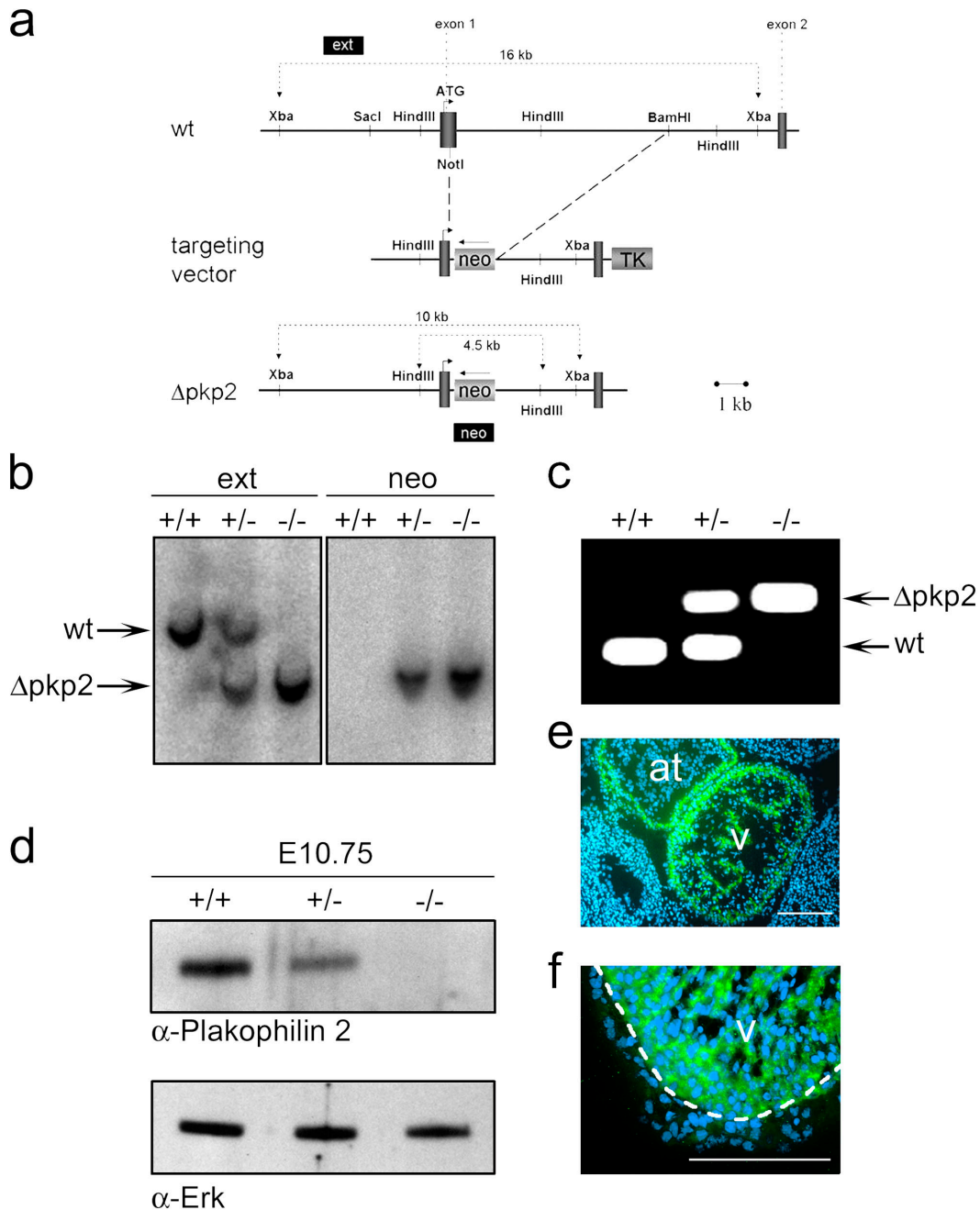
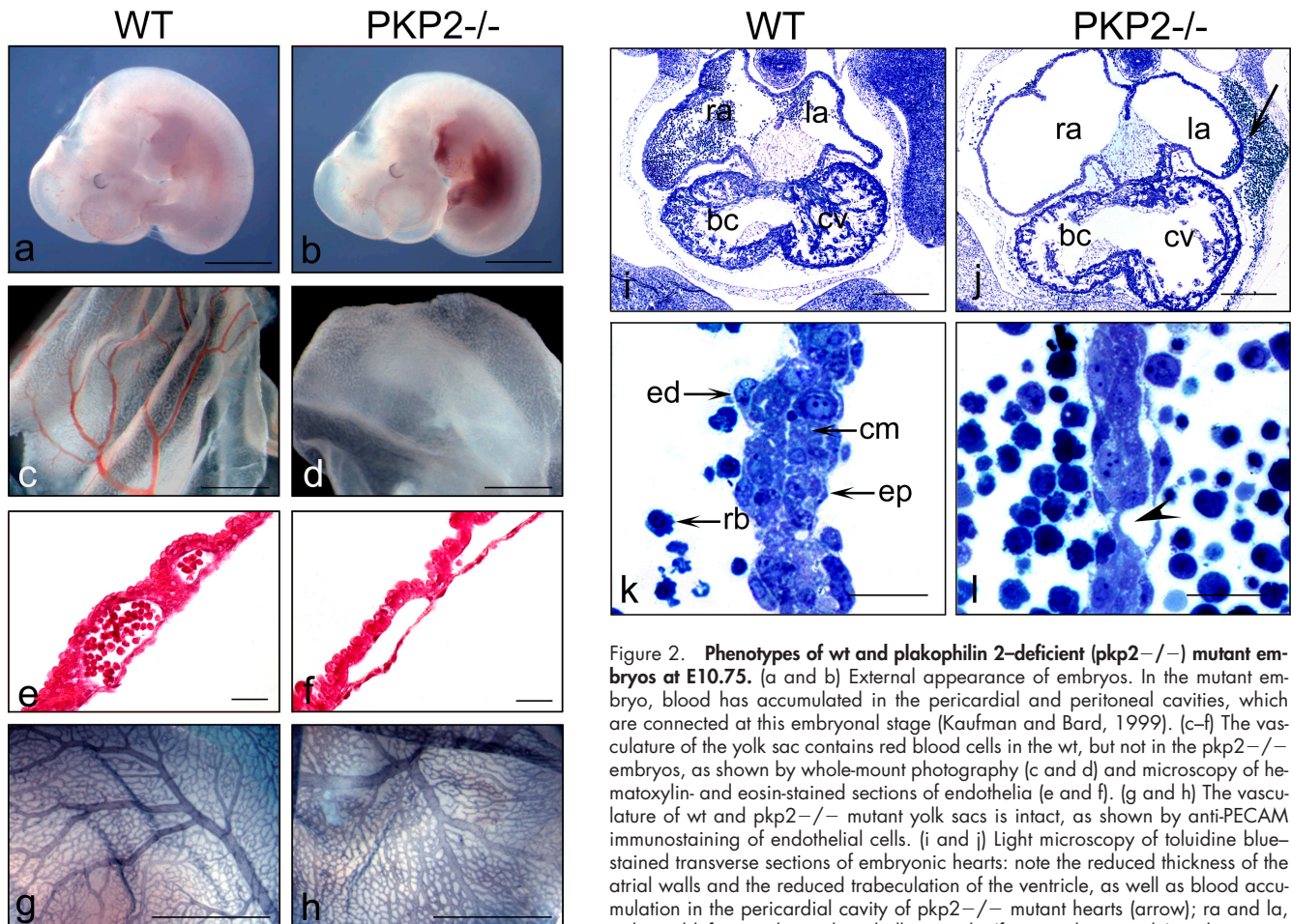


Figure 1. **Strategy used to disrupt the plakophilin 2 gene.** (a) Schematic representation of the plakophilin 2 targeting vector and the wt and mutant ( $\Delta$ pkp2) plakophilin 2 locus. Exon sequences are represented by gray boxes; the neo cassette has been fused in opposite transcriptional orientation to codon 43 of the first exon. Probes used for Southern hybridization are indicated by black horizontal boxes (ext, neo). The sizes of restriction fragments by XbaI and HindIII digests are indicated. (b) Southern blot analysis of the plakophilin 2 locus from wt (+/+) and plakophilin 2 heterozygous (+/-) and homozygous (-/-) E10.75 embryos, as examined by external (ext) and neo probes. (c) PCR analysis of the plakophilin 2 locus of wt (+/+), heterozygous (+/-), and homozygous (-/-) mutant embryos. (d) Western blot analyses for plakophilin 2 synthesis in wt, heterozygous, and homozygous mutant embryos of E10.75. The loading control was performed with an Erk antibody. (e and f) Immunofluorescence microscopy for plakophilin 2 of wt hearts at (e) E10.75 and (f) E13.75, using antibodies against the COOH terminus of plakophilin 2. Counterstaining of nuclei was with DAPI. For clarity, a dotted line marks the tissue border between cardiomyocytes and epicard. at, atrium; v, ventricle. Bars, 200  $\mu$ m.

The plakophilin subfamily of arm repeat proteins comprises three members, plakophilins 1–3 (Kapprell et al., 1988; Hatzfeld et al., 1994, 2000; Heid et al., 1994; Schmidt et al., 1994, 1997, 1999; Mertens et al., 1996, 1999; Bonn e et al., 1999). The arm protein p0071, occasionally also called plakophilin 4, is more closely related to another armadillo subfamily comprising proteins p120<sup>cas</sup>, ARVCF, and neurojungin

(Schmidt et al., 1999). Plakophilins 1–3 are juxtamembranous constituents of plaques of desmosomes and certain related junctions where they are tightly associated with other arm proteins, cadherins and desmoplakin, and are involved in the anchorage of IFs (Hatzfeld and Nachtsheim, 1996; Mertens et al., 1996, 1999; Schmidt et al., 1997, 1999; Bonn e et al., 1999; Kowalczyk et al., 1999; North et al., 1999; Hatzfeld et



**Figure 2. Phenotypes of wt and plakophilin 2-deficient (*pkp2*<sup>-/-</sup>) mutant embryos at E10.75.** (a and b) External appearance of embryos. In the mutant embryo, blood has accumulated in the pericardial and peritoneal cavities, which are connected at this embryonal stage (Kaufman and Bard, 1999). (c–f) The vasculature of the yolk sac contains red blood cells in the wt, but not in the *pkp2*<sup>-/-</sup> embryos, as shown by whole-mount photography (c and d) and microscopy of hematoxylin- and eosin-stained sections of endothelia (e and f). (g and h) The vasculature of wt and *pkp2*<sup>-/-</sup> mutant yolk sacs is intact, as shown by anti-PECAM immunostaining of endothelial cells. (i and j) Light microscopy of toluidine blue-stained transverse sections of embryonic hearts: note the reduced thickness of the atrial walls and the reduced trabeculation of the ventricle, as well as blood accumulation in the pericardial cavity of *pkp2*<sup>-/-</sup> mutant hearts (arrow); ra and la, right and left atria; bc and cv, bulbus cordis (future right ventricle) and common ventricle (future left ventricle). (k and l) Higher magnifications of atrial walls in wt and plakophilin 2<sup>-/-</sup> mutant hearts. In general, the atrial walls appear thinner in the mutant (l). The position of a possible small leakage site is indicated (arrowhead) in the mutant hearts (l); ed, endocardial cells; ep, epicardial cells; cm, cardiomyocytes; rb, red blood cells. Bars: 1,000  $\mu$ m (a, b, c, d, g, and h), 100  $\mu$ m (e and f), 300  $\mu$ m (i and j), 50  $\mu$ m (k and l).

al., 2000; Bornslaeger et al., 2001; Chen et al., 2002; Koester et al., 2003). Plakophilins are also detected in the nucleus; for example, plakophilin 2 has been found in association with nucleoplasmic RNA polymerase III complexes (Mertens et al., 1996, 2001; Schmidt et al., 1997, 1999; Bonn e et al., 1999). Although the function of  $\beta$ -catenin in the nucleus is well known (Behrens et al., 1996; Eastman and Grosschedl, 1999; Hecht et al., 1999; Bienz and Clevers, 2000), similar roles for plakophilins have not yet been established. Plakophilin 2 occurs in all proliferative epithelial tissues and tumors as well as in the cardiomyocytes and Purkinje fiber cells of the heart (Mertens et al., 1996, 1999).

Striking similarities exist between the phenotypes generated by human and mouse mutations of desmosomal proteins (Ruiz et al., 1996; Bierkamp et al., 1996; Gallicano et al., 1998, 2001; Armstrong et al., 1999; McKoy et al., 2000; Norgett et al., 2000; Vasioukhin et al., 2001; Rampazzo et al., 2002; Alcalai et al., 2003). No mutations for plakophilin 2, which is the only plakophilin gene expressed in the heart, had been reported. Here, we describe the phenotype of plakophilin 2-deficient mouse embryos, showing distortions of heart morphogenesis and stability, followed by cardiac rupture, blood leakage, and embryonic death. The analysis of the molecular organiza-

tion of the affected tissue has allowed us to propose a molecular mechanism for these alterations as well as a general role of plakophilin 2 in junctional plaque organization.

## Results

### Generation of plakophilin 2 mutant mice

We generated a null mutation of the plakophilin 2 gene by homologous recombination in embryonic stem (ES) cells. In the targeting vector, a neo cassette inserted in opposite transcriptional orientation replaced a 7.8-kb genomic fragment from the NotI site in exon 1 to the BamHI site in intron 1 (Fig. 1 a). Ho-

**Table 1. Viability of embryos resulting from heterozygous intercrosses**

Stage	+/+	+/-	-/-
E9.75	32% (15)	40% (19)	28% (13)
E10.75	26% (25)	48% (46)	26% (25)
E11.5	29% (21)	49% (35)	22% (16)
	-	-	7% <sup>a</sup> (5)
E13.75	30% (4)	69% (9)	0%

<sup>a</sup>The number of dead homozygous mutant embryos; the number of tested embryos is in parentheses.

mologous recombination events were identified by Southern blot analyses (Fig. 1 b): an external probe (ext) yielded a novel Xba fragment of 10 kb in the mutant,  $\Delta$ pkp2 (the wild-type [wt] fragment is 16 kb), and the neo probe produced a 4.5-kb HindIII fragment. We generated a null mutation in the plakophilin 2 gene after homologous recombination because insertion of neo prevents splicing between exon 1 and 2 and leads to an early stop of plakophilin 2 translation after 43 aa. Using two lines of mutant ES cells, we produced plakophilin 2 mutant chimeric and heterozygous mice that were healthy and fertile. However, matings between heterozygous mice produced no live plakophilin 2-deficient offspring, implying that the mutant embryos died during embryogenesis. To determine the time of death, embryos from different developmental stages were genotyped by PCR (Fig. 1 c) and inspected visually. Up to day 10.75 of embryogenesis (E10.75), the expected Mendelian ratio of homozygous mutant embryos was observed (Table I); however the mutant embryos showed blood accumulation in the pericardial and peritoneal cavities. At E11.5, the number of viable plakophilin 2  $-/-$  embryos declined, as judged by PCR genotyping and lack of heart beating. Western blot analyses using an antibody against the COOH terminus of plakophilin 2 indicated absence of full-length or truncated protein in E10.75 plakophilin 2  $-/-$  embryos (Fig. 1 d). In wt embryos at E10.75, plakophilin 2 was prominent in cardiomyocytes of the atrium and the ventricle of the heart (Fig. 1 e), and expression was lost in the null mutation embryos (see also below, Fig. 4 Bd', and Fig. 8). At E13.75, plakophilin 2 was intensely synthesized in the wt cardiomyocytes, but less in the surrounding epicard (Fig. 1 f).

#### Defects in heart morphogenesis of plakophilin 2 $-/-$ embryos

To determine the cause of lethality in plakophilin 2-deficient mice, we examined embryos at E9.5 and later stages of development. Homozygous embryos at E10.75 were pale in the head and the dorsal trunk region, i.e., blood was not distributed homogeneously but had accumulated in the pericardial cavity and also in the peritoneal cavity (Fig. 2, a and b). Similarly, blood was not found in the blood vessels of the yolk sacs of homozygous plakophilin 2  $-/-$  embryos (Fig. 2, c and d; see section through blood vessels in Fig. 2, e and f). The vasculature appeared to be largely intact, as determined by PECAM staining, although some minor alterations in the overall pattern of the blood vessel network could be recognized (Fig. 2, g and h). Transverse sections through the forming heart of the plakophilin 2 mutants at E10.75 showed reduced trabeculation in the heart ventricles (Fig. 2, i and j) and thinner walls of the atria, as in some places two cell layers instead of three to four in the wt embryos were observed (Fig. 2, k and l; see also Fig. 3 and Sedmera et al., 2000). No alterations in cell proliferation and apoptosis were seen in mutant hearts, as determined by anti-phosphohistone 3 and TUNEL staining (unpublished data). Overt rupture of heart walls, as previously found in plakoglobin-deficient mutant embryos (Ruiz et al., 1996), could not be detected, indicating that blood leakage occurred through small perforations of the beating heart (the position of

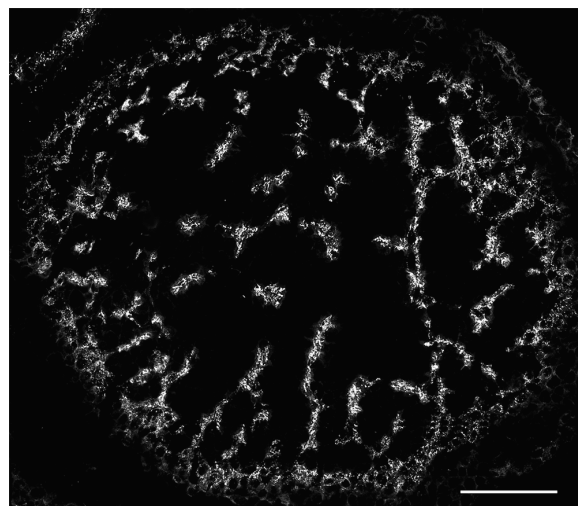


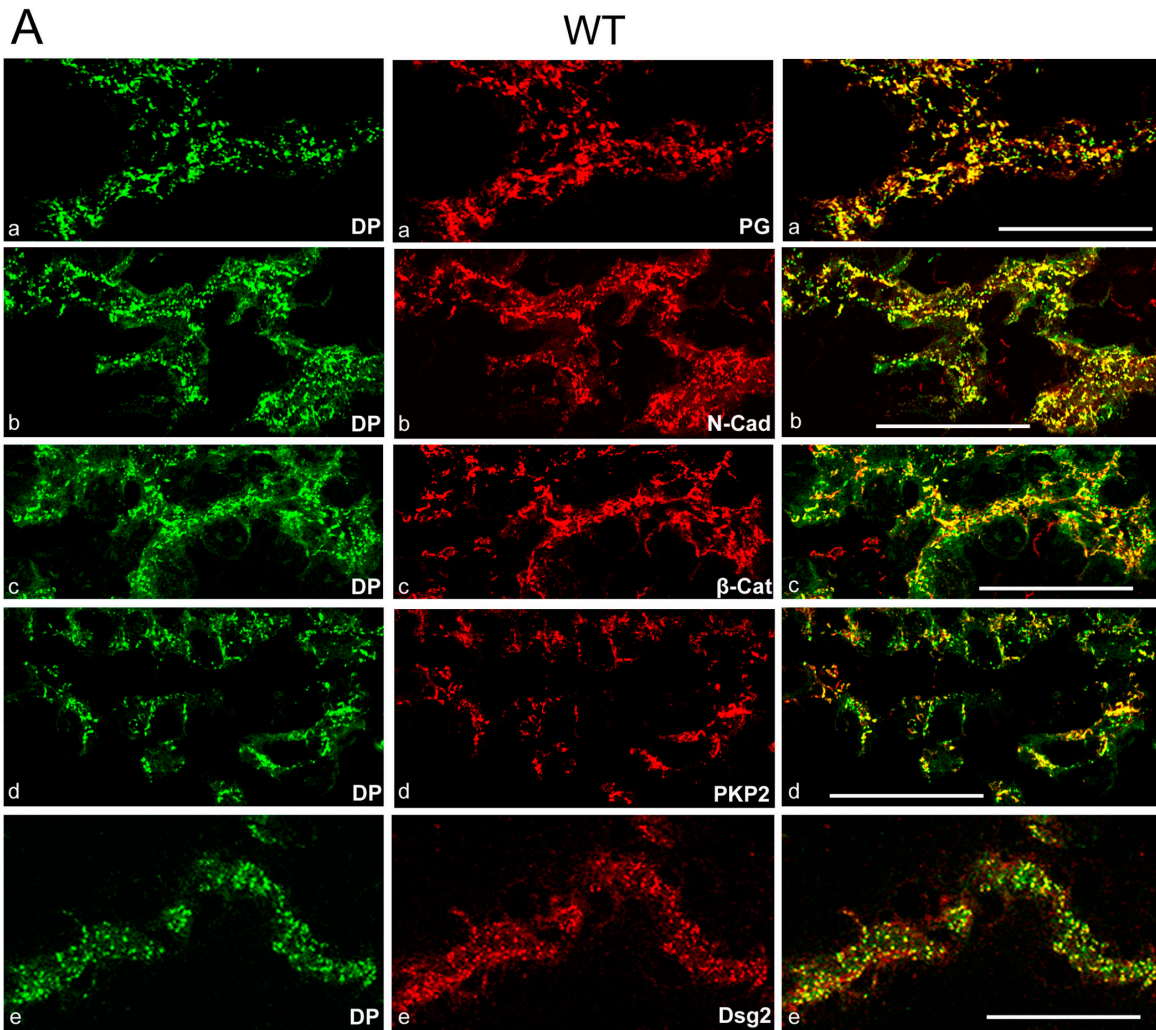
Figure 3. Survey immunofluorescence micrograph of a sagittal cryostat section through the ventricle of a whole E10.75 wt embryonic heart, reacted with mAbs to desmoplakin. Note the predominantly "spongy" trabecular organization of the myocardial tissue, visualized here by the punctate pattern of desmoplakin-containing adhering junctions in the trabeculae surrounding and traversing the forming ventricle (for histological details see Moorman and Lamers, 1999). Bar, 20  $\mu$ m.

a possible small leakage site is denoted by an arrowhead in Fig. 2 l). Homozygous embryos of earlier stages (E9.5–E10) did not show blood leakage into the pericard, whereas embryos of E11.5–E12 displayed, in addition to blood leakage, swollen pericardial and peritoneal cavities, before they became necrotic (unpublished data).

#### Changes of cytoskeletal architecture and composition of adhering junctions in hearts of plakophilin 2 $-/-$ embryos

Desmoplakin represents a major and functionally essential component of adhering junctions in the intercalated disks that connect cardiomyocytes (Franke et al., 1982; Gallicano et al., 2001). In the wt embryonic heart at E10.75, desmoplakin was distributed throughout the trabeculae in a complex punctate pattern at cell-cell borders of both proliferating and differentiating cardiomyocytes (Fig. 3; see also Moorman and Lamers, 1999).

Confocal laser-scanning, double-label immunofluorescence microscopy was used to examine molecular localizations in the intercalated disks of wt and mutant embryonic hearts (Fig. 4, A and B). In wt hearts at E10.75, desmoplakin (green fluorescence) showed far-reaching colocalization with the junctional proteins plakoglobin, N-cadherin,  $\beta$ -catenin, plakophilin 2, desmoglein Dsg2 (red fluorescence),  $\alpha$ -catenin, and p120<sup>cas</sup>, as demonstrated by the merged yellow fluorescence (Fig. 4 A, right column; unpublished data). However, in the plakophilin 2-deficient mutants desmoplakin did not colocalize with any of these junction proteins (Fig. 4 B, right column), but was rather dispersed over the cytoplasm, mostly away from the intercalated disks. Our immunolocalization analyses also confirmed that plakophilin 2 was absent in these mutants (Fig. 4 Bd'). Surprisingly, the desmosomal cadherin desmoglein 2 could not be localized at significant levels in the plakophilin 2-devoid hearts (Fig. 4 Be').



**Figure 4. Major architectural and compositional changes of the adhering junctions in the intercalated disks of hearts in plakophilin 2-deficient E10.75 mouse embryos.** Laser-scanning, double-label immunofluorescence microscopy of cryostat sections through cardiac tissue, performed with wt and plakophilin 2-deficient (*pkp2*<sup>-/-</sup>) embryos. Specific combinations of antibodies were used: rabbit antibodies to desmoplakin (DP, marked by green fluorescence) and murine mAbs to diverse other cardiac adhering junction components (red fluorescence): (a and a') plakoglobin (PG); (b and b') N-cadherin (N-Cad); (c and c') β-catenin (β-Cat); (d and d') plakophilin 2 (PKP2); (e and e') desmoglein 2 (Dsg2). The merged fluorescence images are shown in the right-hand column. (A) In the wt embryos, the special adhering junctions of the intercalated disks show far-reaching colocalization (yellow) of desmoplakin with (a) plakoglobin, (b) N-cadherin, (c) β-catenin, (d) plakophilin 2, and (e) desmoglein 2. Other known plaque proteins of cardiac adhering junctions show identical localization, including p120<sup>cas</sup> and α-catenin (see also Janssens et al., 2001). (B) By contrast, in the *pkp2*<sup>-/-</sup> embryos none of the plaque proteins colocalize with desmoplakin (a'–e'). In the mutants, desmoplakin is dispersed over the cytoplasm, often appearing in granular aggregates (green dots). (d') Complete absence of plakophilin 2 immunostaining in the mutant embryos is shown. (e') Note that Dsg2 is not detectably enriched in the intercalated disks of the mutants. Bars, 50 μm.

Electron microscopy showed that throughout mid-gestation, the cardiomyocytes of the wt embryos were connected by well-organized intercalated disks that were rich in both types of adhering junctions, the *fascia adhaerens*-like and the desmosome-like subforms (Fig. 5 a). In the hearts of plakophilin 2 <sup>-/-</sup> mutants, these two morphotypes of adhering junctions were difficult to distinguish (Fig. 5 b). Electron microscopy and immunogold labeling of wt hearts demonstrated that desmoplakin was located in the plaques of both the desmosome-like and *fascia adhaerens*-type junctions (Fig. 5, c, e, and g), confirming previous observations (Borrmann, 2000), although a somewhat higher intensity of labeling was generally seen in the more desmosome-like junctions (Fig. 5 e, compare right-hand with left-hand junction). “Fused” type junctions with continuous desmoplakin or plakophilin 2 label-

ing were also consistently observed in wt hearts (Fig. 5, g and h). Both morphotypes of adhering junctions were also strongly positive for the major transmembrane glycoprotein, N-cadherin (Fig. 5 k).

By contrast, in the hearts of the plakophilin 2-deficient embryos the location of desmoplakin was drastically altered: immunogold labeling demonstrated that desmoplakin was virtually absent from all junctions (Fig. 5, d and f). Instead, desmoplakin immunolabel was found in sparse distribution over the cytoplasm and often appeared at dense granular aggregates of diameters of up to 1 μm, mostly located deep between the bundles of myofibrils or in association with the tangles of IFs (Fig. 5, i and j), which were positive for desmin and for vimentin (unpublished data). However, the distribution of N-cadherin and other plaque components examined

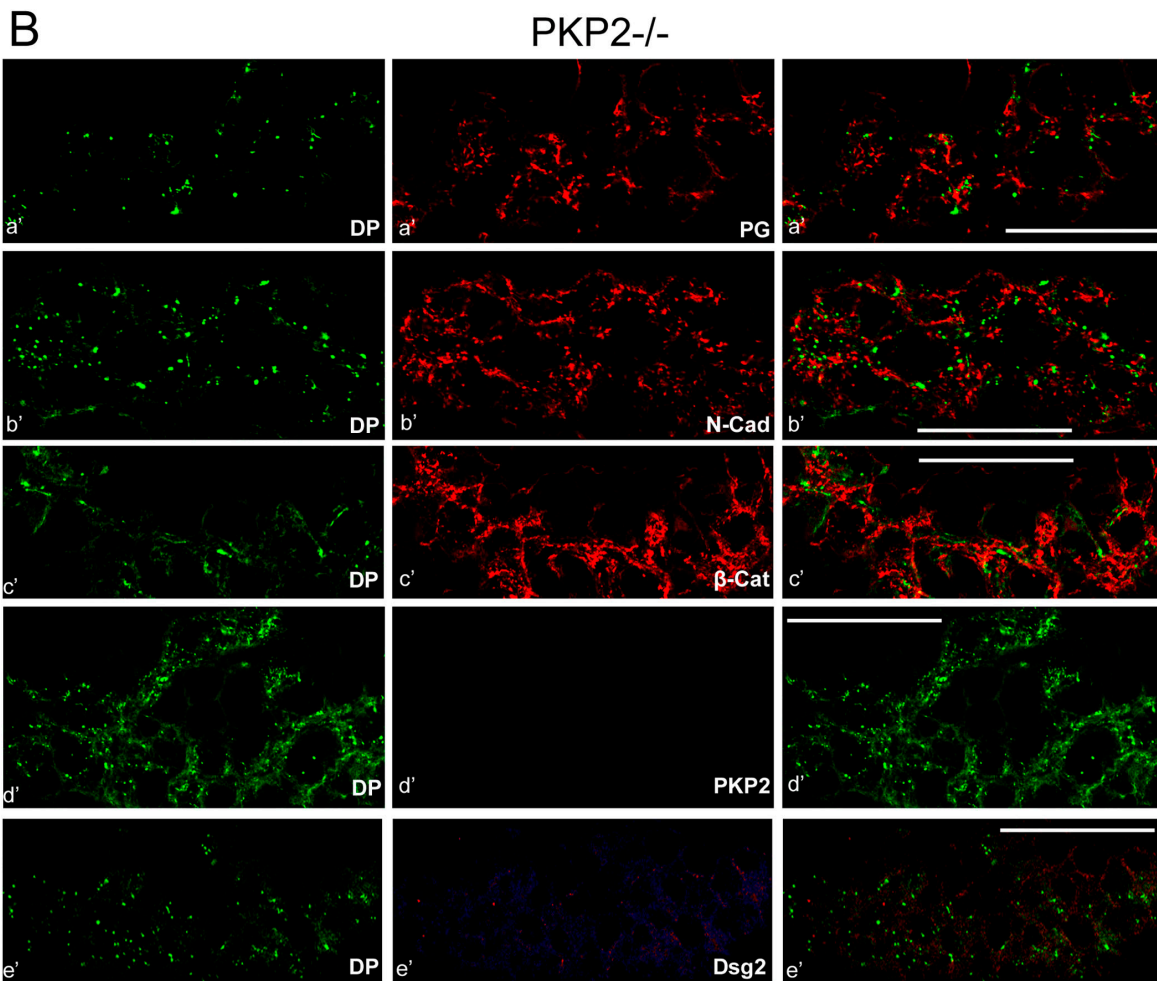


Figure 4 (continued from previous page)

(e.g.,  $\alpha$ - and  $\beta$ -catenin) was not significantly altered in the hearts of the wt and the plakophilin 2-deficient embryos (Fig. 5, k and l; unpublished data). In many places, IF arrays appeared locally displaced by the aggregates of desmoplakin granules (Fig. 5, i and j). The extent of changes of cytoskeletal organization in the absence of plakophilin 2 is presented at higher magnification in Fig. 6: we frequently observed conspicuous IF arrays, which appeared as extensive swirls of disordered filaments around the dense desmoplakin aggregates (Fig. 6, arrow). In addition, some desmoplakin immunolabel was always identified in association with the extensive IF tangles (Fig. 6).

Remarkably, the ultrastructure of adherens junctions and desmosomes in epithelial tissues, such as in the forming epidermis and in stomach mucosa, was not altered in the plakophilin 2-deficient mutant mice (Fig. 7). Similarly, no significant morphological changes were noted in the aorta as well as in endothelia of blood vessels (unpublished data).

#### Biochemical differences of molecular complexes in adhering junctions of embryonic hearts

It has previously been demonstrated that in tissues as well as in monolayer cell cultures of epithelial cells and of cardio-

myocytes, junctional proteins such as plakophilins are to a large extent associated with the cytoskeleton and thus not readily extractable by nondenaturing detergents such as Triton X-100 or NP-40 at moderate ionic strength (Mertens et al., 1996, 2001; Bornslaeger et al., 2001; Koeser et al., 2003). Similarly, we found that in the forming hearts of wt embryos large proportions of desmoplakin, plakoglobin,  $\beta$ -catenin, and plakophilin 2 (but also of the transmembrane glycoproteins N-cadherin and desmoglein 2) were detergent insoluble (Fig. 8, left column). In contrast, in plakophilin 2-deficient embryonic hearts, desmoplakin and desmoglein 2, and in part also plakoglobin were largely Triton X-100 soluble (i.e., less stably associated with the cytoskeleton), whereas the cytoskeletal associations of N-cadherin and  $\beta$ -catenin were unchanged (Fig. 8, compare left and right column). In addition, low amounts of desmoglein 2 were recovered from mutant embryonic hearts (Fig. 8, compare left and right columns). We conclude from these biochemical data that the association of desmoplakin and plakoglobin, but also of desmosomal cadherins with their partners in the cardiac junctional plaques, is strongly reduced in the plakophilin 2-deficient embryonic hearts, consistent with reduced architectural stability of the intercalated disks.

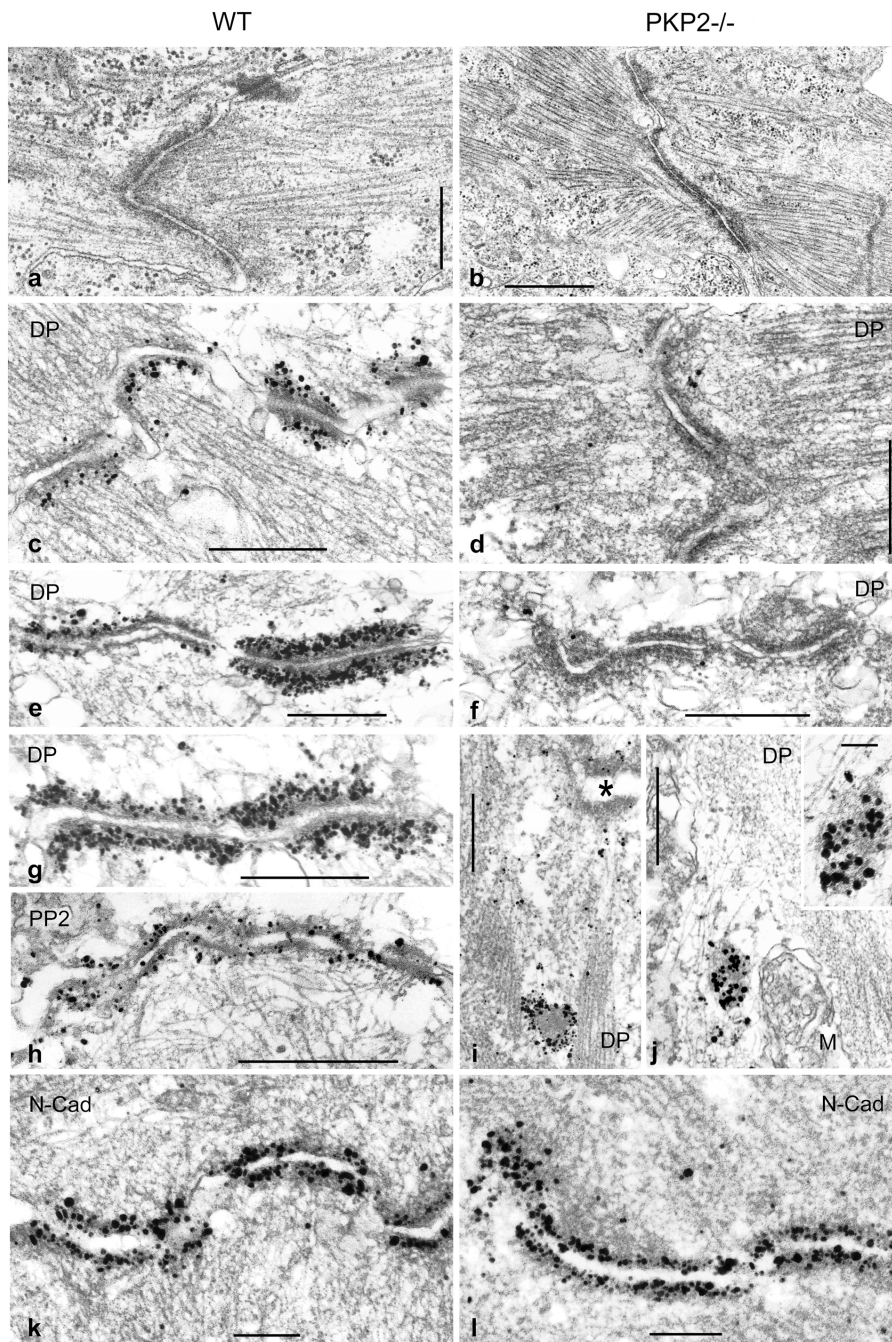


Figure 5. **Dissociation of desmoplakin from the cardiac adhering junctions (*areae compositae*) in the absence of plakophilin 2.** Electron (a and b) and immunoelectron (c–l) microscopy of ultrathin sections through intercalated disk junctions that connect cardiomyocytes of forming hearts in wt and plakophilin 2-deficient (*pkp2*<sup>-/-</sup>) E10.75 embryos. Desmosome-like structures (an example is seen in the top part of a) are not seen in the *pkp2*<sup>-/-</sup> embryos (b). Although the electron microscopic appearance of plaque-bearing junctions of the *fascia adherens* type is similar in both the wt and the mutant embryos (bottom part of a and b), the localization of desmoplakin (DP), as seen in immunoelectron micrographs (c–g, i, and j), is drastically altered: in the wt embryos, desmoplakin immunogold label is enriched in plaques of both morphotypes of adhering junctions (c and e), usually with higher label intensity at desmosome-like structures (e, compare the right hand junction with the *fascia adherens*-like junction in the left), including “fused” junctions with a practically continuous DP positivity (g). The same localization is seen for plakophilin 2 immunolabel in the wt hearts (h). By contrast, the *pkp2*<sup>-/-</sup> embryos show no desmoplakin enrichment at junctional plaques. Instead, DP label is dispersed over the cytoplasm, showing no significant enrichment at plaques (d and f), and is markedly enriched in dense granular aggregates of various sizes occurring throughout the cytoplasm, where they are interspersed between myofibrillar bundles (i) or in close association with loose arrays of IFs (j, for higher magnification see the inset). In contrast, other constituent proteins of these junctions are detected at comparable intensity in both wt and *pkp2*<sup>-/-</sup> embryos (k and l present the comparison for N-cadherin). Bars: 1  $\mu$ m (b), 0.5  $\mu$ m (a, c–g, i, and j), 0.2  $\mu$ m (h, k, and l), and 0.1  $\mu$ m (j, inset). Asterisk marks a cell junction devoid of desmoplakin.

Downloaded from www.jcb.org on April 29, 2008

## Discussion

Ablation in mice of the gene encoding plakophilin 2, a widespread protein with dual location in intercellular junctions and in nuclei, results in lethal cardiac damage at mid-gestation. Defective cell–cell adhesion at the intercalated disks and leakage of blood into the pericardial cavity is observed, and electron microscopic as well as biochemical data demonstrate a markedly reduced association of plaque proteins such as desmoplakin and plakoglobin with the junctional structures. These alterations occur at similar time periods (E10.5–E12) and with similar pathological alterations as those previously shown for the ablations of another arm protein plaque constituent, plakoglobin (Bierkamp et al., 1996; Ruiz et al., 1996), and in part for

the cell–cell adhesion molecule N-cadherin (Radice et al., 1997). Ablations of the genes encoding the cytoskeletal linker protein desmoplakin (Gallicano et al., 1998) and the desmosomal cadherin *Dsg2* (Eshkind et al., 2002), two other major components of cardiac adhering junctions, disrupt earlier stages of embryogenesis, but specific damage in embryonic hearts has been noted upon partial rescue of desmoplakin (Gallicano et al., 2001; Zhou et al., 2004). We conclude from these results that (1) the developing embryonic heart is particularly vulnerable to diverse forms of weakening of cardiomyocyte adhesion, and (2) plakophilin 2 is a key organizer of cardiac architecture during embryogenesis. The latter conclusion is in line with several observations on plakophilin 2-binding proteins in other cultured cells (Chen et al., 2002; Koeser et al.,

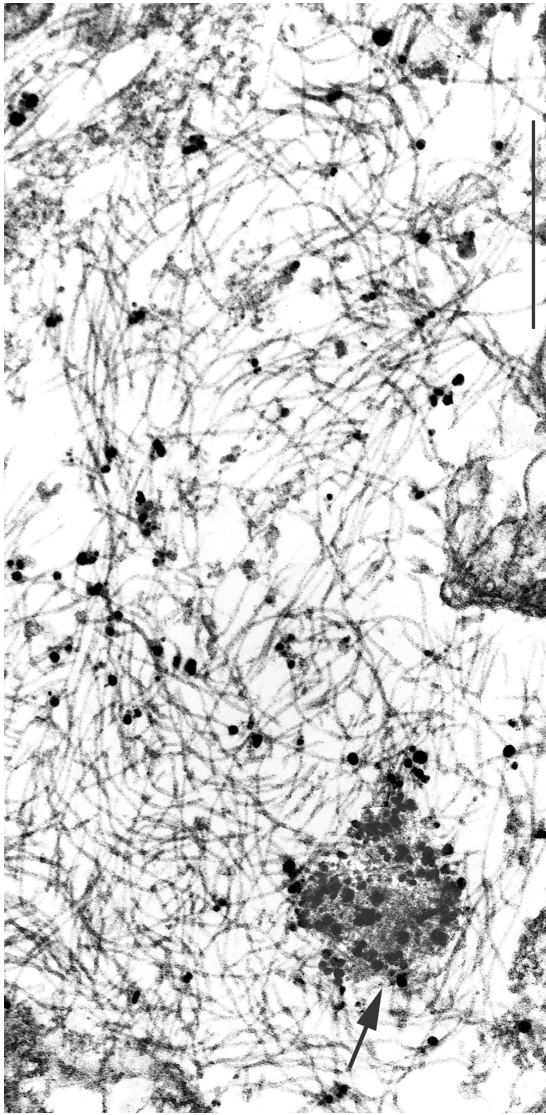


Figure 6. IFs around a granular desmoplakin aggregate in a cardiomyocyte of a plakophilin 2-deficient E10.75 mouse embryo. Immunoelectron micrograph of an ultrathin section, showing a typical dense granular aggregate (arrow) containing desmoplakin surrounded by extended swirls of nonordered, loosely arranged IFs. Note the occurrence of desmoplakin gold label in the aggregate, as well as being distributed in a dispersed state over the entire IF swirl. Bar, 0.5  $\mu\text{m}$ .

2003). The fact that plakophilin 2 is the only plakophilin present in cardiac adhering junctions may explain this extraordinary sensitivity in mutant hearts.

The analysis of the molecular changes in the cytoskeletal architecture of the plakophilin 2 mutant hearts has, however, revealed striking differences to ablations of plakoglobin and N-cadherin: while in plakoglobin-deficient embryonic hearts desmoplakin remains firmly associated with the plaques of the adhering junctions (Ruiz et al., 1996), this protein is no longer associated with the junctions in the absence of plakophilin 2. Rather, in the plakophilin 2-deficient embryonic hearts desmoplakin is dispersed over the cytoplasm, where it frequently forms sizable aggregates located between the myofibril and IF arrays, away from the intercalated disks. We conclude therefore that it is plakophilin 2, possibly together with plakoglo-

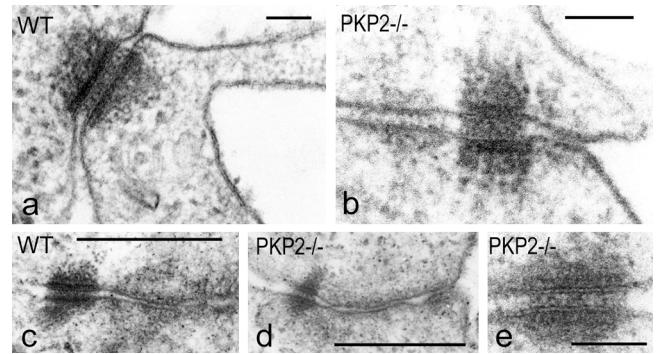


Figure 7. Electron micrographs showing near-normal morphology of adhering junctions in epithelial tissues at E10.75 of wt and plakophilin 2-deficient embryos. (a and b) In the periderm of the developing epidermis of both wt (a) and *pkp2*<sup>-/-</sup> (b) embryos, desmosomes with similar ultrastructure are seen, often adjacent to small adherens junctions (e.g., to the left of the desmosome in b). (c, wt; d and e, *pkp2*<sup>-/-</sup>) Similarly, both desmosomes and adherens junctions are seen side by side in other forming epithelia such as in the stomach mucosa. The higher magnification picture (e) reveals normal plaque thickness and density, trilaminar membrane appearance, and bridge structures in the intermembranous desmoglea structure. Bars: 0.1  $\mu\text{m}$  (a, b, and e) and 0.5  $\mu\text{m}$  (c and d).

bin, which is essential for fixing desmoplakin to the junctional plaques of cardiomyocytes. Our work also shows that both plakophilin 2 and desmoplakin are not required for the anchorage of myofibrils to adhering junctions of cardiomyocytes (see Fig. 5, a and b), as this has also been shown for plakoglobin (Isac et al., 1999). By contrast, the IF arrays normally interspersed between the myofibrils and enriched at the intercalated disks (e.g., Kartenbeck et al., 1983; Milner et al., 1996) are often displaced in the mutant, but still display associations with desmoplakin, including formations of swirls around the desmoplakin aggregates. These associations between IFs and desmoplakin away from the plasma membrane reflect the intimate binding of these proteins, compatible with results in cultured epithelial cells (Stappenbeck and Green, 1992; Stappenbeck et al., 1993; Kouklis et al., 1994; Bornslaeger et al., 1996, 2001; Smith and Fuchs, 1998; Kowalczyk et al., 1999; Vasioukhin et al., 2001; Chen et al., 2002). Our immunolocalization and biochemical data also demonstrate that in the plakophilin 2-deficient mouse embryos, several proteins of the armadillo family such as  $\beta$ -catenin, p120<sup>cas</sup>, and also part of plakoglobin remain at the adhering junctions of the cardiac intercalated disks, despite the absence of plakophilin 2 and desmoplakin. This indicates that their binding to other plaque components, including the cytoplasmic portion of N-cadherin, is sufficient to secure their junctional integration. Plakophilin 2 binding, as reported from cell transfection and yeast two-hybrid experiments (Chen et al., 2002), is therefore not needed for association of  $\beta$ -catenin, p120<sup>cas</sup>, and part of plakoglobin with the cardiac junctions. However, the desmosomal cadherins (e.g., Dsg2) were largely absent from desmosomal junctions and were detergent extractable from mutant hearts. This higher detergent solubility of Dsg2 may be due to its exclusion from the cardiac junctions, similar to the detergent-extractable forms of nascent desmoglein from cultured cells (e.g., Pasdar and Nelson, 1989; Pasdar et al., 1991). Thus, our observations are compatible with reports on cultured cells that plakophilin 2



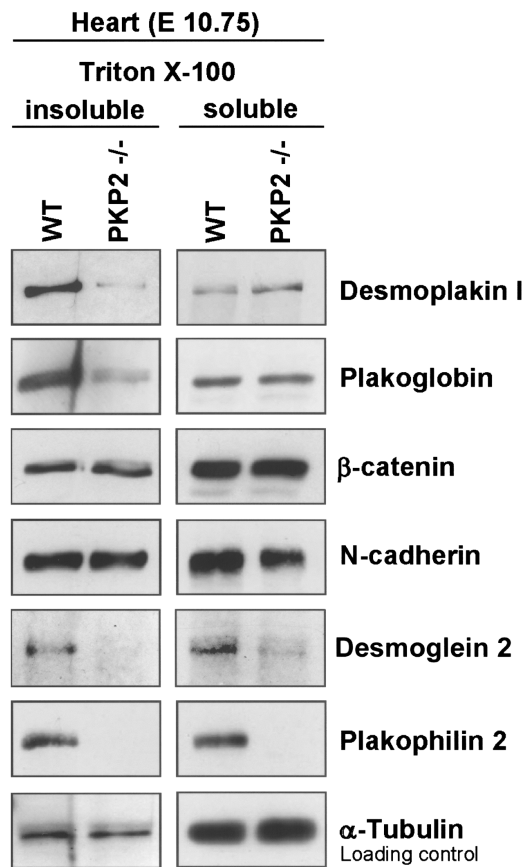


Figure 8. Triton X-100 solubility of junctional proteins in the hearts of wt and plakophilin 2 mutant (*pkp2*<sup>-/-</sup>) embryos at E10.75. Triton X-100 insoluble and soluble proteins were subjected to SDS-PAGE and the relative amounts of specific proteins were demonstrated by Western blotting using antibodies to junctional proteins as listed. Note that a large proportion of desmoplakin and desmoglein 2 and, to a lesser degree, plakoglobin, were not associated with the Triton X-100 insoluble (i.e., cytoskeleton-associated) fraction in the plakophilin 2-deficient hearts. Plakophilin 2 was absent in mutant hearts, and β-catenin as well as N-cadherin did not show marked differences between wt and *pkp2*<sup>-/-</sup> animals.

is a stabilizing binding partner of desmosomal cadherins (Chen et al., 2002; Koeser et al., 2003; see also Chitaev et al., 1996).

In contrast to the myocardium, several epithelia show normal-looking desmosomes in the plakophilin 2-deficient mutant embryos. These epithelia are known to contain plakophilin 3 (Bonné et al., 1998, 1999; Schmidt et al., 1999), which might structurally and functionally compensate for the absence of plakophilin 2. Whether plakophilin 1 can also compensate for plakophilin 2 in certain suprabasal epithelial cells (for in vitro experiments see Kowalczyk et al., 1999; Hofmann et al., 2000) remains to be examined. We have not been able to examine the functional roles of plakophilin 2 in epithelial differentiation and function, as the plakophilin 2<sup>-/-</sup> embryos die early.

Hereditary human cardiomyopathies are characterized by impaired myocardial contractility and ventricular dilatation, and frequently also affect myofibril function. Mutations in genes coding for components of the contractile apparatus have been identified in cardiomyopathy (Thierfelder et al., 1994). Mutation of titin, a large cytoskeletal and signaling protein of cardiac muscles, can result in dilated cardiomyopathy with congestive heart failure (Gerull et al., 2002). After our report

that ablation of the plakoglobin gene in mice leads to heart rupture (Ruiz et al., 1996), it has been found that Naxos disease is caused by deletion of plakoglobin that results in cardiomyopathy and skin defects (McKoy et al., 2000; Protonotarios et al., 2001; Narin et al., 2003). Mutations of desmoplakin and other junctional proteins in humans were recently also found to be associated with complex heart and skin disorders (Armstrong et al., 1999; Norgett et al., 2000; Alcalai et al., 2003; for reviews see Chidgey, 2002; Cheng and Koch, 2004). Therefore, it is tempting to speculate that other alterations of the plakophilin 2 gene than the null mutation reported here, or other types of interferences with plakophilin 2 function, might impair heart function and play a role in human heart disease.

## Materials and methods

### Generation of mutant mice

The mouse plakophilin 2 gene was isolated from a λ FIX II 129/SVJ library (Stratagene). Restriction analysis and PCR amplification were used to map and subclone fragments that encompass the exon containing the translation initiation site and downstream exons. The targeting vector was created using standard molecular biology techniques, and ES cells were electroporated and selected as described previously (Huelsenken et al., 2000). Recombined loci were analyzed by Southern blotting, and Western blotting was used to demonstrate that the modified plakophilin 2 locus produced a null allele. Two independent heterozygous ES cell clones of the mutated allele were used to generate chimeric mice by blastocyst injection (Huelsenken et al., 2000), and mutant animals were bred on a C57Bl6 background. PCR genotyping was performed using oligonucleotides 5'-GATCCTGGGTCACCTGGACA-3' and 5'-AGGGTCTGCTGCACCTGCT-3' for the wt allele, and 5'-GATCCTGGGTCACCTGGACA-3' and 5'-CTTGAGGGGATCGGCAATA-3' for the mutant allele.

### Histology and immunohistochemistry

Embryos and yolk sacs were fixed in PBS containing 4% formaldehyde freshly prepared from paraformaldehyde, washed, embedded in paraffin, and sections were stained with hematoxylin and eosin. Transverse Epon sections of wt and plakophilin 2-deficient embryos were stained with toluidine blue. For whole-mount immunohistochemistry, embryos were fixed in methanol/DMSO and incubated with primary anti PECAM-1 antibody (mAb; BD Biosciences), followed by incubation with secondary POD-conjugated donkey anti-rat antibody (Dianova) in 2% dissolved milk powder. DAB was used for color detection.

### Immunofluorescence microscopy

Cryostat sections of wt and homozygous plakophilin 2 mutant mouse embryos at E10.75 were fixed with acetone at -20°C for 10 min, and were incubated with guinea pig or mouse mAbs to plakophilin 2 (Mertens et al., 1996, 2001; Borrmann, 2000), antibodies to desmoplakin (mAb "DP mix" from Progen Biotechnik GmbH, or polyclonal rabbit antibodies from NaTuTec), murine mAbs, guinea pig or rabbit antibodies to desmoglein Dsg2 (Progen; Schmelz et al., 1986; Nuber et al., 1996; Schäfer et al., 1996; Kurzen et al., 1998), β-catenin (mAb; Zymed Laboratories), N-cadherin (mAb; Transduction Laboratories), or plakoglobin (mAb; Progen). Murine mAbs and guinea pig antibodies specific for cardiac α-actin, desmin and vimentin (all from Progen), or for plakophilin 2 (Mertens et al., 1996, 1999) were applied. Fixed sections were exposed to primary antibodies for 30 min, followed by three washes with PBS and incubation with secondary antibodies coupled to Alexa 568 or Alexa 488 (Molecular Biology) for 30 min. Samples were rinsed with PBS and mounted with Fluoromount (Biozol). Fluorescence micrographs were taken with Axiophot and LSM 510 microscopes (both from Carl Zeiss Microimaging, Inc.).

### Electron and immunoelectron microscopy

Embryos were dissected and fixed in 8% formaldehyde/0.1% glutaraldehyde in HEPES, osmicated, and embedded in Epon (Poly/Bed 812; Polysciences) using standard procedures. For immunoelectron microscopy, 5-μm-thick cryostat sections were mounted on coverslips, fixed for 10 min with 2% formaldehyde in PBS, permeabilized with 0.1% saponin in PBS for 5 min, and incubated for 1 h with the primary antibodies. After three washes with PBS, specimens were incubated with secondary, Nanogold-

conjugated antibodies (BioTrend) for 2–4 h. Further treatment, including silver enhancement of the gold particles, was as described previously (Langbein et al., 2002). Samples were dehydrated and flat-embedded in Epon. Ultrathin sections were examined with an electron microscope (model EM 910; Carl Zeiss Microimaging, Inc.).

#### Detergent extraction, gel electrophoreses, and Western blots

For Triton X-100 extraction, embryonic hearts were snap-frozen in liquid nitrogen and genotyped. Hearts were pooled, sonicated in lysis buffer (20 mM Hepes, pH 7.4, 150 mM NaCl, 0.5 mM CaCl<sub>2</sub>, and 1% Triton X-100), and centrifuged at 20,000 g for 15 min. Protein concentration was measured, and equal amounts of the Triton X-100 insoluble and soluble fractions were subjected to SDS-PAGE and transferred to nitrocellulose, and blots were probed several antibodies (see above) including  $\alpha$ -tubulin (Sigma-Aldrich) and pan-Erk (Cell Signaling, New England Biolabs, Inc.). For Western blotting, embryonic tissues were sonicated in ice-cold PBS and were boiled in SDS-containing loading buffer for 10 min at 95°C, and the homogenate was centrifuged. Equal amounts of total protein were subjected to SDS-PAGE, and blots were probed with the antibodies described above.

We thank Dr. P. Koch (Baylor College of Medicine, Houston, TX) for a gift of a murine mAb to Dsc2. We also thank Dr. Marta Rosario and Dr. Markus Morkel for helpful discussions, and Renate Franke for technical advice.

This research was supported by a KAP fellowship of the MDC to M. Behrend and a fellowship of the Deutsche Forschungsgemeinschaft (Graduiertenkolleg) to K.S. Grossmann.

Submitted: 18 February 2004

Accepted: 25 August 2004

## References

- Aberle, H., H. Schwartz, and R. Kemler. 1996. Cadherin-catenin complex: protein interactions and their implications for cadherin function. *J. Cell. Biochem.* 61:514–523.
- Alcalai, R., S. Metzger, S. Rosenheck, V. Meiner, and T. Chajek-Shaul. 2003. A recessive mutation in desmoplakin causes arrhythmogenic right ventricular dysplasia, skin disorder, and woolly hair. *J. Am. Coll. Cardiol.* 42:319–327.
- Armstrong, D.K.B., K.E. McKenna, P.E. Purkis, K.J. Green, R.A.J. Eady, I.M. Leigh, and A.E. Hughes. 1999. Haploinsufficiency of desmoplakin causes a striate subtype of palmoplantar keratoderma. *Hum. Mol. Genet.* 8:143–146.
- Behrens, J., J.P. von Kries, M. Kuhl, L. Bruhn, D. Wedlich, R. Grosschedl, and W. Birchmeier. 1996. Functional interaction of  $\beta$ -catenin with the transcription factor LEF-1. *Nature.* 382:638–642.
- Bienz, M., and H. Clevers. 2000. Linking colorectal cancer to Wnt signaling. *Cell.* 103:311–320.
- Bierkamp, C., K.J. McLaughlin, H. Schwarz, O. Huber, and R. Kemler. 1996. Embryonic heart and skin defects in mice lacking plakoglobin. *Dev. Biol.* 180:780–785.
- Boller, K., D. Vestweber, and R. Kemler. 1985. Cell-adhesion molecule uvomorulin is localized in the intermediate junctions of adult intestinal epithelial cells. *J. Cell Biol.* 100:327–332.
- Bonné, S., J. van Hengel, and F. van Roy. 1998. Chromosomal mapping of human *armadillo* genes belonging to the p120<sup>cas</sup>/plakophilin subfamily. *Genomics.* 51:452–454.
- Bonné, S., J. van Hengel, F. Nollet, P. Kools, and F. van Roy. 1999. Plakophilin-3, a novel Armadillo-like protein present in nuclei and desmosomes of epithelial cells. *J. Cell Sci.* 112:2265–2276.
- Bornslaeger, E.A., C.M. Corcoran, T.S. Stappenbeck, and K.J. Green. 1996. Breaking the connection: displacement of the desmosomal plaque protein desmoplakin from cell–cell interfaces disrupts anchorage of intermediate filament bundles and alters intercellular junction assembly. *J. Cell Biol.* 134:985–1001.
- Bornslaeger, E.A., L.M. Godsel, C.M. Corcoran, J.K. Park, M. Hatzfeld, A.P. Kowalczyk, and K.J. Green. 2001. Plakophilin 1 interferes with plakoglobin binding to desmoplakin, yet together with plakoglobin promotes clustering of desmosomal plaque complexes at cell-cell borders. *J. Cell Sci.* 114:727–738.
- Borrmann, C. 2000. Molekulare Charakterisierung der Adhärens-Zellverbindungen des Herzens: Identifizierung einer neuen Art, der Area composita. Ph.D. thesis. University of Heidelberg, Heidelberg, Germany. 119 pp.
- Chen, X.Y., S. Bonné, M. Hatzfeld, F. van Roy, and K.J. Green. 2002. Protein binding and functional characterization of plakophilin 2 - Evidence for its diverse roles in desmosomes and  $\beta$ -catenin signaling. *J. Biol. Chem.* 277:10512–10522.
- Cheng, X., and P.J. Koch. 2004. *In vivo* function of desmosomes. *J. Dermatol.* 31:171–187.
- Chidgey, M. 2002. Desmosomes and disease: an update. *Histol. Histopathol.* 17:1179–1192.
- Chitaev, N.A., R.E. Leube, R.B. Troyanovsky, L.G. Eshkind, W.W. Franke, and S.M. Troyanovsky. 1996. The binding of plakoglobin to desmosomal cadherins: patterns of binding sites and topogenic potential. *J. Cell Biol.* 133:359–369.
- Cowin, P., H.P. Kapprell, W.W. Franke, J. Tamkun, and R.O. Hynes. 1986. Plakoglobin: a protein common to different kinds of intercellular adhering junctions. *Cell.* 46:1063–1073.
- Eastman, Q., and R. Grosschedl. 1999. Regulation of LEF-1/TCF transcription factors by Wnt and other signals. *Curr. Opin. Cell Biol.* 11:233–240.
- Eshkind, L., Q. Tian, A. Schmidt, W.W. Franke, R. Windoffer, and R.E. Leube. 2002. Loss of desmoglein 2 suggests essential functions for early embryonic development and proliferation of embryonal stem cells. *Eur. J. Cell Biol.* 81:592–598.
- Franke, W.W., and R. Moll. 1987. Cytoskeletal components of lymphoid organs. I. Synthesis of cytokeratins 8 and 18 and desmin in subpopulations of extrafollicular reticulum cells of human lymph nodes, tonsils, and spleen. *Differentiation.* 36:145–163.
- Franke, W.W., R. Moll, D.L. Schiller, E. Schmid, J. Kartenbeck, and H. Mueller. 1982. Desmoplakins of epithelial and myocardial desmosomes are immunologically and biochemically related. *Differentiation.* 23:115–127.
- Galliciano, G.I., P. Kouklis, C. Bauer, M. Yin, V. Vasioukhin, L. Degenstein, and E. Fuchs. 1998. Desmoplakin is required early in development for assembly of desmosomes and cytoskeletal linkage. *J. Cell Biol.* 143:2009–2022.
- Galliciano, G.I., C. Bauer, and E. Fuchs. 2001. Rescuing desmoplakin function in extra-embryonic ectoderm reveals the importance of this protein in embryonic heart, neuroepithelium, skin and vasculature. *Development.* 128:929–941.
- Gerull, B., M. Gramlich, J. Atherton, M. McNabb, K. Trombitas, S. Sasse-Klaassen, J.G. Seidman, C. Seidman, H. Granzier, S. Labeit, et al. 2002. Mutations of TTN, encoding the giant muscle filament titin, cause familial dilated cardiomyopathy. *Nat. Genet.* 30:201–204.
- Green, K.J., and C.A. Gaudry. 2000. Are desmosomes more than tethers for intermediate filaments? *Nat. Rev. Mol. Cell Biol.* 1:208–216.
- Hamada, T., A.P. South, Y. Mitsuhashi, T. Kinebuchi, O. Bleck, G.H.S. Ashton, Y. Hozumi, T. Suzuki, T. Hashimoto, R.A.J. Eady, and J.A. McGrath. 2002. Genotype-phenotype correlation in skin fragility-ectodermal dysplasia syndrome resulting from mutations in plakophilin 1. *Exp. Dermatol.* 11:107–114.
- Hatzfeld, M. 1999. The armadillo family of structural proteins. *Int. Rev. Cytol.* 186:179–224.
- Hatzfeld, M., and C. Nachtsheim. 1996. Cloning and characterization of a new *armadillo* family member, p0071, associated with the junctional plaque: Evidence for a subfamily of closely related proteins. *J. Cell Sci.* 109:2767–2778.
- Hatzfeld, M., G.I. Kristjansson, U. Plessmann, and K. Weber. 1994. Band 6 protein, a major constituent of desmosomes from stratified epithelia, is a novel member of the *armadillo* multigene family. *J. Cell Sci.* 107:2259–2270.
- Hatzfeld, M., C. Haffner, K. Schulze, and U. Vinzens. 2000. The function of plakophilin 1 in desmosome assembly and actin filament organization. *J. Cell Biol.* 149:209–222.
- Hecht, A., C.M. Litterst, O. Huber, and R. Kemler. 1999. Functional characterization of multiple transactivating elements in  $\beta$ -catenin, some of which interact with the TATA-binding protein in vitro. *J. Biol. Chem.* 274:18017–18025.
- Heid, H.W., A. Schmidt, R. Zimbelmann, S. Schäfer, S. Winter-Simanowski, S. Stumpp, M. Keith, U. Figge, M. Schnölzer, and W.W. Franke. 1994. Cell type-specific desmosomal plaque proteins of the plakoglobin family: plakophilin 1 (band 6 protein). *Differentiation.* 58:113–131.
- Hofmann, I., C. Mertens, M. Brettel, V. Nimrich, M. Schnölzer, and H. Herrmann. 2000. Interaction of plakophilins with desmoplakin and intermediate filament proteins: an in vitro analysis. *J. Cell Sci.* 113:2471–2483.
- Huelsken, J., R. Vogel, V. Brinkmann, B. Erdmann, C. Birchmeier, and W. Birchmeier. 2000. Requirement for  $\beta$ -catenin in anterior-posterior axis formation in mice. *J. Cell Biol.* 148:567–578.
- Hülsken, J., W. Birchmeier, and J. Behrens. 1994. E-Cadherin and Apc compete for the interaction with  $\beta$ -catenin and the cytoskeleton. *J. Cell Biol.* 127:2061–2069.
- Isac, C.M., P. Ruiz, B. Pfitzmaier, H. Haase, W. Birchmeier, and I. Morano. 1999. Plakoglobin is essential for myocardial compliance but dispensable for myofibril insertion into adherens junctions. *J. Cell. Biochem.* 72:8–15.
- Janssens, B., S. Goossens, K. Staes, B. Gilbert, J. van Hengel, C. Colpaert, E.

- Bruyneel, M. Mareel, and F. van Roy. 2001.  $\alpha$ T-Catenin: a novel tissue-specific  $\beta$ -catenin-binding protein mediating strong cell-cell adhesion. *J. Cell Sci.* 114:3177–3188.
- Kapprell, H.P., K. Owaribe, and W.W. Franke. 1988. Identification of a basic protein of  $M_r$  75,000 as an accessory desmosomal plaque protein in stratified and complex epithelia. *J. Cell Biol.* 106:1679–1691.
- Kartenbeck, J., W.W. Franke, J.G. Moser, and U. Stoffels. 1983. Specific attachment of desmin filaments to desmosomal plaques in cardiac myocytes. *EMBO J.* 2:735–742.
- Kartenbeck, J., K. Schwechheimer, R. Moll, and W.W. Franke. 1984. Attachment of vimentin filaments to desmosomal plaques in human meningioma cells and arachnoidal tissue. *J. Cell Biol.* 98:1072–1081.
- Kaufman, M.H., and J.B.L. Bard. 1999. *The Anatomical Basis of Mouse Development*. Academic Press, London. 291 pp.
- Koeser, J., S.M. Troyanovsky, C. Grund, and W.W. Franke. 2003. De novo formation of desmosomes in cultured cells upon transfection of genes encoding specific desmosomal components. *Exp. Cell Res.* 285:114–130.
- Kouklis, P.D., E. Hutton, and E. Fuchs. 1994. Making a connection: direct binding between keratin intermediate filaments and desmosomal proteins. *J. Cell Biol.* 127:1049–1060.
- Kowalczyk, A.P., P. Navarro, E. Dejana, E.A. Bornslaeger, K.J. Green, D.S. Kopp, and J.E. Borgwardt. 1998. VE-cadherin and desmoplakin are assembled into dermal microvascular endothelial intercellular junctions: a pivotal role for plakoglobin in the recruitment of desmoplakin to intercellular junctions. *J. Cell Sci.* 111:3045–3057.
- Kowalczyk, A.P., M. Hatzfeld, E.A. Bornslaeger, D.S. Kopp, J.E. Borgwardt, C.M. Corcoran, A. Settler, and K.J. Green. 1999. The head domain of plakophilin-1 binds to desmoplakin and enhances its recruitment to desmosomes. Implications for cutaneous disease. *J. Biol. Chem.* 274:18145–18148.
- Kuruc, N., and W.W. Franke. 1988. Transient coexpression of desmin and cytokeratins 8 and 18 in developing myocardial cells of some vertebrate species. *Differentiation*. 38:177–193.
- Kurzen, H., I. Moll, R. Moll, S. Schäfer, E. Simics, M. Amagai, M.J. Wheelock, and W.W. Franke. 1998. Compositionally different desmosomes in the various compartments of the human hair follicle. *Differentiation*. 63:295–304.
- Langbein, L., C. Grund, C. Kuhn, S. Praetzel, J. Kartenbeck, J.M. Brandner, I. Moll, and W.W. Franke. 2002. Tight junctions and compositionally related junctional structures in mammalian stratified epithelia and cell cultures derived therefrom. *Eur. J. Cell Biol.* 81:419–435.
- McCrea, P.D., C.W. Turck, and B. Gumbiner. 1991. A homolog of the armadillo protein in *Drosophila* (plakoglobin) associated with E-cadherin. *Science*. 254:1359–1361.
- McGrath, J.A., J.R. McMillan, C.S. Shemanko, S.K. Runswick, I.M. Leight, E.B. Lane, D.R. Garrod, and R.A.J. Eady. 1997. Mutations in the plakophilin 1 gene result in ectodermal dysplasia skin fragility syndrome. *Nat. Genet.* 17:240–244.
- McKoy, G., N. Protonotarios, A. Crosby, A. Tsatsopoulou, A. Anastasakis, A. Coonar, M. Norman, C. Baboonian, S. Jeffery, and W.J. McKenna. 2000. Identification of a deletion in plakoglobin in arrhythmic right ventricular cardiomyopathy with palmoplantar keratoderma and woolly hair (Naxos disease). *Lancet*. 355:2119–2124.
- Mertens, C., C. Kuhn, and W.W. Franke. 1996. Plakophilins 2a and 2b: constitutive proteins of dual location in the karyoplasm and the desmosomal plaque. *J. Cell Biol.* 135:1009–1025.
- Mertens, C., C. Kuhn, R. Moll, I. Schwetlick, and W.W. Franke. 1999. Desmosomal plakophilin 2 as a differentiation marker in normal and malignant tissues. *Differentiation*. 64:277–290.
- Mertens, C., I. Hofmann, Z.X. Wang, M. Teichmann, S.S. Chong, M. Schnölzer, and W.W. Franke. 2001. Nuclear particles containing RNA polymerase III complexes associated with the junctional plaque protein plakophilin 2. *Proc. Natl. Acad. Sci. USA*. 98:7795–7800.
- Milner, D.J., G. Weitzer, D. Tran, A. Bradley, and Y. Capetanaki. 1996. Disruption of muscle architecture and myocardial degeneration in mice lacking desmin. *J. Cell Biol.* 134:1255–1270.
- Moorman, A.F.M., and W.H. Lamers. 1999. Development of the conduction system of the vertebrate heart. In *Heart Development*. R.P. Harvey and N. Rosenthal, editors. Academic Press, San Diego. 195–207.
- Nagafuchi, A., and M. Takeichi. 1989. Transmembrane control of cadherin-mediated cell-adhesion: a 94 kDa protein functionally associated with a specific region of the cytoplasmic domain of E-cadherin. *Cell Regul.* 1:37–44.
- Narin, N., M. Akcakus, T. Gunes, A. Celiker, A. Baykan, K. Uzum, and A. Ferahbas. 2003. Arrhythmic right ventricular cardiomyopathy (Naxos disease): Report of a Turkish boy. *Pacing Clin. Electrophysiol.* 26:2326–2329.
- Norgett, E.E., S.J. Hatsell, L. Carvajal-Huerta, J.C.R. Cabezas, J. Common, P.E. Purkis, N. Whittock, I.M. Leigh, H.P. Stevens, and D.P. Kelsell. 2000. Recessive mutation in desmoplakin disrupts desmoplakin-intermediate filament interactions and causes dilated cardiomyopathy, woolly hair and keratoderma. *Hum. Mol. Genet.* 9:2761–2766.
- North, A.J., W.G. Bardsley, J. Hyam, E.A. Bornslaeger, H.C. Cordingley, B. Trinnaman, M. Hatzfeld, K.J. Green, A.I. Magee, and D.R. Garrod. 1999. Molecular map of the desmosomal plaque. *J. Cell Sci.* 112:4325–4336.
- Nuber, U.A., S. Schäfer, S. Stehr, H.-R. Rackwitz, and W.W. Franke. 1996. Patterns of desmocollin synthesis in human epithelia: immunolocalization of desmocollins 1 and 3 in special epithelia and in cultured cells. *Eur. J. Cell Biol.* 71:1–13.
- Ozawa, M., H. Baribault, and R. Kemler. 1989. The cytoplasmic domain of the cell adhesion molecule uvomorulin associates with three independent proteins structurally related in different species. *EMBO J.* 8:1711–1717.
- Pasdar, M., and W.J. Nelson. 1989. Regulation of desmosome assembly in epithelial cells: kinetics of synthesis, transport, and stabilization of desmoglein 1, a major protein of the membrane core domain. *J. Cell Biol.* 109:163–177.
- Pasdar, M., K.A. Krzeminski, and W.J. Nelson. 1991. Regulation of desmosome assembly in MDCK epithelial cells: coordination of membrane core and cytoplasmic plaque domain assembly at the plasma membrane. *J. Cell Biol.* 113:645–655.
- Peifer, M., and E. Wieschaus. 1990. The segment polarity gene armadillo encodes a functionally modular protein that is the *Drosophila* homolog of human plakoglobin. *Cell*. 63:1167–1178.
- Protonotarios, N., A. Tsatsopoulou, A. Anastasakis, E. Sevdalis, G. McKoy, K. Stratos, K. Gatzoulis, K. Tentolouris, C. Spiliopoulou, D. Panagiotakos, et al. 2001. Genotype-phenotype assessment in autosomal recessive arrhythmic right ventricular cardiomyopathy (Naxos disease) caused by a deletion in plakoglobin. *J. Am. Coll. Cardiol.* 38:1477–1484.
- Radice, G.L., H. Rayburn, H. Matsunami, K.A. Knudsen, M. Takeichi, and R.O. Hynes. 1997. Developmental defects in mouse embryos lacking N-cadherin. *Dev. Biol.* 181:64–78.
- Rampazzo, A., A. Nava, S. Malacrida, G. Beffagna, B. Bauce, V. Rossi, R. Zimbellio, B. Simonati, C. Basso, G. Thiene, et al. 2002. Mutation in human desmoplakin domain binding to plakoglobin causes a dominant form of arrhythmic right ventricular cardiomyopathy. *Am. J. Hum. Genet.* 71:1200–1206.
- Ruiz, P., V. Brinkmann, B. Ledermann, M. Behrend, C. Grund, C. Thalhammer, F. Vogel, C. Birchmeier, U. Gunther, W.W. Franke, and W. Birchmeier. 1996. Targeted mutation of plakoglobin in mice reveals essential functions of desmosomes in the embryonic heart. *J. Cell Biol.* 135:215–225.
- Schäfer, S., S. Stumpp, and W.W. Franke. 1996. Immunological identification and characterization of the desmosomal cadherin Dsg2 in coupled and uncoupled epithelial cells and in human tissues. *Differentiation*. 60:99–108.
- Schmelz, M., and W.W. Franke. 1993. Complexus adhaerentes, a new group of desmoplakin-containing junctions in endothelial cells: the syndesmos connecting retothelial cells of lymph-nodes. *Eur. J. Cell Biol.* 61:274–289.
- Schmelz, M., R. Duden, P. Cowin, and W.W. Franke. 1986. A constitutive transmembrane glycoprotein of  $M_r$  165,000 (desmoglein) in epidermal and non-epidermal desmosomes: I. Biochemical identification of the polypeptide. *Eur. J. Cell Biol.* 42:177–183.
- Schmelz, M., R. Moll, C. Kuhn, and W.W. Franke. 1994. *Complexus adhaerentes*, a new group of desmoplakin-containing junctions in endothelial cells: II. Different types of lymphatic vessels. *Differentiation*. 57:97–117.
- Schmidt, A., H.W. Heid, S. Schäfer, U.A. Nuber, R. Zimbelmann, R., and W.W. Franke. 1994. Desmosomes and cytoskeletal architecture in epithelial differentiation: cell type-specific plaque components and intermediate filament anchorage. *Eur. J. Cell Biol.* 65:229–245.
- Schmidt, A., L. Langbein, M. Rode, S. Prätzel, R. Zimbelmann, and W.W. Franke. 1997. Plakophilins 1a and 1b: widespread nuclear proteins recruited in specific epithelial cells as desmosomal plaque components. *Cell Tissue Res.* 290:481–499.
- Schmidt, A., L. Langbein, S. Prätzel, M. Rode, H.R. Rackwitz, and W.W. Franke. 1999. Plakophilin 3—a novel cell-type-specific desmosomal plaque protein. *Differentiation*. 64:291–306.
- Sedmera, D., T. Pexieder, M. Vuillemin, R.P. Thompson, and R.H. Anderson. 2000. Developmental patterning of the myocardium. *Anat. Rec.* 258:319–337.
- Smith, E.A., and E. Fuchs. 1998. Defining the interactions between intermediate filaments and desmosomes. *J. Cell Biol.* 141:1229–1241.
- Sprecher, E., V. Molho-Pessach, A. Ingber, E. Sagi, M. Indelman, and R. Bergman. 2004. Homozygous splice site mutations in PKP1 result in loss of epidermal plakophilin 1 expression and underlie ectodermal dysplasia/skin fragility syndrome in two consanguineous families. *J. Invest. Dermatol.* 122:647–651.
- Stappenbeck, T.S., and K.J. Green. 1992. The desmoplakin carboxyl terminus coaligns with and specifically disrupts intermediate filament networks when expressed in cultured-cells. *J. Cell Biol.* 116:1197–1209.

- Stappenbeck, T.S., E.A. Bornslaeger, C.M. Corcoran, H.H. Luu, M.L.A. Virata, and K.J. Green. 1993. Functional-analysis of desmoplakin domains: specification of the interaction with keratin versus vimentin intermediate filament networks. *J. Cell Biol.* 123:691–705.
- Takeichi, M. 1995. Morphogenetic roles of classic cadherins. *Curr. Opin. Cell Biol.* 7:619–627.
- Thierfelder, L., H. Watkins, C. Macrae, R. Lamas, W. McKenna, H.P. Vosberg, J.G. Seidman, and C.E. Seidman. 1994. Alpha-tropomyosin and cardiac troponin-T mutations cause familial hypertrophic cardiomyopathy: a disease of the sarcomere. *Cell.* 77:701–712.
- Valiron, O., V. Chevrier, Y. Usson, F. Breviario, D. Job, and E. Dejana. 1996. Desmoplakin expression and organization at human umbilical vein endothelial cell-to-cell junctions. *J. Cell Sci.* 109:2141–2149.
- van der Loop, F.T.L., G. Schaart, H. Langmann, F.C.S. Ramaekers, and C. Viebahn. 1995. Rearrangement of intercellular junctions and cytoskeletal proteins during rabbit myocardium development. *Eur. J. Cell Biol.* 68: 62–69.
- Vasioukhin, V., E. Bowers, C. Bauer, L. Degenstein, and E. Fuchs. 2001. Desmoplakin is essential in epidermal sheet formation. *Nat. Cell Biol.* 3:1076–1085.
- Whitlock, N.V., M. Haftek, N. Angoulvant, F. Wolf, H. Perrot, R.A. Eady, and J.A. McGrath. 2000. Genomic amplification of the human plakophilin 1 gene and detection of a new mutation in ectodermal dysplasia/skin fragility syndrome. *J. Invest. Dermatol.* 115:368–374.
- Zhou, X., A. Stuart, L.E. Dettin, G. Rodriguez, B. Hoel, and G.I. Gallicano. 2004. Desmoplakin is required for microvascular tube formation in culture. *J. Cell Sci.* 117:3129–3140.