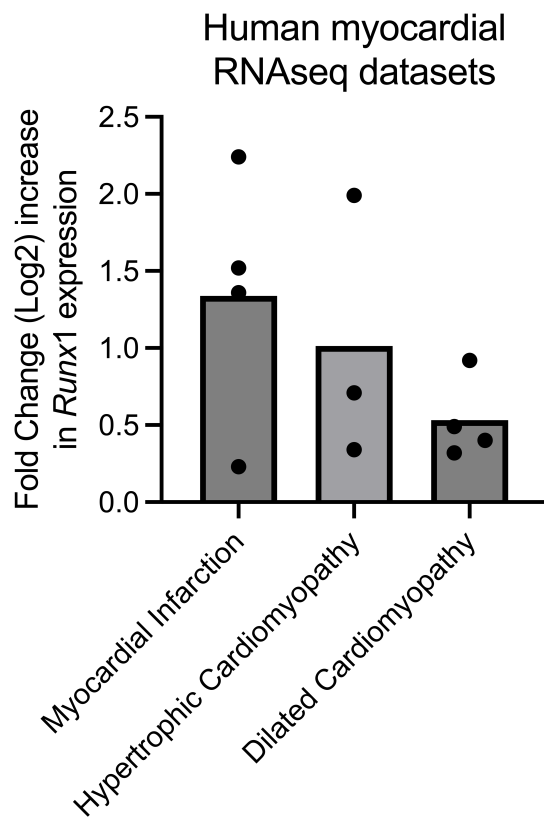
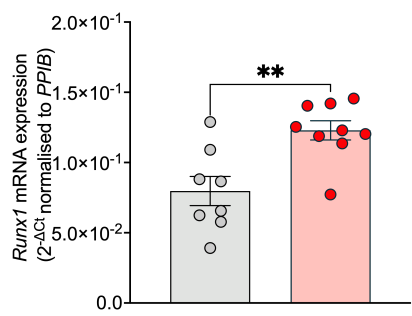


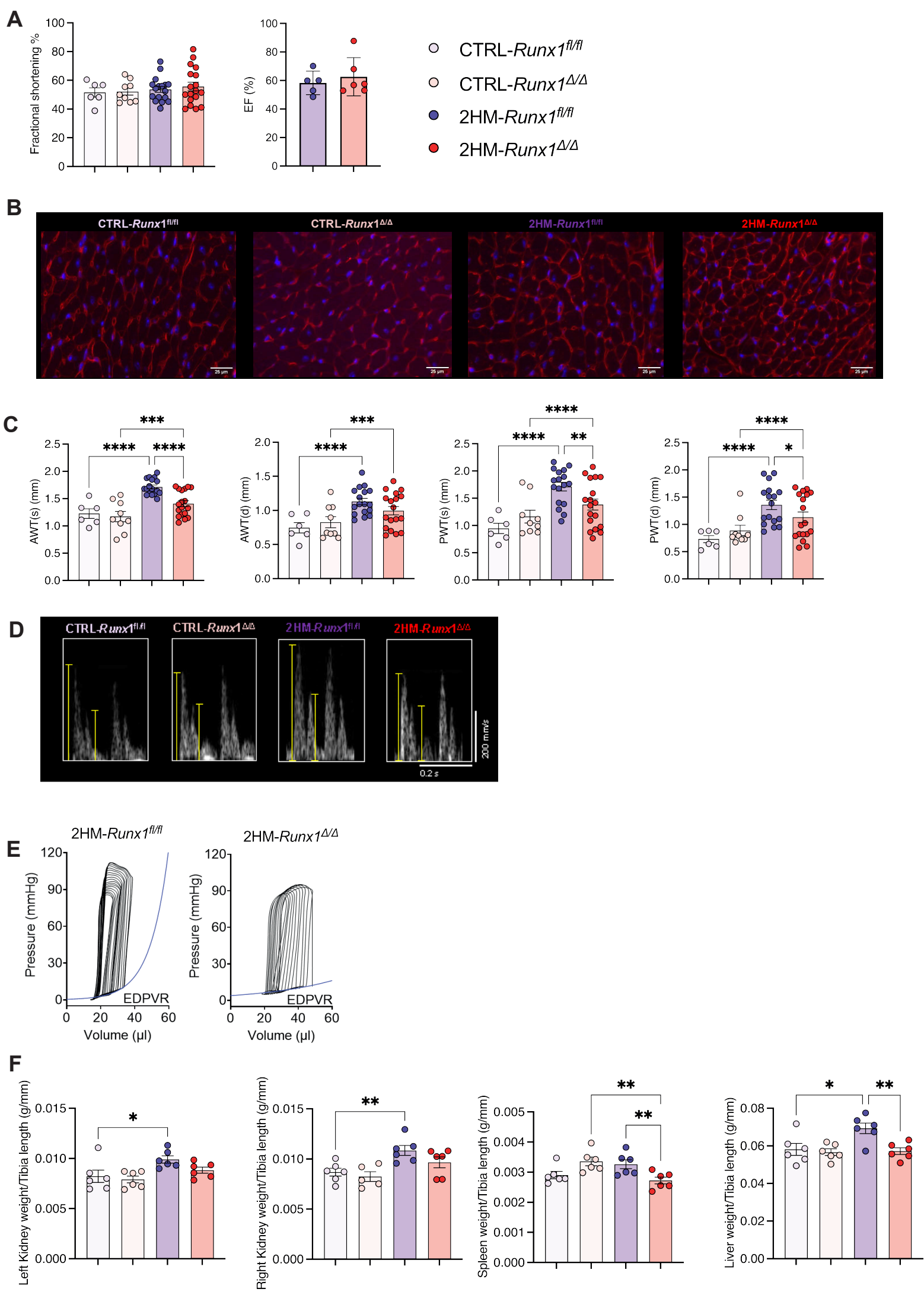
SUPPLEMENTAL FIGURE 1



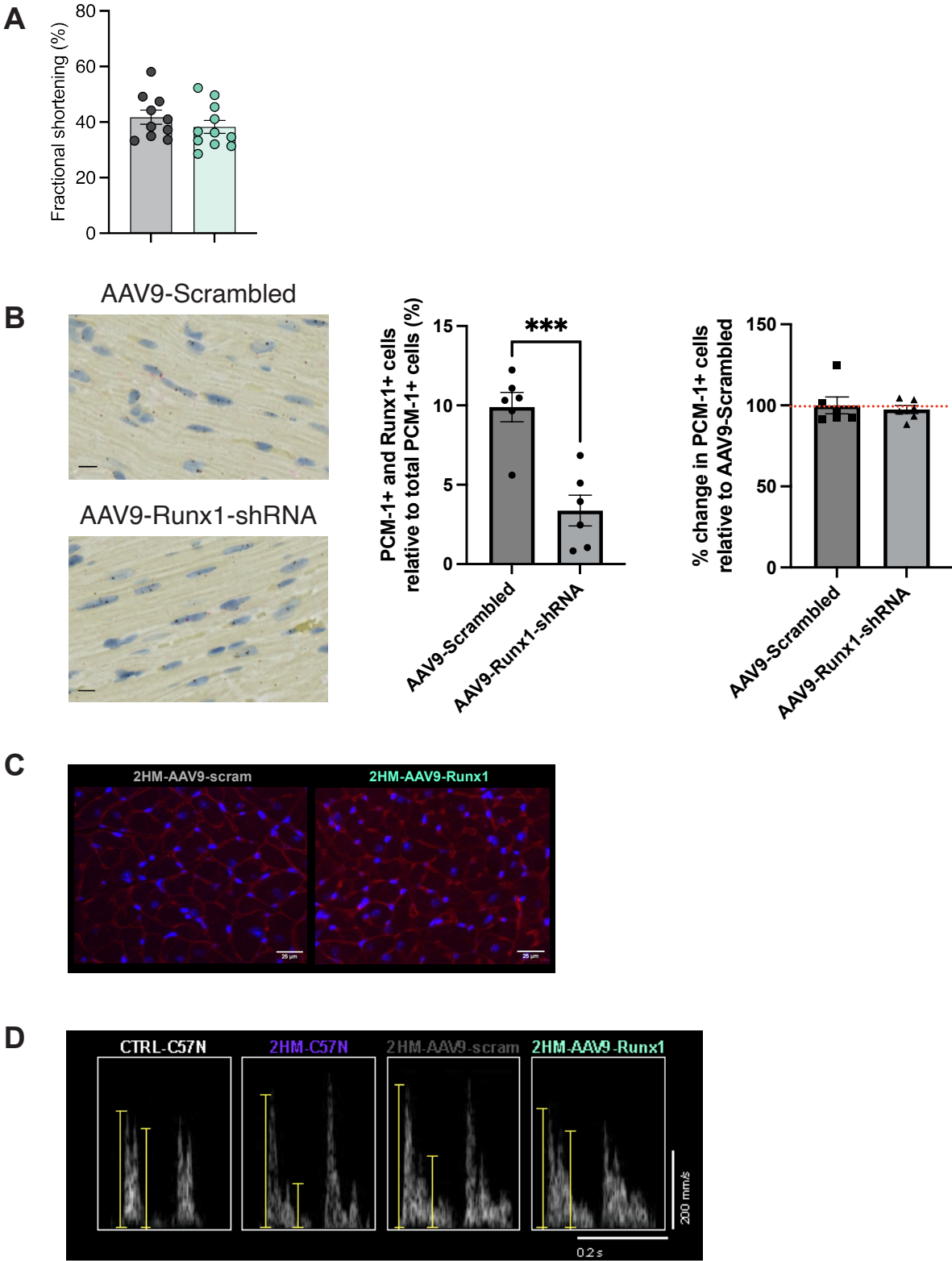
SUPPLEMENTAL FIGURE 2



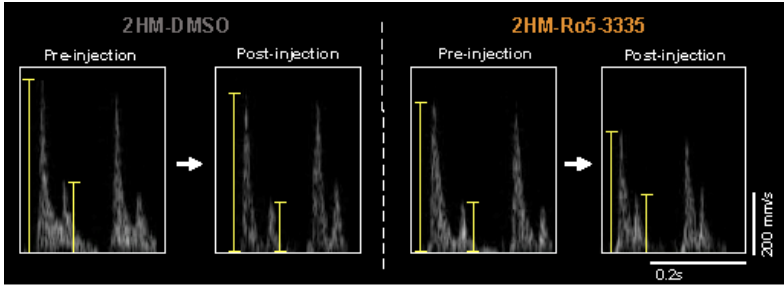
SUPPLEMENTAL FIGURE 3



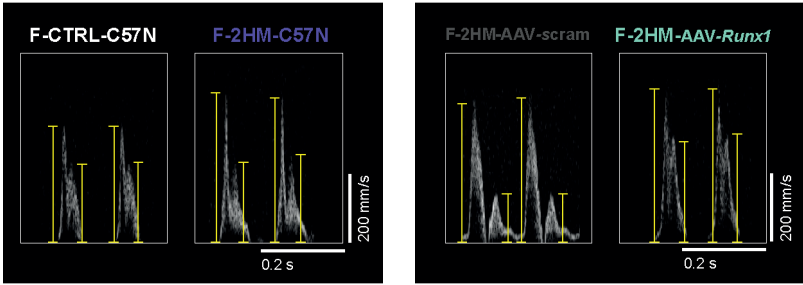
SUPPLEMENTAL FIGURE 4



SUPPLEMENTAL FIGURE 5



SUPPLEMENTAL FIGURE 6



SUPPLEMENTAL TABLE 1

ComparisonID	GeneName	ComparisonContrast	Pvalue	Adjusted Pvalue	Fold Change [Log2]	Fold change (UP)	Case.DiseaseState
Myocardial Infarction							
GSE120852.GPL16791.DESeq2R.test3	RUNX1	ExperimentGroup => right ventricular tissue from ICM, biventricular heart failure vs right v	0.0005	0.0097	2.24	4.74	heart failure;myocardial ischemia
GSE116250.GPL16791.DESeq2R.test7	RUNX1	Gender:DiseaseState => male -> myocardial ischemia vs disease control	0.0019	0.011	1.52	2.88	myocardial ischemia
GSE116250.GPL16791.DESeq2R.test2	RUNX1	DiseaseState => myocardial ischemia vs disease control	0.0014	0.0072	1.36	2.57	myocardial ischemia
GSE1145.GPL570.test4	RUNX1	DiseaseState => myocardial ischemia vs normal control	0.0009	0.0063	0.23	1.18	myocardial ischemia
Hypertrophic Cardiomyopathy							
GSE89714.GPL11154.DESeq2R.test1	RUNX1	DiseaseState => hypertrophic cardiomyopathy vs normal control	1.41E-08	8.01E-07	1.99	3.98	hypertrophic cardiomyopathy
GSE141910.GPL16791.DESeq2R.test2	RUNX1	DiseaseGroup => hypertrophic cardiomyopathy vs non-failing donor	0.0006	0.0033	0.71	1.64	hypertrophic cardiomyopathy
GSE1145.GPL570.test2	RUNX1	DiseaseState => hypertrophic cardiomyopathy vs normal control	0.0016	0.0152	0.34	1.27	hypertrophic cardiomyopathy
Dilated Cardiomyopathy							
GSE35108.GPL6244.test4	RUNX1	Transfection:DiseaseState => GFP -> dilated cardiomyopathy vs normal control	0.0002	0.0021	0.92	1.89	dilated cardiomyopathy
GSE35108.GPL6244.test3	RUNX1	Transfection:DiseaseState => ATP2A2 -> dilated cardiomyopathy vs normal control	0.0022	0.0095	0.49	1.41	dilated cardiomyopathy
GSE141910.GPL16791.DESeq2R.test1	RUNX1	DiseaseGroup => dilated cardiomyopathy;heart failure vs non-failing donor	0.0004	0.0015	0.40	1.32	dilated cardiomyopathy;heart failure
GSE155495.GPL21697.DESeq2R.test1	RUNX1	DiseaseState => dilated cardiomyopathy;heart failure vs disease control	0.0121	0.0436	0.32	1.25	dilated cardiomyopathy;heart failure

SUPPLEMENTAL TABLE 2

© 2000-2024 QIAGEN. All rights reserved.							
Expr False D	Expr Log	Expr Inte	ID	Symbol	Entrez Gene	Location	Type(s)
0.000021	-1.709	4.215	ENSMUSG00000036103	COLEC12	collectin subfa	Plasma Memk	transmembrane receptor
0.000798	-1.956	5.259	ENSMUSG00000039852	RERE	arginine-gluta	Nucleus	transcription regulator
0.00168	-0.962	4.511	ENSMUSG00000020412	ASCC2	activating sig	Nucleus	other
0.00237	-1.554	4.988	ENSMUSG00000028995	HYCC1	hyccin PI4KA	Cytoplasm	other
0.00237	0.914	6.84	ENSMUSG00000058135	GSTM5	glutathione S	Cytoplasm	enzyme
0.00791	1.174	5.201	ENSMUSG00000039943	PLCB4	phospholipas	Cytoplasm	enzyme
0.0121	-1.289	-0.253	ENSMUSG00000086233	Gm11816		Other	other
0.0141	-0.416	5.796	ENSMUSG00000025369	SMARCC2	SWI/SNF rela	Nucleus	transcription regulator
0.0141	-0.817	1.858	ENSMUSG00000041961	ZNRF3	zinc and ring	Plasma Memk	enzyme
0.0259	0.744	3.852	ENSMUSG00000027692	TNIK	TRAF2 and N	Plasma Memk	kinase
0.0259	0.788	2.593	ENSMUSG00000024563	SMAD2	SMAD family	Nucleus	transcription regulator
0.0266	-2.594	1.017	ENSMUSG00000098022	ZFP82	ZFP82 zinc fi	Nucleus	transcription regulator
0.0274	-1.197	7.892	ENSMUSG00000025809	ITGB1	integrin subu	Plasma Memk	transmembrane receptor
0.0303	-2.182	2.224	ENSMUSG00000029863	CASP2	caspase 2	Cytoplasm	peptidase
0.0303	-0.743	1.824	ENSMUSG00000040747	CD53	CD53 molecu	Plasma Memk	other
0.0303	1.474	3.733	ENSMUSG00000030532	HDDC3	HD domain co	Other	other
0.0303	1.285	4.582	ENSMUSG00000022257	LAPTM4B	lysosomal pro	Cytoplasm	other
0.0303	-1.197	5.872	ENSMUSG00000035545	LENG8	leukocyte rec	Other	other
0.0303	1.123	4.33	ENSMUSG00000021518	PTDSS1	phosphatidyls	Cytoplasm	enzyme
0.0303	1.512	6.343	ENSMUSG00000039844	RAPGEF1	Rap guanine	Cytoplasm	other
0.0303	-0.866	1.482	ENSMUSG00000103651	Gm37206		Other	other
0.0303	-0.914	4.396	ENSMUSG00000053931	CNN3	calponin 3	Cytoplasm	other
0.0303	-0.602	2.74	ENSMUSG00000031239	ITM2A	integral memk	Plasma Memk	other
0.0303	0.464	4.206	ENSMUSG00000026047	POGLUT2	protein O-gluc	Cytoplasm	enzyme
0.0303	1.616	5.365	ENSMUSG00000030861	ACADSB	acyl-CoA deh	Cytoplasm	enzyme
0.031	-1.155	4.395	ENSMUSG00000032724	ABTB2	ankyrin repea	Nucleus	other
0.031	-1.41	3.626	ENSMUSG00000059439	BCAS3	BCAS3 micro	Nucleus	other
0.031	-1.329	2.405	ENSMUSG00000008090	FGFRL1	fibroblast gro	Plasma Memk	transmembrane receptor
0.031	1.648	3.078	ENSMUSG00000037692	AHDC1	AT-hook DNA	Nucleus	transcription regulator
0.031	0.843	4.987	ENSMUSG00000029647	PAN3	poly(A) specif	Cytoplasm	enzyme
0.0362	-0.417	3.396	ENSMUSG00000081272	Ap2m1-ps	adaptor-relate	Other	other
0.0391	-1.994	1.382	ENSMUSG00000106296	4632404M16	RIKEN cDNA	Other	other
0.0391	-0.944	5.655	ENSMUSG00000053907	MAT2A	methionine ac	Cytoplasm	enzyme