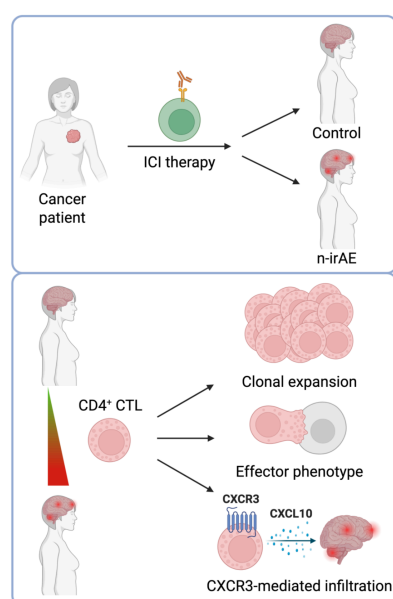


Clonally expanded effector CD4⁺ cytotoxic T lymphocytes are associated with severe neurological adverse events after immune checkpoint inhibitor therapy

Ambre Manon Giguelay, Patrick Maschmeyer, Leonie Müller-Jensen, Christian Schinke, Smilla K. Maierhof, Natasha Nambiar, Manpreet Meyer, Petra Huehnchen, Wolfgang Boehmerle, Matthias Endres, Samuel Knauss, Leif Si-Hun Ludwig.



- Terminally differentiated CD4⁺ CTLs are present in the blood of cancer patients with ICI-induced n-irAEs.
- The top clonally expanded n-irAE CD4⁺ CTLs display an activated effector phenotype.
- *CXCR3* expression equips these cells to infiltrate inflamed nervous and muscle tissues.