

Appendix for:

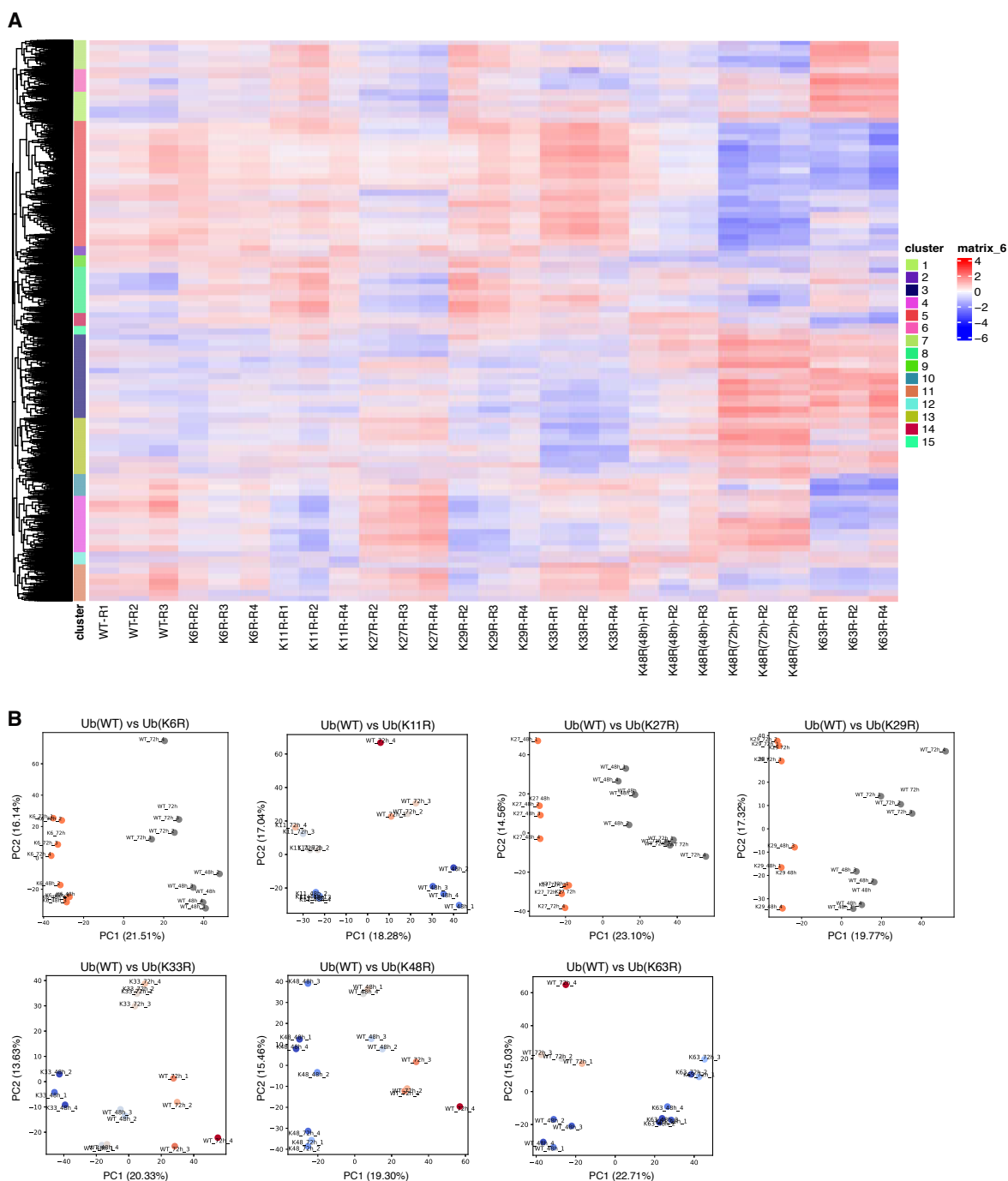
Functional landscape of ubiquitin linkages couples K29-linked ubiquitylation to epigenome integrity

Javier Arroyo-Gomez¹, Matthew J. Murray^{1,2}, Claire Guérillon^{1,2}, Juanjuan Wang¹, Ekaterina Isaakova³, Nazaret Reverón-Gómez^{1,2}, Mikaela Koutrouli¹, Aldwin Suryo Rahmanto³, Katrine Mitrofanov¹, Andreas Ingham¹, Sofie Schovsbo¹, Katrine Weischenfeldt^{1,2}, Fabian Coscia^{1,4}, Dimitris Typas¹, Moritz Völker-Albert⁵, Victor Solis⁵, Lars Juhl Jensen¹, Anja Groth^{1,2}, Andreas Mund¹, Petra Beli³, Robert F Shearer¹, and Niels Mailand^{1,2}

¹Novo Nordisk Foundation Center for Protein Research, University of Copenhagen, 2200 Copenhagen, Denmark; ²Danish Cancer Institute, Danish Cancer Society, Copenhagen, 2100 Copenhagen, Denmark; ³Institute of Molecular Biology, 55218 Mainz, Germany; ⁴Max Delbrück Center for Molecular Medicine, Berlin, Germany; ⁵EpiQMAx GmbH, Planegg, Germany

Table of contents

Appendix Figure S1	Page 3
--------------------	--------



Appendix Figure S1.
Extended data related to Figure 2

A. Heatmap comparison of whole proteome analyses of individual replicates from indicated Ub replacement cell lines treated with DOX for 72 h (48 or 72 h in the case of Ub(K48R) cells). See Table EV2 for full results.

B. Principal component analysis clustering of samples analyzed by MS after enrichment of HA-Ub conjugates from Ub replacement cell lines under denaturing conditions (Figure 2A-H).