

S1A

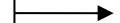
A

Patient screening:

- brain metastasis registry
- patients undergoing VP shunt or reservoir placement
- Tumorboard server (search tags „Lumbalpunktion“, „Meningeosis“, „LP“, „lepto“)

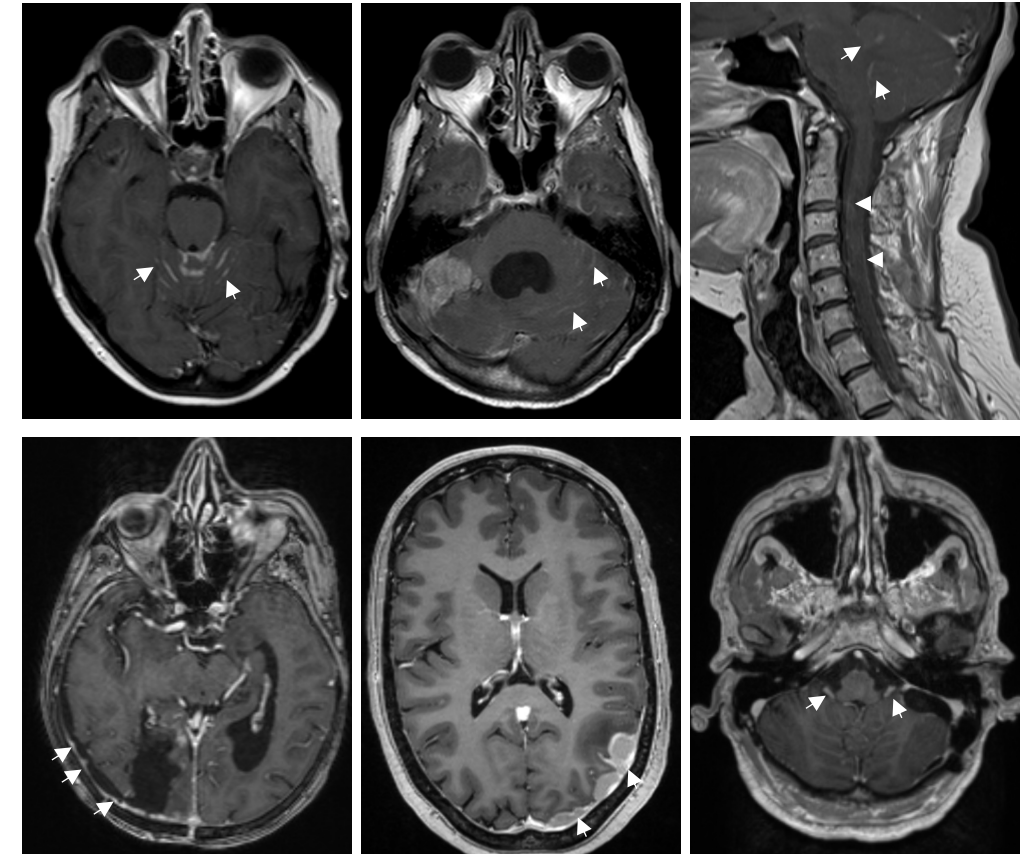
**Patients with suspected leptomeningeal metastasis (LMD)****Excluded patients with LMD (n=30):**

- Midline glioma (n=2), glioblastoma (n=3), ganglioglioma (n=1), anaplastic Xanthoastrocytoma (n=1)
- Medulloblastoma (n=3)
- Ependymoma (n=1), pineoblastoma (=1), melanomcytoma (n=1)
- Embryonal rhabdomyosarcoma (n=1)
- DLBCL (n=6), PCNSTCL (n=1), CML (n=2), CLL (n=2), multiple myeloma (n=2)
- Merkel cell carcinoma (n=2)
- Hemangioblastoma (n=1)

**Patients with suspected leptomeningeal metastasis (LMD) due to a solid malignancy****Patients with evidence of LMD on MRI +/- CSF studies (n=188)**

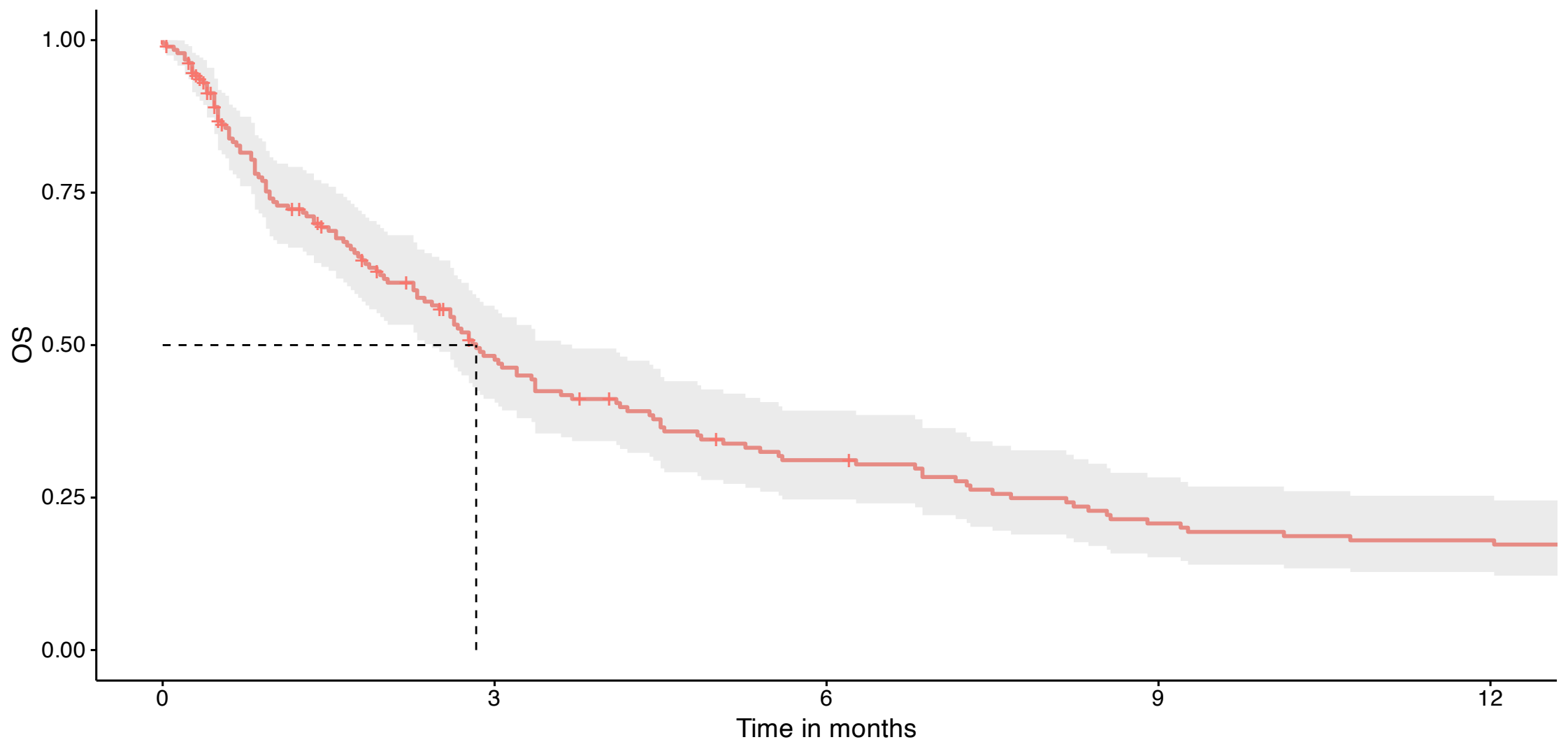
S1B

B

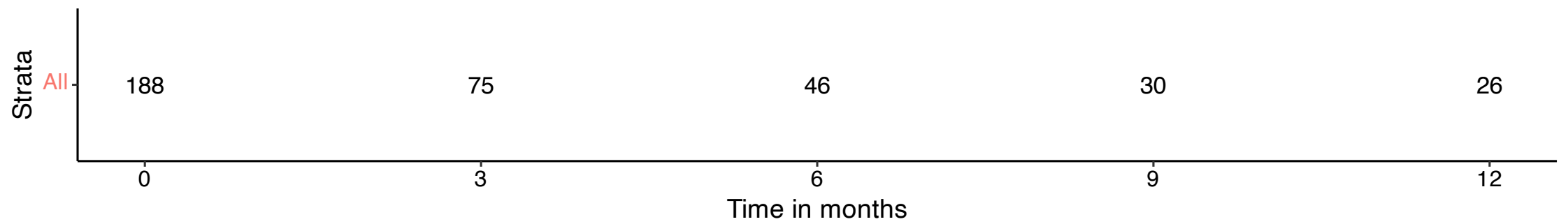


S2A





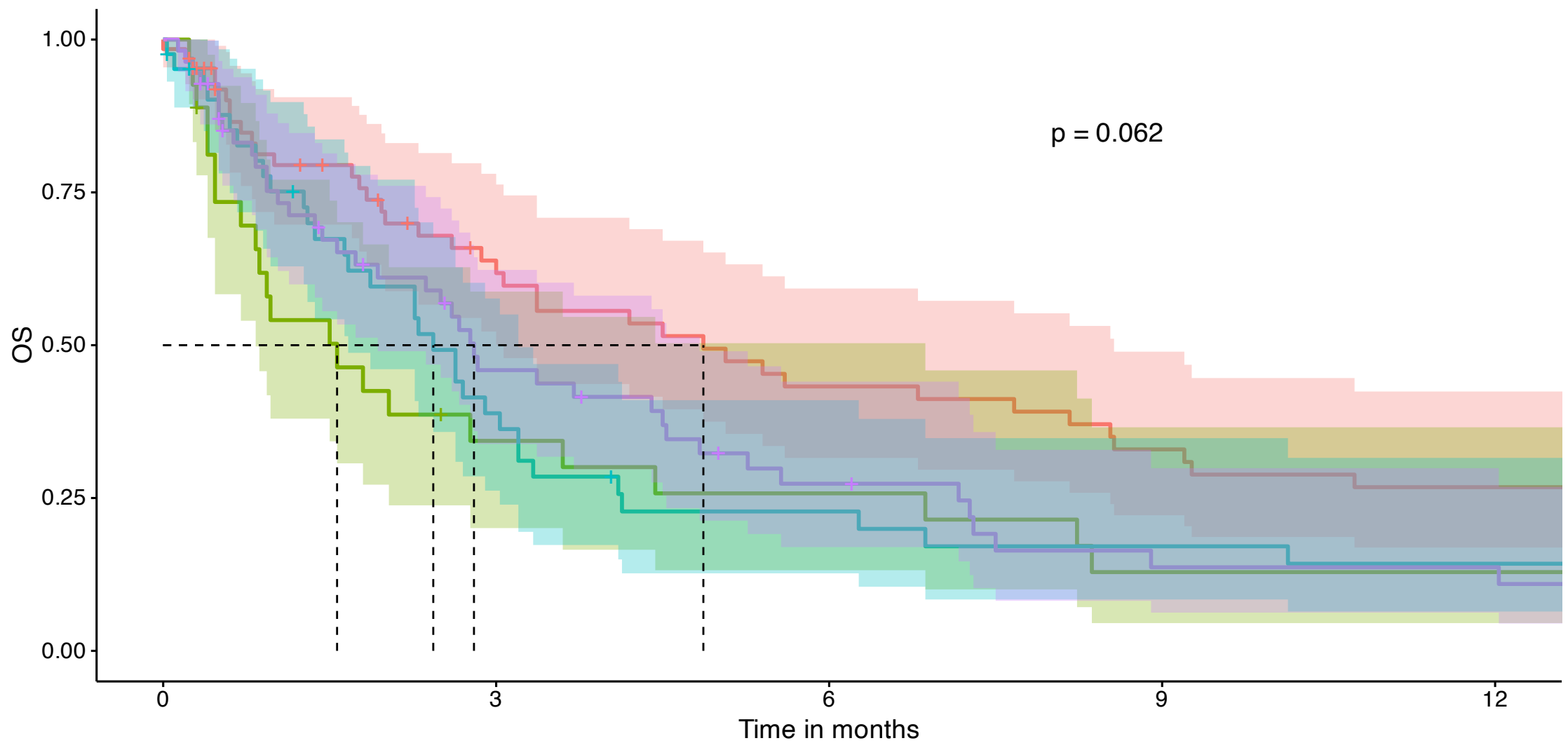
Strata + All



Number at risk



S2B

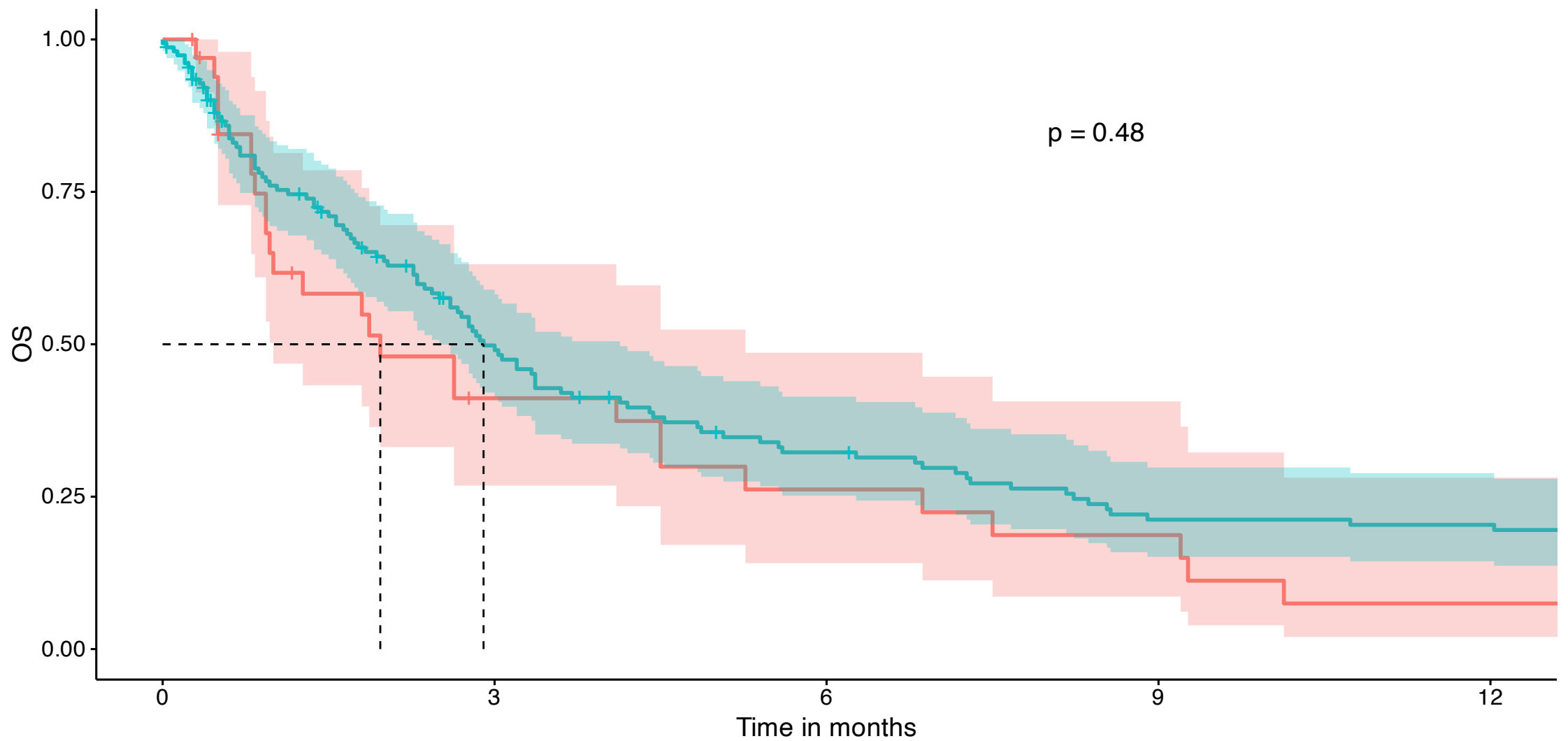
Strata  BrCa  Melanoma  NSCLC  Other

Number at risk

Strata	Time in months				
	0	3	6	9	12
BrCa	64	31	21	16	13
Melanoma	27	8	6	3	3
NSCLC	42	15	8	6	5
Other	55	21	11	5	5

S2C

Strata + 70 or more + Less than 70



Number at risk

Strata

70 or more

34

11

7

5

2

Less than 70

154

64

39

25

24

0

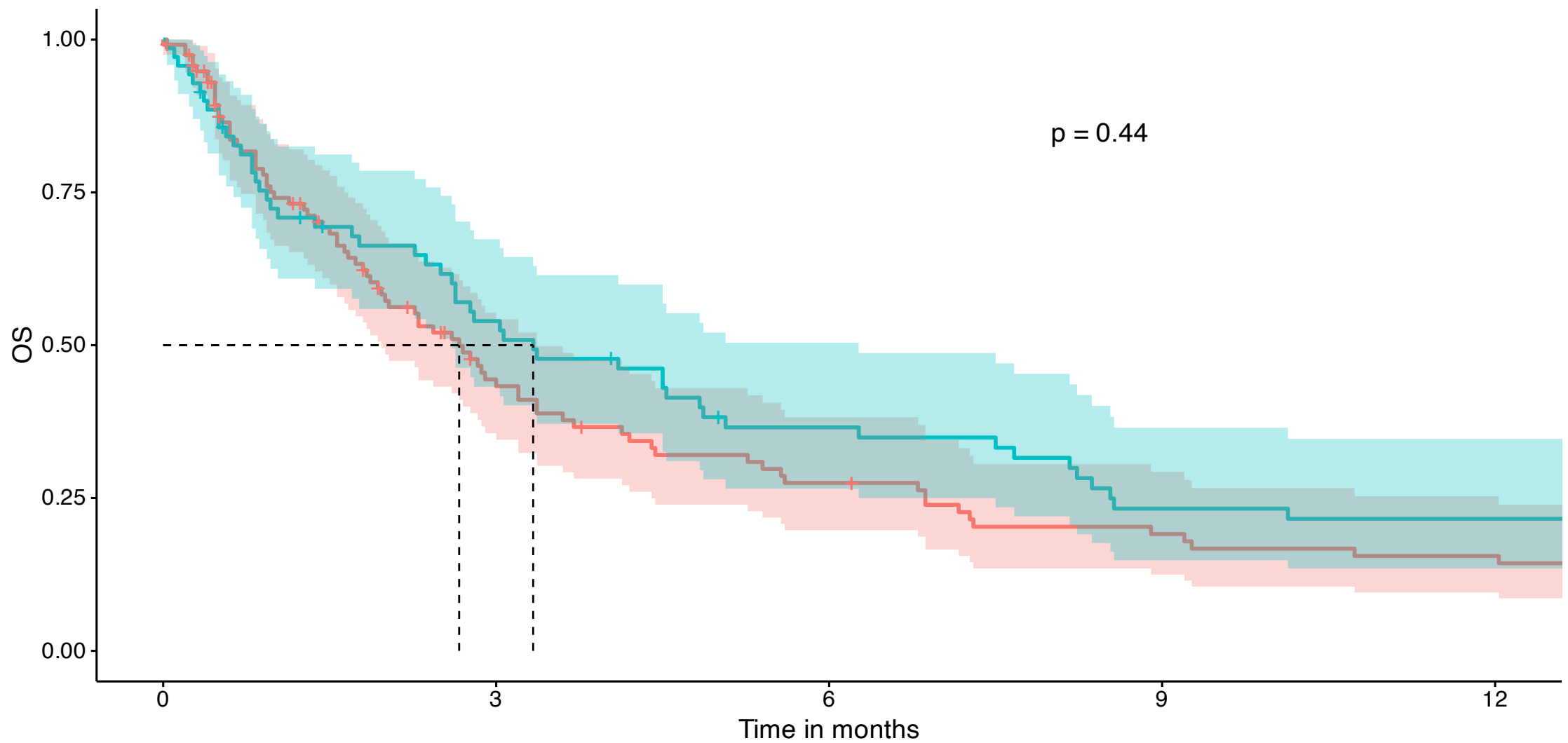
3

6

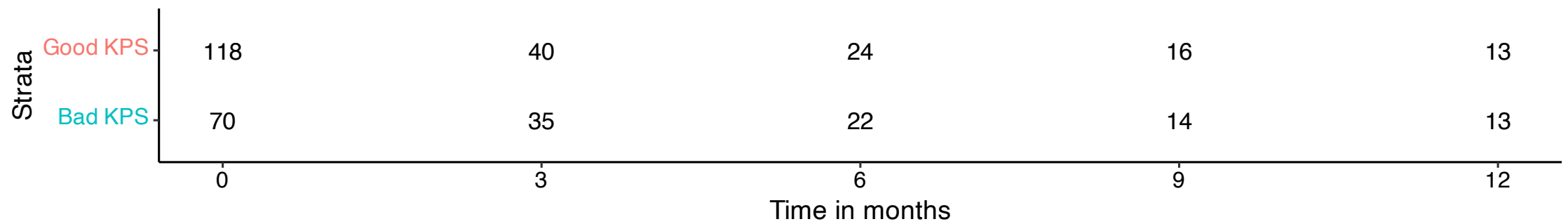
9

12

Time in months

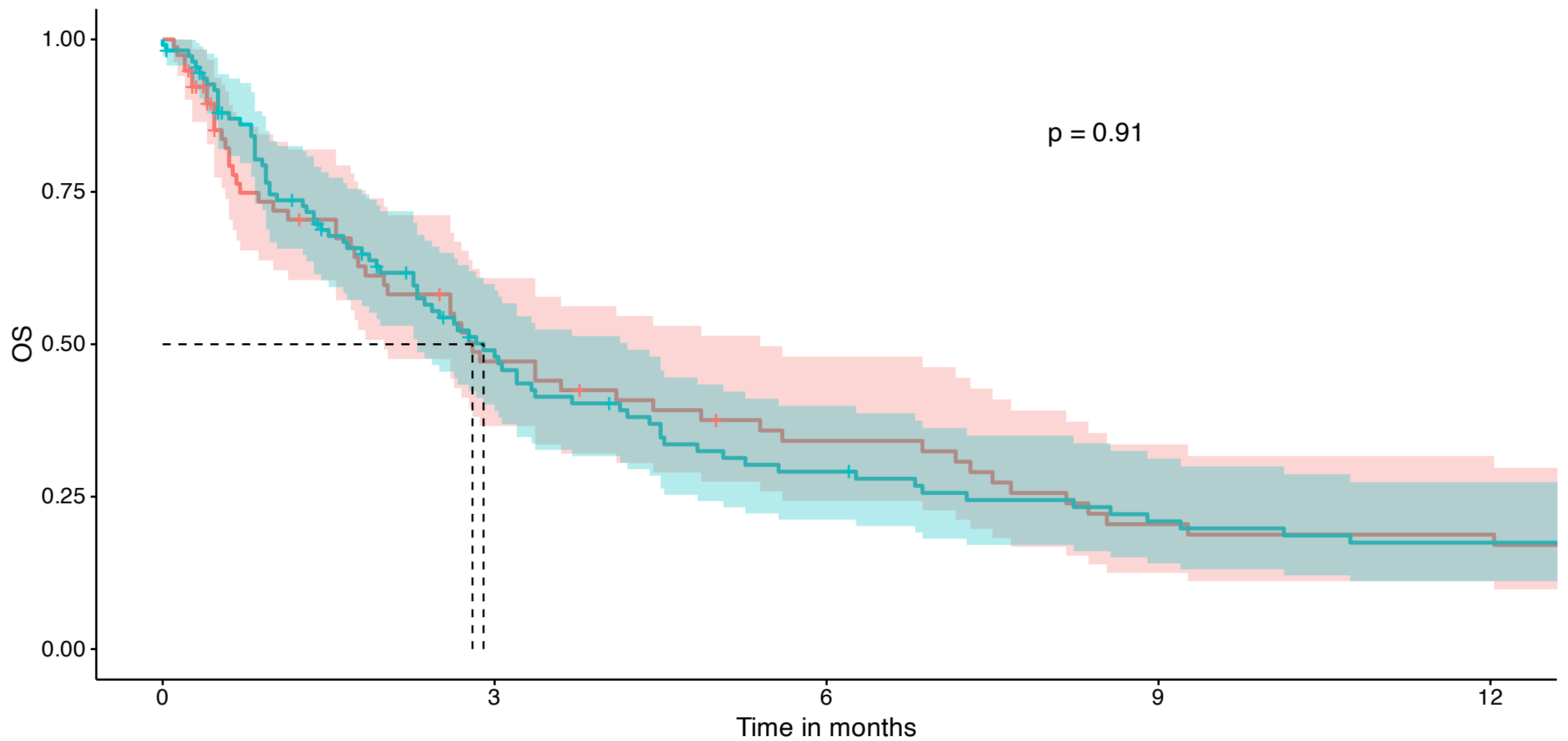
S2DStrata + Good KPS + Bad KPS

Number at risk



S2E

Strata + Other diseases + No other diseases



Number at risk

Strata

Other diseases

78

30

20

12

11

No other diseases

110

45

26

18

15

0

3

6

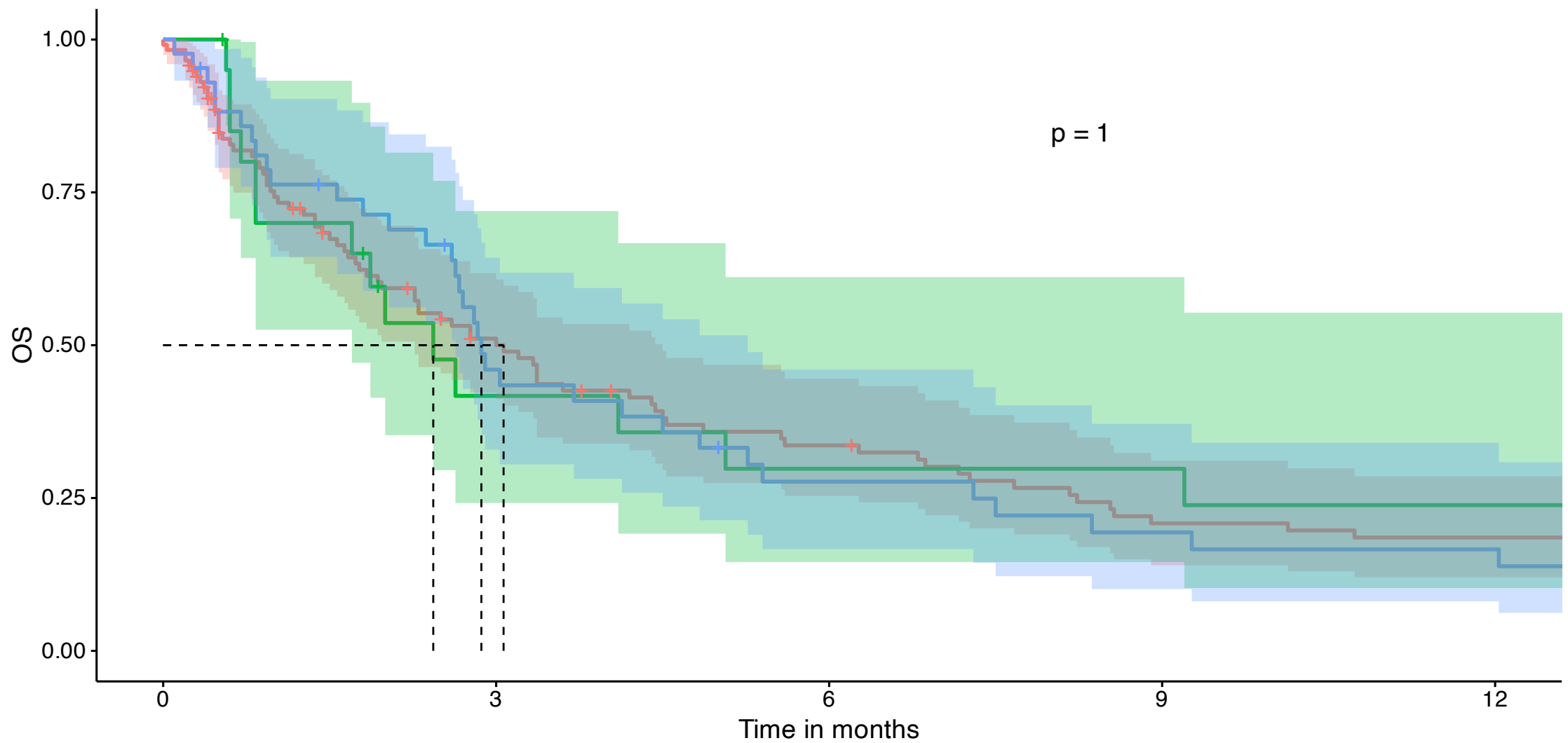
9

12

Time in months

S2F

Strata cLMD mixed nLMD

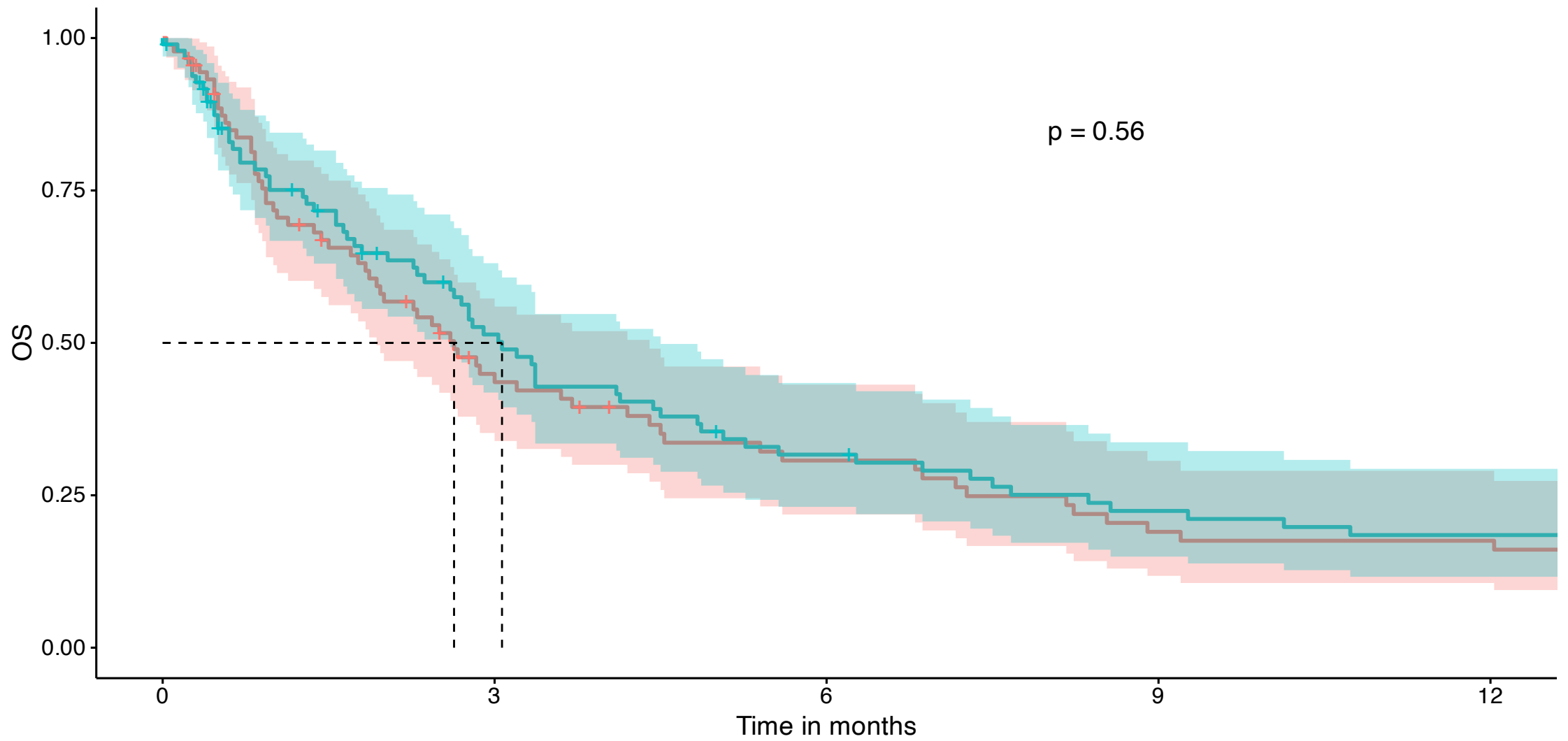


Number at risk

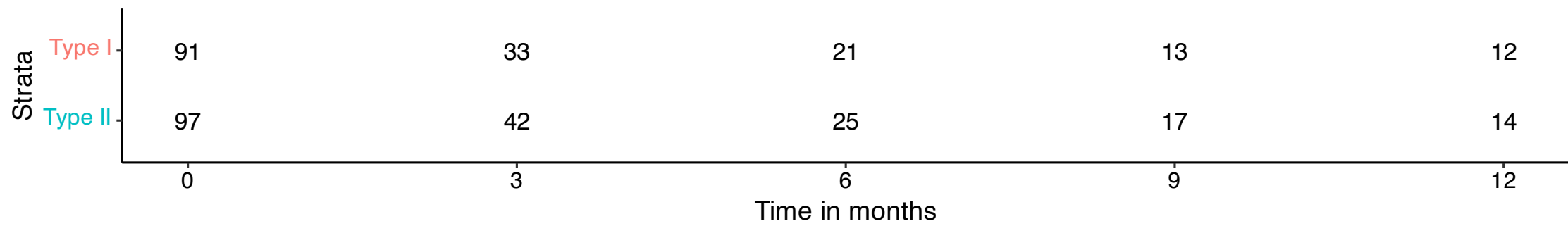
Strata					
cLMD	117	48	30	18	16
mixed	21	7	5	5	4
nLMD	43	18	10	7	6
	0	3	6	9	12
	Time in months				

S2G

Strata Type I Type II

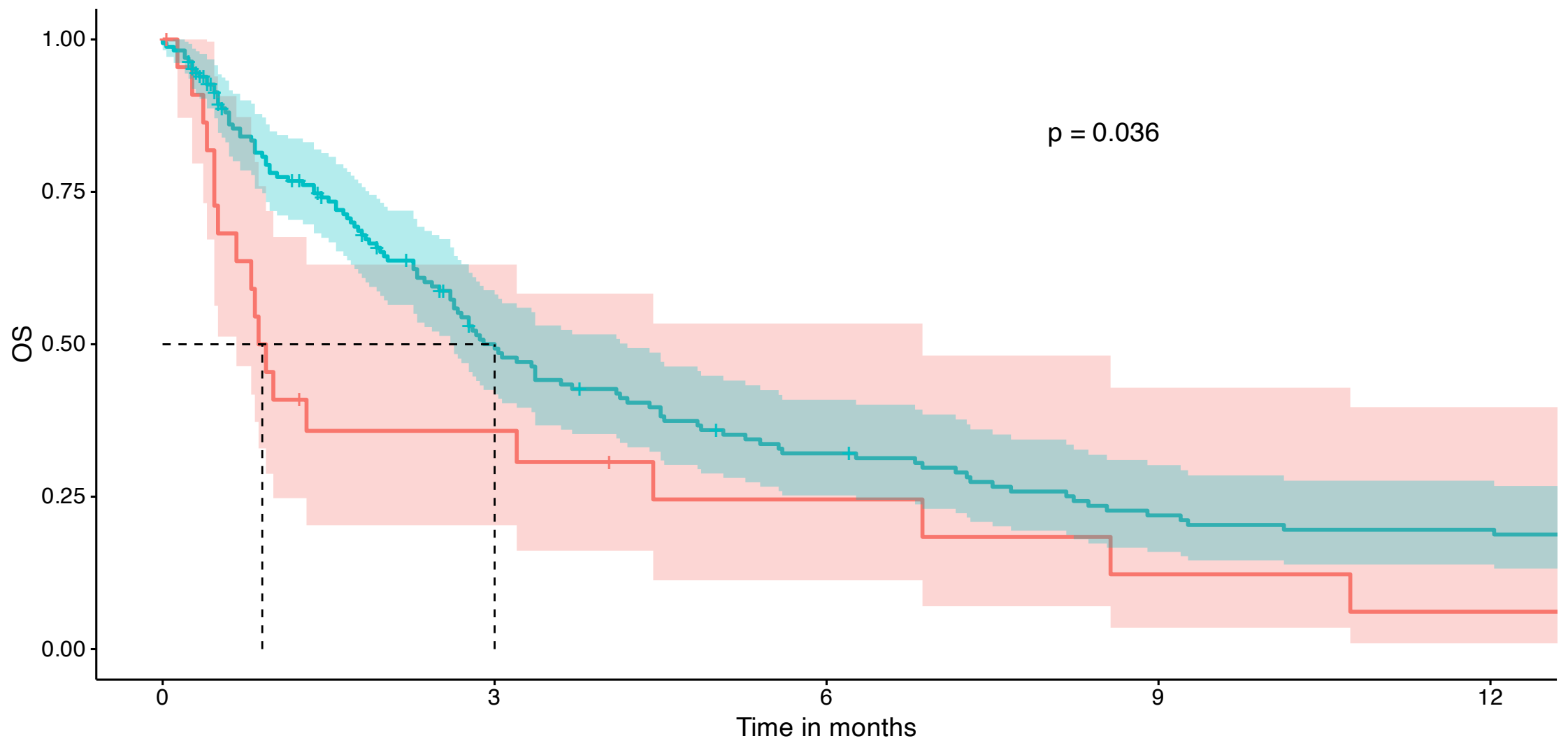


Number at risk

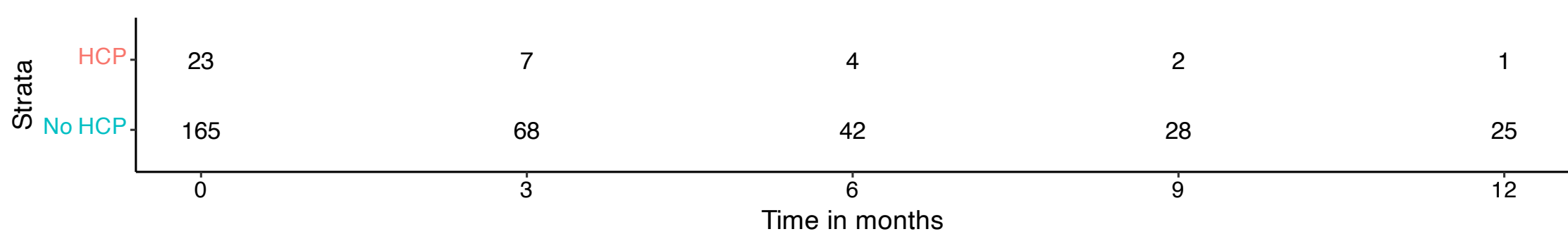


S2H

Strata HCP No HCP

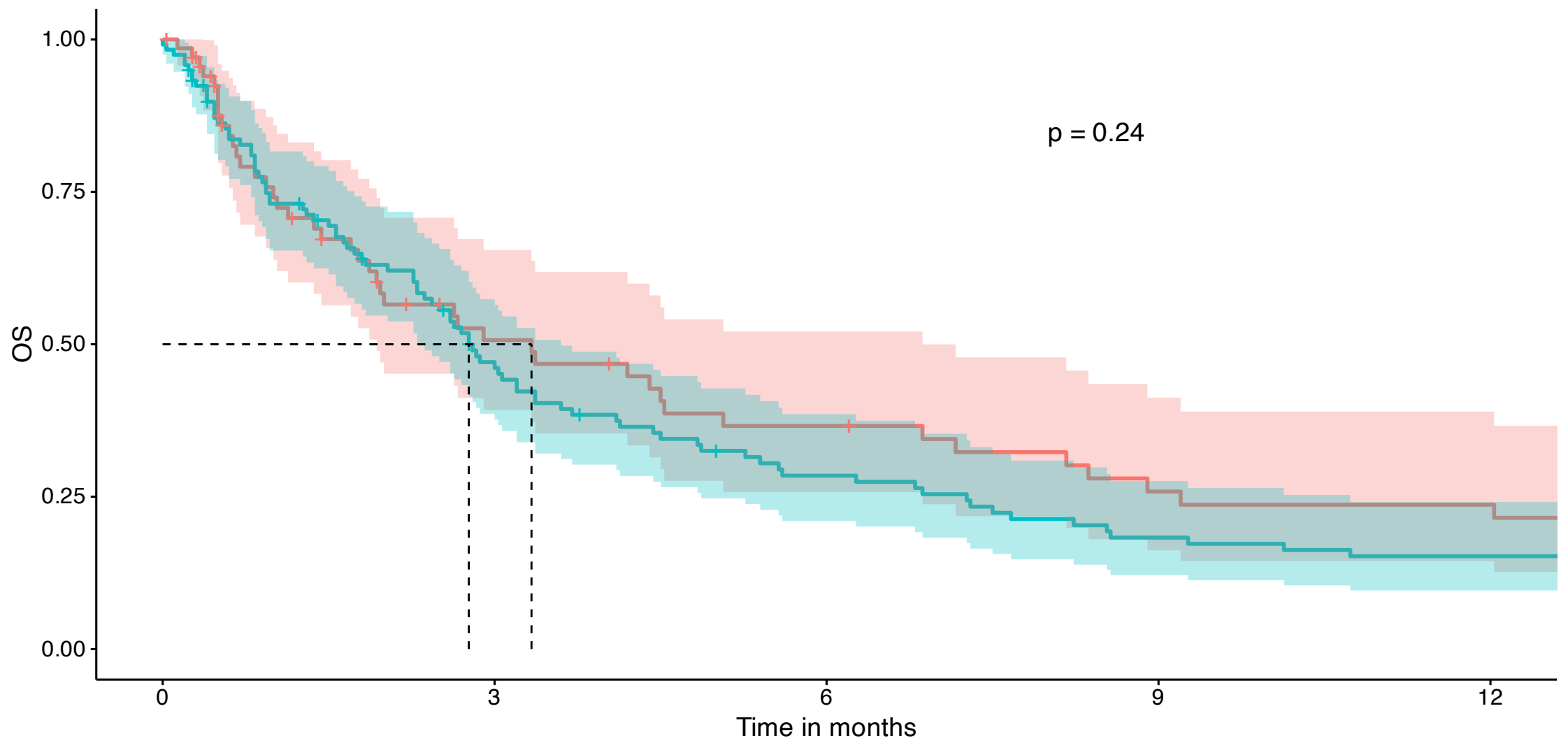


Number at risk



S3A

Strata + no history of BrM + known history BrM



Number at risk

Strata

no history of BrM

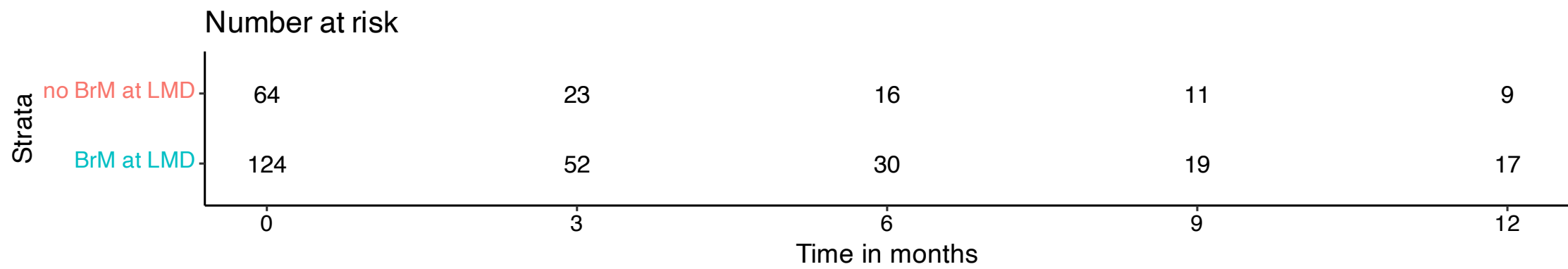
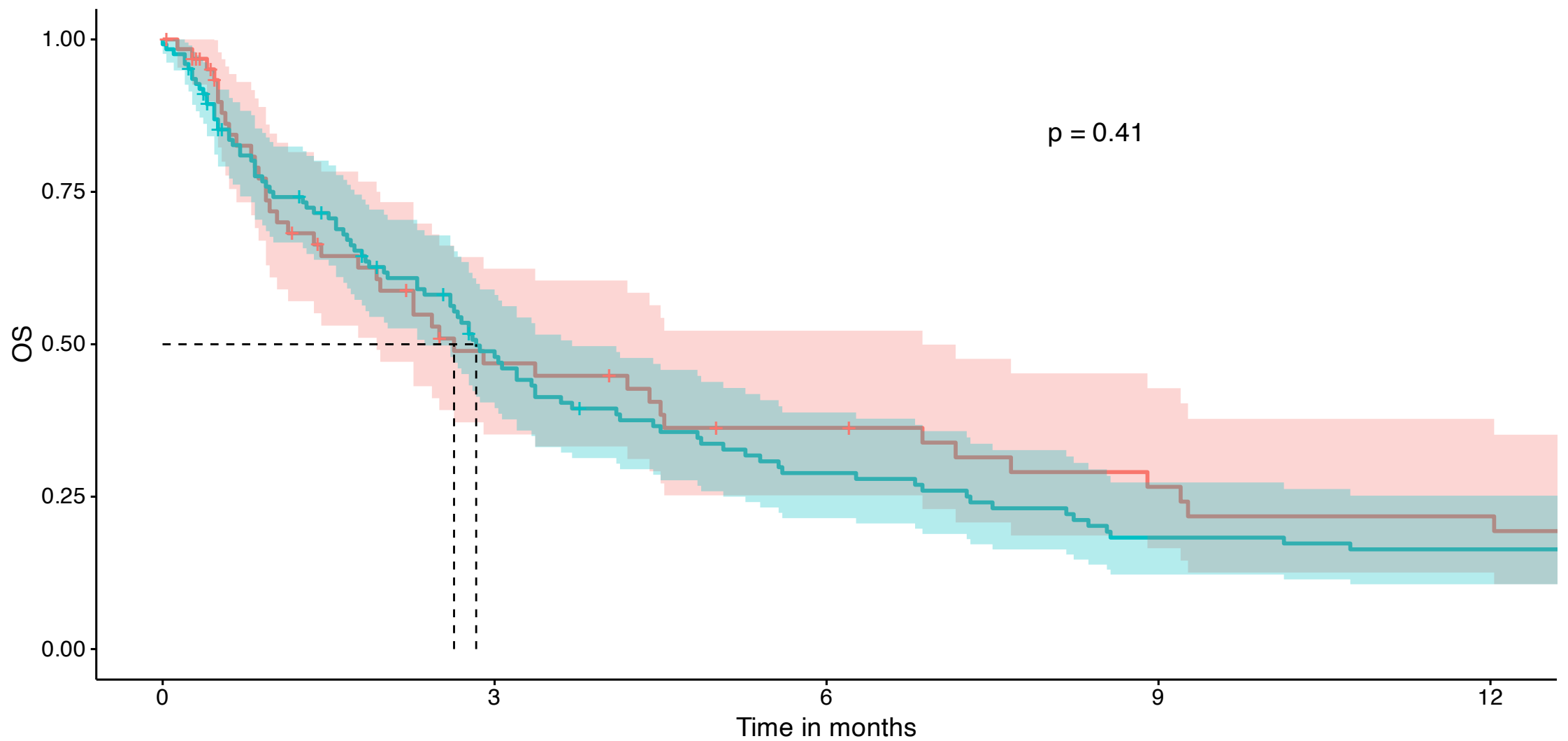
known history BrM

69	26	18	12	11
119	49	28	18	15
0	3	6	9	12

Time in months

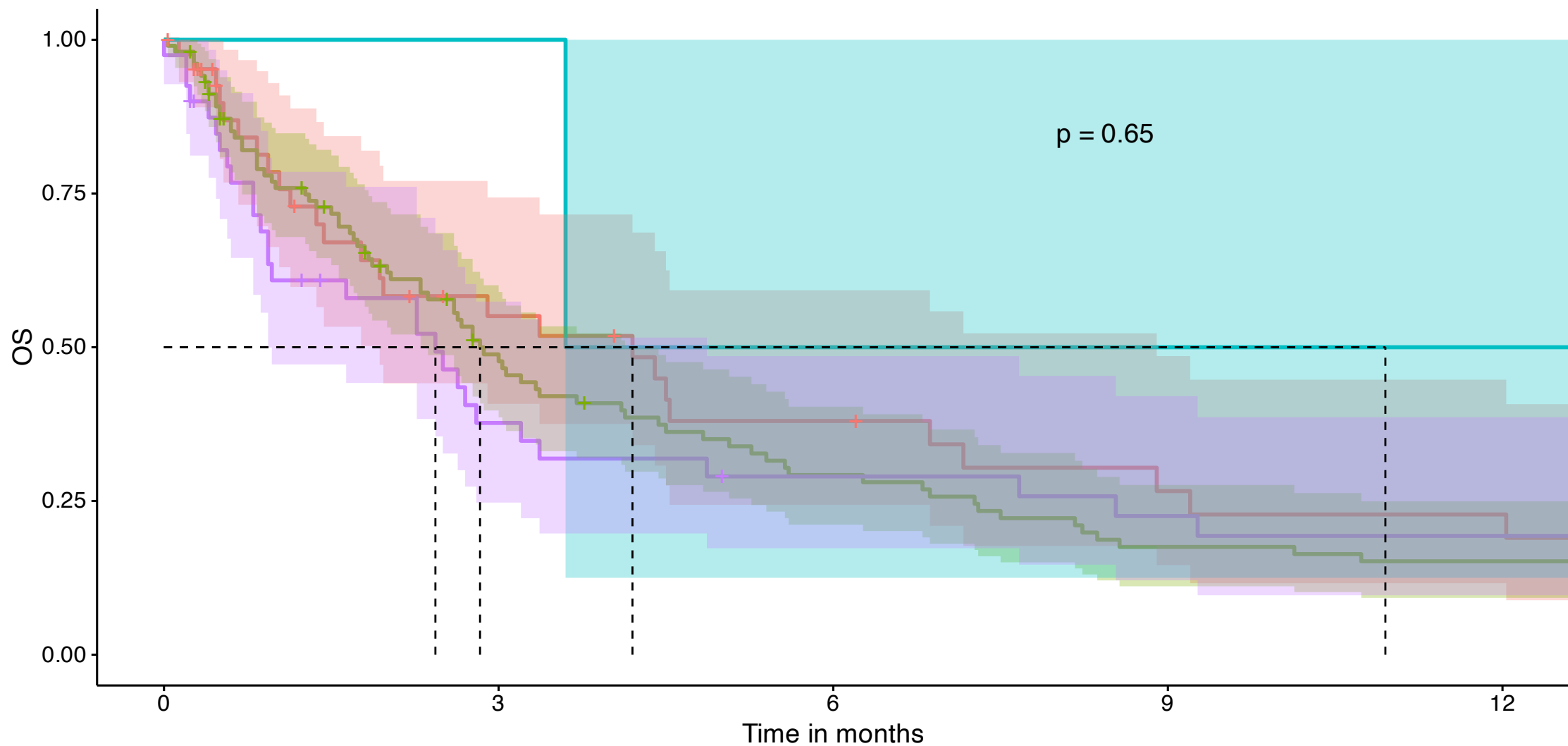
S3B

Strata + no BrM at LMD + BrM at LMD

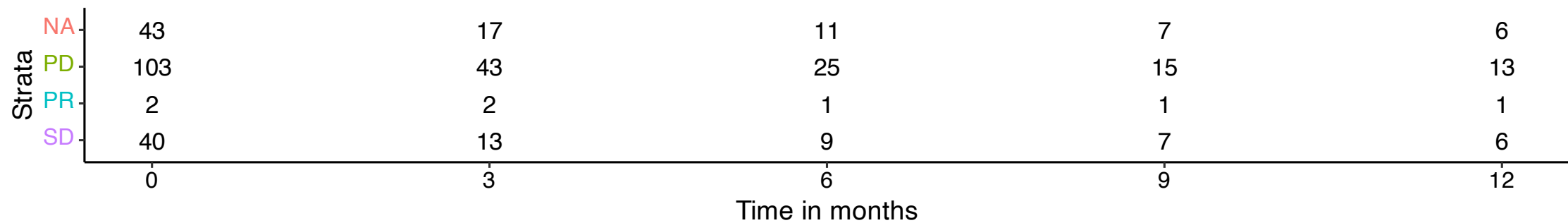


S3C

Strata NA PD PR SD

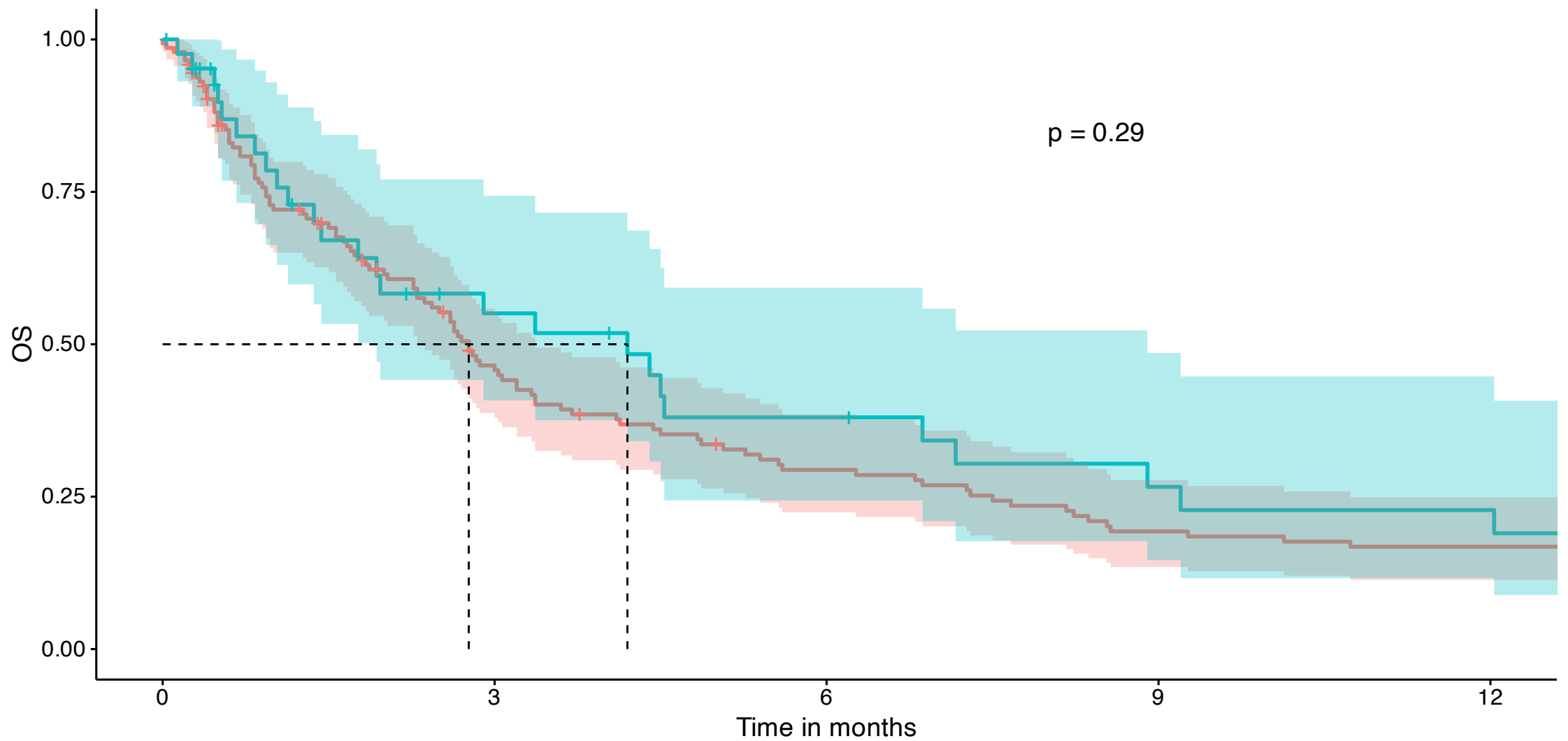


Number at risk



S3D

Strata + CNSpDisease + noCNSpDisease



Number at risk

Strata

CNSpDisease
noCNSpDisease

145	58	35	23	20
43	17	11	7	6
0	3	6	9	12

Time in months

S3E

Frequency

150

100

50

0

No

Yes

No

Yes

Not applicable (no parenchymal intracranial metastases)

PD

PR

SD

Activity of systemic disease

- Not applicable (no extracranial metastases)
- PD
- PR
- SD

History parenchymal BrM before LMD diagnosis

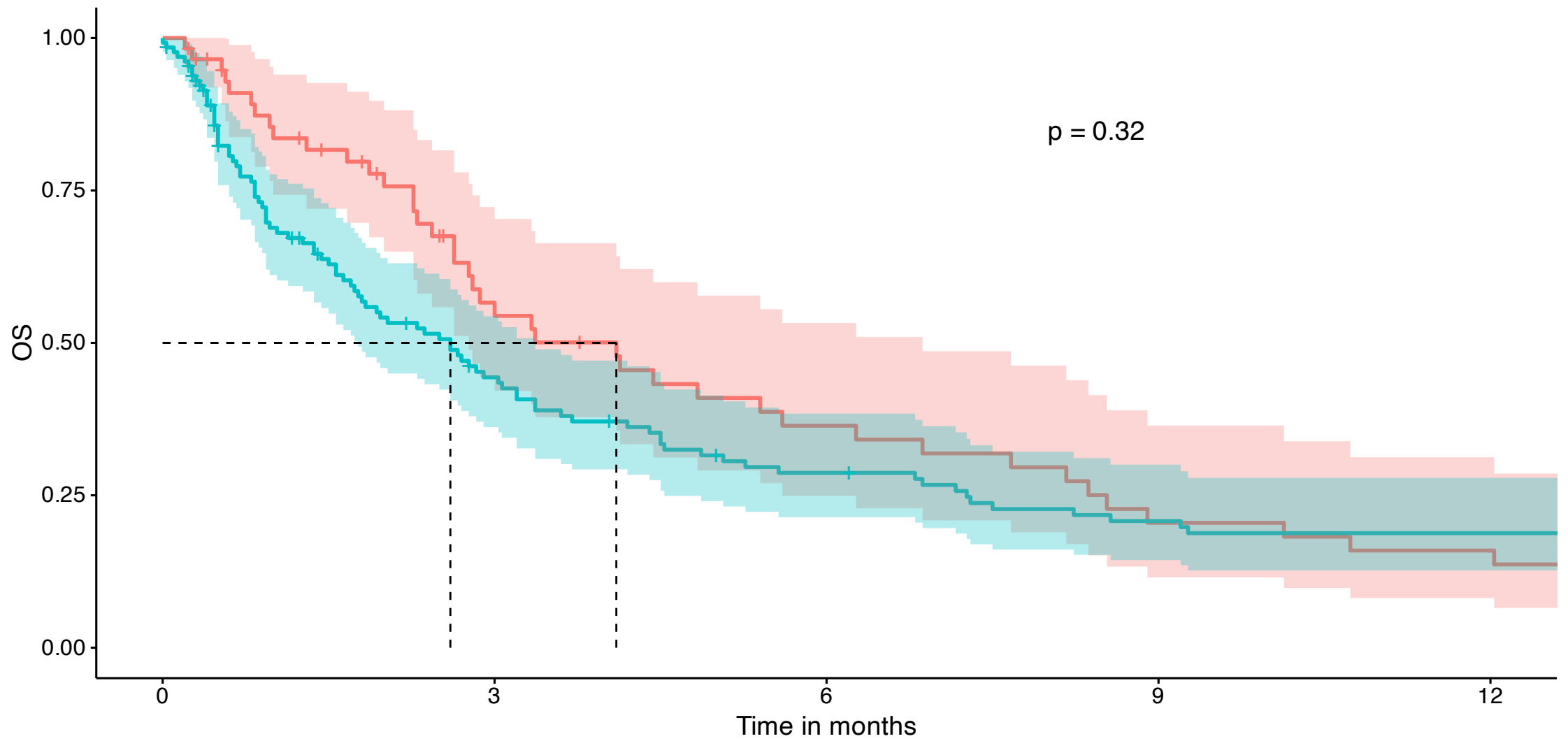
Present BrM at LMD diagnosis

Activity of BrM at LMD diagnosis

Demographic

S4A

Strata + no history of EcM + known history EcM



Number at risk

Strata

no history of EcM

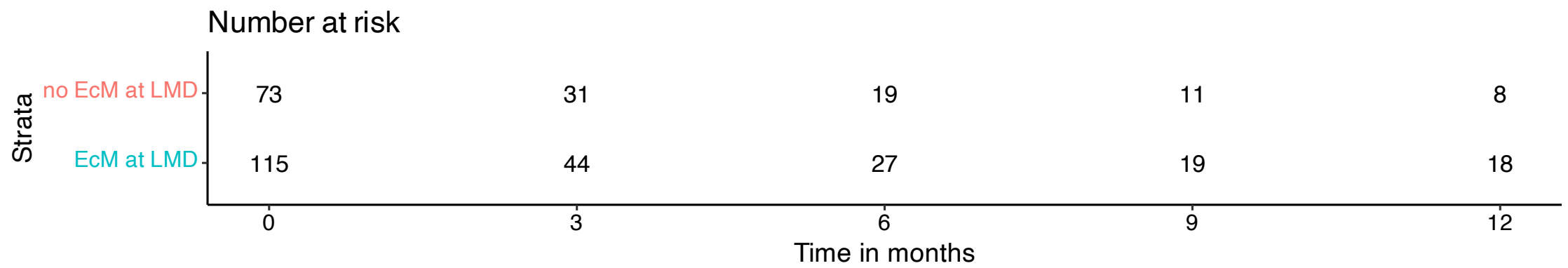
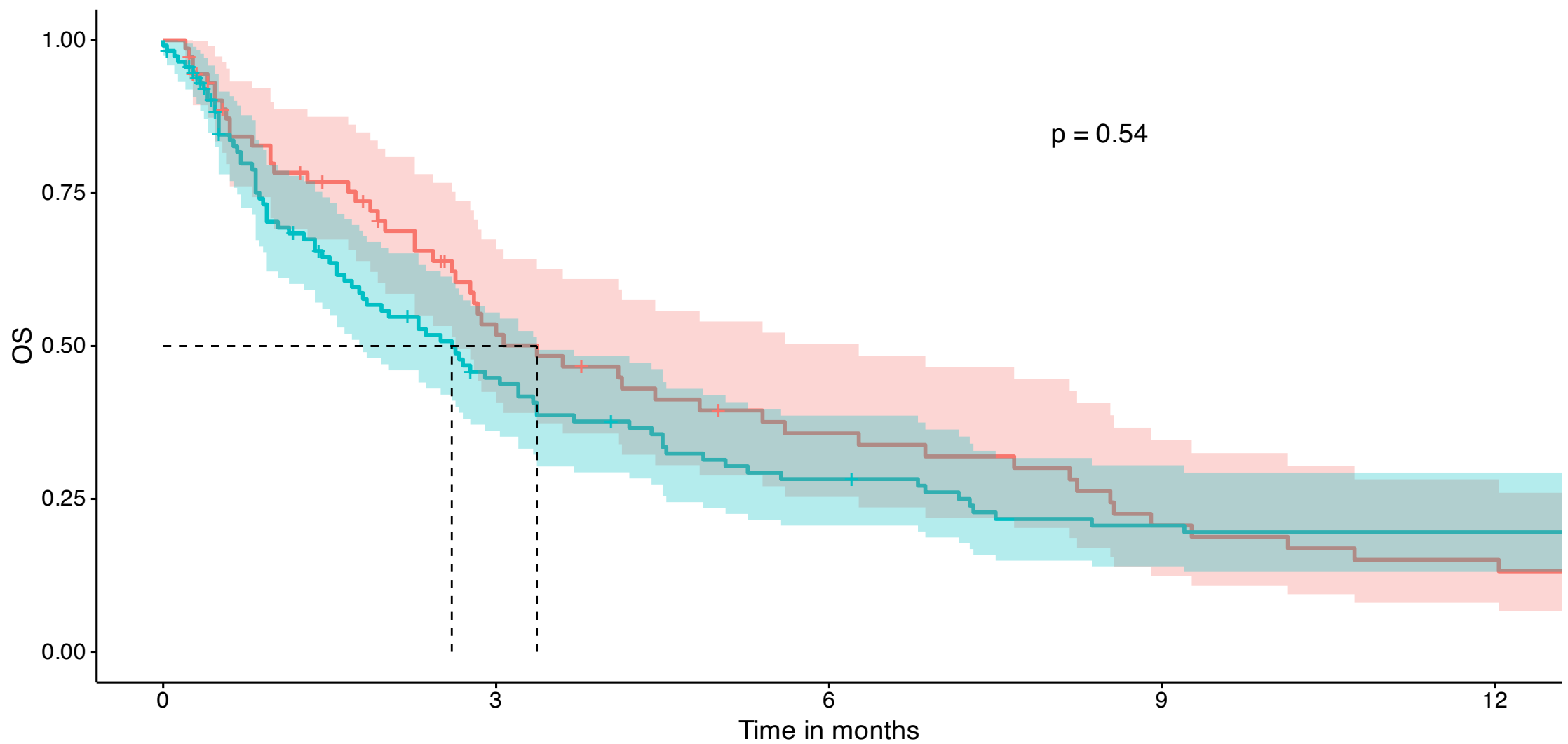
known history EcM

58	26	16	9	7
130	49	30	21	19
0	3	6	9	12

Time in months

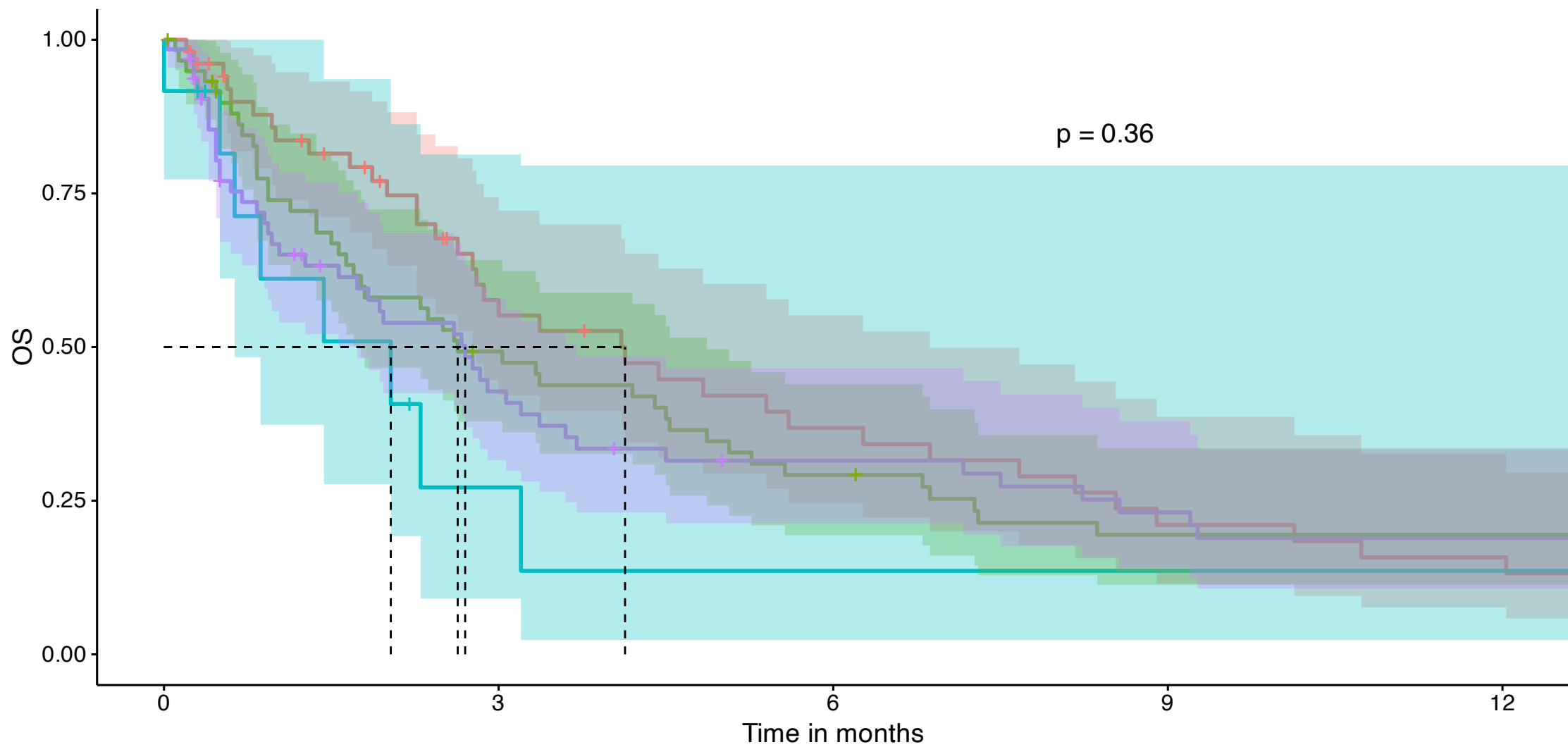
S4B

Strata no EcM at LMD EcM at LMD

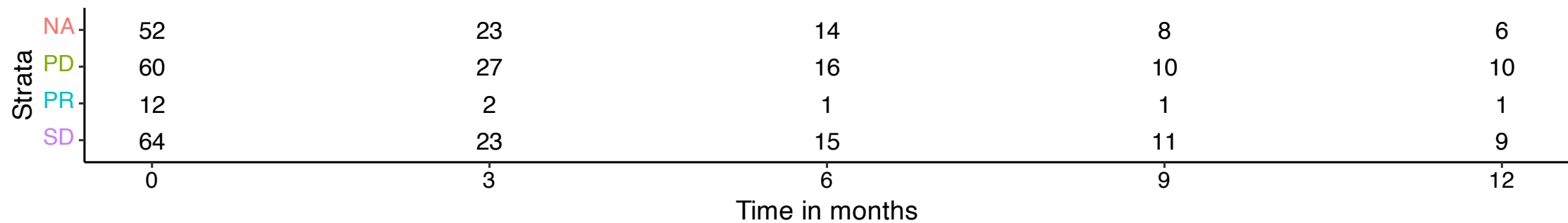


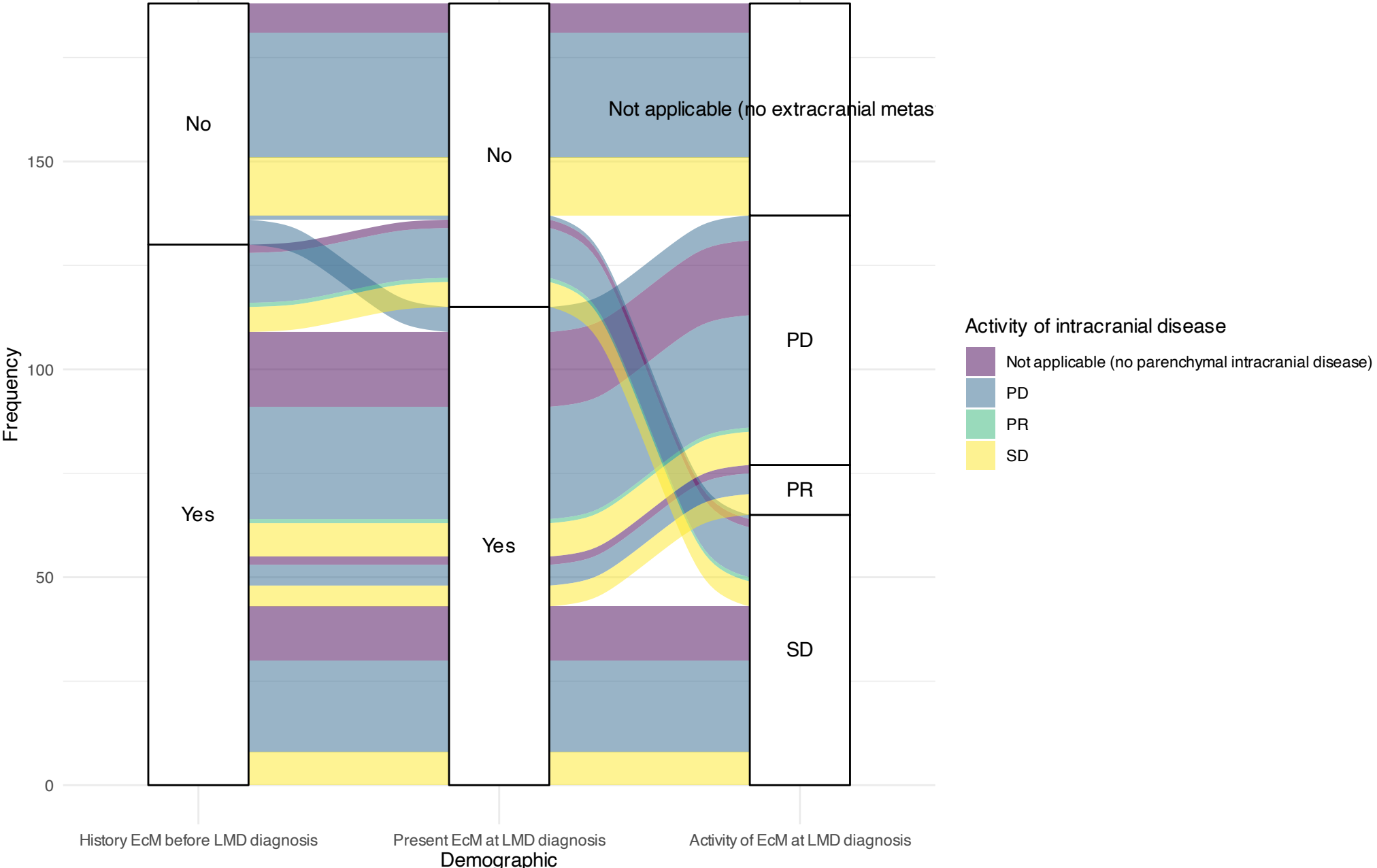
S4D

Strata NA PD PR SD



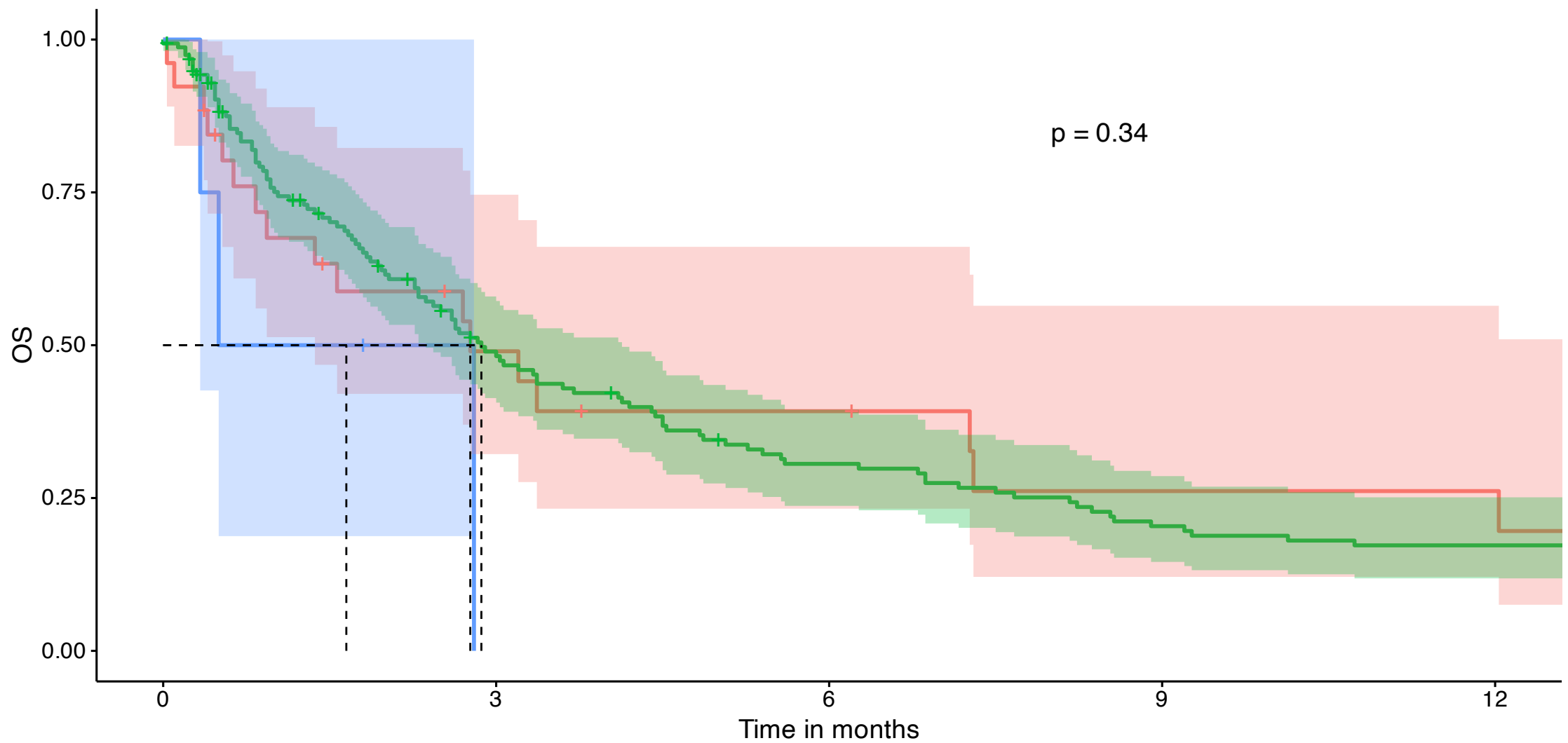
Number at risk





S4F

Strata active PT no active PT CUP



Number at risk

Strata

active PT	26	10	7	4	4
no active PT	158	65	39	26	22
CUP	4	0	0	0	0

Time in months