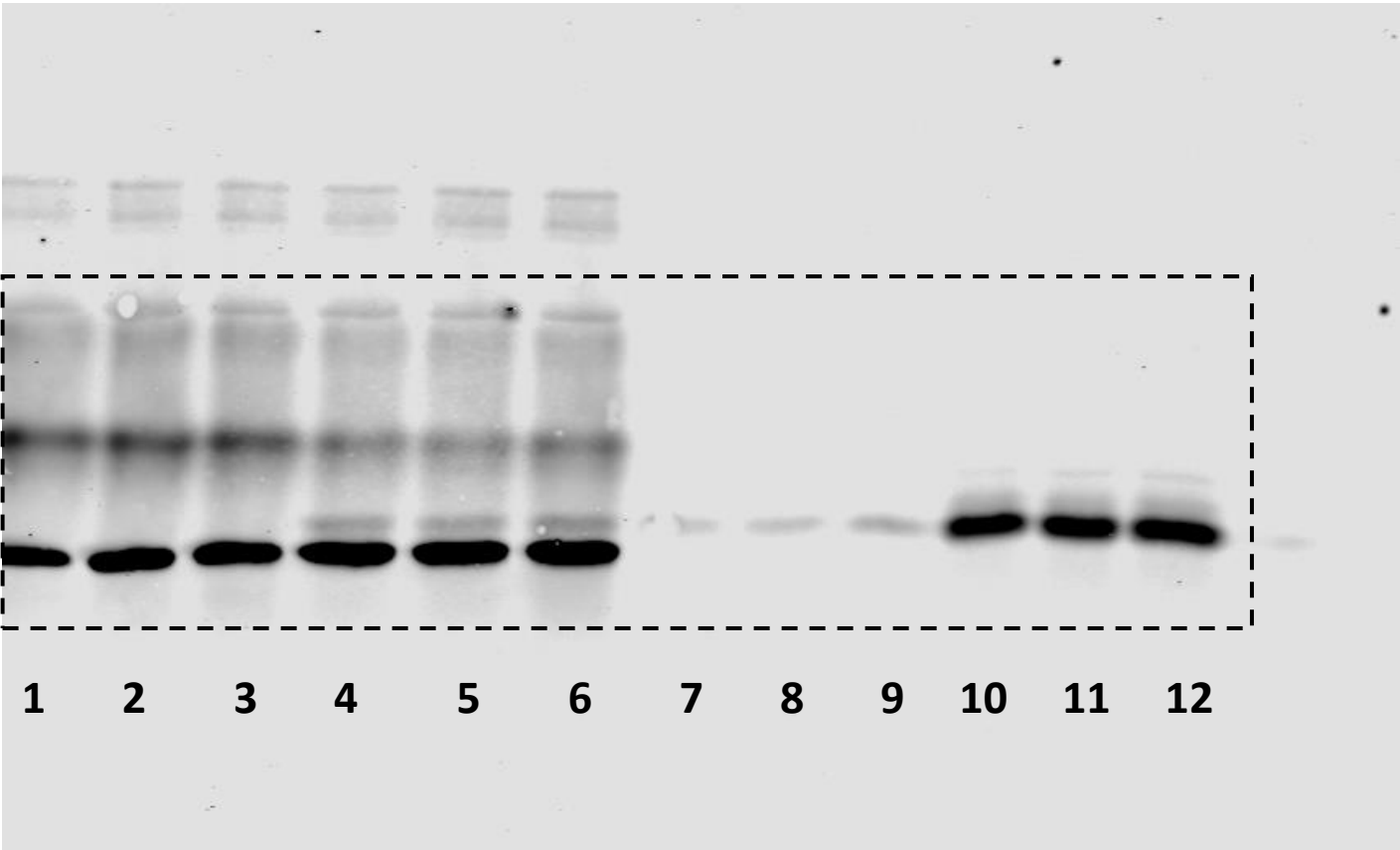


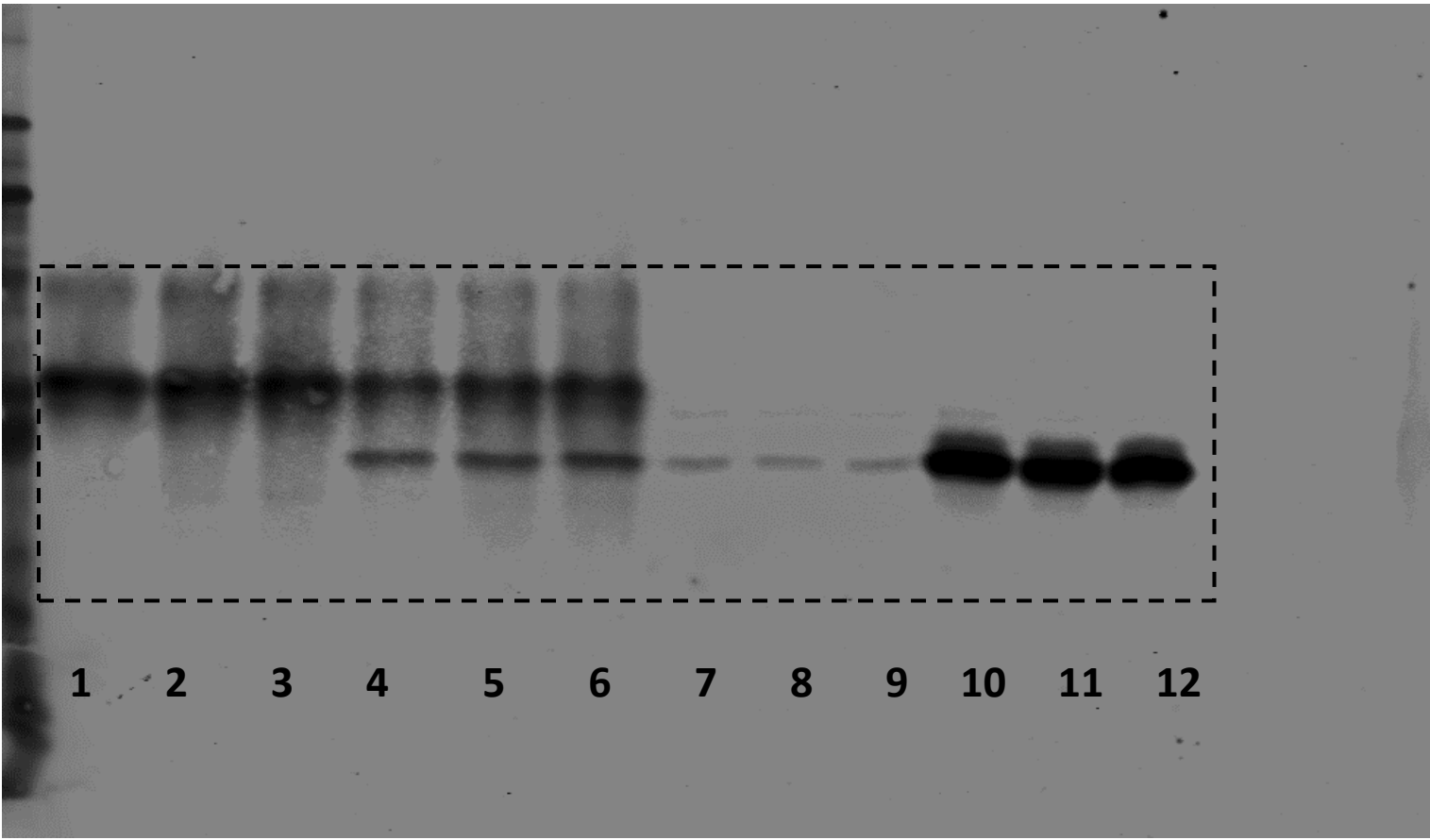
Figure 3a



anti-DNAJC12

1-3: *Dnajc12* IP-TPH2
4-6: *Dnajc12+Tph2* IP-TPH2
7-9: *Dnajc12* input
10-12: *Dnajc12+Tph2* input

Figure 3b



anti DNAJC12

1-3: *Dnajc12* IP-TPH1
4-6: *Dnajc12+Tph1* IP-TPH1
7-9: *Dnajc12* input
10-12: *Dnajc12+Tph1* input

Figure 4a

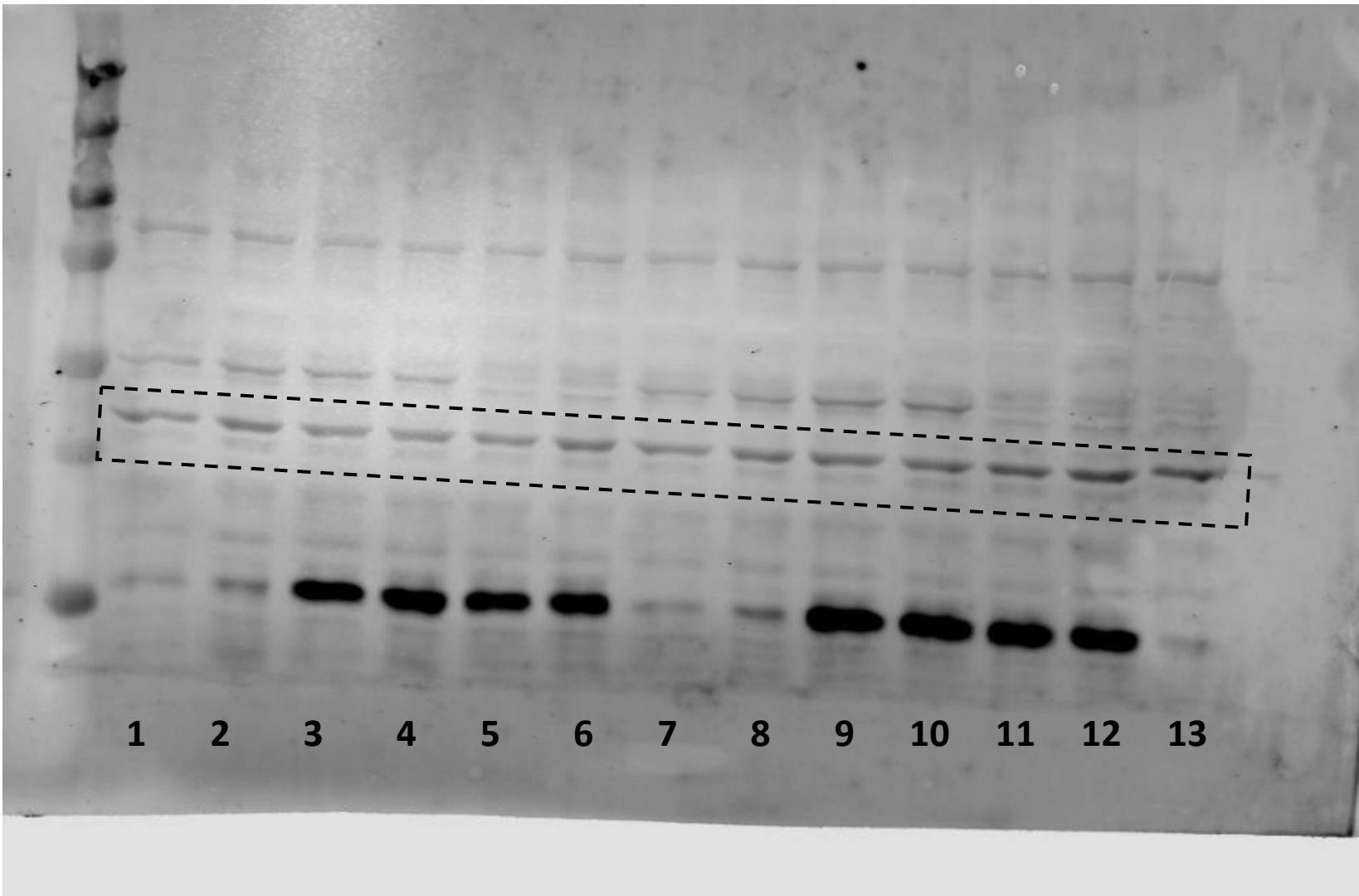
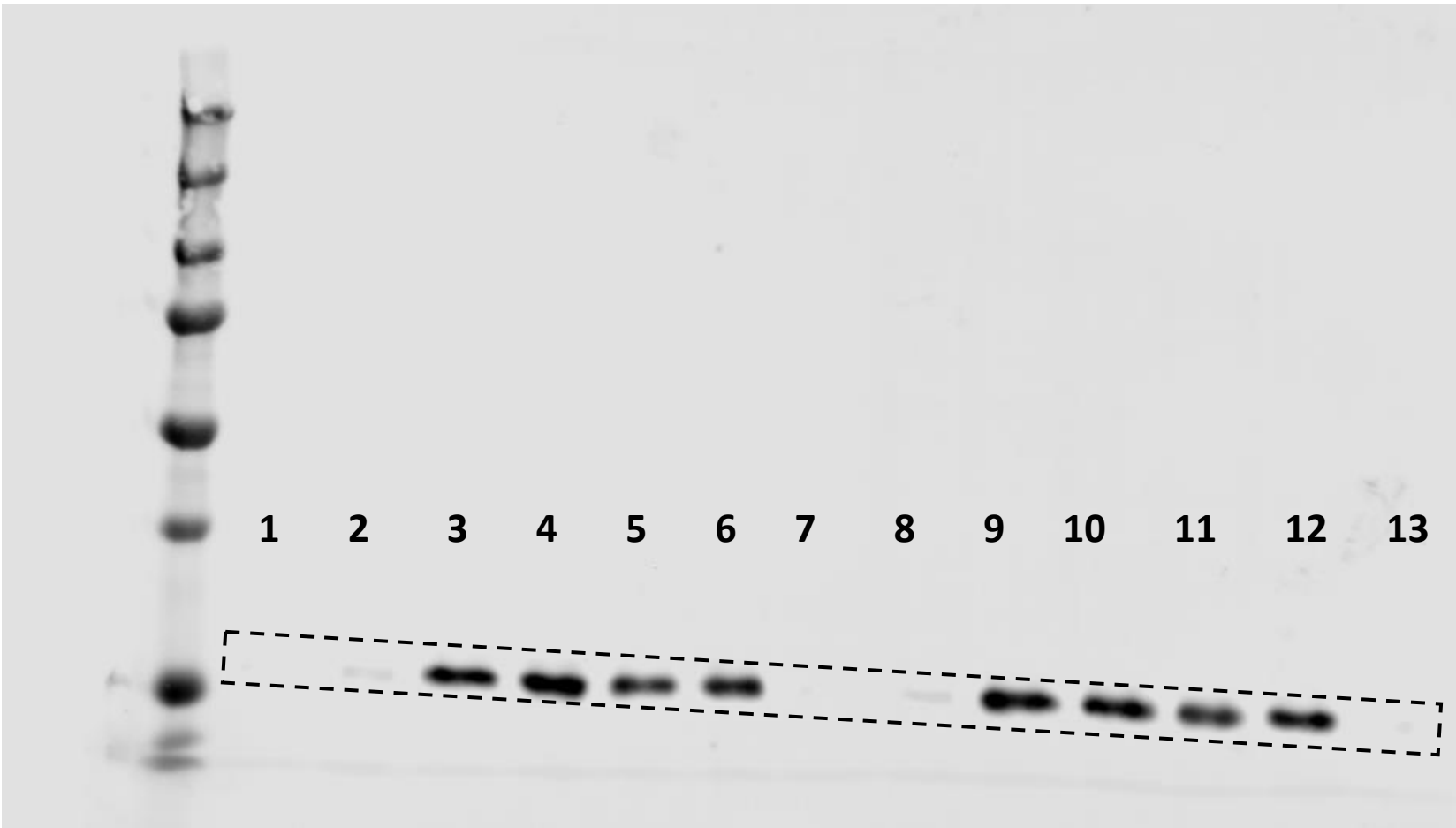
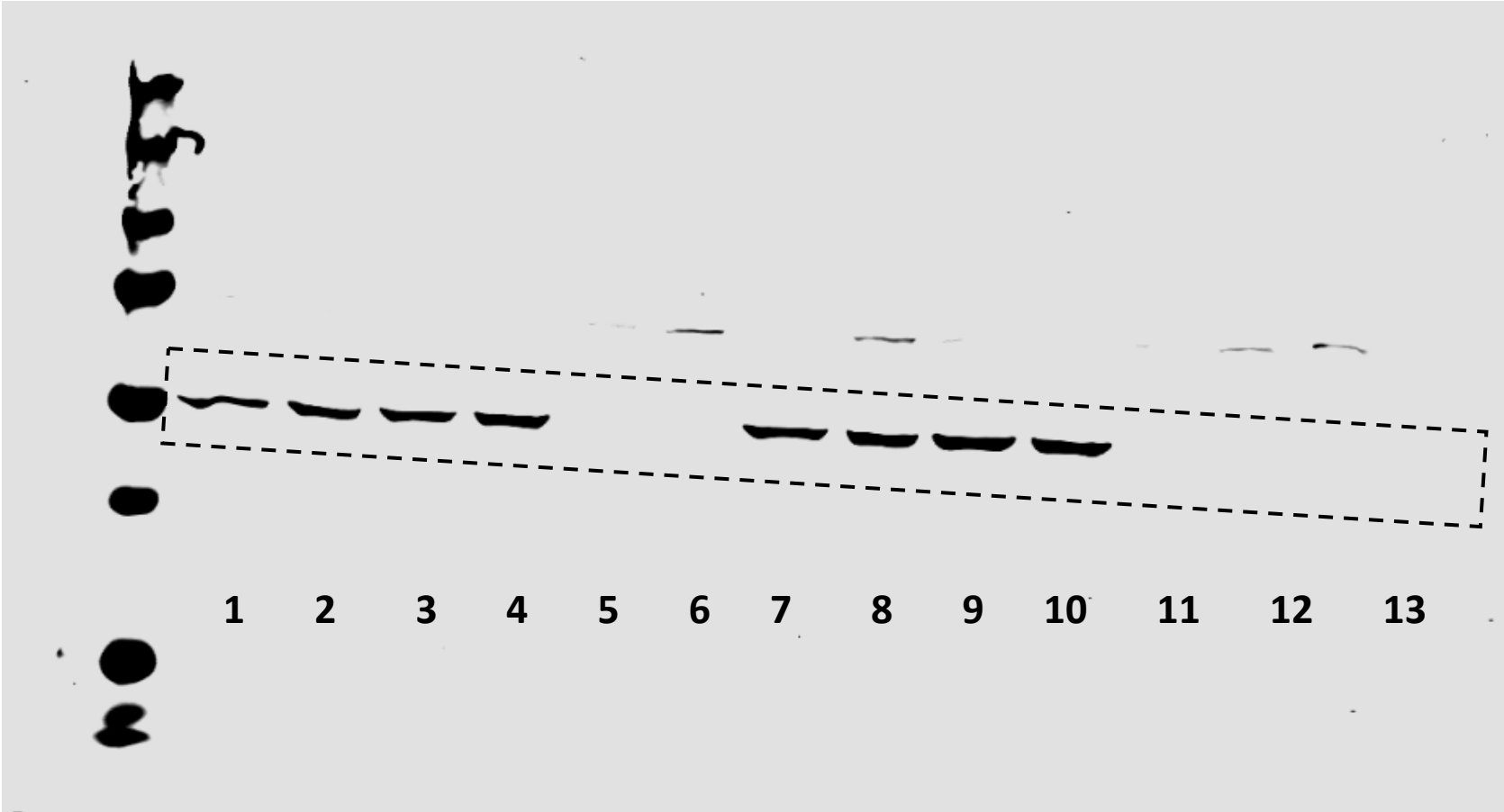
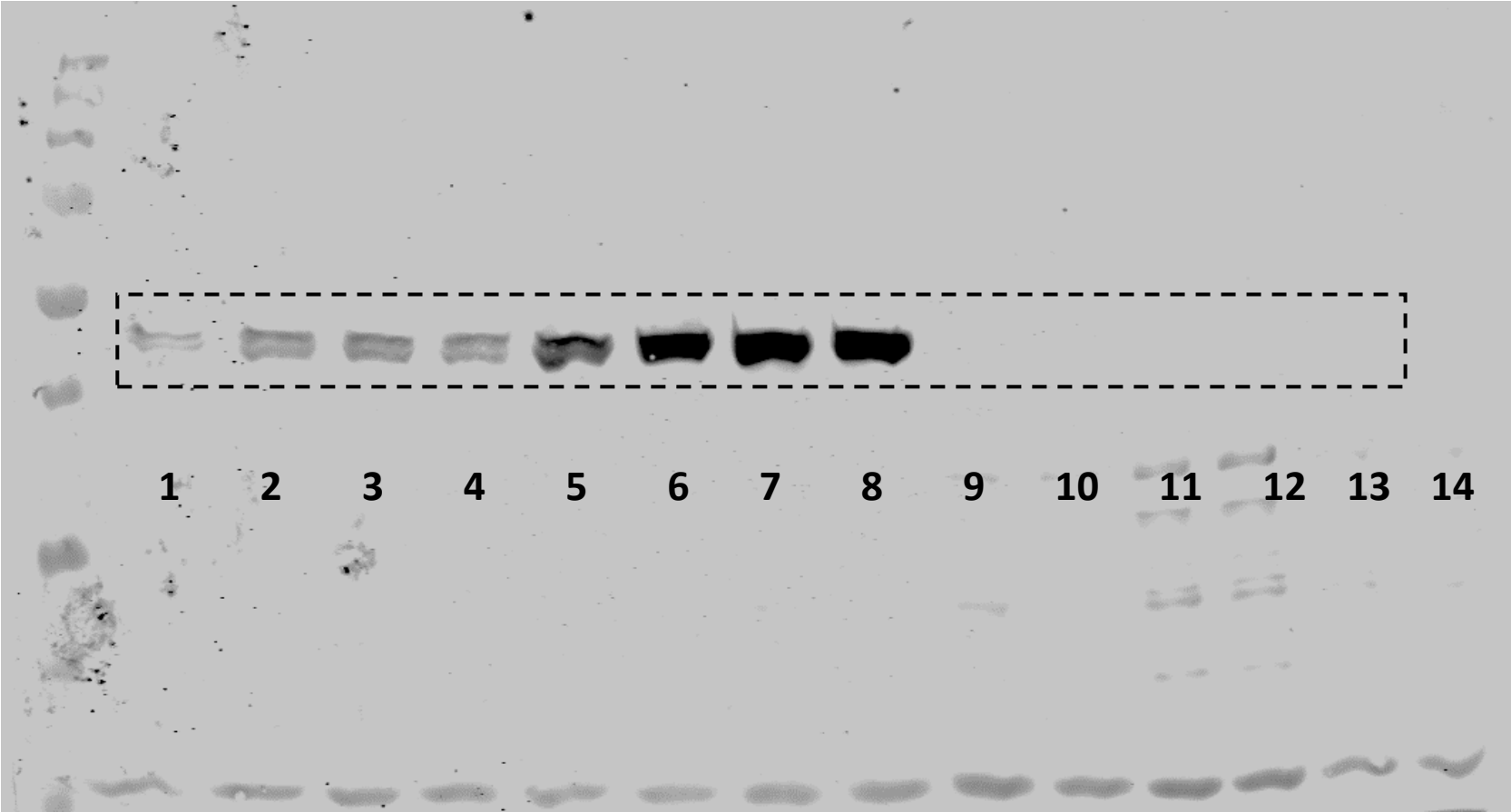
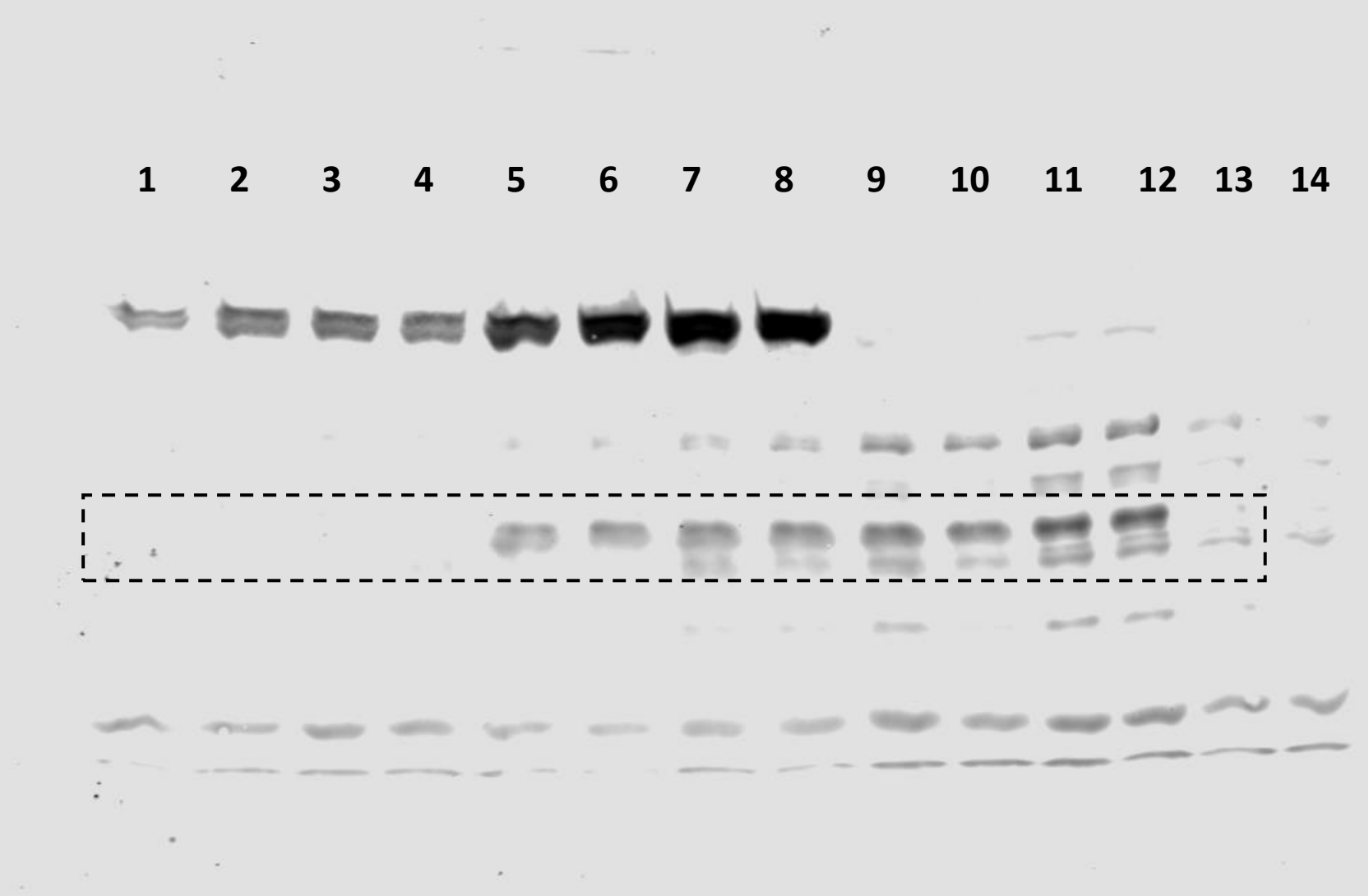


Figure 4d

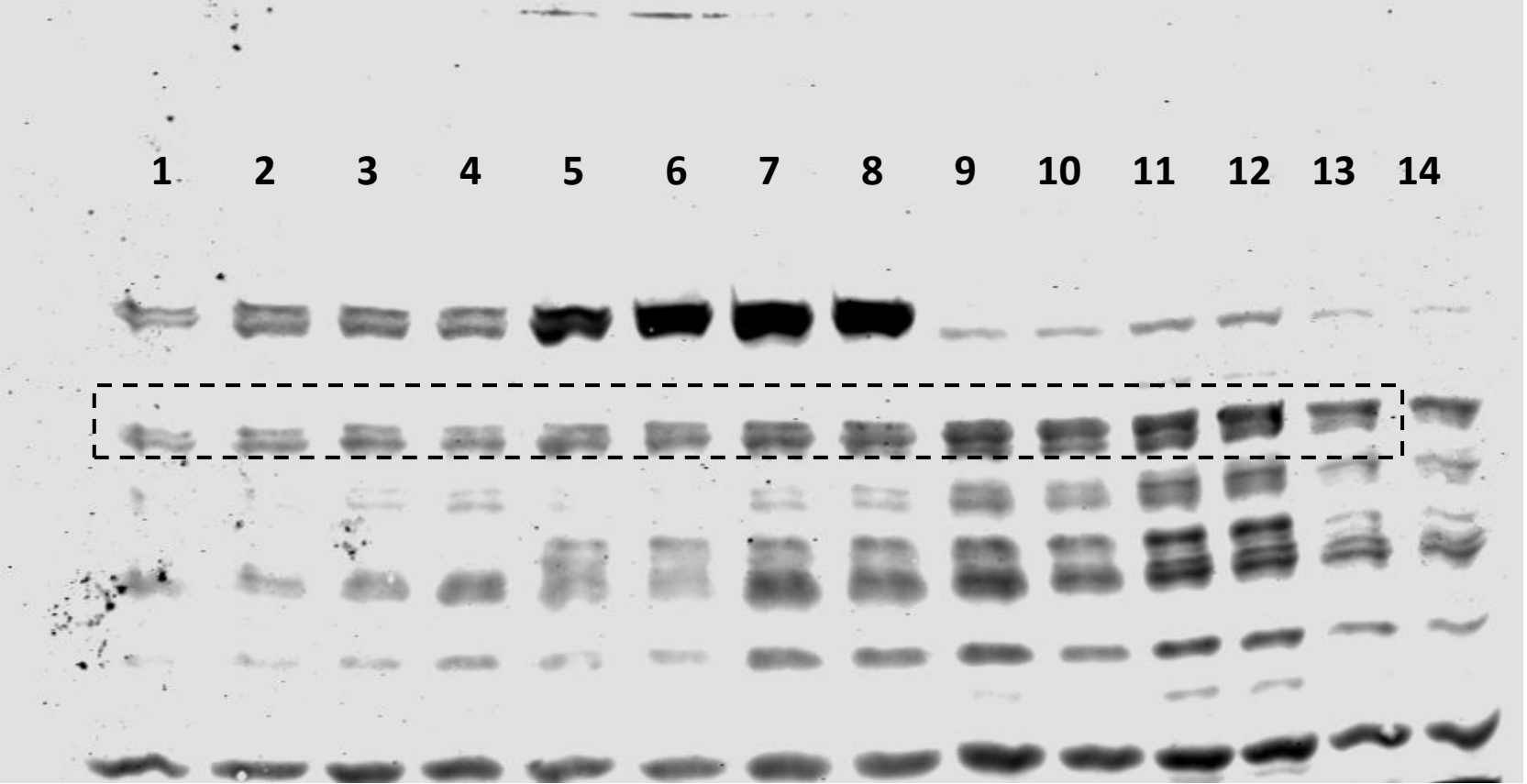


Anti TPH1

1-4: *Tph1*
5-8: *Tph1+Dnajc12*
9-12: *Dnajc12*
13-14: Vector

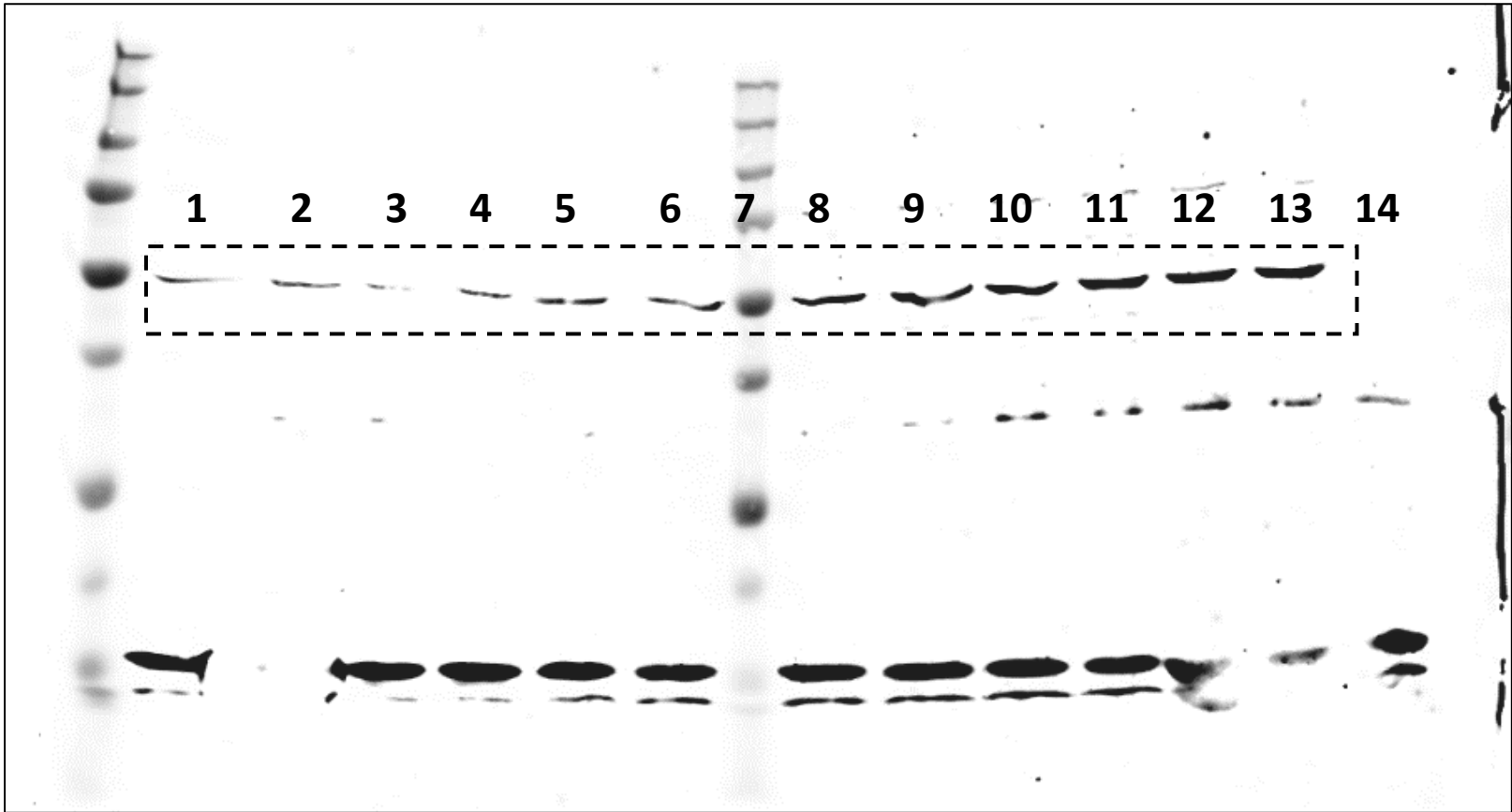


Anti DNAJC12



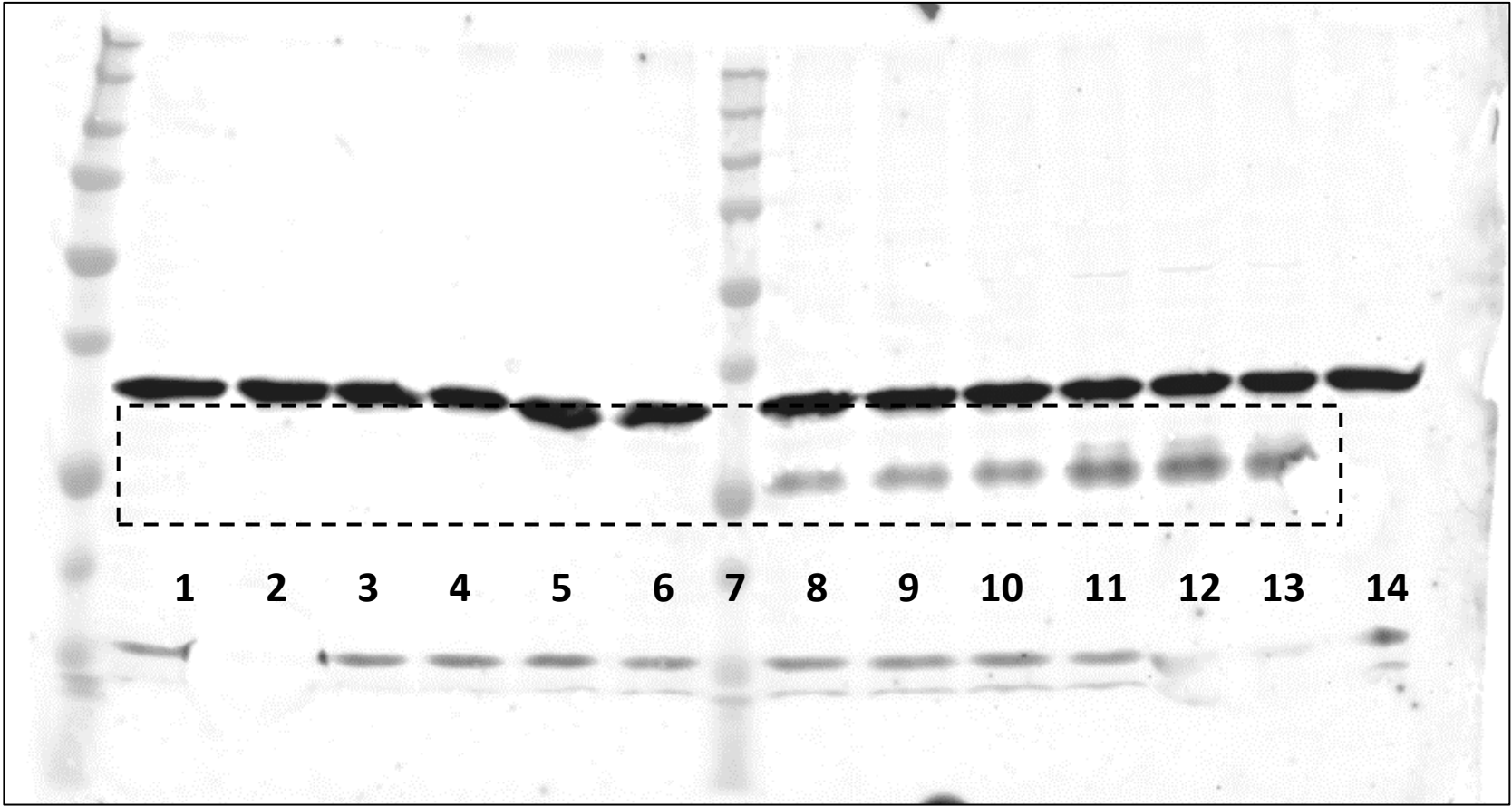
Anti GAPDH

Figure 5a upper panel

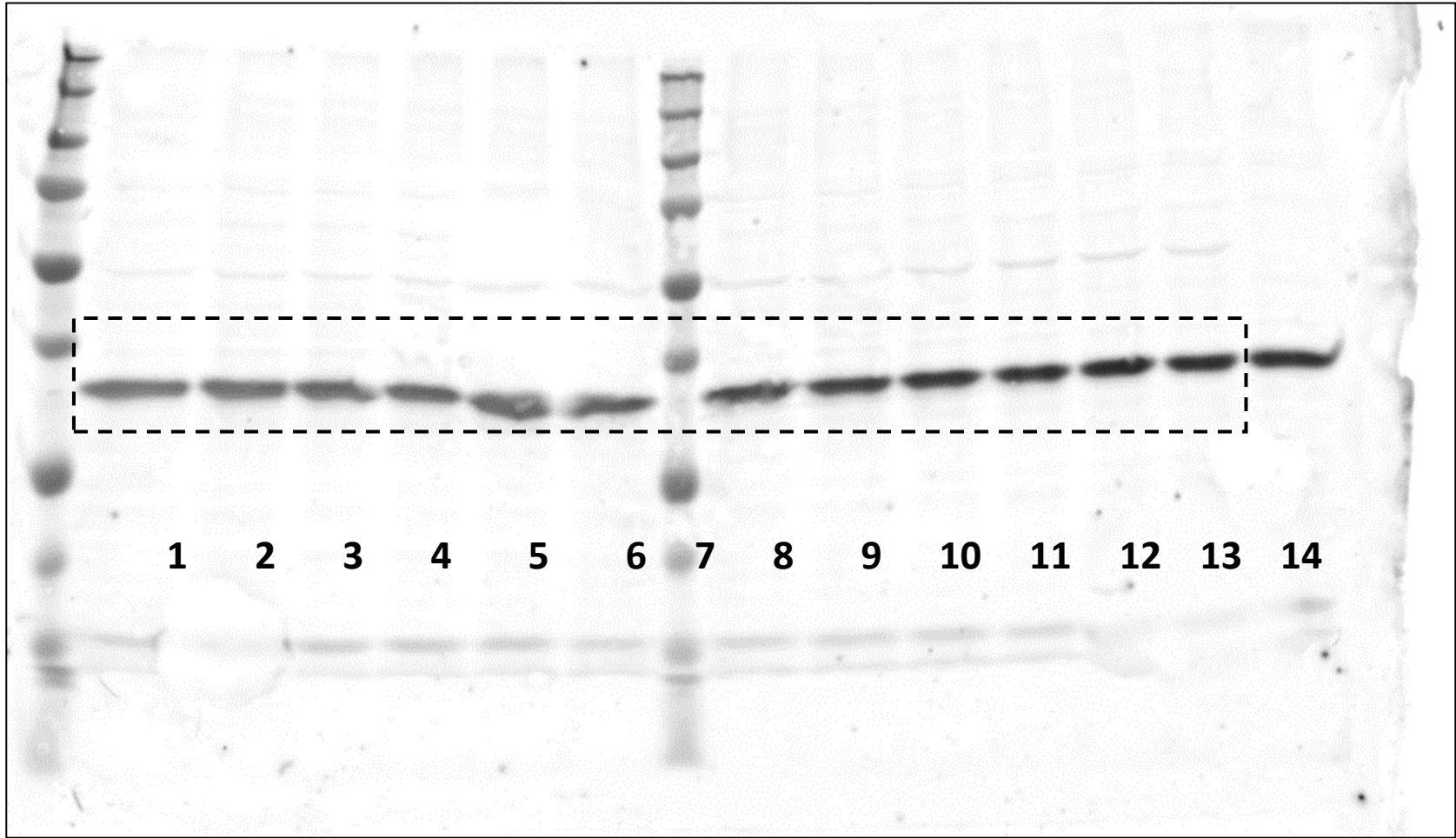


Anti TPH2

1-3: *Tph2*
4-6: *Tph2* Mg132
7: marker
8-10: *Tph2*+*Dnajc12*
11-13: *Tph2*+*Dnajc12* Mg132
14: Vector

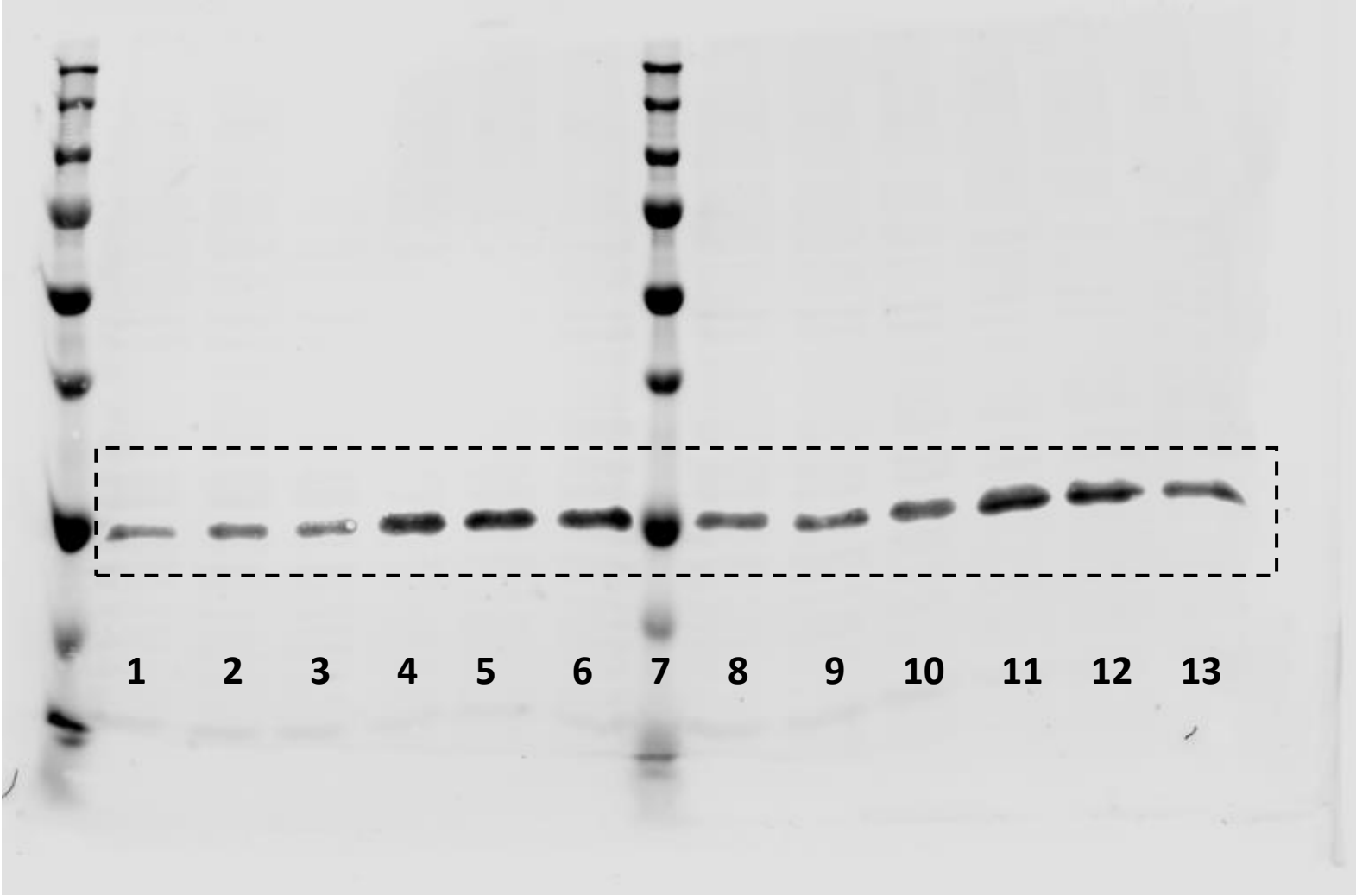


Anti DNAJC12



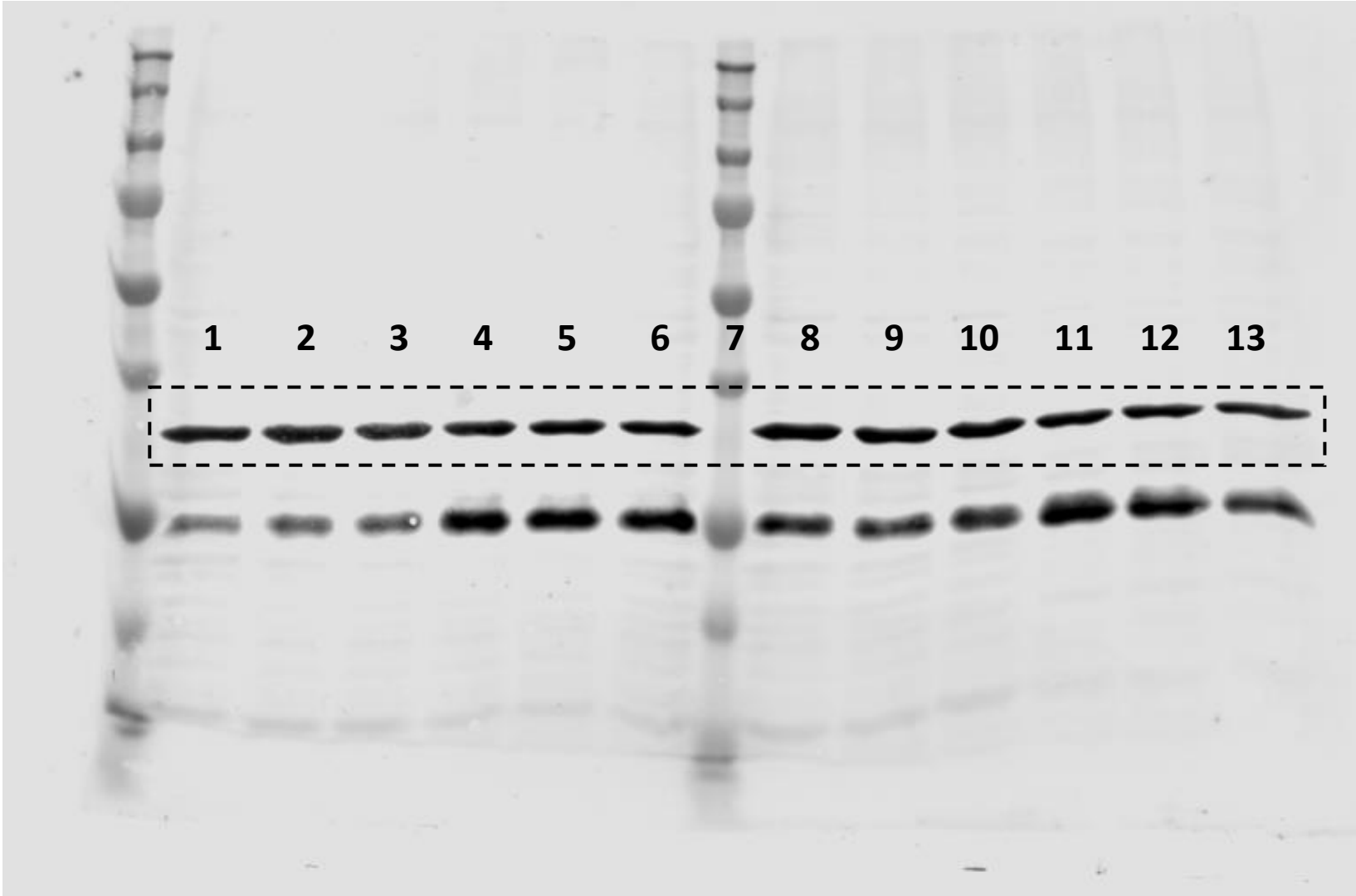
Anti GAPDH

Figure 5a lower panel



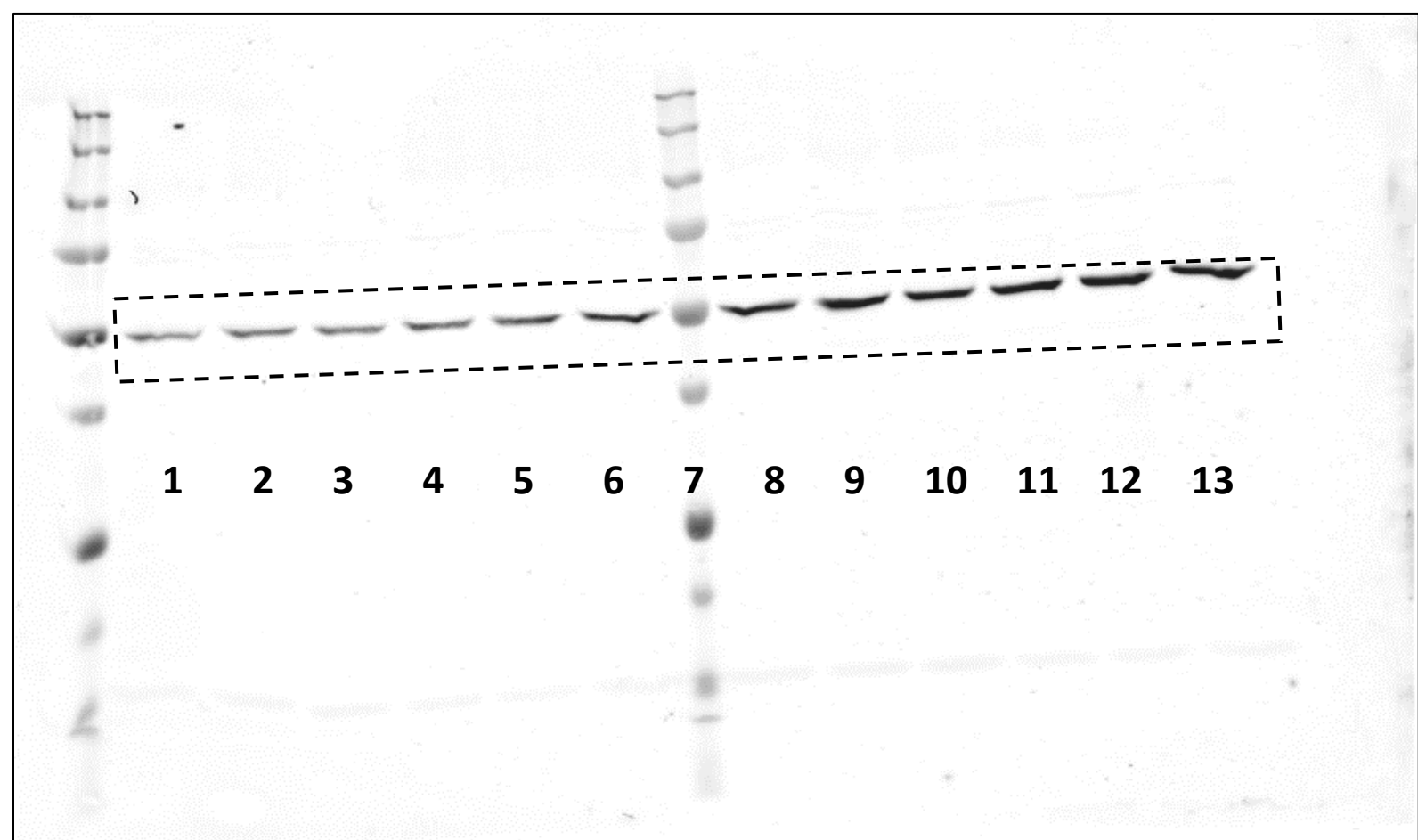
Anti DNAJC12

1-3: *Dnajc12*
4-6: *Dnajc12* Mg132
7: marker
9-10: *Tph2*+*Dnajc12*
11-13: *Tph2*+*Dnajc12* Mg132



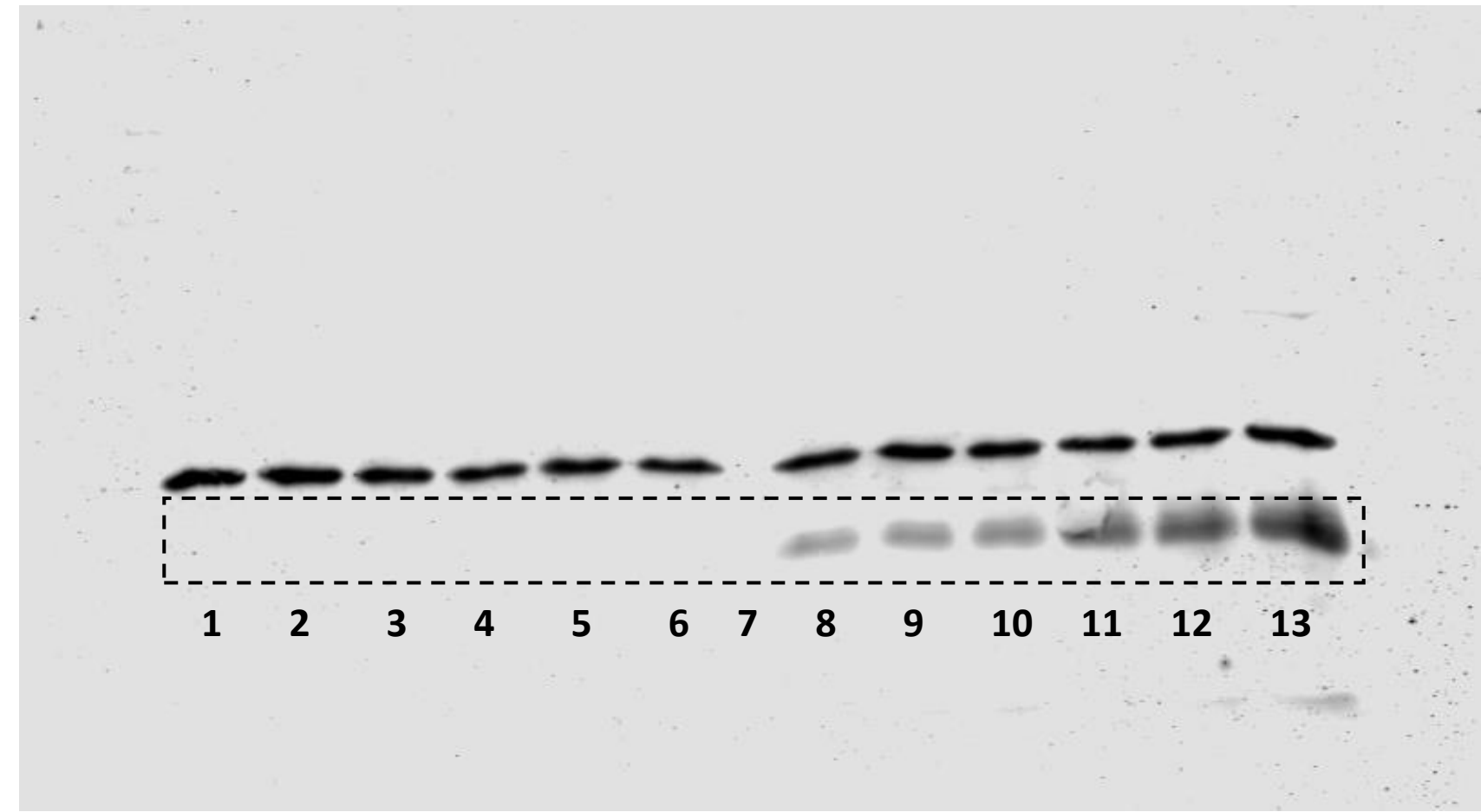
Anti GAPDH

Figure 5d upper panel

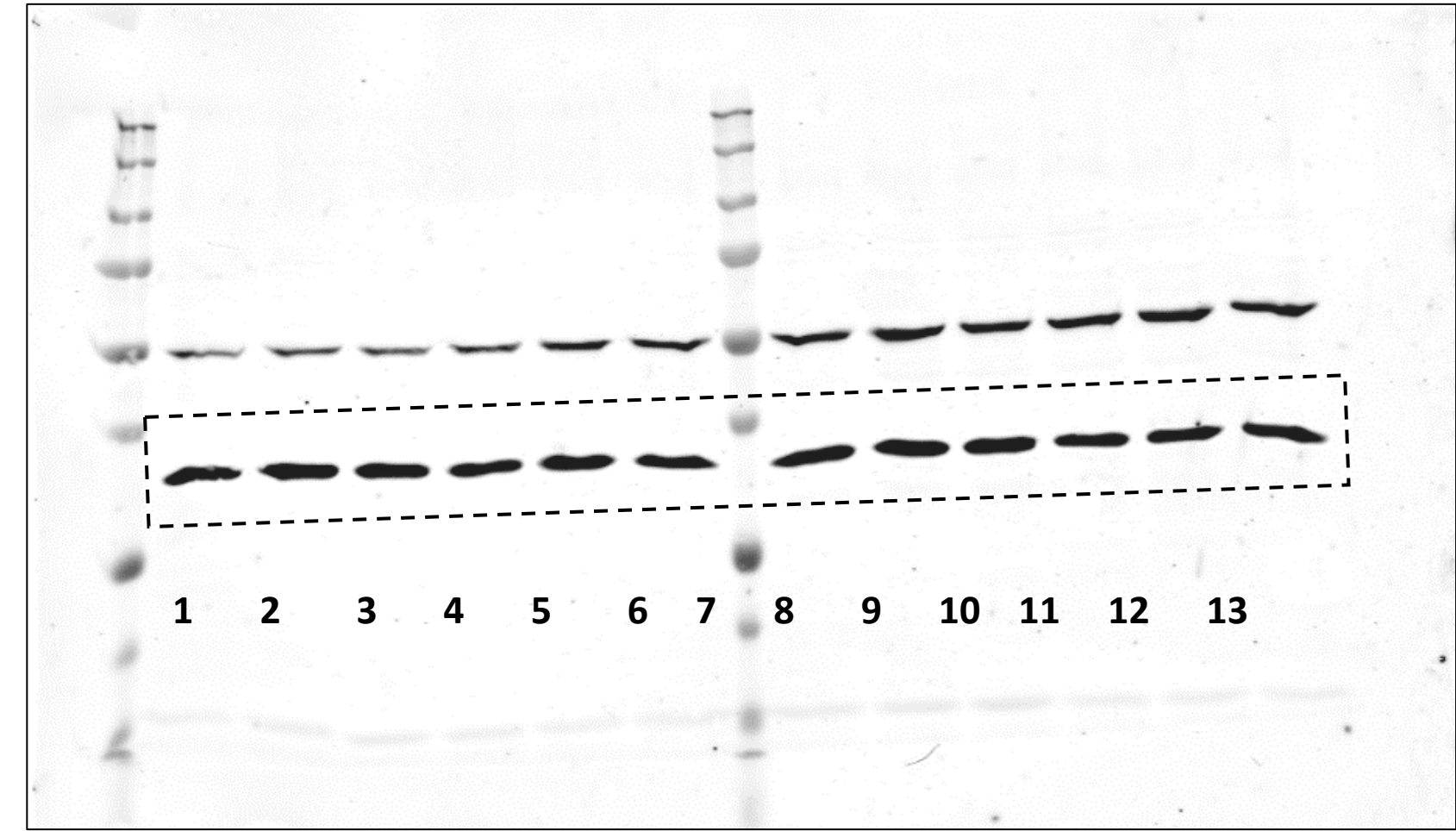


Anti TPH1

1-3: *Tph1*
4-6: *Tph1* Mg132
7: marker
9-10: *Tph1*+*Dnajc12*
11-13: *Tph1*+*Dnajc12* Mg132

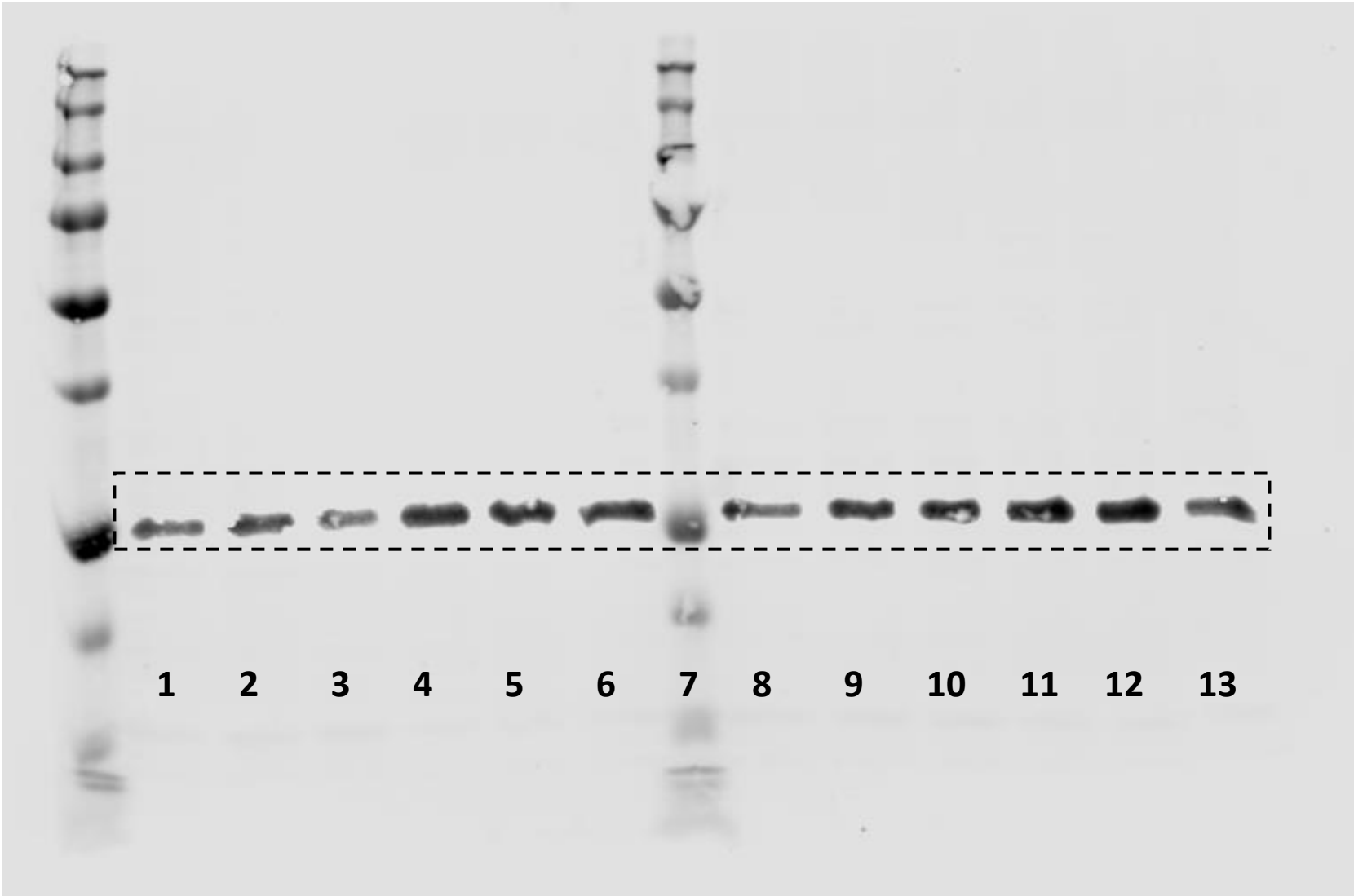


Anti DNAJC12



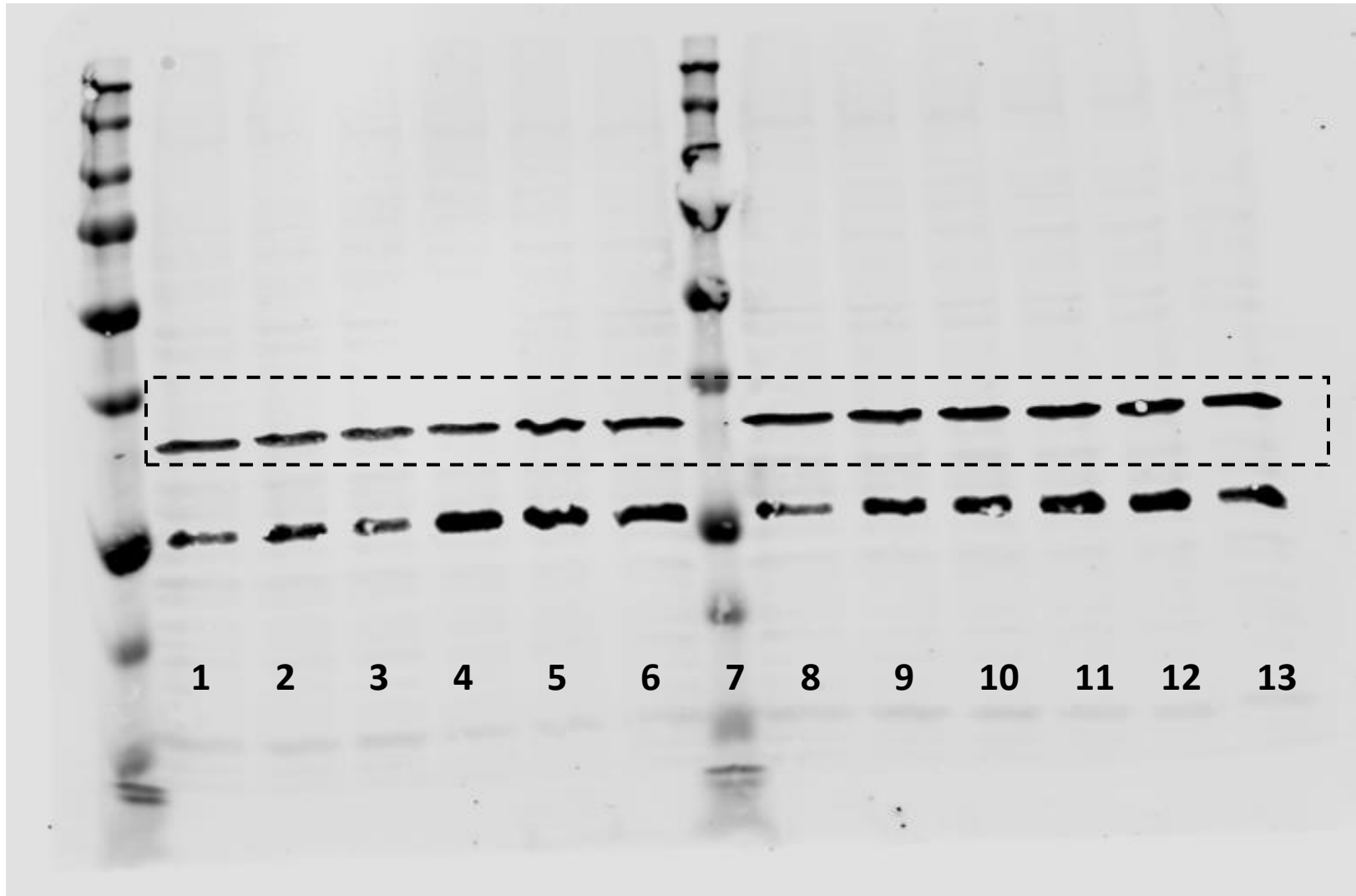
Anti GAPDH

Figure 5d lower panel



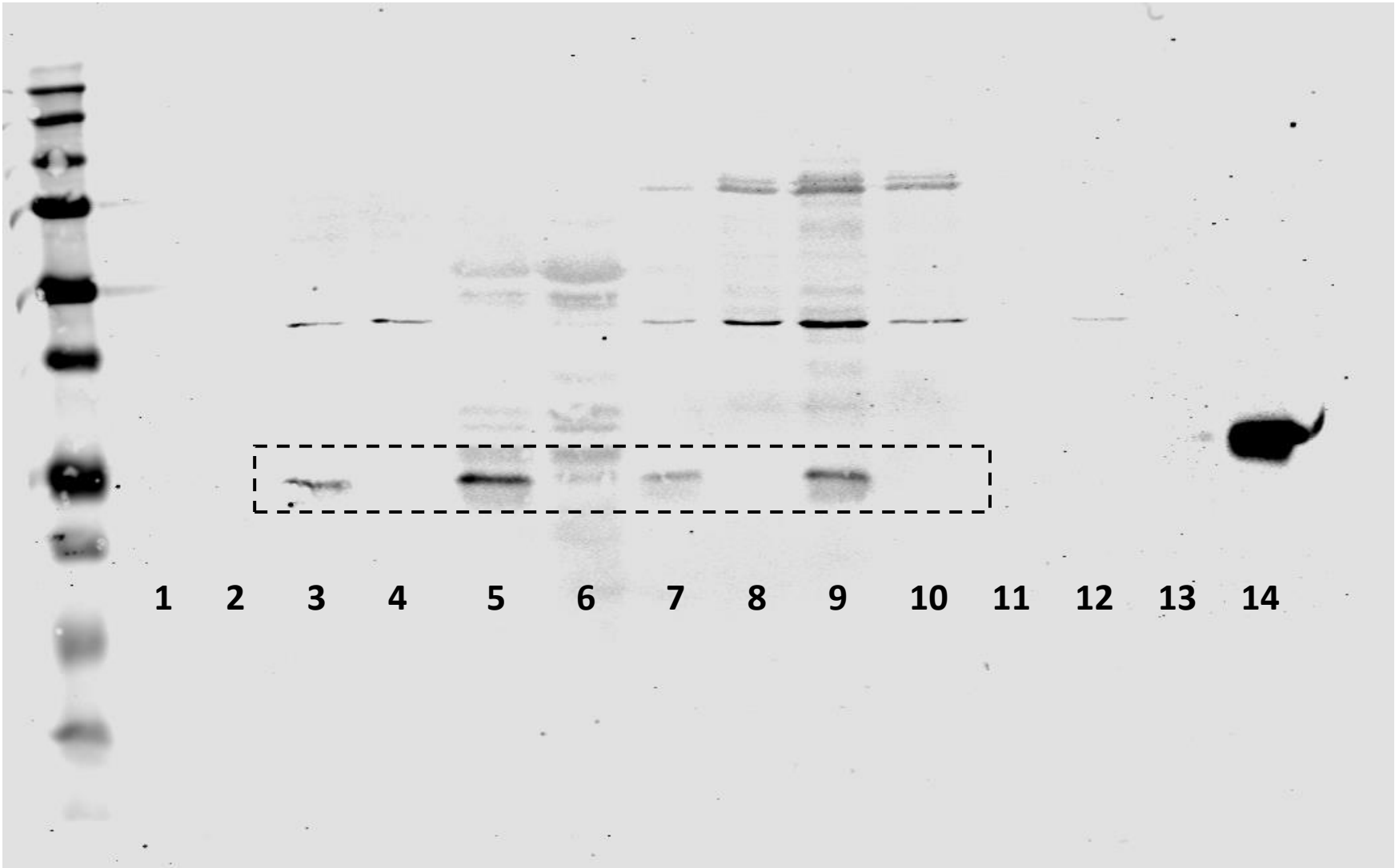
Anti DNAJC12

1-3: *Dnajc12*
4-6: *Dnajc12* Mg132
7: marker
9-10: *Tph1*+*Dnajc12*
11-13: *Tph1*+*Dnajc12* Mg132



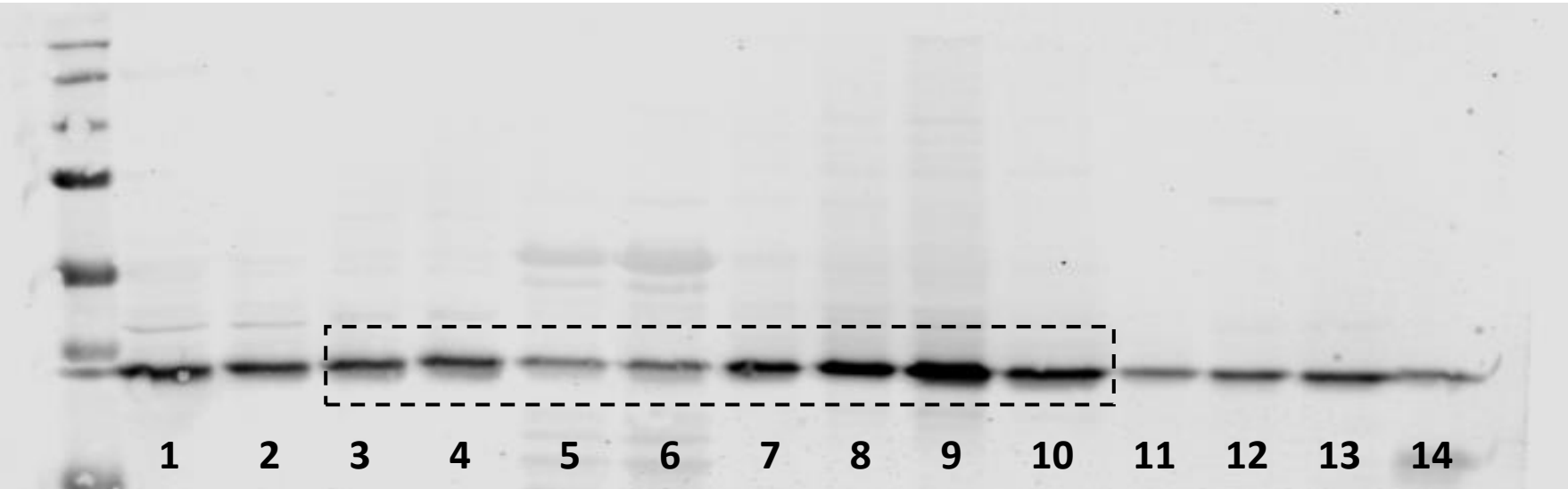
Anti GAPDH

Figure 6a



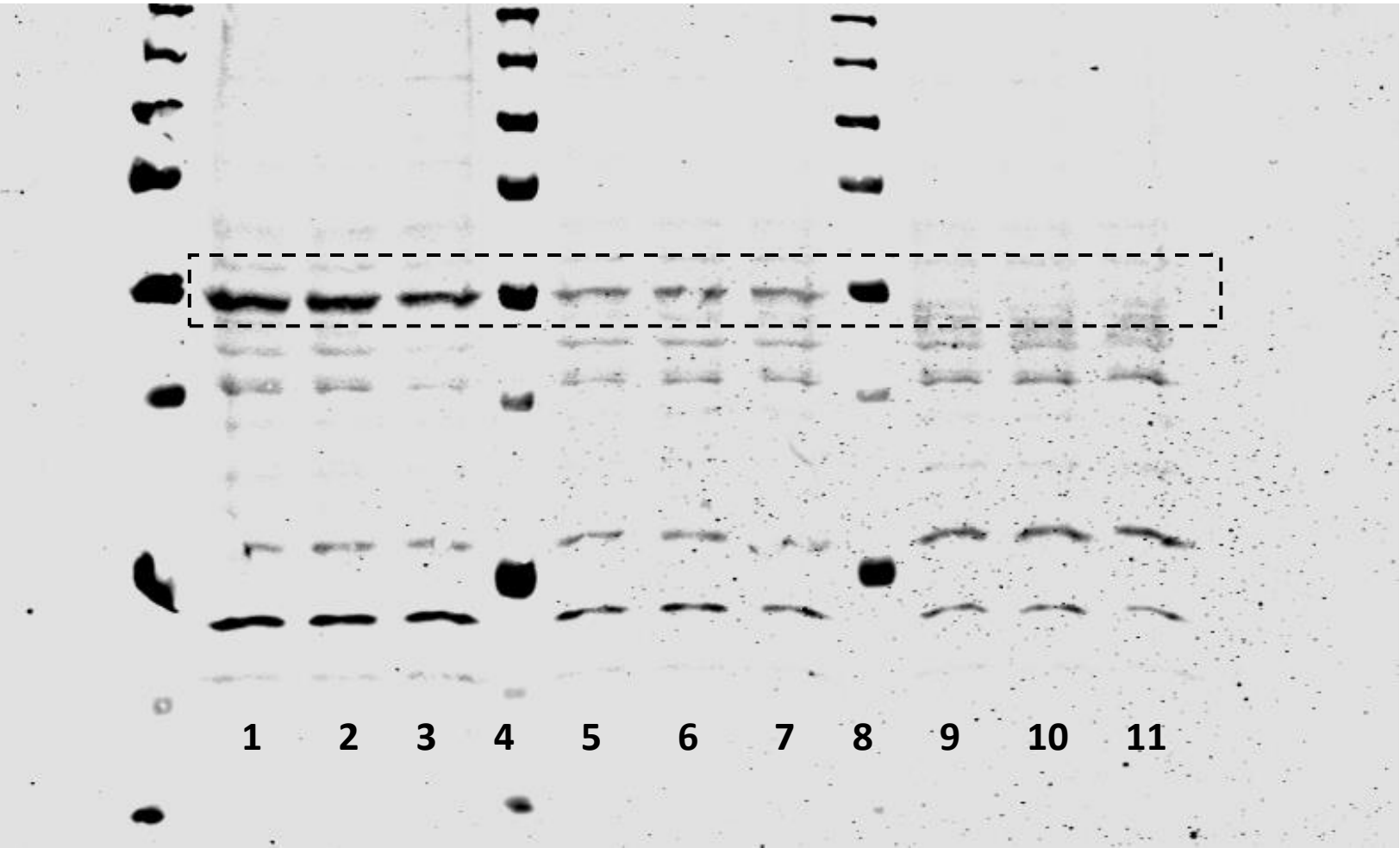
Anti DNAJC12

1: WT duodenum
2: DNAJC12 KO duodnum
3: WT kidney
4: DNAJC12 KO kidney
5: WT pancreas
6: DNAJC12 KO pancreas
7: WT raphe
8: DNAJC12 KO raphe
9: WT cerebellum
10: DNAJC12 KO cerebellum
11: WT pituitary,
12: WT adrenals
13: WT spleen
14: HEK cells transfected with *DNAJC12-FLAG*



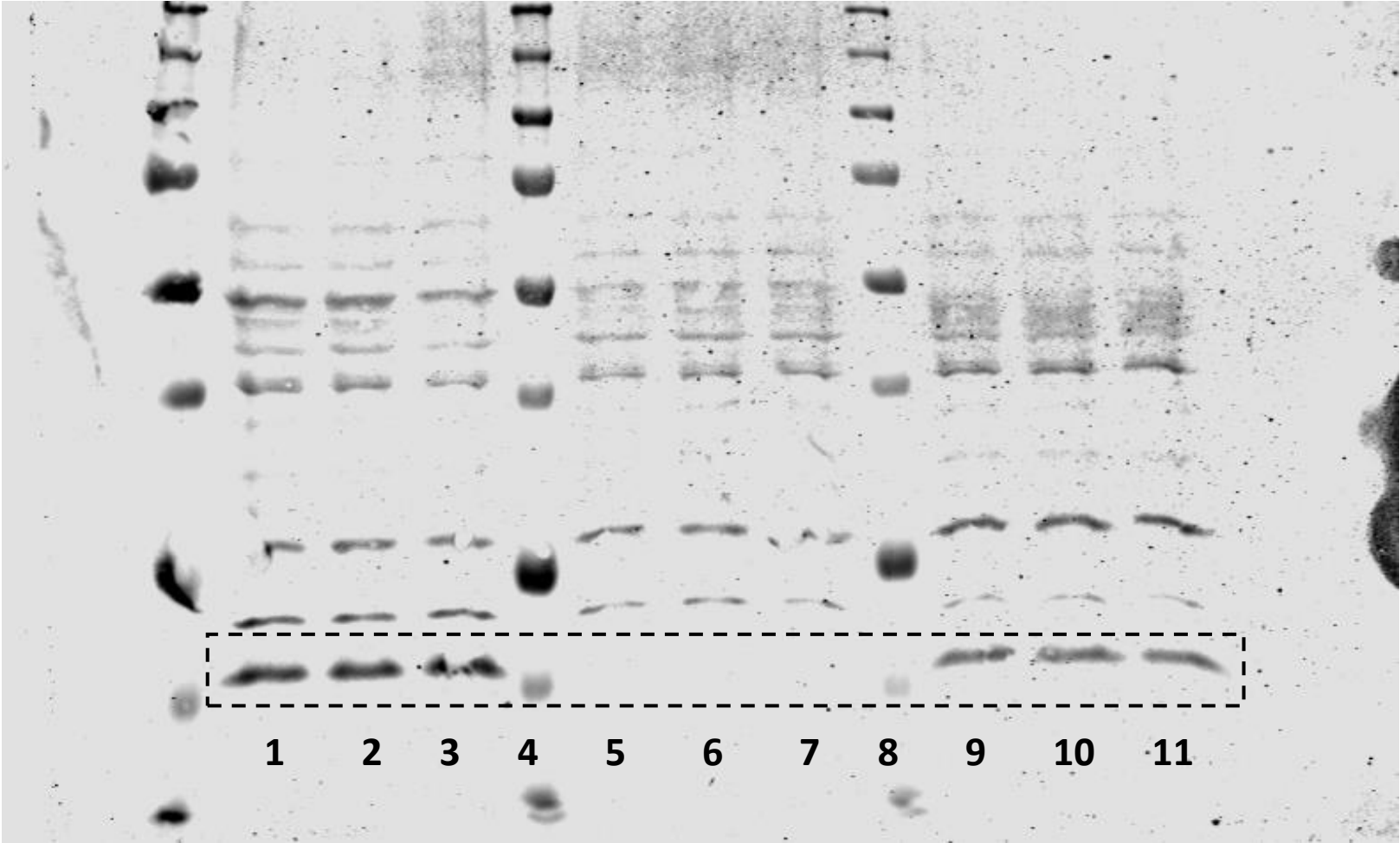
Anti GAPDH

Figure 6b

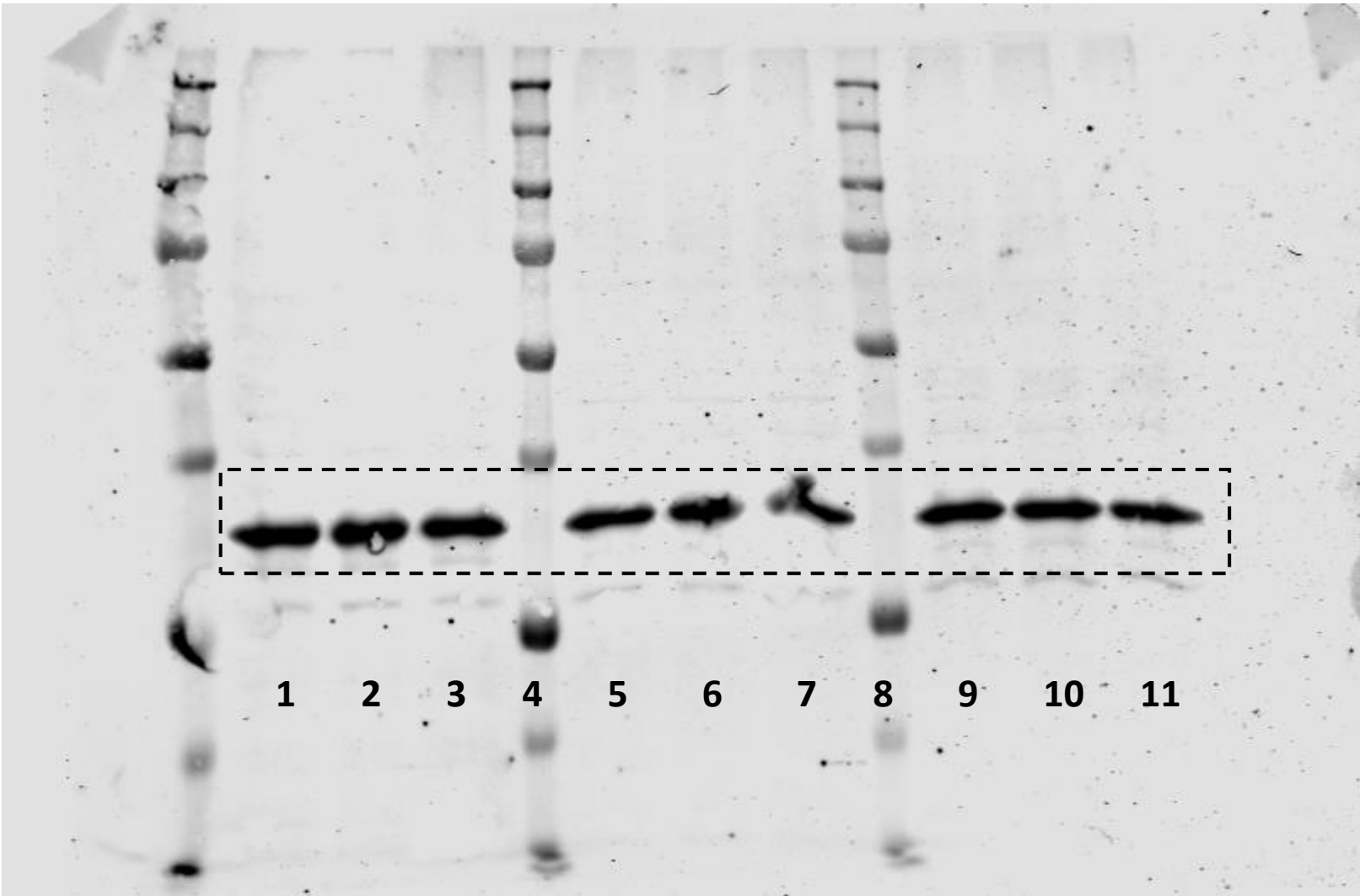


Anti TPH2

1-3: WT raphe
4: marker
5-7: DNAJC12 KO raphe
8: marker
9-11: TPH2 KO raphe

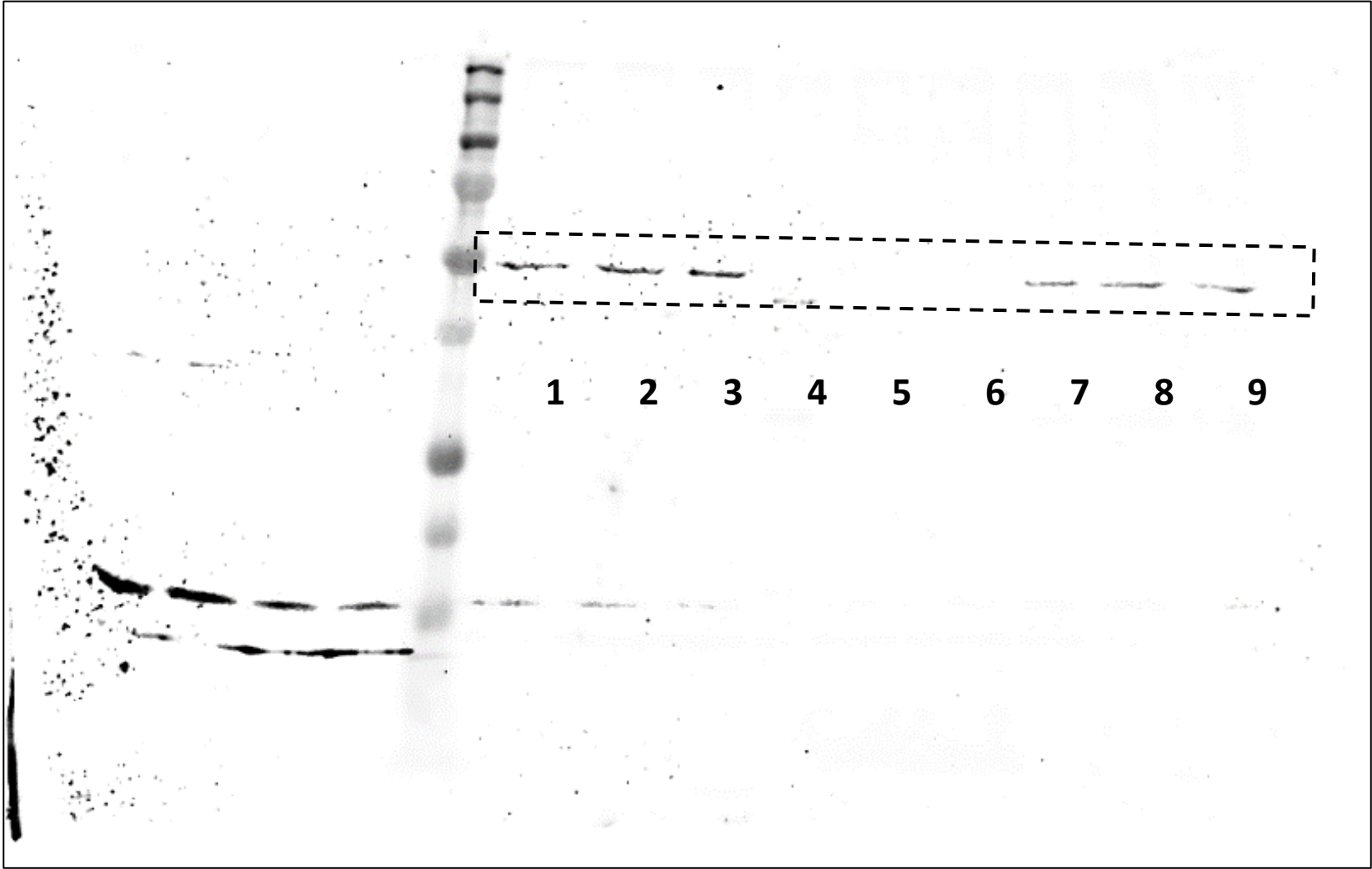


Anti DNAJC12



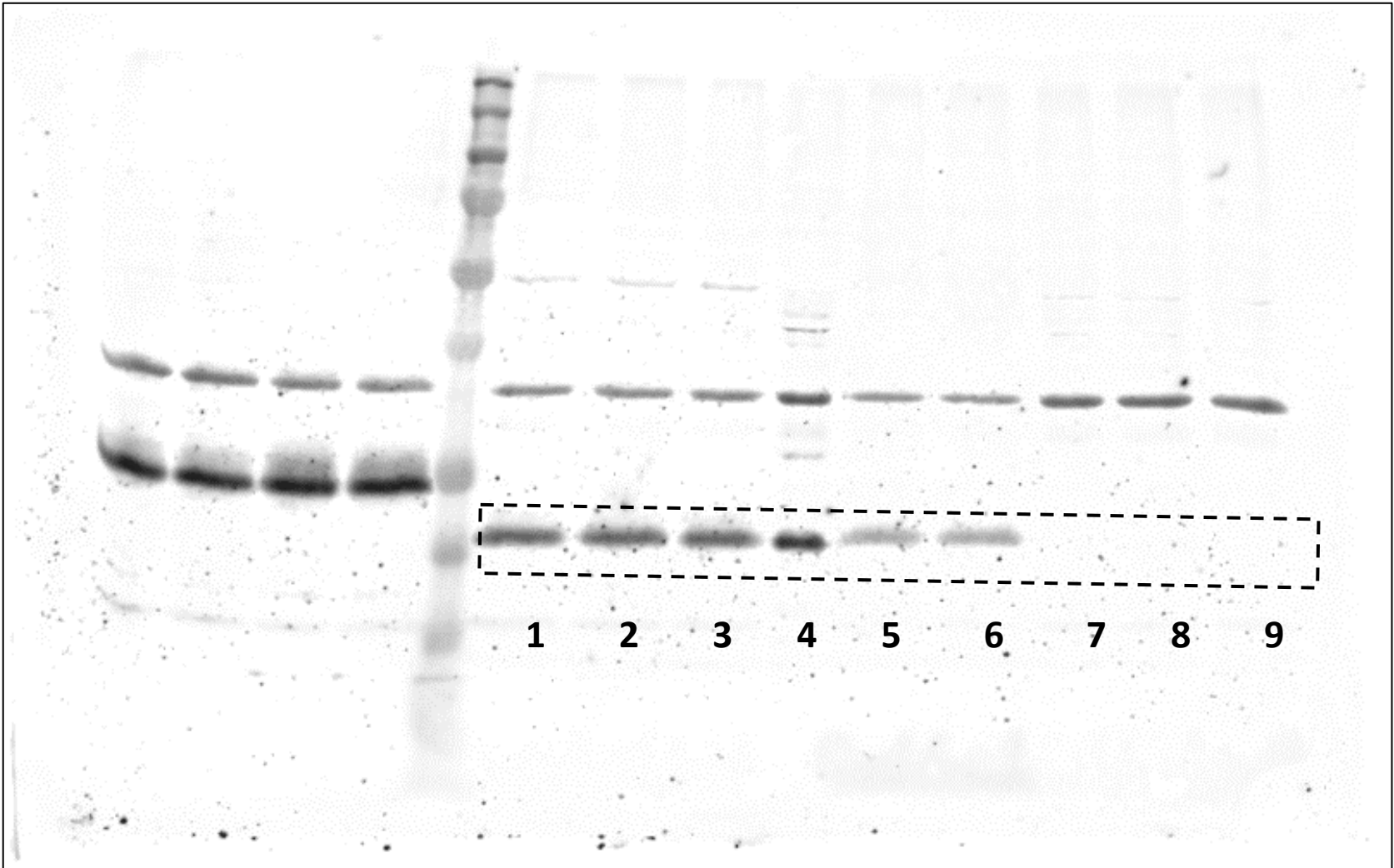
Anti GAPDH

Figure 6e

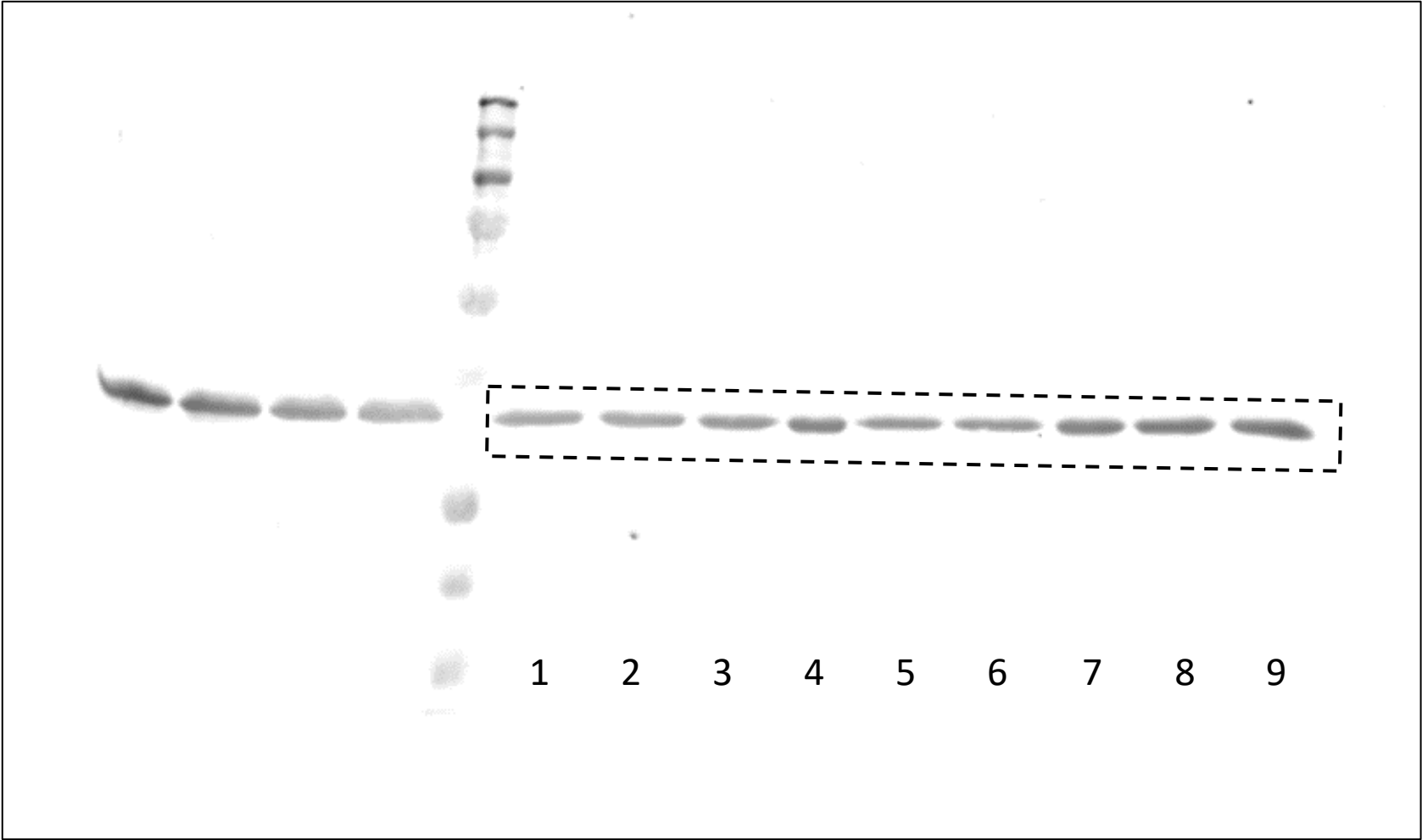


Anti TPH1

1-3: WT pineal
4-6: TPH1 KO pineal
7-9: DNAJC12 KO pineal

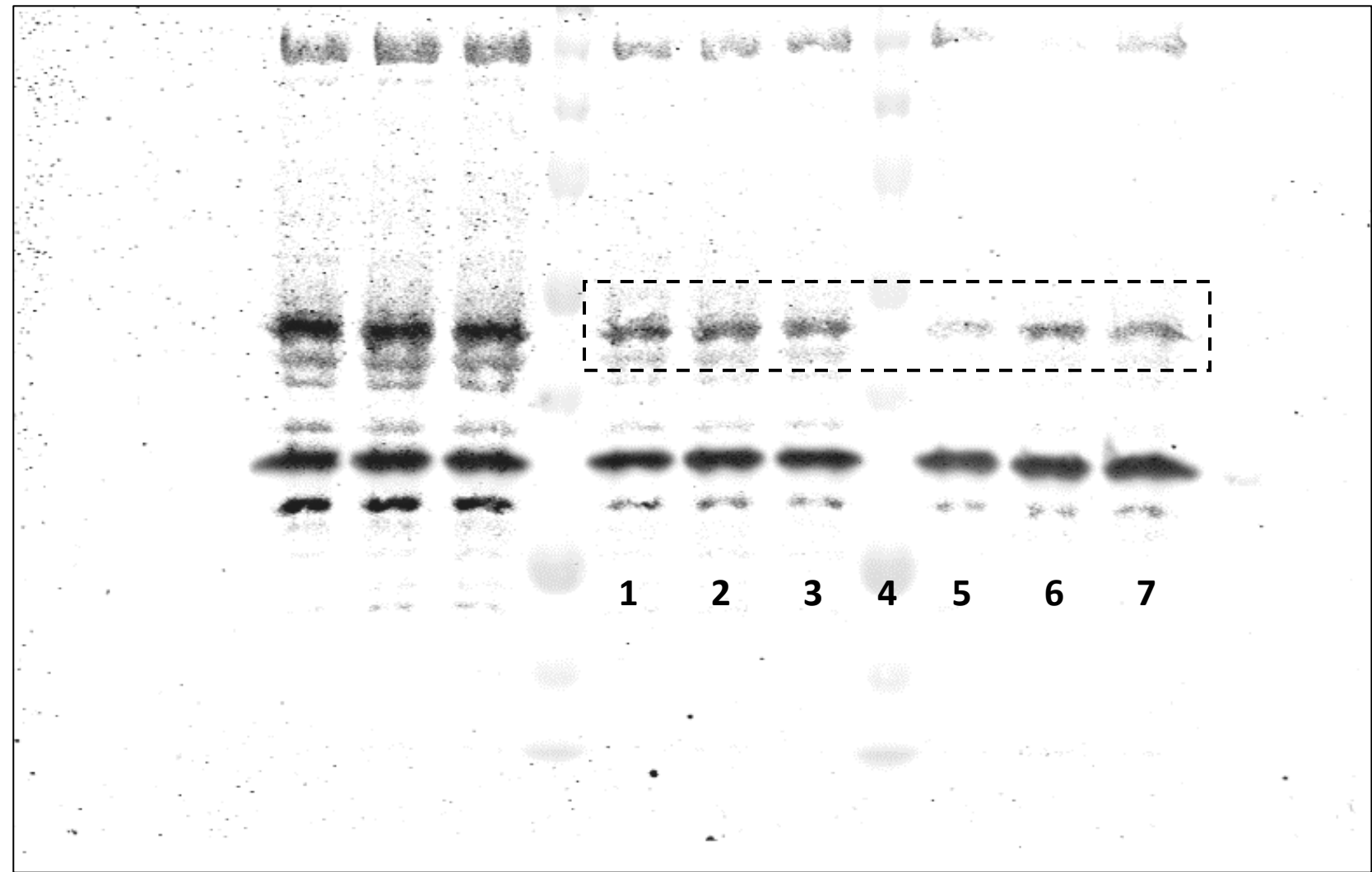


Anti DNAJC12



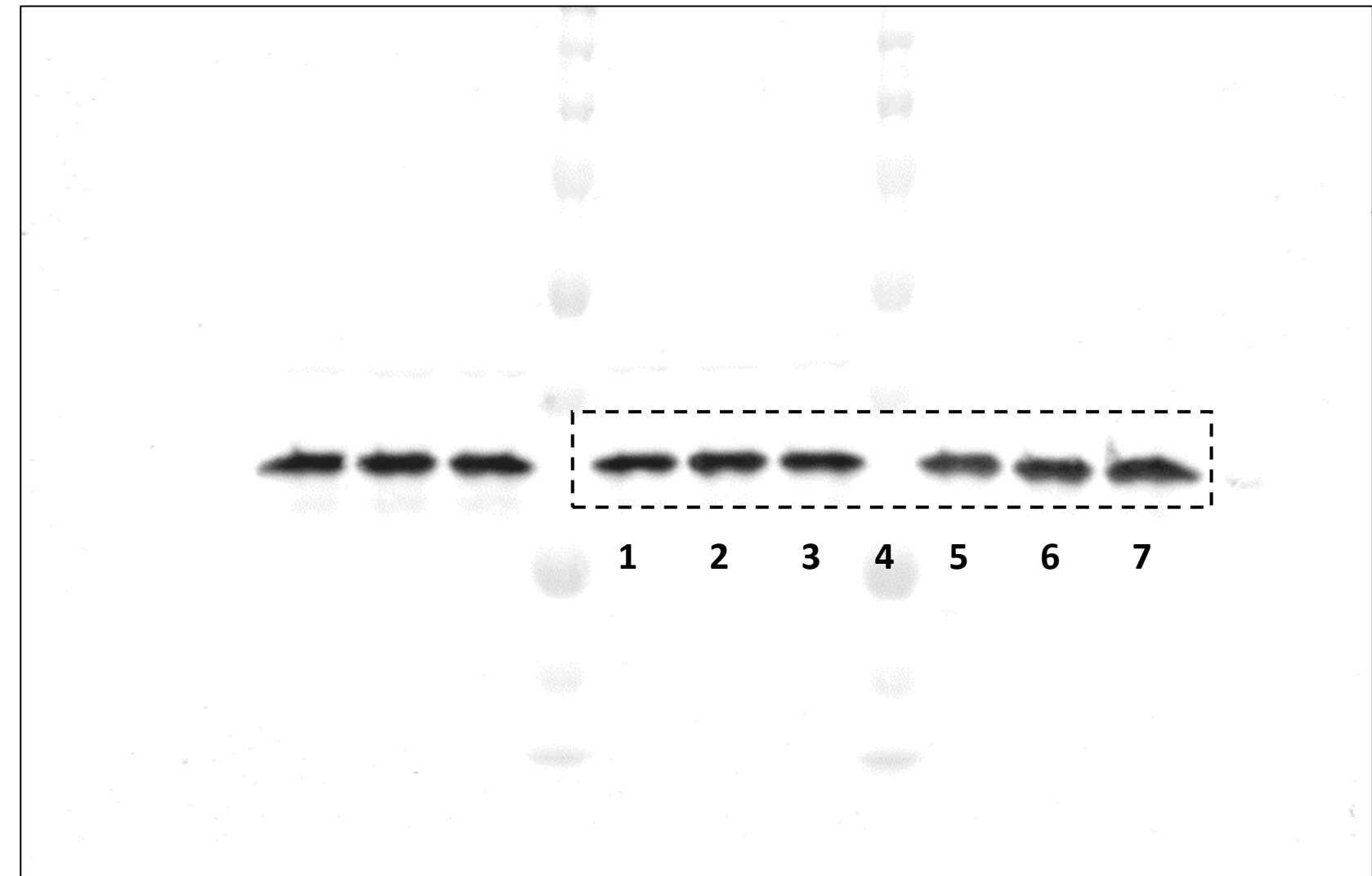
Anti GAPDH

Figure 8



Anti PAH

1-3: WT liver
4: marker
5-7: : DNAJC12 KO liver



Anti GAPDH