

Donor-derived cell-free DNA monitoring for early diagnosis of antibody-mediated rejection after kidney transplantation: a randomized trial

Aylin Akifova¹; Klemens Budde¹; Kerstin Amann², Maike Buettner-Herold², Mira Choi¹; Michael Oellerich³; Julia Beck⁴; Kirsten Bornemann-Kolatzki⁴; Ekkehard Schütz⁴; Friederike Bachmann¹; Fabian Halleck¹; Ellen von Hoerschelmann¹; Nadine Koch¹; Eva Schrezenmeier¹; Evelyn Seelow¹; Johannes Waiser¹; Bianca Zukunft¹; Kai-Uwe Eckardt¹; Jan Halbritter¹; Ralph Kettritz¹; Covadonga López Del Moral^{1,5}; Nils Lachmann⁶; Diana Stauch⁶; Matthias Niemann⁷; Danilo Schmidt⁸; Philip F. Halloran⁹; Bilgin Osmanodja¹

1 Department of Nephrology and Intensive Care, Charité - Universitätsmedizin Berlin, Berlin, Germany.

2 Department of Nephropathology, Institute of Pathology, University Hospital Erlangen, Friedrich-Alexander University Erlangen-Nuremberg, Erlangen, Germany.

3 Department of Clinical Pharmacology, University Medical Center Göttingen, Göttingen, Germany

4 Chronix Biomedical GmbH, Göttingen, Germany.

5 Valdecilla Biomedical Research Institute (IDIVAL), Santander, Spain.

6 Centre for Tumor Medicine, Histocompatibility & Immunogenetics Laboratory, Charité - Universitätsmedizin Berlin, Berlin, Germany.

7 PIRCHE AG, Berlin, Germany.

8 Business Division IT, Department of Research and Teaching, Charité - Universitätsmedizin Berlin, Berlin, Germany.

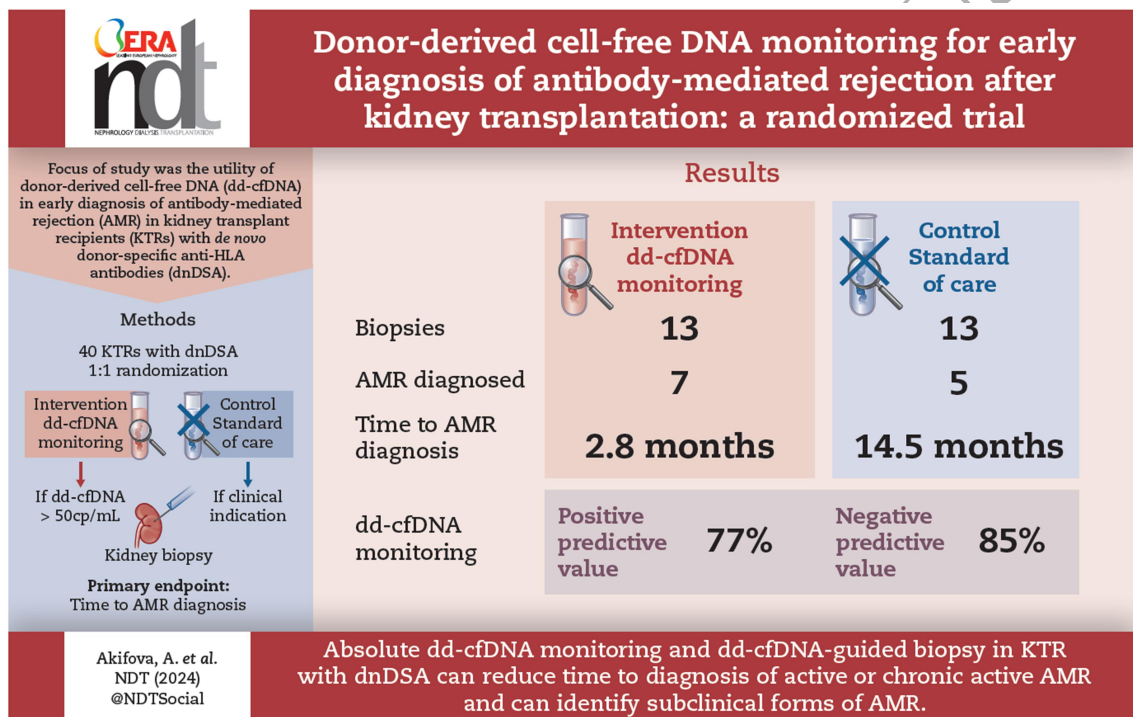
9 University of Alberta, Edmonton, AB, Canada.

Correspondence to:

Aylin Akifova; E-mail: aylin.akifova@charite.de

Running head: Dd-cfDNA monitoring for early diagnosis of AMR

GRAPHICAL ABSTRACT



ABSTRACT

Background and hypothesis. Donor-derived cell-free DNA (dd-cfDNA) shows good diagnostic performance for the detection of antibody-mediated rejection (AMR) in kidney transplant recipients (KTR). However, the clinical benefits of dd-cfDNA monitoring need to be established. Early diagnosis of AMR at potentially reversible stages may be increasingly important due to emerging treatment options for AMR.

We hypothesized that monitoring dd-cfDNA in KTR with de novo donor-specific anti-HLA antibodies (dnDSA) and performing kidney biopsy in case of increased dd-cfDNA may reduce time to AMR diagnosis in comparison to clinical indication biopsy.

Methods. In this diagnostic, single-center, open-label, randomized clinical trial, we assigned 40 KTR with prevalent dnDSA and estimated glomerular filtration rate ≥ 20 mL/min/1.73m², but without previous biopsy-proven AMR, to either dd-cfDNA-guided biopsy (intervention group) or clinician-guided biopsy (control group) over a 12-months period. In both groups, dd-cfDNA was assessed at inclusion and 1, 3, 6, 9, and 12 months. In the intervention group, dd-cfDNA >50 cp/mL indicated a biopsy. Biopsies for clinical indication could be performed at any point during the study period in both groups. A protocol biopsy was scheduled after 12 months for patients without dd-cfDNA-guided biopsy or clinical indication biopsy until study completion. The primary endpoint was time from study inclusion to diagnosis of active or chronic active AMR.

Results. 39/40 patients had functioning grafts at study completion. From these, 26 patients underwent biopsy, 13 in each group. AMR was diagnosed earlier in the intervention group than in the control group (median 2.8 months, IQR 1.7-5.3 vs. median 14.5 months, IQR 13.3-16.7, $p=0.003$). Longitudinal dd-cfDNA monitoring had 77% positive predictive value and 85% negative predictive value for AMR.

Conclusions. Dd-cfDNA-guided biopsy in KTR with prevalent dnDSA can reduce the time to AMR diagnosis and hereby expedite therapy initiation. (NCT04897438)

KEY LEARNING POINTS

What was known:

- Antibody-mediated rejection (AMR) leads to graft loss in kidney transplant recipients with de novo donor-specific anti-HLA antibodies (dnDSA)
- Donor-derived cell-free DNA (dd-cfDNA) detects AMR more accurately than routine biomarkers such as creatinine or urine albumin
- It is unknown how dd-cfDNA testing should be integrated into diagnostic pathways to improve clinically meaningful outcomes

This study adds:

- Dd-cfDNA-guided biopsy enables earlier diagnosis of AMR in patients with dnDSA compared to clinician-guided biopsy
- Dd-cfDNA-guided biopsy identifies subclinical AMR in stable patients with dnDSA

Potential impact:

- Early identification of patients with AMR at potentially reversible stages can lead to improved outcomes, especially due to emerging treatment options for AMR
- Dd-cfDNA can close the diagnostic gap between dnDSA-monitoring and diagnosis of AMR

Keywords: biomarkers, cell-free nucleic acids, graft rejection, kidney transplantation, randomized controlled trial

INTRODUCTION

Antibody-mediated rejection (AMR) is among the most frequent causes for graft loss following kidney transplantation.^{1,2} Non-adherence to immunosuppression, iatrogenic underexposure, previous rejection episodes, and donor-specific anti-HLA antibodies (DSA) are established risk factors contributing to the complex alloimmune response that ultimately leads to AMR.³

Both clinically significant and subclinical forms of AMR are associated with poor prognosis and are resistant to previously suggested treatment regimens.⁴⁻⁷ The current diagnostic approach cannot capture the clinically silent progression of AMR, which provides a potential reason for this therapeutic failure. Routine clinical parameters, such as creatinine and urine albumin-creatinine ratio (uACR), cannot distinguish between injury patterns, making allograft biopsy the best available, yet imperfect gold standard to verify rejection. Besides known limitations such as interobserver variability, error-prone sampling and the nonspecificity of histological lesions, the uncertainty about the appropriate biopsy timing is also of critical relevance.⁸⁻¹⁰ In particular, AMR detected in indication biopsies frequently shows signs of chronic rejection and irreversible fibrotic changes, making therapeutic interventions less likely to be efficacious.¹¹⁻¹³ Conversely, performing protocol biopsies in subclinical kidney transplant recipients (KTR) with DSA confirms AMR in about half of the cases, which makes it an imprecise and invasive alternative for early diagnosis that can still miss rejection on the molecular level.¹⁴⁻¹⁶

As novel therapeutic candidates, such as the CD38 monoclonal antibody felzartamab, showed very promising early results in phase 2 trials, redefining strategies for timely detection of AMR is essential to create an optimal intervention window and obtain more favorable outcomes.¹⁷

Testing for DSA is the fundamental diagnostic step in identifying KTR at risk for AMR. While screening for preexisting DSA with the crossmatch test prior to transplantation has become a standard approach, there is no uniformly accepted algorithm for de novo DSA (dnDSA) monitoring post-transplant.¹⁸ Since not all patients develop AMR after dnDSA occurrence, it is assumed that not all dnDSA are equally harmful. Despite some attempts to link certain antibody properties, such as mean fluorescent intensity (MFI), complement-binding capacity or IgG-subclasses to higher risk for AMR and more adverse outcomes, they are unable to decipher dnDSA pathogenicity, and thus remain of indefinite diagnostic value for routine monitoring.¹⁹⁻²² Moreover, dnDSA can undergo fluctuations, persist, or disappear over time,

which does not necessarily correlate with the clinical course.^{23,24} Thus, an additional tool that detects the onset of antibody-mediated damage could help to overcome these limitations and close the current diagnostic gap through longitudinal injury assessment.¹⁸

Donor-derived cell-free DNA (dd-cfDNA) is an emerging biomarker in transplantation that non-invasively detects graft pathologies with increased cellular damage, such as allograft rejection.^{25,26} Its short half-life and injury-dependent release lead to superior diagnostic performance compared to the current standard-of-care parameters, especially for distinguishing AMR from no rejection.²⁷⁻³¹ The successful validation of different methods and their increasing availability facilitate the integration of dd-cfDNA testing into clinical practice, but evidence-based implementation strategies are lacking.³²⁻³⁵

Instead of screening for AMR in large heterogeneous cohorts, we aimed to examine the potential clinical benefit of dd-cfDNA in a more concise cohort of KTR with prevalent dnDSA, but without previous biopsy after dnDSA occurrence, who have a high pre-test probability for AMR. We conducted an investigator-initiated, diagnostic, single-center, open-label, 1:1 randomized clinical trial to evaluate the influence of dd-cfDNA-guided kidney allograft biopsy (intervention group) in comparison with clinician-guided biopsy (control group) on the time to diagnosis of biopsy-proven AMR. Thus, we hypothesized that longitudinal dd-cfDNA monitoring combined with dd-cfDNA-guided biopsy can reduce the time to AMR diagnosis compared with clinician-guided biopsy in this specific group of patients.

MATERIALS AND METHODS

Trial design

The trial was conducted from June 17, 2021, to July 18, 2023, at the Department of Nephrology and Medical Intensive Care, Charité Universitätsmedizin Berlin (Germany). It was registered at ClinicalTrials.gov (NCT04897438) on May 18, 2021 and approved by the ethics committee of Charité (EA4/045/021; March 30, 2021). This study was conducted in accordance with the principles of the Declaration of Helsinki and the Declaration of Istanbul

as outlined in the 'Declaration of Istanbul on Organ Trafficking and Transplant Tourism'. All study participants provided written informed consent prior to study entry.

Participants

Adult KTR >180 days after kidney transplantation, with dnDSA against the most recent kidney transplant and an estimated glomerular filtration rate (eGFR) ≥ 20 mL/min/1.73m² were eligible to participate. Key exclusion criteria were multi-organ transplantations, kidney allograft biopsy after the detection of dnDSA, and increased bleeding risk. The complete inclusion and exclusion criteria are shown in Table 1 and the screening process is outlined in Figure 1.

Procedures

Study visits, including dd-cfDNA monitoring, were performed at study inclusion and after 1, 3, 6, 9, and 12 months in both groups. Study physicians informed patients and treating physicians about dd-cfDNA results for patients in the intervention group and withheld the information for patients in the control group until month 12. Absolute dd-cfDNA values >50 copies/mL indicated a kidney allograft biopsy in the intervention group. Additionally, treating physicians could perform kidney allograft biopsy at any point during the study period in both groups for clinical indication such as rising creatinine, worsening proteinuria, but no definite thresholds were specified in the study protocol. Twelve months after study inclusion, kidney allograft biopsy was scheduled per protocol for patients who had not undergone kidney allograft biopsy until that point. At every study visit, a complete laboratory workup including complete blood count, kidney function parameters, dipstick urine and uACR, liver function parameters, CRP, BK viremia and viremia, and cytomegalovirus PCR was performed as part of clinical routine. Detailed methods of HLA-typing and dnDSA detection are described in Supplemental Item 1.

Donor-derived cell-free DNA, histopathology, and Molecular Microscope Diagnostic System

Dd-cfDNA was collected at all study visits and immediately before biopsy, if the most recent measurement was >4 weeks ago. Each time, up to 16 mL of blood was drawn into two certified blood collection tubes (Streck Corp., Omaha, Nebraska) and shipped at ambient temperature to the processing laboratory within three days of collection. Dd-cfDNA was quantified using the droplet-digital PCR method as previously described and detailed in Supplemental Item 2.³² Test findings included both relative and absolute quantification of dd-cfDNA, with cutoffs of 0.5% and 50 copies/mL, as established in earlier validation trials.^{32,33} All biopsy specimens were read and interpreted during routine biopsy reporting according to the Banff 2019 classification by an experienced nephropathologist (K.A., M.B.-H.) who was unaware of the randomization status or the dd-cfDNA results.³⁶ Histological data were retrieved from the nephropathological reports. Along with conventional histopathological examination, additional analysis with the Molecular Microscope Diagnostic System (MMDx) was available for 23/26 biopsies.^{37,38} MMDx is a novel diagnostic tool using microarray technology to analyze the expression of various gene transcripts in allograft biopsies. For this purpose, an extra biopsy core was stored in RNALater (ThermoFisher Scientific, Henningsdorf, Germany) immediately after sample collection and shipped to the central laboratory Alberta Transplant Applied Genomics Center (ATAGC, University of Alberta, Edmonton, AB, Canada) at ambient temperature.^{37,38} RNALater is a non-toxic tissue storage reagent that rapidly permeates tissue and stabilizes and protects cellular RNA in situ in unfrozen specimens. For sensitivity analysis, all biopsies were reclassified according to the Banff 2022 classification by the study coordinator (B.O.) including the nephropathological reports and MMDx.³⁹

Outcomes

The primary endpoint was the time from study inclusion to diagnosis of active AMR (aAMR) or chronic active AMR (caAMR). Secondary endpoints included time from first dnDSA occurrence to the diagnosis of AMR, diagnostic test metrics (sensitivity, specificity, positive

predictive value, negative predictive value, AUC) of longitudinal dd-cfDNA monitoring using a prespecified absolute cutoff of 50 copies/mL, an intra-individual increase of >25%, and a combination of both decision rules for the diagnosis of AMR. Additionally, clinical endpoints such as patient survival, death-censored graft survival, severe infection (infection leading to death, hospitalization or organ failure), adverse events of kidney allograft biopsy, as well as laboratory values such as creatinine, eGFR (CKD-EPI 2021), uACR, and DSA MFI levels were recorded and analyzed (Supplemental Item 3).⁴⁰

Randomization

Patients were randomized 1:1 to dd-cfDNA-guided kidney allograft biopsy (intervention group) or clinician-guided biopsy (standard of care) over a period of 12 months. Randomization was stratified by time since the first occurrence of dnDSA (0–24 months vs. ≥25 months). A simple randomization sequence was generated separately for both strata and concealed using sequentially numbered opaque envelopes by staff unrelated to the study investigation. Study physicians enrolled the patients, and the study coordinator (B.O.) performed allocation after patients provided consent. Patients, treating physicians and study personnel were aware of allocation (unblinded). Patients and treating physicians were blinded for dd-cfDNA results in the control group, while patients and treating physicians were aware of dd-cfDNA results in the intervention group.

Statistical analysis

Sample size calculation is summarized in Supplemental Item 4. The demographics of the study participants are summarized as median and interquartile range (IQR) for continuous covariates or mean ± standard deviation (SD) for normally distributed parameters, and absolute and relative frequencies for categorical parameters. Statistically significant differences in the time from study inclusion or first dnDSA occurrence to AMR diagnosis between the two treatment arms were assessed using Wilcoxon test. Diagnostic test metrics were assessed using ROC analysis with prespecified decision thresholds (50 copies/mL and

25% increase to the 12 months mean dd-cfDNA) for all patients with kidney allograft biopsy as the gold standard. All secondary endpoint analyses were conducted in an exploratory fashion and no adjustment for multiple testing was performed. Correlation analysis was performed using Pearson correlation. Statistical tests were 2-tailed and a p-value <0.05 was considered statistically significant. Data analyses were performed using R, version 4.3.0 (The R Foundation for Statistical Computing, Vienna, Austria).

RESULTS

Participants and clinical outcomes

We recruited 40 KTR with prevalent dnDSA, but without previous kidney allograft biopsy after first occurrence of dnDSA (median age, 54.8y; IQR, 47.8-66.9; 33 [82.5%] men; Table 2). Demographic and clinical baseline characteristics were generally similar across treatment groups (Table 2), except for HLA mismatch grade that was higher in the control group (median, 4; IQR, 3-4; vs. median, 3; IQR, 2-3; p=0.048).

By the end of the study, 39/40 patients had functioning grafts, and one patient in the control group died unrelated to the study. No cases of BK viremia occurred. Four patients (two in each group) experienced adverse events due to transplant biopsy (one hematuria, one bladder tamponade, and two AV fistulas), none of which led to persistent morbidity or impairment of kidney function. Clinical outcomes during the study did not differ between both groups as shown in Supplemental Item 5. Of the 39 patients with a follow-up measurement of dnDSA MFI, seven patients (18%) had an MFI reduction to less than 50% of the baseline MFI, and two patients (5%) had an increase in MFI >100%, while the majority of 30 patients (77%) had persistent dnDSA MFI. After study completion, all patients were followed for 24 months after baseline. Treatment and 24 months follow-up data for patients with biopsy-proven AMR were summarized as Supplemental Table 1.

From 39 patients that completed the last visit, 16 had increased absolute dd-cfDNA from which 13 (81%) underwent kidney biopsy (intervention group: 7/8 – all for increased dd-

cfDNA; control group: 6/8 – all for protocol biopsy). From the remaining 23 patients without increased dd-cfDNA, 13 (57%) underwent kidney biopsy (intervention group: 6/12 - 3 for clinical indication, 3 for protocol biopsy; control group: 7/11 - 2 for clinical indication, 5 for protocol biopsy). In total, 26/39 (67%) patients with complete follow-up underwent kidney biopsy, and 13/39 (33%) withdrew consent for protocol biopsy. Three patients, who refused protocol biopsy had increased dd-cfDNA that was indicative of underlying AMR (Supplemental Figure 1).

In total, 12/26 (46.2%) patients that underwent biopsy had biopsy-proven AMR. From these, four (33%) had stable kidney function (uACR \leq 300mg/g and max. creatinine increase \leq 0.3mg/dL) and were classified as subclinical AMR. All patients with subclinical AMR had increased levels of dd-cfDNA (range 57-161 copies/mL), and increased molecular AMR scores (range 0.48-0.8; reference range $<$ 0.2).

Primary endpoint: Time from study inclusion to diagnosis of antibody-mediated rejection

The primary endpoint was assessed only in patients with biopsy-proven AMR. In the intervention group, 7 patients had biopsy-proven AMR, which was detected after a median of 2.8 months (IQR 1.7-5.3) after study inclusion. In the control group, 5 patients had biopsy-proven AMR, which was detected after a median of 14.5 months (IQR 13.3-16.7) after study inclusion. The time from study inclusion to biopsy-proven AMR was significantly shorter in the intervention group than in the control group ($p=0.003$).

Figure 2 summarizes the time to AMR diagnosis for each patient and indicates the timing of the first increase in dd-cfDNA measurement for each patient. The delays observed from first increase in dd-cfDNA to biopsy in the intervention group as well as the delays from twelve months to protocol biopsy in the control group were caused by need for scheduling the biopsy, or concurrent medical diagnoses. A sensitivity analysis indicates that ideal timing of biopsies (using the date of first increased dd-cfDNA or date of clinical indication biopsy in the intervention group, and the date of clinical indication biopsy or 12 months after inclusion in

the control group) would still have resulted in a significant difference in time to diagnosis ($p=0.0035$, Supplemental Item 6). As indicated in Figure 2, dd-cfDNA-guided kidney biopsy could have reduced the time to AMR diagnosis by more than 6 months in 3/5 patients (60%).

Secondary endpoints

Time from de novo DSA occurrence to diagnosis of antibody-mediated rejection

No difference was found between time since first dnDSA occurrence and AMR diagnosis between intervention and control group (median, 22.1 months; IQR, 12.1-90.1 vs. median, 120.2 months; IQR, 54.1-142.7; $p=0.25$).

Biopsy results and dd-cfDNA results

The biopsy results obtained per group and biopsy indication are provided in Table 3, together with the dd-cfDNA results at the time of biopsy for each diagnosis. Dd-cfDNA was higher in AMR in comparison to CN1 toxicity or unremarkable histopathology both in absolute ($p=0.004$, and $p=0.007$, respectively) and relative ($p=0.045$, and $p=0.002$, respectively) quantification.

Individual longitudinal absolute dd-cfDNA measurements are shown in Supplemental Figure 2A for patients with AMR and Supplemental Figure 2B for patients with non-AMR histopathological diagnoses.

At baseline, 7/12 patients (58.3%) with AMR had dd-cfDNA above 50 copies/mL, and 0/14 patients without AMR. Over the study period, 6 additional patients had increases in absolute dd-cfDNA >50 copies/mL, 3 of whom had AMR in the biopsy. Regarding relative quantification of dd-cfDNA, 21/26 patients had dd-cfDNA above the cutoff of 0.5% over the study period, only 12 of whom had AMR in the biopsy (Supplemental Figure 3).

Diagnostic test metrics of donor-derived cell-free DNA vs. routine biomarkers

Longitudinal dd-cfDNA monitoring with an absolute cutoff of 50 copies/mL had following test metrics for the detection of AMR in DSA+ patients: AUC, 0.92; sensitivity, 0.83; specificity, 0.79; PPV, 0.77; NPV, 0.85 (Table 4). Using intra-individual increases in absolute dd-cfDNA

or combining an absolute cutoff with an intra-individual increase did not improve diagnostic test metrics (Supplemental Item 7, Supplemental Tables 2-4).

Relative quantification did not differ from absolute quantification in terms of AUC (0.91 vs. 0.92, $p=0.86$), but resulted in lower specificity and higher sensitivity when using the prespecified cutoff of 0.5% (sensitivity, 1.0; specificity, 0.36; PPV, 0.57; NPV, 1.00; Supplemental Table 5). Routine biomarkers such as uACR, creatinine, and DSA MFI showed poor diagnostic test metrics for detection of AMR (Supplemental Item 8, Tables 5 and 6, Supplemental Tables 6-8)

Correlation of histopathology, Molecular Microscope Diagnostic System, and donor-derived cell-free DNA

After log-transformation to adjust for skewing, mean absolute dd-cfDNA showed strong correlation ($R=0.8$, $p<0.001$, Figure 3A) with the molecular AMR score (antibody-mediated rejection probability classifier, ABMRpm), the total rejection score ($R=0.79$, $p<0.001$, Supplemental Figure 4A) and the inflammation score ($R=0.74$, $p<0.001$, Supplemental Figure 4B). It showed moderate correlation with the AKI score ($R=0.52$, $p=0.01$, Supplemental Figure 4C), which is based on injury-repair response-associated transcripts (IRRATs), but no significant correlation with the fibrosis score ($R=0.31$, $p=0.15$, Supplemental Figure 4D) or the TCMR score ($R=0.26$, $p=0.23$, Supplemental Figure 4E), the latter of which was due to absence of molecular TCMR with all scores <0.1 . Furthermore, mean absolute dd-cfDNA showed a moderate correlation with histological AMR features such as microvascular inflammation (g+ptc) ($R=0.64$, $p<0.001$, Figure 3B). Correspondingly, we found higher molecular AMR scores in patients undergoing biopsy due to increased dd-cfDNA levels than in those undergoing protocol biopsies.

AMR biopsies detected in the intervention group showed higher molecular AMR probability than those in the control group (ABMRpm: median, 0.92; IQR, 0.81-0.96 vs. median, 0.52; IQR, 0.31-0.61; $p=0.03$), while there was no significant difference in histological activity assessed by activity index (g+ptc+C4d+v) or MVI score (g+ptc) between both groups

(median 4, IQR 3-5 vs. median 4, IQR 3-4; $p=0.45$; median 3, IQR 3-4 vs. median 3, IQR 3-3; $p=0.60$). There was no difference in Early AMR transcripts between intervention and control group in AMR biopsies (median, 0; range, 0-0.33 vs. median, 0; range, 0-0.82; $p=0.91$). (Supplemental Item 9)

Banff classification 2022

After reclassification of kidney biopsies according to Banff 2022 classification including MMDx, 2 patients could be classified as (probable) AMR, who have previously been classified as non-AMR (case details in Supplemental Item 10). After accounting for these changes, there was still a significant difference in time to AMR diagnosis between intervention and control group (median, 2.9 months; IQR, 2.1-6.2 vs. median, 14.4 months; IQR, 13.5-16.2; $p<0.001$). The test characteristics of longitudinal dd-cfDNA monitoring improved as follows: AUC, 0.96; sensitivity, 0.86; specificity, 0.92; PPV, 0.92; NPV, 0.85 (Supplemental Table 9).

DISCUSSION

We had hypothesized that longitudinal dd-cfDNA monitoring and dd-cfDNA-guided biopsy can reduce the time to AMR diagnosis in patients with prevalent dnDSA, but without previous biopsy after dnDSA occurrence. Our study shows that AMR diagnosis is made significantly earlier in patients that were randomized to dd-cfDNA-guided biopsy compared to those randomized to clinician-guided biopsy, which supports this hypothesis. Furthermore, we observed that absolute dd-cfDNA was increased in several patients with subclinical AMR. Our findings underscore the latest results from the ProActive study, a prospective, observational registry study, which has shown that dd-cfDNA was significantly elevated 5 months before histological diagnosis of AMR, with 85% of biopsies being for cause.⁴¹

To our knowledge, this is the first randomized clinical trial to investigate the potential benefit of dd-cfDNA monitoring after kidney transplantation. While early diagnosis is not beneficial as long as efficacious therapies for AMR are lacking, this might change with emerging candidate drugs such as CD38 targeting agents, which showed promising results for the treatment of AMR.¹⁷ Consequently, dd-cfDNA-guided early diagnosis may become increasingly important, since timely therapeutic intervention could significantly change the course of AMR by preventing chronic irreversible damage and thereby improve outcomes.

We also confirmed the high sensitivity and specificity of dd-cfDNA for AMR as observed in previous studies. However, we found a higher PPV of 77% compared to the 12-61% reported in earlier cohorts.^{27,33,34,42} This is as anticipated regarding the selection of dnDSA positive patients and, consequently, higher pre-test probability for AMR. Importantly for clinical practice, dd-cfDNA detected significantly more patients with AMR than routine biomarkers, such as serum creatinine or urine albumin, which had low AUC similar to previous studies.³¹ Likewise, indicators of alloimmune response, such as PIRCHE-II and dnDSA-MFI (including MFI sum and maximum MFI of the immunodominant DSA), were inferior to dd-cfDNA in distinguishing AMR.

Another strength of our study is that it demonstrated the diagnostic accuracy of both absolute and relative dd-cfDNA, providing notable evidence for the relevance of the quantification method. AUC did not differ between absolute and relative dd-cfDNA levels; however, we observed important differences in the dynamics of each course that need to be discussed. Serial assessment of absolute dd-cfDNA showed increased sensitivity for AMR compared to a single measurement at study inclusion, since several patients with AMR, despite normal baseline dd-cfDNA levels, showed strong increases over time, supporting the need for longitudinal monitoring. Although specificity was reduced with longitudinal assessment, increases in three non-AMR patients still indicated therapy-requiring biopsy results. For relative quantification, the results should be interpreted cautiously because we observed false-positive elevations during the study period in a high proportion of KTR

without evidence of AMR or other injuries in the subsequent biopsy. This is reflected by the low PPV (0.57) for relative quantification and justifies previously raised concerns that dd-cfDNA monitoring might increase the number of non-informative biopsies.⁴³ In view of these critical observations, our interpretation is that the prespecified cut-off of 0.5% for relative dd-cfDNA may not be ideal for patients in the late post-transplant period. This uncertainty regarding the cutoff for relative quantification has been raised previously by Schütz et al. and could be explained by a decline in the levels of recipient cfDNA over time, which leads to an apparent increase in relative dd-cfDNA.⁴⁴ Additionally, relative quantification is more error prone due to fluctuations in the recipients cfDNA than absolute quantification of dd-cfDNA, which should also be noted.⁴⁵

It is important to note that test metrics of dd-cfDNA improved when biopsies were reclassified according to the latest Banff 2022 classification. This can be explained by additional AMR diagnoses based on molecular diagnostics and the strong correlation between absolute dd-cfDNA levels and molecular AMR transcripts in MMDx, which we demonstrated in agreement with previous studies.⁴⁶⁻⁴⁸ From a clinical perspective, dd-cfDNA elevation can help to confirm suspected AMR in cases of ambiguous histology by triggering additional MMDx analysis, while decrease in dd-cfDNA can indicate therapy response, as demonstrated in the felzartamab trial.¹⁷

Limitations

This was a single-center, open-label study with a small sample size, and every third participant did not undergo kidney allograft biopsy by the end of the observation period. In some cases, biopsy was delayed due to the need to schedule the biopsy, or concurrent medical diagnoses. Also, there were no prespecified decision thresholds for routine biomarkers that led to clinical indication biopsy. The randomization resulted in higher HLA-mismatch grade in the control group, which could potentially lead to worse outcomes in the control group. However, all patients included in the study already had dnDSA at the time of study inclusion, which limits the importance of HLA-mismatch.

Only one biopsy showed TCMR, which showed discrepancy between MMDx and histology, and no biopsy showed co-occurrence of TCMR and AMR, which is an otherwise common entity in cross-sectional studies of kidney allograft biopsies. Thus, we were unable to evaluate the performance of dd-cfDNA either in the case of mixed rejection or in distinguishing between the two rejection types. Additionally, advanced transplant age in this cohort reduced the likelihood of early post-transplant graft dysfunction, such as ischemia-reperfusion injury, delayed graft function, and infection. This could potentially increase the diagnostic performance due to the absence of alternative reasons for increased dd-cfDNA.^{49,50} Other injury patterns that could potentially interfere with dd-cfDNA, such as BKVAN, were not present in our cohort.⁵¹

CONCLUSION

Dd-cfDNA monitoring using absolute quantification and dd-cfDNA-guided biopsy in KTR with prevalent dnDSA can reduce the time to diagnosis of active or chronic active AMR in comparison to clinician-guided biopsy and can identify subclinical forms of AMR. Confirmation in larger multicenter studies including patients with incident dnDSA is needed.

DATA AVAILABILITY STATEMENT

Deidentified, individual participant data underlying the results presented in the manuscript will be available for researchers, who provide a reasonable request to the corresponding author at aylin.akifova@charite.de immediately following publication.

ACKNOWLEDGEMENTS

We wish to thank all the patients and their support persons, as well as the staff from the units that participated in the study.

FUNDING

Laboratory testing was sponsored by Oncocyte.

AUTHORS' CONTRIBUTIONS

B.O. conceived of the presented idea. K.B., M.C., and M.O. were involved in study design. A.A., B.O., and K.B. conducted the study. F.B., K.B., M.C., J.H., E.v.H., N.K., R.K., B.O., Ev.Sch., Ev.Se., J.W., and B.Z., performed study investigations. J.B. and K.B.-K. performed the laboratory testing. N.L., D.St., and C.L.D.M. provided HLA testing. K.A. and M.B.-H. performed the histopathological analyses. P.F.H. provided MMDx analysis. M.N. and D.Sch. provided PIRCHE-II scores. B.O. and A.A. performed the data analysis. A.A. and B.O. wrote the manuscript in consultation with K.B., M.O., and Ek.Sch. All authors have read and agreed to the final version of the manuscript.

CONFLICT OF INTEREST STATEMENT

The authors of this manuscript have conflicts of interest to disclose. A.A. received travel support from Chiesi. K.B. received grants from Alexion, Astellas, Astra Zeneca, Chiesi, CSL Behring, MSD, Otsuka, Stada, and Takeda, consulting fees from Aicuris, Alexion, Astellas, AstraZeneca, Bayer, Bristol-Myers Squibb, Carealytics, CareDx, Chiesi, CSL Behring, Fresenius, Hansa, HiBio, MSD, Natera, Neovii, Paladin, Pfizer, Pirche, Sanofi, Stada, Takeda, Veloxis, Vifor, and Xenothera, honoraria from Astellas, Astra Zeneca, Chiesi, Fresenius, MSD, Paladin, Sanofi, and Takeda, travel support from Astra Zeneca, Chisi, HiBio, MSD, Neovii, Paladin, Stada, Takeda, and Veloxis, participated in the advisory boards of Aicuris, Alexion, Astellas, Astra Zeneca, Bristol Myers-Squibb, Carealytics, CareDx, Chiesi, CSL Behring, HiBio, MSD, Natera, Neovii, Paladin, Pfizer, Stada, Takeda, Veloxis, and Vifor, and has fiduciary roles at Deutsche Transplantationsgesellschaft and Eurotransplant. K.A. received honoraria from Novartis, Otsuka, Vifor, GSK, Stadapharma, Astra Zeneca, and Alexion, payment for expert testimony and participation in an advisory board for Novartis, and hold stocks from Novartis, Pfizer, and Merck. M. B-H. received grants from Deutsche Forschungsgemeinschaft (TRR 374C2, TRR221Z01) and honoraria

for lectures or articles from Pfizer, Sanofi, Springer, Thieme, and Novartis. M.O. acts as a consultant to Oncocyte. J.B., K.B-K., and Ek.Sch. are employees of Chronix Biomedical GmbH, a subsidiary of Chronix Biomedical Inc. (an Oncocyte company), which holds intellectual property rights (EP 3004388B1, EP3201361B1 and US10570443B2). Ek. Sch., J.B., and K. B.-K. hold stocks from Oncocyte. F.H. received grants from MSD, Hansa Pharma, and Chiesi, consulting fees from Orifarm, honoraria from Hansa Pharma and Sanofi, travel support by Hansa Pharma, and participates an advisory board for TolerogenixX GmbH. Ev. Sch. received grants from the Else-Kröner-Fresenius-Stiftung and Deutsche Forschungsgemeinschaft, consulting fees from Novartis, Honoraria from Astra Zeneca and GSK, travel support from Chiesi, and is part of the DGfN program committee. K.-U. E. received grants from Amgen, Astra Zeneca, Bayer, Evotec, and Vifor, consulting fees from Akebia, Astra Zeneca, Bayer, Otsuka, and Retrophin, and is member of an advisory board for Astra Zeneca. J.H. received grants from Deutsche Forschungsgemeinschaft (HA 6908/4-1x). R.K. received grants from Deutsche Forschungsgemeinschaft (KE576/10-1, SFB1365), honoraria from med update and Vifor Pharma, and participates in advisory boards for Insmad Incorporated, and Boehringer Ingelheim. C.L.D.M. received a research grant from IDIVAL-Valdecilla (Santander, Cantabria, Spain). M.N. works for PIRCHE AG, which develops and operates the PIRCHE web service. P.F.H. received grants and consultation fees from Natera and funding from Thermo Fisher Scientific, has a licensing agreement with Thermo Fisher Scientific, and received consulting fees from Natera and Argenx BV. B.O. received travel reimbursement from Oncocyte. The remaining authors have nothing to disclose.

REFERENCES

1 Sellarés J, de Freitas DG, Mengel M, Reeve J, Einecke G, Sis B, Hidalgo LG, Famulski K, Matas A, Halloran PF. Understanding the causes of kidney transplant failure: the dominant role of antibody-mediated rejection and nonadherence. *Am J Transplant.* 2012 Feb;12(2):388-99. doi: 10.1111/j.1600-6143.2011.03840.x. Epub 2011 Nov 14. PMID: 22081892.

2 Mayrdorfer M, Liefeldt L, Wu K, Rudolph B, Zhang Q, Friedersdorff F, Lachmann N, Schmidt D, Osmanodja B, Naik MG, Duettmann W, Halleck F, Merkel M, Schrezenmeier E, Waiser J, Duerr M, Budde K. Exploring the Complexity of Death-Censored Kidney Allograft Failure. *J Am Soc Nephrol.* 2021 Jun 1;32(6):1513-1526. doi: 10.1681/ASN.2020081215. Epub 2021 Apr 21. PMID: 33883251; PMCID: PMC8259637.

3 Wiebe C, Gibson IW, Blydt-Hansen TD, Pochinco D, Birk PE, Ho J, Karpinski M, Goldberg A, Storsley L, Rush DN, Nickerson PW. Rates and determinants of progression to graft failure in kidney allograft recipients with de novo donor-specific antibody. *Am J Transplant.* 2015 Nov;15(11):2921-30. doi: 10.1111/ajt.13347. Epub 2015 Jun 10. PMID: 26096305.

4 Böhmig GA, Eskandary F, Doberer K, Halloran PF. The therapeutic challenge of late antibody-mediated kidney allograft rejection. *Transpl Int.* 2019 Aug;32(8):775-788. doi: 10.1111/tri.13436. Epub 2019 May 7. PMID: 30955215; PMCID: PMC6850109.

5 Moreso F, Crespo M, Ruiz JC, Torres A, Gutierrez-Dalmau A, Osuna A, Perelló M, Pascual J, Torres IB, Redondo-Pachón D, Rodrigo E, Lopez-Hoyos M, Seron D. Treatment of chronic antibody mediated rejection with intravenous immunoglobulins and rituximab: A multicenter, prospective, randomized, double-blind clinical trial. *Am J Transplant.* 2018 Apr;18(4):927-935. doi: 10.1111/ajt.14520. Epub 2017 Oct 24. PMID: 28949089.

6 Eskandary F, Regele H, Baumann L, Bond G, Kozakowski N, Wahrmann M, Hidalgo LG, Haslacher H, Kaltenecker CC, Aretin MB, Oberbauer R, Posch M, Staudenherz A,

Handisurya A, Reeve J, Halloran PF, Böhmig GA. A Randomized Trial of Bortezomib in Late Antibody-Mediated Kidney Transplant Rejection. *J Am Soc Nephrol.* 2018 Feb;29(2):591-605. doi: 10.1681/ASN.2017070818. Epub 2017 Dec 14. PMID: 29242250; PMCID: PMC5791086.

7 Kulkarni S, Kirkiles-Smith NC, Deng YH, Formica RN, Moeckel G, Broecker V, Bow L, Tomlin R, Pober JS. Eculizumab Therapy for Chronic Antibody-Mediated Injury in Kidney Transplant Recipients: A Pilot Randomized Controlled Trial. *Am J Transplant.* 2017 Mar;17(3):682-691. doi: 10.1111/ajt.14001. Epub 2016 Sep 16. PMID: 27501352.

8 Furness PN, Taub N; Convergence of European Renal Transplant Pathology Assessment Procedures (CERTPAP) Project. International variation in the interpretation of renal transplant biopsies: report of the CERTPAP Project. *Kidney Int.* 2001 Nov;60(5):1998-2012. doi: 10.1046/j.1523-1755.2001.00030.x. Erratum in: *Kidney Int* 2001 Dec;60(6):2429. PMID: 11703620.

9 Schwarz A, Gwinner W, Hiss M, Radermacher J, Mengel M, Haller H. Safety and adequacy of renal transplant protocol biopsies. *Am J Transplant.* 2005 Aug;5(8):1992-6. doi: 10.1111/j.1600-6143.2005.00988.x. PMID: 15996250.

10 Van Loon E, Lerut E, Naesens M. The time dependency of renal allograft histology. *Transpl Int.* 2017 Nov;30(11):1081-1091. doi: 10.1111/tri.13042. Epub 2017 Sep 28. PMID: 28850734.

11 Wu K, Schmidt D, López Del Moral C, Osmanodja B, Lachmann N, Halleck F, Choi M, Bachmann F, Ronicke S, Duettmann W, Naik M, Schrezenmeier E, Rudolph B, Budde K. Poor Outcomes in Patients With Transplant Glomerulopathy Independent of Banff Categorization or Therapeutic Interventions. *Front Med (Lausanne).* 2022 May 12;9:889648. doi: 10.3389/fmed.2022.889648. PMID: 35646957; PMCID: PMC9133540.

12 Haas M, Mirocha J, Huang E, Najjar R, Peng A, Sethi S, Vo A, Anglicheau D, Jordan SC, Rabant M. A Banff-based histologic chronicity index is associated with graft loss in patients with a kidney transplant and antibody-mediated rejection. *Kidney Int.* 2023 Jan;103(1):187-195. doi: 10.1016/j.kint.2022.09.030. Epub 2022 Nov 1. PMID: 36332728.

13 Chancay J, Liu C, Chauhan K, Andersen L, Harris C, Coca S, Delaney V, Tedla F, De Boccardo G, Sehgal V, Moledina D, Formica R, Reghuvaran A, Banu K, Florman S, Akalin E, Shapiro R, Salem F, Menon MC. Role of time from transplantation to biopsy in histologic ABMR: A single center report. *Clin Transplant.* 2022 Dec;36(12):e14802. doi: 10.1111/ctr.14802. Epub 2022 Nov 1. PMID: 36069577; PMCID: PMC10211409.

14 Bertrand D, Gatault P, Jauréguy M, Garrouste C, Sayegh J, Bouvier N, Caillard S, Lanfranco L, Galinier A, Laurent C, Etienne I, Farce F, François A, Guerrot D. Protocol Biopsies in Patients With Subclinical De Novo Donor-specific Antibodies After Kidney Transplantation: A Multicentric Study. *Transplantation.* 2020 Aug;104(8):1726-1737. doi: 10.1097/TP.0000000000003055. PMID: 32732853.

15 Eskandary F, Bond G, Kozakowski N, Regele H, Marinova L, Wahrmann M, Kikić Ž, Haslacher H, Rasoul-Rockenschaub S, Kaltenecker CC, König F, Hidalgo LG, Oberbauer R, Halloran PF, Böhmig GA. Diagnostic Contribution of Donor-Specific Antibody Characteristics to Uncover Late Silent Antibody-Mediated Rejection-Results of a Cross-Sectional Screening Study. *Transplantation.* 2017 Mar;101(3):631-641. doi: 10.1097/TP.0000000000001195. PMID: 27120452.

16 Schinstock CA, Cosio F, Cheungpasitporn W, Dadhania DM, Everly MJ, Samaniego-Picota MD, Cornell L, Stegall MD. The Value of Protocol Biopsies to Identify Patients With De Novo Donor-Specific Antibody at High Risk for Allograft Loss. *Am J Transplant.* 2017 Jun;17(6):1574-1584. doi: 10.1111/ajt.14161. Epub 2017 Jan 25. PMID: 27977905; PMCID: PMC5445019.

17 Mayer KA, Schrezenmeier E, Diebold M, Halloran PF, Schatzl M, Schranz S, Haindl S, Kasbohm S, Kainz A, Eskandary F, Doberer K, Patel UD, Dudani JS, Regele H, Kozakowski N, Kläger J, Boxhammer R, Amann K, Puchhammer-Stöckl E, Vietzen H, Beck J, Schütz E, Akifova A, Firbas C, Gilbert HN, Osmanodja B, Halleck F, Jilma B, Budde K, Böhmig GA. A Randomized Phase 2 Trial of Felzartamab in Antibody-Mediated Rejection. *N Engl J Med*. 2024 May 25. doi: 10.1056/NEJMoa2400763. Epub ahead of print. PMID: 38804514

18 van den Broek DAJ, Meziyerh S, Budde K, Lefaucheur C, Cozzi E, Bertrand D, López Del Moral C, Dorling A, Emonds MP, Naesens M, de Vries APJ; ESOT Working Group. Subclinical DSA Monitoring. The Clinical Utility of Post-Transplant Monitoring of Donor-Specific Antibodies in Stable Renal Transplant Recipients: A Consensus Report With Guideline Statements for Clinical Practice. *Transpl Int*. 2023 Jul 25;36:11321. doi: 10.3389/ti.2023.11321. PMID: 37560072; PMCID: PMC10408721.

19 Viglietti D, Loupy A, Vernerey D, Bentelejewski C, Gosset C, Aubert O, Duong van Huyen JP, Jouven X, Legendre C, Glotz D, Zeevi A, Lefaucheur C. Value of Donor-Specific Anti-HLA Antibody Monitoring and Characterization for Risk Stratification of Kidney Allograft Loss. *J Am Soc Nephrol*. 2017 Feb;28(2):702-715. doi: 10.1681/ASN.2016030368. Epub 2016 Aug 4. PMID: 27493255; PMCID: PMC5280026.

20 Loupy A, Lefaucheur C, Vernerey D, Prugger C, Duong van Huyen JP, Mooney N, Suberbielle C, Frémeaux-Bacchi V, Méjean A, Desgrandchamps F, Anglicheau D, Nochy D, Charron D, Empana JP, Delahousse M, Legendre C, Glotz D, Hill GS, Zeevi A, Jouven X. Complement-binding anti-HLA antibodies and kidney-allograft survival. *N Engl J Med*. 2013 Sep 26;369(13):1215-26. doi: 10.1056/NEJMoa1302506. PMID: 24066742.

21 Lefaucheur C, Viglietti D, Bentelejewski C, Duong van Huyen JP, Vernerey D, Aubert O, Verine J, Jouven X, Legendre C, Glotz D, Loupy A, Zeevi A. IgG Donor-Specific Anti-Human HLA Antibody Subclasses and Kidney Allograft Antibody-Mediated Injury. *J Am Soc Nephrol*.

2016 Jan;27(1):293-304. doi: 10.1681/ASN.201411120. Epub 2015 Aug 20. PMID: 26293822; PMCID: PMC4696574.

22 Gebel HM, Bray RA. HLA antibody detection with solid phase assays: great expectations or expectations too great? *Am J Transplant.* 2014 Sep;14(9):1964-75. doi: 10.1111/ajt.12807. Epub 2014 Aug 1. PMID: 25088978.

23 López Del Moral C, Wu K, Naik M, Osmanodja B, Akifova A, Lachmann N, Stauch D, Hergovits S, Choi M, Bachmann F, Halleck F, Schrezenmeier E, Schmidt D, Budde K. The natural history of *de novo* donor-specific HLA antibodies after kidney transplantation. *Front Med (Lausanne).* 2022 Sep 16;9:943502. doi: 10.3389/fmed.2022.943502. PMID: 36186822; PMCID: PMC9523126.

24 Tambur AR, Campbell P, Claas FH, Feng S, Gebel HM, Jackson AM, Mannon RB, Reed EF, Tinckam K, Askar M, Chandraker A, Chang PP, Colvin M, Demetris AJ, Diamond JM, Dipchand AI, Fairchild RL, Ford ML, Friedewald J, Gill RG, Glotz D, Goldberg H, Hachem R, Knechtle S, Kobashigawa J, Levine DJ, Levitsky J, Mengel M, Milford E, Newell KA, O'Leary JG, Palmer S, Randhawa P, Smith J, Snyder L, Starling RC, Sweet S, Taner T, Taylor CJ, Woodle S, Zeevi A, Nickerson P. Sensitization in Transplantation: Assessment of Risk (STAR) 2017 Working Group Meeting Report. *Am J Transplant.* 2018 Jul;18(7):1604-1614. doi: 10.1111/ajt.14752. Epub 2018 May 22. PMID: 29603613.

25 Oellerich M, Sherwood K, Keown P, Schütz E, Beck J, Stegbauer J, Rump LC, Walson PD. Liquid biopsies: donor-derived cell-free DNA for the detection of kidney allograft injury. *Nat Rev Nephrol.* 2021 Sep;17(9):591-603. doi: 10.1038/s41581-021-00428-0. Epub 2021 May 24. PMID: 34031575.

26 Knight SR, Thorne A, Lo Faro ML. Donor-specific Cell-free DNA as a Biomarker in Solid Organ Transplantation. A Systematic Review. *Transplantation.* 2019 Feb;103(2):273-283. doi: 10.1097/TP.0000000000002482. PMID: 30308576.

27 Bloom RD, Bromberg JS, Poggio ED, Bunnapradist S, Langone AJ, Sood P, Matas AJ, Mehta S, Mannon RB, Sharfuddin A, Fischbach B, Narayanan M, Jordan SC, Cohen D, Weir MR, Hiller D, Prasad P, Woodward RN, Grskovic M, Sninsky JJ, Yee JP, Brennan DC; Circulating Donor-Derived Cell-Free DNA in Blood for Diagnosing Active Rejection in Kidney Transplant Recipients (DART) Study Investigators. Cell-Free DNA and Active Rejection in Kidney Allografts. *J Am Soc Nephrol.* 2017 Jul;28(7):2221-2232. doi: 10.1681/ASN.2016091034. Epub 2017 Mar 9. PMID: 28280140; PMCID: PMC5491290.

28 Jordan SC, Bunnapradist S, Bromberg JS, Langone AJ, Hiller D, Yee JP, Sninsky JJ, Woodward RN, Matas AJ. Donor-derived Cell-free DNA Identifies Antibody-mediated Rejection in Donor Specific Antibody Positive Kidney Transplant Recipients. *Transplant Direct.* 2018 Aug 20;4(9):e379. doi: 10.1097/TXD.0000000000000821. PMID: 30234148; PMCID: PMC6133406.

29 Zhang H, Zheng C, Li X, Fu Q, Li J, Su Q, Zeng L, Liu Z, Wang J, Huang H, Xu B, Ye M, Liu L, Wang C. Diagnostic Performance of Donor-Derived Plasma Cell-Free DNA Fraction for Antibody-Mediated Rejection in Post Renal Transplant Recipients: A Prospective Observational Study. *Front Immunol.* 2020 Feb 28;11:342. doi: 10.3389/fimmu.2020.00342. PMID: 32184785; PMCID: PMC7058974.

30 Mayer KA, Doberer K, Tillgren A, Viard T, Haindl S, Krivanec S, Reindl-Schwaighofer R, Eder M, Eskandary F, Casas S, Wahrmann M, Regele H, Böhmig GA. Diagnostic value of donor-derived cell-free DNA to predict antibody-mediated rejection in donor-specific antibody-positive renal allograft recipients. *Transpl Int.* 2021 Sep;34(9):1689-1702. doi: 10.1111/tri.13970. PMID: 34448270; PMCID: PMC8456909.

31 Akifova A, Budde K, Choi M, Oellerich M, Beck J, Bornemann-Kolatzki K, Schütz E, Kowald J, Osmanodja B. Donor-Derived Cell-Free DNA in Biopsy-Proven Antibody-Mediated Rejection Versus Recurrent IgA Nephropathy After Kidney Transplantation. *Kidney Int Rep.*

2023 Jul 21;8(10):2141-2145. doi: 10.1016/j.ekir.2023.07.011. PMID: 37849995; PMCID: PMC10577319.

32 Beck J, Bierau S, Balzer S, et al. Digital droplet PCR for rapid quantification of donor DNA in the circulation of transplant recipients as a potential universal biomarker of graft injury. *Clin Chem*. 2013;59:1732–1741.

33 Oellerich M, Shipkova M, Asendorf T, et al. Absolute quantification of donor-derived cell-free DNA as a marker of rejection and graft injury in kidney transplantation: results from a prospective observational study. *Am J Transplant*. 2019;19:3087–3099.

34 Sigdel TK, Archila FA, Constantin T, Prins SA, Liberto J, Damm I, Towfighi P, Navarro S, Kirkizlar E, Demko ZP, Ryan A, Sigurjonsson S, Sarwal RD, Hseish SC, Chan-On C, Zimmermann B, Billings PR, Moshkevich S, Sarwal MM. Optimizing Detection of Kidney Transplant Injury by Assessment of Donor-Derived Cell-Free DNA via Massively Multiplex PCR. *J Clin Med*. 2018 Dec 23;8(1):19. doi: 10.3390/jcm8010019. PMID: 30583588; PMCID: PMC6352163.

35 Grskovic M, Hiller DJ, Eubank LA, Sninsky JJ, Christopherson C, Collins JP, Thompson K, Song M, Wang YS, Ross D, Nelles MJ, Yee JP, Wilber JC, Crespo-Leiro MG, Scott SL, Woodward RN. Validation of a Clinical-Grade Assay to Measure Donor-Derived Cell-Free DNA in Solid Organ Transplant Recipients. *J Mol Diagn*. 2016 Nov;18(6):890-902. doi: 10.1016/j.jmoldx.2016.07.003. Epub 2016 Oct 7. PMID: 27727019.

36 Loupy A, Haas M, Roufousse C, Naesens M, Adam B, Afrouzian M, Akalin E, Alachkar N, Bagnasco S, Becker JU, Cornell LD, Clahsen-van Groningen MC, Demetris AJ, Dragun D, Duong van Huyen JP, Farris AB, Fogo AB, Gibson IW, Glotz D, Gueguen J, Kikic Z, Kozakowski N, Kraus E, Lefaucheur C, Liapis H, Mannon RB, Montgomery RA, Nankivell BJ, Nickleit V, Nickerson P, Rabant M, Racusen L, Randhawa P, Robin B, Rosales IA, Sapir-Pichhadze R, Schinstock CA, Seron D, Singh HK, Smith RN, Stegall MD, Zeevi A,

Solez K, Colvin RB, Mengel M. The Banff 2019 Kidney Meeting Report (I): Updates on and clarification of criteria for T cell- and antibody-mediated rejection. *Am J Transplant.* 2020 Sep;20(9):2318-2331. doi: 10.1111/ajt.15898. Epub 2020 May 28. PMID: 32463180; PMCID: PMC7496245.

37 Halloran PF, Madill-Thomsen KS, Reeve J. The Molecular Phenotype of Kidney Transplants: Insights From the MMDx Project. *Transplantation.* 2023 Jun 13. doi: 10.1097/TP.0000000000004624. Epub ahead of print. PMID: 37310258.

38 Reeve J, Böhmig GA, Eskandary F, Einecke G, Lefaucheur C, Loupy A, Halloran PF; MMDx-Kidney study group. Assessing rejection-related disease in kidney transplant biopsies based on archetypal analysis of molecular phenotypes. *JCI Insight.* 2017 Jun 15;2(12):e94197. doi: 10.1172/jci.insight.94197. PMID: 28614805; PMCID: PMC5470931.

39 Naesens M, Roufosse C, Haas M, Lefaucheur C, Mannon RB, Adam BA, Aubert O, Böhmig GA, Callemeyn J, Clahsen-van Groningen M, Cornell LD, Demetris AJ, Drachenberg CB, Einecke G, Fogo AB, Gibson IW, Halloran P, Hidalgo LG, Horsfield C, Huang E, Kikić Ž, Kozakowski N, Nankivell B, Rabant M, Randhawa P, Riella LV, Sapir-Pichhadze R, Schinstock C, Solez K, Tambur AR, Thaunat O, Wiebe C, Zielinski D, Colvin R, Loupy A, Mengel M. The Banff 2022 Kidney Meeting Report: Reappraisal of microvascular inflammation and the role of biopsy-based transcript diagnostics. *Am J Transplant.* 2024 Mar;24(3):338-349. doi: 10.1016/j.ajt.2023.10.016 Epub 2023 Oct 28. PMID: 38032300

40 Inker LA, Eneanya ND, Coresh J, Tighiouart H, Wang D, Sang Y, Crews DC, Doria A, Estrella MM, Froissart M, Grams ME, Greene T, Grubb A, Gudnason V, Gutiérrez OM, Kalil R, Karger AB, Mauer M, Navis G, Nelson RG, Poggio ED, Rodby R, Rossing P, Rule AD, Selvin E, Seegmiller JC, Shlipak MG, Torres VE, Yang W, Ballew SH, Couture SJ, Powe NR, Levey AS; Chronic Kidney Disease Epidemiology Collaboration. New Creatinine- and Cystatin C-Based Equations to Estimate GFR without Race. *N Engl J Med.* 2021 Nov

4;385(19):1737-1749. doi: 10.1056/NEJMoa2102953. Epub 2021 Sep 23. PMID: 34554658; PMCID: PMC8822996.

41 Bromberg JS, Bunnapradist S, Samaniego-Picota M, Anand S, Stites E, Gauthier P, Demko Z, Prewett A, Armer-Cabral M, Marshall K, Kaur N, Bloom MS, Tabriziani H, Bhorade S, Cooper M; ProActive Investigators. Elevation of Donor-derived Cell-free DNA Before Biopsy-proven Rejection in Kidney Transplant. *Transplantation*. 2024 Apr 8. doi: 10.1097/TP.0000000000005007. Epub ahead of print. PMID: 38595232

42 Whitlam JB, Ling L, Skene A, Kanellis J, Ierino FL, Slater HR, Bruno DL, Power DA. Diagnostic application of kidney allograft-derived absolute cell-free DNA levels during transplant dysfunction. *Am J Transplant*. 2019 Apr;19(4):1037-1049. doi: 10.1111/ajt.15142. Epub 2018 Nov 9. PMID: 30312536.

43 Pagliuzzi A, Bestard O and Naesens M (2023) Donor-Derived Cell-Free DNA: Attractive Biomarker Seeks a Context of Use. *Transpl Int* 36:12406. doi: 10.3389/ti.2023.12406

44 Schütz E, Asendorf T, Beck J, Schauerte V, Mettenmeyer N, Shipkova M, Wieland E, Kabakchiev M, Walson PD, Schwenger V, Oellerich M. Time-Dependent Apparent Increase in dd-cfDNA Percentage in Clinically Stable Patients Between One and Five Years Following Kidney Transplantation. *Clin Chem*. 2020 Oct 1;66(10):1290-1299. doi: 10.1093/clinchem/hvaa175. PMID: 33001185.

45 Osmanodja B, Akifova A, Budde K, Choi M, Oellerich M, Schütz E, Beck J. Absolute or Relative Quantification of Donor-derived Cell-free DNA in Kidney Transplant Recipients: Case Series. *Transplant Direct*. 2021 Oct 22;7(11):e778. doi: 10.1097/TXD.0000000000001237. PMID: 34712778; PMCID: PMC8547915.

46 Gupta G, Moinuddin I, Kamal L, King AL, Winstead R, Demehin M, Kang L, Kimball P, Levy M, Bhati C, Massey HD, Kumar D, Halloran PF. Correlation of Donor-derived Cell-free DNA With Histology and Molecular Diagnoses of Kidney Transplant Biopsies.

Transplantation. 2022 May 1;106(5):1061-1070. doi: 10.1097/TP.0000000000003838. Epub 2021 May 28. PMID: 34075006.

47 Halloran PF, Reeve J, Madill-Thomsen KS, Demko Z, Prewett A, Billings P; Trifecta Investigators. The Trifecta Study: Comparing Plasma Levels of Donor-derived Cell-Free DNA with the Molecular Phenotype of Kidney Transplant Biopsies. *J Am Soc Nephrol*. 2022 Feb;33(2):387-400. doi: 10.1681/ASN.2021091191. Epub 2022 Jan 20. PMID: 35058354; PMCID: PMC8819982.

48 Halloran PF, Reeve J, Madill-Thomsen KS, Kaur N, Ahmed E, Cantos C, Al Haj Baddar N, Demko Z, Liang N, Swenerton RK, Zimmermann BG, Van Hummelen P, Prewett A, Rabinowitz M, Tabriziani H, Gauthier P, Billings P; Trifecta Investigators*. Combining Donor-derived Cell-free DNA Fraction and Quantity to Detect Kidney Transplant Rejection Using Molecular Diagnoses and Histology as Confirmation. *Transplantation*. 2022 Dec 1;106(12):2435-2442. doi: 10.1097/TP.0000000000004212. Epub 2022 Nov 22. PMID: 35765145; PMCID: PMC9698190

49 Gielis EM, Ledeganck KJ, Dendooven A, Meysman P, Beirnaert C, Laukens K, De Schrijver J, Van Laecke S, Van Biesen W, Emonds MP, De Winter BY, Bosmans JL, Del Favero J, Abramowicz D. The use of plasma donor-derived, cell-free DNA to monitor acute rejection after kidney transplantation. *Nephrol Dial Transplant*. 2020 Apr 1;35(4):714-721. doi: 10.1093/ndt/gfz091. PMID: 31106364.

50 Cucchiari D, Cuadrado-Payan E, Gonzalez-Roca E, Revuelta I, Argudo M, Ramirez-Bajo MJ, Ventura-Aguiar P, Rovira J, Bañon-Maneus E, Montagud-Marrahi E, Rodriguez-Espinosa D, Cacho J, Arana C, Torregrosa V, Esforzado N, Cofàn F, Oppenheimer F, Musquera M, Peri L, Casas S, Dholakia S, Palou E, Campistol JM, Bayés B, Puig JA, Diekmann F. Early Kinetics of Donor-Derived Cell-Free DNA After Transplantation Predicts Renal Graft Recovery and Long-Term Function. *Nephrol Dial Transplant*. 2023 Sep 15;gfad120. doi: 10.1093/ndt/gfad120. Epub ahead of print. PMID: 37715343.

51 Mayer KA, Omic H, Weseslindtner L, Doberer K, Reindl-Schwaighofer R, Viard T, Tillgren A, Haindl S, Casas S, Eskandary F, Heinzl A, Kozakowski N, Kikić Ž, Böhmig GA, Eder M. Levels of donor-derived cell-free DNA and chemokines in BK polyomavirus-associated nephropathy. Clin Transplant. 2022 Nov;36(11):e14785. doi: 10.1111/ctr.14785. Epub 2022 Aug 5. PMID: 35894263; PMCID: PMC10078585.

Table 1. Inclusion and exclusion criteria. dnDSA, de novo anti-HLA antibodies.

<p>Inclusion Criteria:</p> <ul style="list-style-type: none">● patients after kidney transplantation● functioning kidney transplant, at least 180 days after last transplantation● patients 18 years or older● patients provided written informed consent● estimated glomerular filtration rate at least 20 mL/min/1.73m²● detection of dnDSA against the most recent kidney transplant with MFI > 1000 at the latest annual HLA screening
<p>Exclusion Criteria:</p> <ul style="list-style-type: none">● patients younger than 18 years● patients unable or did not provide written informed consent● pregnant or breastfeeding persons● patients with increased bleeding risk● patients with multi-organ transplantation● patients who underwent kidney allograft biopsy after first detection of dnDSA<ul style="list-style-type: none">○ including those with biopsy-proven antibody-mediated rejection● participation in another interventional clinical trial

Table 2. Baseline characteristics according to the treatment group. IQR, interquartile range; TCMR, T-cell mediated rejection; MPA, mycophenolic acid; cPRA, combined panel reactivity antibodies; eGFR, estimated glomerular filtration rate; dnDSA, de novo anti-HLA antibodies; MFI, mean fluorescence intensity; uACR, urine albumin creatinine ratio.

	All participants	Intervention group	Control group
N	40	20	20
Median age in years (IQR)	54.8 (47.8-66.9)	57.5 (50.0 - 67.1)	52.4 (39.8 - 66.0)
Sex			
- Female	7 (17.5%)	3 (15%)	4 (20%)
- Male	33 (82.5%)	17 (85%)	16 (80%)
Median BMI (IQR)	25.5 (22.3-29.2)	27.9 (24.0-29.6)	24.1 (21.6 - 26.4)
Median time on dialysis in years (IQR)	3.9 (1.0-7.4)	4.4 (1.2-6.7)	1.9 (1.0 - 8.1)
Median time since transplantation in years (IQR)	10.7 (4.2-15.1)	10.7 (4.3-13.7)	10.3 (4.2 - 15.7)
Preemptive Transplantations	10 (25%)	5 (25%)	5 (25%)
Living Donations	22 (55%)	12 (60%)	10 (50%)
Previous kidney transplantation	1 (2.5%)	0 (0%)	1 (5%)
Induction immunosuppression			
- Basiliximab	34 (85%)	18 (90%)	16 (80%)
Maintenance immunosuppression			
- Steroid	23 (57.5%)	13 (65%)	10 (50%)
- MPA	38 (95%)	18 (90%)	20 (100%)
- Tacrolimus	23 (57.5%)	11 (55%)	12 (60%)

- Cyclosporin	12 (30%)	6 (30%)	6 (30%)
HLA-mismatch grade - median (IQR)	3 (2-4)	3 (2-3)	4 (3 - 4)
PIRCHE-II sum score - median (IQR)	68.9 (55.8-98.9)	62.4 (46.0-97.7)	73.7 (60.3-111.8)
cPRA			
- 0%	37 (92.5%)	19 (95%)	18 (90%)
- 0-25%	3 (7.5%)	1 (5%)	2 (10%)
Previous borderline rejection or TCMR episode - n (%)	8 (20%)	3 (15%)	5 (25%)
Median months since first dnDSA occurrence (IQR)	24.9 (7.2-114.3)	24.0 (7.2-96.5)	33.5 (12.2-116.7)
Multiple dnDSA - n (%)	14 (35%)	6 (30%)	8 (40%)
Class 1 dnDSA only (%)	5 (12.5%)	2 (5%)	3 (7.5%)
Class 2 dnDSA only (%)	27 (67.5%)	15 (37.5%)	12 (30%)
Class 1 + 2 dnDSA (%)	8 (20%)	3 (7.5%)	5 (12.5%)
MFI at baseline - median (IQR)	4685 (1627-16974)	3855 (1472-9565)	6809 (2420-19550)
Median eGFR in ml/min/1.73m ² at d0 (IQR)	51.4 (40.3-62.0)	47.2 (37.4-59.5)	54.4 (46.4-62.8)
eGFR slope in the previous year in ml/min/1.73m ² /year	-0.16 ± 2.29	-0.61 ± 2.43	0.28 ± 2.11
eGFR slope in the previous 2 years in ml/min/1.73m ² /year	-0.71 ± 2.36	-1.23 ± 2.36	-0.18 ± 2.29
Median uACR in mg/g at day 0 (IQR)	55 (22-276)	62 (30-263)	52 (22-286)

Table 3. Biopsy results and indication for each treatment group and the respective dd-cfDNA results at the time of biopsy. AMR, antibody-mediated rejection; TCMR, T-cell mediated rejection; CNI, calcineurin inhibitor; IQR, interquartile range.

Group	Biopsy indication	n	aAMR	caAMR	TCMR	unremarkable	CNI-toxicity	Other
Intervention	dd-cfDNA > 50cp/mL	7	5	1	-	-	1	-
	clinical	3	0	1	-	-	1	1
	protocol	3	0	0	-	1	1	1
Control	clinical	2	0	0	1	-	-	1
	protocol	11	2	3	-	4	2	-
Total count			7	5	1	5	5	3
median absolute dd-cfDNA (IQR)			63cp/mL (59-92)	39cp/mL (18-67)	30 cp/mL	10cp/mL (9-16)	14cp/mL (12-16)	8 cp/mL (range 6-34)
median relative dd-cfDNA (IQR)			1.31% (0.97-2.52)	2.14% (1.10 - 3.80)	0.4%	0.44% (0.29 -0.58)	0.78% (0.5-0.8)	0.33% (range 0.28-0.7)

Table 4. Contingency table and diagnostic test metrics of longitudinal absolute dd-cfDNA monitoring with a cutoff of 50 copies/mL for AMR in DSA+ KTR. Prev, Prevalence of AMR; Acc, accuracy; Sens, sensitivity; Spec, specificity; PPV, positive predictive value; NPV, negative predictive value.

	AMR	no AMR	Total	
>50 cp/mL	10	3	13	PPV 0.77
≤50 cp/mL	2	11	13	NPV 0.85
Total	12	14	26	Prev 0.46
	Sens 0.83	Spec 0.79		Acc 0.81

Table 5. Contingency table and diagnostic test metrics of longitudinal uACR monitoring with a cutoff of 300 mg/g for AMR in DSA+ KTR. Prev, Prevalence of AMR; Acc, accuracy; Sens, sensitivity; Spec, specificity; PPV, positive predictive value; NPV - negative predictive value.

	AMR	no AMR	Total	
>300 mg/g	7	4	11	PPV 0.54
≤300 mg/g	5	10	15	NPV 0.77
Total	12	14	26	Prev 0.46
	Sens 0.58	Spec 0.71		Acc 0.65

Table 6. Contingency table and diagnostic test metrics of >0.3 mg/dL increase in creatinine from baseline creatinine for AMR in DSA+ KTR. Prev, Prevalence of AMR; Acc, accuracy; Sens, sensitivity; Spec, specificity; PPV, positive predictive value; NPV, negative predictive value.

	AMR	no AMR	Total	
>0.3 mg/dL	3	4	7	PPV 0.43
≤0.3 mg/dL	9	10	19	NPV 0.53
Total	12	14	26	Prev 0.46
	Sens 0.25	Spec 0.71		Acc 0.5

Table 7. Contingency table and diagnostic test metrics of MFI doubling from first occurrence to maximum MFI for AMR in DSA+ KTR. Prev, Prevalence of AMR; Acc, accuracy; Sens, sensitivity; Spec, specificity; PPV, positive predictive value; NPV, negative predictive value.

	AMR	no AMR	Total	
MFI increase >100%	5	2	7	PPV 0.71
stable or decreasing MFI	7	12	19	NPV 0.63
Total	12	14	26	Prev 0.46
	Sens 0.42	Spec 0.86		Acc 0.65

ORIGINAL UNEDITED MANUSCRIPT

Figure legends

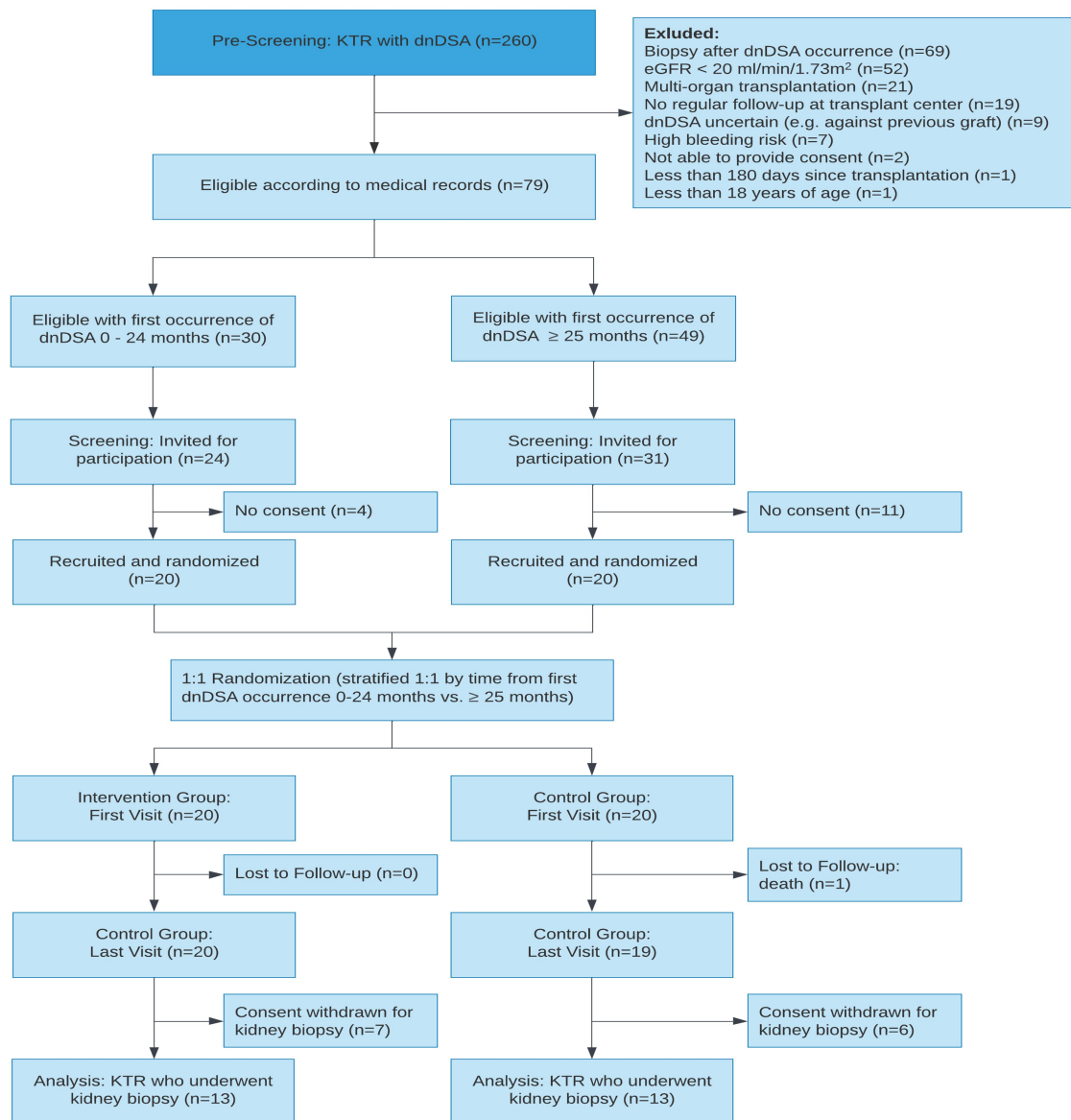


Figure 1. CONSORT diagram. We identified 260 KTR with prevalent dnDSA (MFI >1000) detected by annual screening out of which 79 fulfilled the eligibility criteria. From these, 55 were invited to participate during the recruitment period from June 17, 2021, until July 4, 2022, and 40 provided consent and were randomized. Since one patient died, and 13 withdrew consent for biopsy, 26 patients were included in the final analysis. KTR, kidney transplant recipients; dnDSA, de novo anti-HLA antibodies; eGFR, estimated glomerular filtration rate.

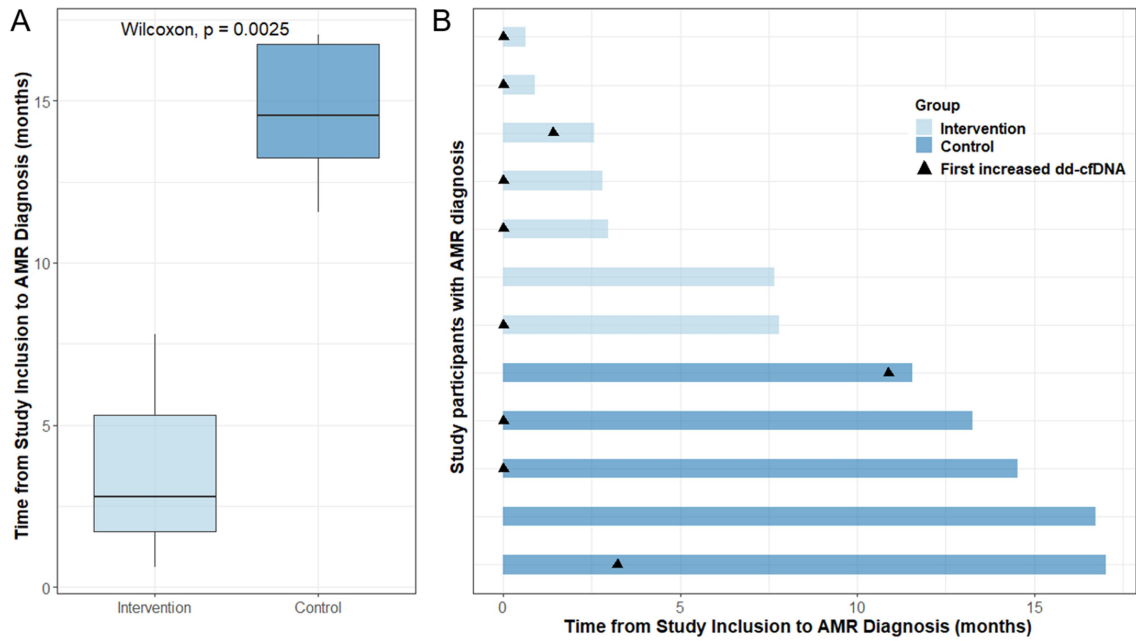


Figure 2. A) Boxplots comparing the time from study inclusion to AMR diagnosis for patients with AMR according to treatment groups. **B)** Time from study inclusion to AMR diagnosis in months for each patient with AMR diagnosis according to treatment group. Arrowheads indicate the timing of the first increase in absolute dd-cfDNA above the prespecified cutoff of 50 copies/mL for each patient, and no arrowheads indicate absolute dd-cfDNA below the prespecified cutoff over the observation period.

ORIGINAL UNEDITED MANUSCRIPT

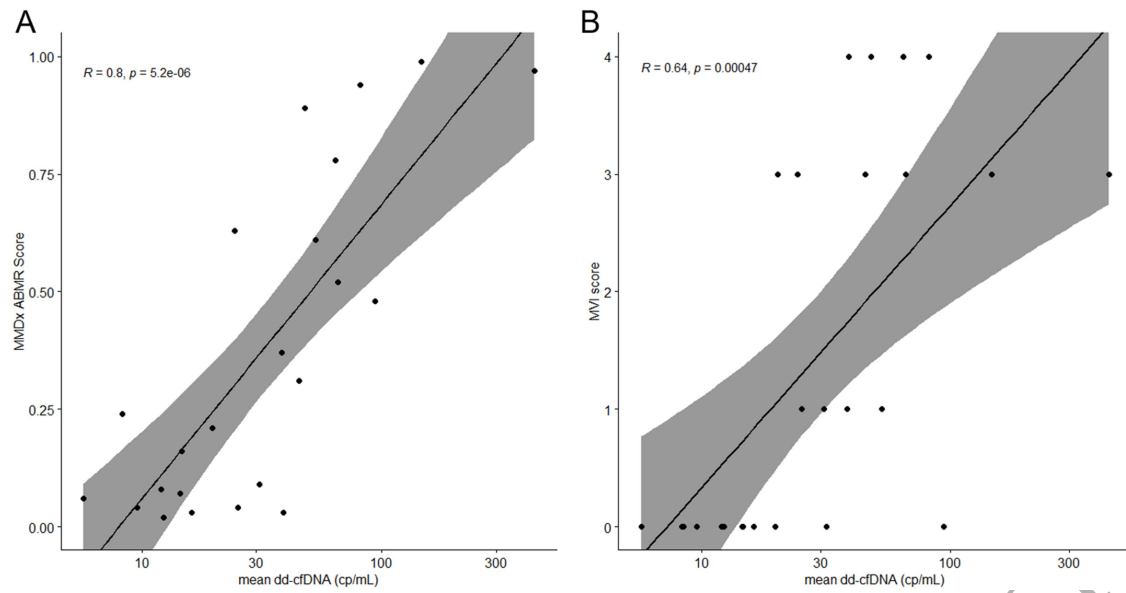


Figure 3. A) Scatterplot showing the Pearson correlation coefficient between log-transformed mean dd-cfDNA in copies/mL and the molecular AMR score. **B)** Scatterplot showing the Pearson correlation coefficient between log-transformed mean dd-cfDNA in copies/mL and the microvascular inflammation score (g+ptc) in conventional histopathology.

ORIGINAL UNEDITED MANUSCRIPT