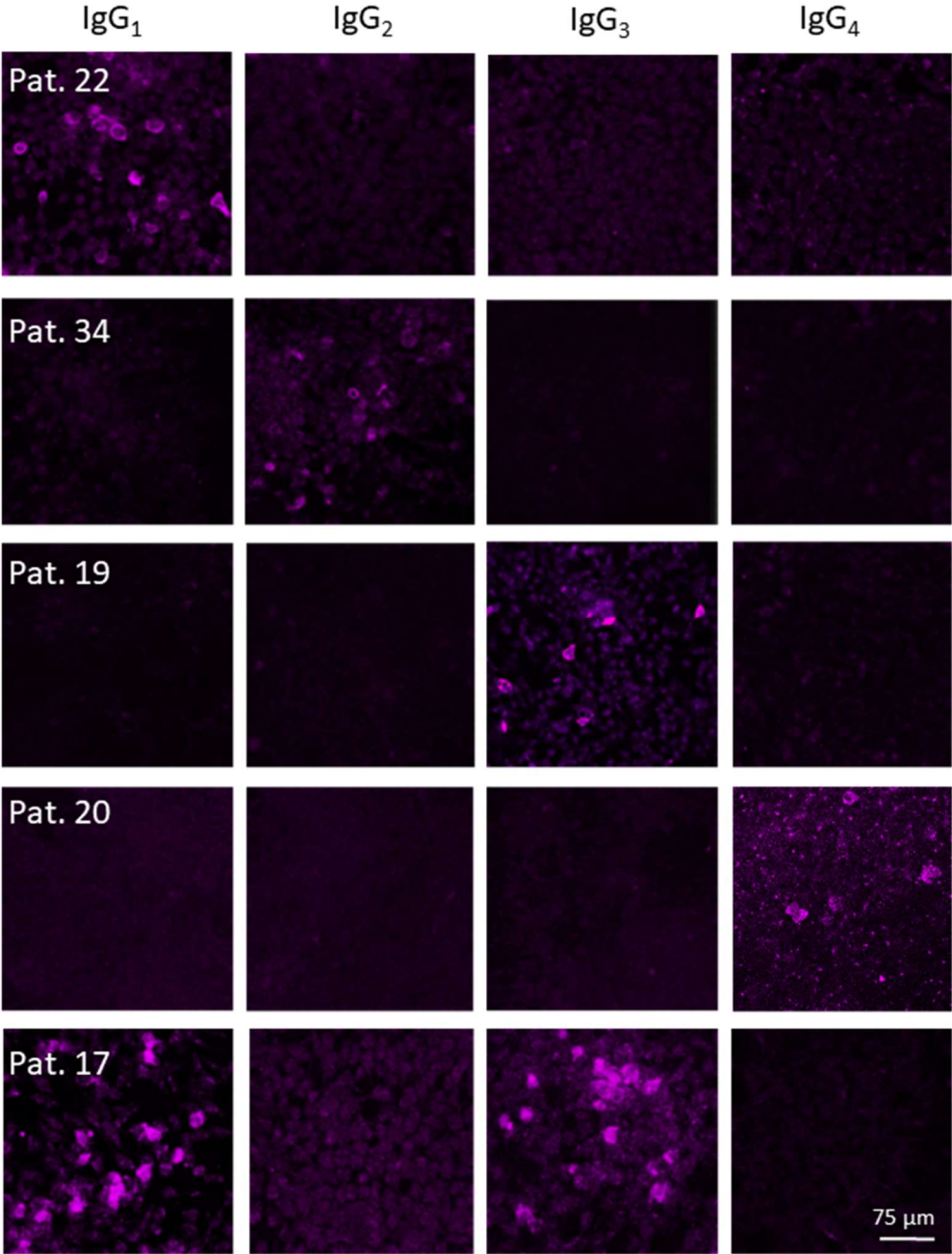


Synapsin autoantibodies during pregnancy are associated with fetal abnormalities



Suppl. Figure 1. Different IgG subclasses of synapsin-1b autoantibodies.

Representative serum examples of five patients containing synapsin-1b autoantibodies. Immunofluorescence stainings (1:300 dilution) on HEK293 cells overexpressing human synapsin-1b demonstrate the presence of all four IgG subclasses IgG1, IgG2, IgG3 and IgG4.