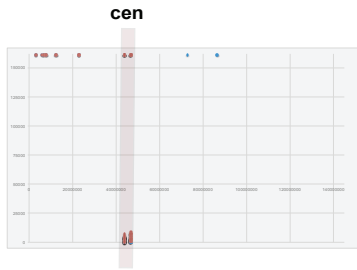


a

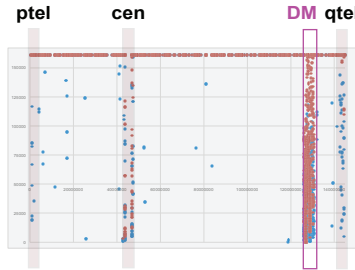
# Breakpoint clustering

◆ cluster region with 5 breakpoints  
■ cluster region with 10 breakpoints

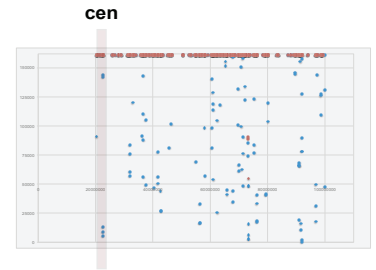
**NEGATIVE  
CONTROL**



**MLL\_11929  
whole chromosome 8**

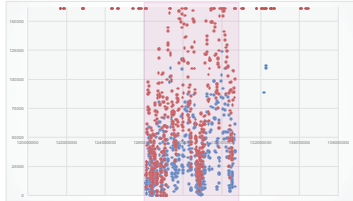


**POSITIVE  
CONTROL**



## Amplified regions

**MLL\_11929**



**MLL\_10598**



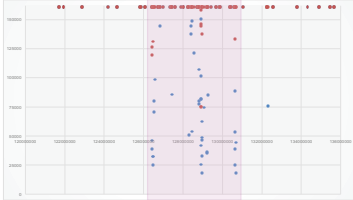
**MLL\_11930**



**MLL\_11931**



**MLL\_12445**



**MLL\_10619**



**MLL\_11932**



**MLL\_11933**



**MLL\_11934**



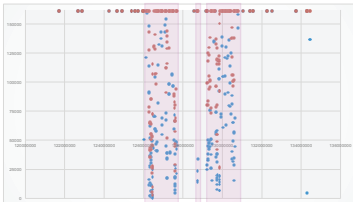
**MLL\_11935**



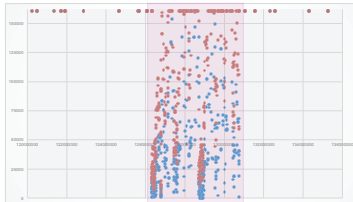
**MLL\_11936**



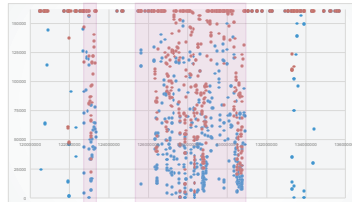
**MLL\_11937**



**MLL\_11938**



**MLL\_11939**



**MLL\_11940**



**MLL\_11941**



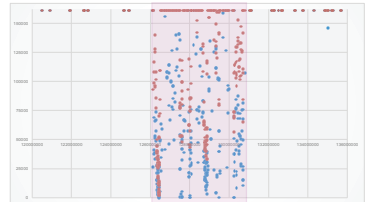
**07B60**



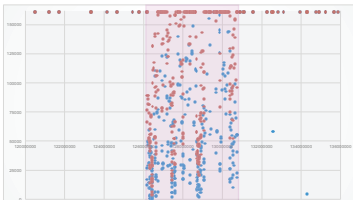
**1262-09**



**757-02**



**756-04**



**1-07KM6821**



**3-06PB4872**

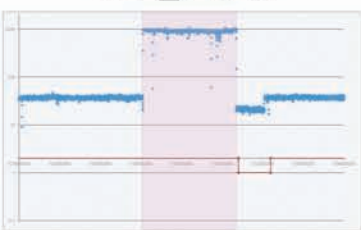
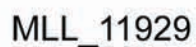


**4-09KM0664**

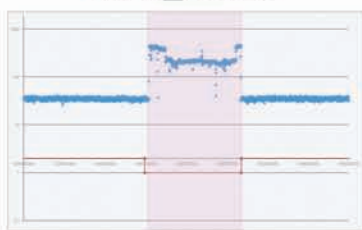


**b**

## CNs and LOH



MLL\_10598



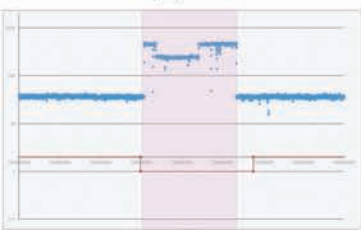
MLL\_11930



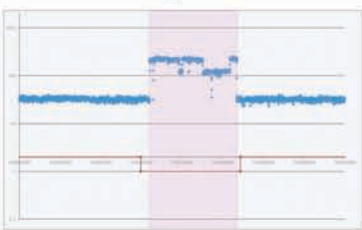
MLL\_11931



MLL\_12445



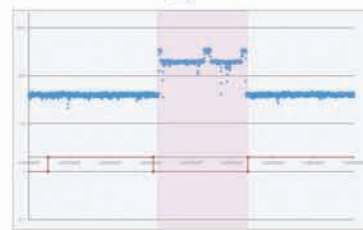
MLL\_10619



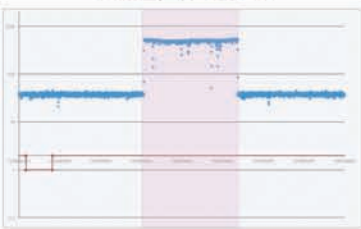
MLL\_11932



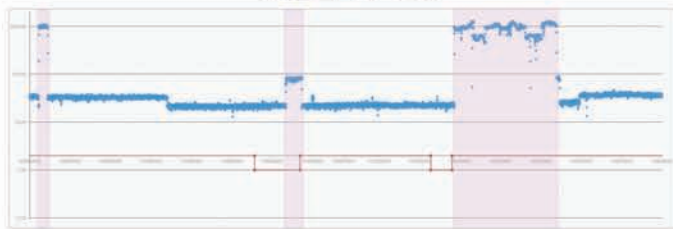
MLL\_11933



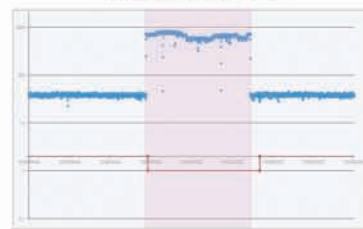
MLL\_11934



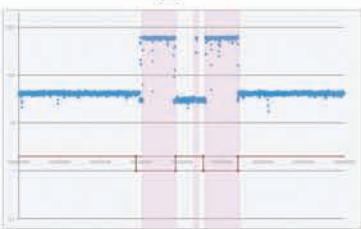
MLL\_11935



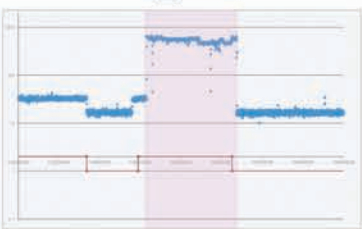
MLL\_11936



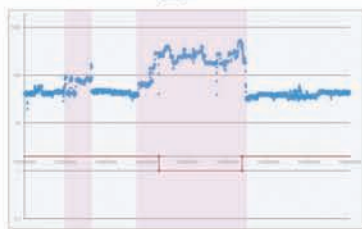
MLL\_11937



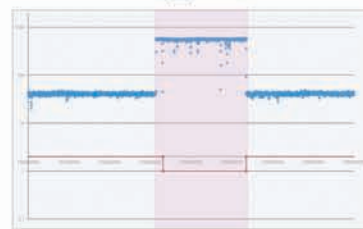
MLL\_11938



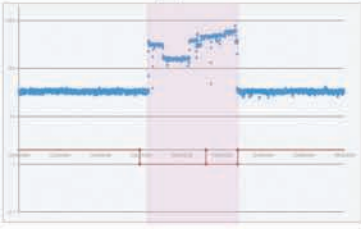
MLL\_11939



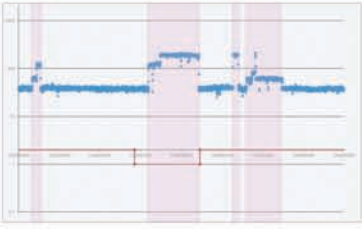
MLL\_11940



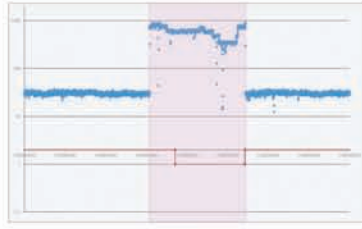
MLL\_11941



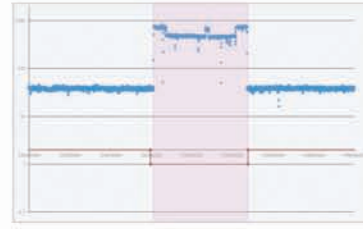
07B60



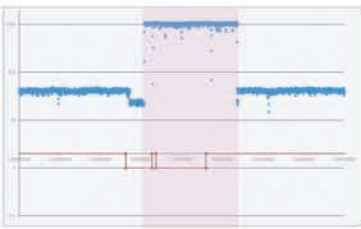
1262-09



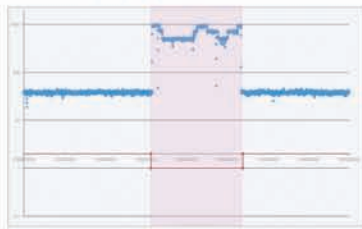
757-02



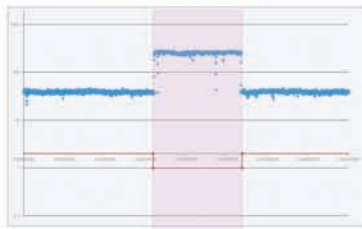
756-04



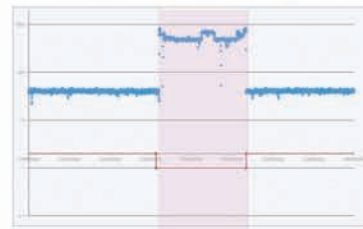
1-07KM6821



3-06PB4872



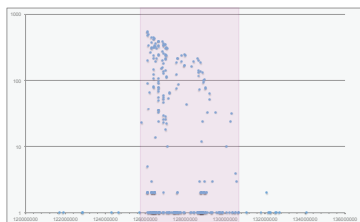
4-09KM0664



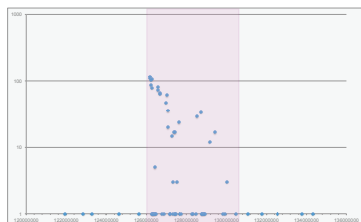
c

# Randomness of segment order

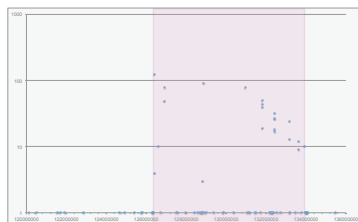
MLL\_11929



MLL\_10598



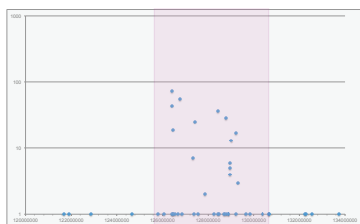
MLL\_11930



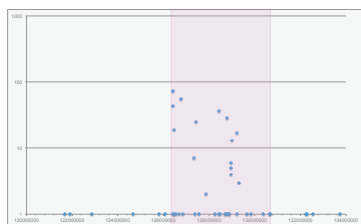
MLL\_11931



MLL\_12445



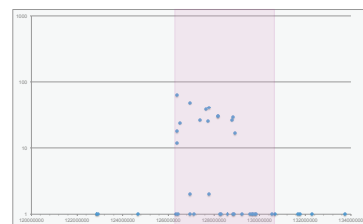
MLL\_10619



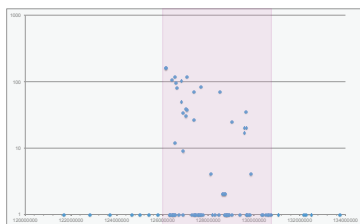
MLL\_11932



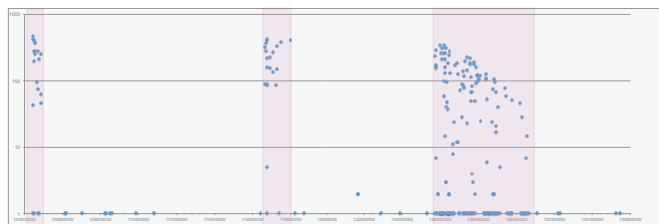
MLL\_11933



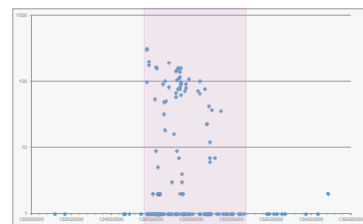
MLL\_11934



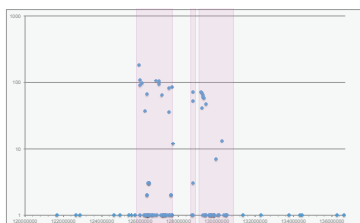
MLL\_11935



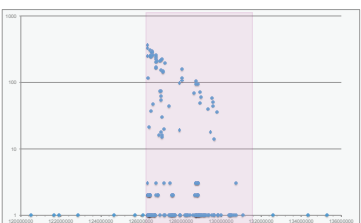
MLL\_11936



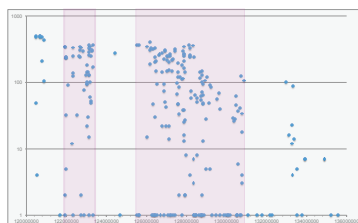
MLL\_11937



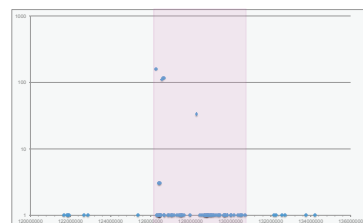
MLL\_11938



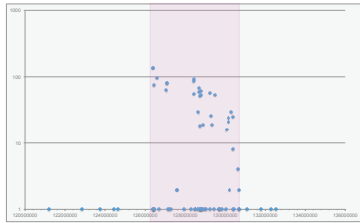
MLL\_11939



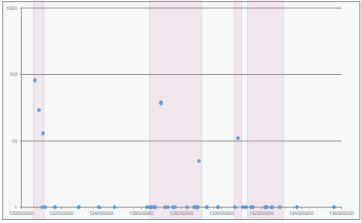
MLL\_11940



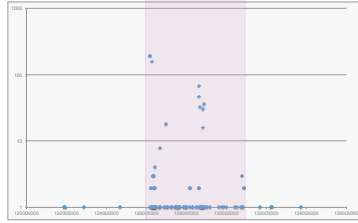
MLL\_11941



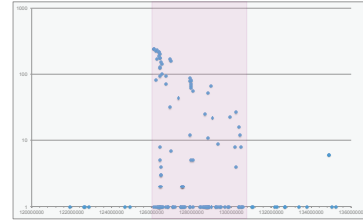
07B60



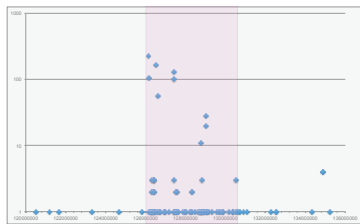
1262-09



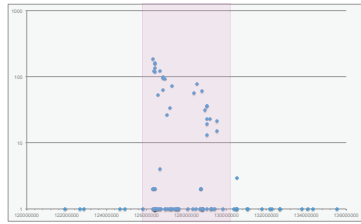
757-02



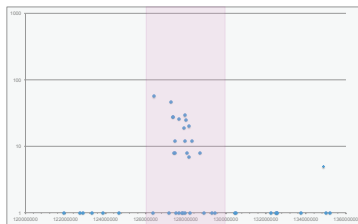
756-04



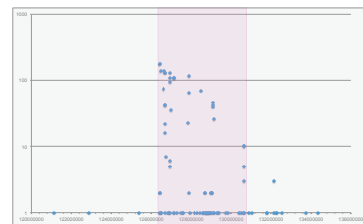
1-07KM6821



3-06PB4872

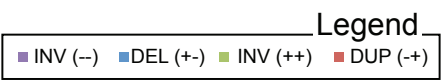


4-09KM0664

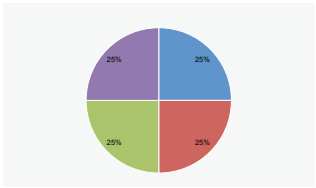


d

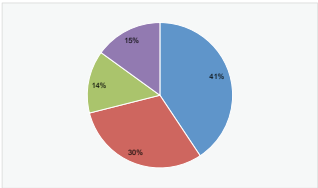
# Randomness of fragment joins



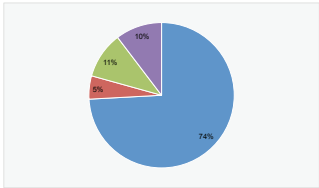
Positive control



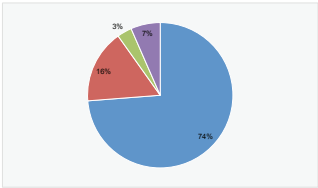
MLL\_11929



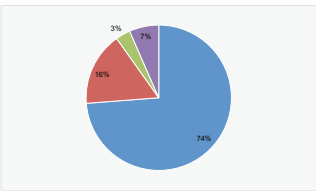
MLL\_10598



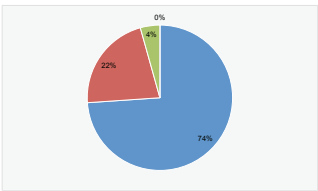
MLL\_11930



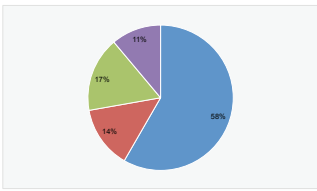
MLL\_11931



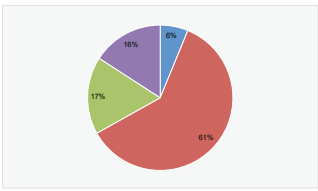
MLL\_12445



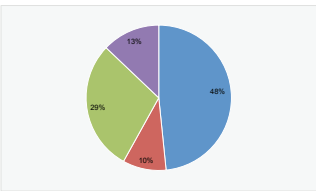
MLL\_10619



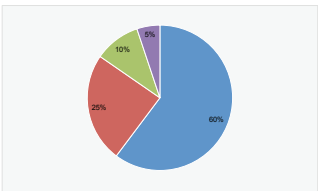
MLL\_11932



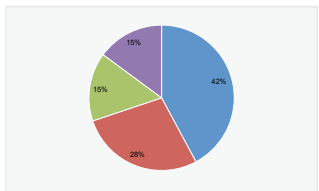
MLL\_11933



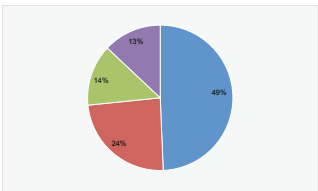
MLL\_11934



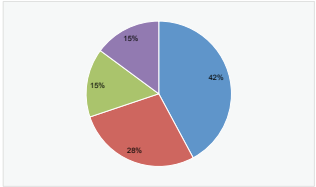
MLL\_11935



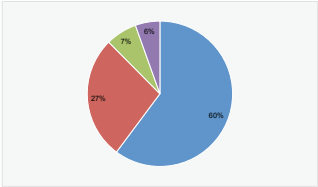
MLL\_11936



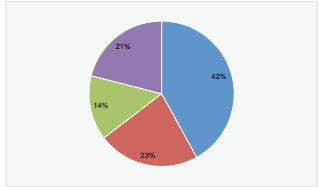
MLL\_11937



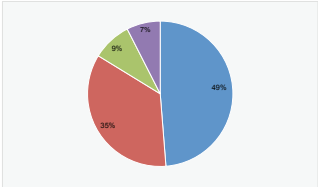
MLL\_11938



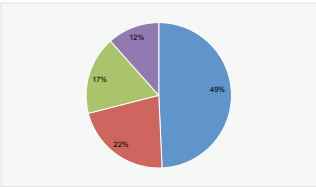
MLL\_11939



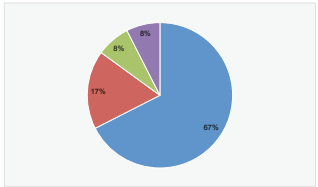
MLL\_11940



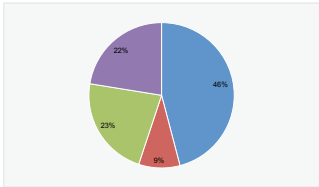
MLL\_11941



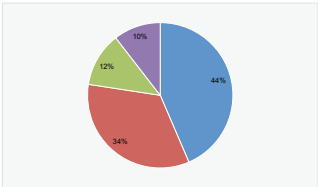
07B60



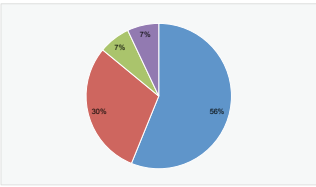
1262-09



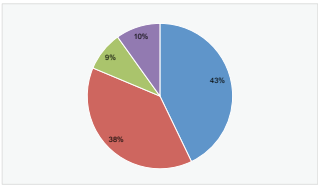
757-02



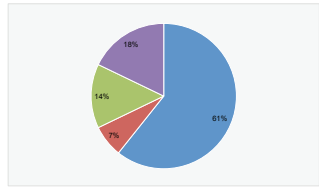
756-04



1-07KM6821



3-06PB4872



4-09KM0664

