

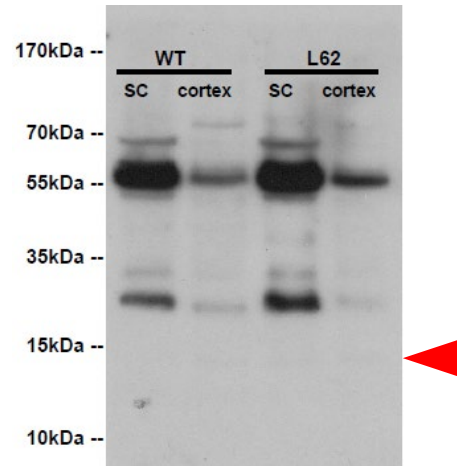
Antibodies

Internal Name	Source	ID	Immunogen	
mAb559	TauRx	F-Syn7 (clone 559)	Recombinant full-length human α -syn	monoclonal
mAb874	TauRx	F-Syn7 (clone 874)	Recombinant full-length human α -syn	monoclonal
mAb736	TauRx	T-Syn8 (clone 736)	Recombinant, truncated human α -syn (aa. 91-326)	monoclonal
Clone 42	BD Biosciences	15895639	Truncated rat Synuclein-1 (aa. 15-123)	monoclonal
Sc-69977	Santa Cruz	Sc-69977 (3H2897)	Recombinant human α -syn	monoclonal
Sc-7011R	Santa Cruz	Sc-7011R (C20)	C-terminus of human α -syn	polyclonal
mAb211	Santa Cruz	sc-12767 (211)	Peptide (aa. 121-125) of human α -syn	monoclonal
Ab1903	Abcam	Ab1903 (4D6)	Recombinant full-length human α -syn	monoclonal
mAB204 (=Syn 204)	Santa Cruz	sc-32280 (204)	Recombinant human α -syn	monoclonal

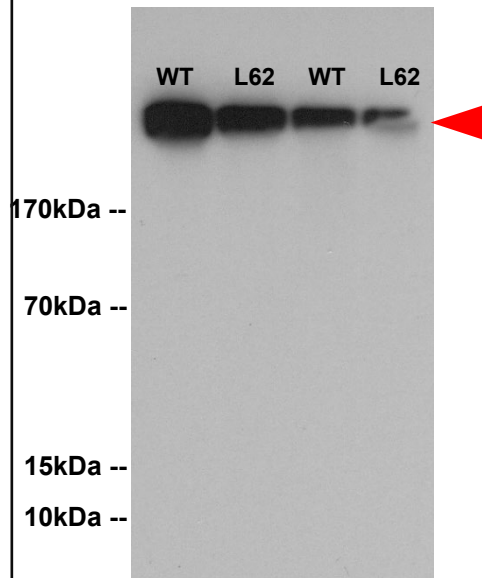
16,000 x g supernatant (urea or tris) / cortex or spinal cord (sc), 6 months

mAb559

SDS PAGE/urea extraction

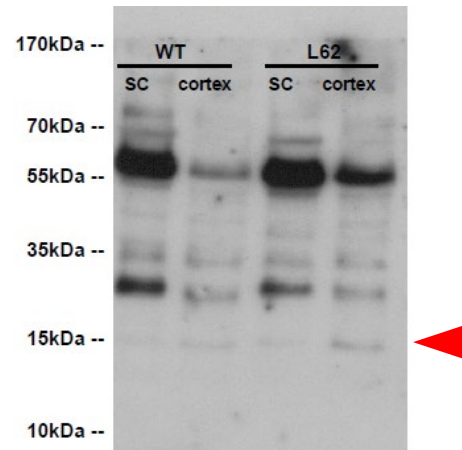


Native PAGE/native extraction

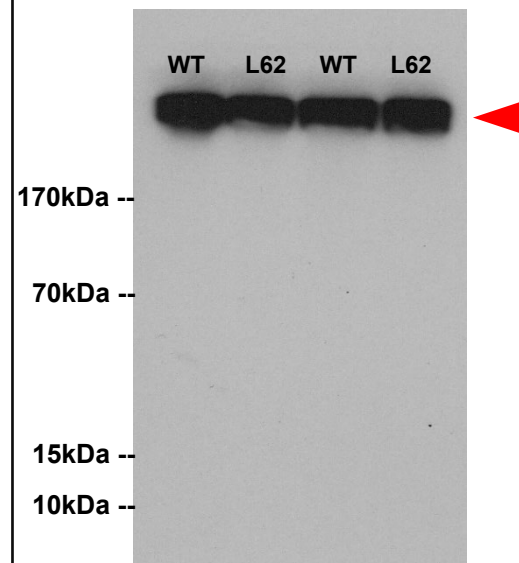


mAb874

SDS PAGE/urea extraction

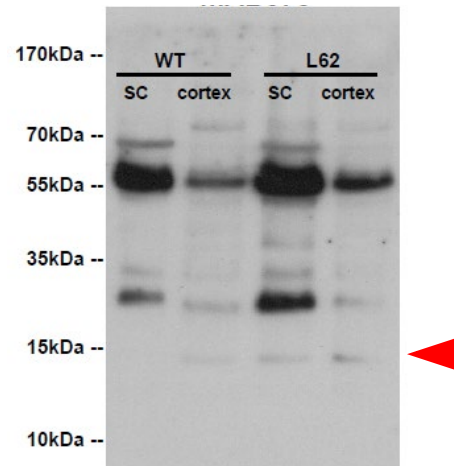


Native PAGE/native extraction

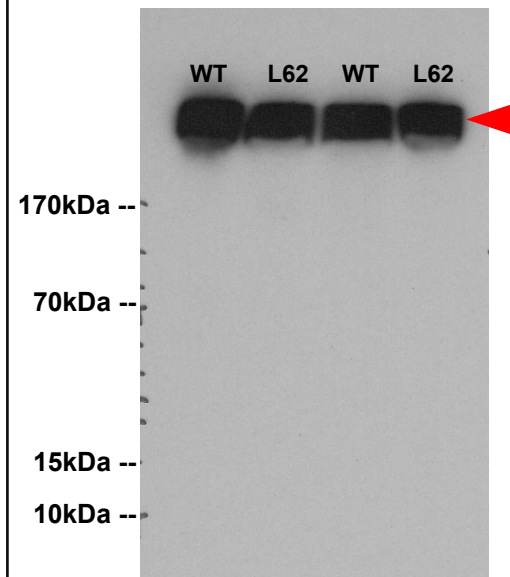


mAb736

SDS PAGE/urea extraction

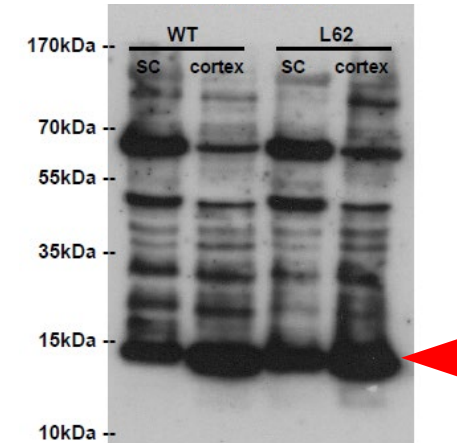


Native PAGE/ native extraction

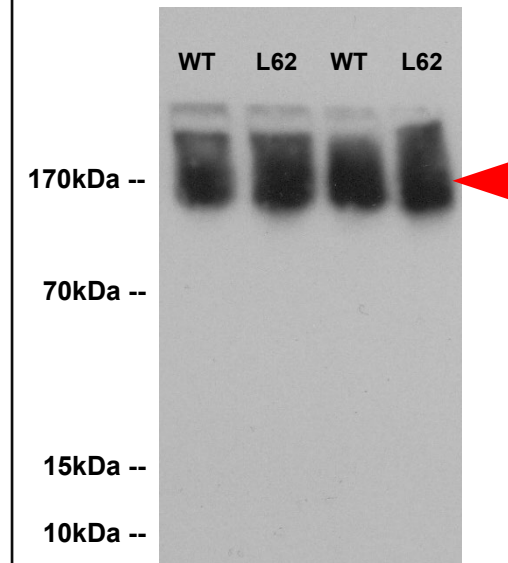


Clone42

SDS PAGE/urea extraction

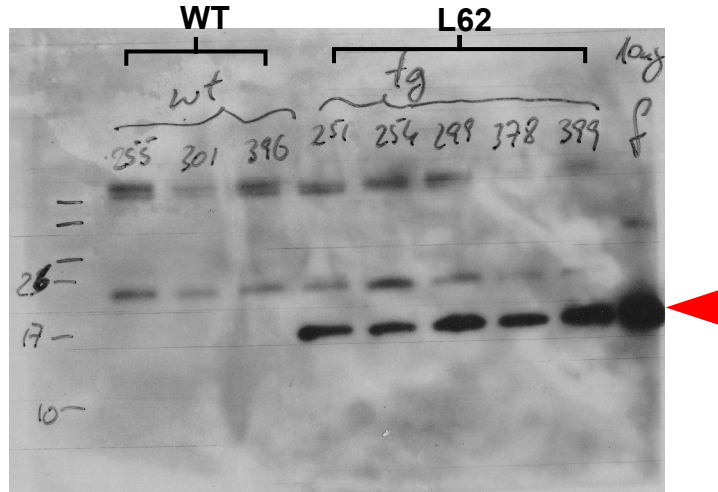


Native PAGE/native extraction

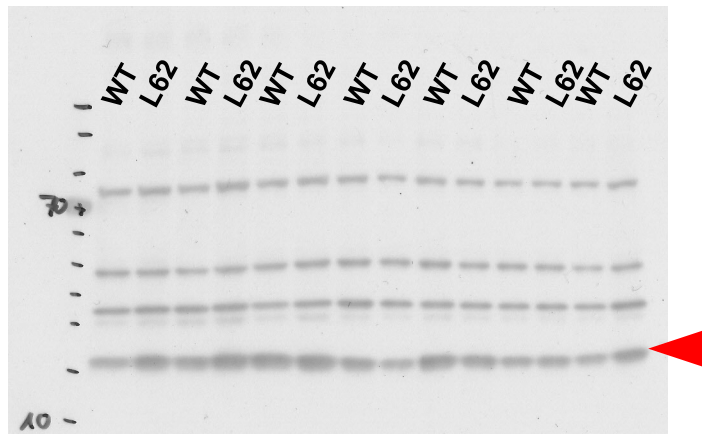


16,000 x g supernatant (urea) / cortex, 6 or 12 months

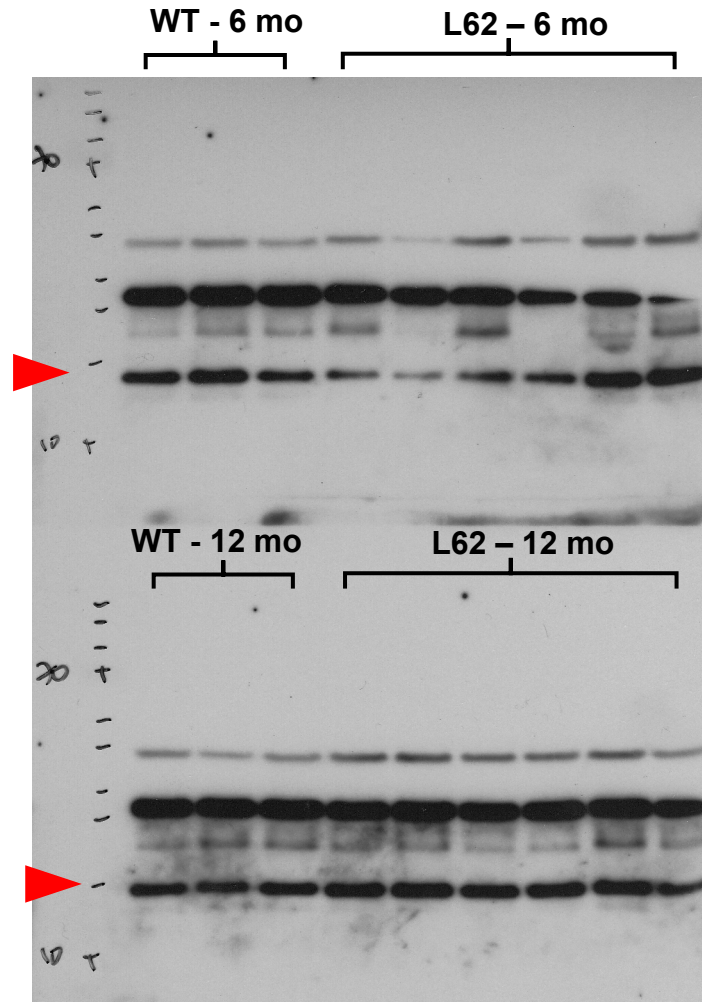
mAb211 SDS PAGE/urea extraction



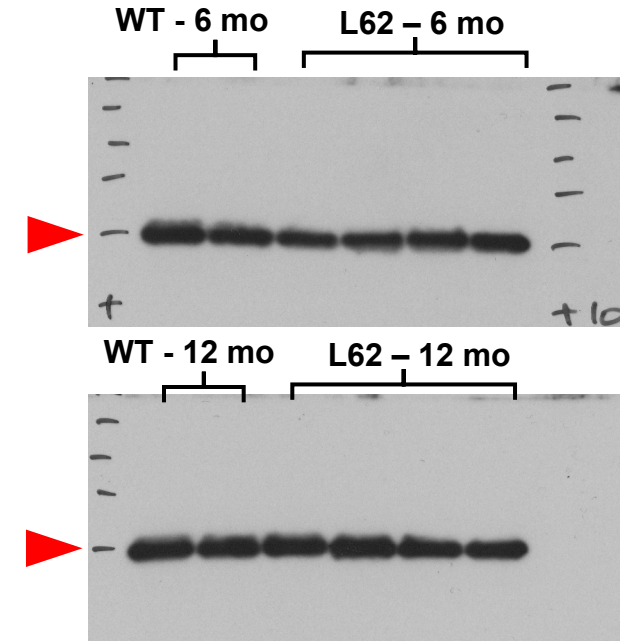
Ab1903 SDS PAGE/urea extraction



Sc-69977 SDS PAGE/urea extraction



Sc-7011R SDS PAGE/urea extraction



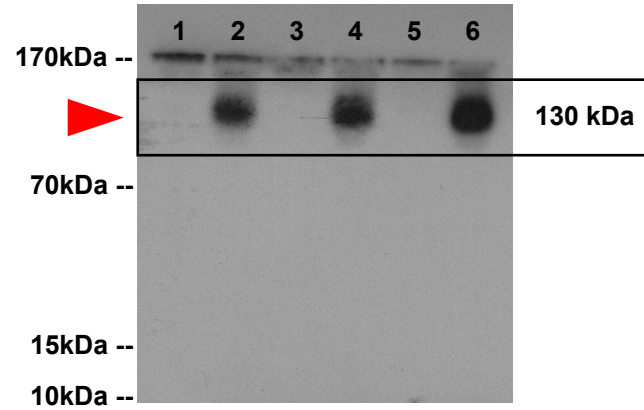
16,000 x g supernatant (urea or tris) / cortex, 6 or 20 months

mAb204

Native PAGE

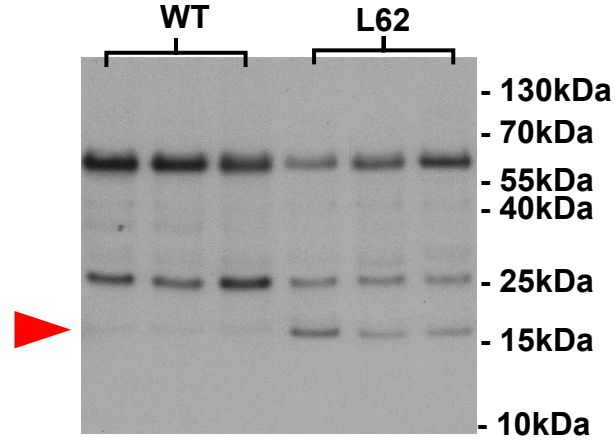
1, 3, 5: WT, 20 Mo

2, 4, 6: Line 62, 20 Mo



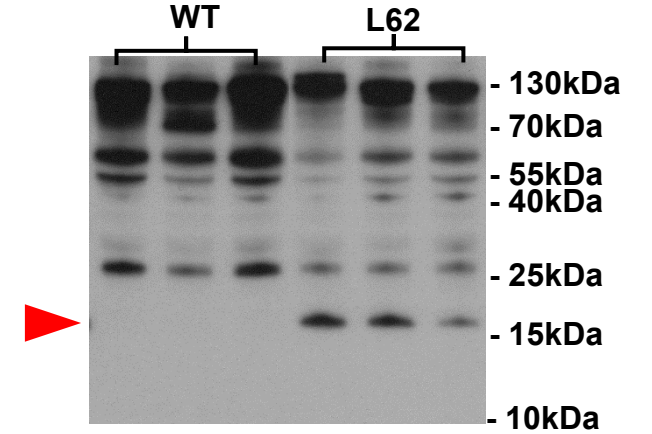
mAb204

SDS PAGE/ urea supernatant



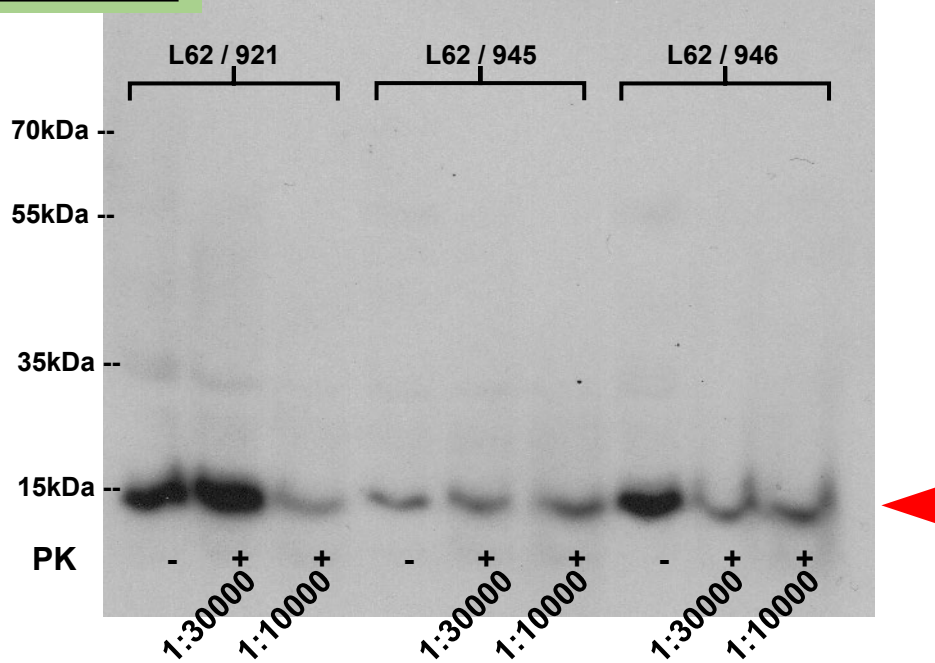
mAb204

SDS PAGE/ Tris supernatant



mAb204

SDS PAGE/ Tris supernatant with proteinase K (PK) cleavage



Summary

ID	Slide	Specificity	Reactivity	Recognition
mAb559	2	Mouse and human α -synuclein	Multiple bands	Labels both mouse AND human- α -synuclein at ~15kD
mAb874	2	Mouse α -synuclein	Multiple bands	Labels ONLY mouse- α -synuclein at ~15kD
mAb736	2	Mouse and human α -synuclein	Multiple bands	Labels both mouse AND human- α -synuclein at ~15kD
Clone 42	2	Mouse and human α -synuclein	Multiple bands	Labels both mouse AND human- α -synuclein at ~15kD
Sc-69977	3	Mouse α -synuclein	Multiple bands	Labels ONLY mouse- α -synuclein at ~15kD
Sc-7011R	3	Mouse α -synuclein	Single band	Labels ONLY mouse- α -synuclein at ~15kD
mAb211	3	Human α -synuclein	Multiple bands	Labels ONLY human- α -synuclein at ~15kD
Ab1903	3	Mouse and human α -synuclein	Multiple bands	Labels both mouse AND human- α -synuclein at ~15kD
mAb204 (=Syn 204)	4-5	Human α -synuclein	Multiple bands	Labels ONLY human- α -synuclein at ~15kD Labels ONLY human- α -synuclein at ~130kD