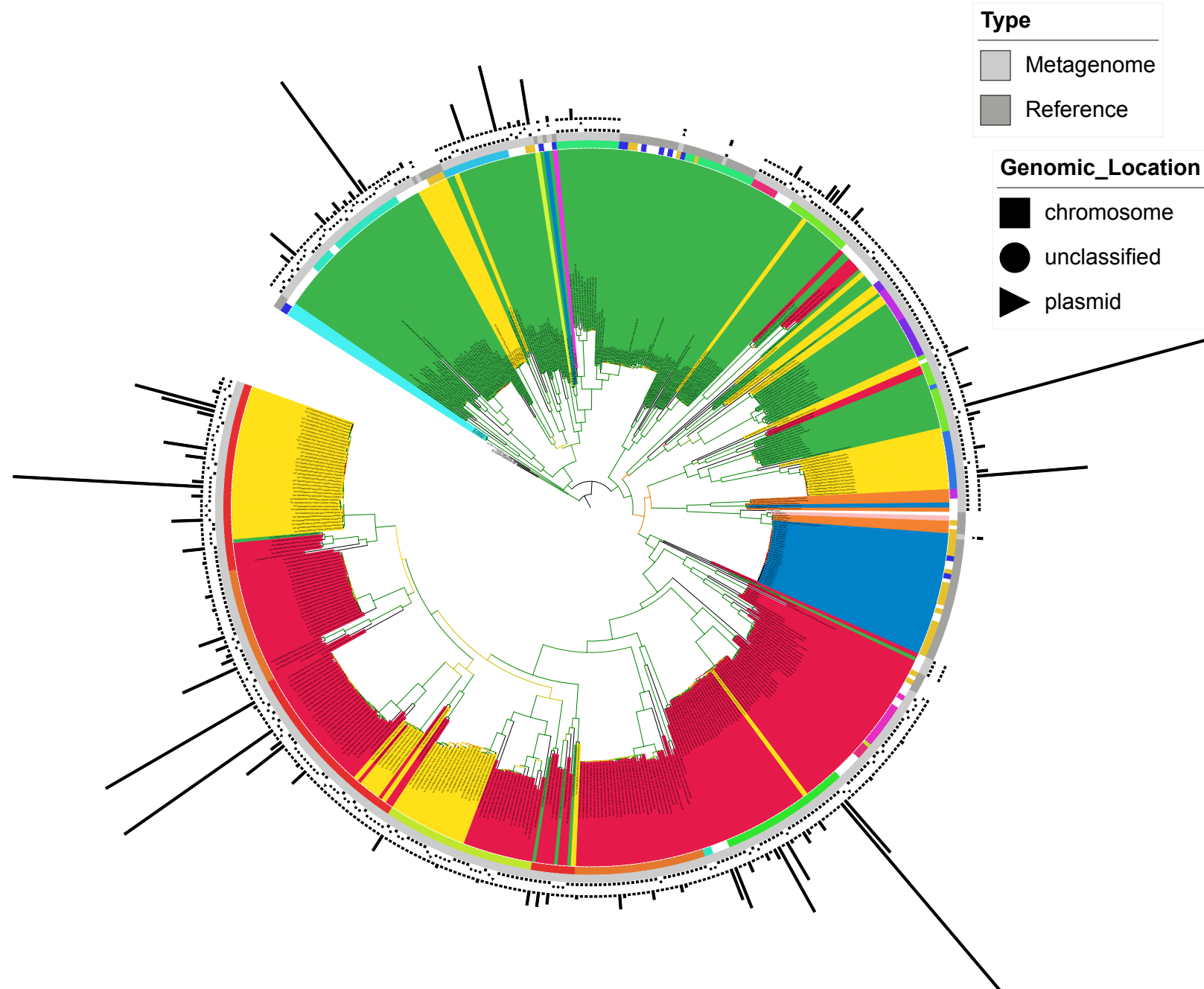


Tree scale: 1

MCR Group	Genus
MCR-3	Sutterella
MCR-5	Duodenibacillus
MCR-4	Escherichia
MCR-2	Escherichia
MCR-1	CAG-521
MCR-8	CAG-495
MCR-9	Parasutterella
MCR-6	Aeromonas
MCR-7	Succinivibrio
	Vibrio
	51-20
	Klebsiella
	Campylobacter_A
	Campylobacter_B
	Stenotrophomonas
	Oxalobacter



Type
Metagenome
Reference

Genomic_Location
chromosome
unclassified
plasmid