

RESEARCH ARTICLE

Agonistic autoantibodies against β 2-adrenergic receptor influence retinal microcirculation in glaucoma suspects and patients

Bettina Hohberger^{1*}, Sami Hosari¹, Gerd Wallukat², Rudolf Kunze³, Johann Krebs¹, Meike Müller¹, Till Hennig¹, Robert Lämmer¹, Folkert Horn¹, Luis E. Muñoz⁴, Martin Herrmann⁴, Christian Mardin¹

1 Department of Ophthalmology, University of Erlangen-Nürnberg, Friedrich-Alexander-University of Erlangen-Nürnberg, Erlangen, Germany, **2** Max Delbrück Center for Molecular Medicine, Berlin, Germany, **3** Science Office, Berlin-Buch, Campus Max Delbrück Center for Molecular Medicine, Berlin, Germany, **4** Department of Internal Medicine 3—Rheumatology and Immunology, University of Erlangen-Nürnberg, Friedrich-Alexander University (FAU) Erlangen-Nürnberg, Germany

* These authors contributed equally to this work.

* bettina.hohberger@uk-erlangen.de



OPEN ACCESS

Citation: Hohberger B, Hosari S, Wallukat G, Kunze R, Krebs J, Müller M, et al. (2021) Agonistic autoantibodies against β 2-adrenergic receptor influence retinal microcirculation in glaucoma suspects and patients. PLoS ONE 16(5): e0249202. <https://doi.org/10.1371/journal.pone.0249202>

Editor: Sanjoy Bhattacharya, Bascom Palmer Eye Institute, UNITED STATES

Received: September 18, 2020

Accepted: March 14, 2021

Published: May 7, 2021

Copyright: © 2021 Hohberger et al. This is an open access article distributed under the terms of the [Creative Commons Attribution License](https://creativecommons.org/licenses/by/4.0/), which permits unrestricted use, distribution, and reproduction in any medium, provided the original author and source are credited.

Data Availability Statement: All relevant data are within the paper.

Funding: The Erlangen Glaucoma Registry was funded by the German Research Society (DFG) from 1991 - 2009. Yet, no specific funding was received for the present study of the Erlangen Glaucoma Registry.

Competing interests: Hohberger B, none; Hosari S, none; Wallukat G, Berlin Cures (emblyoyed), patent EP1832600A1: Peptides against

Abstract

Purpose

Agonistic β 2-adrenergic receptor autoantibodies (β 2-agAAb) have been observed in sera of patients with ocular hypertension and open-angle glaucoma (OAG). They target the β 2-receptors on trabecular meshwork, ciliary body and pericytes (Junemann et al. 2018; Hohberger et al. 2019). In addition to their influence on the intraocular pressure, an association to retinal microcirculation is discussed. This study aimed to investigate foveal avascular zone (FAZ) characteristics by en face OCT angiography (OCT-A) in glaucoma suspects and its relationship to β 2-agAAb status in patients with OAG.

Material and methods

Thirty-four patients (28 OAG, 6 glaucoma suspects) underwent standardized, clinical examination including sensory testing as white-on-white perimetry (Octopus G1, mean defect, MD) and structural measures as retinal nerve fibre layer (RNFL) thickness, neuroretinal rim width (BMO-MRW), retinal ganglion cell layer (RGCL) thickness, and inner nuclear layer (INL) thickness with high-resolution OCT. FAZ characteristics were measured by OCT-A scans of superficial vascular plexus (SVP), intermediate capillary plexus (ICP), and deep capillary plexus (DCP). FAZ-R was calculated (area FAZ (SVP)/area FAZ (ICP)). Using cardiomyocyte bioassays we analysed serum samples for the presence of β 2-agAAb.

Results

(I) Total mean FAZ area [mm^2]: 0.34 ± 0.16 (SVP), 0.24 ± 0.12 (ICP), and 0.49 ± 0.24 (DCP); mean FAZ-R 1.58 ± 0.94 . No correlation was seen for FAZ-R with MD, RNFL, BMO-MRW,

autoantibodies associated with glaucoma and use of these peptides; Kunze R, patent EP1832600A1: Peptides against autoantibodies associated with glaucoma and use of these peptides; Krebs J, none; Müller M, none; Hennig T, none; Lämmer R, none; Horn F, none; Muñoz L.E., none; Herrmann M, patent EP1832600A1: Peptides against autoantibodies associated with glaucoma and use of these peptides; Mardin C, none. This does not alter our adherence to PLOS ONE policies on sharing data and materials.

RGCL thickness and INL thickness ($p > 0.05$). (II) $\beta 2$ -agAAb have been observed in 91% patients and showed no correlation with MD, RNFL, BMO-MRW, RGCL thickness and INL thickness ($p > 0.05$). (III) FAZ-R correlated significantly with the $\beta 2$ -agAAb-induced increase of the beat rate of cardiomyocyte ($p = 0.028$).

Conclusion

FAZ characteristics did not correlate with any glaucoma associated functional and morphometric follow-up parameter in the present cohort. However, level of $\beta 2$ -agAAb showed a significantly correlation with FAZ-ratio. We conclude that $\beta 2$ -agAAb might be a novel biomarker in glaucoma pathogenesis showing association to FAZ-ratio with OCT-A.

Introduction

Glaucoma is known as a multifactorial neurodegenerative disease. The exact pathomechanism is still elusive. Thus, several factors seem to act and interact within this neurodegenerative disorder. Next to an increased intraocular pressure (IOP), being the main risk factor, e.g. oxidative stress [1], trace elements [2], an altered trabecular meshwork [3], immunological [4] and neuroinflammatory processes [5] are involved. In addition vascular dysregulation was seen as pathogenetic agent [6]. It is supposed that due to an insufficient nutritive support of retinal ganglion cells via altered microcirculation neurodegeneration could be promoted. A restricted autoregulation with additional vasospasms may enhance this pathophysiologic changes [7].

OCT-angiography (OCT-A) offers the diagnostic option to visualize and quantify retinal microcirculation with subsequent software tools (e.g. Erlangen Angio Tool [8]). Heidelberg Spectralis II OCT-A (Heidelberg, Germany) is able to scan macular microcirculation in three layers: superficial vascular plexus (SVP, thickness: 80 μm), intermediate capillary plexus (ICP, thickness: 50 μm), and deep capillary plexus (DCP, thickness: 40 μm). These layers correspond well with anatomical structures [9]: SVP corresponds mainly to the ganglion cell layer (GCL), ICP to the inner plexiform layer (IPL) and inner nuclear layer (INL), and DCP mainly to the outer plexiform layer (OPL, Fig 1).

Glaucoma damage focuses on GCL loss, thus, we hypothesize that changes in retinal microcirculation might be accentuated in SVP and adjacent ICP, potentially most obvious in foveal avascular zone characteristics (FAZ) [10]. A potential link between microvascular retinal alterations and immunological findings in glaucoma might be mirrored by specific agonistic autoantibodies against the $\beta 2$ -adrenoceptors ($\beta 2$ -agAAb), as $\beta 2$ -adrenoreceptors ($\beta 2$ -AR) are present on pericytes of retinal microvessels [11]. We observed these $\beta 2$ -agAAb in a high percentage in sera of patients with primary (POAG), secondary open-angle glaucoma (SOAG) or ocular hypertension (OHT), yet not in controls [12, 13]. The target of $\beta 2$ -agAAb is additionally present on cells of the trabecular meshwork (TM) and ciliary body [14, 15], both involved in regulation of IOP. Thus, it is assumed that $\beta 2$ -agAAb might be involved in the pathological increase of IOP via rise of outflow resistance in the TM and increase of production of aqueous humor in the ciliary body. The hypothesis of an increase of outflow resistance is supported by data of Putney et al., describing an increased volume of trabecular meshwork cells in patients with glaucoma. The altered cell volume was reportedly induced by osmotic changes due to $\text{Na}^+ - \text{K}^+ - \text{Cl}^-$ cotransporters, activated by β -adrenergic stimulation [16]. Clinical data of a proof-of-principle study supported the hypothesis of a potential involvement of $\beta 2$ -agAAb in

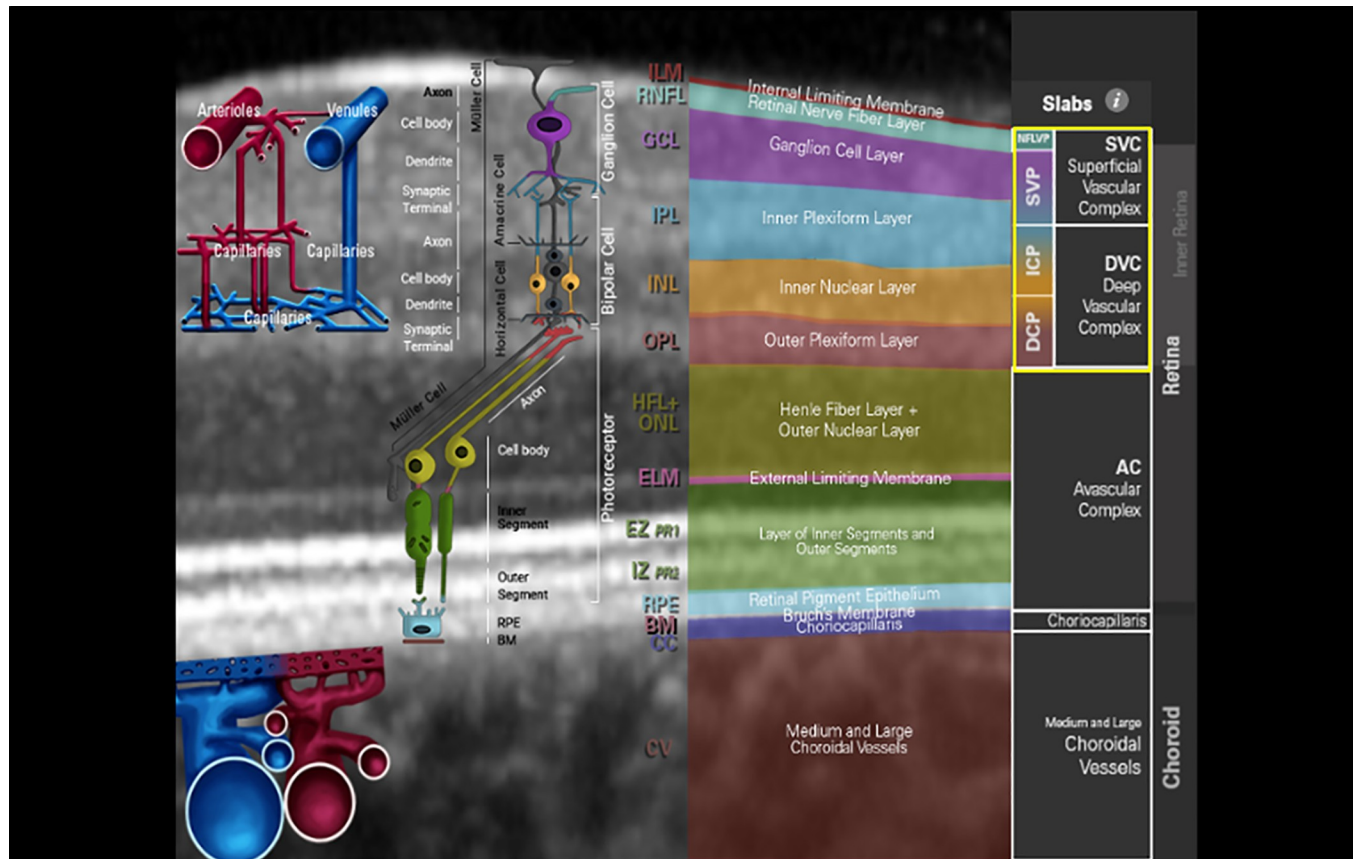


Fig 1. Structure OCT detail of the macula with the corresponding structural OCT layers and OCT-A slabs of the inner retina (yellow box). Image courtesy by Heidelberg Engineering, Heidelberg, Germany.

<https://doi.org/10.1371/journal.pone.0249202.g001>

glaucoma pathogenesis, as IOP showed a transient decrease after immunadsorption of all immunoglobulins including $\beta 2$ -agAAb [12].

The aim of the present study was to investigate foveal avascular zone (FAZ) characteristics of SVP, ICP, and DCP by en face OCT-A in glaucoma suspects and open-angle glaucoma patients (OAG) in relation to their corresponding $\beta 2$ -agAAb status.

Materials and methods

Patients

Thirty-four patients were recruited from the Department of Ophthalmology and Eye Hospital, Friedrich-Alexander-University Erlangen-Nürnberg (Erlangen Glaucoma Registry, ISSN 2191-5008, CS-2011; NTC00494923 [17]): 6 glaucoma suspects (4 ocular hypertension, OHT; 2 pre-perimetric OAG), 28 patients with OAG. Demographic data for group and subgroups are displayed in Table 1.

All patients underwent a standardized ophthalmological examination, which included slit-lamp biomicroscopy, funduscopy and Goldmann applanation tonometry. Additionally, white-on-white perimetry (Octopus 500, program G1, Interzeag, Schlieren, Switzerland; mean defect (MD), $n = 34$) and measurements of the global retinal nerve fiber layer (RNFL, $n = 33$), Bruch's membrane opening—minimum rim width (BMO-MRW, $n = 33$), retinal ganglion cell layer (RGCL, $n = 33$) and inner nuclear layer (INL, $n = 33$) were done (Heidelberg OCT II

Table 1. Demographic data for total cohort and subdivided into glaucoma suspects and glaucoma patients: Age, gender, intraocular pressure at the day of examination with glaucoma therapy (IOP), number of antiglaucomatous eye drops, best corrected visual acuity (BCVA): Mean±SD; number family history of glaucoma, diabetes, hypertension.

	Total	Glaucoma suspects	Patients with OAG
Age	67.1±12.0	69.5±14.0	66.6±12.0
Gender (female/male)	16/18	2/4	14/14
IOP	15.0±3.9	13.5±2.4	15.3±4.1
Number of antiglaucomatous eye drops	1.4±1	1.7±1	1.4±1
BCVA	0.8±0.18	0.85±0.08	0.84±0.20
Family history for glaucoma	17	1	16
Diabetes	1	0	1
Hypertension	20	3	17

<https://doi.org/10.1371/journal.pone.0249202.t001>

Spectralis, version 1.9.10.0, Heidelberg Engineering, Heidelberg, Germany). Diagnosis of glaucoma suspects and POAG were based according to the criteria of the Erlangen Glaucoma registry [17]. Glaucomatous optic disc was classified after Jonas [18]. If both eyes met the inclusion criteria, data of one eye were chosen randomly for statistical analysis. Every participant provided informed written consent. The study protocol was performed in accordance with the tenets of the Declaration of Helsinki and was approved by the local ethics committee of the university of Erlangen-Nürnberg.

Glaucoma suspects

Diagnosis of glaucoma suspects was based on a repeated (≥ 2 times) increased IOP > 21 mmHg. Visual fields showed no glaucomatous scotoma. The optic disc was with (diagnosis: pre-perimetric OAG, classified as proposed by Jonas, [18]) or without glaucomatous alterations (diagnosis: OHT).

POAG

The diagnosis of POAG was based on an open anterior chamber angle. IOP had to be increased (> 21 mmHg), repeated ≥ 2 times. The optic disc showed glaucomatous alterations according to the classification after Jonas [18]. Visual field yielded glaucomatous scotoma (confirmed at least once): ≥ 3 adjacent test points having a deviation ≥ 5 dB and with one test point with a deviation > 10 dB lower than normal or ≥ 2 adjacent test points with a deviation ≥ 10 dB or at least 3 adjacent test points with a deviation ≥ 5 dB abutting the nasal horizontal meridian or a mean visual field defect of > 2.6 dB.

Cardiomyocyte bioassay

For the functional experiments we used neonatal rat cardiomyocytes in primary culture. The cells were prepared freshly every week with the permission 49004/19 of the Max Delbrück Centre for Molecular Medicine. Cell culture of cardiac myocytes derived from heart ventricle of 1–2 day-old Sprague-Dawley rats [19]. We included this information into the revised version of the manuscript. After digestion with a 0.25% solution of crude porcine trypsin (Serva, Germany), the cells were dispersed and suspended in a SM20-I medium (Biochrom, Germany), glutamine (Serva, Germany), containing penicillin (Heyl, Germany), streptomycin (HEFA Pharma; Germany), 10% heat-inactivated neonatal calf serum (Gibco, Germany), hydrocortisone (Merck, Germany), and fluorodeoxyuridine (Serva, Germany). The

cardiomyocyte cells were seeded with a field density of 160,000 cells/cm². The culture medium was refaced after 24 hours. Previous to stimulation the cells were cultured for 3–4 days at 37°C. The medium was renewed with fresh culture solution 2 hours before start of the experiments. Beating rate was counted of 7–10 selected spontaneously beating cardiomyocyte or synchronously contracting cell clusters per flask for 15 seconds, which were placed on a heated stage of an inverted microscope at 37°C (cut-off < 2.0 Units, U). The cardiomyocytes were incubated with the immunoglobulin fractions of each probands' sera (duration: 60 min; dilution of 1:40). The change in beating rate after incubation with each probands' sera was measured, respectively. 1 Unit (U) reflects 4 beats/min. Cutoff was 2 U.

OCT-angiography

We performed en face OCT-A measurements employing a Heidelberg OCT II Spectralis device (Heidelberg, Germany). The OCT-A scan recorded a retinal slab of 2.9 mm x 2.9 mm with a 15° angle and a lateral resolution of 5.7 μm/pixel. Data were exported and analyzed by the Erlangen Angio-Tool (EA-Tool, Matlab; The MathWorks, Inc., R2017b) [20]. EA-Tool used binarization by using the Otsu thresholding algorithm [21] and Frangi vesselness filter [22]. En face OCT-A application in combination with EA-Tool allowed analysis of FAZ area in three different layers: superficial vascular plexus (SVP), intermediate capillary plexus (ICP), and deep capillary plexus (DCP). We present FAZ data for SVP, ICP and DCP, respectively.

Statistical analysis

Statistical analysis was done using SPSS (version 21.0) and Excel (version 2010). The FAZ-to-FAZ-ratio (FAZ-R) between FAZ of SVP and ICP was calculated. Data were presented by mean ± standard deviation and percentage. T-test and correlation analysis were performed.

Results

OCT-angiography

Functional and morphometric data of Spectralis OCT II measurements are displayed in Fig 2.

OCT-A data of all patients showed a mean FAZ of 0.34±0.16 mm² (range: 0.13 mm²–0.92 mm²) in SVP, 0.24±0.12 mm² (range: 0.08 mm²–0.59 mm²) in ICP, and 0.49±0.24 mm² (range: 0.18 mm²–1.09 mm²) in DCP. FAZ-R yielded a mean of 1.58±0.94.

Subgroup analysis showed a mean FAZ of 0.21±0.04 mm² (range: 0.13 mm²–0.26 mm²) in SVP, 0.12±0.05 mm² (range: 0.08 mm²–0.21 mm²) in ICP, and 0.29±0.06 mm² (range: 0.22 mm²–0.37 mm²) in DCP in glaucoma suspects. FAZ-R of glaucoma suspects yielded a mean of 1.81±0.63. Patients with OAG showed a mean FAZ of 0.36±0.17 mm² (range: 0.17 mm²–0.92 mm²) in SVP, 0.26±0.12 mm² (range: 0.12 mm²–0.59 mm²) in ICP, and 0.53±0.24 mm² (range: 0.18 mm²–1.09 mm²) in DCP. Additionally, FAZ-R yielded a mean of 1.53±0.99.

No significant correlation was seen for FAZ-R with MD (p>0.05), RNF thickness (p>0.05), BMO-MRW (p>0.05), RGC thickness (p>0.05), and INL thickness (p>0.05) for group (total cohort) and subgroup analysis (glaucoma suspects, OAG), respectively.

β2-agAAb seropositivity

A β2-agAAb seropositivity was observed in 91% of all patients with a mean increase of beat in comparison to the basal beating rate of 4.5±1 U (range: 2.3–7.5 U, Fig 3). Only 9% of all patients turned out to be seronegative for β2-agAAb (<2.0 U).

Primary functional and morphometric data considering β2-agAAb seropositivity are presented in Table 2.

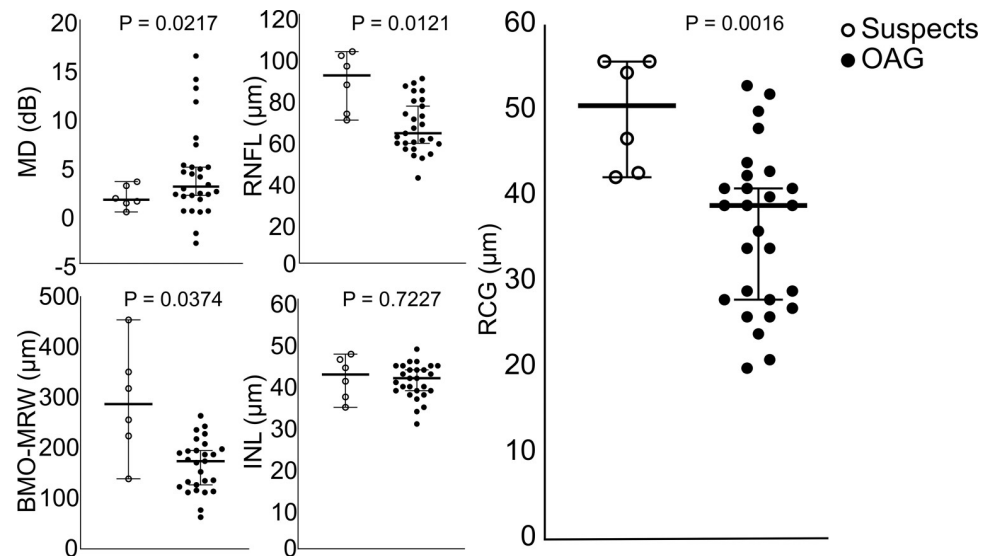


Fig 2. Perimetric and morphometric data of total, glaucoma suspects and patients with open-angle glaucoma (OAG): Mean defect (MD), retinal nerve fiber (RNF), Bruchs' membrane opening—minimum rim width (BMO-MRW), retinal ganglion cell (RGC), inner nuclear layer (INL).

<https://doi.org/10.1371/journal.pone.0249202.g002>

β 2-agAAb seropositive patients showed no correlation of β 2-agAAb beat rate with MD ($p > 0.05$), RNF thickness ($p > 0.05$), BMO-MRW ($p > 0.05$), RGC thickness ($p > 0.05$) and INL thickness ($p > 0.05$) for group (total cohort) and subgroup (glaucoma suspects, OAG) analysis, respectively (Fig 4).

Considering β 2-agAAb seropositivity a mean FAZ of $0.34 \pm 0.17 \text{ mm}^2$ (range: 0.13 mm^2 – 0.92 mm^2) was observed in β 2-agAAb seropositive and $0.32 \pm 0.20 \text{ mm}^2$ (range: 0.20 mm^2 – 0.55 mm^2) in β 2-agAAb seronegative patients for the SVP layer. Data of ICP showed a mean FAZ of $0.24 \pm 0.13 \text{ mm}^2$ (range: 0.08 mm^2 – 0.59 mm^2) in β 2-agAAb seropositive and $0.27 \pm 0.09 \text{ mm}^2$ (range: 0.21 mm^2 – 0.37 mm^2) in β 2-agAAb negative patients. FAZ of DCP was $0.48 \pm 0.22 \text{ mm}^2$ (range: 0.18 mm^2 – 1.09 mm^2) in β 2-agAAb seropositive and $0.56 \pm 0.42 \text{ mm}^2$ (range: 0.25 mm^2 – 1.03 mm^2) in β 2-agAAb negative patients. We observed a mean FAZ-R of 1.62 ± 0.97 in β 2-agAAb seropositive and 1.13 ± 0.31 in β 2-agAAb negative patients.

A significant correlation of β 2-agAAb beat rate with FAZ-R was observed ($p = 0.028$, Fig 5).

Discussion

Agonistic autoantibodies can be found in several diseases with a common vascular component [19, 23–26]. β 2-agAAb, able to activate the adrenergic β 2-AR have recently been reported in patients with POAG, SOAG and even OHT, yet not in persons with healthy eyes [12, 13]. Thus, we assume that β 2-agAAb is involved in the etiology glaucoma by a common mechanism. A previous study offered an involvement of these β 2-agAAb in the regulation of IOP [12]. β 2-AR expressed on pericytes, on the cells of the ciliary body and the trabecular meshwork [14, 15] represent potential molecular targets that cause the clinical findings. Thus, the present study aimed to investigate a potential involvement of β 2-agAAb on retinal microcirculation in patients with glaucoma. Ninety-one percent of all patients were seropositive for β 2-agAAb, not correlating with standard glaucoma follow-up parameters (MD, RNFL, BMO-MRW, RGCL-, INL thickness). Analysis of FAZ in the three different macula layers yielded that FAZ-R correlated significantly with β 2-agAAb beat rate in β 2-agAAb seropositive patients, yet not with MD, RNF thickness, BMO-MRW, RGC thickness, and INL thickness.

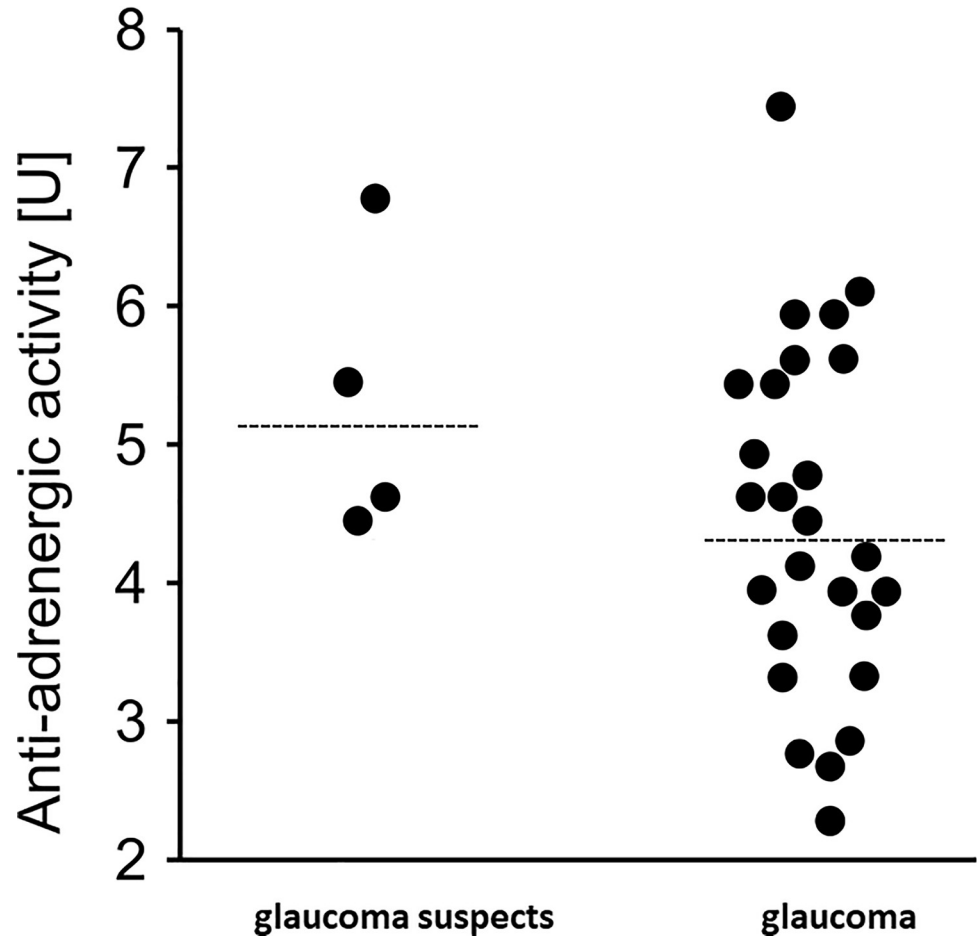


Fig 3. Anti-adrenergic activity β 2-agAAb [U] subdivided in glaucoma suspects and glaucoma patients (raw data; median).

<https://doi.org/10.1371/journal.pone.0249202.g003>

OCT angiography is a novel diagnostic tool to visualize the retinal microcirculation of the macula and the peripapillary region. Invasive techniques (e.g. fluorescence angiography) required the application of dyes with potential side effects. As non-invasive method OCT-A does not include dyes and thus offers a basis for subsequent research issues. A motion contrast algorithm with high spatial resolution yields an improvement of the three-dimensional image of the retinochoroidal vasculature. In the beginning retinal microvasculature could be resolved into 2 different layers (superficial vascular plexus (SVP) and deep capillary plexus (DCP)) [27]

Table 2. Perimetric and morphometric data considering β 2-agAAb seropositivity: Mean defect (MD), retinal nerve fiber (RNFL), Bruchs' membrane opening—minimum rim width (BMO-MRW), retinal ganglion cell (RGCL), inner nuclear layer (INL).

	β 2-agAAb seropositive patients	β 2-agAAb seronegative patients
MD [dB]	3.7±4.0	4.9±7.8
RNFL [μ m]	71.3±14.9	57.0±15.4
BMO-MRW [μ m]	194.3±80.7	128.0±47.5
RGCL [μ m]	39.6±9.9	27.7±10.0
INL [μ m]	40.4±4.0	41.0±7.6

<https://doi.org/10.1371/journal.pone.0249202.t002>

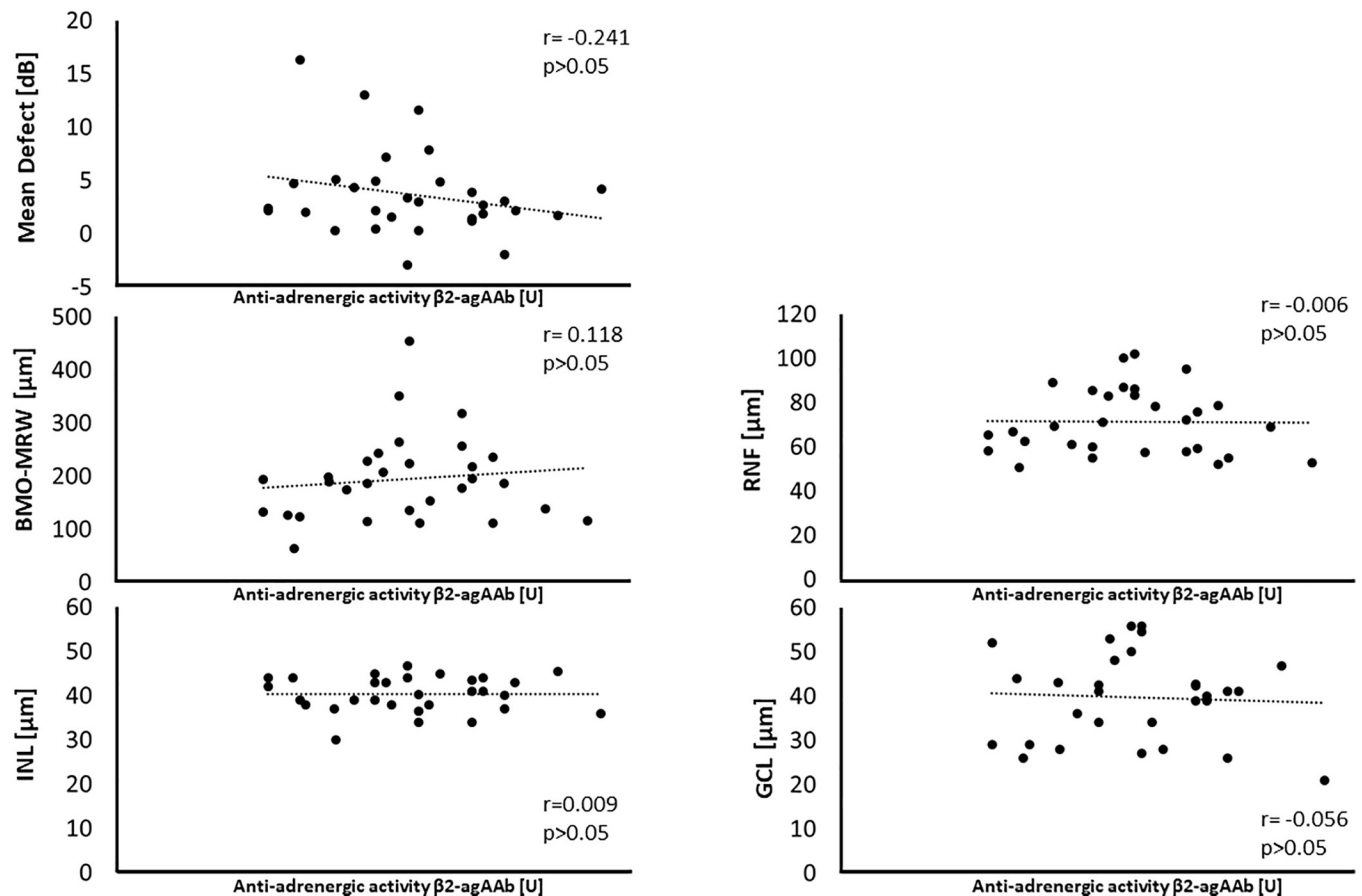


Fig 4. Correlation plots of anti-adrenergic activity $\beta 2$ -agAAb [U] and glaucoma follow-up parameters (mean defect, MD; Bruchs' membrane opening—minimum rim width, BMO-MRW; inner nuclear layer, INL; retinal nerve fiber, RNF; retinal ganglion cell, RGC): We observed no significant correlations for all presented parameters ($p > 0.05$, Pearson's correlation).

<https://doi.org/10.1371/journal.pone.0249202.g004>

with current improvements up to 3 layers in the latest OCT-A tools (SVP, ICP, DCP) [28]. Experimental studies showed a good correlation of these layers with anatomical findings [9]. Spectralis II OCT-A uses a probabilistic full-spectrum amplitude decorrelation algorithm (FSADA), reducing the signal-to-noise ratio with improvement of axial resolution (3.9 $\mu\text{m}/\text{pixel}$) [29]. Additional implementation of projection artefact removal (PAR) tool allows analysis of deeper retinal microvasculature without overlying artefacts. As no commercial software was available for analysis of OCT-A images, a custom made Erlangen-Angio-Tool (EA-Tool) was coded. EA-tool uses a Frangi's vesselness filter for convolving [30] and an Otsu's thresholding algorithm for binarization of the image raw data [21]. As previous data showed an even good reliability for the EA-Tool [20] this was the basis for its use in clinical and research settings.

Clinical studies identified an altered retinal microcirculation in a wide range of retinochoroidal diseases (e.g. diabetic retinopathy, vasculitis, age-related maculopathy) [31–35]. Even glaucoma patients' microcirculation was seen to be impaired in OCT-A imaging (see review [36, 37]). Significantly different vessel densities were observed in glaucoma patients when compared to healthy controls with good areas under the receiver operating characteristic curve (AUC) [38, 39]. Interestingly, in early glaucoma diagnosis OCT-A data were hypothesized to be better diagnostic tools than retinal nerve fiber layer thickness [40]. The present study showed that especially the differences between the three retinochoroidal layers might be

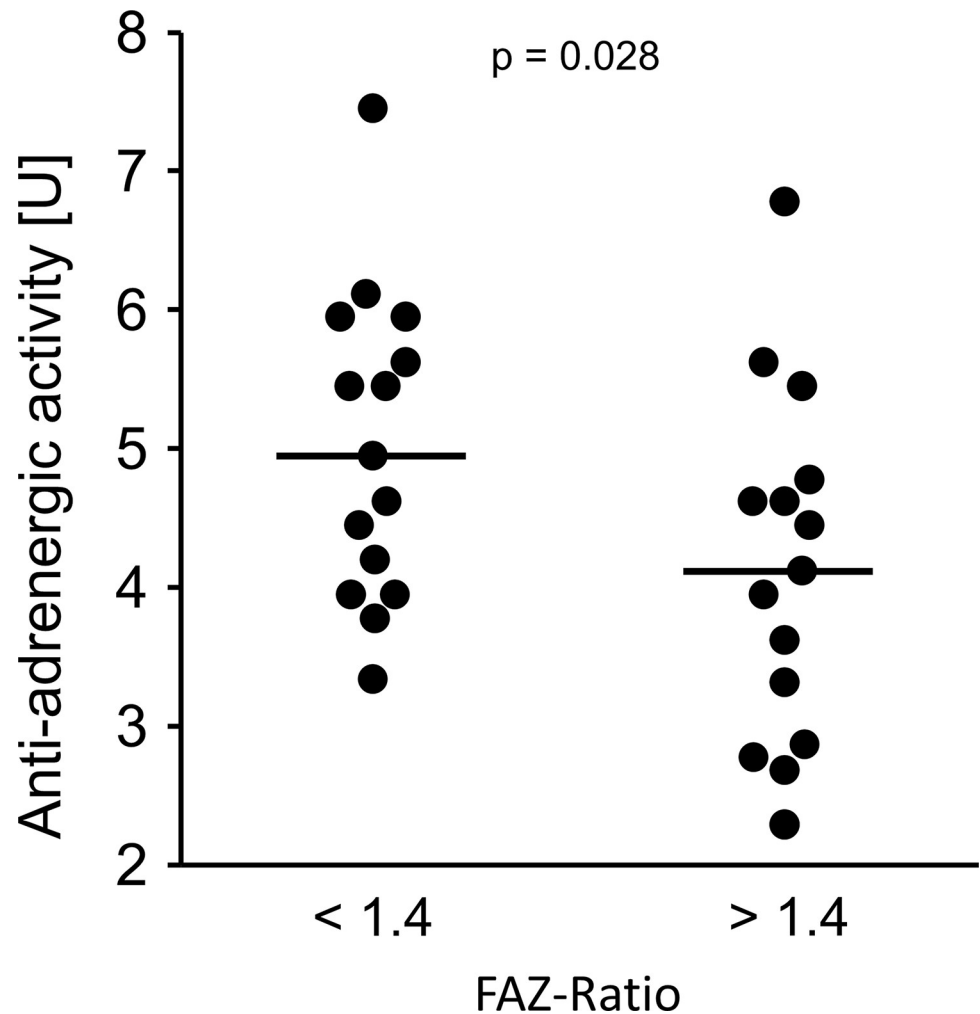


Fig 5. Anti-adrenergic activity β 2-agAAb [U] considering FAZ-ratio (cutoff 1.4; $p = 0.028$), plotted as raw data and median.

<https://doi.org/10.1371/journal.pone.0249202.g005>

of interest in early glaucoma diagnosis. The ratio of SVP to ICP confirmed this as this FAZ-R did not correlate with canonical glaucoma follow-up parameters (MD, RNF thickness, BMO-MRW, RGC thickness, and INL thickness). However, it correlated with the levels of β 2-agAAb. We detected these autoantibodies in patients with early glaucoma disease or OAG [12]. Thus, we propose that parameters (β 2-agAAb, FAZ-R), which are present in very early stages of glaucoma pathogenesis might offer a novel, early option for an extended glaucoma diagnosis. As they correlate by each other, yet not with standard glaucoma parameters, it might be that β 2-agAAb and FAZ-R recruit a further molecular pathway, which does not influence the canonical glaucoma follow-up parameters. As we observed a correlation of FAZ ratio with the β 2-agAAb beat rate in the present study and a seropositivity of β 2-agAAb even in eyes with normal RFNL and normal RGCL (i.e. ocular hypertension) in a previous study [12], we hypothesize that β 2-agAAb are present very early in glaucoma pathogenesis and are linked to microcirculation.

β 2-agAAb are frequent. Patients with POAG and SOAG showed β 2-agAAb in >78% of the patients [13, 41] β 2-agAAb “hyperactivate” the adrenergic β 2-AR in various tissues (e.g. ciliary

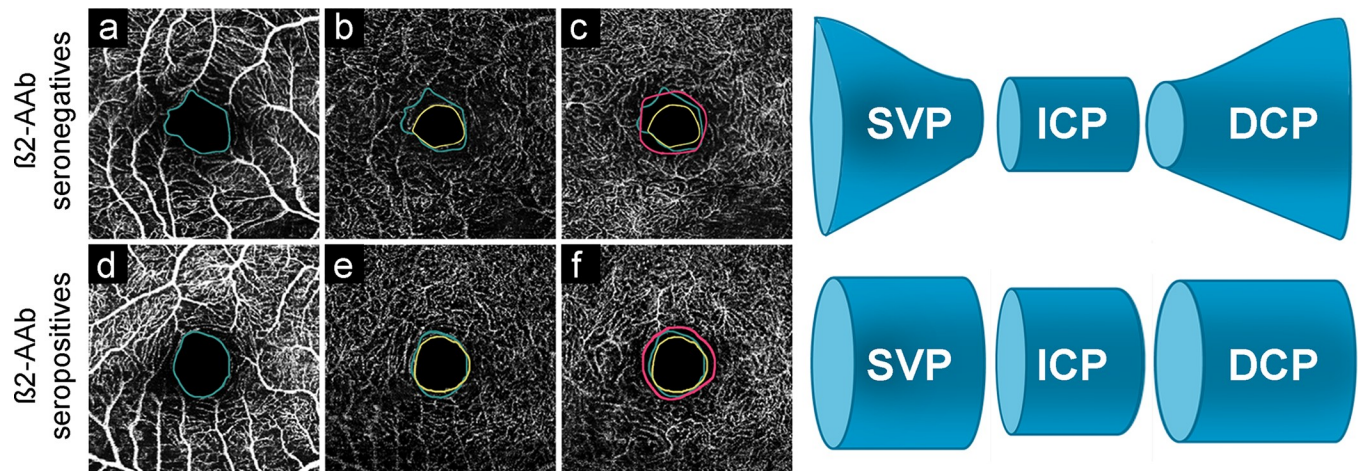


Fig 6. FAZ of superficial vascular plexus (SVP; green; a, d), intermediate capillary plexus (ICP; yellow; b, e), and deep capillary plexus (DCP; pink; c, f) in a $\beta 2$ -agAAb seronegative (a-c) and seropositive (d-f) OAG patient including a schematic sketch of the FAZ of SVP, ICP, DCP considering $\beta 2$ -agAAb seropositivity.

<https://doi.org/10.1371/journal.pone.0249202.g006>

body, and trabecular meshwork) with consecutive influence on IOP via hypersecretion of aqueous humor and decrease of the outflow facility [12]. Activation of $\beta 2$ - and $\beta 3$ -AR on retinal blood vessels reportedly induce vasodilatation [42, 43]. A ‘direct’ autonomic innervation is not present in retinal blood vessels [44]. Yet, sympathetic activation can activate $\beta 2$ -AR ‘indirectly’ via its transmitter adrenaline [42]. Additionally, $\beta 2$ - and $\beta 3$ -AR agonists reportedly mediate retinal vasodilatation [45]. Considering the present data available in literature, $\beta 2$ -AR mediated vasodilatation is an important factor, regulating the retinal microcirculation. To the best of our knowledge, the exact molecular pathway mediated by $\beta 2$ -AR in retinal vessels is still elusive. It was reported that in ischemia the behavior of $\beta 2$ -AR varied: whereas a subgroup was internalized, a second group showed an alternate desensitization that finally caused an increase in affinity [46]. This in vitro observation supports our hypothesis of a link between $\beta 2$ -agAAb (via $\beta 2$ -AR) and impaired retinal microcirculation in glaucoma eyes. As FAZ-R significantly correlated with $\beta 2$ -agAAb beat rate ($p = 0.028$), the present data show that the size of different retinal microvascular layers was mutually altered in the presence of $\beta 2$ -agAAb and resulted in similar FAZ sizes of both microvascular layers (Fig 6).

If the ‘lacking’ vessels are really missing or even not perfused remains unknown. The present study suggests that $\beta 2$ -agAAb influence the retinal microcirculation. We hypothesize that the influence $\beta 2$ -agAAb on FAZ-R is mediated by the prolonged activation of the $\beta 2$ -receptor. Contrary to canonical agonists, activating the $\beta 2$ -receptor only for a short-term, agAAb are known to mediate a stable and even prolonged signal. This uncontrolled hyperactivation of the G-protein coupled receptor can result in cell-toxic effects, as observed for agAAb against $\beta 1$ AR (cardiotoxic effect) in a rat model [24]. Differences or ratios between FAZ of the distinct microvascular layers detected in OCT-A are sensible markers for early pathogenetic alterations. Retinal microcirculation should be considered a single nutritional unit. Thus, pathological alterations in one of the layers of the microvascular most likely influence the other ones.

The present study is not without limitations. Study size is small ($n = 34$), yet data should be seen as having a pilot character and should be confirmed in subsequent studies. Considering the number of subjects per group ($\beta 2$ -agAAb positive vs. negative), we did not make a group comparison. Yet, statistically significant correlations between FAZ-R and $\beta 2$ -agAAb were already observed in this small patient group. Furthermore, the study focused on changes of

FAZ in glaucoma suspects and patients with OAG taking into account the status of β 2-agAAb. Subsequent research will investigate potential alterations in vessel density of SVP, ICP and DCP in the presence of β 2-agAAb.

Conclusion

FAZ characteristics of the macula showed a significant correlation with β 2-agAAb beat rate in glaucoma suspects and patients with open-angle glaucoma. These data support the hypothesis of a pathological role of β 2-agAAb in the microcirculation of the macula. Level of β 2-agAAb did not correlate with the canonical glaucoma follow-up parameters. Yet, with FAZ characteristics, β 2-agAAb should be considered a novel risk factor of glaucoma. In addition, FAZ-R should be seen as a novel early diagnostic morphological marker of glaucoma disease.

Author Contributions

Conceptualization: Bettina Hohberger, Martin Herrmann, Christian Mardin.

Data curation: Bettina Hohberger, Folkert Horn, Luis E. Muñoz, Martin Herrmann.

Formal analysis: Bettina Hohberger, Till Hennig, Folkert Horn, Luis E. Muñoz.

Investigation: Bettina Hohberger, Johann Krebs, Meike Müller, Robert Lämmer.

Methodology: Sami Hosari, Gerd Wallukat, Christian Mardin.

Project administration: Bettina Hohberger.

Software: Sami Hosari, Christian Mardin.

Supervision: Bettina Hohberger, Rudolf Kunze, Martin Herrmann, Christian Mardin.

Visualization: Bettina Hohberger, Martin Herrmann.

Writing – original draft: Bettina Hohberger.

Writing – review & editing: Sami Hosari, Gerd Wallukat, Rudolf Kunze, Folkert Horn, Martin Herrmann, Christian Mardin.

References

1. Jacob MM, Pai HV, Gnanaharan J, Kamath S. Serum Bile Acids in Patients with Primary Open Angle Glaucoma. *Journal of glaucoma*. 2018. <https://doi.org/10.1097/IJG.0000000000000993> PMID: 29847360
2. Hohberger B, Chaudhri MA, Michalke B, Lucio M, Nowomiejska K, Schlotzer-Schrehardt U, et al. Levels of aqueous humor trace elements in patients with open-angle glaucoma. *J Trace Elem Med Biol*. 2018; 45:150–5. <https://doi.org/10.1016/j.jtemb.2017.10.003> PMID: 29173472
3. Tektas OY, Lutjen-Drecoll E. Structural changes of the trabecular meshwork in different kinds of glaucoma. *Experimental eye research*. 2009; 88(4):769–75. <https://doi.org/10.1016/j.exer.2008.11.025> PMID: 19114037
4. Joachim SC, Reinehr S, Kuehn S, Laspas P, Gramlich OW, Kuehn M, et al. Immune response against ocular tissues after immunization with optic nerve antigens in a model of autoimmune glaucoma. *Molecular vision*. 2013; 19:1804–14. PMID: 23946635
5. Wei X, Cho KS, Thee EF, Jager MJ, Chen DF. Neuroinflammation and microglia in glaucoma: time for a paradigm shift. *Journal of neuroscience research*. 2018.
6. Flammer J. The vascular concept of glaucoma. *Survey of ophthalmology*. 1994; 38 Suppl:S3–6. [https://doi.org/10.1016/0039-6257\(94\)90041-8](https://doi.org/10.1016/0039-6257(94)90041-8) PMID: 7940146
7. Grieshaber MC, Mozaffarieh M, Flammer J. What is the link between vascular dysregulation and glaucoma? *Survey of ophthalmology*. 2007; 52 Suppl 2:S144–54. <https://doi.org/10.1016/j.survophthal.2007.08.010> PMID: 17998040

8. Hosari S, Hohberger B, Theelke L, Sari H, Lucio M, Mardin CY. OCT Angiography: Measurement of Retinal Macular Microvasculature with Spectralis II OCT Angiography—Reliability and Reproducibility. *Ophthalmologica Journal international d'ophtalmologie International journal of ophthalmology Zeitschrift fur Augenheilkunde*. 2020; 243(1):75–84. <https://doi.org/10.1159/000502458> PMID: 31509842
9. Campbell J, Zhang M, Hwang T, Bailey S, Wilson D, Jia Y, et al. Detailed vascular anatomy of the human retina by projection-resolved optical coherence tomography angiography. *Sci Rep-Uk*. 2017; 7:42201. <https://doi.org/10.1038/srep42201> PMID: 28186181
10. Choi J, Kwon J, Shin JW, Lee J, Lee S, Kook MS. Quantitative optical coherence tomography angiography of macular vascular structure and foveal avascular zone in glaucoma. *PloS one*. 2017; 12(9): e0184948. <https://doi.org/10.1371/journal.pone.0184948> PMID: 28934255
11. Ferrari-Dileo G. Beta 1 and beta 2 adrenergic binding sites in bovine retina and retinal blood vessels. *Investigative ophthalmology & visual science*. 1988; 29(5):695–9. PMID: 2835327
12. Junemann A, Hohberger B, Rech J, Sheriff A, Fu Q, Schlotzer-Schrehardt U, et al. Agonistic Autoantibodies to the beta2-Adrenergic Receptor Involved in the Pathogenesis of Open-Angle Glaucoma. *Frontiers in immunology*. 2018; 9:145. <https://doi.org/10.3389/fimmu.2018.00145> PMID: 29483909
13. Hohberger B MC, Hosari S, Lämmer R, Kunze R, Schlötzer-Schrehardt U, et al. Are agonistic β 2-adrenergic receptor autoantibodies present in normal tension glaucoma and secondary open-angle glaucoma?. *ARVO*; Vancouver: IOVS; 2019.
14. Crider JY, Sharif NA. Adenylyl cyclase activity mediated by beta-adrenoceptors in immortalized human trabecular meshwork and non-pigmented ciliary epithelial cells. *Journal of ocular pharmacology and therapeutics: the official journal of the Association for Ocular Pharmacology and Therapeutics*. 2002; 18(3):221–30. <https://doi.org/10.1089/108076802760116142> PMID: 12099543
15. Wax MB, Molinoff PB. Distribution and properties of beta-adrenergic receptors in human iris-ciliary body. *Investigative ophthalmology & visual science*. 1987; 28(3):420–30. PMID: 3030954
16. Putney LK, Vibat CR, O'Donnell ME. Intracellular Cl regulates Na-K-Cl cotransport activity in human trabecular meshwork cells. *The American journal of physiology*. 1999; 277(3 Pt 1):C373–83. <https://doi.org/10.1152/ajpcell.1999.277.3.C373> PMID: 10484324
17. Hohberger B, Monczak E, Mardin CY. [26 Years of the Erlangen Glaucoma Registry: Demographic and Perimetric Characteristics of Patients Through the Ages]. *Klinische Monatsblätter für Augenheilkunde*. 2019; 236(5):691–8. <https://doi.org/10.1055/s-0043-112856> PMID: 28750434
18. Jonas JB, Gusek GC, Naumann GO. Optic disc morphometry in chronic primary open-angle glaucoma. I. Morphometric intrapapillary characteristics. *Graefe's archive for clinical and experimental ophthalmology = Albrecht von Graefes Archiv für klinische und experimentelle Ophthalmologie*. 1988; 226(6):522–30. <https://doi.org/10.1007/BF02169199> PMID: 3209079
19. Wallukat G, Wollenberger A. Effects of the serum gamma globulin fraction of patients with allergic asthma and dilated cardiomyopathy on chronotropic beta adrenoceptor function in cultured neonatal rat heart myocytes. *Biomedica biochimica acta*. 1987; 46(8–9):S634–9. PMID: 2449194
20. Hosari S HB, Theelke L, Hasan S, Mardin CY. OCT angiography: Measurement of retinal macular microvasculature with Spectralis II OCT angiography reliability and reproducibility *ARVO Imaging Conference*; Vancouver: IOVS; 2019.
21. Otsu N. A threshold selection method from gray-level histograms. *IEEE transactions on systems, man, and cybernetics*. 1979; 9(1):62–6.
22. Alejandro F, Frangi WJN, Vincken Koen L., Viergever Max A. Multiscale vessel enhancement filtering. *Berlin Heidelberg*: Springer 1998.
23. Wallukat G, Nissen E, Morwinski R, Muller J. Autoantibodies against the beta- and muscarinic receptors in cardiomyopathy. *Herz*. 2000; 25(3):261–6. <https://doi.org/10.1007/s000590050017> PMID: 10904849
24. Jahns R, Boivin V, Hein L, Triebel S, Angermann CE, Ertl G, et al. Direct evidence for a beta(1)-adrenergic receptor-directed autoimmune attack as a cause of idiopathic dilated cardiomyopathy. *Journal of Clinical Investigation*. 2004; 113(10):1419–29. <https://doi.org/10.1172/JCI20149> PMID: 15146239
25. Zhang L, Hu D, Shi X, Li J, Zeng W, Xu L, et al. [Autoantibodies against the myocardium beta 1-adrenergic and M2-muscarinic receptors in patients with heart failure]. *Zhonghua nei ke za zhi*. 2001; 40(7):445–7. PMID: 11798611
26. Karczewski P, Hempel P, Kunze R, Bimmler M. Agonistic autoantibodies to the alpha(1) -adrenergic receptor and the beta(2) -adrenergic receptor in Alzheimer's and vascular dementia. *Scandinavian journal of immunology*. 2012; 75(5):524–30. <https://doi.org/10.1111/j.1365-3083.2012.02684.x> PMID: 22260197
27. Shin JW, Sung KR, Lee JY, Kwon J, Seong M. Optical coherence tomography angiography vessel density mapping at various retinal layers in healthy and normal tension glaucoma eyes. *Graefe's Archive for*

- Clinical and Experimental Ophthalmology. 2017; 255(6):1193–202. <https://doi.org/10.1007/s00417-017-3671-4> PMID: 28429123
28. Park JJ, Soetikno BT, Fawzi AA. Characterization of the middle capillary plexus using optical coherence tomography angiography in healthy and diabetic eyes. *Retina* (Philadelphia, Pa). 2016; 36(11):2039. <https://doi.org/10.1097/IAE.0000000000001077> PMID: 27205895
 29. Jia Y, Tan O, Tokayer J, Potsaid B, Wang Y, Liu JJ, et al. Split-spectrum amplitude-decorrelation angiography with optical coherence tomography. *Optics express*. 2012; 20(4):4710–25. <https://doi.org/10.1364/OE.20.004710> PMID: 22418228
 30. Frangi AF, Niessen WJ, Vincken KL, Viergever MA, editors. *Multiscale vessel enhancement filtering* 1998; Berlin, Heidelberg: Springer Berlin Heidelberg.
 31. Lavia C, Couturier A, Erginay A, Dupas B, Tadayoni R, Gaudric A. Reduced vessel density in the superficial and deep plexuses in diabetic retinopathy is associated with structural changes in corresponding retinal layers. *PloS one*. 2019; 14(7):e0219164. <https://doi.org/10.1371/journal.pone.0219164> PMID: 31318880
 32. Vujosevic S, Toma C, Villani E, Gatti V, Brambilla M, Muraca A, et al. Early Detection of Microvascular Changes in Patients with Diabetes Mellitus without and with Diabetic Retinopathy: Comparison between Different Swept-Source OCT-A Instruments. *J Diabetes Res*. 2019.
 33. Wang JC, Miller JB. Optical Coherence Tomography Angiography: Review of Current Technical Aspects and Applications in Chorioretinal Disease. *Seminars in ophthalmology*. 2019; 34(4):211–7. <https://doi.org/10.1080/08820538.2019.1620797> PMID: 31131663
 34. Jia Y, Bailey ST, Wilson DJ, Tan O, Klein ML, Flaxel CJ, et al. Quantitative optical coherence tomography angiography of choroidal neovascularization in age-related macular degeneration. *Ophthalmology*. 2014; 121(7):1435–44. <https://doi.org/10.1016/j.ophtha.2014.01.034> PMID: 24679442
 35. Tian M, Tappeiner C, Zinkernagel MS, Huf W, Wolf S, Munk MR. Evaluation of vascular changes in intermediate uveitis and retinal vasculitis using swept-source wide-field optical coherence tomography angiography. *The British journal of ophthalmology*. 2018. <https://doi.org/10.1136/bjophthalmol-2018-313078> PMID: 30538102
 36. Moghimi S, Hou H, Rao H, Weinreb RN. Optical Coherence Tomography Angiography and Glaucoma: A Brief Review. *Asia-Pacific journal of ophthalmology*. 2019. <https://doi.org/10.22608/APO.201914> PMID: 30945480
 37. Werner AC, Shen LQ. A Review of OCT Angiography in Glaucoma. *Seminars in ophthalmology*. 2019; 34(4):279–86. <https://doi.org/10.1080/08820538.2019.1620807> PMID: 31158045
 38. Yarmohammadi A, Zangwill LM, Diniz-Filho A, Suh MH, Manalastas PI, Fatehee N, et al. Optical Coherence Tomography Angiography Vessel Density in Healthy, Glaucoma Suspect, and Glaucoma Eyes. *Investigative ophthalmology & visual science*. 2016; 57(9):OCT451–9.
 39. Tepelus TC, Song S, Borrelli E, Nittala MG, Baghdasaryan E, Sadda SR, et al. Quantitative Analysis of Retinal and Choroidal Vascular Parameters in Patients With Low Tension Glaucoma. *Journal of glaucoma*. 2019; 28(6):557–62. <https://doi.org/10.1097/IJG.0000000000001242> PMID: 30889061
 40. Hou H, Moghimi S, Zangwill LM, Shoji T, Ghahari E, Manalastas PIC, et al. Inter-eye Asymmetry of Optical Coherence Tomography Angiography Vessel Density in Bilateral Glaucoma, Glaucoma Suspect, and Healthy Eyes. *American journal of ophthalmology*. 2018; 190:69–77. <https://doi.org/10.1016/j.ajo.2018.03.026> PMID: 29580976
 41. Hohberger B HM, Horn F, Kruse FE, Jünemann A. Agonistic β 2-Adrenergic Receptor Autoantibodies in Ocular Hypertension and Open-Angle Glaucoma. *Invest Ophthalmol Vis Sci* 2014; 55(13):532.
 42. Nakazawa T, Sato A, Mori A, Saito M, Sakamoto K, Nakahara T, et al. Beta-adrenoceptor-mediated vasodilation of retinal blood vessels is reduced in streptozotocin-induced diabetic rats. *Vascular pharmacology*. 2008; 49(2–3):77–83. <https://doi.org/10.1016/j.vph.2008.06.001> PMID: 18585480
 43. Mori A, Miwa T, Sakamoto K, Nakahara T, Ishii K. Pharmacological evidence for the presence of functional beta(3)-adrenoceptors in rat retinal blood vessels. *Naunyn-Schmiedeberg's archives of pharmacology*. 2010; 382(2):119–26. <https://doi.org/10.1007/s00210-010-0526-5> PMID: 20503039
 44. Delaey C, Van De Voorde J. Regulatory mechanisms in the retinal and choroidal circulation. *Ophthalmic research*. 2000; 32(6):249–56. <https://doi.org/10.1159/000055622> PMID: 11015035
 45. Mori A, Nakahara T, Sakamoto K, Ishii K. Role of beta3-adrenoceptors in regulation of retinal vascular tone in rats. *Naunyn-Schmiedeberg's archives of pharmacology*. 2011; 384(6):603–8. <https://doi.org/10.1007/s00210-011-0682-2> PMID: 21901314
 46. Frame MD, Dewar AM, Calizo RC, Qifti A, Scarlata SF. Nitrosative stress uncovers potent beta2-adrenergic receptor-linked vasodilation further enhanced by blockade of clathrin endosome formation. *American journal of physiology Heart and circulatory physiology*. 2018; 314(6):H1298–H308. <https://doi.org/10.1152/ajpheart.00365.2017> PMID: 29569954