



A biallelic variant in *CLRN2* causes non-syndromic hearing loss in humans

Barbara Vona^{1,2} · Neda Mazaheri³ · Sheng-Jia Lin⁴ · Lucy A. Dunbar⁵ · Reza Maroofian⁶ · Hela Azaiez⁷ · Kevin T. Booth^{7,8} · Sandrine Vitry⁹ · Aboufazel Rad² · Franz Rüschemdorf¹⁰ · Pratihtha Varshney⁴ · Ben Fowler¹¹ · Christian Beetz¹² · Kumar N. Alagramam^{13,14,15} · David Murphy⁶ · Gholamreza Shariati^{16,17} · Alireza Sedaghat¹⁸ · Henry Houlden⁶ · Cassidy Petree⁴ · Shruthi VijayKumar⁴ · Richard J. H. Smith⁷ · Thomas Haaf¹ · Aziz El-Amraoui⁹ · Michael R. Bowl^{5,19} · Gaurav K. Varshney⁴ · Hamid Galehdari³

Received: 25 September 2020 / Accepted: 31 December 2020 / Published online: 26 January 2021
© The Author(s) 2021

Abstract

Deafness, the most frequent sensory deficit in humans, is extremely heterogeneous with hundreds of genes involved. Clinical and genetic analyses of an extended consanguineous family with pre-lingual, moderate-to-profound autosomal recessive sensorineural hearing loss, allowed us to identify *CLRN2*, encoding a tetraspan protein, as a new deafness gene. Homozygosity mapping followed by exome sequencing identified a 14.96 Mb locus on chromosome 4p15.32p15.1 containing a likely pathogenic missense variant in *CLRN2* (c.494C>A, NM_001079827.2) segregating with the disease. Using in vitro RNA splicing analysis, we show that the *CLRN2* c.494C>A variant leads to two events: (1) the substitution of a highly conserved threonine (uncharged amino acid) to lysine (charged amino acid) at position 165, p.(Thr165Lys), and (2) aberrant splicing, with the retention of intron 2 resulting in a stop codon after 26 additional amino acids, p.(Gly146Lysfs*26). Expression studies and phenotyping of newly produced zebrafish and mouse models deficient for *clarin 2* further confirm that *clarin 2*, expressed in the inner ear hair cells, is essential for normal organization and maintenance of the auditory hair bundles, and for hearing function. Together, our findings identify *CLRN2* as a new deafness gene, which will impact future diagnosis and treatment for deaf patients.

Introduction

The mammalian inner ear is an exquisite and highly complex organ, made up of the vestibule, the organ responsible for balance, and the cochlea, the sensory organ for hearing. The

auditory sensory cells of the inner ear are called the inner and outer hair cells that are responsible for transduction of sound wave-induced mechanical energy into neuronal signals (Gillespie and Müller 2009; Hudspeth 1997). The functional mechano-electrical transduction machinery involves intact formation and maintenance of a highly specialized and organized structure, the hair bundle. The hair bundle contains a few dozen F-actin-filled stereocilia, arranged in a highly interconnected and highly organized staircase-like pattern, which is critical for function (Kazmierczak et al. 2007). Knowledge of the mechanisms of formation, maintenance, and function of the transduction complex is limited (Cunningham and Müller 2019). In this regard, identification of novel genes that encode protein products essential for hearing is likely to improve our understanding of the physical, morphological and molecular properties of hair cells and associated mechanistic processes.

Hereditary hearing loss is one of the most common and genetically heterogeneous disorders in humans (Wright et al. 2018). Sensorineural hearing loss has an incidence of 1 to

Neda Mazaheri, Sheng-Jia Lin, Lucy A. Dunbar contributed equally.

Aziz El-Amraoui, Michael R. Bowl, Gaurav K. Varshney and Hamid Galehdari share senior authorship.

Supplementary Information The online version contains supplementary material available at <https://doi.org/10.1007/s00439-020-02254-z>.

✉ Barbara Vona
barbara.vona@uni-wuerzburg.de;
barbara.vona@uni-tuebingen.de

✉ Michael R. Bowl
m.bowl@har.mrc.ac.uk; m.bowl@ucl.ac.uk

Extended author information available on the last page of the article

2 per 1000 at birth (Morton and Nance 2006). It displays extraordinary phenotypic, genetic and allelic heterogeneity, with up to 1000 different genes potentially involved (Ingham et al. 2019). So far, about 120 genes and more than 6000 disease causing variants (Azaiez et al. 2018) have been identified as responsible for non-syndromic hearing loss in humans (see <http://hereditaryhearingloss.org/> and <http://deafnessvariationdatabase.org/>), and many more are yet to be discovered. Genetic factors predominate the etiological spectrum and most hereditary hearing loss appears to follow an autosomal recessive inheritance pattern (Smith et al. 2005). To date, approximately 80% of the known autosomal recessive deafness-associated genes have been originally identified by studying extended consanguineous families (Hofrichter et al. 2018). There are many forms of hearing loss that are clinically indistinguishable but caused by distinct genetic entities that are presently unknown. Identification of additional genes essential for auditory function, through the study of families exhibiting hereditary hearing loss, will not only help increase our understanding of the biology of hearing, but will also identify new molecular targets for therapeutic intervention.

Through the study of an extended consanguineous Iranian family, we have identified a *CLRN2* coding lesion as the likely cause of hearing loss in family members that are homozygous for the allele. We have established that clarin 2 likely plays a critical role in mechanotransducing stereocilia of the hair bundle in zebrafish and mouse. *CLRN2* belongs to the clarin (*CLRN*) family of proteins that are comprised of three orthologues named clarin 1, 2, and 3 that encode four-transmembrane domain proteins. Pathogenic variants in *CLRN1* (clarin 1) cause either non-syndromic retinitis pigmentosa (RP) (Khan et al. 2011) or Usher syndrome type 3A (*USH3A*), that is characterized by progressive hearing loss, RP and variable vestibular dysfunction (Adato et al. 2002; Joensuu et al. 2001; Ness et al. 2003; Plantinga et al. 2005). This study establishes clarin 2 as essential for inner ear function in zebrafish, mice and humans, with a loss-of-function allele leading to autosomal recessive non-syndromic sensorineural hearing loss (ARNSHL).

Materials and methods

Patient clinical and audiometry data

Written informed consent was provided from all participating individuals. This study has been approved by the Faculty of Medicine ethics commissions at the University of Würzburg (46/15) and Shahid Chamran University of Ahvaz (#EE/97.24.3 17654). A three generation Iranian family of Lurs ethnicity was ascertained as part of a large ethnically

diverse Iranian population rare disease study. Pure-tone audiograms and medical information were collected from participating members. Clinical examination excluded additional syndromic features.

Individuals IV-1, IV-6, and V-1 (Fig. 1) underwent complete ear, nose and throat examination, including binocular ear microscopy and external ear inspection. Routine pure-tone audiometry was performed according to current standards that measured hearing thresholds at frequencies 0.25, 0.5, 1, 2, 4, 6 and 8 kHz. Both air- and bone-conduction thresholds were determined. Severity of hearing loss was defined as previously described (Mazzoli et al. 2003). Individuals IV-1 and IV-6 underwent additional tympanometry and speech recognition threshold testing. Audiometry testing for individuals IV-1, IV-6, and V-1 was performed at ages 29, 44, and 20 years, respectively.

Genotyping, gene mapping, copy number variation and exome sequencing data analyses

Due to parental consanguinity and suspected autosomal recessive mode of inheritance, we assumed that the causal variant would be homozygous and identical by descent in affected individuals in the fourth generation of the family. Blood samples from 14 family members were obtained and genomic DNA was isolated from whole blood using standard procedures. DNA from affected (IV-1, IV-6, and IV-8) and unaffected (IV-2, IV-3, IV-4, and IV-5) individuals were genotyped using the Infinium Global Screening Array-24 v1.0 BeadChip (Illumina, San Diego, CA, USA) according to manufacturer's protocols. Copy number variation calling was performed using GenomeStudio v.2011.1 and cnvPartition 3.2.0 (Illumina).

From the 618,540 markers on the array, we filtered out InDels, MT- and Y-chromosomal SNPs, multi-allelic SNPs, SNPs with missing genotypes in more than one individual, and SNPs having a minor allele frequency (MAF) lower than 5% in gnomAD European individuals (NFE) resulting in 242,705 bi-allelic SNPs for quality control (QC) and Linkage analysis. Data conversion to Linkage format files and QC was managed with the ALOHOMORA software (Rüschendorf and Nürnberg 2005). The sex of individuals was estimated by counting heterozygous genotypes on the X-chromosome and compared to the given pedigree data. The relationships between family members were verified with the program Graphical Relationship Representation (GRR) (Abecasis et al. 2001). PedCheck (O'Connell and Weeks 1998) was used to detect Mendelian errors (ME) and SNPs with ME were removed from the data set. Unlikely genotypes, e.g., double recombinants, were identified with Merlin (Abecasis et al. 2002) and deleted in the individuals.

Linkage analysis was performed with Merlin (Abecasis et al. 2002) using an autosomal recessive mode of

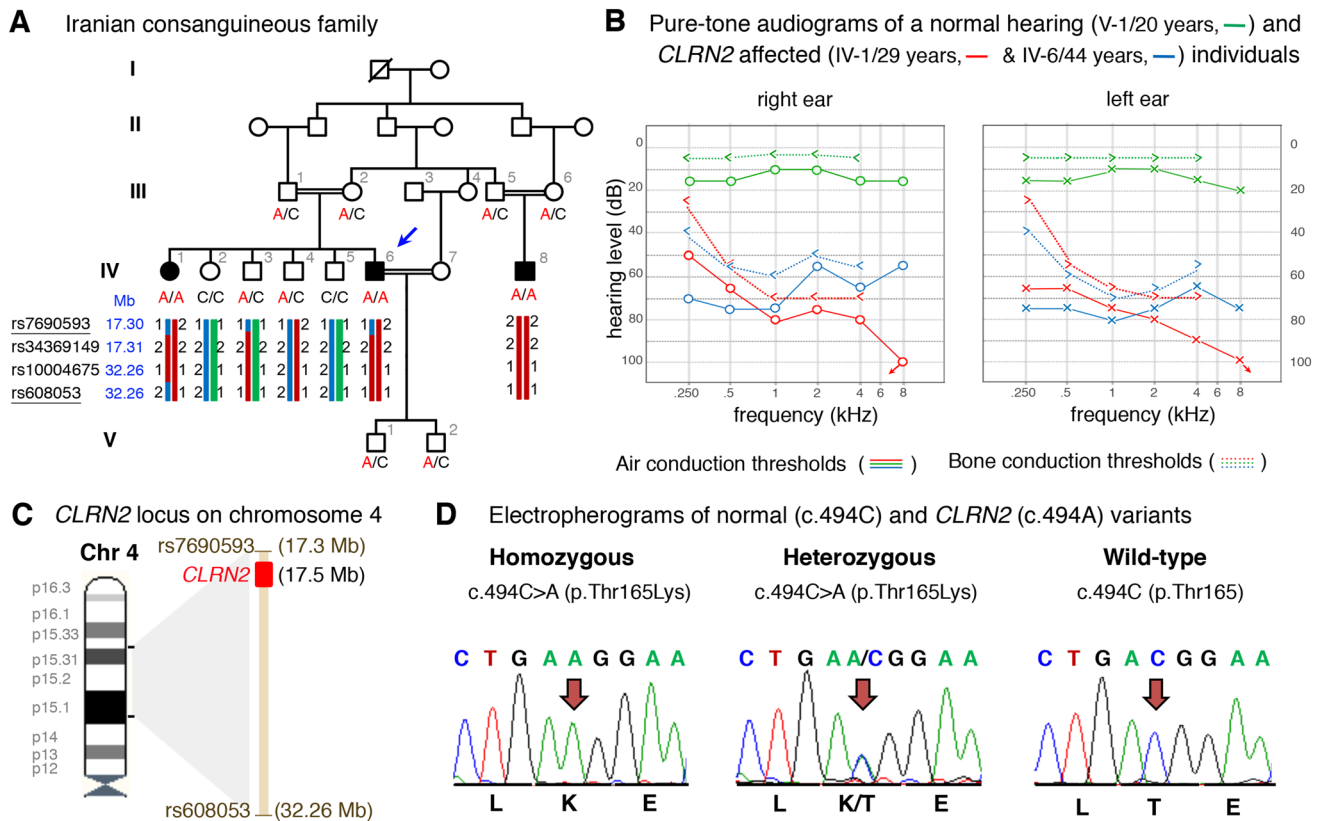


Fig. 1 Pedigree, audiological data, genetic data, and locus mapping. **a** The consanguineous family of Iranian origin with hearing loss and segregation of the *CLRN2* c.494C>A variant. Linked haplotypes harbouring the pathogenic variant coloured in red with meiotic recombination SNP markers underlined. SNP positions are annotated using the GRCh37 human genome assembly. **b** Pure-tone audiograms from affected individuals IV-1 (red) and IV-6 (blue), as well as an unaffected heterozygous individual V-1 (green). Air-conduction thresh-

olds in dB HL for the right and left ears are represented by circles and crosses, respectively. Bone-conduction thresholds are represented by < and > for right and left ears, respectively, and confirm a sensorineural hearing loss in the affected individuals. **c** Linkage mapping reveals a 14.96 Mb locus on chromosome 4 containing *CLRN2*. **d** Sequence electropherograms showing the homozygous, heterozygous and WT images of the *CLRN2* c.494C>A; pThr165Lys pathogenic variants

inheritance with complete penetrance and a mutant allele frequency of 0.001. To avoid the problem of Linkage Disequilibrium (LD) between markers, which can lead to inflated LOD scores, we created a less dense, LD-reduced marker set of 91,426 SNPs with a minimal distance of 10,000 bases between markers and a MAF > 0.15. The exact position of the LOD score regions, e.g., the recombination events, were identified with the full marker set of 242,705 SNPs.

Additionally, homozygosity mapping was performed using HomozygosityMapper to identify common homozygous intervals among the affected individuals (Seelow et al. 2009). Runs of homozygosity with a maximum threshold of 0.99 were checked after the exome-wide analysis was completed.

For exome sequencing, DNA samples from two affected individuals (IV-1 and IV-6) were used. The data from individual IV-6 were analyzed exome-wide and data from individual IV-1 were used for determination of allele sharing. Exome capture using genomic DNA was performed using

the SureSelect Target Enrichment v6 (Agilent) kit following manufacturer's recommendations. The libraries were sequenced with a HiSeq4000 (Illumina). Data analysis was performed using the Burrows–Wheeler Alignment (BWA) tool for read mapping to the human reference genome GRCh37 (hg19), Picard for duplicate removal, GATK for local re-alignment, base recalibration, variant calling, and variant annotation, and SnpEff for variant annotation. Variant filtering was based on: coverage > 10X, Phred quality score ≥ 30 , and MAF ≤ 0.005 as reported in 1000 Genomes Project and EVS6500. Variants were filtered based on coding effect (non-synonymous, synonymous, indels, and splice site variants), and artifact-prone genes (*HLAs*, *MAGEs*, *MUCs*, *NBPFs*, *ORs*, *PRAMEs*) were excluded. ACMG guidelines were used for variant interpretation (Oza et al. 2018). Visualization was performed using the Integrative Genomics Viewer. Analysis of homozygous and compound heterozygous variants between the two sequenced affected individuals (IV-6 and IV-1) followed. We analyzed missense

variants using a combination of criteria that scored conservation using GERP++ and PhyloP, and deleterious or pathogenic scores in Combined Annotation Dependent Depletion (CADD) (Kircher et al. 2014), LRT (Chun and Fay 2009), MutationTaster (Schwarz et al. 2014), PolyPhen-2 (Adzhubei et al. 2010), and SIFT (Ng and Henikoff 2001). Missense variants were excluded when three out of five in silico pathogenicity prediction tools yielded a benign score. Manual MAF analysis used gnomAD (Lek et al. 2016), GME (Scott et al. 2016) and Iranome (Fattahi et al. 2019). Potential effects on splicing were assessed using ESEfinder (Cartegni et al. 2003) and RESCUE-ESE (Fairbrother et al. 2004).

Segregation, sequence and in vitro splicing analyses of the *CLRN2* c.494C > A likely pathogenic variant

To confirm segregation of the *CLRN2* c.494C > A; p.(Thr165Lys) (NM_001079827.2) homozygous variant, Sanger sequencing was completed in all 14 family members using the following primers (*CLRN2* Ex3 F: 5'-AAATGC CACCTCTTACAGAGTTGC-3' and *CLRN2* Ex3 R: 5'-ACC GTGGCCTCTTCGATTTTGGTC-3') and standard PCR and sequencing parameters.

To document residue conservation, CLRN1 (UniProt: P58418) and CLRN2 (UniProt: A0PK11) were aligned and visualized in Jalview (Waterhouse et al. 2009) with an overview of the pathogenic and likely pathogenic missense and nonsense *CLRN1* variants retrieved from the Deafness Variation Database v 8.2 (Azaiez et al. 2018).

In addition, secondary protein structure prediction of human CLRN2 (NP_001073296.1) that included the wild-type (WT) and mutated amino acid residues was performed using I-TASSER (Yang et al. 2015).

To assess the splicing effect of the c.494C > A variant, in vitro splicing assays, also called mini-genes, were carried out as described (Booth et al. 2018a, b). WT *CLRN2* exon 3 (266 bp) plus 183 and 51 nucleotides from intron 2 and the 3'UTR were PCR amplified with gene-specific primers containing *Sall* or *SacII* restriction enzyme sites, respectively. After PCR amplification, clean up, and restriction enzyme digestion, the PCR fragment was ligated into the pET01 Exontrap vector (MoBiTec) and the sequence was confirmed. Variants were then introduced into the WT sequence using QuikChange Lightning Site-Directed Mutagenesis (Agilent) according to the manufacturer's protocols via overlapping primers containing the alteration. The WT and mutant mini-genes were sequence confirmed.

WT or mutant mini-genes were transfected in triplicates into COS-7 and ARPE-19 cells using TransIT-LT1 Transfection Reagent (Mirus). Cells were harvested 36 h after transfection and total RNA was extracted using Quick-RNA MiniPrep Plus kit (ZYMO Research). cDNA was transcribed

using 750 ng of isolated RNA SuperScript™ III Reverse Transcriptase (ThermoFisher Scientific) using a primer specific to the 3' native exon of the pET01 vector according to manufacturer's protocol. PCR amplification followed using primers specific to the 5' and 3' native exons of the pET01 vector, and products were visualized on a 1.5% agarose gel. As a negative control, rs117875715 (chr4(GRCh37):g.17,528,480G > A), a benign polymorphism, was used to test and validate the designed mini-gene assay.

Concurrently, the mini-gene splice assay experiment was conducted in a double-blind manner as previously described (Lekszas et al. 2020). Genomic DNAs of an affected homozygous (IV-6) and WT individual (IV-5) were amplified using a forward primer with a *XhoI* restriction site (*CLRN2* Ex3 *XhoI* F: 5'-aattctcgagTTGCAGTGAGCTGAG ATGGT-3') and a reverse primer with a *BamHI* restriction site (*CLRN2* Ex3 *BamHI* R: 5'-attgatccGCCTTGCGAAGT TGTTACTG-3'). The 886 bp amplicon included the entire exon 3 sequence plus additional flanking 320 bp (5') and 306 bp (3') sequence that was ligated into a multiple cloning site between native exons A and B in the linearized pSPL3b exon-trapping vector. The vector was transformed into DH5 α competent cells and plated overnight. All mutant mini-genes were Sanger sequence confirmed.

Homozygous and WT mini-genes were transfected in triplicate into HEK 293 T cells cultured in FCS-free medium in 6 well culture plates with a density of 2×10^5 cells per mL. The mini-genes in the pSPL3b vector were transiently transfected using 6 μ l of FuGENE 6 Transfection Reagent (Roche) with 2 μ g of vector. An empty vector and HEK 293 T cells were included as controls. The transfected cells were harvested 24–48 h post-transfection. Total RNA was prepared using the miRNAeasy Mini Kit (Qiagen). Approximately, 1 μ g of RNA was reverse transcribed using a High Capacity RNA-to-cDNA Kit (Applied Biosystems) following manufacturer's protocols. The cDNA was used for PCR amplification using a vector specific SD6 forward (5'-TCT GAGTCACCTGGACAACC-3') and a terminal *CLRN2* exon 3 reverse cDNA primer (5'-CAAGATATCCTCAGCTGT GACC-3'). The resulting amplified fragments were visualized on a 1.5% agarose gel. cDNA amplicons were Sanger sequenced. cDNA amplicons from the homozygous individual were cloned following standard protocols for the TA cloning (dual promoter with pCRII) kit (Invitrogen).

CRISPR/Cas9-mediated inactivation of *clrn2* in zebrafish

Zebrafish (*Danio rerio*) were raised and maintained in an AALAC accredited facility at the Oklahoma Medical Research Foundation (OMRF) under standard conditions. Zebrafish embryos/larvae were maintained in embryo medium with 0.00002% methylene blue and raised at 28 °C.

All animal experiments were performed as per protocol (17-01) and approved by the Institutional Animal Care Committee of OMRF (IACUC). All zebrafish handling, embryo care, and microinjections were performed as previously described (Westerfield 2000). WT zebrafish strain NHGRI-1 was used for all experiments (LaFave et al. 2014). The zebrafish embryonic staging was determined by morphological features according to (Kimmel et al. 1995).

To produce zebrafish *clrn2* crispants, the sgRNA target sequences were selected from the UCSC genome browser tracks generated by the Burgess lab. Five independent targets were chosen and sgRNAs were synthesized by in vitro transcription as described earlier (Varshney et al. 2016). sgRNAs and Cas9 protein complex were used to generate indels. A 6 μ L mixture containing 2 μ L of 40 μ M Spy Cas9 NLS protein (New England Biolabs, MA, USA), 200 ng each of five sgRNAs (in 2 μ L) and 2 μ L of 1 M potassium chloride was injected into one-cell-stage WT embryos. Injection volumes were calibrated to 1.4 nL per injection. Insertion/deletion (indel) variants were detected by amplifying the target region by PCR and Sanger sequencing as described earlier (Varshney et al. 2016). The sequencing data were analyzed by Inference of CRISPR Edits (ICE) v2 CRISPR analysis tool. The sgRNA target sequences and PCR primer sequences are listed in Supplementary Table S1.

Zebrafish RNA extraction and quantitative reverse transcription PCR (RT-qPCR)

Total RNA at different developmental stages, adult tissues, and CRISPR/Cas9 injected larvae were extracted using the TRIzol Reagent (Thermo Fisher Scientific, CA, USA) and purified by RNA clean and concentrator-5 kit (Zymo Research, CA, USA) according to the manufacturer's instructions. RNA concentration was measured by DeNovix DS-11 spectrophotometer (DeNovix Inc., USA). The cDNA was synthesized by iScript RT Supermix (Bio-Rad, USA), and was used as a template for performing the RT-qPCR with SYBR Green Supermix (Thermo Fisher Scientific, CA, USA) and the Light Cycler® 96 System (Roche, CA, USA). All RT-qPCR reactions were carried out using three biological and technical replicates. The housekeeping gene *18S* was used as a reference gene.

All RT-qPCR primer pairs were designed across exon-exon junctions using NCBI Primer-BLAST program (Supplementary Table S1). PCR cycling conditions were used as per manufacturer instructions. All reactions were carried out using three biological and technical replicates. The housekeeping gene *18S* was used as a reference gene. Amplification specificity was assessed by dissociation curve analysis. The cycle threshold values (Ct) data were imported into Microsoft Excel for the relative gene expression analysis. Quantification was based on $2^{(-\Delta\Delta CT)}$ method (Livak and

Schmittgen 2001), and using 18 h post fertilization (hpf) for *clarin 2* temporal expression, muscle for *clarin 2* in different tissue expression and the corresponding age-matched control for *clarin 2* CRISPR injected F₀ larvae as normalization control.

Distribution of *clrn2*, phalloidin staining and behavioral analysis in zebrafish

To determine *clrn2* expression, we used in situ hybridization on larvae and inner ear-containing cryosections. The full-length coding sequence of zebrafish *clarin 2* (NM_001114690.1) was PCR amplified from WT zebrafish cDNA using primer pairs with *Bam*HI and *Xho*I restriction sites cloned into the pCS2+ vector (a kind gift from Dr. Dave Turner, University of Michigan). After restriction digestion, the resulting clones were sequenced and used as templates for riboprobe synthesis. The digoxigenin-UTP-labeled riboprobes were synthesized according to the manufacturer's instructions (Millipore Sigma, MO, USA). Briefly, the *clarin 2* and the *pvalb9* plasmids (Horizon Discovery) were linearized by *Bam*HI and *Not*I restriction enzymes, respectively. The linearized plasmid was purified and used as template for in vitro transcription using T7 RNA polymerase to synthesize anti-sense probes. The sense probe was made using *Xba*I linearized *clarin 2* plasmid and SP6 RNA polymerase.

Whole-mount in situ hybridization (WISH) on 3 and 5 dpf zebrafish embryos/larvae was performed following the procedures as described by Thisse et al. with minor modifications (Thisse and Thisse 2008). Age-matched zebrafish embryos were randomly collected by breeding WT zebrafish pairs. The embryos were treated with 0.003% phenylthiourea (PTU) (Millipore Sigma, MO, USA) in embryo medium at 1 day post-fertilization (dpf) until the desired stages reached to reduce the pigment formation that will facilitate color visualization during in situ hybridization. Embryos/larvae were then fixed with 4% (V/V) paraformaldehyde in phosphate-buffered saline (PBS) at 3 and 5 dpf. An additional bleaching step was carried out after fixation by incubating the embryos at room temperature in a 3% hydrogen peroxide and 0.5% potassium hydroxide solution. The permeabilization of 3 dpf embryos and 5 dpf larvae was performed using 2 μ g/mL proteinase K for 12 and 18 min, respectively. Color development was conducted using the BM-Purple alkaline phosphatase substrate (Millipore Sigma, MO, USA).

For preparation of cryo-sectioned samples after WISH, the 5 dpf larvae were soaked in 25, 30% (V/V) sucrose/PBS and optimum cutting temperature (OCT) each for at least 2 days, and embedded in OCT, then Cryotome sectioned at a 10- μ m thickness.

For phalloidin staining of the zebrafish inner ear, 5 dpf larvae were euthanized with tricaine and fixed in 4% (V/V) paraformaldehyde (PFA) at 5 dpf, fixed embryos were

washed by PBSTx (1% PBS, 0.2% triton X-100) and incubated in 2% triton X-100 in PBS at room temperature for overnight with agitation until the otoliths were completely dissolved. The larvae were sequentially washed in PBSTx and incubated with Alexa Fluor 488 Phalloidin (1:50) (Thermo Fisher Scientific, CA, USA) in PBSTw (1% PBS, 0.1% Tween-20) at room temperature for 4 h. The samples were washed in PBSTx after staining and mounted laterally in 75% glycerol on slides. Images were acquired with a Zeiss LSM-710 Confocal microscope.

To perform the acoustic evoked behavioral response (AEBR) test, 6 dpf larvae were placed in a 48-well plate with 200 μ L embryo water and placed in a Zebrabox (View-Point Life Sciences) and embryos were adapted in the dark for 15–30 min (until spontaneous movements were less frequent). The embryos were subjected to a 100 ms, 1 kHz pure tone at 100% target power every 20 s for 4 min (12 stimuli) in the dark. The Zebrabox recorded the animals using infrared light and measured the activity as pixel changes over time. The burst threshold was set at 50 pixels, the freeze threshold set at 10 pixels, and sensitivity was set at 20 pixels. Movement over the 50 pixel burst threshold within the 2 s after stimulus was considered an evoked response. Responses were excluded if the larvae had spontaneous movement within the 2 s before the stimulus. All responses for a larva were excluded if they had spontaneous movement before 6 or more of the stimuli. The response rate was calculated by how many times an embryo had an evoked response out of the total number of stimuli and converted to a percentage.

Production and phenotyping of clarin 2 deficient mutant in mice

The *Clrn2*^{del629} mutant line was generated on a C57BL/6N background by the Molecular and Cellular Biology group at the Mary Lyon Centre (MLC), MRC Harwell Institute, using CRISPR/Cas9 genome editing (Dunbar et al. 2019). The mice were housed and maintained under specific pathogen-free conditions in individually ventilated cages, with environmental conditions as outlined in the Home Office Code of Practice. Animals were housed with littermates until weaned, and then housed with mice of the same sex and of similar ages, which was often their littermates. Both male and female animals were used for all experiments. Animal procedures at the MRC Harwell Institute were licenced by the Home Office under the Animals (Scientific Procedures) Act 1986, UK and additionally approved by the Institutional Animal Welfare and Ethical Review Body (AWERB). The *Clrn1*^{-/-} mice (*Clrn1*^{tm1.2U^{gpa}}, MGI: 6099052) used for comparative scanning electron microscopy analyses were previously described (Dulon et al. 2018).

To screen mice for auditory phenotypes and investigate auditory function, Auditory Brainstem Response (ABR)

tests (measured using a click stimulus and frequency-specific tone-burst stimuli (at 8, 16 and 32 kHz) and Distortion Product Oto-Acoustic Emission (DPOAE) tests (measured using frequency-specific tone-burst stimuli from 8 to 32 kHz with the TDT RZ6 System 3 hardware and BioSig RZ software (Tucker Davis Technology, Alachua, FL, USA)) were performed as described in Dunbar et al., 2019. For scanning electron microscopy imaging, fixed inner ear samples were processed by the osmium tetroxide/thiocarbohydrazide (OTOTO) method, as previously described (Dulon et al. 2018; Dunbar et al. 2019). Samples were visualized with a JSM-6010LV Scanning Electron Microscope (JEOL). Micrographs were pseudo-coloured in Adobe Photoshop.

Statistical analysis

To compare the *clrn2* mRNA expression in zebrafish, data are presented as mean values \pm standard deviation (SD). Statistical analysis was performed using GraphPad Prism version 8.4 (GraphPad Software, San Diego, CA, USA). The significance level was set to 0.05. The p value was determined using a two-tailed unpaired Student's t-test for RT-qPCR of *clrn2* mRNA expression, and a two-tailed unpaired nonparametric Mann–Whitney U test for AEBR analysis. The statistical significance is represented in the figures as *** $p < 0.001$.

To assess ABR thresholds and DPOAE responses in the *Clrn2*^{del629} mice, one-way ANOVA statistical tests were used. Each frequency was tested for statistical significance separately. A threshold of $p > 0.05$ was used to determine if differences were statistically significant. Statistical significance is represented in the figure as follows: *** $p < 0.001$. All data shown are mean \pm SD, and all statistical analyses was performed in GraphPad Prism.

Results

Identification of CLRN2 as a novel deafness gene in a consanguineous Iranian family exhibiting autosomal recessive non-syndromic sensorineural hearing loss

A three generation Iranian family of Lurs ethnicity was ascertained as part of a large ethnically diverse Iranian population rare disease study (Fig. 1a). Three individuals that included the proband (IV-6), his sibling (IV-1), and a cousin (IV-8), born from consanguineous marriages, have reported moderate-to-profound bilateral non-syndromic sensorineural hearing loss (Fig. 1b). The age of onset for these three individuals was between 2 and 3 years of age. Pure-tone air- and bone-conduction audiometry thresholds (Fig. 1b) show evidence of intrafamilial variability. Individual IV-1

has a down sloping audiogram, with bilateral moderate-to-profound deafness. Individual IV-6 presented a moderate-to-severe hearing loss with slightly better hearing at higher frequencies. Both individuals showed normal (type A) tympanograms bilaterally. Speech recognition thresholds for individual IV-1 were 80 and 75 dB at 84 and 88% for right and left ears, respectively, and a most comfortable level of 95 dB. Speech recognition thresholds for individual IV-6 were 75 and 80 dB, each at 84%, for right and left ears, respectively. Patients have normal neuromotor, speech and language development, and did not show signs of impaired balance. No other abnormalities, including potential vision deficit, were present in the affected individuals, who were last evaluated at the age of 29 (IV-1), 44 (IV-6), and 25 (IV-8) years. For comparison, pure-tone audiometry was also recorded from a family member (V-1), with no reported history of hearing deficits.

To identify the underlying genetic lesion, genome-wide linkage analysis identified one single significant maximum LOD score of 3.8 on chromosome 4 (Supplementary Fig. S1a–b). Linkage analysis and haplotyping with the dense marker set showed the adjacent markers rs7690593 and rs608053 (GRCh37/hg19, chr4: 17,298,007–32,261,222 bp, hg19). The homozygous region spans 14.96 Mb and overlaps with the *CLRN2* gene position (Fig. 1c). As a second independent method, we applied homozygosity mapping in the extended family to identify a 15.2 Mb locus on chromosome 4p15.32p15.1 (GRCh37/hg19, chr4:17,298,445–32,495,165), defined by the SNPs rs7692897 and rs17081424 (Supplementary Fig. S1c, Supplementary Table S2) that mirror the linkage results. This locus contains 30 genes, none of which are presently associated with deafness in humans (Supplementary Table S2). This approach also revealed four much smaller homozygous intervals on chromosomes 2p21 (137.3 kb), 3p22.2 (262.5 kb), 13q13.1 (90.7 kb), and 17q21.31 (292.6 kb) (Supplementary Fig. S1c, Supplementary Table S2) that do not contain known deafness-associated genes (Supplementary Table S2). Pathogenic copy number variations were excluded. Next, we undertook exome sequencing of affected individual IV-6 (arrow, Fig. 1a). This generated 56,387,543 mappable reads, with 75.5% on-target reads. The mean depth was 57.3-fold, with 97.3% of regions with a tenfold read depth. Analysis of the exome data of individual IV-6 excluded any candidate pathogenic variants in known deafness-associated genes (Doll et al. 2020) prompting an exome-wide analysis followed by filtering and re-analysis of variants in homozygous intervals (Supplementary Table S3). Further, close inspection of the exome sequencing data revealed complete sequencing coverage of genes in the homozygous intervals (Supplementary Table S4). Variant filtering detected a single homozygous missense variant in *CLRN2* c.494C > A, (p.(Thr165Lys)) (NM_001079827.2) in the linked and

homozygous interval on chromosome 4 (Supplementary Fig. S1a–c). This variant was shared with individual IV-1 and segregated in the extended family comprising a total of 14 individuals (Fig. 1a, d) and was the only remaining variant in the locus fulfilling variant filtering criteria. Only individuals homozygous for the *CLRN2* c.494C > A variant exhibit hearing loss confirming the recessive nature of the allele (Fig. 1a). This variant fulfills ACMG criteria for classification as likely pathogenic (PM2_Moderate, PP1_Strong, PP3_Supporting).

The *CLRN2* c.494C > A leads to a likely pathogenic missense substitution and aberrant splicing

The c.494C > A variant on chromosome 4p15.32 is unambiguously predicted to be deleterious and disease causing by in silico tools (Supplementary Table S5). The c.494C > A variant in *CLRN2* replaces a polar uncharged amino acid (threonine) with a positively charged amino acid (lysine) in clarin 2, (p.(Thr165Lys)) (Creixell et al. 2012). This variant, as well as homozygous loss-of-function alleles, are absent in population frequency databases. This suggests *CLRN2* is intolerant to biallelic loss-of-function. Our in-house collection of 89,041 additional exomes/genomes, including a multiethnic cohort of 842 exomes from probands with autosomal recessive hearing loss, identified four individuals from three families of Iranian, Turkish, and Emirati ethnicities, who carried the *CLRN2* c.494C > A variant (allele frequency 2.24×10^{-5}). An Iranian hearing impaired individual was included among the carriers.

The c.494C > A variant involves the exchange of a novel polar threonine (Thr) residue to a basic lysine (Lys) amino acid that affects a highly conserved amino acid in the alpha-helix of the PMP-22/EMP/MP20/Claudin superfamily domain (Fig. 2a–c). Among clarin proteins, clarin 2 and clarin 1 show 34.9% identity with 81 identical and 91 similar amino acids (using UniProt (UniProt Consortium 2018), Fig. 2b). The outcome of *CLRN1* pathogenic or likely pathogenic missense variants, as well as nonsense variants (queried from the Deafness Variation Database v8.2 (Azaiez et al. 2018)) are marked in red (Fig. 2b) along with the clarin 2 p.(Thr165Lys) amino acid substitution (Fig. 2b, asterisk). Interestingly, nine out of the 19 clarin 1 amino acid mutated residues are identical in clarin 2. Three clarin 1 amino acid substitutions (p.(Leu163Pro), p.(Leu167Trp), and p.(Ile181Asn), NP_001182723.1) align in close proximity to the clarin 2 p.(Thr165Lys). Furthermore, clarin 1 p.Leu163Pro (Fields et al. 2002) and p.Ile181Asn (García-García et al. 2012), that are both reported in USH3A, are p.Leu150 and p.Ile168 in clarin 2. Most importantly, the threonine residue at position 165 (Thr165) *CLRN2* is conserved across species and the corresponding amino acid in clarin 1 is a serine residue (Fig. 2a–b), a scenario often

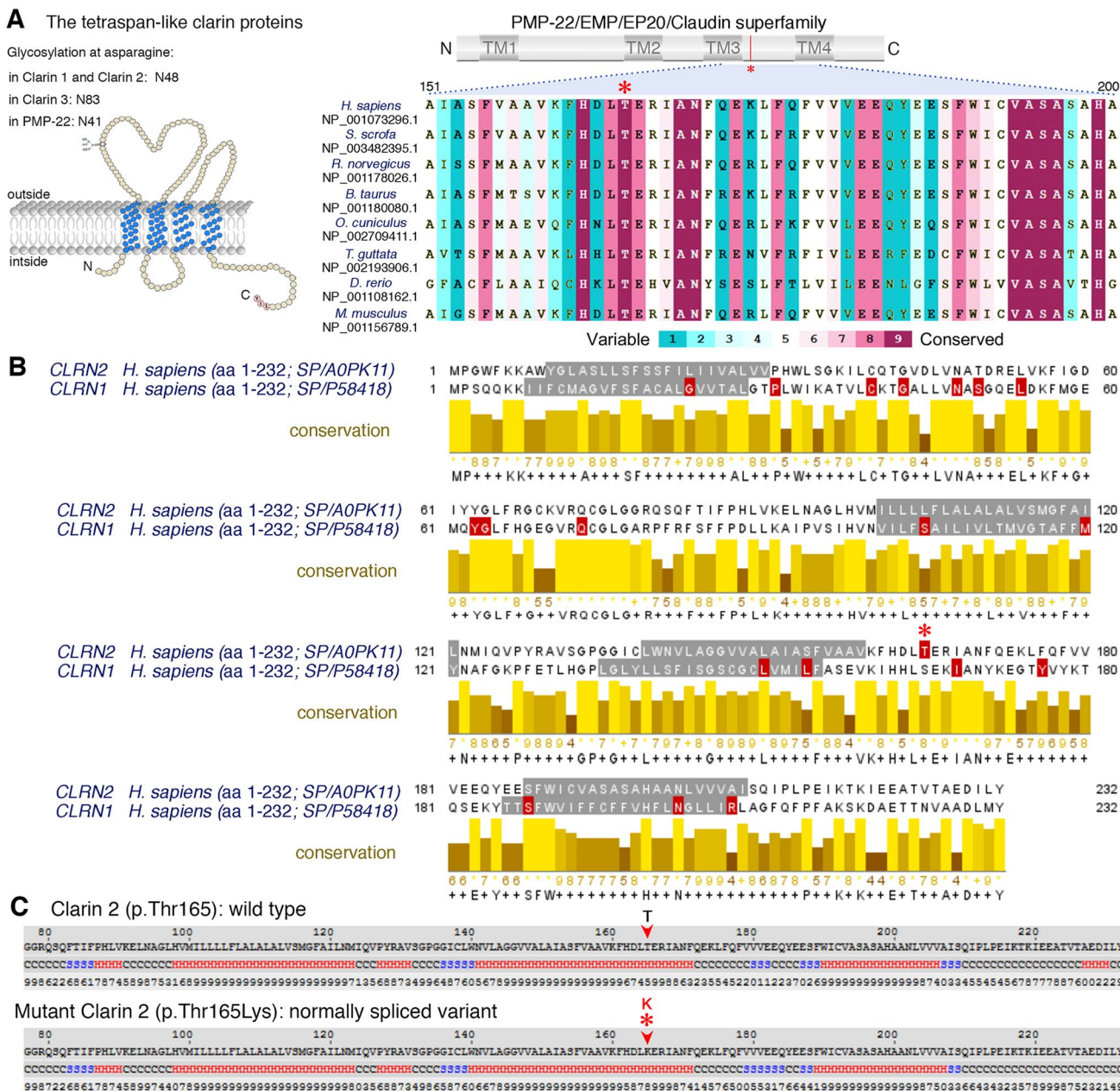


Fig. 2 Conservation of the p.Thr165 residue, and clarin 1/clarin 2 alignment. **a** Overview of clarin 2 protein and modular structure of the PMP-22/EMP/EP20/Claudin superfamily, with amino acid residue coordinates and position of the p.(Thr165Lys) substitution shown (upper panel). An alignment of the amino acid sequences from the segment of clarin 2 (represented by dashed lines) from vertebrate species shows the Thr165 position (asterisk) is well conserved among vertebrates. **b** Alignment of clarin 2 (UniProtKB: A0PK11, upper alignment) and clarin 1 (UniProtKB: P58418, lower align-

ment) amino acid residues. Transmembrane domains are marked in grey, conservation is shown in yellow, and consensus sequences are shown below for the 232 amino acid proteins. Missense and nonsense variants in clarin 1 (Deafness Variation Database v8.2) and clarin 2 (present study, asterisk) are marked in red. **c** The predicted secondary structure of human clarin 2 (NP_001073296.1) wild-type (Thr165) and mutated (Thr165Lys) protein. H represents alpha-helix, S represents beta-strand and C represents coil

associated with conserved phosphorylation site residue, here by serine/threonine protein kinases (Creixell et al. 2012). In addition to causing an amino acid missense substitution, computational analysis also predicts that the c.494C > A variant will create an exonic splicing enhancer

(ESE) motif, modifying the ESE hexameric sequence landscape of exon 3, which could interfere with the normal processing of *CLRN2* mRNA (Figs. S2a–b; ESEfinder and RESCUE-ESE, Human Splicing Finder) (Cartegni et al. 2003; Desmet et al. 2009; Fairbrother et al. 2004). To investigate

the effect of the c.494C > A variant on *CLRN2* splicing, we used mini-gene assays using two different exon-trapping vectors and three different cell lines, Cos-7, ARPE-19, and HEK 293 T. The mini-gene contained the 3' end of intron 2, all of exon 3 (with and without the *CLRN2* variant), and ~ 50 bp of the 3' UTR (Fig. 3a) and was transfected into COS-7 and ARPE-19 cells. As a negative *CLRN2* control, we used the rs117875715 SNP, a common polymorphism, with a global MAF of ~ 1.25% and > 100 homozygous alleles reported in

gnomAD (Lek et al. 2016) (<http://gnomad.broadinstitute.org/variant/4-17528480-G-A>) that is 20 nucleotides away from c.494C > A. Given its frequency, rs117875715 is predicted to be benign for hearing loss. Of note, this polymorphism is absent in the proband and family members reported here. Since exon 3 is the last exon of *CLRN2*, we designed our PCR primers to exclude the human poly-A signal and used the poly-A signal native to the pET01 vector. As expected for WT *CLRN2* (c.494C), we detected the splicing of the 5'

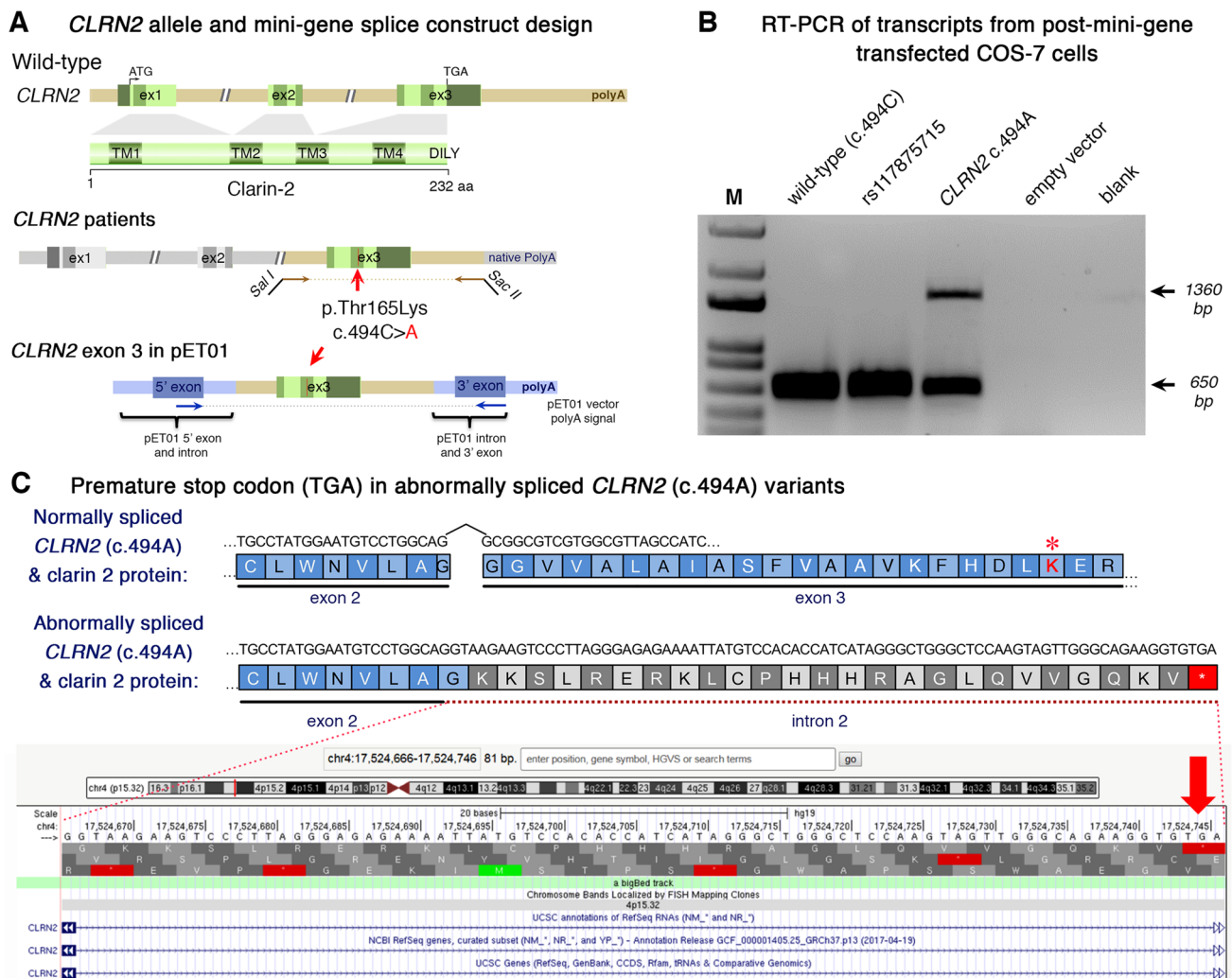


Fig. 3 Analysis of the *CLRN2* c.494C > A variant on splicing. **a** Schematic illustration of the mini-gene splice construct design. Genomic representation of *CLRN2*, including the position of the missense variant c.494C > A (arrow) on exon 3 with 3' UTR (green), and the 5' UTR, as well as exons 1 and 2 (grey) (upper panel). Regions captured by mini-gene PCR primers are represented in brown. Schematic illustration of the mini-gene splice construct including exon 3 and its flanking sequence (green) cloned into multiple cloning sites (*Sal*I and *Sac*II sites) of pET01 backbone vector (lower panel). Blue boxes represent native exons of the pET01 vector. **b** RT-PCR of transcripts from post-mini-gene transfected COS-7 cells. Amplicons derived from the transcripts of WT (*CLRN2*), a benign *CLRN2* polymor-

phism (rs117875715, chr4(GRCh37):g.17,528,480G > A), the *CLRN2* c.494C > A variant and a negative control, were visualized on a 1.5% agarose gel. The SNP, rs117875715, was used to test and validate the designed WT and mutant mini-gene assay. The ~ 650 bp amplicon was associated with the WT and validation control rs117875715. The amplicon derived from the *CLRN2* c.494C > A transcripts showed two bands: a 650 bp band and a larger ~ 1360 bp band, indicating retention of intron separating the donor site of the 5' exon and the acceptor site of *CLRN2* exon 3. **c** Retention of intron in *CLRN2* c.494C > A mini-gene results in a stop codon (TGA) after *CLRN2* exon 2

native pET01 exon only to exon 3 of *CLRN2* (Fig. 3a–b). The same normal splicing was obtained in all cell types transfected with *CLRN2* containing the control (rs117875715) variant (Fig. 3b). However, the c.494C>A variant yielded two bands; one ~650 bp band matching the expected normally spliced exon, and a second abnormal band that was approximately ~1360 bp (Fig. 3b). Sequencing of these amplicons validated normal splicing including the c.494A variant and also revealed a retained intron 2 in the aberrantly spliced transcript (Supplementary Fig. S3c). The retention of intron 2 results in a new reading frame that introduces a stop codon 26 amino acids after the native exon 2 splice site (p.(Gly146Lysfs*26)) (Fig. 3c). These results were replicated using the pSPL3b vector and HEK 293 T cells (Supplementary Fig. S3a–c), confirming the c.494C>A induced normal and aberrant splicing, independent of the cell type context. Following TA-cloning of cDNA amplicons from the homozygous individual (from Supplementary Fig. S3b), 23 of 26 amplicons (88.5%) showed normal splicing, and 3 of 26 amplicons (11.5%) showed a retained intron.

The mini-gene splicing assays and sequence analyses clearly show that the c.494C>A affects a highly conserved and key residue in clarin 2 sequence, while also creating aberrant mRNA splicing in vivo likely leading to a truncated protein. Altogether, this further confirms that variants in *CLRN2* can lead to sensorineural hearing loss.

***Clnr2*, a hair cell expressed gene key to hearing also in zebrafish and mice**

To further study the role of clarin 2 in the inner ear, we investigated its expression and analyzed potential impact of *Clnr2* loss-of-function in two other species, zebrafish and mice.

***clnr2* in zebrafish**

Taking advantage of larva transparency, we used zebrafish as a model to investigate the *clarin 2* expression during early embryonic development. The RT-qPCR at different developmental stages revealed that *clnr2* mRNA was first detected at 18 hpf (Fig. 4a), a stage when the otic placode begins to form the otic vesicle in zebrafish (this stage is similar to mouse embryonic day 9 (E9), a stage of otic placode formation) (Kopecky et al. 2012; Whitfield et al. 2002). *clnr2* mRNA expression increased (twofold at 72 and 96 hpf compared to 18 hpf) and was maintained at later stages, up to 120 hpf (Fig. 4a). Comparative analyses of *clnr2* mRNA expression in different adult tissues of zebrafish revealed a significant enrichment in utricle, saccule and lagena of the inner ear (Fig. 4b). Our data are in agreement with RNA expression data from the Genotype-Tissue Expression (GTEx) project, wherein *CLRN2* mRNA in humans is enriched in the nervous

system, testis, kidney, salivary gland, and lung. *CLRN1* has a similar expression profile in humans.

To determine *clnr2* cellular expression, we used WISH in the inner ear of 3 and 5 dpf embryos (Fig. 4c–d). Unlike the *clnr2* sense probe, the anti-sense *clnr2* revealed strong expression in the otic vesicle, similar to the expression of anti-sense *pvalb9*, used as a marker of hair cells (Fig. 4c). Histological examination of 5 dpf embryos further confirmed that *clnr2* expression is more specifically, restricted to hair cells, and is not expressed in the supporting cells of the inner ear (Fig. 4d).

To elucidate the function of *clnr2* in zebrafish, we used CRISPR/Cas9 to generate loss-of-function alleles. To maximize the knockout efficiency, we used five sgRNAs targeting the first and second exon of *clnr2* gene (Supplementary Fig. S4). Injected embryos (crisprants) were sequenced and, as expected, a mix of alleles in the form of deletions ranging from 4 to 73 bp, as well as insertions spanning +1 to +11 bp were observed. The majority of the variants were frameshift that would most likely create a premature stop codon in the protein (Supplementary Fig. S4). The RT-qPCR analyses on injected embryos showed that *clnr2* crisprants have a significantly reduced amount of *clnr2* mRNA (Fig. 4e), suggesting nonsense mediated decay, leading to disrupted clarin 2 protein function.

To test acoustic responses, we performed the AEBR analysis. The *clnr2* crisprants showed significantly reduced response after sound stimulation (Fig. 4f) compared to the control animals, indicating a hearing loss phenotype. Considering *clnr2* expression in hair cells (Fig. 4d), we investigated the architecture of their mechanosensory hair cell bundles, which are important for hearing and balance function in zebrafish. Interestingly, fluorescent phalloidin staining of the hair bundles of the inner ear in *clnr2* crisprants ($n=10$) showed disrupted hair bundle structure and fewer hair cells compared to the WT controls (arrowheads in Fig. 4g). This defective phenotype, suggesting a critical role in hair bundle structures, is similar to the hair bundles in zebrafish *clnr1* knockouts (Gopal et al. 2015), the *orbiter* mutants (defective in *protocadherin 15* (*pcdh15*), a gene associated with human Usher syndrome 1F) (Seiler et al. 2005) and *ush1c* morphants and *ush1c* mutants (Phillips et al. 2011).

***Clnr2* in mice**

To further assess the requirement of clarin 2 for auditory function in mammals, and assess further its role in auditory hair bundles, we extended our analyses to mouse. Consistent with expression data in zebrafish (Fig. 4a, c–d), single cell RNA-seq data available to visualize on the gEAR portal (umgear.org) show that in the mouse cochlear epithelium at postnatal day 1 (P1) and P7, *Clnr2* transcripts are almost exclusively detectable only in inner and outer

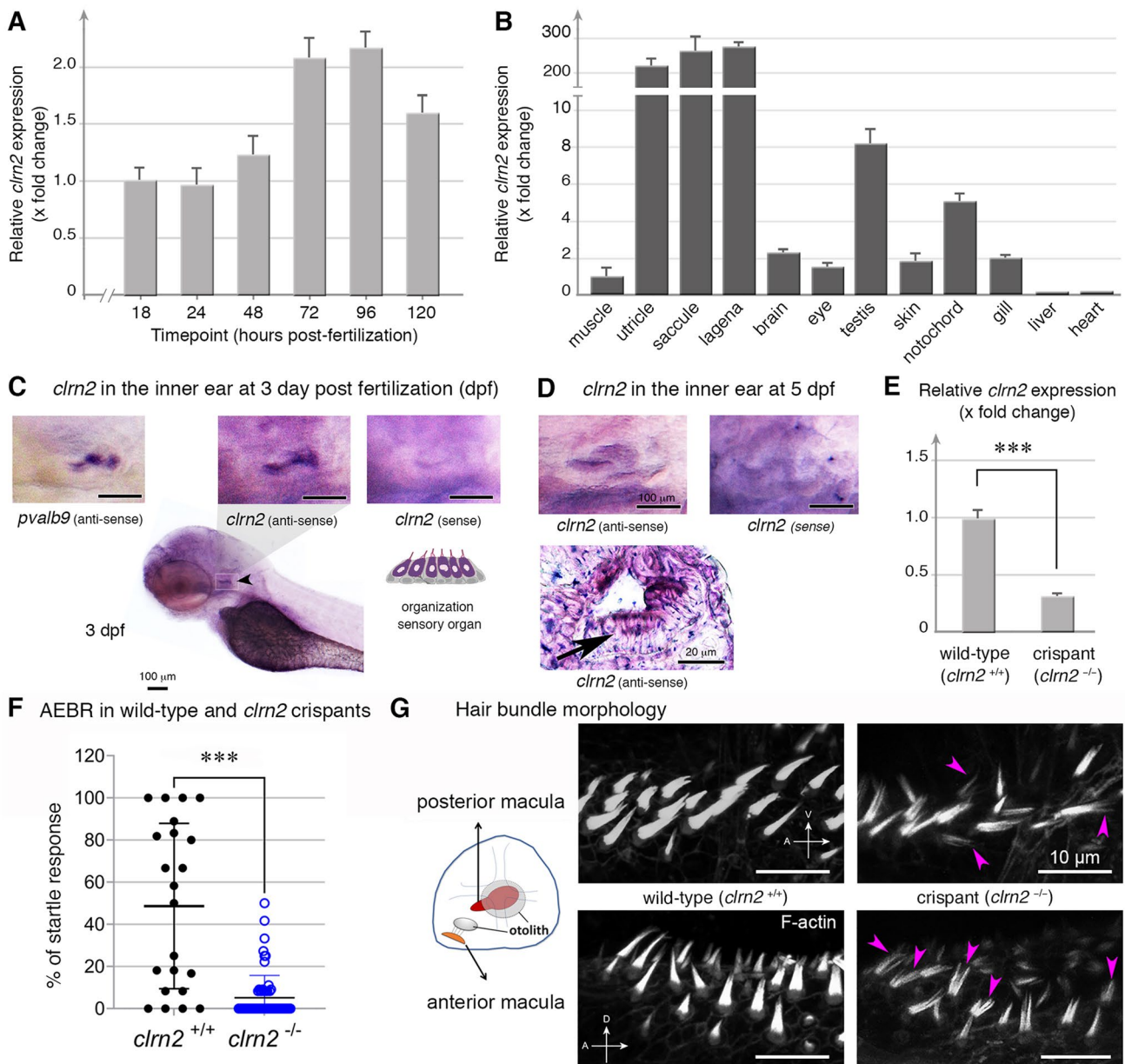


Fig. 4 Clarin 2 is required for the inner ear function in zebrafish. **a** RT-qPCR of *clrn2* mRNA expression from 1 to 120 hpf of WT embryos/larvae. *clarin 2* mRNA expression can be detected starting from 18 hpf and then increased throughout development. Data shown are mean \pm SD and compared to 18 hpf. **b** RT-qPCR of *clrn2* mRNA expression in different adult tissues. Data shown are mean \pm SD and compared to muscle. **c–d** Whole-mount in situ hybridization (WISH) using antisense *clrn2* probe reveals the inner ear expression of *clrn2* mRNA (relative dark purple color, black arrowhead) at 3 (**c**) and 5 (**d**) dpf embryos. Sense *clrn2* probe was used as negative control and relative light purple color is considered as background. *clrn2* mRNA was consistently expressed in hair cells within inner ear macula (**c–d**) with lined and arrayed structure. A known hair cell marker *pvalb9* was used as an indicator for hair cells in the inner ear of 3

dpf embryos (**c**). Cryosection was performed after *clrn2* WISH at 5 dpf to confirm the small patch of signal on the macula is from hair cells rather than supporting cells (**d**, black arrow lower panel). Scale bar = 100 μ m, except lower panel in **D** (20 μ m). **e** RT-qPCR of *clrn2* mRNA expression level was decreased 70% in *clrn2* crispants compared to uninjected larvae, indicating *clrn2* was successfully knocked out ($p = 2.06E-06$). Data shown are mean \pm SD. $***p < 0.001$, two-tailed unpaired Student's *t* test. **f** Acoustically evoked behavioral responses (AEBR) in *clrn2* wild type and crispants reveal significant reduction of sound induced responses. **g** Phalloidin staining on *clrn2* crispants show that the hair cells in the inner ear anterior and posterior maculae display splayed, thin and split structures (purple arrowheads). A, anterior to the left. D, dorsal to the top. V, ventral to the top. Scale bar = 10 μ m

hair cell populations (Kolla et al. 2020) (see also Supplementary Fig. S5). We utilized a CRISPR/Cas9-engineered *Cln2* mouse mutant, in which exon 2 has been deleted (*Cln2*^{del629}) (Fig. 5a). While this deletion leaves exon 3 in-frame with exon 1, exon 2 encodes two of the transmembrane domains present in the tetraspan clarin 2 protein (lower panels Fig. 5a), and is therefore expected to severely affect protein function. In a preliminary work focused on *clarinet* mice, which display a nonsense *Cln2* mutation, p.(Trp4*), we showed that addition of the *Cln2*^{del629} allele

into the *clarinet* background, *Cln2*^{clarinet/del629}, was unable to complement the *clarinet* allele causing hearing loss in these mice, indicating *Cln2*^{del629} is also a loss-of-function allele (Dunbar et al. 2019). Here, we provide the first morpho-functional characterization of *Cln2*^{del629/del629} mice, which, unlike the previously reported *clarinet* mice, are congenic on the C57BL/6N background, and measured ABRs in P21 (± 1 day) mice in response to click and tone-burst stimuli.

Analysis of ABR thresholds, which is the lowest sound stimulus required to elicit measurable activity in the auditory

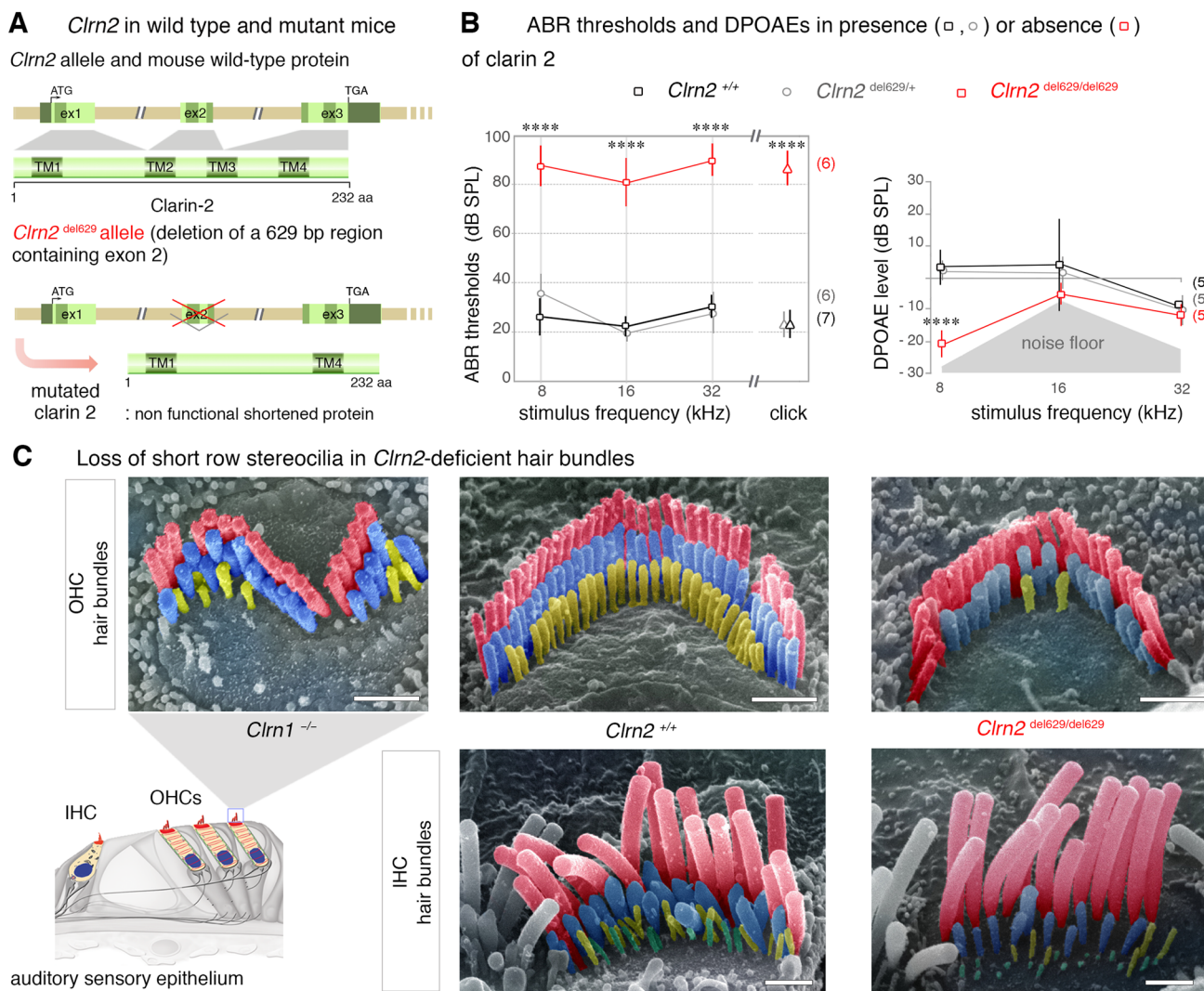


Fig. 5 Clarin 2 is required for hearing function in mouse. **a** The genomic structure of mouse *Cln2* (ENSMUST00000053250), and domains of the encoded tetraspan-like glycoprotein (232 amino acids). The positions of the transmembrane (TM) domains (dark green) and the structures of the WT *Cln2* and *Cln2*^{del629} alleles are indicated. Deletion of exon 2 leads to a shortened clarin 2 lacking the two central transmembrane domains. **b** ABR threshold measurements at P21 (± 1 day) show that *Cln2*^{del629/del629} mice (red) exhibit a severe-to-profound hearing loss affecting all frequencies tested, with thresholds at 80 dB SPL and beyond. Age-matched *Cln2*^{+/+} (black) and *Cln2*^{del629/+} (grey) controls display thresholds within the expected range (15–40 dB SPL). Averaged DPOAE

responses at P28 (± 1 day), showing significantly reduced responses in *Cln2*^{del629/del629} mice. Data shown are mean \pm SD. $**p < 0.001$, one-way ANOVA. **c** Pseudo-colored scanning electron micrographs illustrate the three full rows, tallest (red), middle (blue) and short (yellow), of P28 (± 1 day) stereocilia in IHC and OHC hair bundles. Unlike the fragmented hair bundle in *Cln1*^{-/-} mice, lack of clarin 2 does not affect the shape of IHC or OHC hair bundles. However, all the short row stereocilia have completely or partially regressed in the absence of either clarin protein. Scale bar = 1 μ m

nerve, showed that homozygous (*Clrn2*^{del629/del629}) mice display very elevated thresholds (> 80 decibel sound pressure level (dB SPL)) at all frequencies tested: 8, 16 and 32 kHz (Fig. 5b). Whereas, *Clrn2*^{del629/+} mice exhibit thresholds comparable with those of WT (*Clrn2*^{+/+}) littermates (< 40 dB SPL), demonstrating the absence of a heterozygous auditory phenotype (Fig. 5b).

To further assess cochlear function, DPOAEs were measured in P28 (± 1 day) *Clrn2*^{del629/del629} mice. Compared to their *Clrn2*^{+/+} and *Clrn2*^{del629/+} littermates, *Clrn2*^{del629/del629} mice have reduced DPOAEs (Fig. 5b) suggesting impaired outer hair cell (OHC) function.

To investigate stereocilia bundle morphology in *Clrn2*^{del629/del629} mice, we used scanning electron microscopy to examine the cochlear sensory epithelia. At P28 (± 1 day), the inner and outer hair cell stereocilia bundles of *Clrn2* mutant mice display the expected U- and V-shape, respectively, which contrasts with the grossly misshapen OHC bundles found in *Clrn1* mutant mice (Fig. 5c). However, while the patterning of the bundles appears normal in *Clrn2*^{del629/del629} mice the heights of their middle and short row stereocilia are visibly more variable compared with those of *Clrn2*^{+/+} littermates, and many of the short row ‘mechanotransducing’ stereocilia are missing (Fig. 5c).

Together, our findings establish that clarin 2 is key to hearing function in zebrafish and mouse, supporting that this protein has an evolutionary conserved role in the maintenance of hair bundle architecture in fish and mammals.

Discussion

We identify *CLRN2* as a novel deafness gene in human and zebrafish and describe a new deafness-causing allele in mice. Genetic study using gene mapping and exome sequencing of an extended Iranian family with multiple consanguineous marriages identified a pathogenic variant, c.494C > A in exon 2 of *CLRN2* segregating with pre-lingual ARNSHL. Due to restricted expression of *CLRN2* in accessible tissues such as blood or saliva, we performed in vitro splice analysis. The c.494C > A variant results in a missense and splicing defect in clarin 2. By producing mutant zebrafish and mice lacking clarin 2, we demonstrated the key role the protein plays to ensure normal structural and functional integrity of the hair bundle, the sound- and motion-receptive structure of inner ear hair cells.

The clarin gene family also includes the *CLRN1* gene. Pathogenic variants in *CLRN1* have been linked to variable clinical outcomes, ranging from non-syndromic RP (Khan et al. 2011) to USH3A characterized by variable and progressive post-lingual hearing loss, RP, and variable vestibular responses (Plantinga et al. 2005). Several cases of later onset HL and/or RP, as late as the sixth decade of life, have

been reported for USH3A patients (Ness et al. 2003). Clinical examination of affected individuals in this family, at the age of 25 (IV-8), 29 (IV-1), and 44 (IV-6) years of age, excluded the presence of additional syndromic features showing that homozygosity for the c.494C > A variant causes non-syndromic hearing loss, ranging from moderate-severe (IV-6) to profound (IV-1) deafness. In regard to the observed progressivity of the hearing impairment in *clarinet* mice (Dunbar et al. 2019), the earliest reported clinical diagnosis of hearing loss of the *CLRN2* affected individuals in the family we present is between 2 and 3 years of age. Newborn hearing screening was not routinely performed when the affected individuals were born, so we cannot confirm hearing was normal at birth. In light of absent serial audiograms, we cannot report if the hearing loss experienced in these patients is progressive, as is observed in the mouse model (Dunbar et al. 2019). So far, we could not identify, through our current network, additional families with *CLRN2* variants. Featuring *CLRN2* as a new human deafness gene, future genetic screenings of hearing impaired families worldwide will probably unveil additional *CLRN2* families and provide important clues about associated clinical phenotype progression and severity.

Our data showed that the *CLRN2* c.494C > A variant probably affects protein function in two ways: (1) as a missense variant (p.(Thr165Lys)) producing a mutant full length protein and (2) as a splice variant leading to intron retention (Fig. 3b, and Supplementary Fig. S3b–c) expected to cause a premature stop codon 26 amino acids into intron 2 (p.(Gly146Lysfs*26)).

In normally spliced *CLRN2* transcripts, the c.494C > A variant affects an amino acid that is highly conserved among PMP-22/EMP/EP20/Claudin superfamily proteins. Two potential mechanisms could synergistically contribute to the disruptive effect of the missense variant. *First*, the replacement of threonine with lysine, an amino acid with a positively charged ‘bulky’ side chain (lysine), may affect protein folding (Creixell et al. 2012) and transport to the plasma membrane. Membrane proteins sort to the plasma membrane via the conventional secretory pathway associated with ER-to-Golgi complex (Viotti 2016). Misfolded membrane proteins are typically retained in the endoplasmic reticulum (ER) and degraded by the ER-associated degradation pathway (Kincaid and Cooper 2007; Sano and Reed 2013). It is possible that a small fraction of the misfolded clarin 2 p.(Thr165Lys) could reach the plasma membrane via the unconventional secretory pathway, similar to that reported for clarin 1 p.(Asn48Lys) (p.(N48K)) (Gopal et al. 2019). The unconventional secretory pathway is induced by the ER-associated misfolded or unfolded protein response (Kinseth et al. 2007; Schröder and Kaufman 2005). However, the mutant clarin 2 reaching the surface may be functionally inactive. *Second*, evolutionarily conserved threonine residues are also conserved protein phosphorylation

sites. Phosphorylation adds a negative charge to the side chain of the amino acid and it serves as an important post-translational mechanism for regulation of protein function (Pearlman et al. 2011). Loss of threonine at position 165 would potentially prevent functional activation of clarin 2. As our attempts to discriminate impact of the amino acid substitution in a human cell line yielded no conclusive results (KNA, unpublished data), additional experiments in an in vivo context are essential to test these hypotheses and unravel the true pathogenic mechanism associated with the p.(Thr165Lys) missense variant.

With respect to the aberrantly spliced *CLRN2* transcripts, variants that disrupt splicing machinery signals are recognized as significant contributors to human genetic diseases (Xiong et al. 2015), with variants shown to impact accurate recognition and removal of intronic sequences from pre-mRNA (Fairbrother et al. 2004). ESE sequences are cis-acting elements primarily recognized by the SR family proteins that function by recruiting core splicing machinery components to splice sites or by acting antagonistically against nearby silencing elements (Fairbrother et al. 2004; Graveley 2000; Kan and Green 1999). ESEs are often associated with introns that contain weak splicing signals, but they can also reside in exons and impact the splicing process. Using mini-gene assays in human cell lines, we could show that the *CLRN2* variant-induced aberrant splicing amounts to 10–15%, but its occurrence and rate in a biological context remains to be established. We, however, expect that the partial (only 3 out of 4 TM domains) and truncated (lack of C-terminal region) protein resulting from aberrant splicing due to *CLRN2* c.494C>A variant is non-functional. Indeed, the integrity of all 4 TM domains seems to be necessary for a functional clarin tetraspan protein. This is supported by our data in *Clrn2^{del629/del629}* mice where transcripts lacking exon 2 do exist, but if translated would result in a predicted protein lacking the two central transmembrane domains. The severe hearing loss observed in these *Clrn2^{del629/del629}* mice clearly indicate that such partial clarin protein is insufficient to ensure normal hearing.

Repeated attempts to detect endogenous clarin 2 in the inner ear, under various conditions of fixation and antigen-retrieval at different postnatal stages were unsuccessful. We therefore used in situ hybridization in zebrafish and in silico analyses in mouse to confirm predominant expression of *Clrn2* in the sensory hair cells. To examine further the key role of clarin 2 in the inner ear, we generated zebrafish and mice lacking a functional protein. ABR measurements in *Clrn2^{del629/del629}* mice revealed an early-onset hearing loss with elevated hearing thresholds compared with their *Clrn2^{+/+}* littermate controls (mean click threshold 87 dB SPL \pm 7 s.d. and 24 dB SPL \pm 6 s.d., respectively). These data are consistent with early-onset hearing loss observed in another loss-of-function *Clrn2* mutant (*Clrn2^{clarinet}*), which harbors an early truncating nonsense variant (p.Trp4*)

(Dunbar et al. 2019). However, comparison with the previously reported *Clrn2^{clarinet}* P21 ABR data suggests that the extent of hearing loss in age-matched *Clrn2^{del629}* mice is more severe and less variable, which is most evident in the click ABR measures (80 \pm 15 dB SPL and 87 \pm 7 dB SPL, respectively). This difference could be due to strain effect, with the *Clrn2^{clarinet}* mice being on a C57BL/6J background and the *Clrn2^{del629}* mice being on, the related but distinct, C57BL/6N (Simon et al. 2013). Interestingly, startle response measurements in *clrn2* zebrafish crispants also reveal significant reduction in sound-induced responses. This, together with the severe-to-profound hearing loss already exhibited at P21 and the reduced DPOAEs in both *Clrn2^{del629/del629}* and in *Clrn2^{clarinet/clarinet}* mice (Dunbar et al. 2019) points to gene defects likely affecting both inner hair cells (IHCs) and OHCs. This is further supported by scanning electron microscopy data showing loss of shortest row stereocilia in both the cochlear IHCs and OHCs. Phalloidin staining of *clrn2* crispants also confirms hair bundle abnormalities in zebrafish. The loss of the mechanotransducing stereocilia, here the short stereocilia row in *Clrn2^{del629/del629}* and in *Clrn2^{clarinet/clarinet}* mice is similar to that observed in hair cells defective for components of the mechano-electrical transduction machinery. Electrophysiological recordings in OHCs of clarinet mice did indeed show that lack of clarin 2 causes significant reduction in hair cell mechano-electrical transduction activity (Dunbar et al. 2019). However, whether the loss of short row stereocilia is a downstream consequence of defective MET activity or due to yet unknown structural changes in the stereocilia remains to be established.

In conclusion, we demonstrate the c.494C>A variant affects exon 3 splicing efficiency. We showed, for the first time, that *CLRN2* is a deafness-causing gene in humans. A variant causes hearing loss in humans, replicated by animal studies. Additional reports of families segregating *CLRN2* biallelic variants will be crucial to refine and dissect the clinical course and characteristics of hearing loss due to this gene. Together, our studies in zebrafish and mice establish that hearing loss is probably due to defective protein in the hair cells, where the presence of clarin 2 is essential for normal organization and maintenance of the mechanosensitive hair bundles.

Acknowledgements We would like to extend our gratitude to the family for their participation. We thank Dr. Caroline Lekszas, Dr. Daniel Liedtke, and Dr. Indrajit Nanda from the Institute of Human Genetics at the University of Würzburg for their technical expertise. This work was supported by Intramural Funding (fortune) at the University of Tübingen (2545-1-0 to B.V.), the Ministry of Science, Research and Art Baden-Württemberg (to B.V.), the Medical Research Council (MC_UP_1503/2 to M.R.B.), ANR light4deaf (ANR-15-RHUS-0001), HearInNoise (ANR-17-CE16-0017), LHW-stiftung (to A.E.), and a grant from NIH/COBRE GM103636 (Project 3); the Presbyterian

Health Foundation (PHF) Grant to G.K.V. This study was funded in part by NIDCDs R01s DC002842 and DC012049 to R.J.S and T32 GM007748 to K.T.B. L.A.D is a Medical Research Council DPhil student (1774724).

Author contributions BV, HA, KTB, and AR conducted in vitro studies. SJL, LAD, SV, PV, CP, SVK, AE and MRB conducted in vivo studies. BF performed histology. BV, NM, RM, HA, KTB and HG performed genomic studies. NM, AS, GS, and HG identified patients, collected and analyzed clinical data, provided the biological specimens. RM, HA, KTB, FR, CB, DM, and HH conducted database analyses and data sharing. BV, RM, HA, KTB, KNA, RJHS, TH, AE, MRB and GKV wrote the manuscript. BV, HA, TH, RJHS, AE, MRB, GKV and HG supervised and conceived the study.

Funding Open Access funding enabled and organized by Projekt DEAL. This work was supported by Intramural Funding (fortune) at the University of Tübingen (2545-1-0 to BV), the Ministry of Science, Research and Art Baden-Württemberg (to BV), the Medical Research Council (MC_UP_1503/2 to MRB), ANR light4deaf (ANR-15-RHUS-0001), HearInNoise (ANR-17-CE16-0017), LHW-stiftung (to AE), and a grant from NIH/COBRE GM103636 (Project 3); the Presbyterian Health Foundation (PHF) Grant to GKV. This study was funded in part by NIDCDs R01s DC002842 and DC012049 to RJS and T32 GM007748 to KTB. LAD is a Medical Research Council DPhil student (1774724).

Data availability All data needed to evaluate the conclusions in the paper are present in the paper and/or the Supplementary Materials. Additional data related to this paper may be requested from the authors.

Compliance with ethical standards

Conflicts of interest CB is an employee of Centogene AG (Rostock, Germany).

Ethical approval Human studies were approved by the Faculty of Medicine ethics commissions at the University of Würzburg (46/15) and Shahid Chamran University of Ahvaz (#EE/97.24.3 17654). All zebrafish experiments were performed as per protocol (17-01) and approved by the Institutional Animal Care Committee of Oklahoma Medical Research Foundation (OMRF) (IACUC). Mouse studies at the MRC Harwell Institute were licenced by the Home Office under the Animals (Scientific Procedures) Act 1986, UK and additionally approved by the Institutional Animal Welfare and Ethical Review Body (AWERB).

Informed consent to participate Written informed consent was obtained from all participants.

Informed consent for publication Consent for publication was obtained from all participants.

Open Access This article is licensed under a Creative Commons Attribution 4.0 International License, which permits use, sharing, adaptation, distribution and reproduction in any medium or format, as long as you give appropriate credit to the original author(s) and the source, provide a link to the Creative Commons licence, and indicate if changes were made. The images or other third party material in this article are included in the article's Creative Commons licence, unless indicated otherwise in a credit line to the material. If material is not included in the article's Creative Commons licence and your intended use is not permitted by statutory regulation or exceeds the permitted use, you will

need to obtain permission directly from the copyright holder. To view a copy of this licence, visit <http://creativecommons.org/licenses/by/4.0/>.

References

- Abecasis GR, Cherny SS, Cookson WO, Cardon LR (2001) GRR: graphical representation of relationship errors. *Bioinformatics* 17:742–743. <https://doi.org/10.1093/bioinformatics/17.8.742>
- Abecasis GR, Cherny SS, Cookson WO, Cardon LR (2002) Merlin—rapid analysis of dense genetic maps using sparse gene flow trees. *Nat Genet* 30:97–101. <https://doi.org/10.1038/ng786>
- Adato A et al (2002) USH3A transcripts encode clarin-1, a four-transmembrane-domain protein with a possible role in sensory synapses. *Eur J Hum Genet* 10:339–350. <https://doi.org/10.1038/sj.ejhg.5200831>
- Adzhubei IA et al (2010) A method and server for predicting damaging missense mutations. *Nat Methods* 7:248–249
- Azaiez H et al (2018) Genomic landscape and mutational signatures of deafness-associated genes. *Am J Hum Genet* 103:484–497. <https://doi.org/10.1016/j.ajhg.2018.08.006>
- Booth KT et al (2018a) Exonic mutations and exon skipping: Lessons learned from DFNA5. *Hum Mutat* 39:433–440. <https://doi.org/10.1002/humu.23384>
- Booth KT, Kahrizi K, Najmabadi H, Azaiez H, Smith RJ (2018b) Old gene, new phenotype: splice-altering variants in CEACAM16 cause recessive non-syndromic hearing impairment. *J Med Genet* 55:555–560. <https://doi.org/10.1136/jmedgenet-2018-105349>
- Cartegni L, Wang J, Zhu Z, Zhang MQ, Krainer AR (2003) ESE-finder: a web resource to identify exonic splicing enhancers. *Nucleic Acids Res* 31:3568–3571
- Chun S, Fay JC (2009) Identification of deleterious mutations within three human genomes. *Genome Res* 19:1553–1561. <https://doi.org/10.1101/gr.092619.109>
- Creixell P, Schoof EM, Tan CS, Linding R (2012) Mutational properties of amino acid residues: implications for evolvability of phosphorylatable residues. *Philos Trans R Soc Lond B Biol Sci* 367:2584–2593. <https://doi.org/10.1098/rstb.2012.0076>
- Cunningham CL, Müller U (2019) Molecular structure of the hair cell mechano-electrical transduction complex. *Cold Spring Harb Perspect Med* 9:a033167
- Desmet FO, Hamroun D, Lalande M, Collod-Beroud G, Claustres M, Beroud C (2009) Human splicing finder: an online bioinformatics tool to predict splicing signals. *Nucleic Acids Res* 37:e67. <https://doi.org/10.1093/nar/gkp215>
- Doll J et al (2020) A novel missense variant in MYO3A is associated with autosomal dominant high-frequency hearing loss in a German family. *Mol Genet Genomic Med*. <https://doi.org/10.1002/mgg3.1343>
- Dulon D et al (2018) Clarin-1 gene transfer rescues auditory synaptopathy in model of Usher syndrome. *J Clin Invest* 128:3382–3401. <https://doi.org/10.1172/JCI94351>
- Dunbar LA et al (2019) Clarin-2 is essential for hearing by maintaining stereocilia integrity and function. *EMBO Mol Med* 11:e10288
- Fairbrother WG, Yeo GW, Yeh R, Goldstein P, Mawson M, Sharp PA, Burge CB (2004) RESCUE-ESE identifies candidate exonic splicing enhancers in vertebrate exons. *Nucleic Acids Res* 32:W187–190. <https://doi.org/10.1093/nar/gkh393>
- Fattahi Z et al (2019) Iranome: a catalogue of genomic variations in the Iranian population. *Hum Mutat*. <https://doi.org/10.1002/humu.23880>
- Fields RR et al (2002) Usher syndrome type III: revised genomic structure of the USH3 gene and identification of novel mutations. *Am J Hum Genet* 71:607–617. <https://doi.org/10.1086/342098>

- García-García G et al (2012) Two novel disease-causing mutations in the CLRN1 gene in patients with Usher syndrome type 3. *Mol Vis* 18:3070–3078
- Gillespie PG, Müller U (2009) Mechanotransduction by hair cells: models, molecules, and mechanisms. *Cell* 139:33–44. <https://doi.org/10.1016/j.cell.2009.09.010>
- Gopal SR et al (2015) Zebrafish models for the mechanosensory hair cell dysfunction in usher syndrome 3 reveal that clarin-1 is an essential hair bundle protein. *J Neurosci* 35:10188–10201. <https://doi.org/10.1523/Jneurosci.1096-15.2015>
- Gopal SR, Lee YT, Stepanyan R, McDermott BM Jr, Alagramam KN (2019) Unconventional secretory pathway activation restores hair cell mechanotransduction in an USH3A model. *Proc Natl Acad Sci U S A* 116:11000–11009. <https://doi.org/10.1073/pnas.1817500116>
- Graveley BR (2000) Sorting out the complexity of SR protein functions. *RNA* 6:1197–1211
- Hofrichter MAH et al (2018) The conserved pArg108 residue in S1PR2 (DFNB68) is fundamental for proper hearing: evidence from a consanguineous Iranian family. *BMC Med Genet* 19:81. <https://doi.org/10.1186/s12881-018-0598-5>
- Hudspeth AJ (1997) How hearing happens. *Neuron* 19:947–950
- Ingham NJ et al (2019) Mouse screen reveals multiple new genes underlying mouse and human hearing loss. *PLoS Biol* 17:e3000194. <https://doi.org/10.1371/journal.pbio.3000194>
- Joensuu T et al (2001) Mutations in a novel gene with transmembrane domains underlie Usher syndrome type 3. *Am J Hum Genet* 69:673–684. <https://doi.org/10.1086/323610>
- Kan JLC, Green MR (1999) Pre-mRNA splicing of IgM exons M1 and M2 is directed by a juxtaposed splicing enhancer and inhibitor. *Gene Dev* 13:462–471
- Kazmierczak P, Sakaguchi H, Tokita J, Wilson-Kubalek EM, Milligan RA, Muller U, Kachar B (2007) Cadherin 23 and protocadherin 15 interact to form tip-link filaments in sensory hair cells. *Nature* 449:87–91. <https://doi.org/10.1038/nature06091>
- Khan MI et al (2011) CLRN1 mutations cause nonsyndromic retinitis pigmentosa. *Ophthalmology* 118:1444–1448. <https://doi.org/10.1016/j.ophtha.2010.10.047>
- Kimmel CB, Ballard WW, Kimmel SR, Ullmann B, Schilling TF (1995) Stages of embryonic development of the zebrafish. *Dev Dyn* 203:253–310. <https://doi.org/10.1002/aja.1002030302>
- Kincaid MM, Cooper AA (2007) Misfolded proteins traffic from the endoplasmic reticulum (ER) due to ER export signals. *Mol Biol Cell* 18:455–463. <https://doi.org/10.1091/mbc.E06-08-0696>
- Kinseth MA, Anjard C, Fuller D, Guizzunti G, Loomis WF, Malhotra V (2007) The golgi-associated protein GRASP is required for unconventional protein secretion during development. *Cell* 130:524–534. <https://doi.org/10.1016/j.cell.2007.06.029>
- Kircher M, Witten DM, Jain P, O’Roak BJ, Cooper GM, Shendure J (2014) A general framework for estimating the relative pathogenicity of human genetic variants. *Nat Genet* 46:310–315. <https://doi.org/10.1038/ng.2892>
- Kolla L et al (2020) Characterization of the development of the mouse cochlear epithelium at the single cell level. *Nat Commun*. <https://doi.org/10.1038/s41467-020-16113-y>
- Kopecky B, Johnson S, Schmitz H, Santi P, Fritzsche B (2012) Scanning thin-sheet laser imaging microscopy elucidates details on mouse ear development. *Dev Dyn* 241:465–480. <https://doi.org/10.1002/dvdy.23736>
- LaFave MC, Varshney GK, Vemulapalli M, Mullikin JC, Burgess SM (2014) A defined zebrafish line for high-throughput genetics and genomics: NHGRI-1. *Genetics* 198:167–170. <https://doi.org/10.1534/genetics.114.166769>
- Lek M et al (2016) Analysis of protein-coding genetic variation in 60,706 humans. *Nature* 536:285–291. <https://doi.org/10.1038/nature19057>
- Lekszas C et al (2020) Biallelic TANGO1 mutations cause a novel syndromal disease due to hampered cellular collagen secretion. *Elife* 9:e51319
- Livak KJ, Schmittgen TD (2001) Analysis of relative gene expression data using real-time quantitative PCR and the 2(T)(-Delta Delta C) method. *Methods* 25:402–408. <https://doi.org/10.1006/meth.2001.1262>
- Mazzoli M, Van Camp G, Newton V, Giarbini N, Declau F, Parving A (2003) Recommendations for the description of genetic and audiological data for families with nonsyndromic hereditary hearing impairment. *Audiol Med* 1:148–150
- Morton CC, Nance WE (2006) Newborn hearing screening—a silent revolution. *N Engl J Med* 354:2151–2164. <https://doi.org/10.1056/NEJMra050700>
- Ness SL et al (2003) Genetic homogeneity and phenotypic variability among Ashkenazi Jews with Usher syndrome type III. *J Med Genet* 40:767–772
- Ng PC, Henikoff S (2001) Predicting deleterious amino acid substitutions. *Genome Res* 11:863–874. <https://doi.org/10.1101/gr.176601>
- O’Connell JR, Weeks DE (1998) PedCheck: a program for identification of genotype incompatibilities in linkage analysis. *Am J Hum Genet* 63:259–266. <https://doi.org/10.1086/301904>
- Oza AM et al (2018) Expert specification of the ACMG/AMP variant interpretation guidelines for genetic hearing loss. *Hum Mutat* 39:1593–1613. <https://doi.org/10.1002/humu.23630>
- Pearlman SM, Serber Z, Ferrell JE Jr (2011) A mechanism for the evolution of phosphorylation sites. *Cell* 147:934–946. <https://doi.org/10.1016/j.cell.2011.08.052>
- Phillips JB et al (2011) Harmonin (Ush1c) is required in zebrafish Müller glial cells for photoreceptor synaptic development and function. *Dis Model Mech* 4:786–800
- Plantinga RF, Kleemola L, Huygen PL, Joensuu T, Sankila EM, Pennings RJ, Cremers CW (2005) Serial audiometry and speech recognition findings in Finnish Usher syndrome type III patients. *Audiol Neurootol* 10:79–89. <https://doi.org/10.1159/000083363>
- Rüschendorf F, Nürnberg P (2005) ALOHOMORA: a tool for linkage analysis using 10K SNP array data. *Bioinformatics* 21:2123–2125. <https://doi.org/10.1093/bioinformatics/bti264>
- Sano R, Reed JC (2013) ER stress-induced cell death mechanisms. *Biochim Biophys Acta* 1833:3460–3470. <https://doi.org/10.1016/j.bbamer.2013.06.028>
- Schröder M, Kaufman RJ (2005) The mammalian unfolded protein response. *Annu Rev Biochem* 74:739–789. <https://doi.org/10.1146/annurev.biochem.73.011303.074134>
- Schwarz JM, Cooper DN, Schuelke M, Seelow D (2014) Mutation-Taster2: mutation prediction for the deep-sequencing age. *Nat Methods* 11:361–362. <https://doi.org/10.1038/nmeth.2890>
- Scott EM et al (2016) Characterization of Greater Middle Eastern genetic variation for enhanced disease gene discovery. *Nat Genet* 48:1071–1076. <https://doi.org/10.1038/ng.3592>
- Seelow D, Schuelke M, Hildebrandt F, Nürnberg P (2009) HomozygosityMapper—an interactive approach to homozygosity mapping. *Nucleic Acids Res* 37:W593–W599. <https://doi.org/10.1093/nar/gkp369>
- Seiler C, Finger-Baier KC, Rinner O, Makhankov YV, Schwarz H, Neuhauss SC, Nicolson T (2005) Duplicated genes with split functions: independent roles of protocadherin15 orthologues in zebrafish hearing and vision. *Development* 132:615–623. <https://doi.org/10.1242/dev.01591>
- Simon MM et al (2013) A comparative phenotypic and genomic analysis of C57BL/6J and C57BL/6N mouse strains. *Genome Biol* 14:R82. <https://doi.org/10.1186/gb-2013-14-7-r82>
- Smith RJ, Bale JF Jr, White KR (2005) Sensorineural hearing loss in children. *Lancet* 365:879–890. [https://doi.org/10.1016/S0140-6736\(05\)71047-3](https://doi.org/10.1016/S0140-6736(05)71047-3)

- Thisse C, Thisse B (2008) High-resolution in situ hybridization to whole-mount zebrafish embryos. *Nat Protoc* 3:59–69. <https://doi.org/10.1038/nprot.2007.514>
- UniProt Consortium T (2018) UniProt: the universal protein knowledgebase. *Nucleic Acids Res* 46:2699. <https://doi.org/10.1093/nar/gky092>
- Varshney GK et al (2016) A high-throughput functional genomics workflow based on CRISPR/Cas9-mediated targeted mutagenesis in zebrafish. *Nat Protoc* 11:2357–2375. <https://doi.org/10.1038/nprot.2016.141>
- Viotti C (2016) ER to golgi-dependent protein secretion: the conventional pathway. *Methods Mol Biol* 1459:3–29. https://doi.org/10.1007/978-1-4939-3804-9_1
- Waterhouse AM, Procter JB, Martin DM, Clamp M, Barton GJ (2009) Jalview Version 2—a multiple sequence alignment editor and analysis workbench. *Bioinformatics* 25:1189–1191. <https://doi.org/10.1093/bioinformatics/btp033>
- Westerfield M (2000) *The zebrafish book. A guide for the laboratory use of zebrafish (Danio rerio)*. 4th edn. University of Oregon Press, Eugene, Oregon, USA
- Whitfield TT, Riley BB, Chiang MY, Phillips B (2002) Development of the zebrafish inner ear. *Dev Dyn* 223:427–458
- Wright CF, FitzPatrick DR, Firth HV (2018) Paediatric genomics: diagnosing rare disease in children. *Nat Rev Genet* 19:253–268
- Xiong HY et al (2015) RNA splicing. The human splicing code reveals new insights into the genetic determinants of disease. *Science* 347:125806
- Yang J, Yan R, Roy A, Xu D, Poisson J, Zhang Y (2015) The I-TASSER Suite: protein structure and function prediction. *Nat Methods* 12:7–8. <https://doi.org/10.1038/nmeth.3213>

Publisher's Note Springer Nature remains neutral with regard to jurisdictional claims in published maps and institutional affiliations.

Authors and Affiliations

Barbara Vona^{1,2} · Neda Mazaheri³ · Sheng-Jia Lin⁴ · Lucy A. Dunbar⁵ · Reza Maroofian⁶ · Hela Azaiez⁷ · Kevin T. Booth^{7,8} · Sandrine Vitry⁹ · Aboufazi Rad² · Franz Rüschemdorf¹⁰ · Pratihtha Varshney⁴ · Ben Fowler¹¹ · Christian Beetz¹² · Kumar N. Alagramam^{13,14,15} · David Murphy⁶ · Gholamreza Shariati^{16,17} · Alireza Sedaghat¹⁸ · Henry Houlden⁶ · Cassidy Petree⁴ · Shruthi VijayKumar⁴ · Richard J. H. Smith⁷ · Thomas Haaf¹ · Aziz El-Amraoui⁹ · Michael R. Bowl^{5,19} · Gaurav K. Varshney⁴ · Hamid Galehdari³

¹ Institute of Human Genetics, Julius Maximilians University Würzburg, Würzburg, Germany

² Department of Otolaryngology—Head and Neck Surgery, Tübingen Hearing Research Centre, Eberhard Karls University Tübingen, Tübingen, Germany

³ Department of Genetics, Faculty of Science, Shahid Chamran University of Ahvaz, Ahvaz, Iran

⁴ Genes & Human Disease Research Program, Oklahoma Medical Research Foundation, Oklahoma City, OK, USA

⁵ Mammalian Genetics Unit, MRC Harwell Institute, Harwell Campus, Didcot OX11 0RD, UK

⁶ Department of Neuromuscular Disorders, UCL Queen Square Institute of Neurology, London WC1N 3BG, UK

⁷ Molecular Otolaryngology and Renal Research Laboratories, Department of Otolaryngology and Interdisciplinary Graduate Program in Molecular Medicine, Carver College of Medicine, University of Iowa, Iowa City, IA, USA

⁸ Department of Neurobiology, Harvard Medical School, Boston, MA, USA

⁹ Unit Progressive Sensory Disorders, Pathophysiology and Therapy Institut Pasteur, Institut de L'Audition, INSERM-UMRS1120, Sorbonne Université, 63 rue de Charenton, 75012 Paris, France

¹⁰ Max Delbrück Center for Molecular Medicine in the Helmholtz Association, 13125 Berlin, Germany

¹¹ Imaging & Histology Core, Oklahoma Medical Research Foundation, Oklahoma City, OK, USA

¹² Centogene AG, Rostock, Germany

¹³ Department of Otolaryngology, School of Medicine, University Hospitals Cleveland Medical Center, Case Western Reserve University, 11100 Euclid Avenue, Cleveland, OH 44106, USA

¹⁴ Department of Neurosciences, Case Western Reserve University, 11100 Euclid Avenue, Cleveland, OH 44106, USA

¹⁵ Department of Genetics and Genomic Sciences, Case Western Reserve University, Cleveland, OH 44106, USA

¹⁶ Department of Medical Genetics, Faculty of Medicine, Ahvaz Jundishapur, University of Medical Sciences, Ahvaz, Iran

¹⁷ Narges Medical Genetics and Prenatal Diagnostics Laboratory, East Mihan Ave, Kianpars, Ahvaz, Iran

¹⁸ Diabetes Research Center, Health Research Institute, Ahvaz Jundishapur University of Medical Sciences, Ahvaz, Iran

¹⁹ UCL Ear Institute, University College London, 332 Gray's Inn Road, London WC1X 8EE, UK