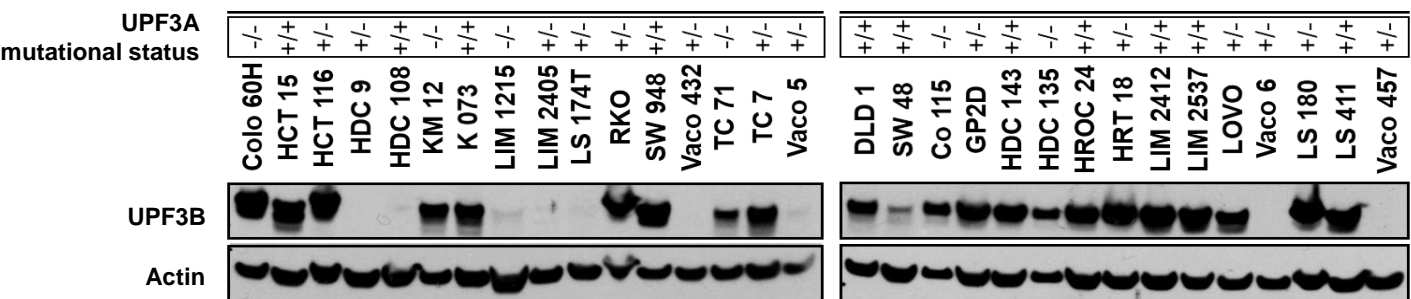


## Suppl. Figure S1



**Suppl. Figure S1. Expression of UPF3B in colorectal cancer cell lines.** Western Blot analysis of UPF3B protein expression in colorectal cancer cell lines in regard to mutational status of UPF3A alleles. SW948 cells (MSS) served as *UPF3A*<sup>+/+</sup> control while  $\beta$ -actin was used as loading control.