

Supplementary Material

Chronic Overexpression of Bradykinin in Kidney Causes Polyuria and Cardiac Hypertrophy

*Carlos C Barros¹; Ines Schadock^{2,3}; Gabin Sih³; Franziska Rother³; Ping Xu³; Elena Popova³; Irina Lapidus³; Ralph Plehm³; Arnd Heuser³; Mihail Todiras³; Sebastian Bachmann⁵; Natalia Alenina^{3,6}; Ronaldo C Araujo²; Joao B Pesquero²; Michael Bader^{3,5-9}.

* Correspondence: Carlos C Barros: barrosccpel@gmail.com

1 Supplementary Figures and Tables

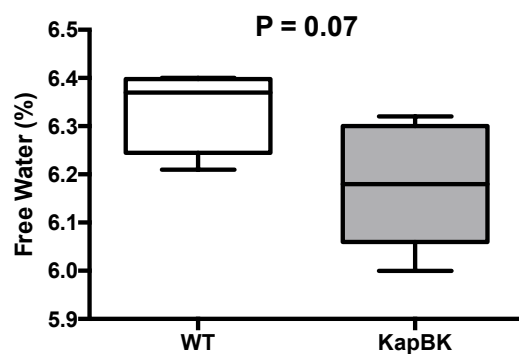


Figure S1: Free water analysis. Data obtained by body composition analysis and presented as mean \pm SEM, n = 6.

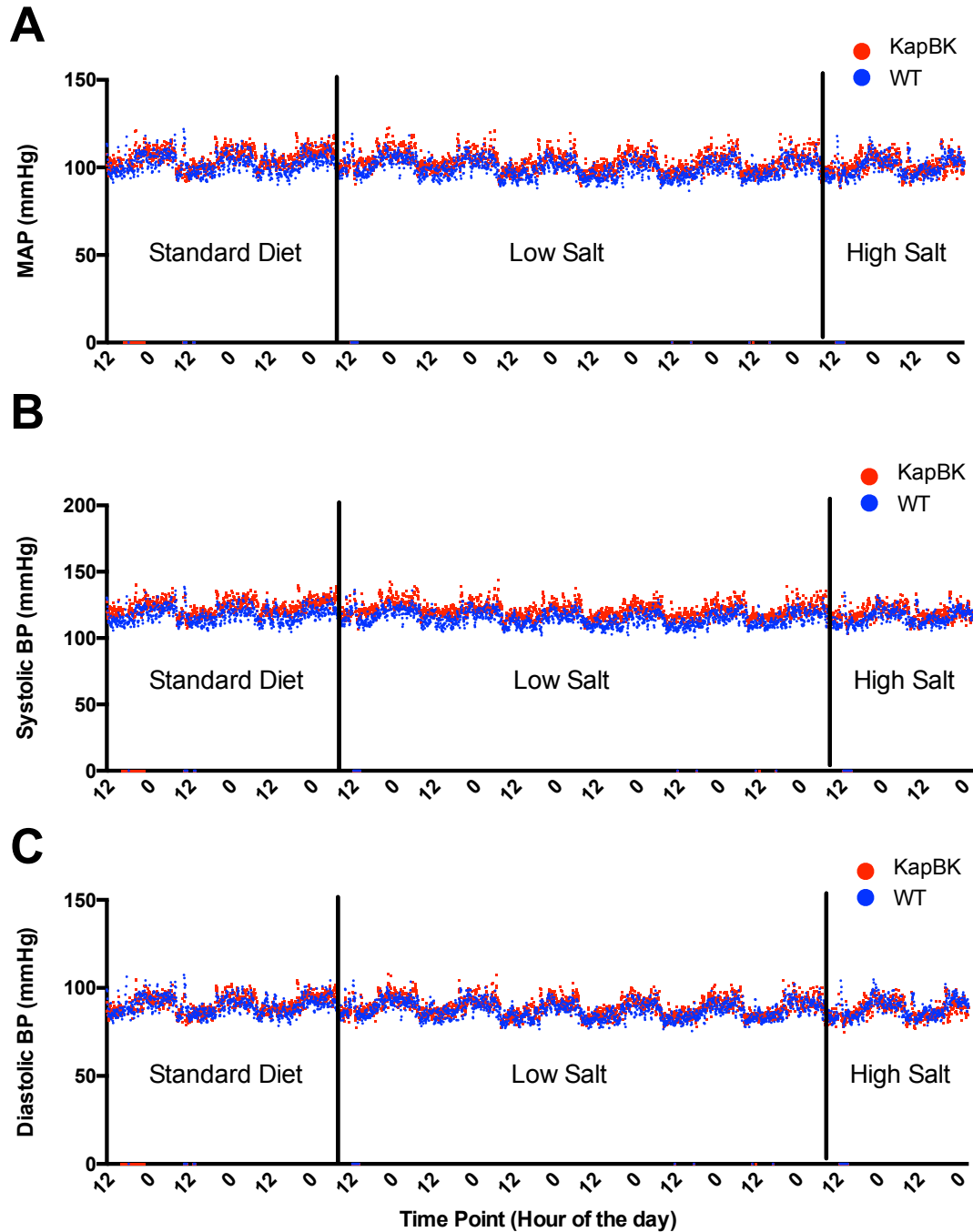


Figure S2: Circadian blood pressure rhythm recorded by telemetry. A) Mean Arterial Pressure (MAP); B) Systolic Blood Pressure; C) Diastolic Blood Pressure. The graphics show the last days of each 10 days periods after surgery or introduction of new diet. The vertical bars separate data from rats fed with different diets and represent time break points. Each dot represent the mean of the group recorded at each 5 minutes. n=6.

Table S1: Blood cell counts of KapBK rats and controls (n=2)

| Blood cell counts | WT | BK | t-test |
|---------------------------------------------------------|----------------------|---------------------|--------|
| WBC - white blood cell count (K/ μ L) | 16.37 \pm 1.124 | 15.35 \pm 0.087 | 0.312 |
| RBC - red blood cell count (M/ μ L) | 7.11 \pm 0.221 | 6.98 \pm 0.026 | 0.463 |
| HGB - hemoglobin (g/dL) | 17.97 \pm 0.551 | 16.35 \pm 0.087 | 0.079 |
| HcT - hematocrit (%) | 39.03 \pm 1.589 | 36.85 \pm 0.087 | 0.163 |
| MCV - mean corpuscular volume (fL) | 55.00 \pm 1.000 | 53.00 \pm 2.870 | 0.075 |
| MCH - mean corpuscular hemoglobin (pg) | 25.23 \pm 0.115 | 23.45 \pm 0.260 | 0.107 |
| MCHC - mean corpuscular hemoglobin concentration (g/dL) | 46.07 \pm 0.808 | 44.40 \pm 0.520 | 0.081 |
| RDW - red cell distribution width (%) | 11.47 \pm 0.058 | 11.05 \pm 0.087 | 0.053 |
| Plt - platelet count (K/ μ L) | 598.00 \pm 190.139 | 626.50 \pm 99.593 | 0.860 |
| MPV - mean platelet volume (fL) | 5.20 \pm 0.173 | 5.25 \pm 0.087 | 0.735 |
| %Lym - lymphocytes (%) | 72.03 \pm 1.429 | 66.90 \pm 2.078 | 0.065 |
| %Mo - monocytes (%) | 4.20 \pm 0.173 | 5.90 \pm 0.866 | 0.070 |
| %GRA - granulocytes (%) | 23.77 \pm 1.429 | 27.20 \pm 1.212 | 0.063 |
| LYM - lymphocytes (K/ μ L) | 11.73 \pm 0.702 | 10.15 \pm 0.260 | 0.060 |
| MON - monocytes (K/ μ L) | 0.63 \pm 0.058 | 0.85 \pm 0.087 | 0.072 |
| GRA - granulocytes (K/ μ L) | 4.00 \pm 0.436 | 4.35 \pm 0.260 | 0.383 |