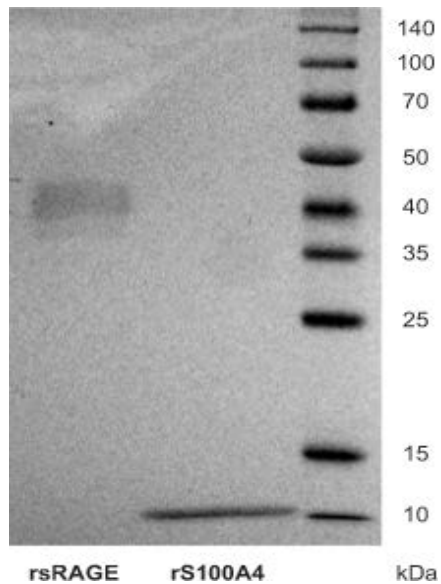


**RAGE mediates S100A4-induced cell motility via MAPK/ERK and hypoxia signaling and is a prognostic biomarker for human colorectal cancer metastasis**

**Supplementary Material**



**Supplementary figure:** SDS-PAGE and Coomassie staining of purified rsRAGE (3  $\mu$ g; lane 1) and rS100A4 (5  $\mu$ g; lane 2).