
Supplementary information

Natural proteome diversity links aneuploidy tolerance to protein turnover

In the format provided by the
authors and unedited

Supplementary Information Guide

List of SI Tables (provided separately)

SI Table 1: Strain annotations of natural isolates.

SI Table 2: Growth of natural isolates during cultivation for proteomics.

SI Table 3: Proteomes of 796 yeast isolates (non-imputed).

SI Table 4: Proteomes of disomic strains (non-imputed).

SI Table 5: List of strains showing a discrepancy between aneuploidy annotation as shown in SI Table 1 and the median gene copy number per chromosome as published in 10.1038/s41586-018-0030-5.

SI Table 6: List of strains showing a discrepancy between their median normalized chromosomal log2 mRNA ratios and the predicted median based on the aneuploidy annotation.

SI Table 7: Strains included in the integrated dataset.

SI Table 8: Gene-by-gene linear regression analysis of mRNA and protein attenuation in natural aneuploid isolates.

SI Table 9: Gene-by-gene linear regression analysis of mRNA and protein attenuation in lab-engineered synthetic disomic strains.

SI Table 10: Median mRNA or protein level attenuation of genes associated with KEGG cellular pathway terms, as well as GO biological process, GO molecular function, or GO cellular compartment terms.

SI Table 11: Quantification of dosage compensation across isolates.

SI Table 12: Strain-by-strain quantification of dosage compensation.

SI Table 13: Proteomes of two natural isolates (AMC, BBV) across different growth stages.

SI Table 14: Trans expression of genes in aneuploid natural isolates.

SI Table 15: Ubiquitinomics data of euploid and aneuploid natural isolates.

SI Table 16: Doubling times of natural isolates as measured during turnover experiments.

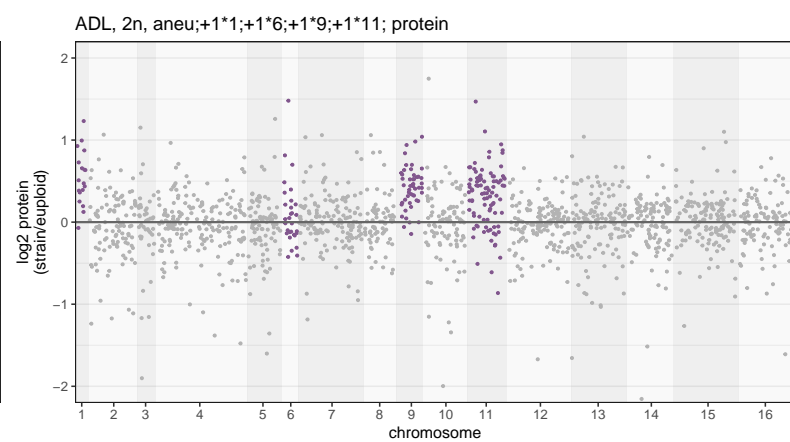
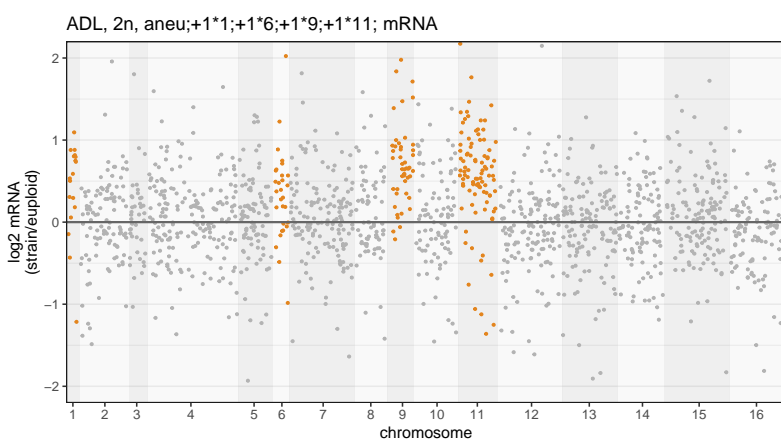
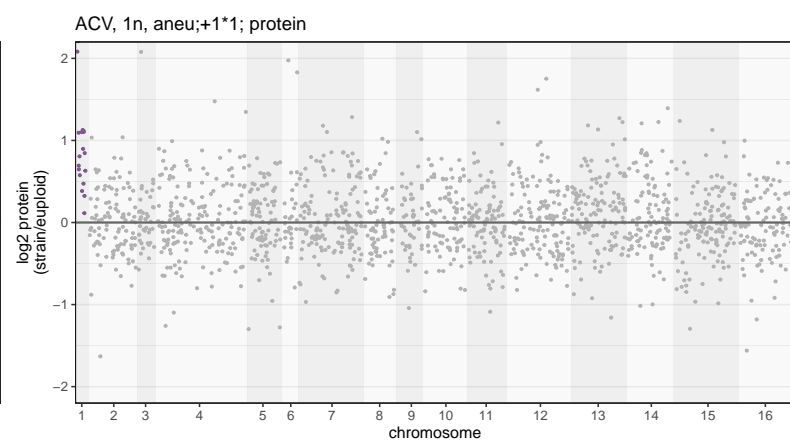
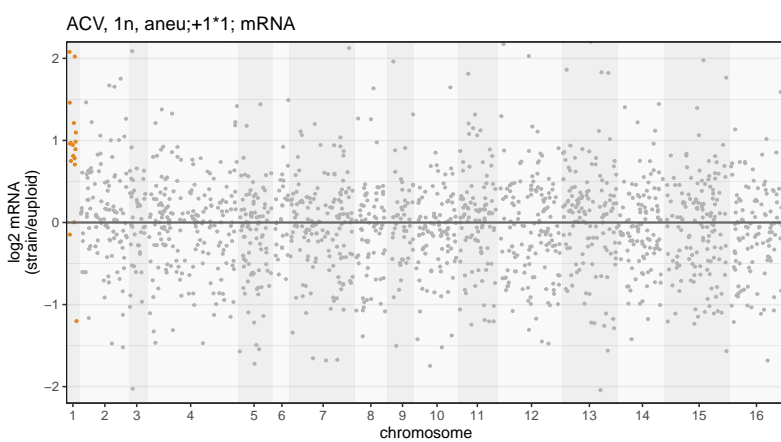
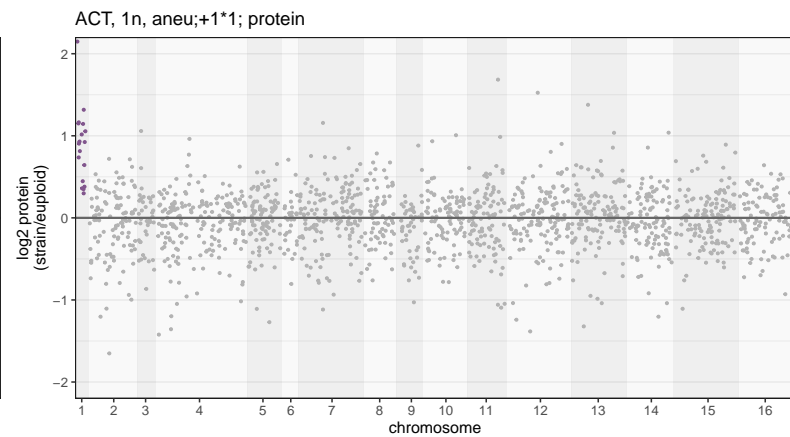
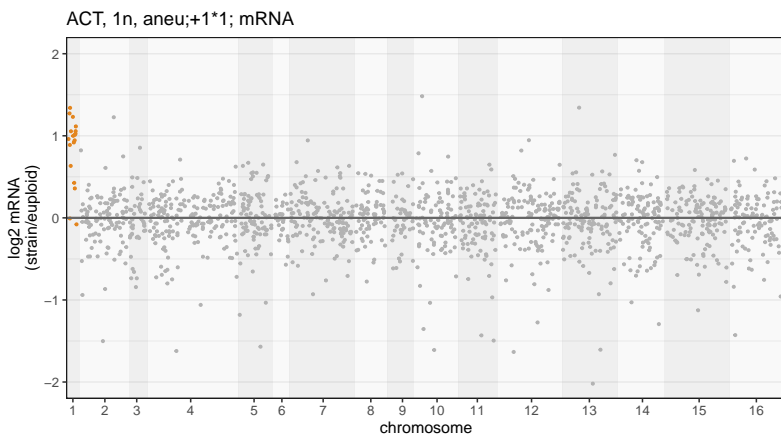
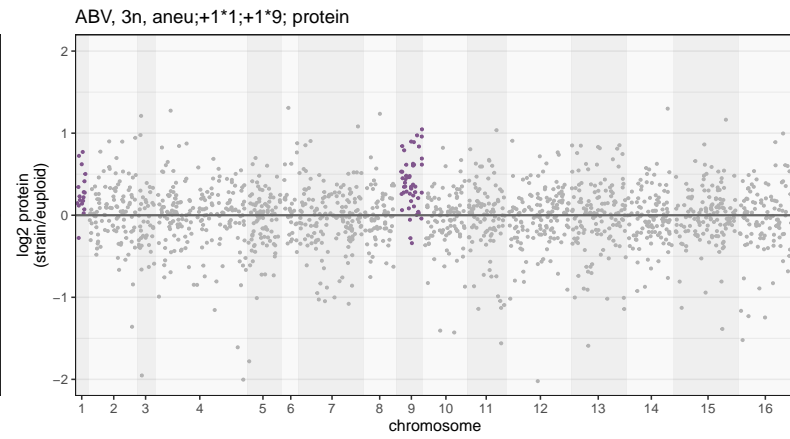
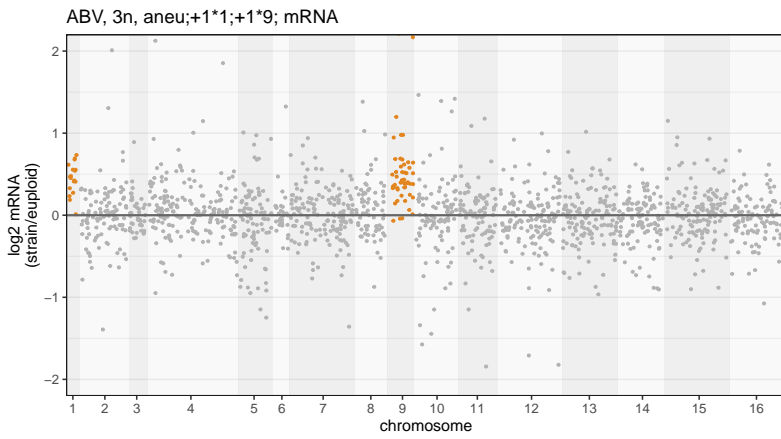
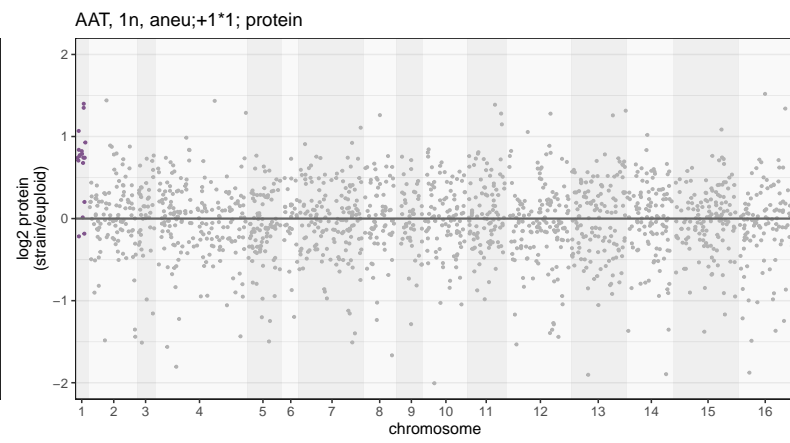
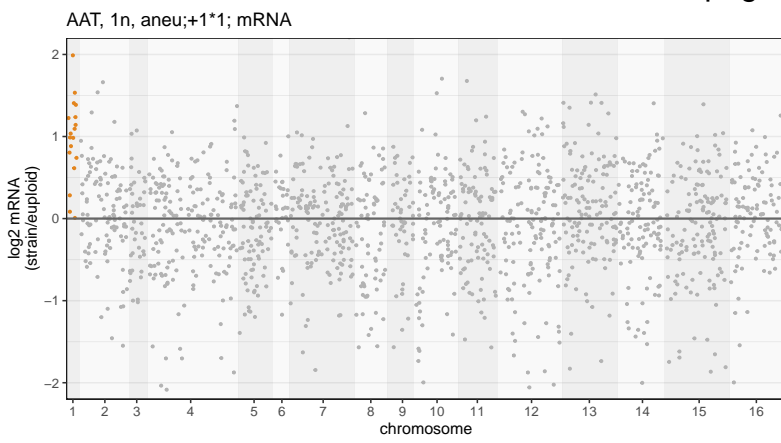
SI Table 17: Protein turnover data for 55 natural euploid and aneuploid isolates.

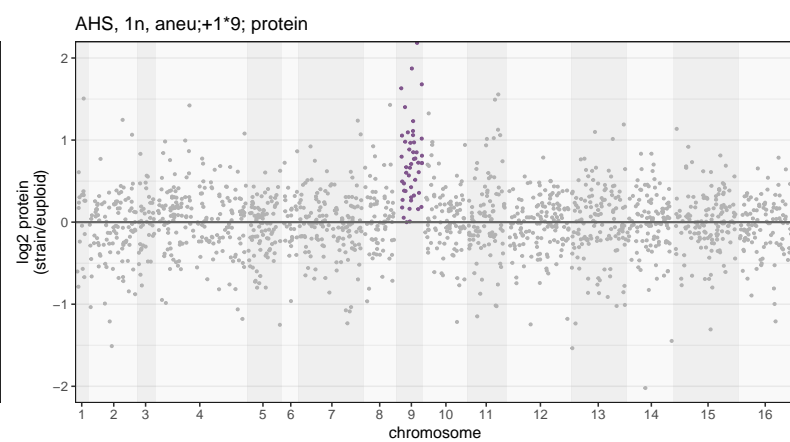
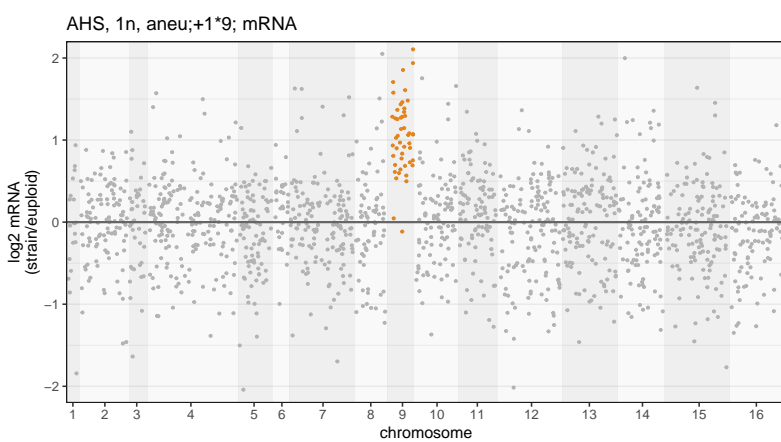
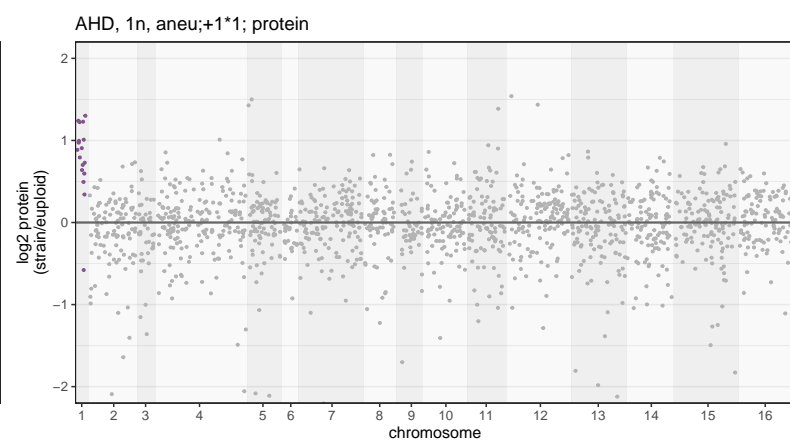
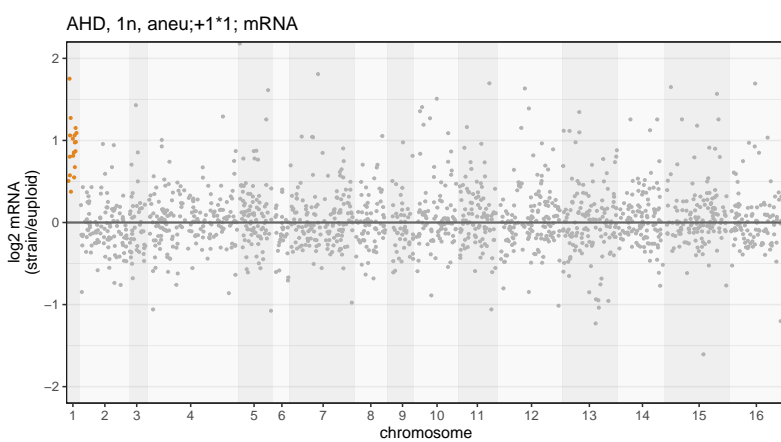
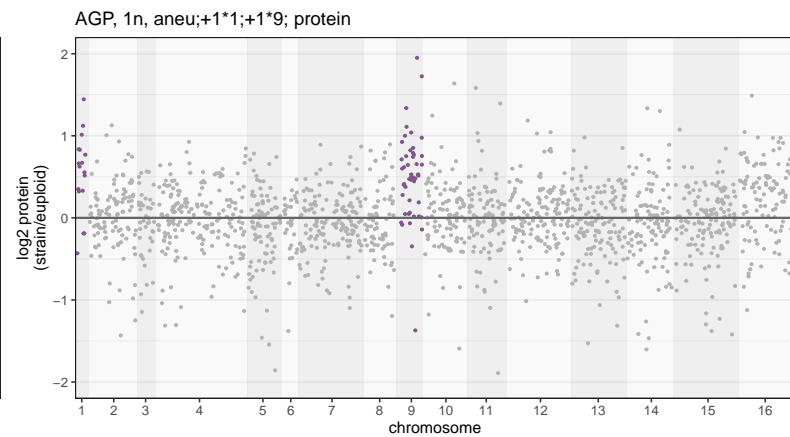
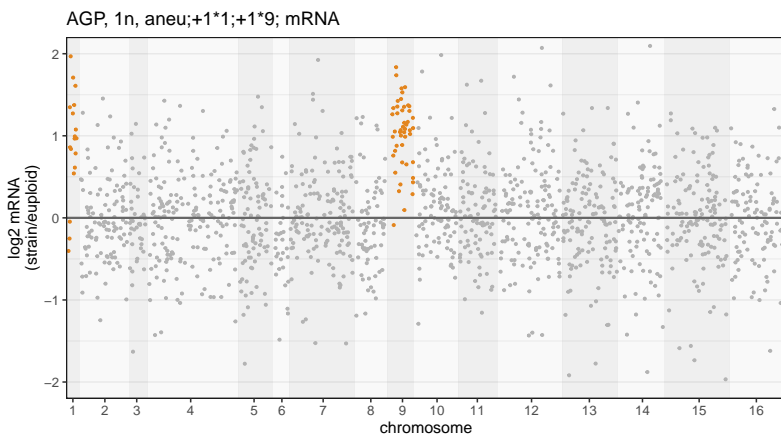
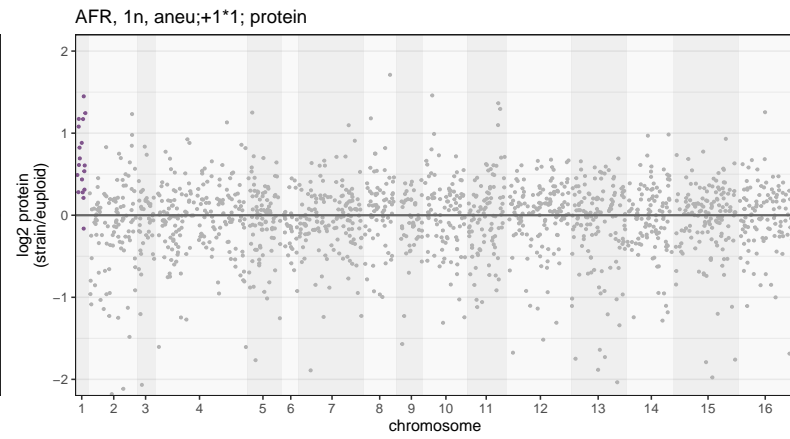
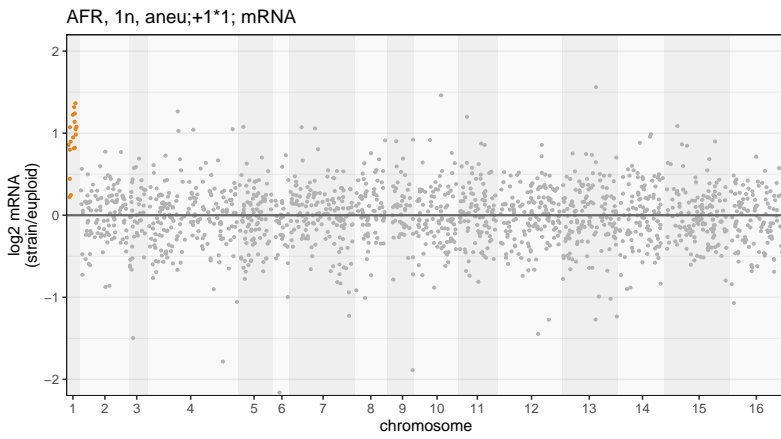
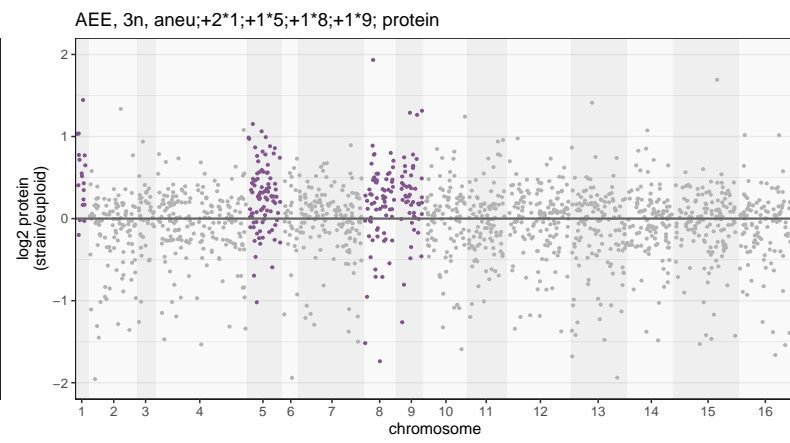
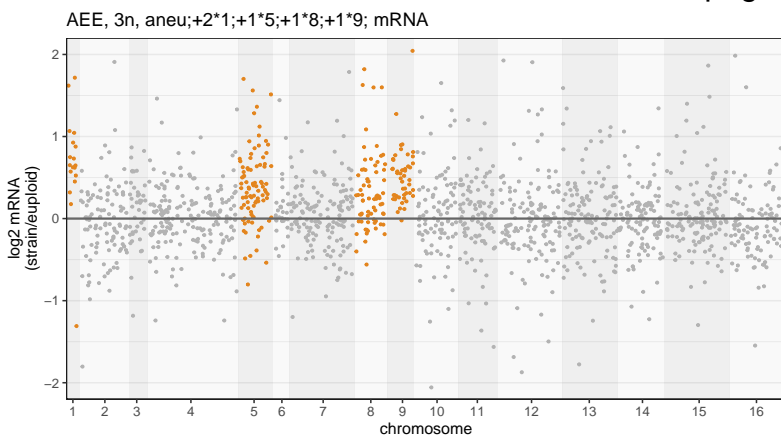
SI Table 18: Overview of the 1,046 samples included in the RNA-sequencing survey.

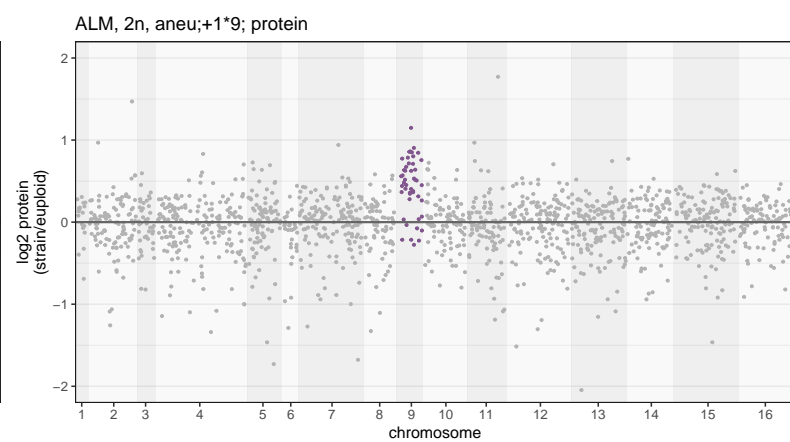
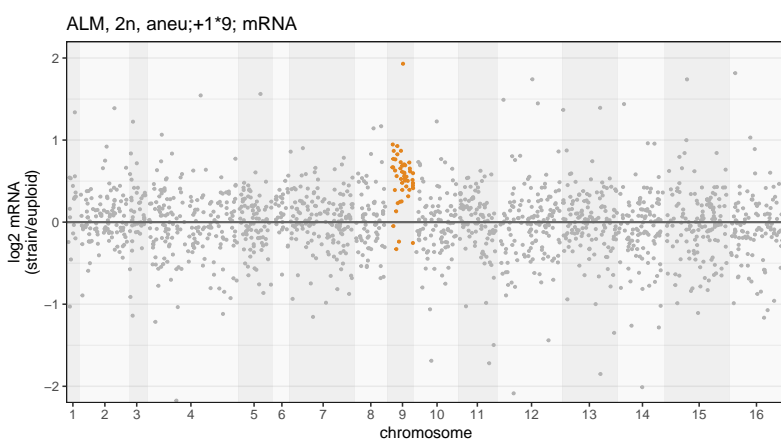
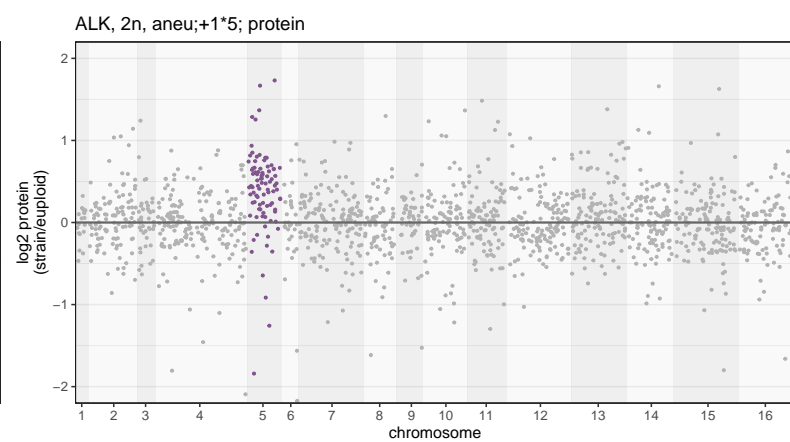
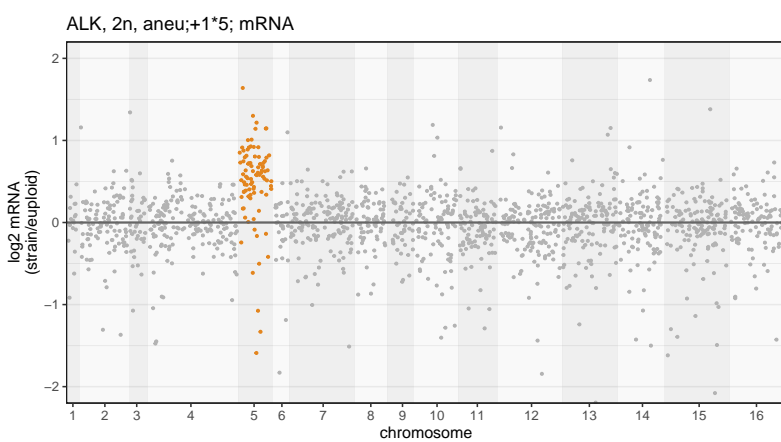
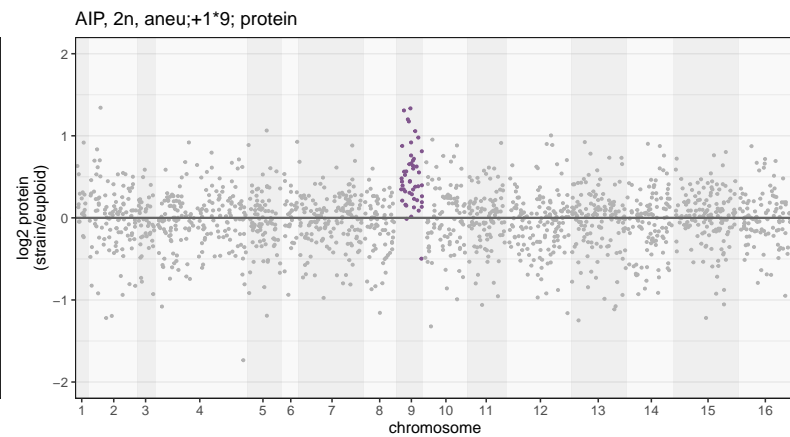
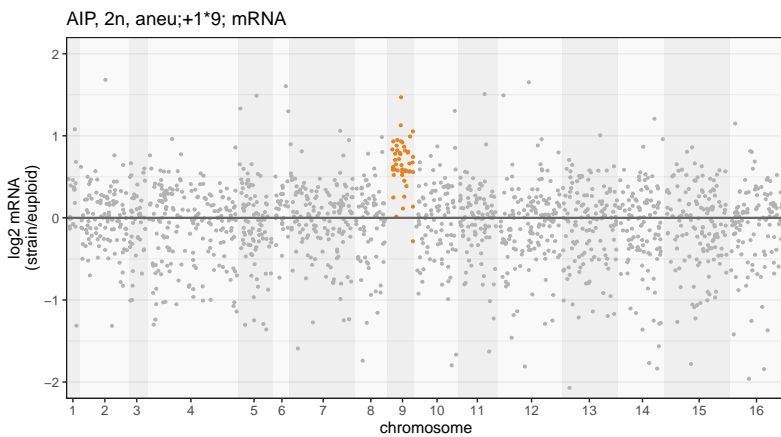
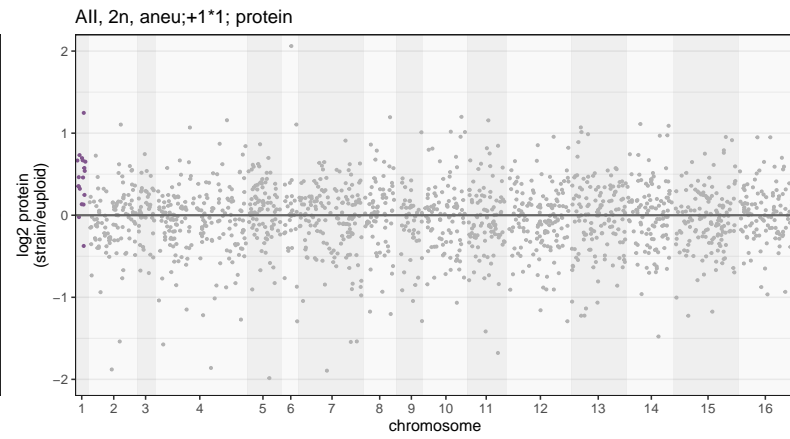
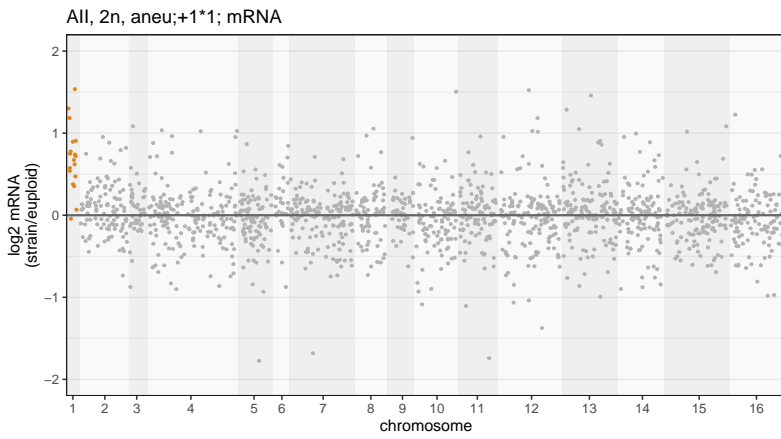
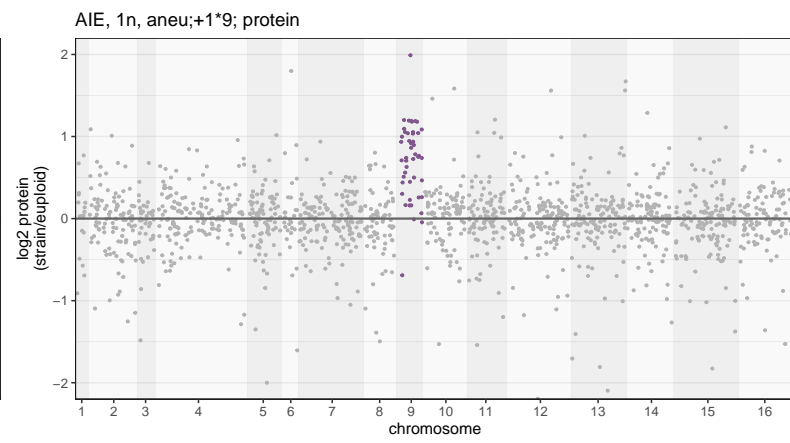
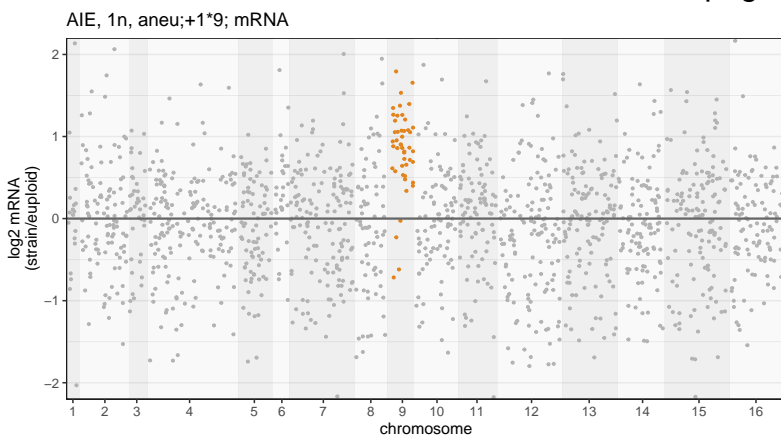
SI Table 19: Non-linear gradient ramp on nanoAcquity UPLC.

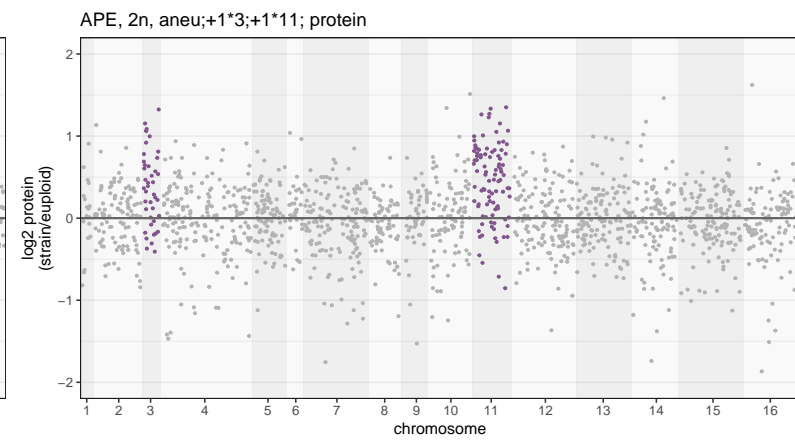
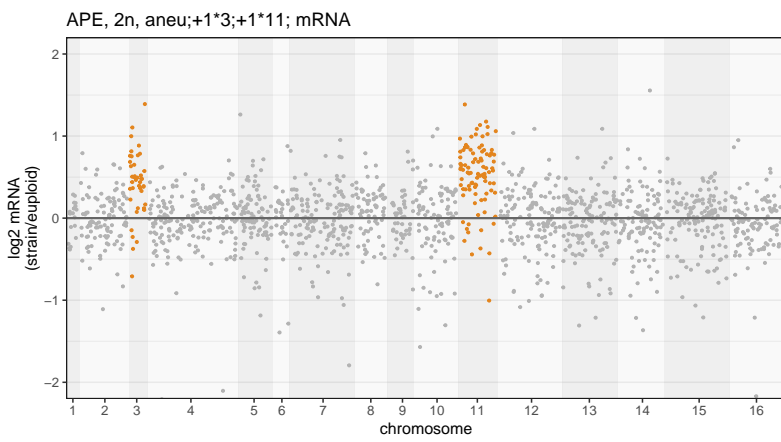
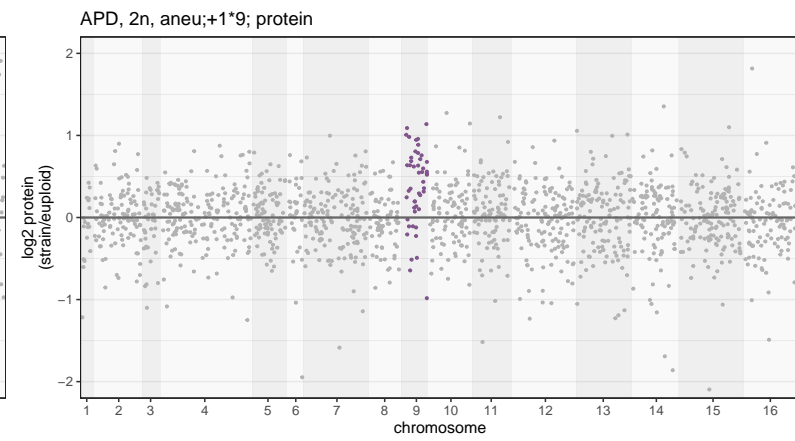
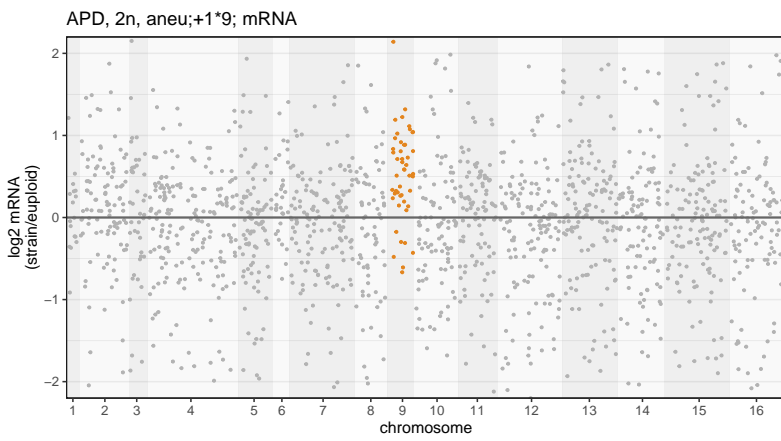
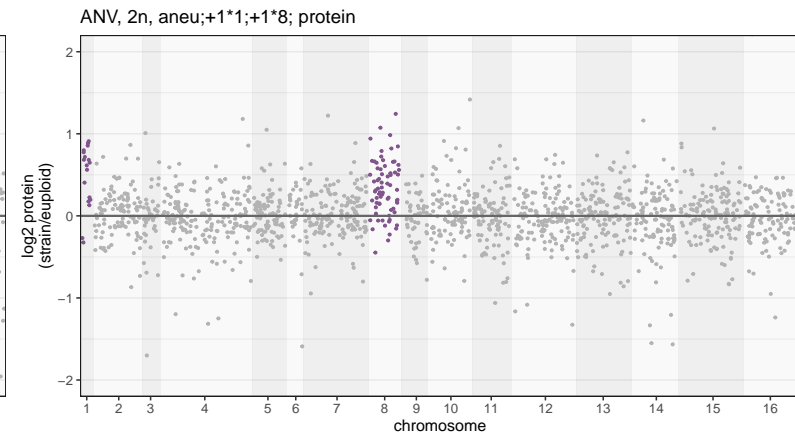
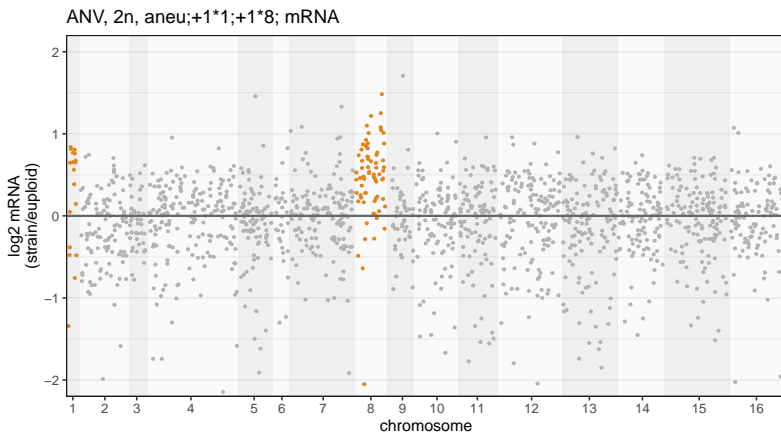
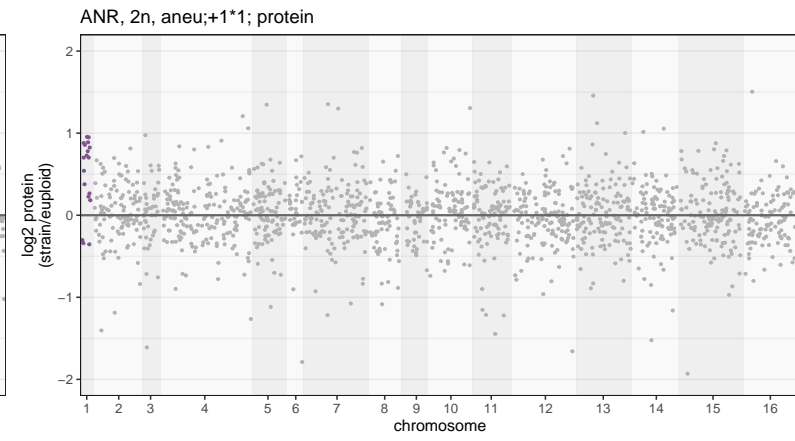
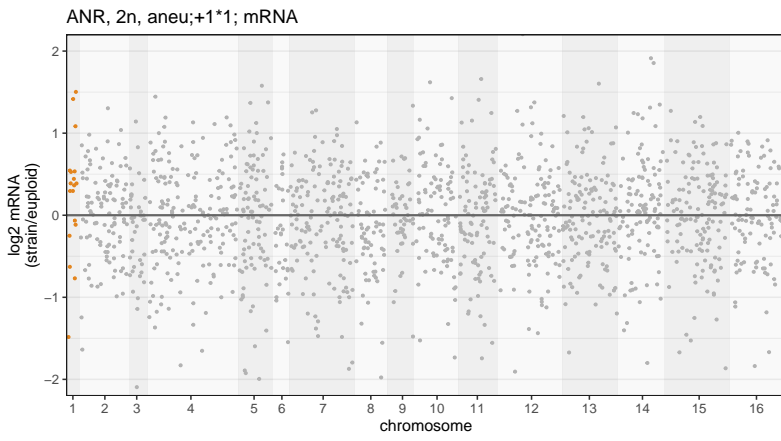
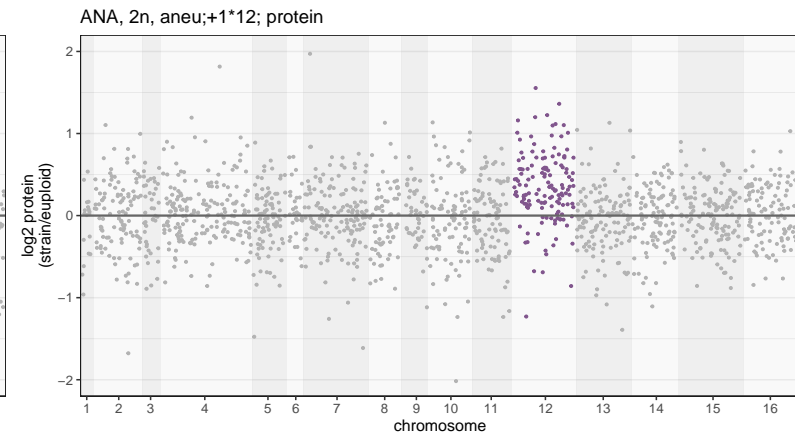
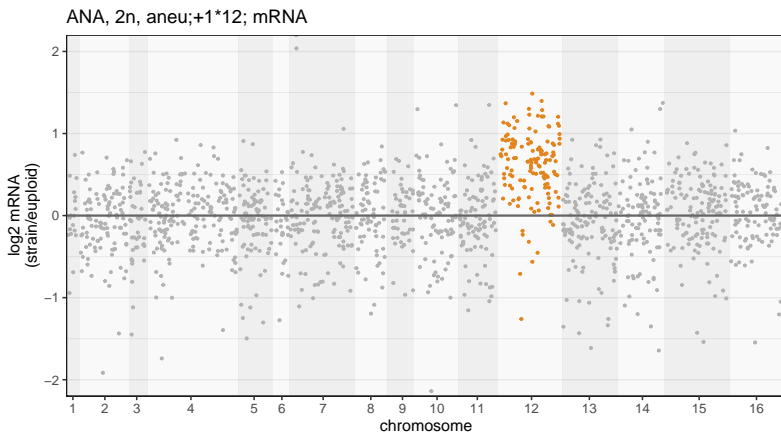
SI Table 20: Lower and upper m/z limits of the SWATH windows.

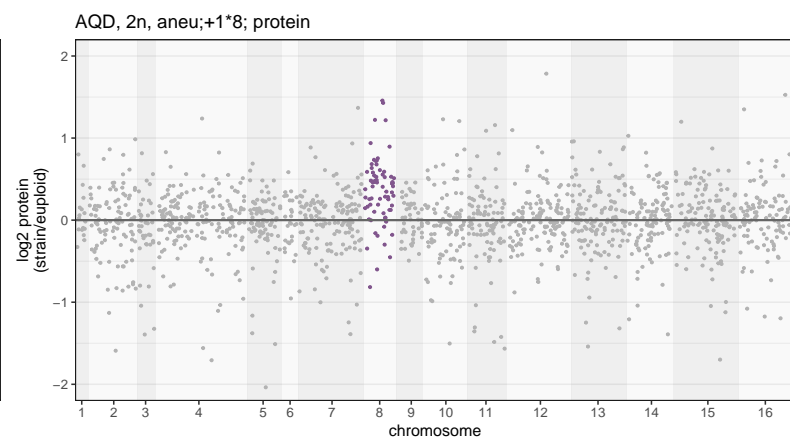
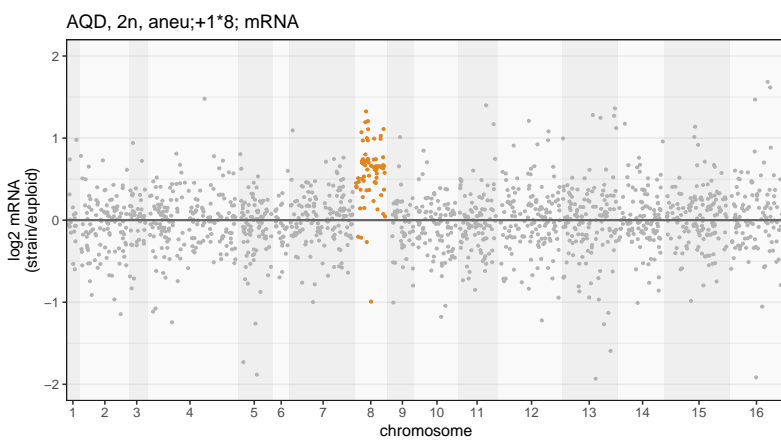
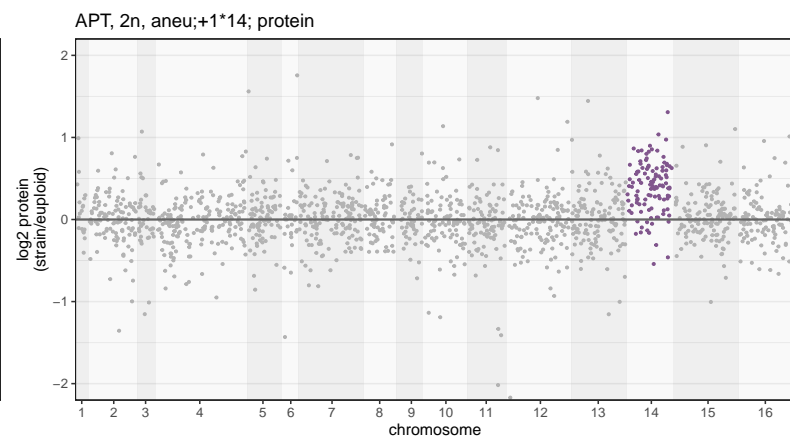
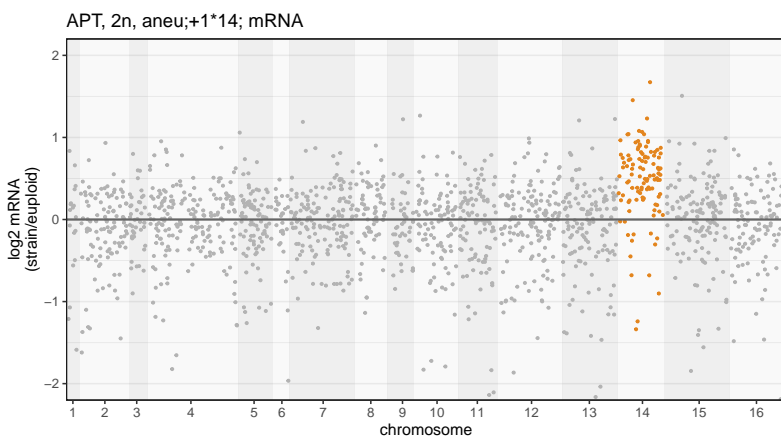
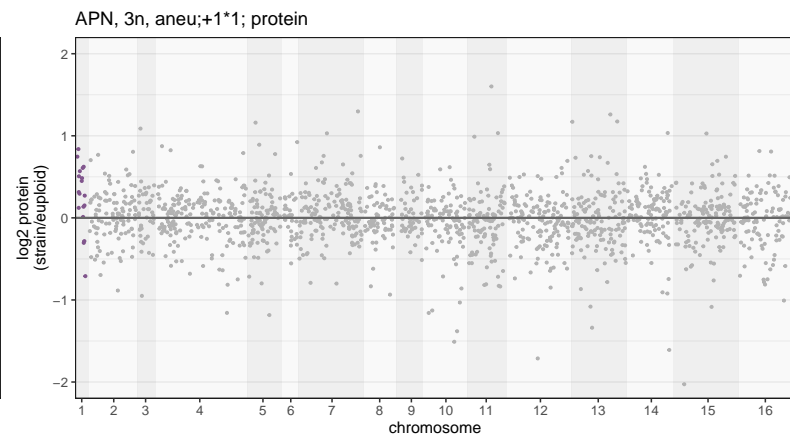
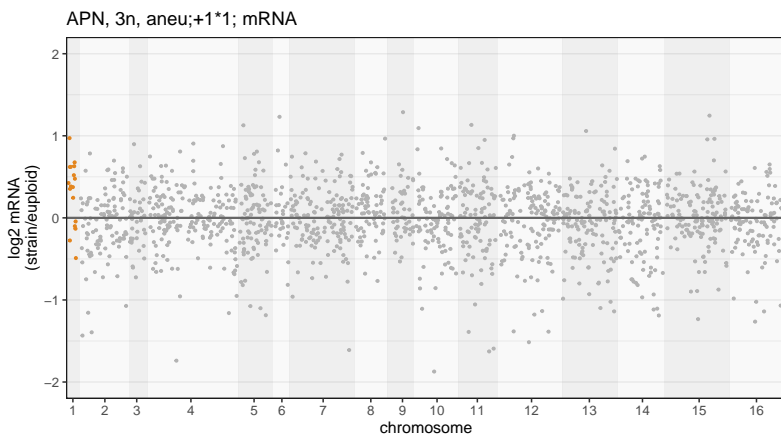
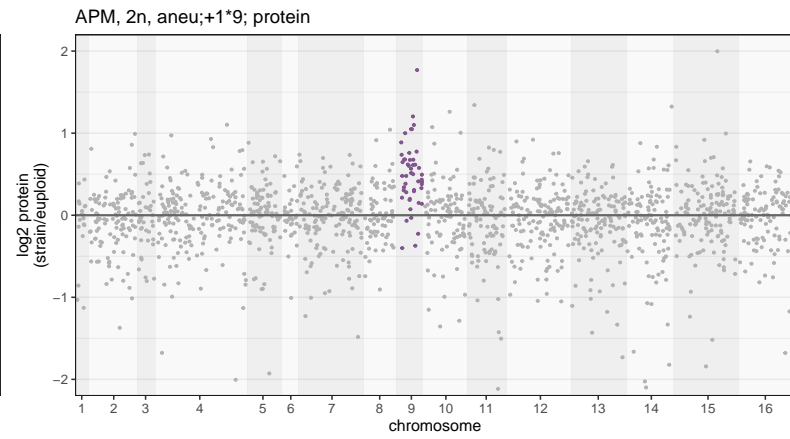
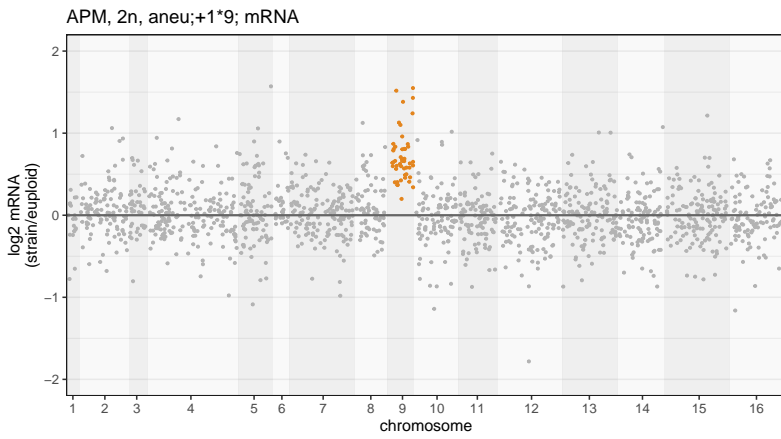
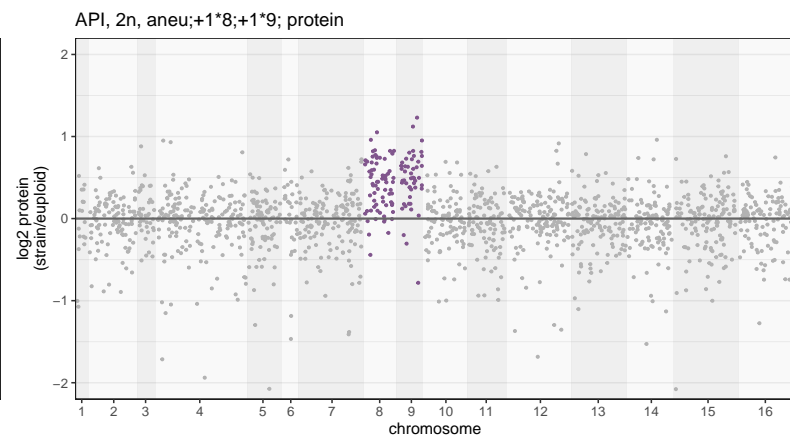
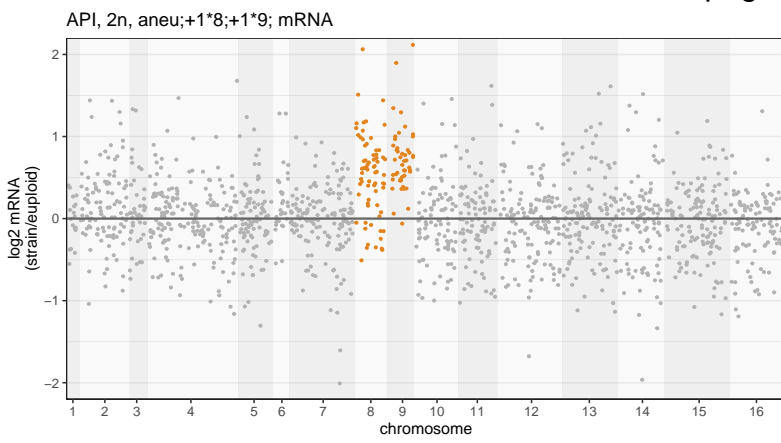
Supplementary Fig. 1, pages 1-20: Depiction of relative mRNA and protein levels as in Fig. 3a for each aneuploid natural isolate.

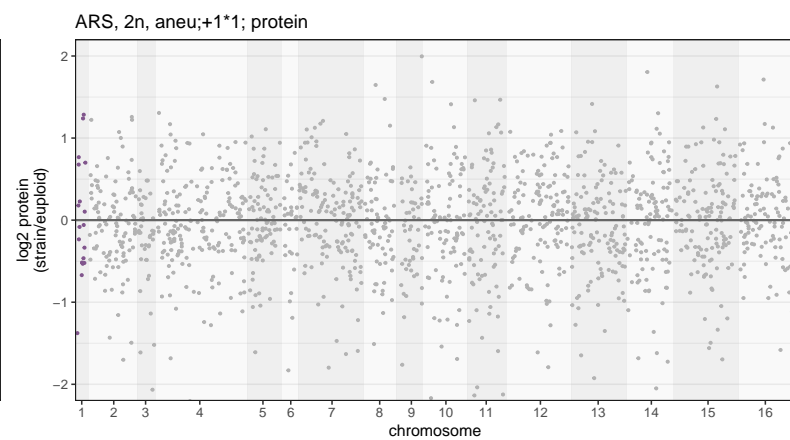
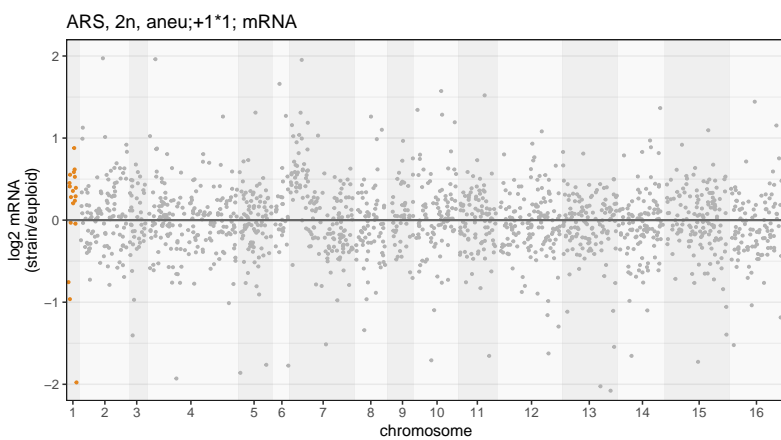
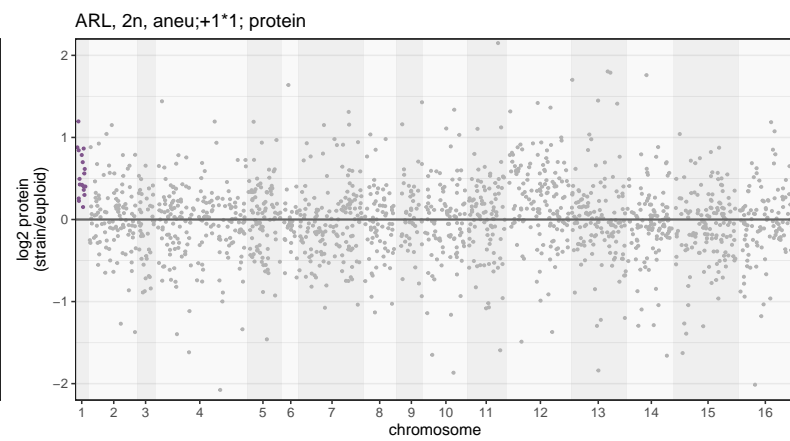
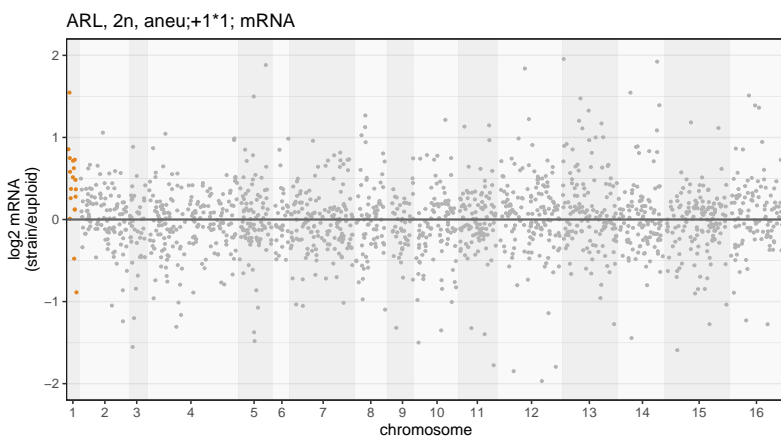
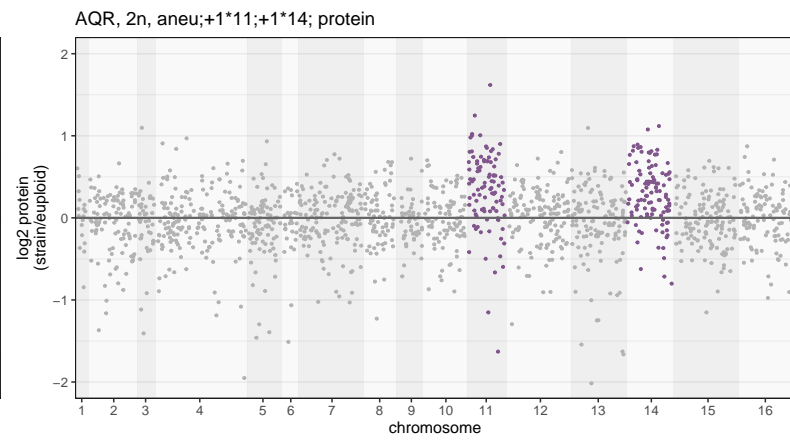
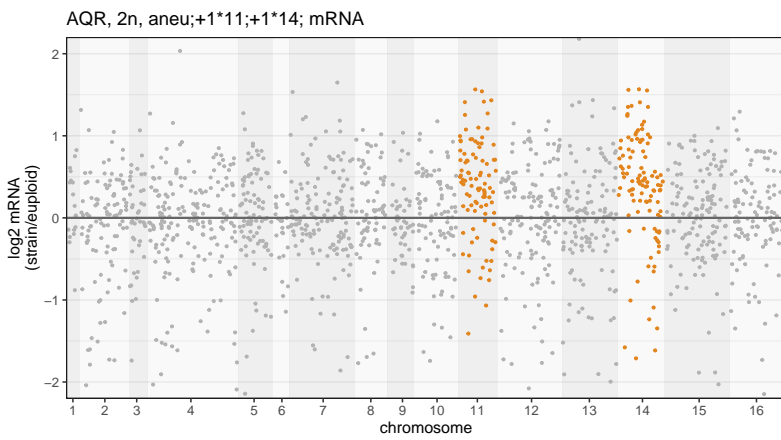
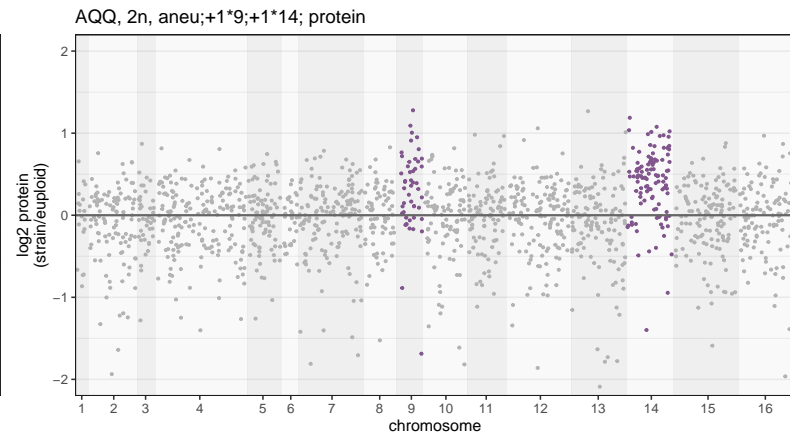
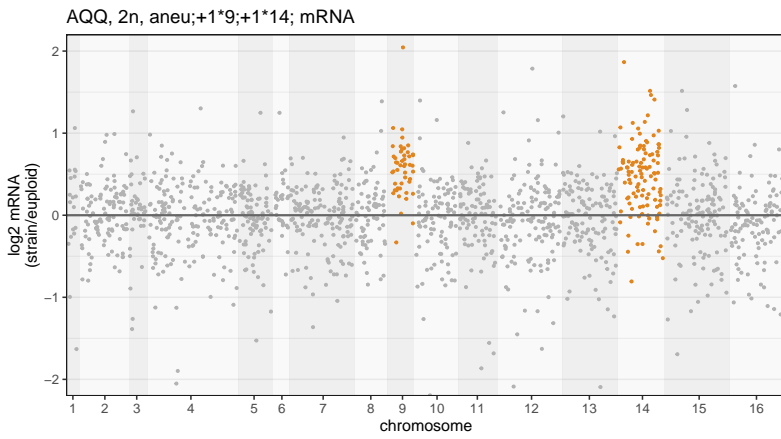
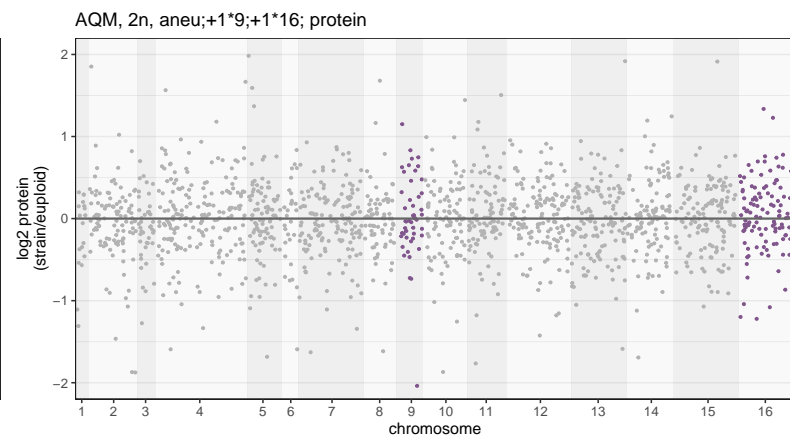
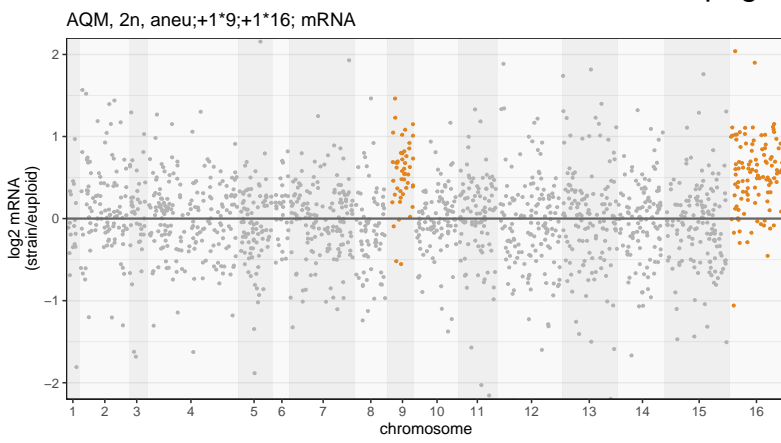


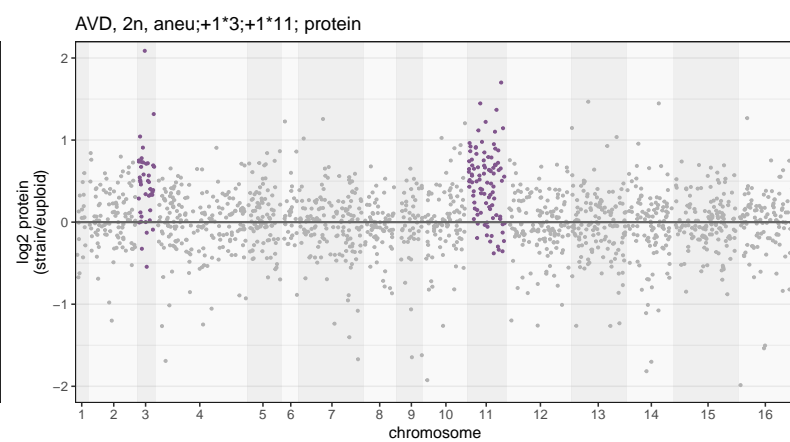
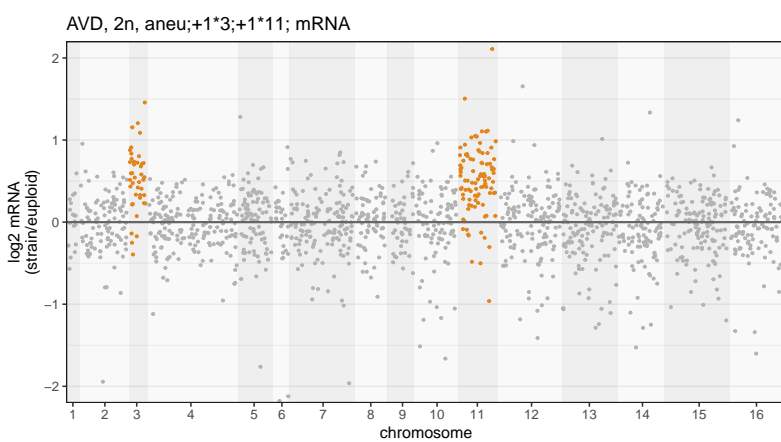
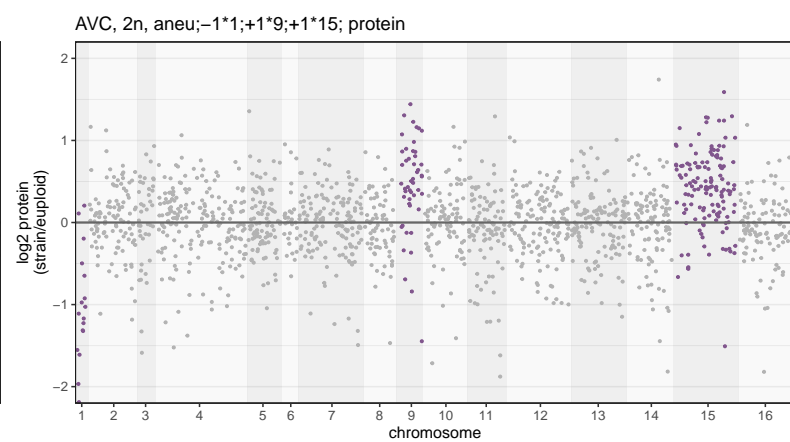
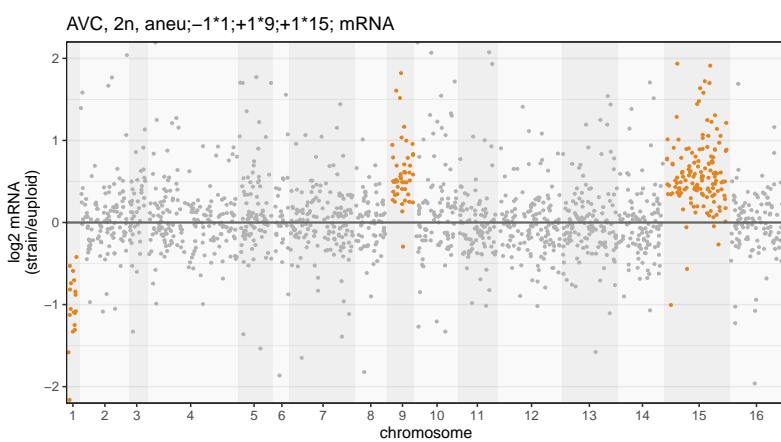
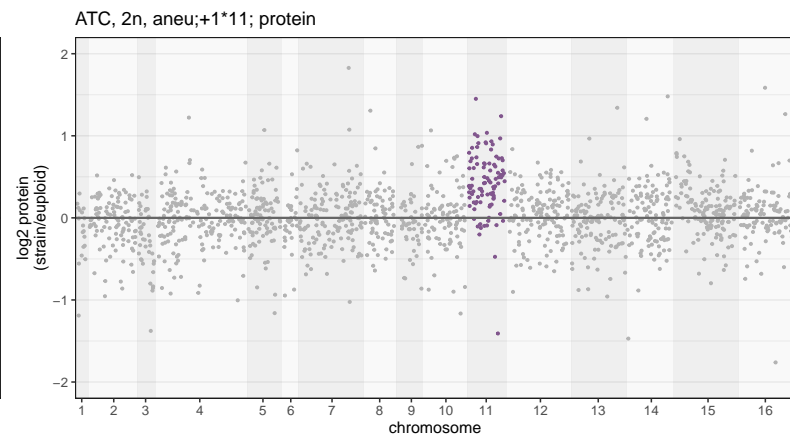
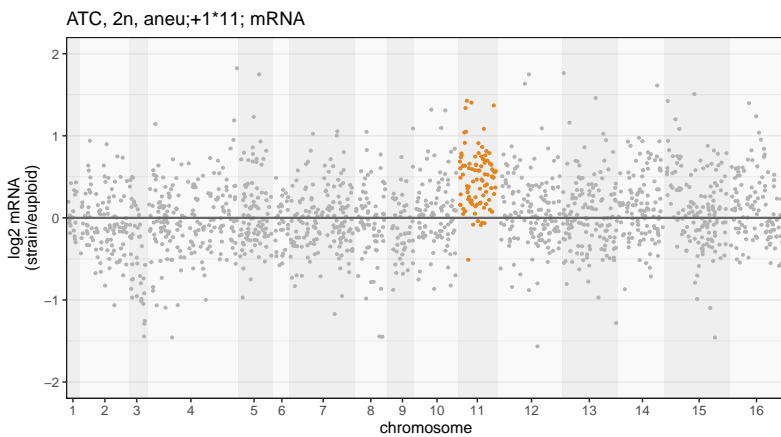
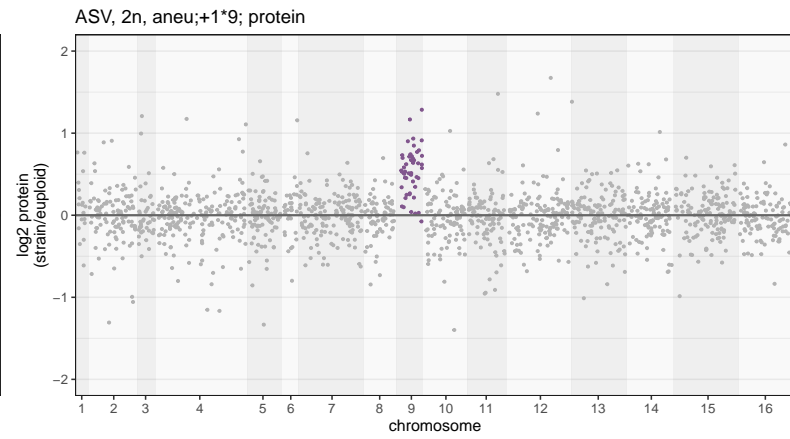
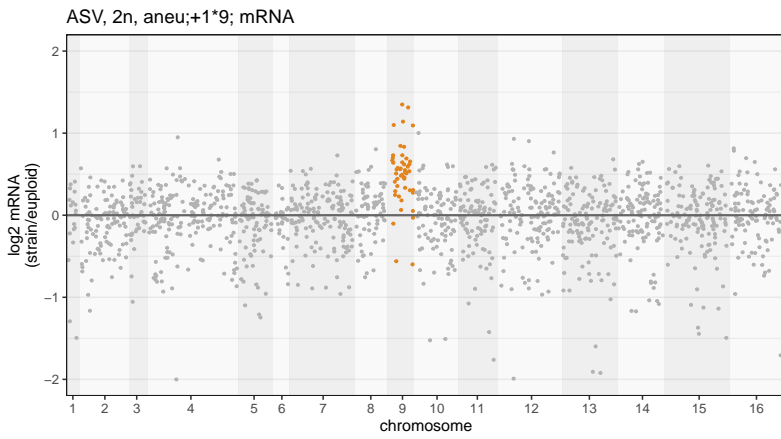
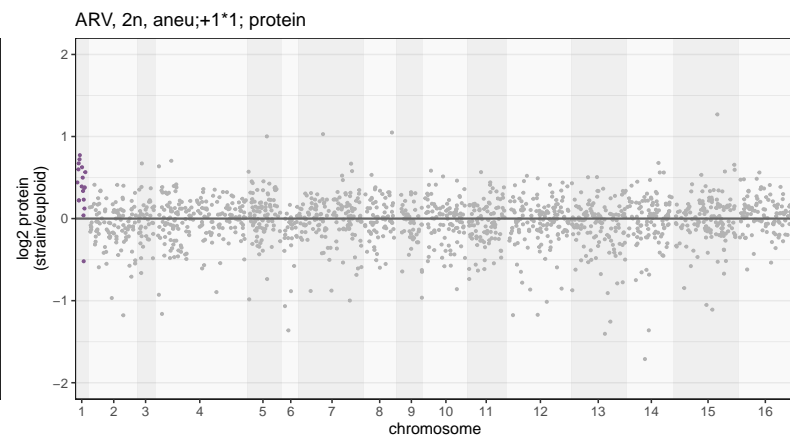
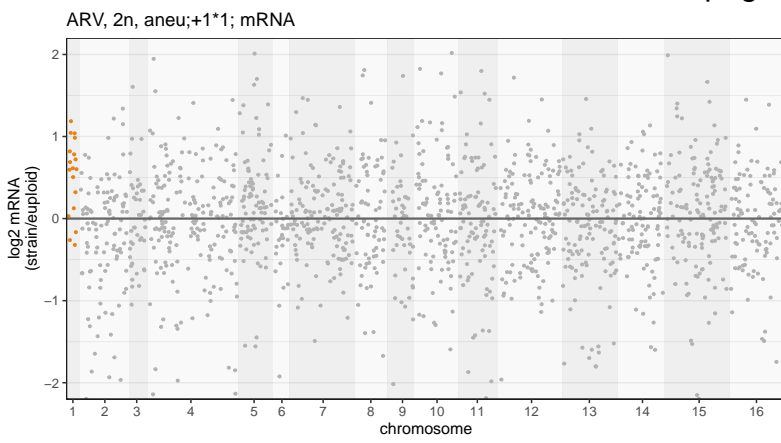


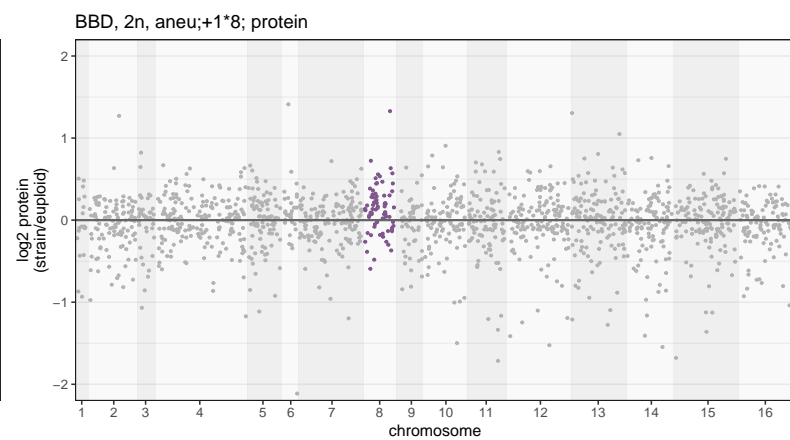
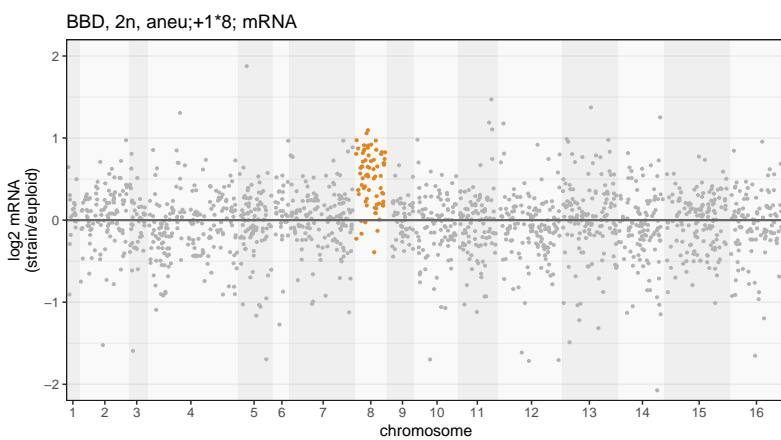
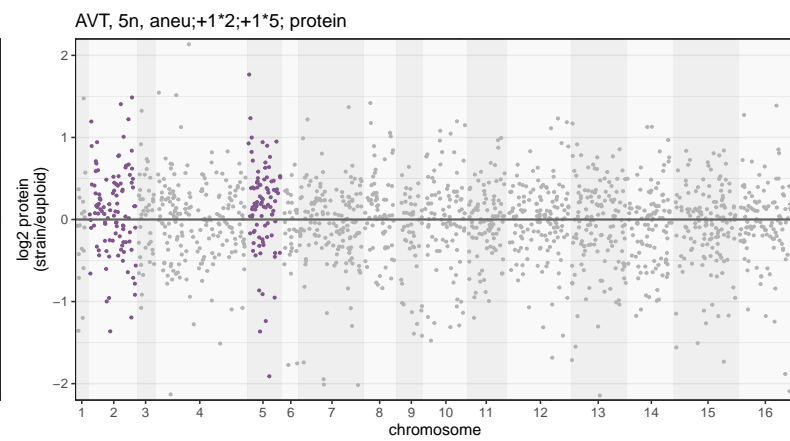
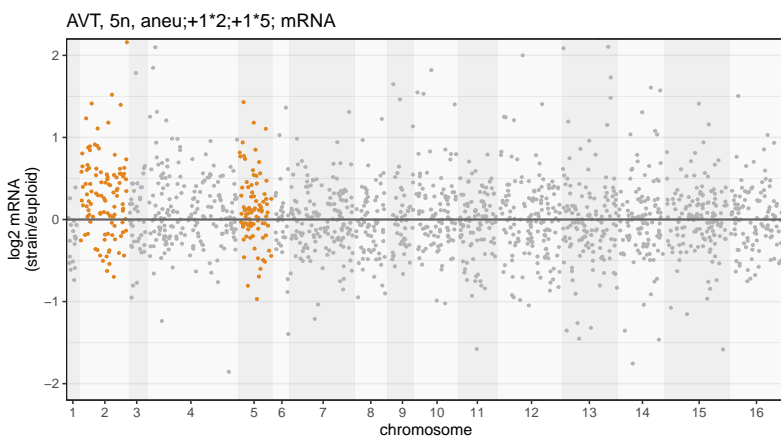
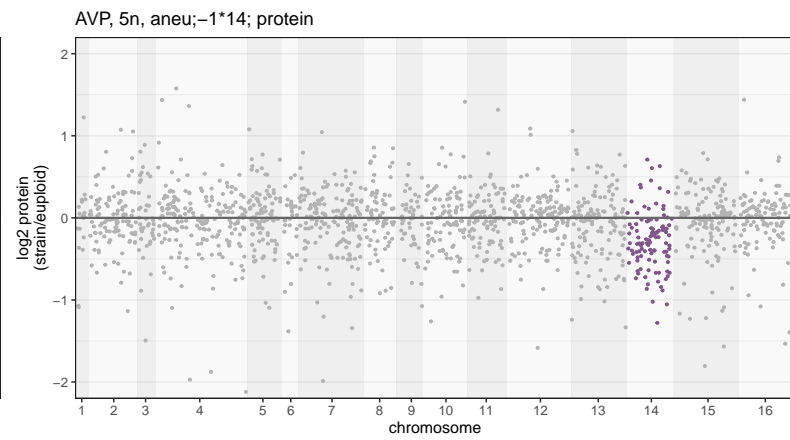
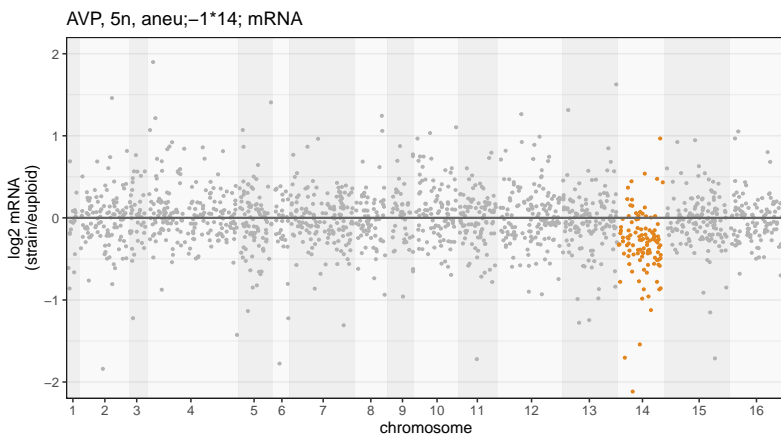
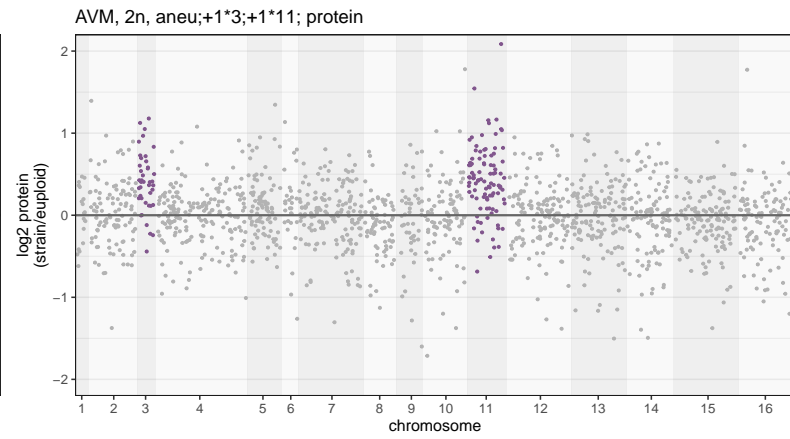
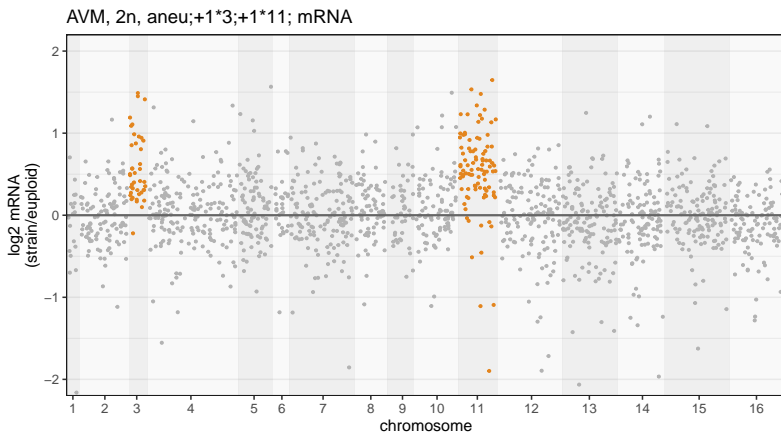
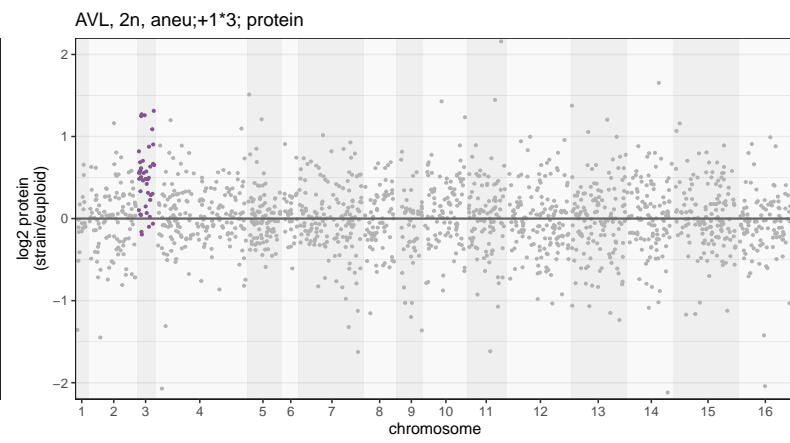
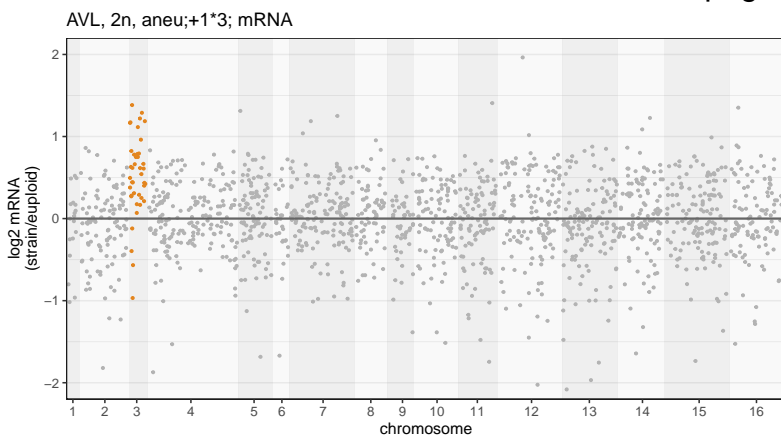


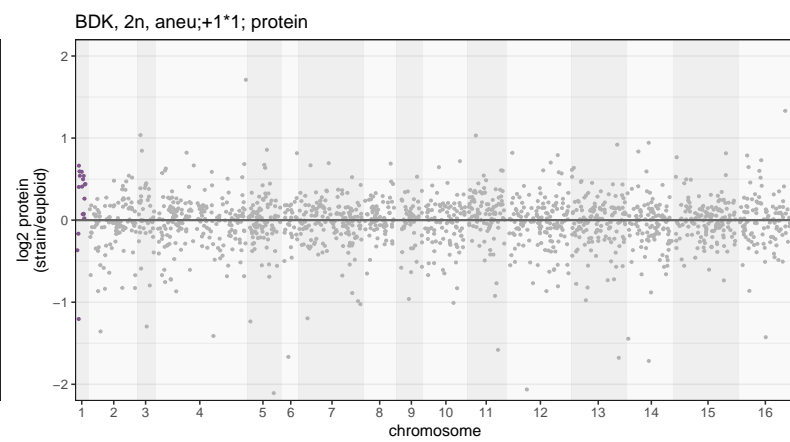
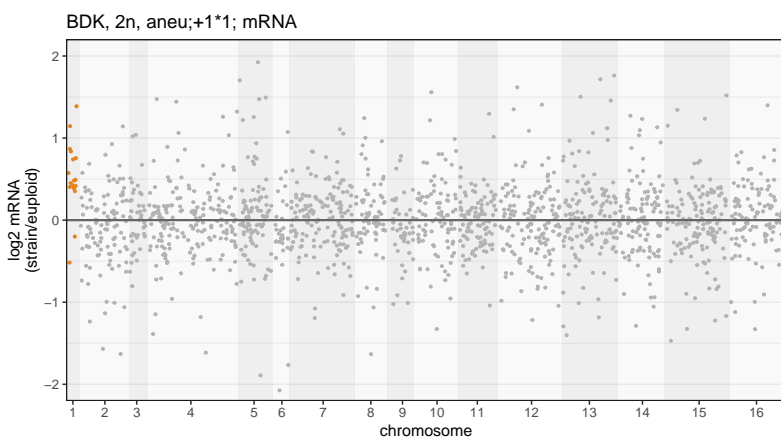
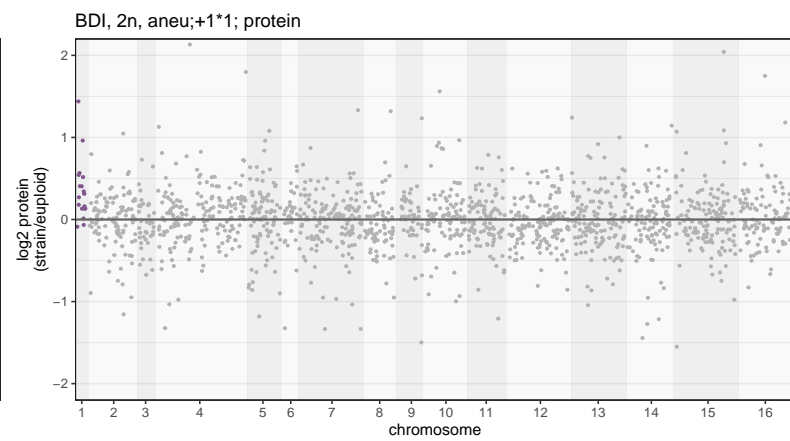
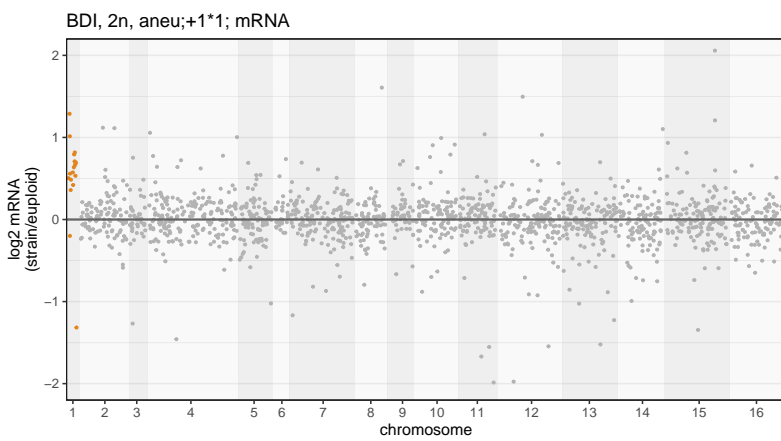
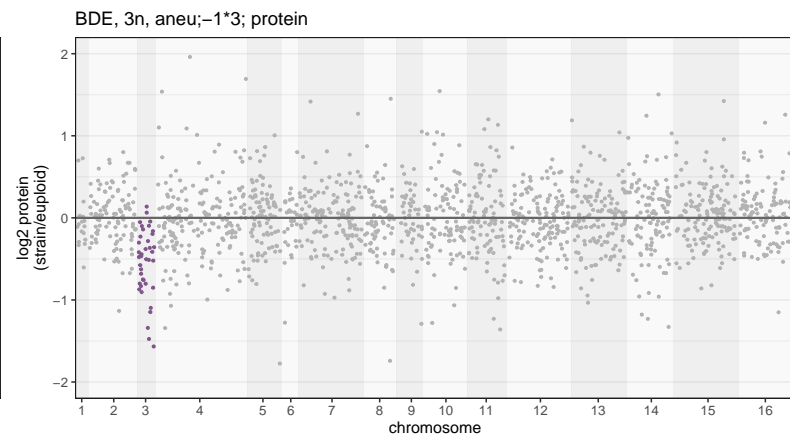
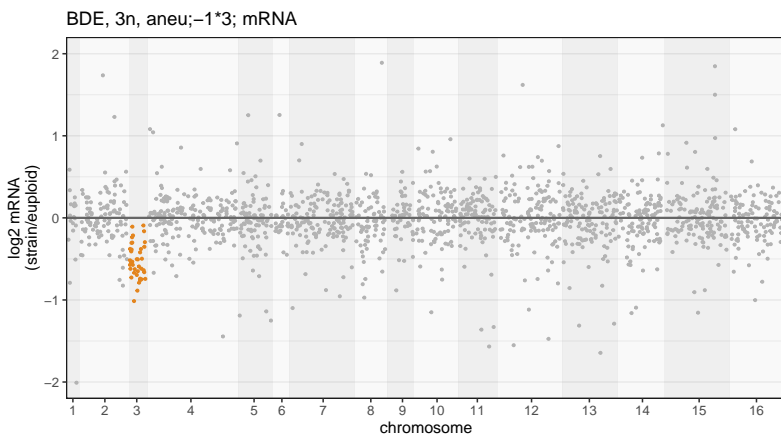
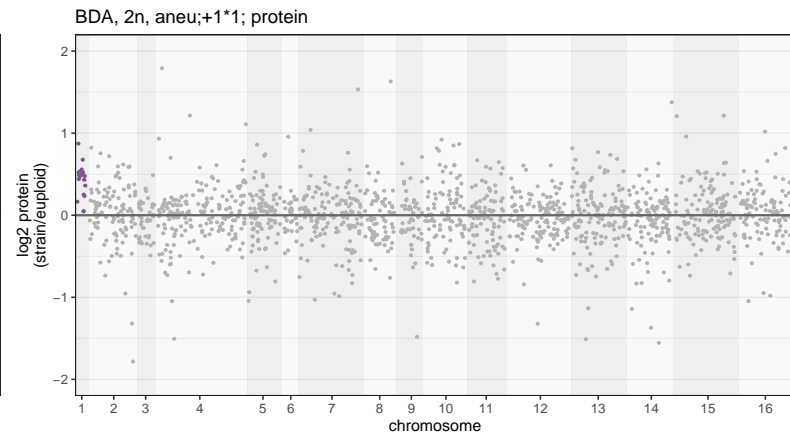
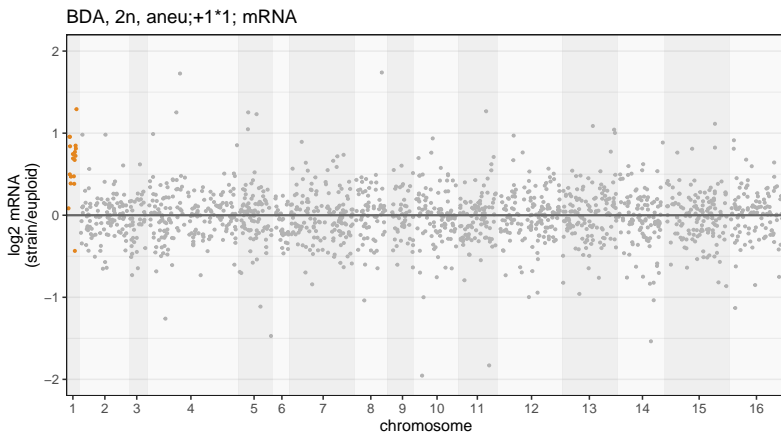
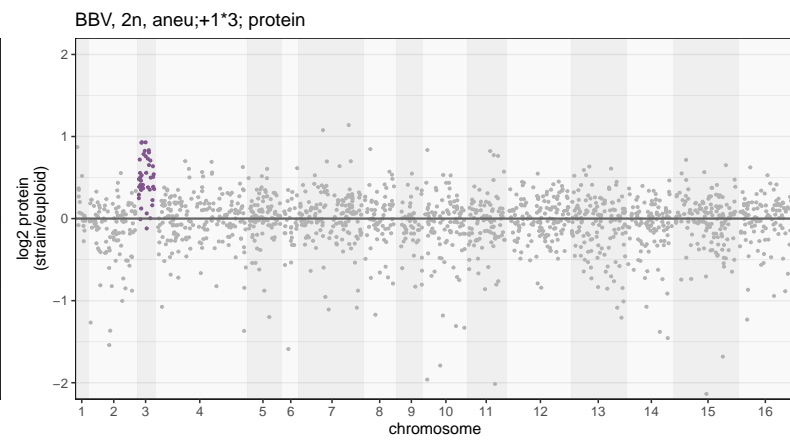
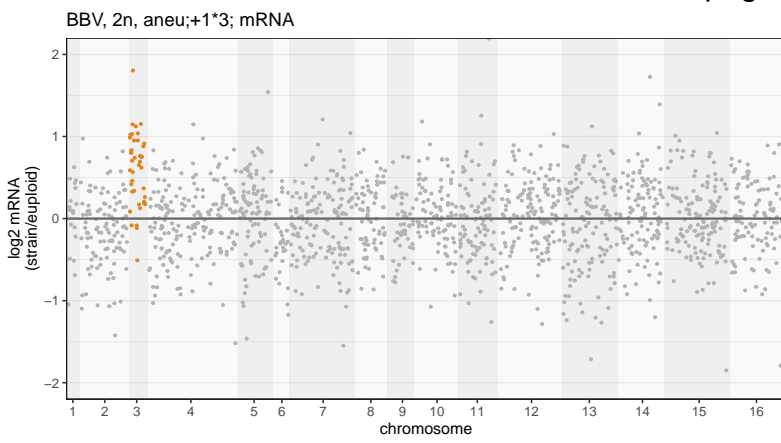


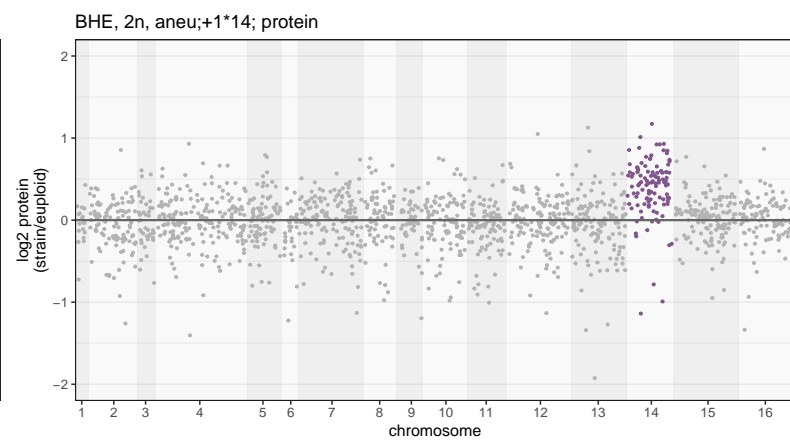
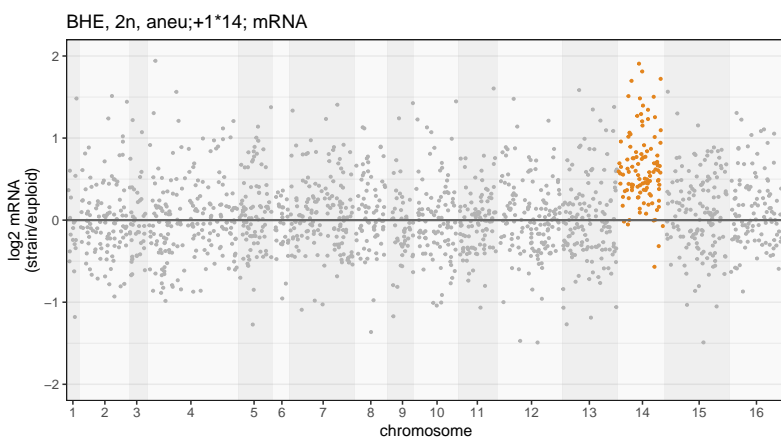
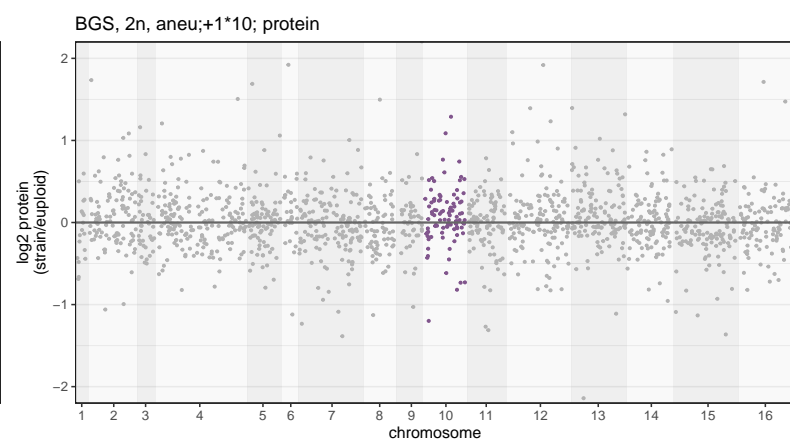
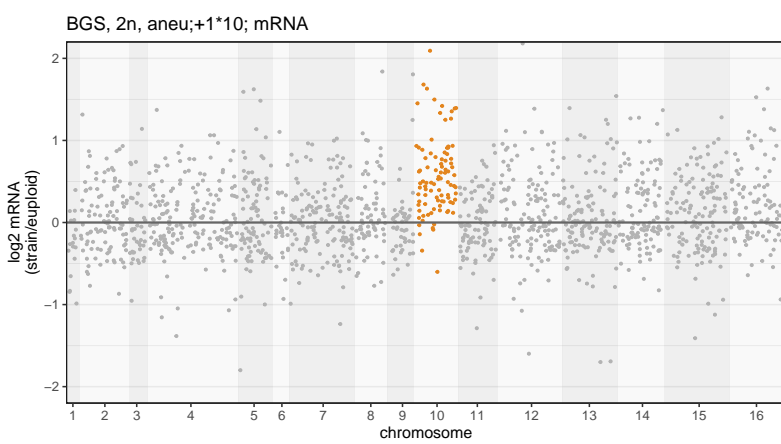
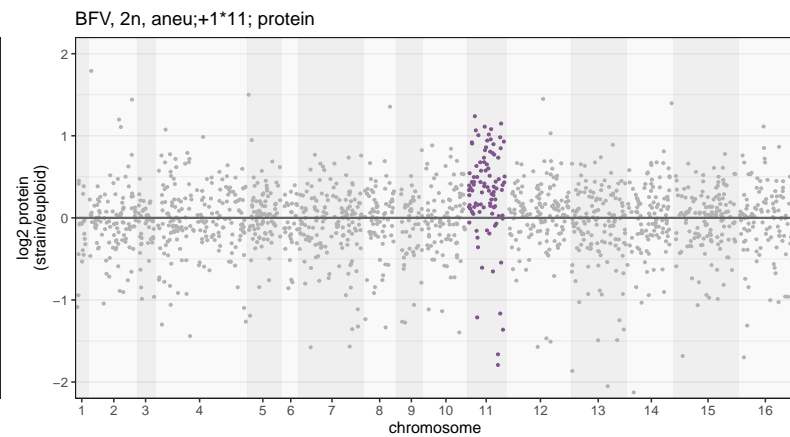
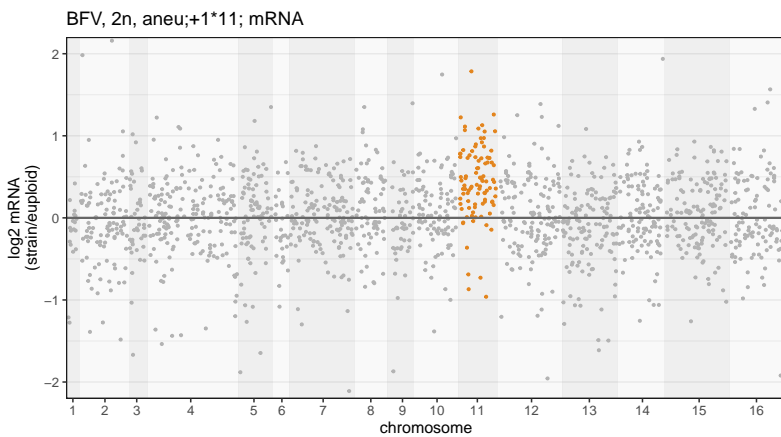
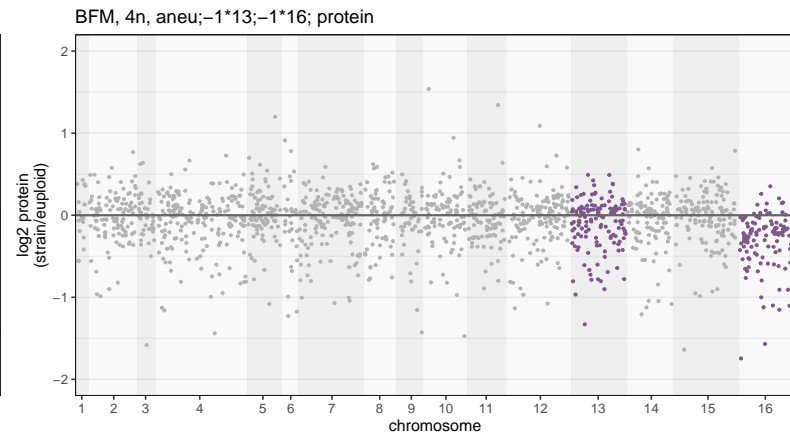
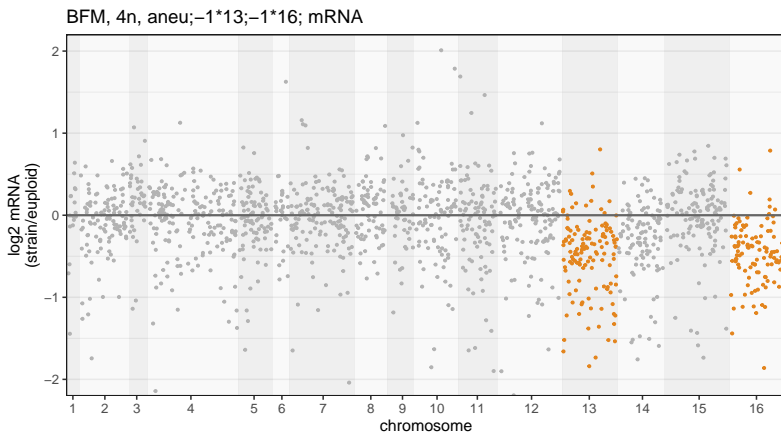
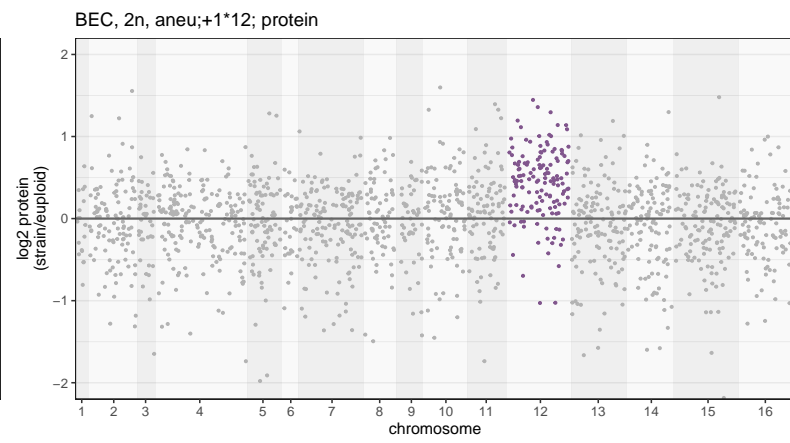
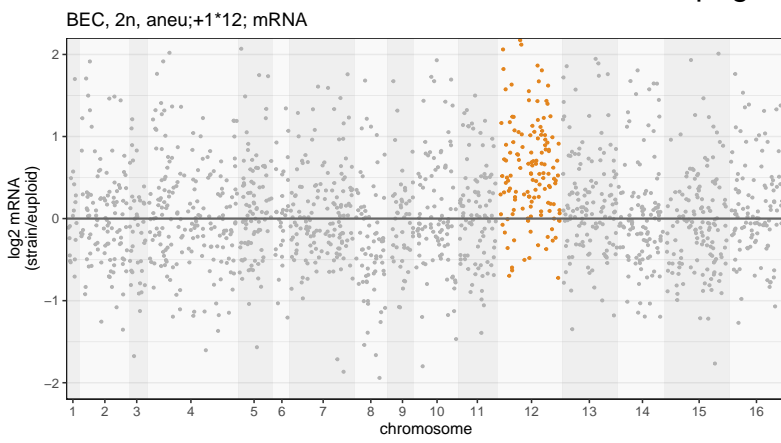


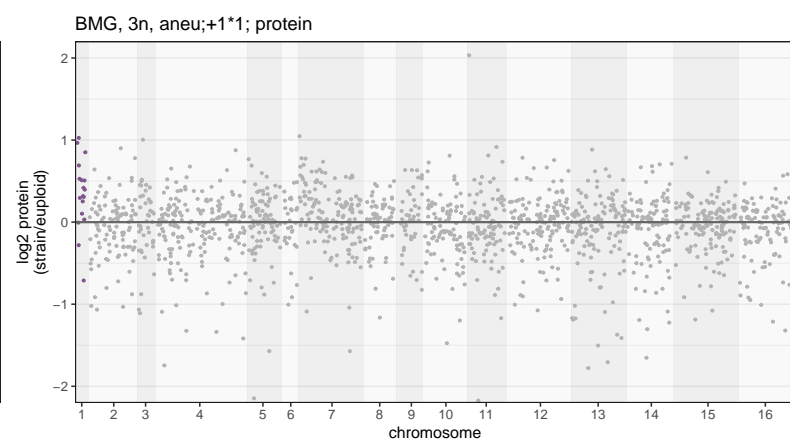
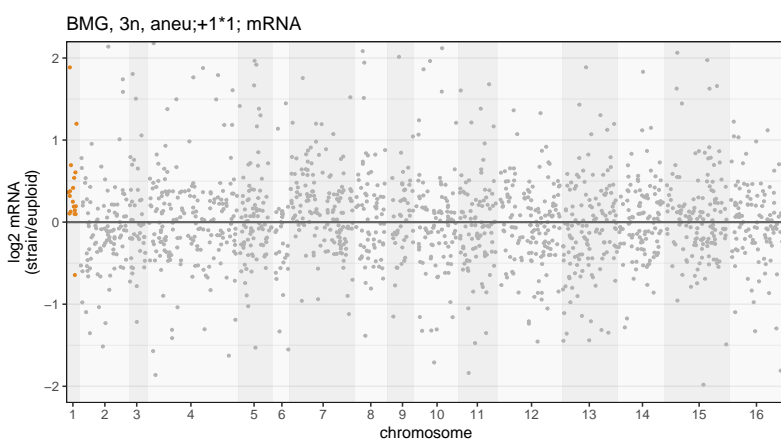
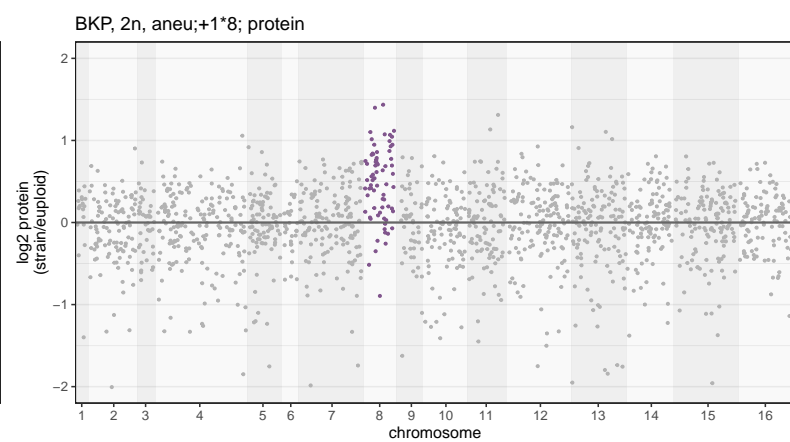
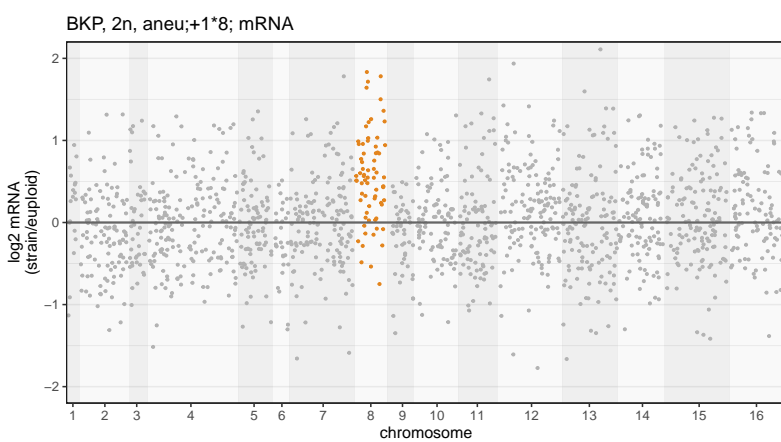
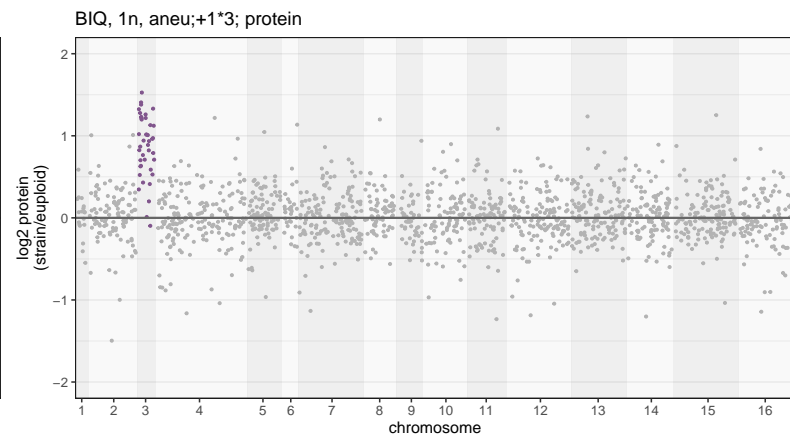
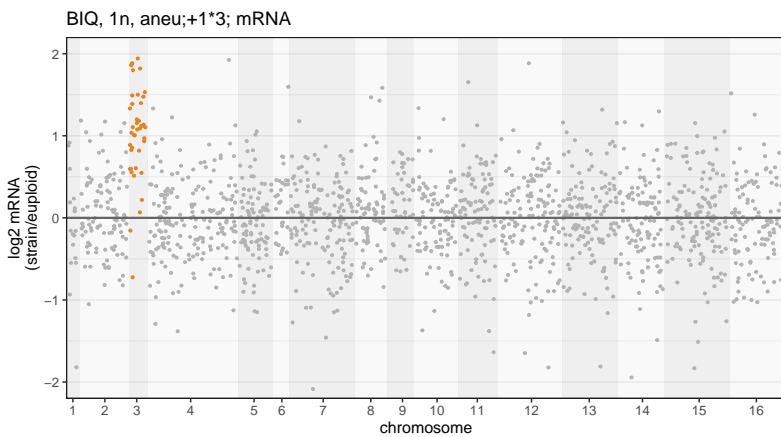
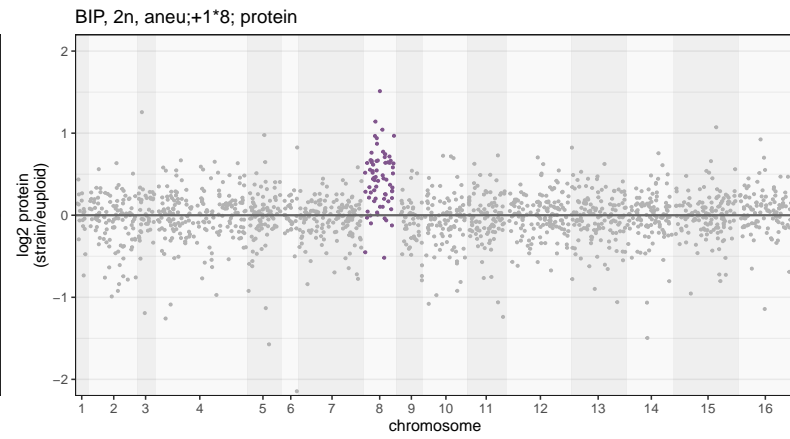
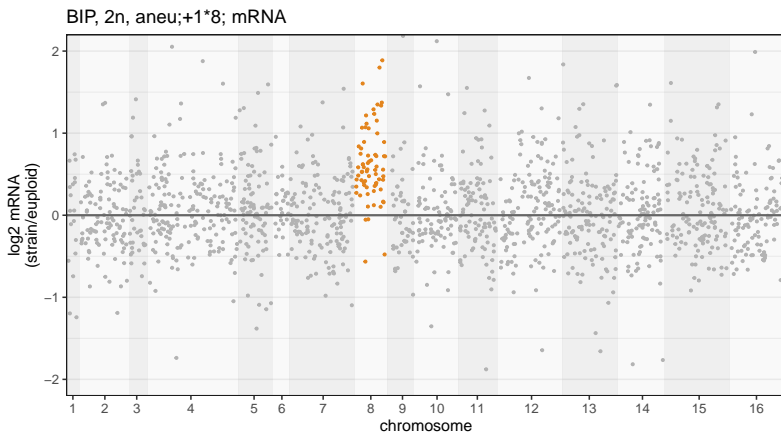
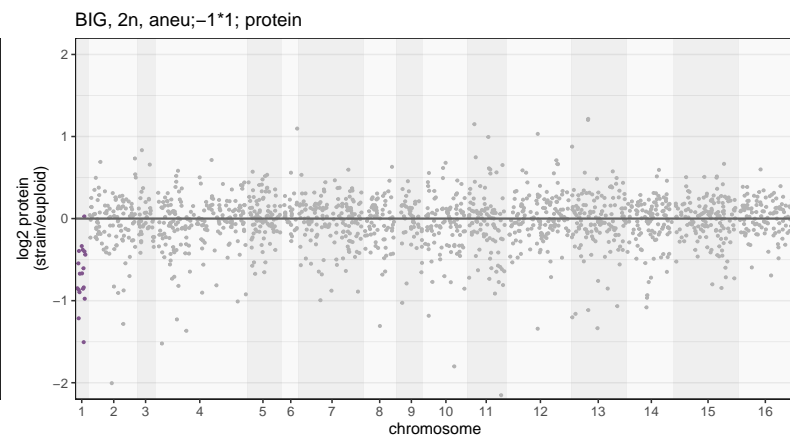
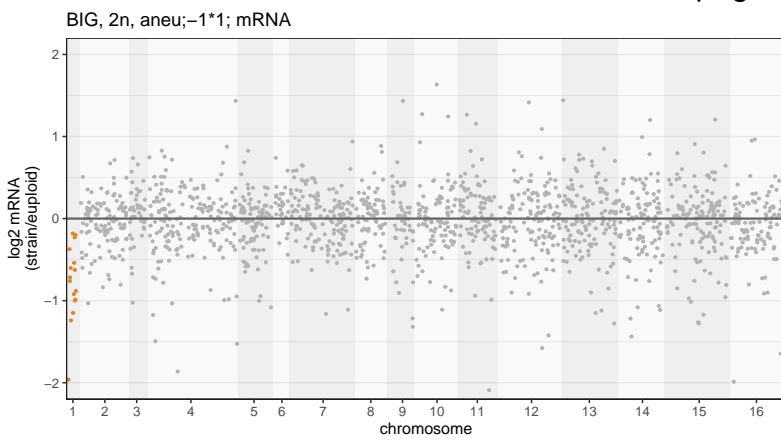


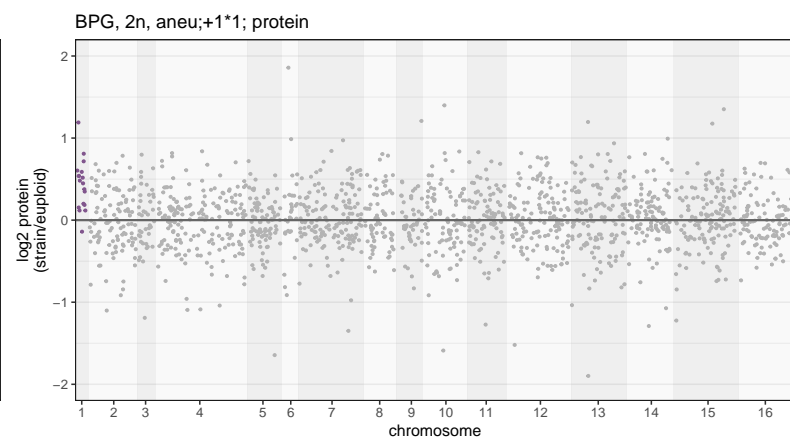
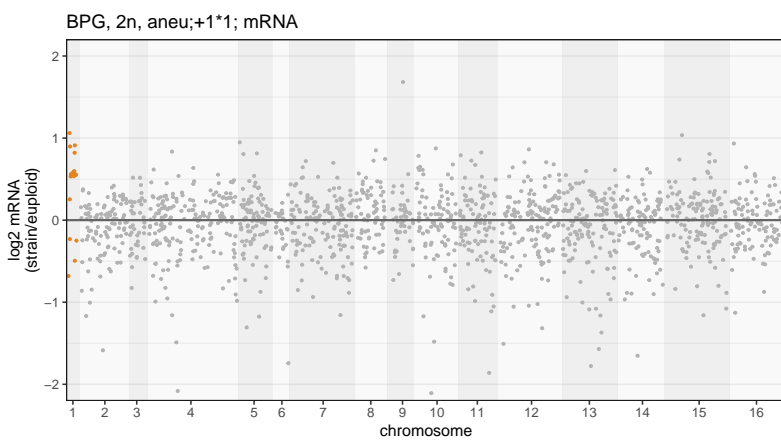
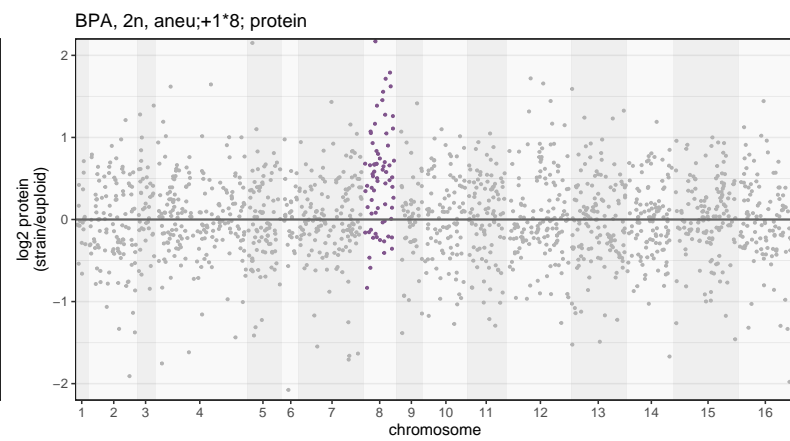
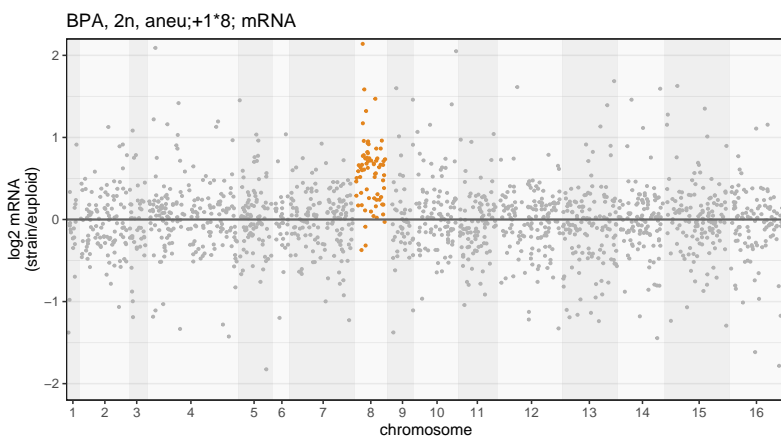
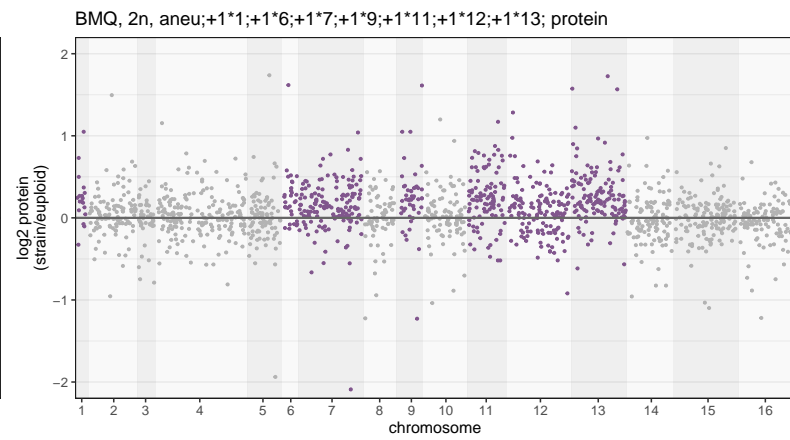
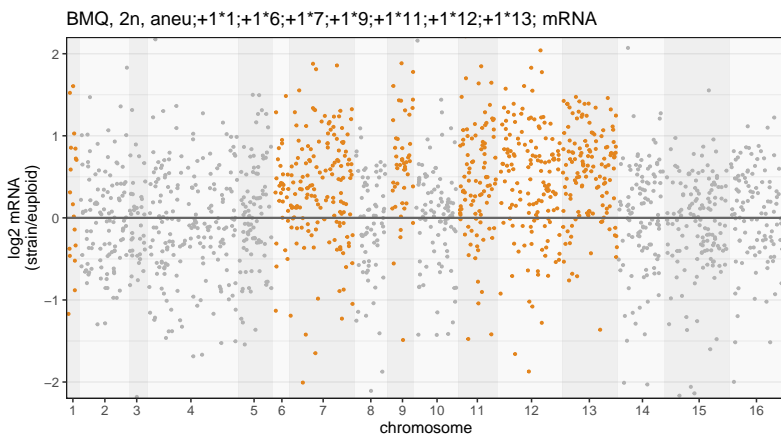
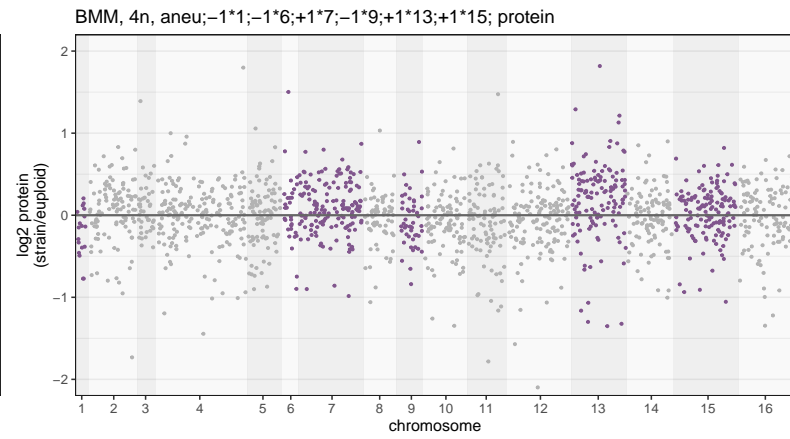
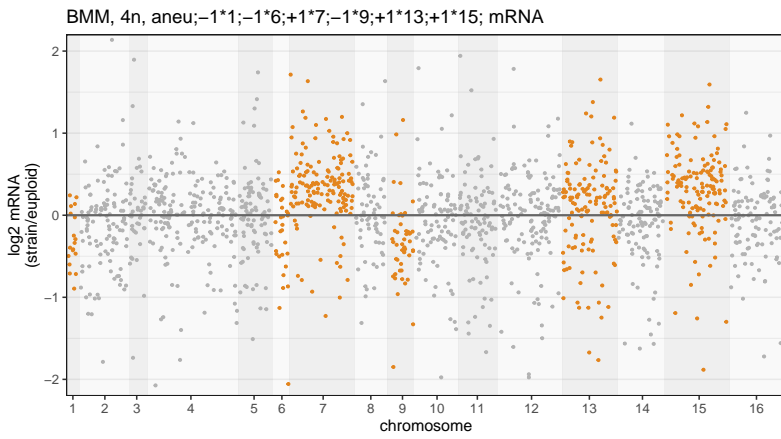
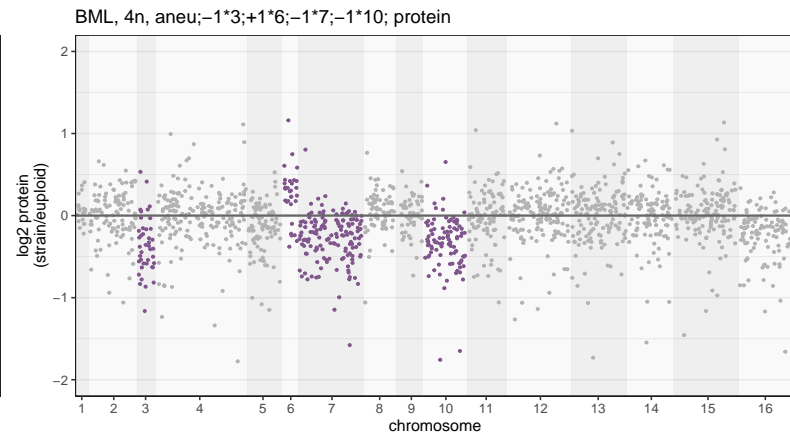
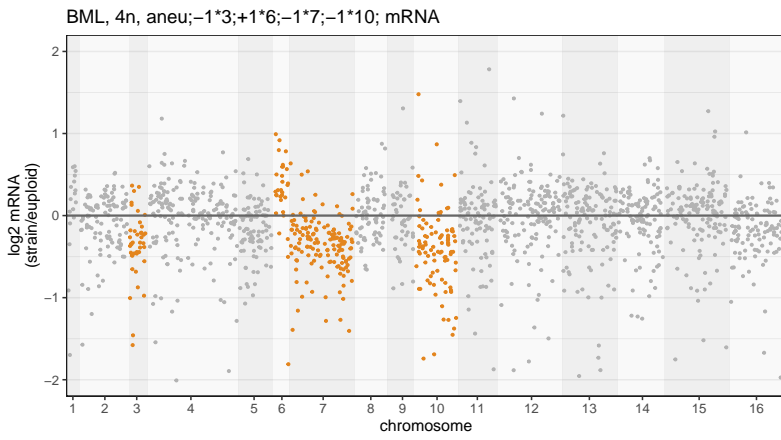


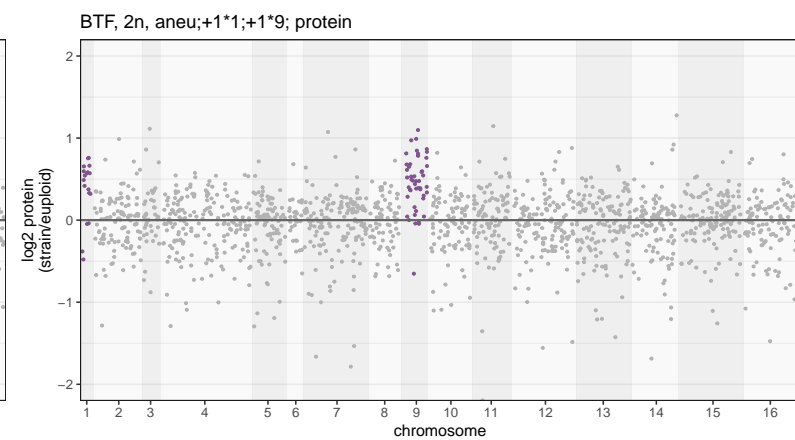
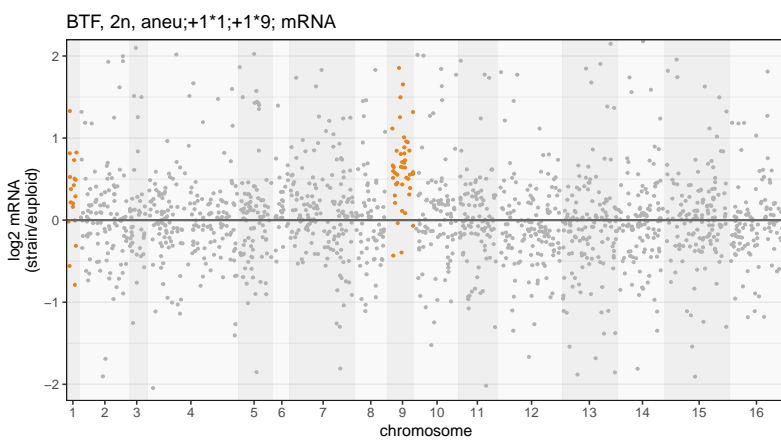
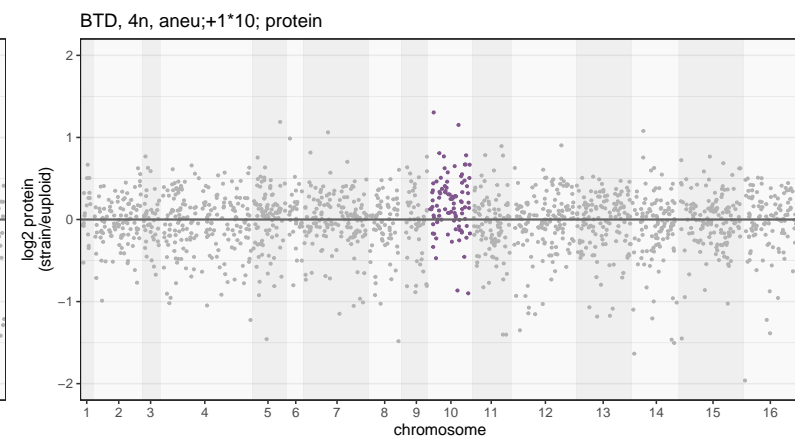
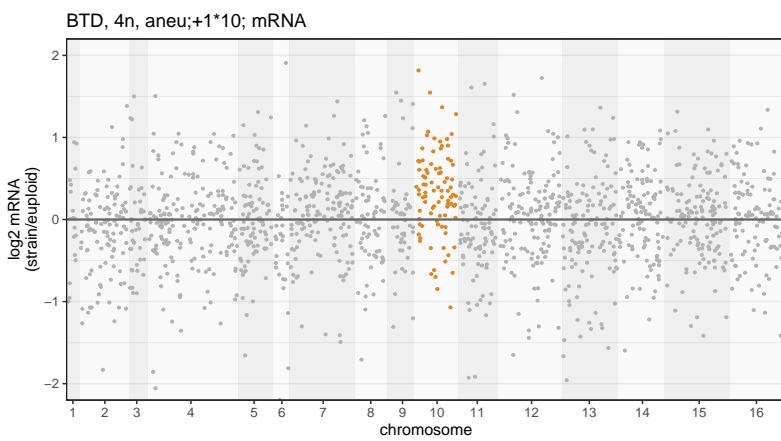
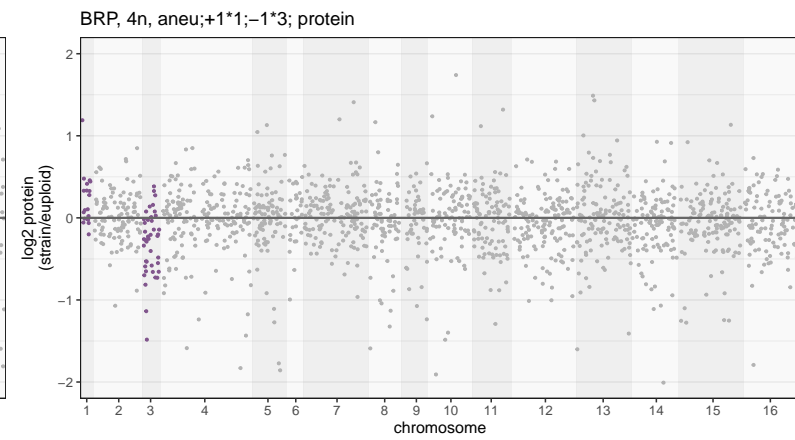
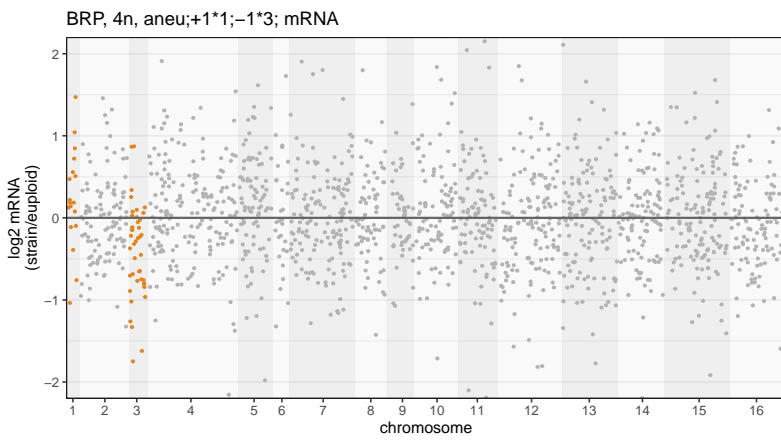
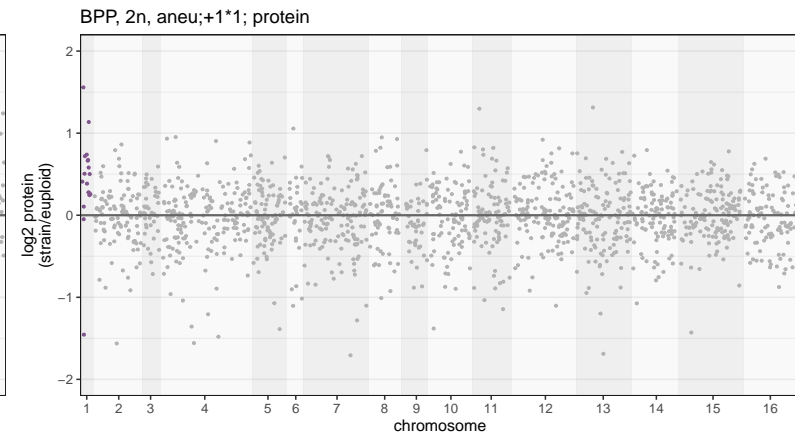
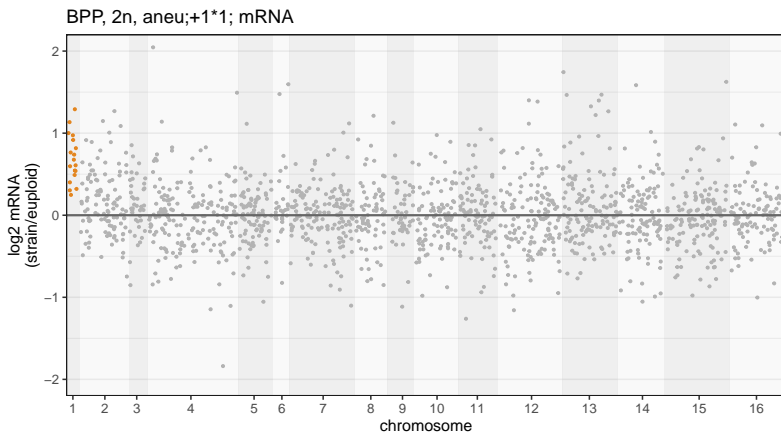
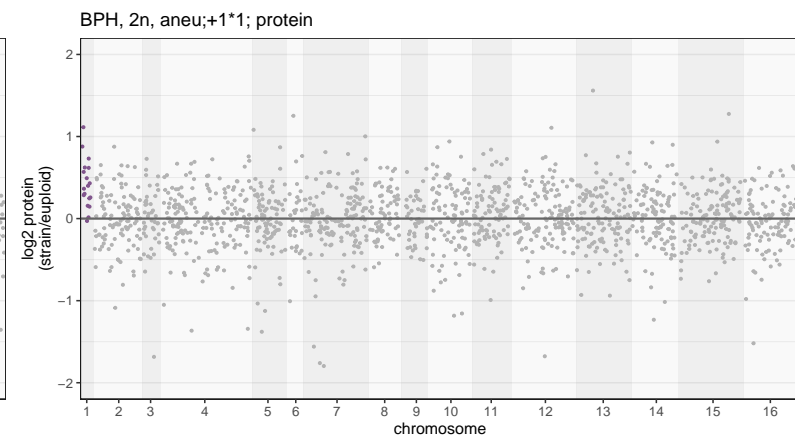
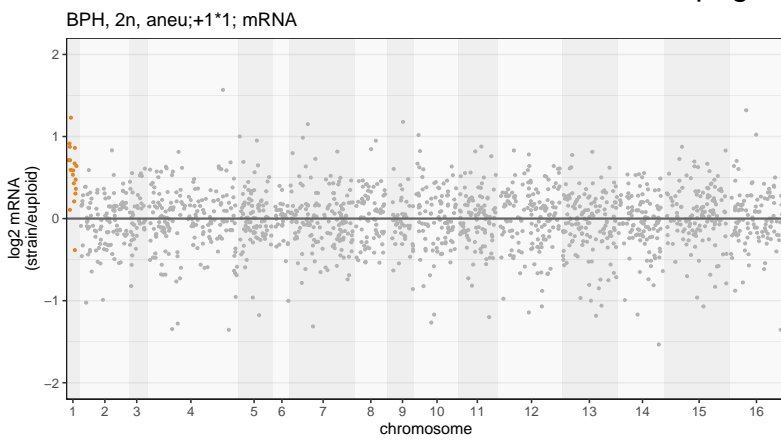


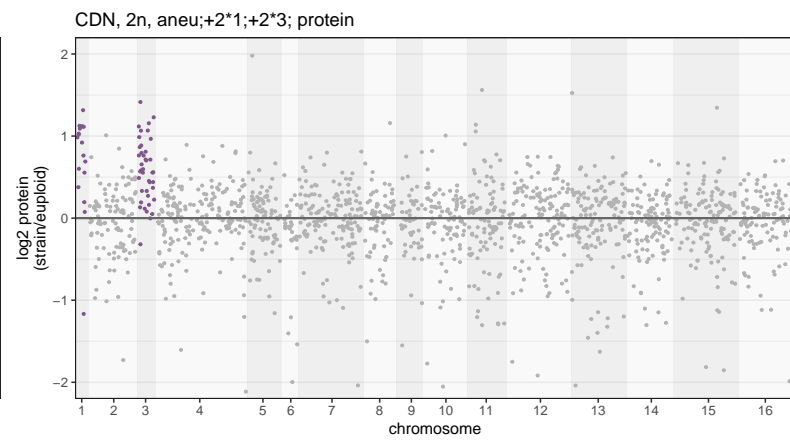
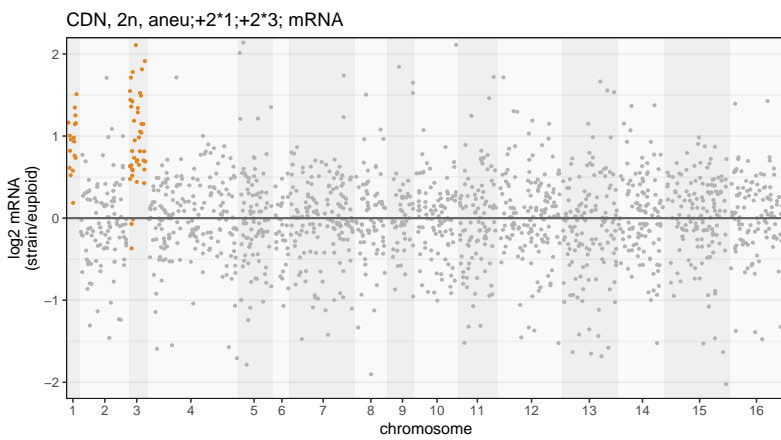
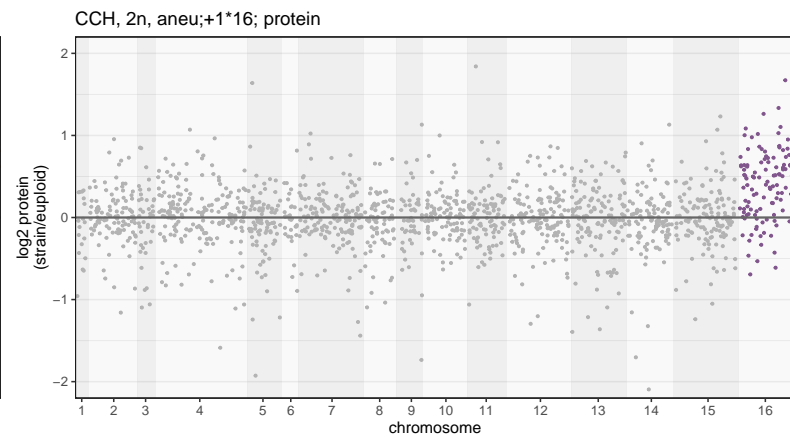
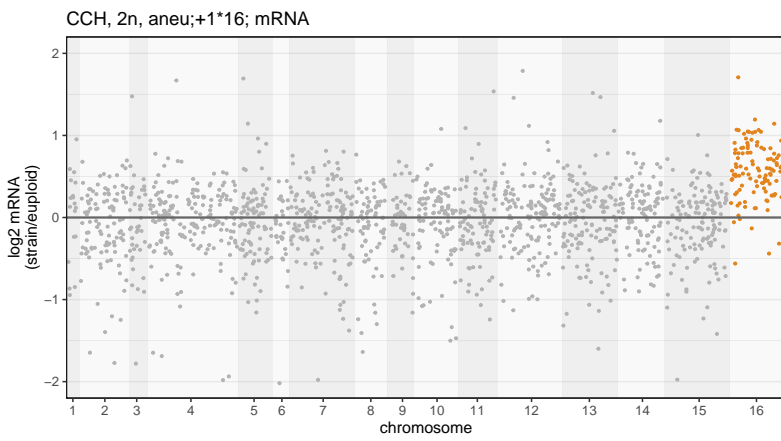
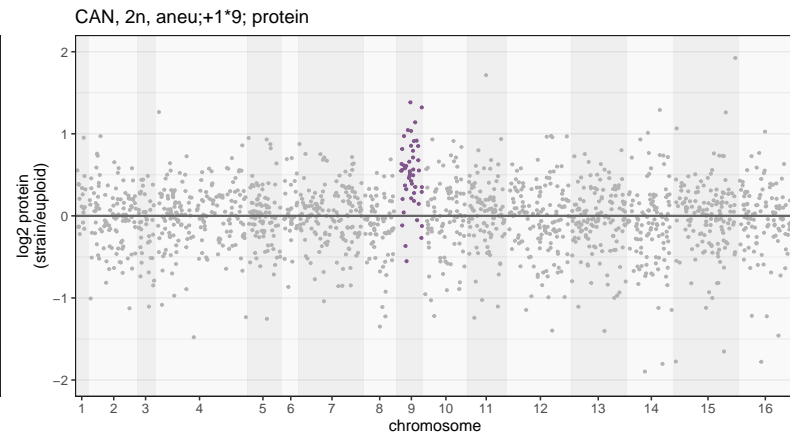
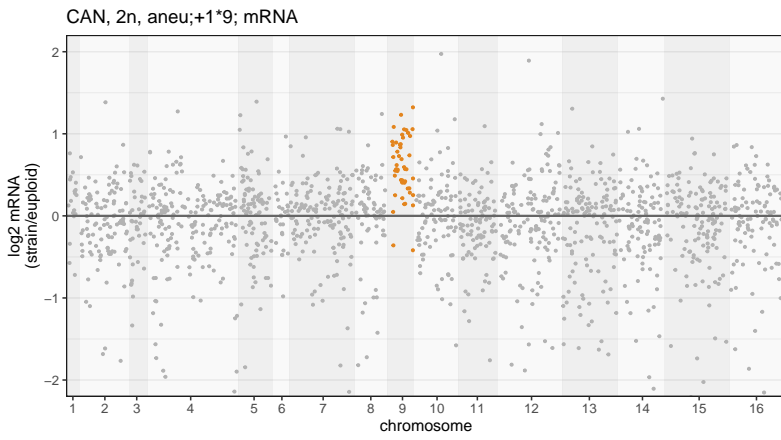
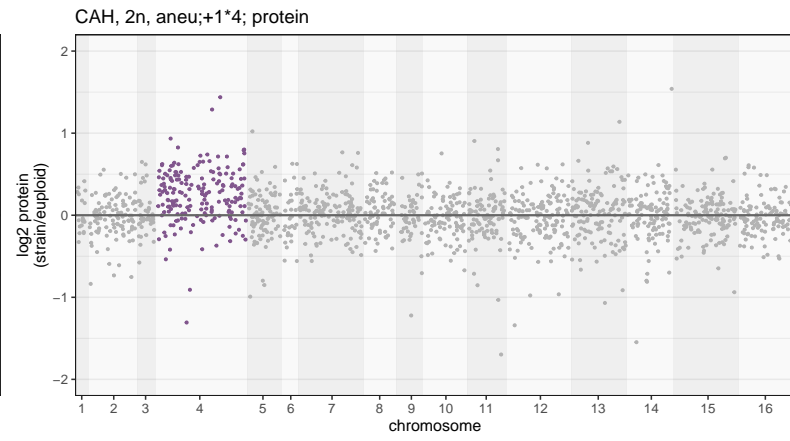
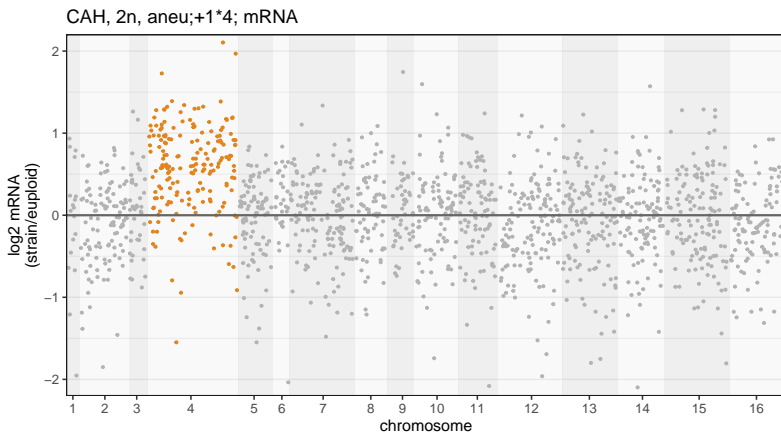
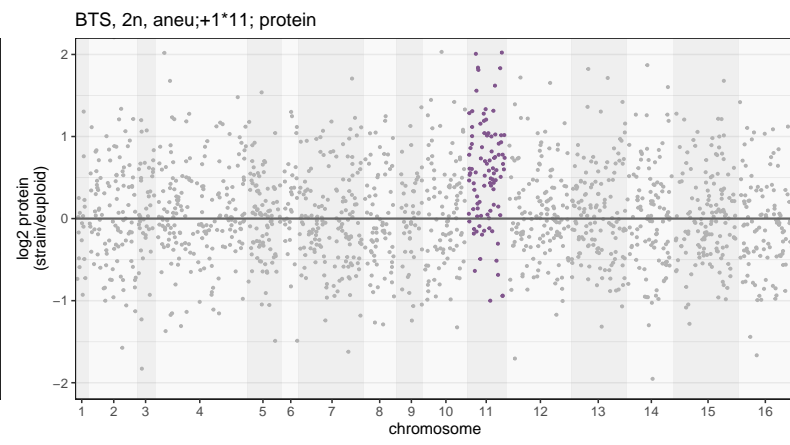
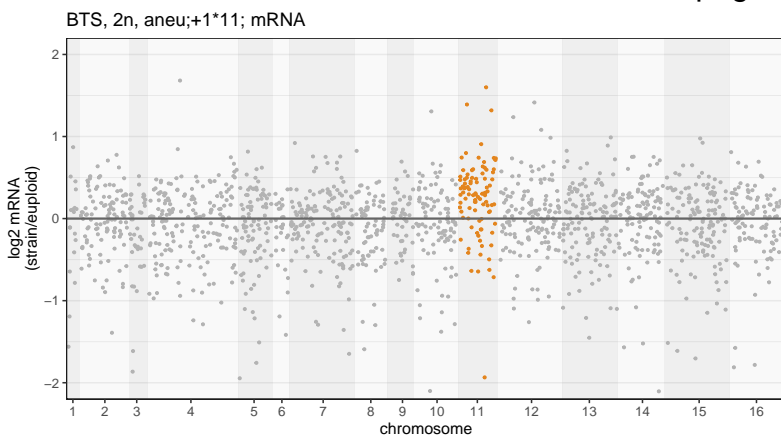


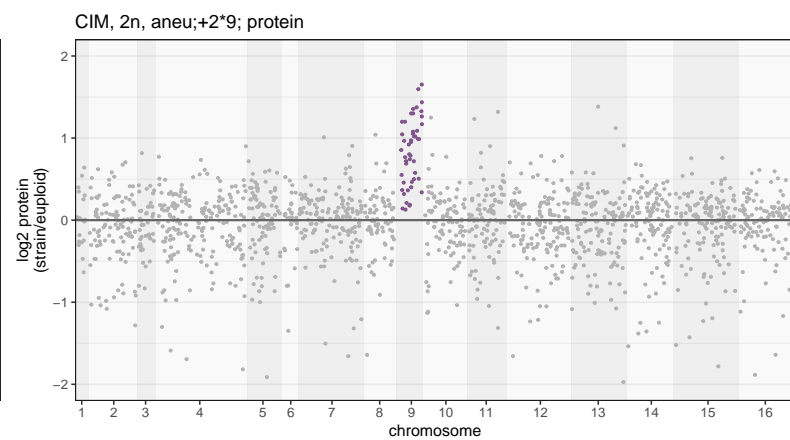
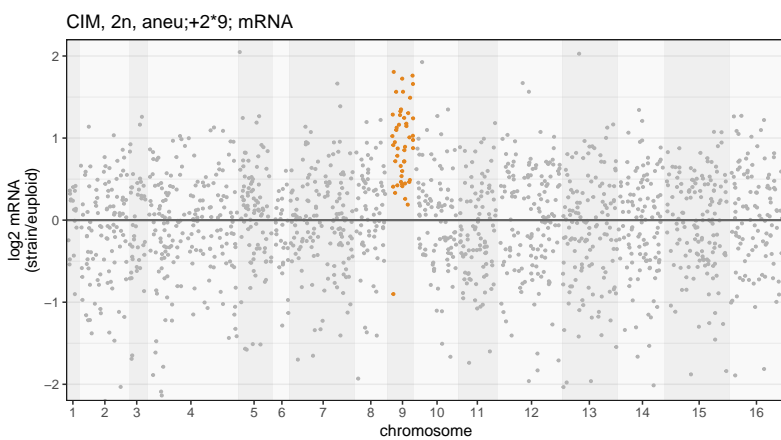
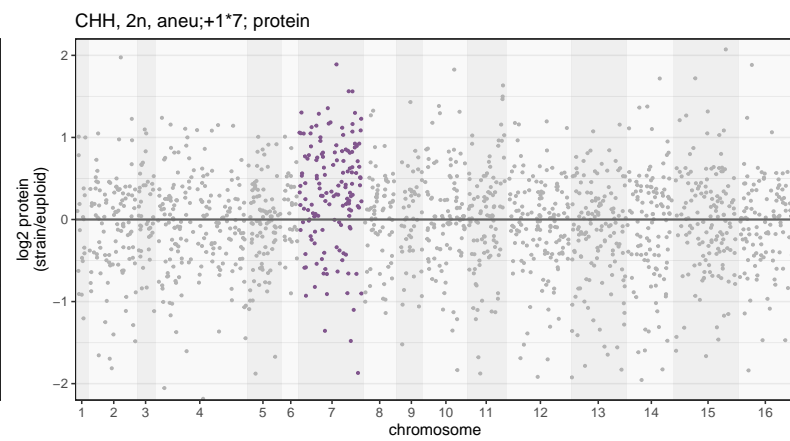
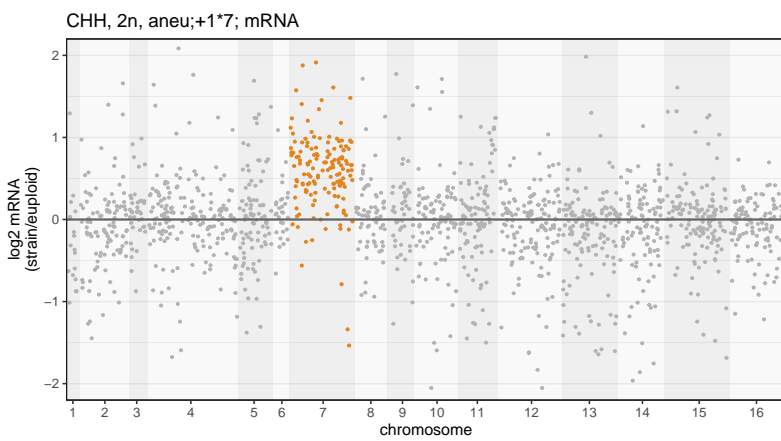
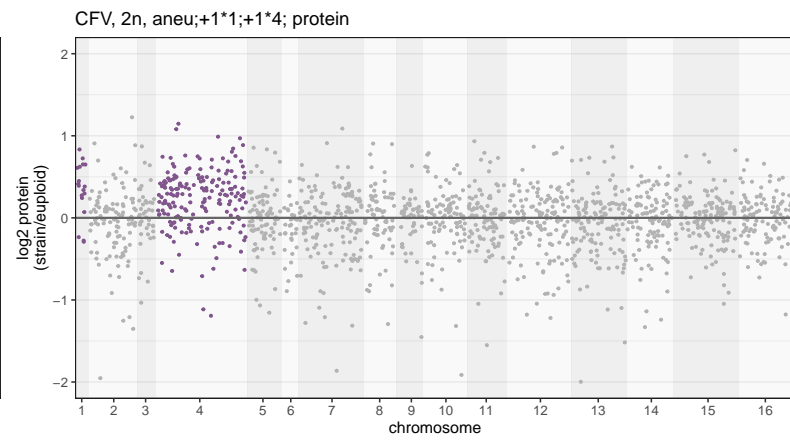
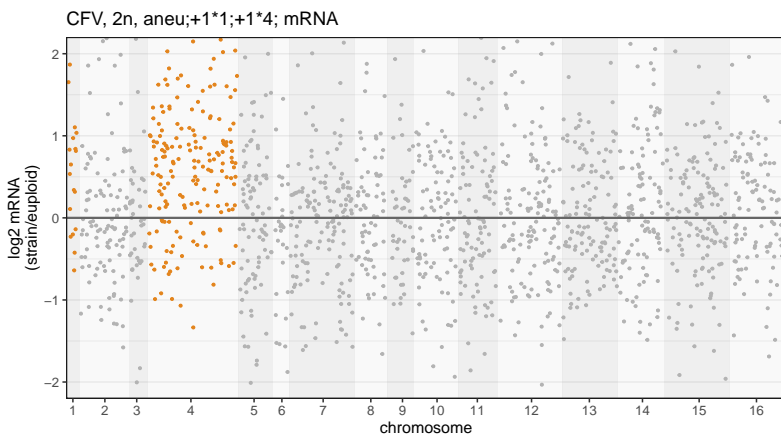
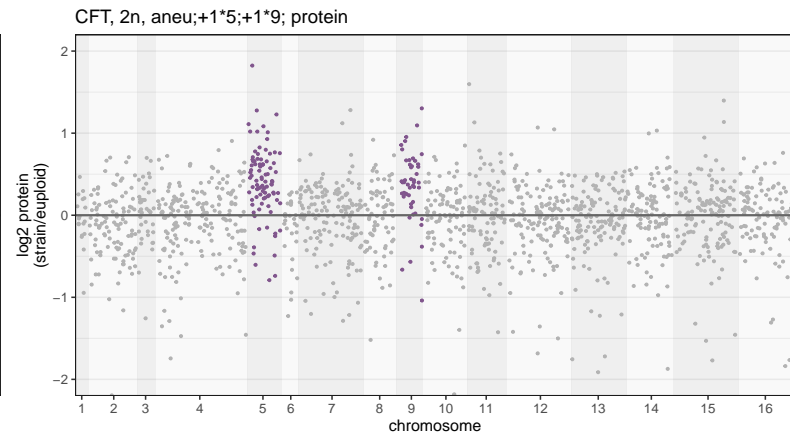
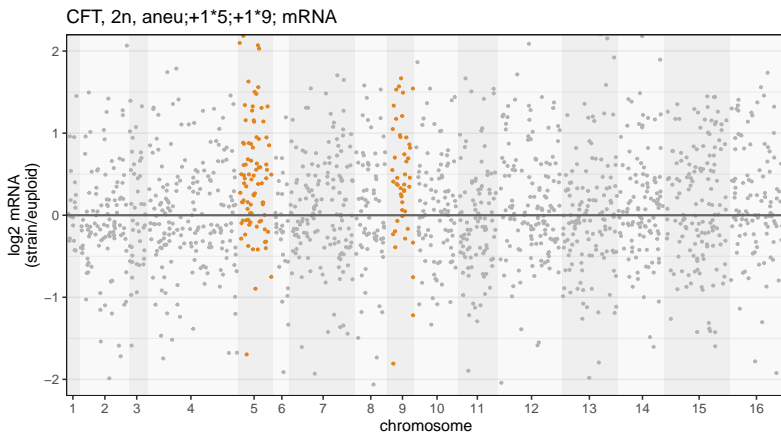
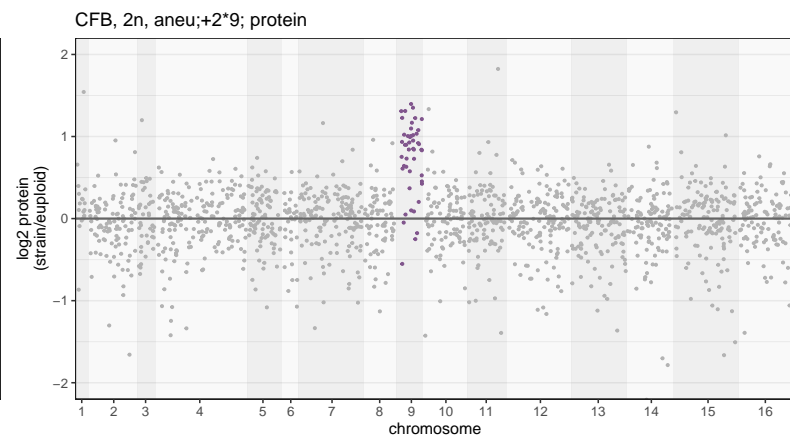
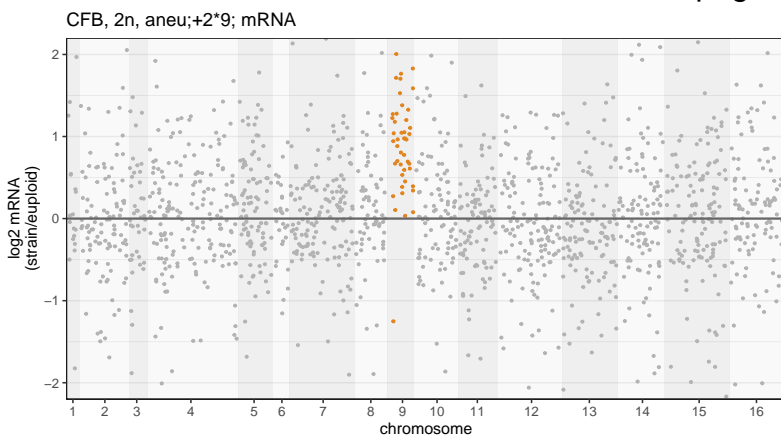


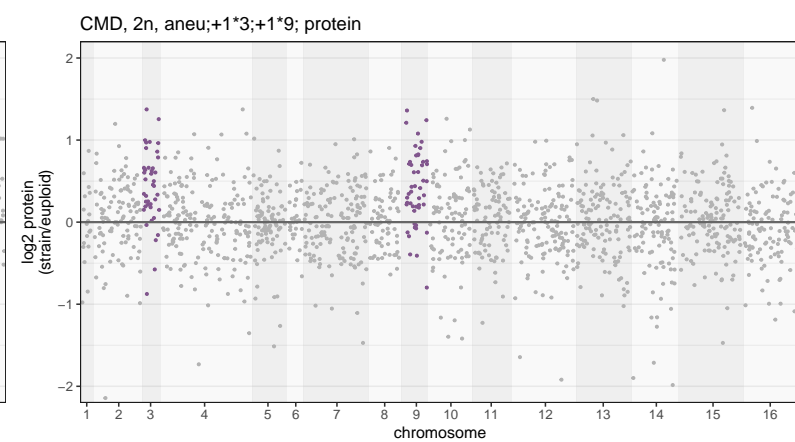
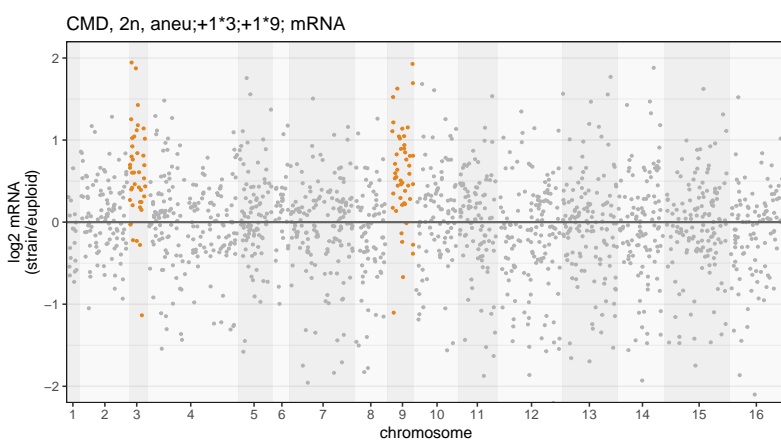
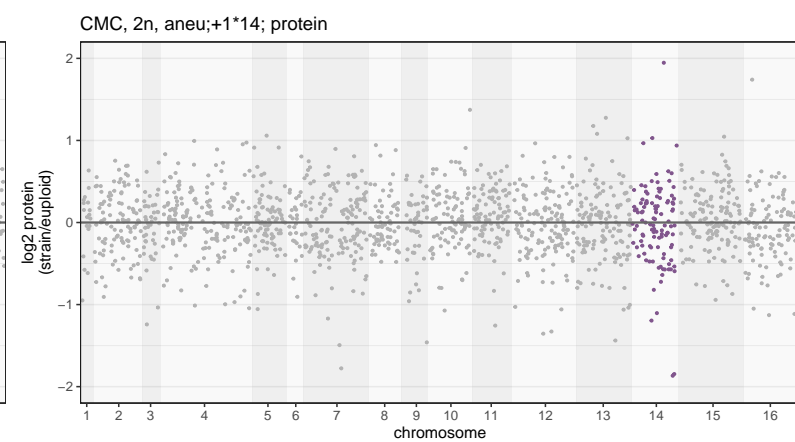
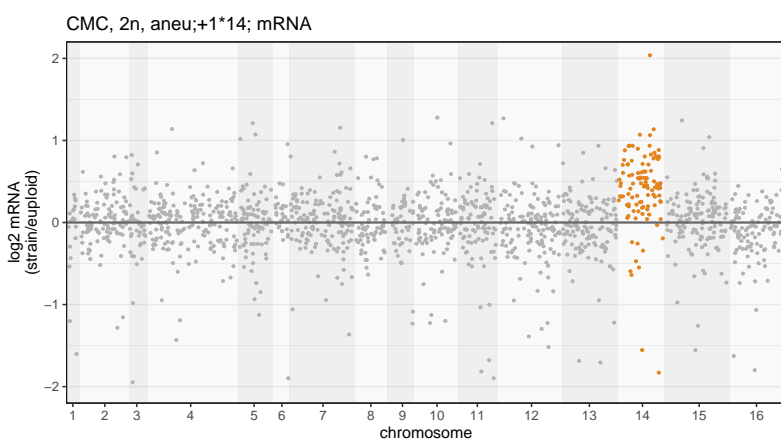
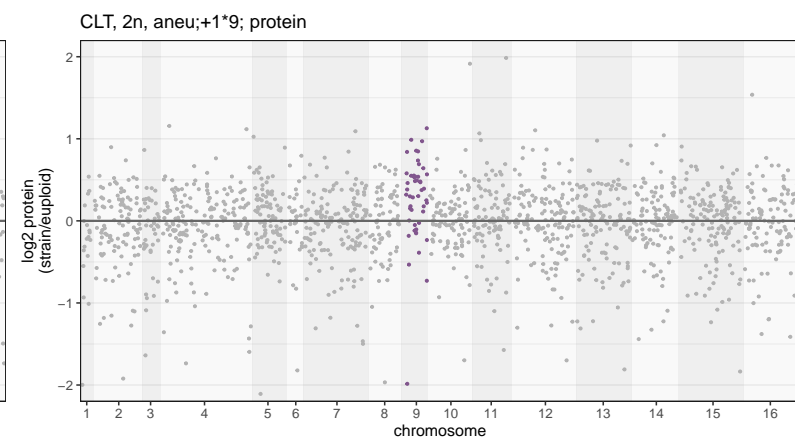
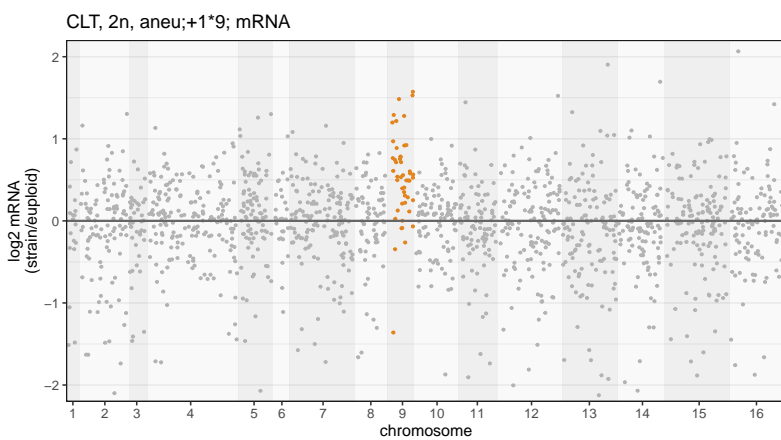
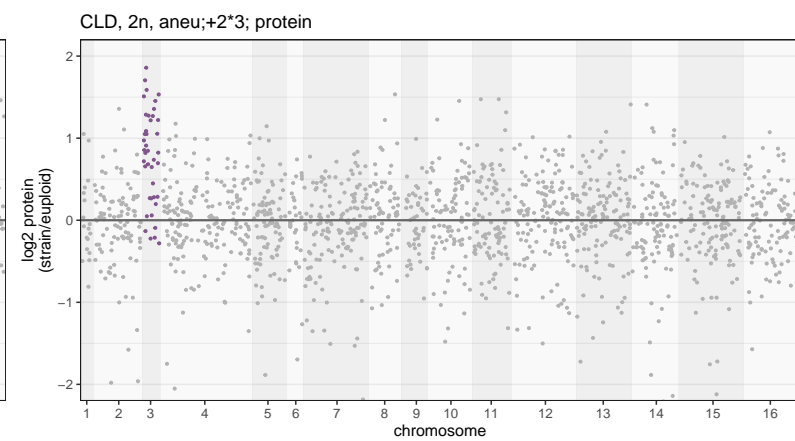
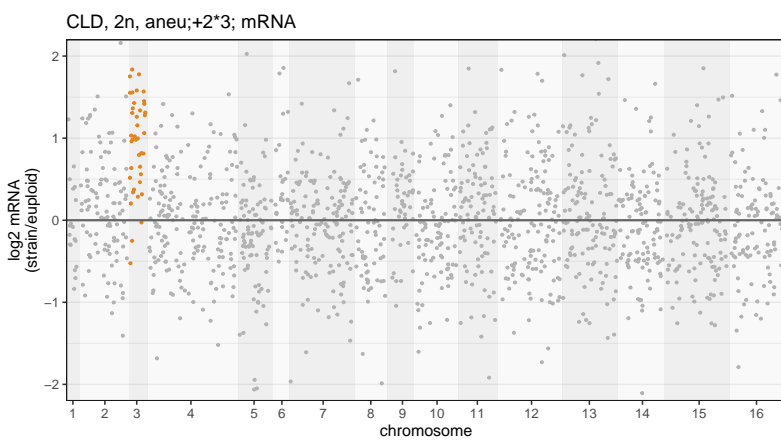
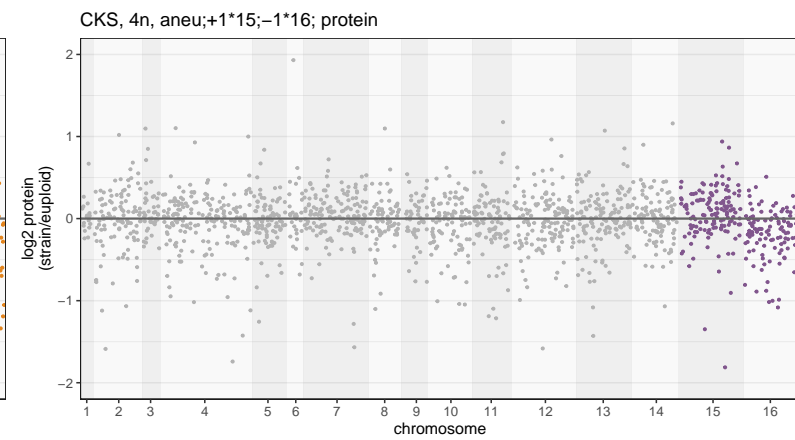
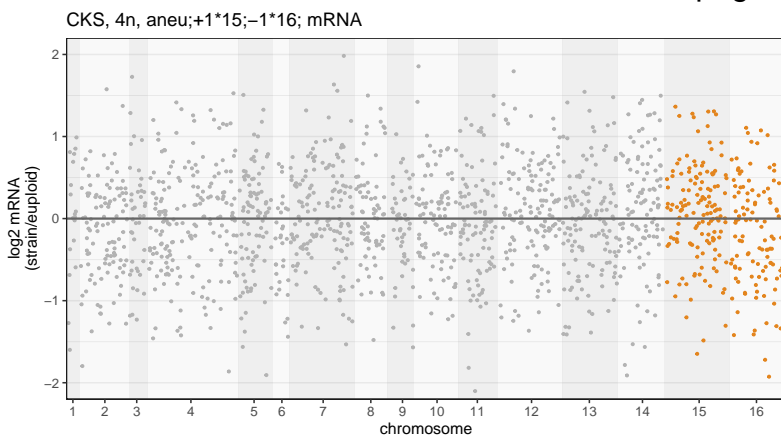


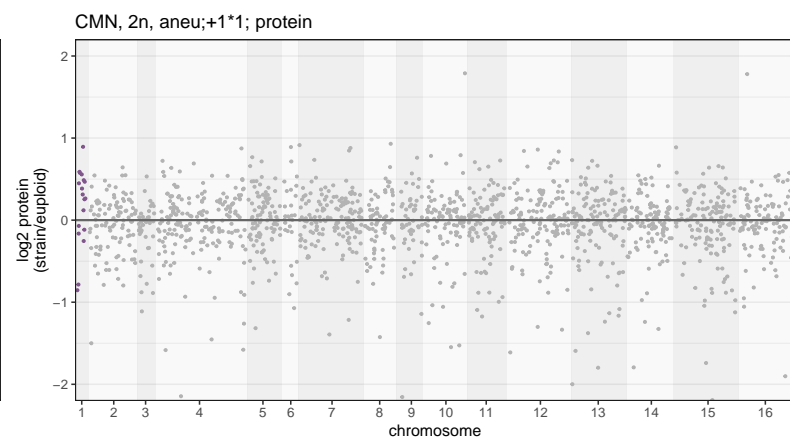
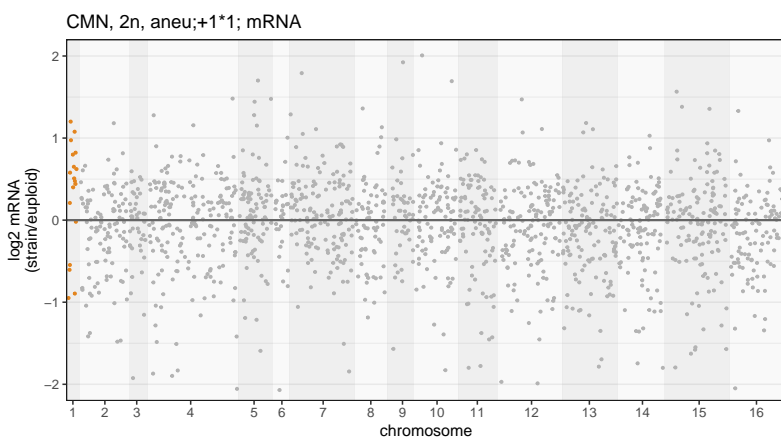
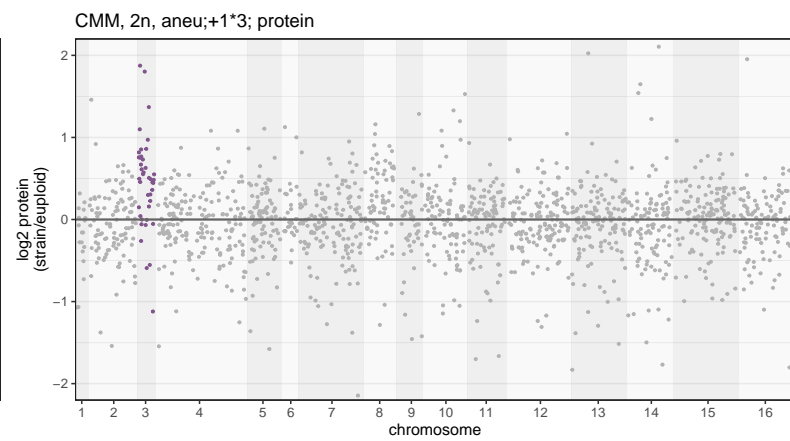
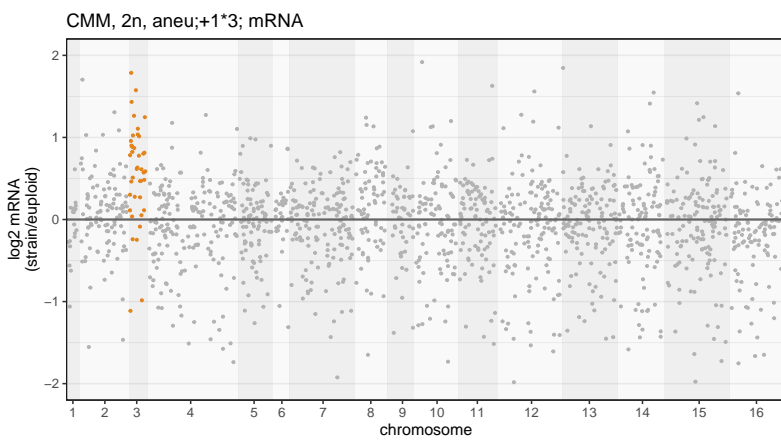
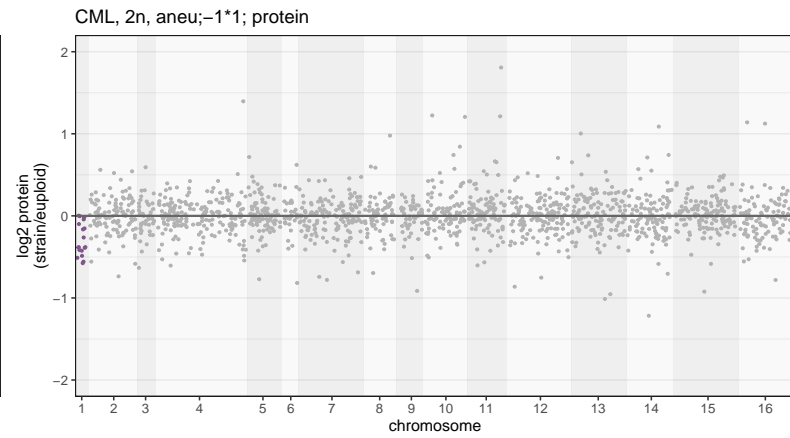
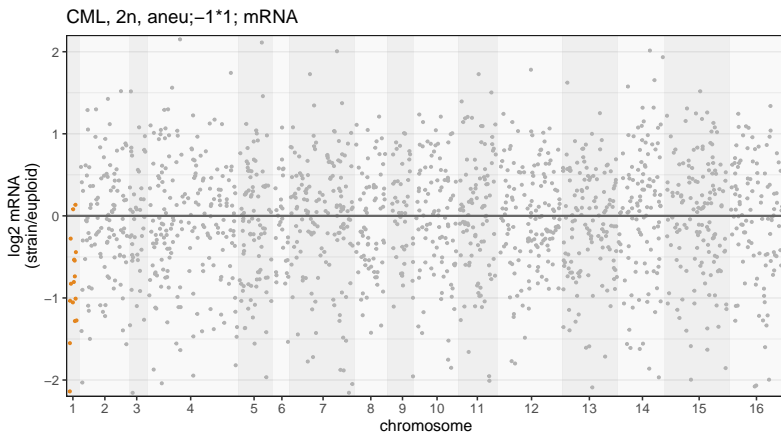
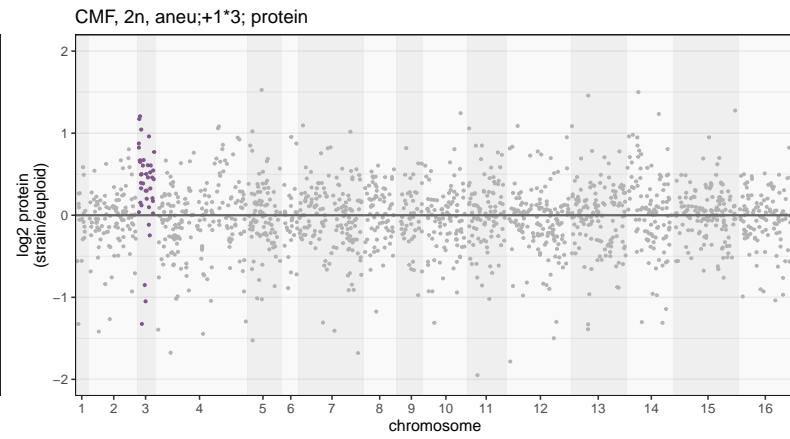
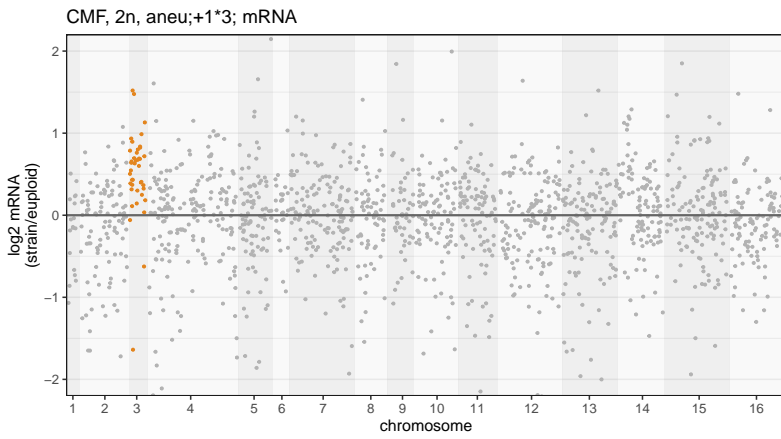
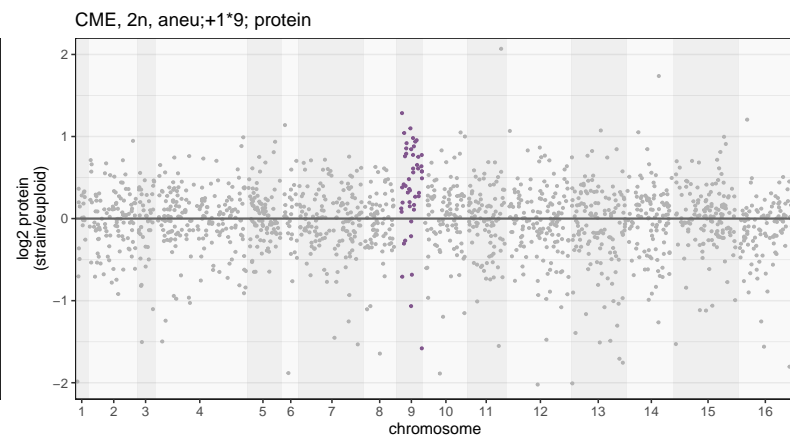
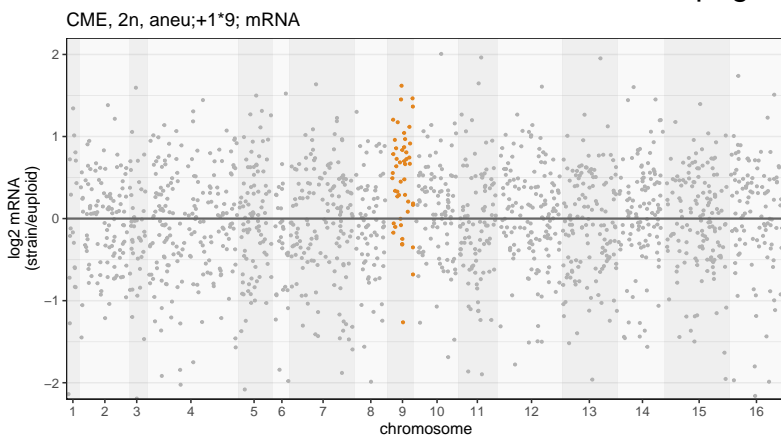


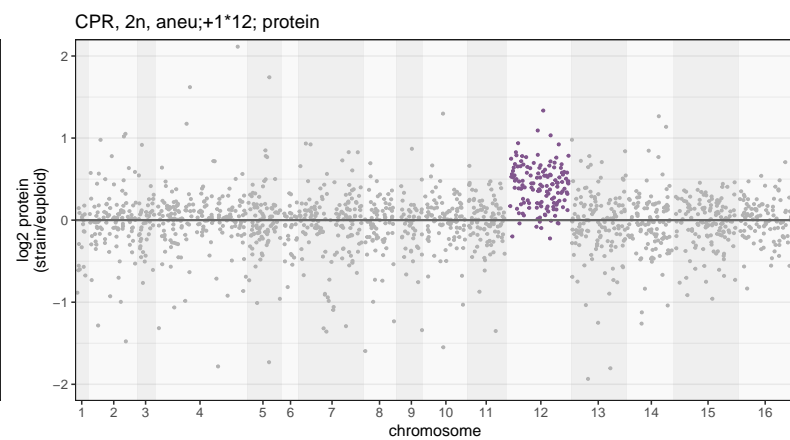
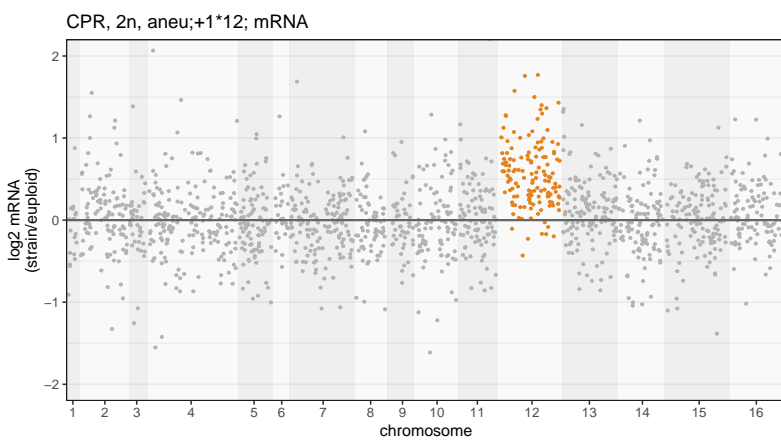
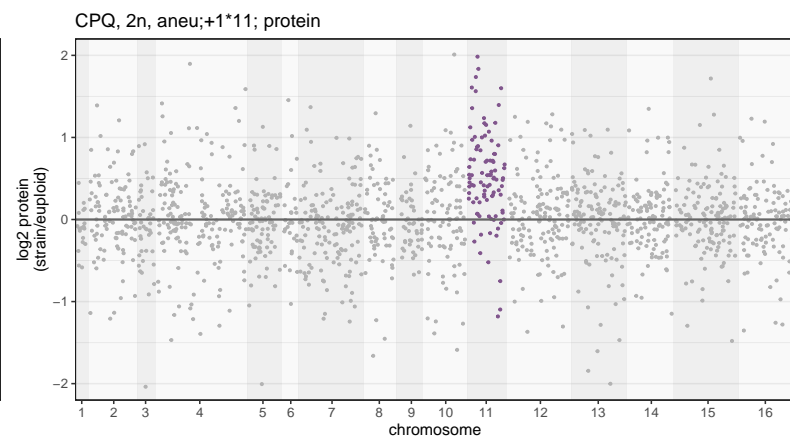
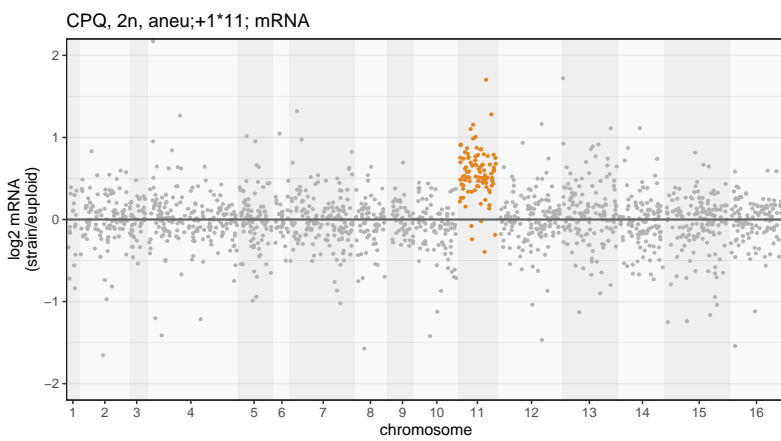
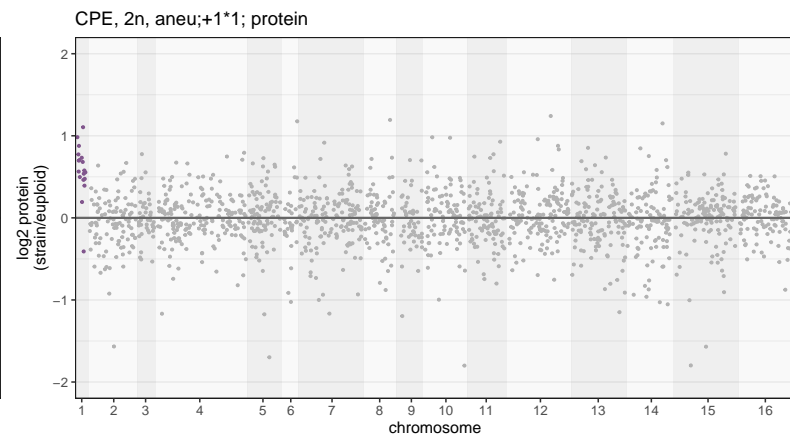
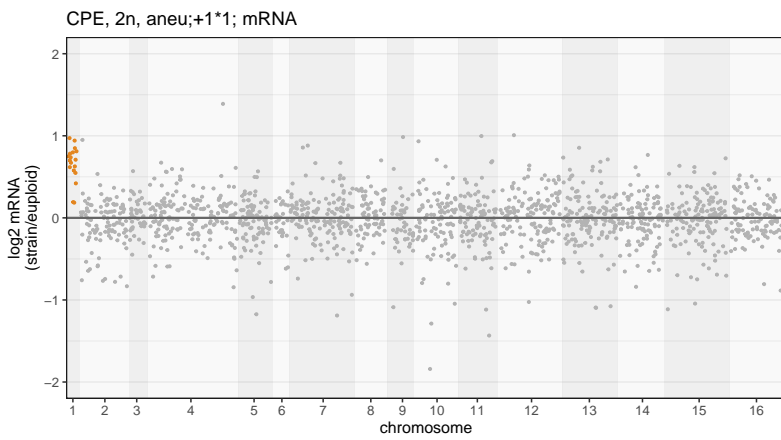
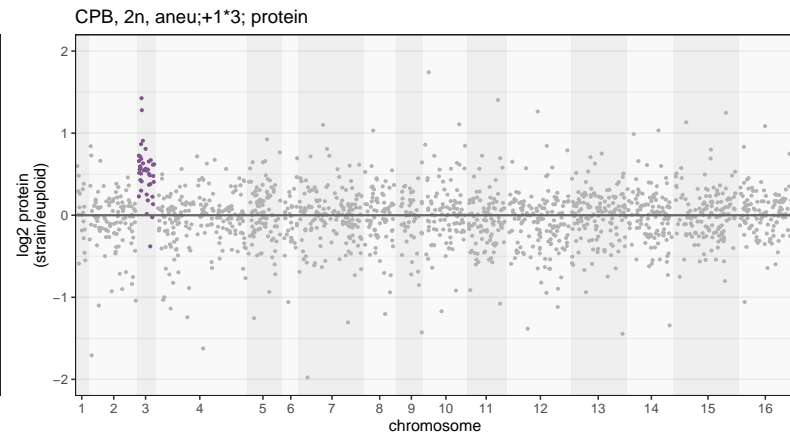
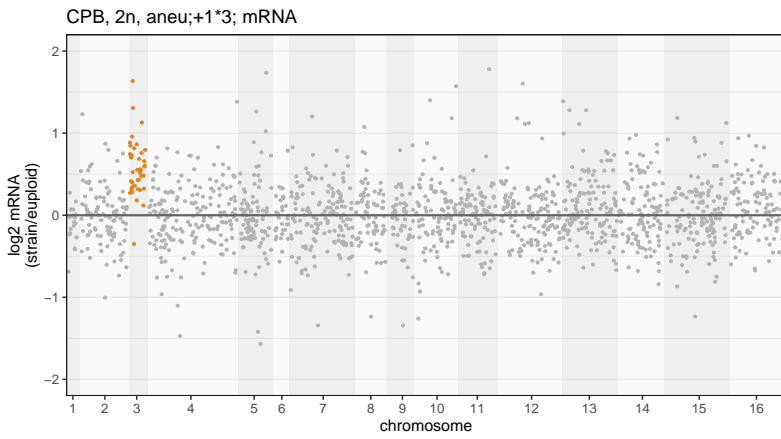
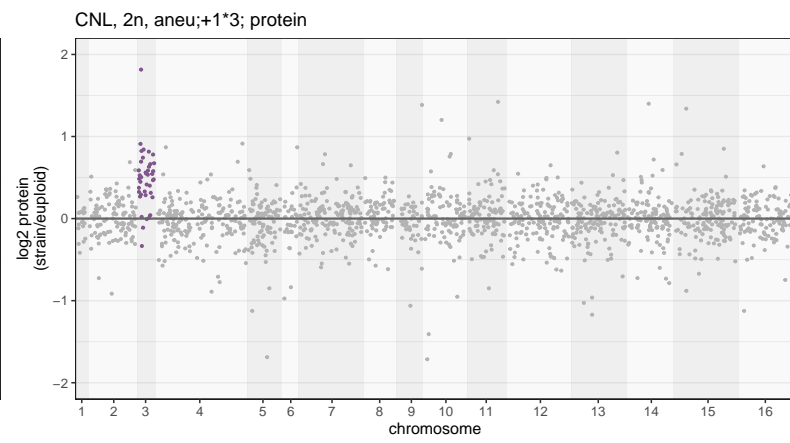
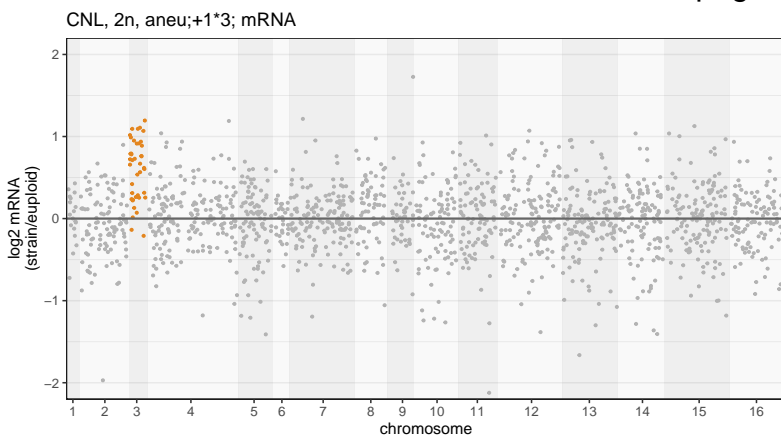


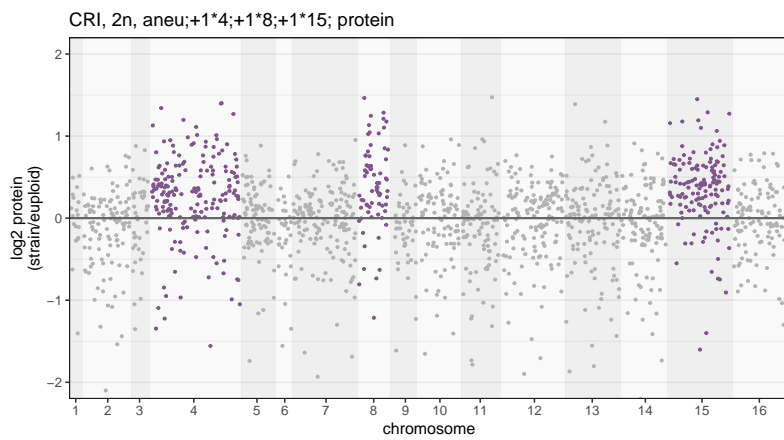
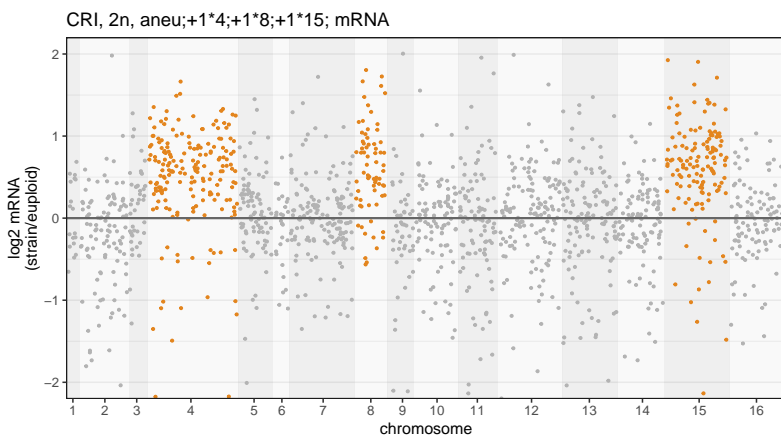
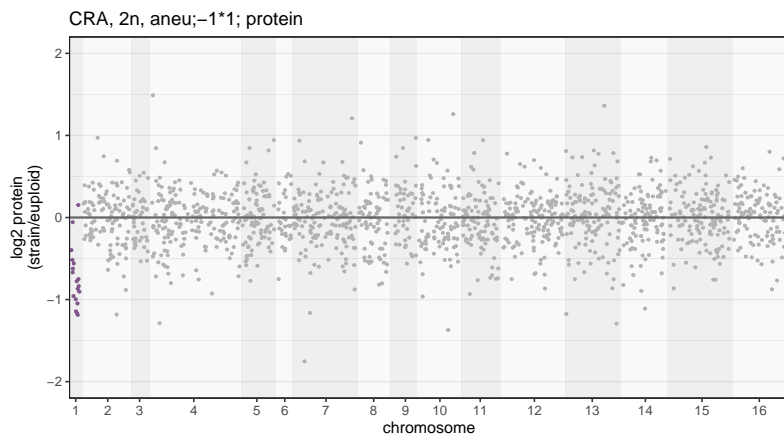
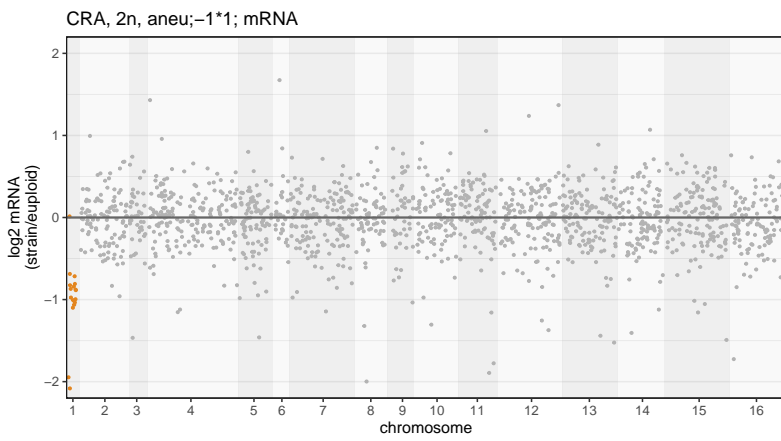
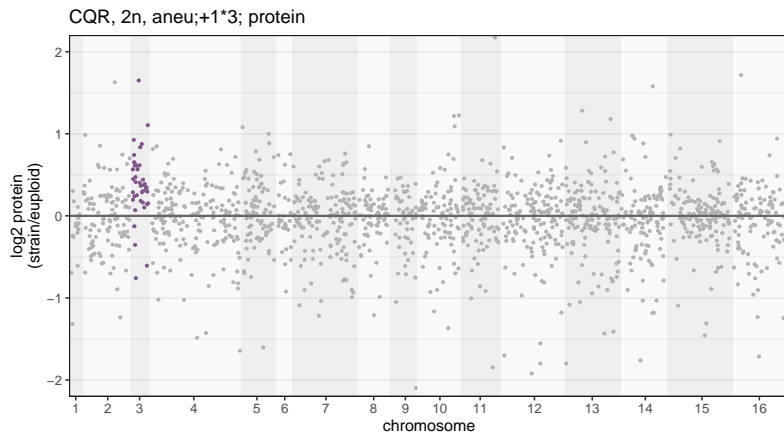
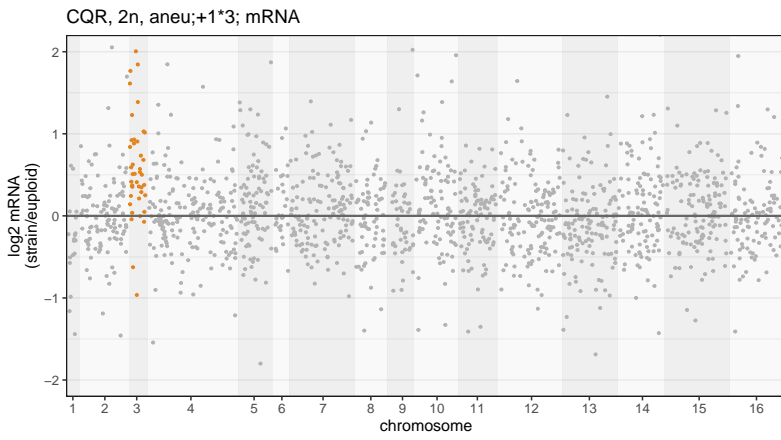
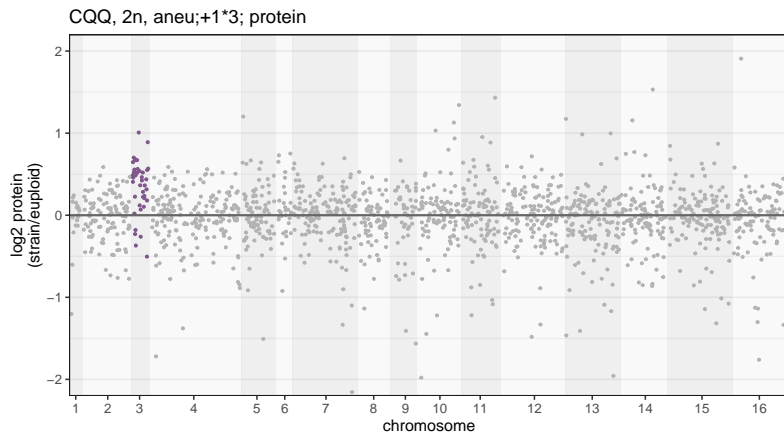
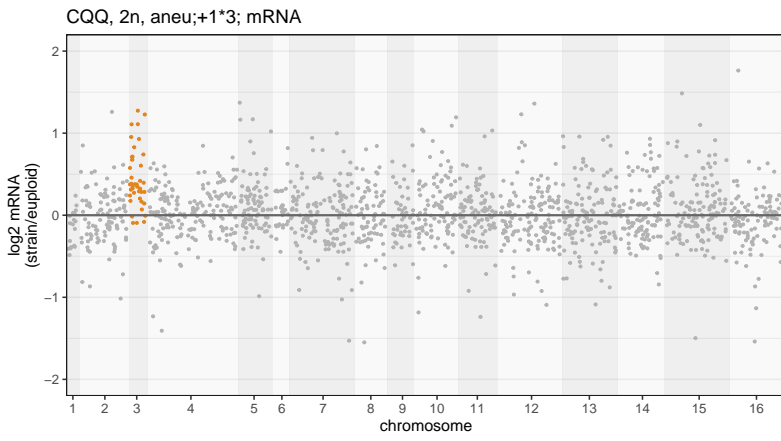
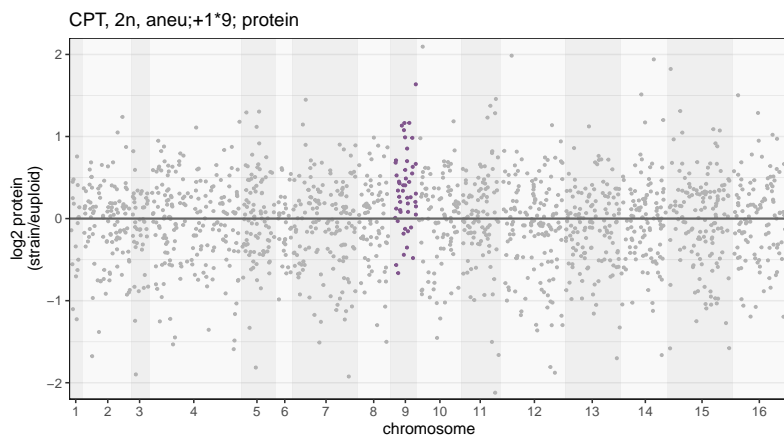
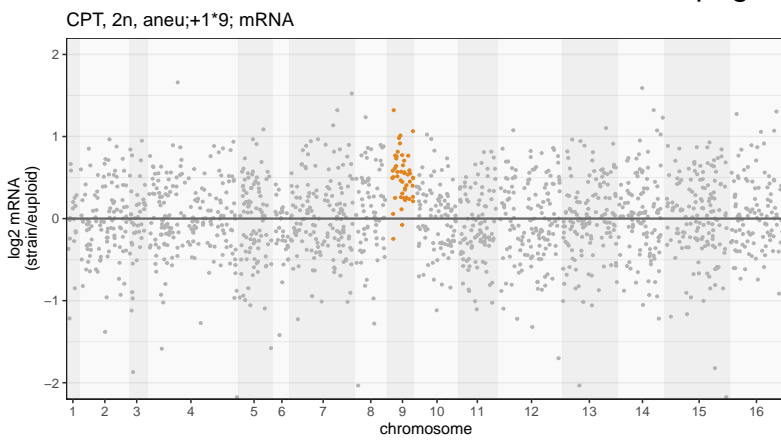












Supplementary Fig. 2, page 22: High-resolution version of the heatmap displayed in Fig. 4a including isolate names.

mRNA

protein

genes

