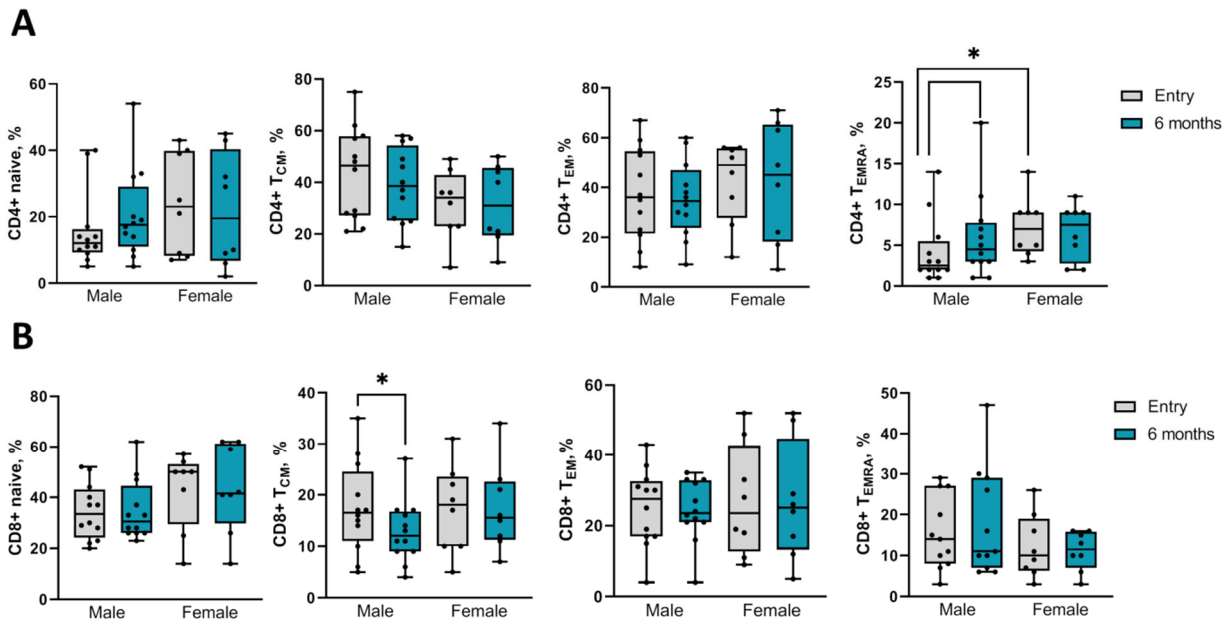


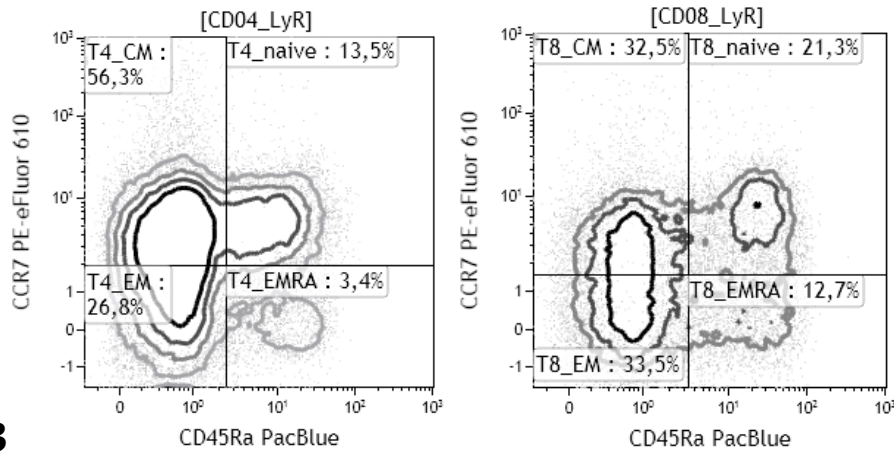
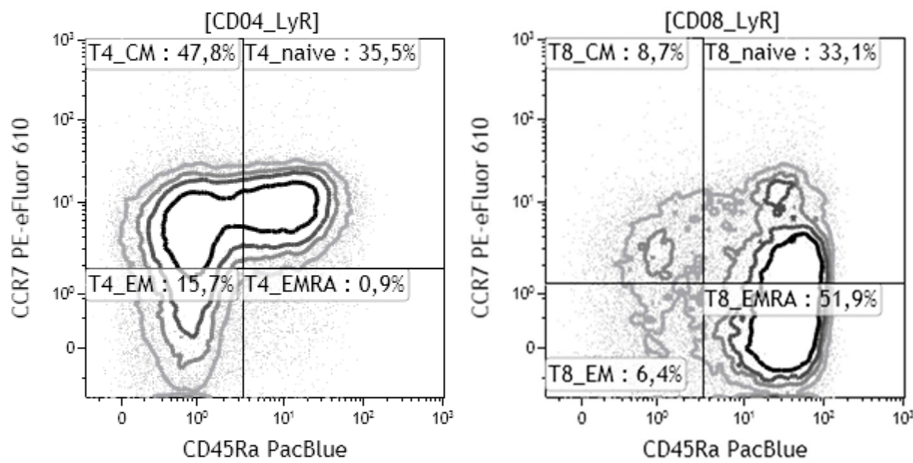
## Supplementary Material



**Supplementary Figure S1.** Comparison of T cell subsets among responders with regard to gender. A – the frequencies of T helper cells among responders before and after renal denervation procedure. B - the frequencies of T cytotoxic cells among responders before and after renal denervation procedure. CD4+ - T helper cells, CD8+ - T cytotoxic cells, T<sub>CM</sub> – central memory cells, T<sub>EM</sub> - effector memory cells, T<sub>EMRA</sub> – effector memory residential cells. \* represent significant difference between the groups with  $p < 0.05$  using unpaired t – test or Mann Whitney test.

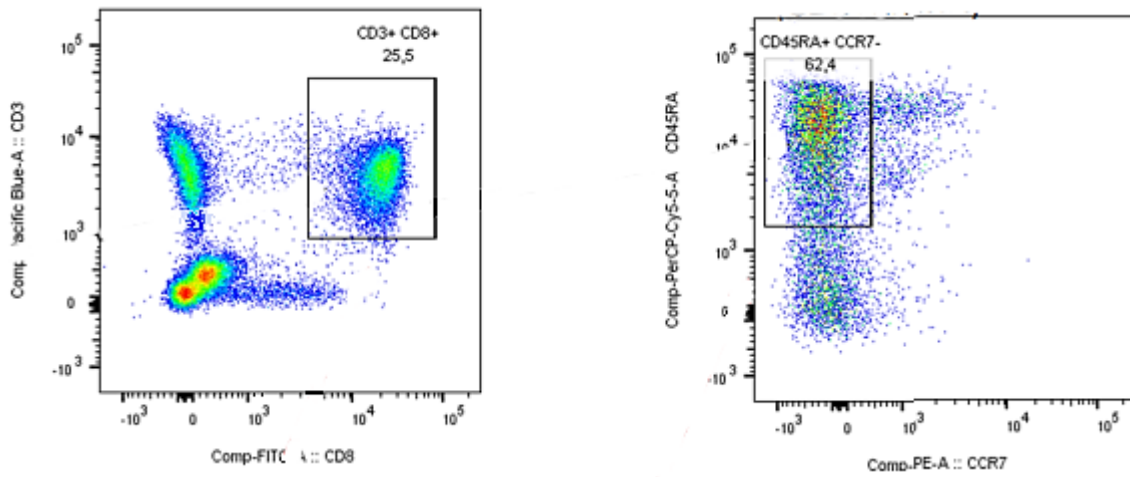
**Supplementary Table S1.** Antibodies used for extracellular and intracellular lymphocyte staining and their specifications.

Antibody	Clone	Ig subclass	Conjugate	Species	Manufacturer	Reference number
<b>Extracellular staining</b>						
CD3	SP34-2	IgG1k	BV786	Mouse	BD Horizon	563918
CD45	HI30	IgG1k	BV650	Mouse	BD Horizon	563717
CD4	SK3	IgG1k	BV605	Mouse	BD Horizon	565998
CD8	SK1	IgG1k	APC A700	Mouse	BD Horizon	565192
CD45RA	2H4	IgG1k	PacificBlue	Mouse	Beckman Coulter	A82946
CCR7	150503	IgG2a	PECF594	Mouse	BD Horizon	562381
<b>Intracellular staining</b>						
CD3	UCHT1	IgG1k	PacificBlue	Mouse	Biolegend	300431
CD8	OKT-8	IgG2ak	FITC	Mouse	eBioscience	11-0086-42
CD45RA	T6D11	IgG2b	PerCP-V700	Mouse	Miltenyi Biotec	130-097-693
CCR7	FR11-11E8	IgG1k	PE	Mouse	Miltenyi Biotec	130-093-621
IFN- $\gamma$	45-15	IgG1k	PE-V770	Mouse	Miltenyi Biotec	130-096-752
TNF- $\alpha$	cA2	IgG1k	APC	Mouse	Miltenyi Biotec	130-117-382

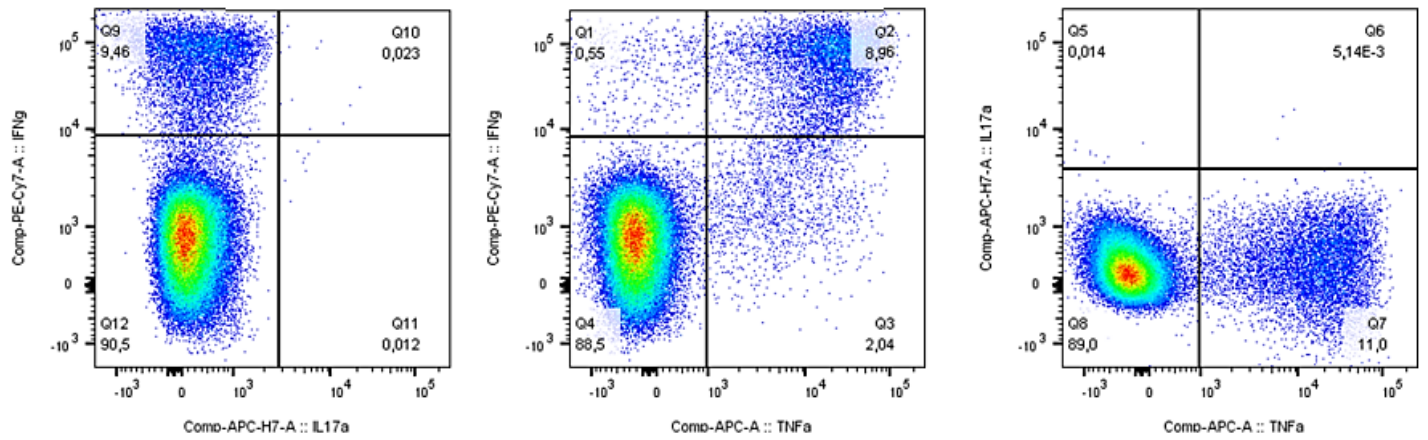
**A****B**

**Supplementary Figure S2.** Gating strategy on T cell memory phenotypes. After identification of CD4<sup>+</sup> and CD8<sup>+</sup> positive lymphocytes, the cells were further analyzed for their CCR7 and CD45Ra expression. Accordingly, the cells were divided into 4 groups: T central memory cells (T<sub>CM</sub>=CD45RA<sup>-</sup>,CCR7<sup>+</sup>), T effector memory cells (T<sub>EM</sub>=CD45RA<sup>-</sup>,CCR7<sup>-</sup>), T effector memory residential cells (T<sub>EMRA</sub>=CD45RA<sup>+</sup>,CCR7<sup>-</sup>) and T naïve cells (CD45RA<sup>+</sup>,CCR7<sup>+</sup>). A – a representative gating of RDN responder. B - a representative gating of RDN non-responder.

**A**



**B**



**Supplementary Figure S3.** Gating strategy on T cell effector memory residential cells and their intracellular cytokines. After identification of CD8<sup>+</sup> positive lymphocytes, the cells were stained with anti-CCR7 and anti-CD45Ra. T effector memory cells (TEMRA) were defined as CD45Ra<sup>+</sup> and CCR7<sup>+</sup> (A). After that, the intracellular cytokines in TEMRA cells were identified using anti-TNF- $\alpha$  and anti-IFN- $\gamma$  staining (B).