









# Serum neurofilament light chain concentration predicts disease worsening in multiple sclerosis

Synne Brune, Einar A Høgestøl , Sigrid A de Rodez Benavent, Pål Berg-Hansen, Mona K Beyer, Ingvild Sørum Leikfoss, Steffan D Bos, Piotr Sowa, Cathrine Brunborg, Magi Andorra , Irene Pulido Valdeolivas , Susanna Asseyer , Alexander Brandt , Claudia Chien , Michael Scheel, Kaj Blennow, Henrik Zetterberg, Nicole Kerlero de Rosbo, Friedemann Paul, Antonio Uccelli , Pablo Villoslada , Tone Berge and Hanne F Harbo

## Abstract

**Background:** Serum neurofilament light (sNfL) chain is a promising biomarker reflecting neuro-axonal injury in multiple sclerosis (MS). However, the ability of sNfL to predict outcomes in real-world MS cohorts requires further validation.

**Objective:** The aim of the study is to investigate the associations of sNfL concentration, magnetic resonance imaging (MRI) and retinal optical coherence tomography (OCT) markers with disease worsening in a longitudinal European multicentre MS cohort.

**Methods:** MS patients ( $n=309$ ) were prospectively enrolled at four centres and re-examined after 2 years ( $n=226$ ). NfL concentration was measured by single molecule array assay in serum. The patients' phenotypes were thoroughly characterized with clinical examination, retinal OCT and MRI brain scans. The primary outcome was disease worsening at median 2-year follow-up.

**Results:** Patients with high sNfL concentrations ( $\geq 8$  pg/mL) at baseline had increased risk of disease worsening at median 2-year follow-up (odds ratio (95% confidence interval)=2.8 (1.5–5.3),  $p=0.001$ ). We found no significant associations of MRI or OCT measures at baseline with risk of disease worsening.

**Conclusion:** Serum NfL concentration was the only factor associated with disease worsening, indicating that sNfL is a useful biomarker in MS that might be relevant in a clinical setting.

**Keywords:** Multiple sclerosis, biomarker, serum neurofilament light chain, magnetic resonance imaging, optical coherence tomography, prognosis

Date received: 9 September 2021; revised: 13 March 2022; accepted: 12 April 2022

## Introduction

Over the last two decades, neurofilament light (NfL) chain has gained increased attention as a promising biomarker in multiple sclerosis (MS). NfL is exclusively expressed in neurons and is released into the extracellular space upon axonal damage.<sup>1</sup> In MS, serum NfL (sNfL) concentrations are associated with increased risk of relapses, higher neurological disability scores, increased magnetic resonance imaging (MRI) disease activity and with more severe brain and spinal cord volume loss.<sup>2–8</sup> Serum NfL concentration is associated with short-term clinical outcomes,<sup>9</sup> but the association with long-term clinical outcomes is less clear.<sup>10</sup>

Optical coherence tomography (OCT) and magnetic resonance imaging (MRI) are other markers of disease

activity in MS. Reduced thickness of the ganglion cell and inner plexiform layer (GCIPL) in the retina has been reported to be associated with future disease activity in MS.<sup>11</sup> Together with MRI scans of the brain and spinal cord, OCT measures can provide useful information for the prediction of long-term disability.<sup>12</sup>

Each of these parameters may individually provide valuable information for elucidating subsequent disease activity. However, the combination of these markers as a predictor for future disease activity in a real-world MS population has not been extensively explored. The aim of this study was to investigate the individual and the potential combined additive value of clinical, sNfL, OCT and MRI measures as markers for subsequent disease activity in a heterogeneous MS patient cohort.

Multiple Sclerosis Journal  
2022, Vol. 28(12) 1859–1870

DOI: 10.1177/  
13524585221097296

© The Author(s), 2022.



Article reuse guidelines:  
sagepub.com/journals-  
permissions

Correspondence to:

**S Brune**  
Neuroscience Research Unit,  
Multiple Sclerosis Research  
Group, Department of  
Neurology, Oslo University  
Hospital, University of Oslo,  
Domus Medica 4, room  
L-254, Gaustadalleen 34,  
0372 Oslo, Norway.  
synne.brune-ingebretsen@  
medisin.uio.no

**Synne Brune**  
Institute of Clinical Medicine,  
University of Oslo, Oslo,  
Norway/Department of  
Neurology, Oslo University  
Hospital, University of Oslo,  
Oslo, Norway.

**Einar A Høgestøl**  
Institute of Clinical  
Medicine, University of Oslo,  
Oslo, Norway/Department of  
Neurology, Oslo University  
Hospital, Oslo, Norway;  
Department of Psychology,  
University of Oslo, Oslo,  
Norway

**Sigrid A de Rodez Benavent**  
Department of  
Ophthalmology, Oslo  
University Hospital, Oslo,  
Norway

**Pål Berg-Hansen**  
Department of Neurology,  
Oslo University Hospital,  
Oslo, Norway

**Mona K Beyer**  
Institute of Clinical  
Medicine, University of  
Oslo, Oslo, Norway/Division  
of Radiology and Nuclear  
Medicine, Oslo University  
Hospital, Oslo, Norway

**Ingvild Sørum Leikfoss**  
Department of Neurology,  
Oslo University Hospital,  
Oslo, Norway/Department  
of Research, Innovation and  
Education, Oslo University  
Hospital, Oslo, Norway

**Steffan D Bos**  
**Hanne F Harbo**  
Institute of Clinical

Medicine, University of Oslo, Oslo, Norway/Department of Neurology, Oslo University Hospital, Oslo, Norway

**Piotr Sowa**  
Division of Radiology and Nuclear Medicine, Oslo University Hospital, Oslo, Norway

**Cathrine Brunborg**  
Oslo Centre for Biostatistics and Epidemiology, Oslo University Hospital, Oslo, Norway

**Magi Andora**  
**Irene Pulido Valdeolivas**  
**Pablo Villoslada**  
Institut d'Investigacions Biomèdiques August Pi Sunyer, Barcelona, Spain

**Susanna Assever**  
Experimental and Clinical Research Center, Max Delbrueck Center for Molecular Medicine and Charité-Universitätsmedizin Berlin, Berlin, Germany

**Alexander Brandt**  
**Claudia Chien**  
**Friedemann Paul**  
Experimental and Clinical Research Center, Max Delbrueck Center for Molecular Medicine and Charité-Universitätsmedizin Berlin, Berlin, Germany/NeuroCure Clinical Research Center, Charité-Universitätsmedizin Berlin, corporate member of Freie Universität Berlin, Humboldt-Universität zu Berlin, and Berlin Institute of Health, Berlin, Germany

**Michael Scheel**  
NeuroCure Clinical Research Center, Charité-Universitätsmedizin Berlin, corporate member of Freie Universität Berlin, Humboldt-Universität zu Berlin, and Berlin Institute of Health, Berlin, Germany/Department of Neurology, Charité-Universitätsmedizin Berlin, corporate member of Freie Universität Berlin, Humboldt-Universität zu Berlin, and Berlin Institute of Health, Berlin, Germany

**Kaj Blennow**  
Clinical Neurochemistry Laboratory, Sahlgrenska University Hospital, Mölndal, Sweden

**Henrik Zetterberg**  
Clinical Neurochemistry Laboratory, Sahlgrenska University Hospital, Mölndal, Sweden/Department of Psychiatry and Neurochemistry, Institute of Neuroscience and Physiology, Sahlgrenska Academy, University of Gothenburg, Mölndal, Sweden/Department of Neurodegenerative Disease, Institute of Neurology,

## Materials and methods

### Study population

A total of 328 MS patients were included at four European MS centres (Hospital Clinic of Barcelona, Spain; Oslo University Hospital, Norway; Charité-Universitätsmedizin Berlin, Germany; and Ospedale Policlinico San Martino, Genoa, Italy) between July 2016 and December 2017 through the ERACOSYSMED ERA-Net programme (Sys4MS project, id:43). All MS patients were invited for a 2-year follow-up visit and 280 of 328 patients were enrolled. The variability of the follow-up duration is illustrated in Supplementary eFigure 1. Complete data sets with sNfL, clinical and imaging measures were obtained from 309 and 226 MS patients at baseline and follow-up, respectively.<sup>13</sup> In addition, serum samples from age- and sex-matched healthy controls (HCs) were collected at the four MS centres (59 at baseline and 30 at follow-up). For all inclusion criteria, please refer to the Supplemental Materials and Methods.

The primary study outcome was disease worsening at median 2-year follow-up, characterized by (1)  $\geq 3$  new cerebral MRI lesions, (2) confirmed Expanded Disability Status Score (EDSS) progression, or (3) evidence of a new clinical relapse,<sup>14</sup> where each component was analysed as a separate outcome parameter. EDSS progression was defined as an increase of (1) 1.5 or more if the EDSS baseline score was zero, (2) 1.0 if the baseline EDSS score was less than 5.5 and (3) 0.5 if the baseline EDSS score was  $\geq 5.5$ .<sup>15</sup>

The Sys4MS project followed the Declaration of Helsinki and was approved by the IRCCS Ospedale Policlinico San Martino, University of Oslo (REC ID: 2011/1846 A), Charité-Universitätsmedizin and Hospital Clinic of Barcelona. All participants provided written informed consent prior to their inclusion in the study.

### Serum NfL chain measurements

Serum NfL concentrations were analysed using the single molecule array immunoassay (Simoa Technology; QUANTERIX, Billerica, MA, USA). See the Supplemental Materials and Methods for further details.<sup>2</sup> Serum NfL percentile values were calculated from HC data ( $n=59$ ) and patients were grouped based on their sNfL concentrations into high ( $\geq 8$  pg/mL;  $\geq 75$ th percentile) or normal ( $< 8$  pg/mL;  $< 75$ th percentile). The use of the 75th percentile cut-off was based on the distribution of MS samples in each percentile category (Supplementary eTable 1). Age-normative

percentile cut-offs were calculated from a second group of HC ( $n=309$ ) (Blennow and Zetterberg, unpublished), dichotomizing patients based on their sNfL concentrations into high ( $\geq 75$ th age-corrected percentile) or normal ( $< 75$ th age-corrected percentile) (Supplementary eTable 2).

### Optical coherence tomography

Retinal OCT scans were obtained by Heidelberg Spectralis (Heidelberg Engineering, GmbH, Germany) or RS-3000 (Nidek CO., LTD., Japan), fulfilled the OSCAR-IB criteria,<sup>16</sup> and were all analysed at the Berlin reading centre. See the Supplemental Materials and Methods for further details.

### Magnetic resonance imaging

MRI acquisition was harmonized across all four centres with minimum requirements for MRI scanners and sequences. Analyses of MRI data were performed at the Berlin reading centre according to a unified pipeline by experienced MRI technicians. See the Supplementary eTable 3 and the Supplemental Materials and Methods for further details.

### Statistical analysis

Statistical analyses were performed using IBM SPSS version 27 for Mac (IBM Corp., Armonk, NY, USA). Descriptive statistics are presented as either mean with standard deviation (SD), or median with range, or proportions. For comparison between groups, the  $t$  test or Mann–Whitney  $U$  test was used for continuous variables and  $\chi^2$  or Fisher's exact test for categorical variables. Linear regression models and partial correlation ( $r_p$ ) analyses were applied to test for associations between sNfL concentrations and clinical, OCT and MRI measurements at both baseline and follow-up, with sNfL and log-transformed sNfL concentrations as the outcome, adjusting for age, sex and treatment level (no treatment, active or highly active treatment). To test whether sNfL, clinical, OCT and MRI measurements could predict disease worsening, or its components, at median 2-year follow-up, univariable and multivariable logistic regression analyses were applied including sNfL concentration  $\geq 8$  pg/mL or above the age-corrected 75th percentile, GCIPL thickness, pRNFL thickness, T2 lesion volume, normalized brain volumes, average time used at Nine-Hole Peg Test (9-HPT), age, and treatment level as covariates in the logistic regression analyses. For the sensitivity analyses, different sNfL percentile cut-offs were used to examine whether the probability of disease worsening increased with each category of

higher sNfL-level percentile. Before performing the multivariable regression analysis, possible multicollinearity of the covariates was explored using a correlation coefficient  $\geq 0.7$  as a limit for multicollinearity. All tests were two-sided and a 5% significance level was used. The  $p$  values were not adjusted for multiple testing. OCT measures were missing in 27% of the patients, and to investigate the possible uncertainty due to missing data in the multivariable logistic regression models with OCT measures, sensitivity analysis of imputation was performed as described in the Supplemental Materials and Methods.

## Results

### *Baseline characteristics*

Demographic and clinical characteristics of the study population are shown in Tables 1–3 and in Supplementary eTable 4. The sNfL concentrations by age are separately presented as scatter plots for HCs and MS patients in Supplementary eFigure 2. Serum NfL concentrations at baseline were significantly higher in patients with progressive MS (PMS) compared with HCs, adjusted for age and sex (Table 2). When subgrouping the patients based on treatment level, our analyses showed that untreated PMS patients had significantly higher sNfL concentrations than the HC group (Supplementary eTable 5 and Supplementary eFigure 3).

### *Association between sNfL and clinical, MRI and OCT measures at baseline and follow-up*

Correlation analyses of log-transformed sNfL concentrations with clinical, MRI and OCT measures at baseline and follow-up are presented in Figure 1 and in Supplementary eTable 6. In the PMS group, higher sNfL concentrations at baseline were significantly associated with slower performance on 9-HPT ( $r_p=0.38$ ,  $p=0.01$ ), lower scores on the symbol digit modalities test (SDMT) ( $r_p=-0.32$ ,  $p=0.03$ ), higher T2 lesion count ( $r_p=0.41$ ,  $p=0.004$ ), and increased T2 lesion volume ( $r_p=0.39$ ,  $p=0.01$ ) at baseline. Furthermore, higher sNfL concentrations at follow-up were significantly associated with higher T2 lesion count ( $r_p=0.36$ ,  $p=0.04$ ) and reduced thickness of GCIPL ( $r_p=-0.52$ ,  $p=0.02$ ) at follow-up among the PMS patients.

In the relapsing-remitting MS (RRMS) group, higher baseline sNfL concentrations were significantly associated with higher T2 lesion count at baseline ( $r_p=0.15$ ,  $p=0.02$ ). In addition, in this patient group higher sNfL concentrations at follow-up were

significantly associated with slower performance on both 9-HPT ( $r_p=0.24$ ,  $p=0.003$ ) and 25-foot walk test (T25FWT) ( $r_p=0.31$ ,  $p<0.001$ ) at follow-up. The presence of new lesions ( $r_p=0.28$ ,  $p<0.001$ ) and increasing lesion volumes ( $r_p=0.21$ ,  $p=0.01$ ) at follow-up significantly correlated with higher concentrations of sNfL at baseline in the RRMS group.

### *Association of sNfL, clinical, MRI and OCT measures with disease worsening*

We then investigated whether high sNfL concentrations at baseline, thinner pRNFL, thinner GCIPL, higher T2 lesion volume, lower normalized total brain volume, slower performance on 9-HPT or DMT category separately were associated with disease worsening at median 2-year follow-up. Patients with high sNfL concentrations ( $\geq 8$  pg/mL) at baseline had higher risk of disease worsening at follow-up (odds ratio (OR) (95% confidence interval (CI))=2.8 (1.5–5.3),  $p=0.001$ ) (Figure 2 and in Supplementary eTable 7). The risk of disease worsening was also significantly increased in the univariable model using the 80th percentile (OR (95% CI)=1.98 (1.02–3.8),  $p=0.043$ ) (Supplementary eTable 8). When analysing the association of sNfL concentrations with single components of disease worsening, patients with high sNfL ( $\geq 8$  pg/mL) at baseline had increased risk of developing new T2 lesions (OR (95% CI)=3.97 (1.7–9.3),  $p=0.002$ ) and of experiencing a new clinical relapse (OR (95% CI)=3.3 (1.38–7.8),  $p=0.007$ ) in the follow-up period, but not of EDSS progression (Table 4). The risk of disease worsening (OR (95% CI)=1.07 (1.01–1.14),  $p=0.027$ ) and of experiencing a new clinical relapse in the follow-up period (OR (95% CI)=1.07 (1.01–1.13),  $p=0.033$ ) was also significantly increased in the univariable models using sNfL as a continuous variable (Table 4). In addition, slower performance on 9-HPT was significantly associated with disease worsening at follow-up (OR (95% CI)=1.09 (1.02–1.17),  $p=0.009$ ). Neither thinner GCIPL nor pRNFL, increased T2 lesion volume nor lower normalized total brain volume showed associations with disease worsening at follow-up. The data indicated that patients with active or highly active treatment had less disease worsening compared with untreated patients.

Since age is the single most important factor impacting sNfL concentrations in HCs,<sup>9</sup> we extended our analyses using age-normative cut-offs. Patients with high sNfL concentrations ( $\geq 75$ th age-corrected percentile) at baseline had higher risk of disease worsening at follow-up (OR (95% CI)=1.8 (1.0–3.12),  $p=0.050$ ) (Supplementary eTable 9). The risk of

University College London, London, UK/UK Dementia Research Institute at UCL, London, UK/Hong Kong Center for Neurodegenerative Diseases, Shatin, Hong Kong, China

**Nicole Kerlero de Rosbo**  
Department of Neuroscience, Rehabilitation, Ophthalmology, Genetics, Maternal and Child Health, University of Genoa, Genoa, Italy

**Antonio Uccelli**  
Department of Neuroscience, Rehabilitation, Ophthalmology, Genetics, Maternal and Child Health, University of Genoa, Genoa, Italy/Center of Excellence for Biomedical Research, University of Genoa, Genoa, Italy/IRCCS Ospedale Policlinico San Martino, Genoa, Italy

**Tone Berge**  
Department of Research, Innovation and Education, Oslo University Hospital, Oslo, Norway/Department of Mechanical, Electronic and Chemical Engineering, Oslo Metropolitan University, Oslo, Norway

**Table 1.** Demographic and clinical features of the study population.

	Baseline		2-year follow-up	
	RRMS ( <i>n</i> =257)	PMS ( <i>n</i> =52)	RRMS ( <i>n</i> =188)	PMS ( <i>n</i> =38)
Age, years, mean (SD)	40.9 (±8.6)	54.1 (±7.4)	42.6 (±8.7)	56.4 (±7.4)
Sex, <i>n</i> (%)				
Female	186 (72.4)	31 (59.6)	137 (73.0)	23 (60.5)
MS classification, <i>n</i> (%)				
CIS	4 (1.6)		3 (1.6)	
RRMS	253 (98.4)		185 (98.4)	
SPMS		24 (46.2)		19 (50.0)
PPMS		28 (53.8)		19 (50.0)
Age at MS onset, mean, years (SD)	30.7 (±8.4)	35.3 (±11.1)		
Disease duration, median, years (range)	8.4 (0.5–34.3)	17.4 (1.4–43.5)		
Follow-up time, median, years (range)			1.9 (0.7–3.4)	2.1 (1.0–2.4)
Follow-up time, mean, years (SD)			1.9 (±0.4)	1.9 (±0.3)
Disease-modifying treatment				
None, <i>n</i> (%)	56 (22.0)	34 (65.0)	32 (18.0)	19 (51.5)
Active treatment, <i>n</i> (%)	130 (50)	7 (14)	81 (45)	3 (8)
Interferon	37 (14.4)	3 (5.8)	13 (7.2)	1 (2.7)
Glatiramer acetate	33 (12.8)	3 (5.8)	19 (10.5)	1 (2.7)
Teriflunomid	27 (10.5)	0 (0)	19 (10.5)	0 (0)
Fumarate	33 (12.8)	1 (1.9)	30 (16.6)	1 (2.7)
Highly active treatment, <i>n</i> (%)	71 (28.0)	11 (21.0)	68 (37.0)	15 (40.5)
Fingolimod	35 (13.6)	2 (3.8)	27 (14.9)	2 (5.4)
Natalizumab	25 (9.7)	1 (1.9)	19 (10.5)	1 (2.7)
Alemtuzumab	8 (3.1)	1 (1.9)	12 (6.6)	0 (0)
Rituximab	1 (0.4)	6 (11.5)	4 (2.2)	4 (10.8)
Ocrelizumab	0 (0)	1 (1.9)	4 (2.2)	8 (21.6)
Daclizumab	2 (0.8)	0 (0)	0 (0)	0 (0)
Cladribine	0 (0)	0 (0)	2 (1.1)	0 (0)

RRMS: relapsing-remitting MS; PMS: progressive MS; MS: multiple sclerosis; SD: standard deviation; CIS: clinically isolated syndrome; SPMS: secondary progressive MS; PPMS: primary progressive MS.  
Descriptive statistics are presented as either mean with standard deviation (SD), or median with range or proportions.

disease worsening was also significantly increased in the univariable models using sNfL concentrations  $\geq 80$ th age-corrected percentile (OR (95% CI)=2.1 (1.2–3.8),  $p=0.009$ ),  $\geq 85$ th age-corrected percentile (OR (95% CI)=2.3 (1.3–4.1),  $p=0.005$ ) and  $\geq 90$ th age-corrected percentile (OR (95% CI)=2.4 (1.3–4.3),  $p=0.005$ ) as cut-offs (Supplementary eTable 10). Patients with high sNfL ( $\geq 75$ th age-corrected percentile) at baseline had increased risk of developing new T2 lesions (OR (95% CI)=2.3 (1.1–4.9),  $p=0.034$ ), but not of experiencing a new clinical relapse or of EDSS progression in the follow-up period. In addition, patients with sNfL  $\geq 80$ th, 85th and 90th age-corrected percentiles at baseline had increased risk of developing new T2 lesions, and

patients with sNfL  $\geq 80$ th and the 85th age-corrected percentiles had increased risk of experiencing a new clinical relapse in the follow-up period.

To analyse whether sNfL, MRI and OCT parameters combined showed stronger associations with disease worsening than each parameter alone, we combined sNfL, MRI and OCT measures in multivariable models. See the Supplemental Results and Supplementary eTables 7 and 9 for further details.

## Discussion

This multicentre, real-life study revealed increased risk of disease worsening after median 2 years in



**Table 2.** Clinical, MRI and OCT measures in the study population.

	Baseline			2-year follow-up								
	HC (n=59)	RRMS (n=257)	PMS (n=52)	p <sup>a</sup>	p <sup>b</sup>	p <sup>c</sup>	HC (n=30)	RRMS (n=188)	PMS (n=38)	p <sup>a</sup>	p <sup>b</sup>	p <sup>c</sup>
sNFL (pg/mL), median (range)	6.0 (2.2–21.6)	6.7 (2.2–93.2)	10.7 (4.2–28.4)	0.12	0.295	<b>0.03</b>	7.1 (3.0–16.2)	6.6 (2.3–45.5)	11.0 (4.3–32.8)	0.101	0.954	0.207
EDSS, median (range)	2.0 (0–6.5)	2.0 (0–6.5)	5.0 (2.0–8.0)	< <b>0.001</b>				1.5 (0–7.0)	6.0 (2–8.0)	< <b>0.001</b>		
9-HPT, median (range)	19.6 (14.4–48.3)	19.6 (14.4–48.3)	25.7 (17.7–49.5)	< <b>0.001</b>				19.7 (14.8–45.3)	26.4 (17.6–59.6)	< <b>0.001</b>		
25FWT, median (range)	4.3 (2.5–71.0)	4.3 (2.5–71.0)	12.1 (4.4–44.0)	< <b>0.001</b>				4.2 (2.3–22.2)	9.4 (5.5–59.8)	< <b>0.001</b>		
SDMT, median (range)	55.0 (20–102)	55.0 (20–102)	41 (14–69)	<b>0.015</b>				53.0 (25–110)	43.5 (23–75)	0.148		
Brain T2 Lesion count, median (range)	25 (1–204)	25 (1–204)	34.5 (4–232)	<b>0.005</b>				27 (0–197)	35 (5–103)	0.4		
Brain T2 Lesion volume, median (range)	3.5 (0.1–64.5)	3.5 (0.1–64.5)	15.0 (0.5–54.1)	< <b>0.001</b>				4.0 (0.1–57.0)	15.2 (0.9–54.4)	< <b>0.001</b>		
Normalized brain volume, mean (SD)	1519.4 (±83.1)	1519.4 (±83.1)	1437.9 (±98.3)	0.099				1460.0 (±65.0)	1411.7 (±79.6)	0.105		
Normalized grey matter volume, mean (SD)	799.82 (±60.95)	799.82 (±60.95)	740.1 (±59.86)	0.218				785.9 (±45.5)	748.8 (±49.6)	0.645		
Normalized white matter volume, mean (SD)	719.8 (±68.4)	719.8 (±68.4)	697.8 (±80.0)	0.368				674.0 (±42.0)	663.0 (±53.0)	<b>0.049</b>		
Thalamus volume, mean (SD)	15.16 (±1.79)	15.16 (±1.79)	13.4 (±2.2)	< <b>0.001</b>				14.9 (±2.4)	13.4 (±2.6)	0.129		
pRNFL non-ON (µm), median (range)	103.3 (77.0–138.9)	103.3 (77.0–138.9)	104.9 (76.8–126.7)	0.98			n=195	104.0 (77.4–151.9)	105.5 (82.2–123.5)	0.748		
GCIPL non-ON (µm), median (range)	67.4 (47.8–85.6)	67.4 (47.8–85.6)	67.5 (53.7–78.3)	<b>0.047</b>			n=207	66.3 (48.5–83.4)	66.5 (45.5–80.5)	0.313		

MRI: magnetic resonance imaging; OCT: optical coherence tomography; HC: healthy control; RRMS: relapsing remitting MS; PMS: progressive multiple sclerosis; sNFL: serum neurofilament light chain; EDSS: Expanded Disability Status Score; 9-HPT: 9-Hole Peg Test; 25FWT: 25 foot walk test; SDMT: symbol digit modalities test; SD: standard deviation; pRNFL non-ON: peripapillary retinal nerve fiber layer thickness in nonoptic neuritis eye; GCIPL non-ON: ganglion cell and inner plexiform layer in nonoptic neuritis eye. Descriptive statistics are presented as either mean with standard deviation (SD), or median with range. The *p* values were derived using linear regression models adjusted for age, sex and treatment level. In bold are shown significant *p* values. The *p* values were not adjusted for multiple testing.

<sup>a</sup>*p* = *p* value for the RRMS vs PMS comparison.  
<sup>b</sup>*p* = *p* value for the HC vs RRMS comparison.  
<sup>c</sup>*p* = *p* value for the HC vs PMS comparison.

**Table 3.** Demographic and clinical features of patients with disease worsening.

	Patients with disease worsening ( <i>n</i> =87)	Patients without disease worsening ( <i>n</i> =109)
Age, years, mean (SD)	42.9 ( $\pm$ 9.8)	41.9 ( $\pm$ 9.7)
Sex, <i>n</i> (%)		
Female	55 (63.2)	86 (78.9)
MS classification, <i>n</i> (%)		
CIS	2 (2.3)	2 (1.8)
RRMS	64 (73.6)	97 (89.0)
SPMS	10 (11.5)	8 (7.3)
PPMS	11 (12.6)	2 (1.8)
Age MS onset, years, mean (SD)	31.4 ( $\pm$ 9.1)	30.5 ( $\pm$ 8.5)
Disease duration, years, median (range)	8.9 (0.5–43.5)	8.6 (0.5–34.7)
Follow-up time, years, median (range)	2.0 (0.95–3.38)	1.9 (0.7–2.72)
Disease-modifying treatment		
None, <i>n</i> (%)	29 (33.3)	22 (20.2)
Active treatment, <i>n</i> (%)	36 (41.4)	50 (45.9)
Interferon	12 (33.3)	11 (22.0)
Glatiramer acetate	10 (27.8)	8 (16.0)
Teriflunomid	6 (16.7)	14 (28.0)
Fumarate	8 (22.2)	17 (34.0)
Highly active treatment, <i>n</i> (%)	22 (25.3)	37 (33.9)
Fingolimod	10 (45.5)	16 (43.2)
Natalizumab	7 (31.8)	13 (35.1)
Alemtuzumab	2 (9.1)	5 (13.5)
Rituximab	2 (9.1)	2 (5.4)
Ocrelizumab	1 (4.5)	0 (0)
Daclizumab	0 (0)	1 (2.7)
sNfL (pg/mL) median (range)	8.4 (2.8–93.2)	6.7 (2.7–33.3)
sNfL $\geq$ 75th percentile <sup>a</sup> , <i>n</i> (%)	49 (56.3)	46 (42.2)
sNfL $\geq$ 8 pg/mL, <i>n</i> (%)	49 (56.3)	36 (33.0)
$\geq$ 3 new cerebral MRI lesions, <i>n</i> (%)	34 (39.1)	0 (0)
EDSS progression, <i>n</i> (%)	39 (44.8)	0 (0)
Relapse, <i>n</i> (%)	33 (37.9)	0 (0)

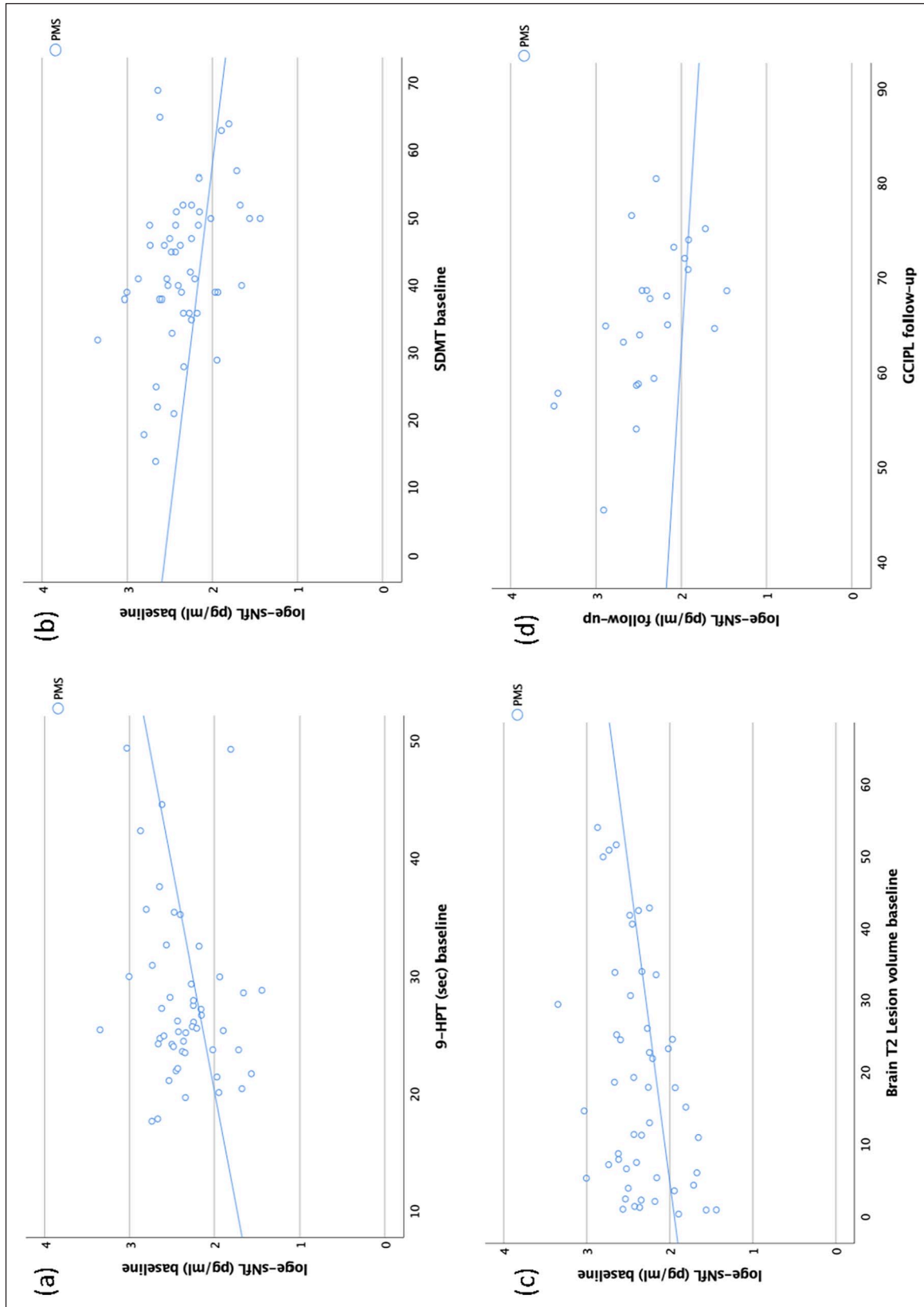
SD: standard deviation; CIS: clinically isolated syndrome; RRMS: relapsing-remitting MS; SPMS: secondary progressive MS; PPMS: primary progressive MS; MRI: magnetic resonance imaging; EDSS: Expanded Disability Status Score; MS: multiple sclerosis.

Disease worsening =  $\geq$ 3 new cerebral MRI lesions and/or confirmed EDSS progression and/or evidence of a new clinical relapse. Descriptive statistics are presented as either mean with standard deviation (SD), or median with range or proportions.

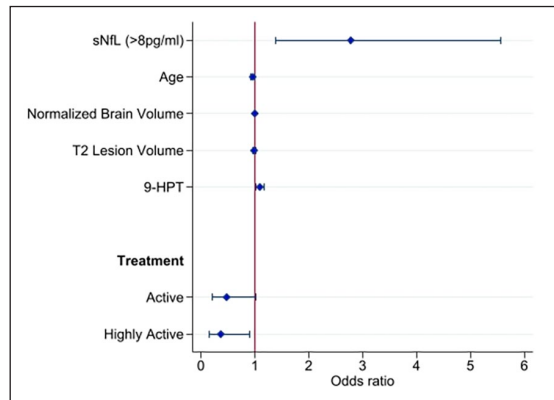
<sup>a</sup>Cut-off 75th percentile: 20–29 years  $\geq$  4.325 pg/mL, 30–34 years  $\geq$  6.60 pg/mL, 35–39 years  $\geq$  7.05 pg/mL, 40–44 years  $\geq$  6.825 pg/mL, 45–49 years  $\geq$  7.075 pg/mL, 50–54 years  $\geq$  8.225 pg/mL, 55–59 years  $\geq$  11.15 pg/mL, 60–69 years  $\geq$  12.95 pg/mL.

patients with elevated sNfL concentrations at baseline. The association between sNfL concentration and disease worsening was first explored using a pre-specified cut-off ( $\geq$ 8 pg/mL). These analyses revealed a 2.8-fold increased risk of disease worsening, a 4.0-fold increased risk of new T2 lesions and a 3.3-fold increased risk of relapse activity after 2 years. There was a trend, although not statistically significant, for a positive association between high sNfL at baseline and the risk of EDSS progression at follow-up.

Defining age-normative cut-offs in this analysis was not possible due to limited number of HCs (*n*=59) that were analysed at the same time as the patient samples. We then explored the association between sNfL concentration and disease worsening using age-normative cut-offs ( $\geq$ 75th percentile) based on a second group of HCs (*n*=309). This analysis revealed a 1.8-fold increased risk of disease worsening, gradually increasing using a higher percentile as cut-off. The risk of new MRI lesions and a new relapse in the



**Figure 1.** Scatter plots depicting the association (partial correlations) between log-transformed sNfL concentrations and clinical, radiological and OCT parameters at baseline or follow-up. (a) sNfL concentration at baseline and 9-HPT at baseline in patients with PMS ( $r_p/p=0.38/0.01$ ). (b) sNfL concentration at baseline and SDMT at baseline in patients with PMS ( $r_p/p=-0.32/0.03$ ). (c) sNfL concentration at baseline and brain T2 lesion volume at baseline in patients with PMS ( $r_p/p=-0.52/0.02$ ). (d) sNfL concentration at follow-up and GCIPL at follow-up in patients with PMS ( $r_p/p=0.39/0.01$ ). sNfL: serum neurofilament light chain; RRMS: relapsing remitting multiple sclerosis; PMS: progressive multiple sclerosis; 9-HPT: 9HolePegTest; SDMT: symbol digit modalities test; GCIPL: ganglion cell and inner plexiform layer;  $r_p$ : partial correlation coefficient (corrected for age, sex and treatment level). The  $p$  values were not adjusted for multiple testing.



**Figure 2.** A forest plot depicting the multivariable logistic regression model 2 for disease progression at 2-year follow-up. No treatment (odds ratio=1.0) is used as a reference category for treatment. sNfL: serum neurofilament light chain; 9-HPT: 9HolePegTest.

follow-up period was also evident in these analyses using age-normative cut-offs. Finally, the risk of disease worsening, and of experiencing a new clinical relapse in the follow-up period, was also significantly increased in the analysis using sNfL as a continuous variable. Our study showed no independent association between MRI or OCT measures and disease worsening. Overall, sNfL was the only factor associated with disease worsening in this patient population.

Disanto et al.<sup>2</sup> have previously reported that patients with sNfL concentrations above the 80th HCs-based percentiles at baseline had higher risk of relapses and EDSS worsening after 3 years, supporting our findings. This was confirmed in another cohort,<sup>8</sup> where the probability of EDSS worsening gradually increased with higher sNfL percentile categories. A recent study by Kuhle et al.<sup>17</sup> demonstrated that the combination of sNfL concentration and brain atrophy provided a more robust prediction for long-term disease progression than sNfL concentrations alone, whereas Zimmermann et al. reported that the presence of both high sNfL and thin GCIPL was a stronger risk factor for future disease activity than each parameter individually.<sup>18</sup> We found no additive effect of sNfL, MRI and OCT measures as risk factors for disease worsening. Of note, the patients followed by Kuhle et al. were not using highly active treatment and their outcome measure was long-term disease progression measured after 8 or 15 years. In contrast, our patient population was mainly treated with active or highly active DMTs and had low disability scores, and disease worsening was measured only after 2 years. The observed association between disease worsening and high sNfL concentration, but not with MRI

measures in our patient population, is possibly due to high sensitivity for sNfL as a biomarker of ongoing neuro-axonal degeneration even in early stages of the disease,<sup>19</sup> as opposed to cerebral atrophy, which advances more slowly over time and is more pronounced in later stages of the disease course.<sup>12,20,21</sup>

Our cross-sectional analyses confirm previous reports stating that sNfL concentrations are associated with clinical disability and cognitive performance, the number of T2 lesions, T2 lesion volume and the presence of new T2 lesions.<sup>2,5,22,23</sup> However, we found no significant associations between sNfL and normalized brain volume measures, in contrast to what was observed by Barro et al.<sup>8</sup> One explanation for this could be that our patient population had lower disability scores at baseline and were treated with more highly effective DMTs. In addition, the follow-up time was relatively short.

Previous studies have demonstrated higher sNfL concentrations in MS patients in general compared with HCs, but we found no significant differences in sNfL concentrations between RRMS patients and HCs in our cohort. This could also be because we have included well-treated patients where DMT reduces neuro-axonal damage and thereby lowers sNfL release. In contrast, we found that untreated PMS patients had significantly higher sNfL concentrations compared with HCs. Interestingly, PMS patients on active or highly active treatment had comparable sNfL concentrations with HCs, suggesting that DMT might also influence the pathological processes in PMS patients. These results need to be interpreted with caution because of the low number of PMS patients on active or highly active treatment. However, this hypothesis is supported by other studies showing that NfL concentrations both in serum and in cerebrospinal fluid (CSF) are reduced after initiating DMT in PMS.<sup>24,25</sup>

Our study did not identify significant associations between sNfL and GCIPL or pRNFL at baseline, but we found a significant correlation between sNfL and GCIPL at follow-up among the PMS patients. OCT studies in MS show that GCIPL parameters are often affected early in the disease course even in patients without previous optic neuritis.<sup>26</sup> This is interpreted as a sign of the ongoing neurodegenerative process. When the disease activity develops further, the pRNFL may also be affected. Increased sNfL levels reflecting neuro-axonal retinal damage might be more pronounced in later and more progressive stages of the disease and may not be evident among RRMS



**Table 4.** Univariable models for disease worsening, or its components individually, age adjusted.

	Disease worsening ( <i>n</i> = 196)			≥3 new cerebral MRI lesions ( <i>n</i> = 205)			EDSS progression ( <i>n</i> = 206)			Relapse ( <i>n</i> = 177)		
	OR	95% CI	<i>p</i> value	OR	95% CI	<i>p</i> value	OR	95% CI	<i>p</i> value	OR	95% CI	<i>p</i> value
sNFL ≥ 75th (NFL ≥ 8.0 pg/mL)	<b>2.8</b>	<b>1.49–5.31</b>	<b>0.001</b>	<b>3.97</b>	<b>1.7–9.3</b>	<b>0.002</b>	1.84	0.85–3.96	0.121	<b>3.3</b>	<b>1.38–7.81</b>	<b>0.007</b>
sNFL ≥ 75th <sup>a</sup>	<b>1.8</b>	<b>1.00–3.12</b>	<b>0.050</b>	<b>2.3</b>	<b>1.1–4.9</b>	<b>0.034</b>	1.201	0.6–2.4	0.61	1.978	0.914–4.281	0.083
sNFL (pg/mL, continuous)	<b>1.07</b>	<b>1.01–1.14</b>	<b>0.027</b>	1.05	0.99–1.09	0.069	1.01	0.97–1.05	0.57	<b>1.07</b>	<b>1.01–1.13</b>	<b>0.033</b>
Age <sup>b</sup>	1.01	0.98–1.04	0.455	0.99	0.95–1.02	0.417	1.03	0.99–1.07	0.07	0.98	0.95–1.02	0.43
Brain T2 Lesion volume	1.01 ( <i>n</i> = 195)	0.98–1.04	0.559	1.01	0.97–1.04	0.803	1.00 ( <i>n</i> = 205)	0.97–1.04	0.79	1.00 ( <i>n</i> = 176)	0.96–1.04	0.93
Normalized brain volume	1.00 ( <i>n</i> = 194)	0.99–1.00	0.89	<b>1.01 (<i>n</i> = 204)</b>	<b>1.00–1.01</b>	<b>0.033</b>	0.99 ( <i>n</i> = 204)	0.99–1.003	0.37	1.00 ( <i>n</i> = 175)	0.99–1.01	0.69
GCIFL non-ON, continuous	1.03 ( <i>n</i> = 154)	0.99–1.07	0.161	1.03 ( <i>n</i> = 161)	0.98–1.09	0.23	1.02 ( <i>n</i> = 161)	0.97–1.08	0.36	0.99 ( <i>n</i> = 140)	0.94–1.05	0.911
pRNFL non-ON, continuous	0.99 ( <i>n</i> = 147)	0.97–1.02	0.67	1.01 ( <i>n</i> = 155)	0.98–1.04	0.63	0.99 ( <i>n</i> = 155)	0.95–1.02	0.43	0.98 ( <i>n</i> = 134)	0.94–1.02	0.26
9-HPT (per 1 second)	<b>1.09 (<i>n</i> = 190)</b>	<b>1.02–1.17</b>	<b>0.009</b>	1.05 ( <i>n</i> = 198)	0.98–1.12	0.15	1.03 ( <i>n</i> = 199)	0.97–1.09	0.28	<b>1.12 (<i>n</i> = 174)</b>	<b>1.03–1.2</b>	<b>0.005</b>
No treatment	1			<b>1</b>			1					
Active treatment	0.55 ( <i>n</i> = 196)	0.27–1.13	0.103	1.03 ( <i>n</i> = 205)	0.42–2.5	0.95	0.51 ( <i>n</i> = 206)	0.21–1.22	0.13	1.02 ( <i>n</i> = 177)	0.42–2.48	0.97
Highly active treatment	0.46 ( <i>n</i> = 196)	0.21–1.0	0.056	0.52 ( <i>n</i> = 205)	0.18–1.16	0.25	1.12 ( <i>n</i> = 206)	0.45–2.8	0.80	<b>0.24 (<i>n</i> = 177)</b>	<b>0.07–0.88</b>	<b>0.031</b>

MRI: magnetic resonance imaging; EDSS: Expanded Disability Status Score; OR: odds ratio; CI: confidence interval; sNFL: serum neurofilament light chain; GCIFL non-ON: ganglion cell and inner plexiform layer in nonoptic neuritis eye; pRNFL non-ON: peripapillary retinal nerve fiber layer thickness in nonoptic neuritis eye; 9-HPT: 9HolePegTest.

Disease worsening = ≥3 new cerebral MRI lesions and/or confirmed EDSS progression and/or evidence of a new clinical relapse. Results are presented with OR, 95% CI and *p* value. Significant *p* values as well as the corresponding OR and CI are shown in bold. The *p* values were not adjusted for multiple testing.

<sup>a</sup>Cut-off 75th percentile: 20–29 years ≥ 4.325 pg/mL, 30–34 years ≥ 6.60 pg/mL, 35–39 years ≥ 7.05 pg/mL, 40–44 years ≥ 6.825 pg/mL, 45–49 years ≥ 7.075 pg/mL, 50–54 years ≥ 8.225 pg/mL, 55–59 years ≥ 11.15 pg/mL, 60–69 years ≥ 12.95 pg/mL.

<sup>b</sup>Not age adjusted.

patients using efficient DMT.<sup>27</sup> This could explain why there was only an association between sNfL and GCIPL in PMS patients in our cohort and not among stable RRMS patients.

A strength of this study is the large MS patient population recruited through a prospective longitudinal European MS-specialized multicentre study. To our knowledge, this is the first study to investigate the associations of sNfL, clinical, MRI and OCT measures with disease worsening in a real-world MS patient population. One limitation of the study is the short follow-up of our cohort. Our results are indicative of the short-term prognosis, but may not be informative for the long-term prognosis of MS.

### Conclusion

This study showed that high sNfL concentration was associated with disease worsening in a real-world MS population. We conclude that sNfL is a promising biomarker in MS that might be relevant in a clinical setting.

### Acknowledgements

We thank all the participating MS patients and healthy controls, Ingrid Mo and Fernanda Kropf for their help with the laboratory work at Oslo University Hospital, all research optometrists and MRI technicians contributing with the data collection at the four centres and Manuela Tan who has carefully gone through the manuscript for grammatical errors.

### Data Availability Statement

Anonymized data not published within this article will be made available by request from any qualified investigator. Raw data will be available at the MultipleMS database ([www.multipleMS.eu](http://www.multipleMS.eu)).

### Declaration of Conflicting Interests

The author(s) declared the following potential conflicts of interest with respect to the research, authorship and/or publication of this article: S.B. has received honoraria for lecturing from Biogen and Novartis. E.A.H. received honoraria for lecturing and advisory board activity from Biogen, Merck and Sanofi Genzyme and unrestricted research grant from Merck. S.A.d.R.B. has received honoraria for lecturing from Teva and an unrestricted grant from Odd Fellows. P.B.-H. has received advisory board and/or speaker honoraria from Novartis, UCB, Sanofi, Merck and Biogen Idec. M.K.B. has received honoraria for lecturing from Novartis and Biogen Idec and served on the advisory board for Biogen. I.S.L. has received unrestricted research grants from Biogen.


S.D.B. reports no disclosures. P.S. has received honoraria for lecturing and travel support from Merck. C.B. reports no disclosures. M.A. is currently an employee of Roche, all the work in this paper is based on his previous work at IDIBAPS. He holds stock from Bionure Farma SL, Attune Neurosciences, Inc. and Goodgut SL. I.P.V. has received travel reimbursement from Roche Spain, Novartis and Genzyme-Sanofi, and she is founder and holds stock in Aura Robotics SL. She is employee at UCB Pharma since July 2020 and all the work in this paper is based on her previous work at IDIBAPS. S.A. received a conference grant from Celgene and honoraria for lecturing from Alexion, Bayer and Roche. A.B. is cofounder and shareholder of Nocturne GmbH and Motognosis GmbH. He is named as inventor on several patent applications and patents describing multiple sclerosis serum biomarkers, motion analysis and retinal image analysis. C.C. has received honoraria for lecturing from Bayer and research grants from Novartis. M.S. has received funding unrelated to this work from German Research Foundation, Federal Ministry of Education and Research and Federal Ministry for Economic Affairs and Energy. He is holding patents for 3D printing of computed tomography models and is shareholder of PhantomX GmbH. K.B. has served as a consultant, at advisory boards, or at data monitoring committees for Abcam, Axon, Biogen, JOMDD/Shimadzu. Julius Clinical, Lilly, MagQu, Novartis, Roche Diagnostics, and Siemens Healthineers, and is a co-founder of Brain Biomarker Solutions in Gothenburg AB (BBS), which is a part of the GU Ventures Incubator Program. H.Z. has served at scientific advisory boards for Eisai, Denali, Roche Diagnostics, Wave, Samumed, Siemens Healthineers, Pinteon Therapeutics, Nervgen, AZTherapies and CogRx; has given lectures in symposia sponsored by Cellectricon, Fujirebio, Alzecure and Biogen; and is a co-founder of Brain Biomarker Solutions in Gothenburg AB (BBS), which is a part of the GU Ventures Incubator Program. N.K.d.R. reports no disclosures. F.P. received honoraria and research support from Alexion, Bayer and Biogen. A.U. has received personal compensation from Novartis, Biogen, Merck, Roche and Sanofi Genzyme for public speaking and advisory boards. A.U. received funding for research by Fondazione Italiana Sclerosi Multipla, the Italian Ministry of Health and Banco San Paolo. P.V. received consultancy fees and holds stocks from Accure Therapeutics SL, Spiral Therapeutics Inc., Clight Inc., Neuroprex Inc., QMenta Inc. and Attune Neurosciences Inc. T.B. has received unrestricted research grants from Biogen and Sanofi Genzyme. H.F.H. has received honoraria for lecturing or advice from Biogen Merck, Roche, Novartis and Sanofi.

## Funding

The author(s) disclosed receipt of the following financial support for the research, authorship, and/or publication of this article: This work was supported by the European Commission (ERACOSYSMED ERA-Net programme, Sys4MS project, id:43), Instituto de Salud Carlos III, Spain (AC150005<sup>2</sup>), the Italian Ministry of Health (WFR-PER-2013-02361136), the German Ministry of Science (Deutsches Teilprojekt B Förderkennzeichen: 031L0083B), the Norwegian Research Council (project 257955), the South-Eastern Norway Regional Health Authority (project 1019111) and Biogen Norway.

## ORCID iDs


Einar A Høgestøl  <https://orcid.org/0000-0001-8446-2111>


Magi Andora  <https://orcid.org/0000-0002-0491-3144>

Irene Pulido Valdeolivas  <https://orcid.org/0000-0003-0188-2458>

Susanna Asseyer  <https://orcid.org/0000-0001-6289-1791>

Alexander Brandt  <https://orcid.org/0000-0002-9768-014X>

Claudia Chien  <https://orcid.org/0000-0001-8280-9513>

Antonio Uccelli  <https://orcid.org/0000-0002-2008-6038>

Pablo Villoslada  <https://orcid.org/0000-0002-8735-6119>

## Supplemental Material

Supplemental material for this article is available online.

## References

- Teunissen CE and Khalil M. Neurofilaments as biomarkers in multiple sclerosis. *Mult Scler* 2012; 18: 552–556.
- Disanto G, Barro C, Benkert P, et al. Serum neurofilament light: A biomarker of neuronal damage in multiple sclerosis. *Ann Neurol* 2017; 81: 857–870.
- Gunnarsson M, Malmstrom C, Axelsson M, et al. Axonal damage in relapsing multiple sclerosis is markedly reduced by natalizumab. *Ann Neurol* 2011; 69(1): 83–89.
- Hakansson I, Tisell A, Cassel P, et al. Neurofilament light chain in cerebrospinal fluid and prediction of disease activity in clinically isolated syndrome and relapsing-remitting multiple sclerosis. *Eur J Neurol* 2017; 24(5): 703–712.
- Lycke JN, Karlsson JE, Andersen O, et al. Neurofilament protein in cerebrospinal fluid: A potential marker of activity in multiple sclerosis. *J Neurol Neurosurg Psychiatry* 1998; 64(3): 402–404.
- Malmstrom C, Haghghi S, Rosengren L, et al. Neurofilament light protein and glial fibrillary acidic protein as biological markers in MS. *Neurology* 2003; 61: 1720–1725.
- Piehl F, Kockum I, Khademi M, et al. Plasma neurofilament light chain levels in patients with MS switching from injectable therapies to fingolimod. *Mult Scler* 2018; 24(8): 1046–1054.
- Barro C, Benkert P, Disanto G, et al. Serum neurofilament as a predictor of disease worsening and brain and spinal cord atrophy in multiple sclerosis. *Brain* 2018; 141: 2382–2391.
- Benkert P, Meier S, Schaedelin S, et al. Serum neurofilament light chain for individual prognostication of disease activity in people with multiple sclerosis: A retrospective modelling and validation study. *Lancet Neurol* 2022; 21(3): 246–257.
- Bittner S, Oh J, Havrdová EK, et al. The potential of serum neurofilament as biomarker for multiple sclerosis. *Brain* 2021; 144: 2954–2963.
- Zimmermann HG, Knier B, Oberwahrenbrock T, et al. Association of retinal ganglion cell layer thickness with future disease activity in patients with clinically isolated syndrome. *JAMA Neurol* 2018; 75: 1071–1079.
- De Stefano N, Airas L, Grigoriadis N, et al. Clinical relevance of brain volume measures in multiple sclerosis. *CNS Drugs* 2014; 28(2): 147–156.
- Polman CH, Reingold SC, Banwell B, et al. Diagnostic criteria for multiple sclerosis: 2010 revisions to the McDonald criteria. *Ann Neurol* 2011; 69(2): 292–302.
- Wattjes MP, Rovira A, Miller D, et al. Evidence-based guidelines: MAGNIMS consensus guidelines on the use of MRI in multiple sclerosis – Establishing disease prognosis and monitoring patients. *Nat Rev Neurol* 2015; 11(10): 597–606.
- Maysam EN, Eid C, Khoury SJ, et al. ‘No evidence of disease activity’: Is it an aspirational therapeutic goal in multiple sclerosis? *Mult Scler Relat Disord* 2020; 40: 101935.
- Schippling S, Balk LJ, Costello F, et al. Quality control for retinal OCT in multiple sclerosis: Validation of the OSCAR-IB criteria. *Mult Scler* 2015; 21(2): 163–170.
- Kuhle J, Plavina T, Barro C, et al. Neurofilament light levels are associated with long-term outcomes in

- multiple sclerosis. *Mult Scler* 2020; 26(13): 1691–1699.
18. Lin TY, Vitkova V, Asseyer S, et al. Increased serum neurofilament light and thin ganglion cell-inner plexiform layer are additive risk factors for disease activity in early multiple sclerosis. *Neurol Neuroimmunol Neuroinflamm* 2021; 8(5): e1051.
  19. Khalil M, Teunissen CE, Otto M, et al. Neurofilaments as biomarkers in neurological disorders. *Nat Rev Neurol* 2018; 14(10): 577–589.
  20. De Stefano N, Giorgio A, Battaglini M, et al. Assessing brain atrophy rates in a large population of untreated multiple sclerosis subtypes. *Neurology* 2010; 74: 1868–1876.
  21. Fisher E, Lee JC, Nakamura K, et al. Gray matter atrophy in multiple sclerosis: A longitudinal study. *Ann Neurol* 2008; 64: 255–265.
  22. Kuhle J, Kropshofer H, Haering DA, et al. Blood neurofilament light chain as a biomarker of MS disease activity and treatment response. *Neurology* 2019; 92: e1007–e1015.
  23. Jakimovski D, Zivadinov R, Ramanathan M, et al. Serum neurofilament light chain level associations with clinical and cognitive performance in multiple sclerosis: A longitudinal retrospective 5-year study. *Mult Scler* 2020; 26(13): 1670–1681.
  24. Axelsson M, Malmstrom C, Gunnarsson M, et al. Immunosuppressive therapy reduces axonal damage in progressive multiple sclerosis. *Mult Scler* 2014; 20(1): 43–50.
  25. Romme Christensen J, Ratzer R, Bornsen L, et al. Natalizumab in progressive MS: Results of an open-label, phase 2A, proof-of-concept trial. *Neurology* 2014; 82: 1499–1507.
  26. Oberwahrenbrock T, Ringelstein M, Jentschke S, et al. Retinal ganglion cell and inner plexiform layer thinning in clinically isolated syndrome. *Mult Scler* 2013; 19(14): 1887–1895.
  27. Oberwahrenbrock T, Schippling S, Ringelstein M, et al. Retinal damage in multiple sclerosis disease subtypes measured by high-resolution optical coherence tomography. *Mult Scler Int* 2012; 2012: 530305.