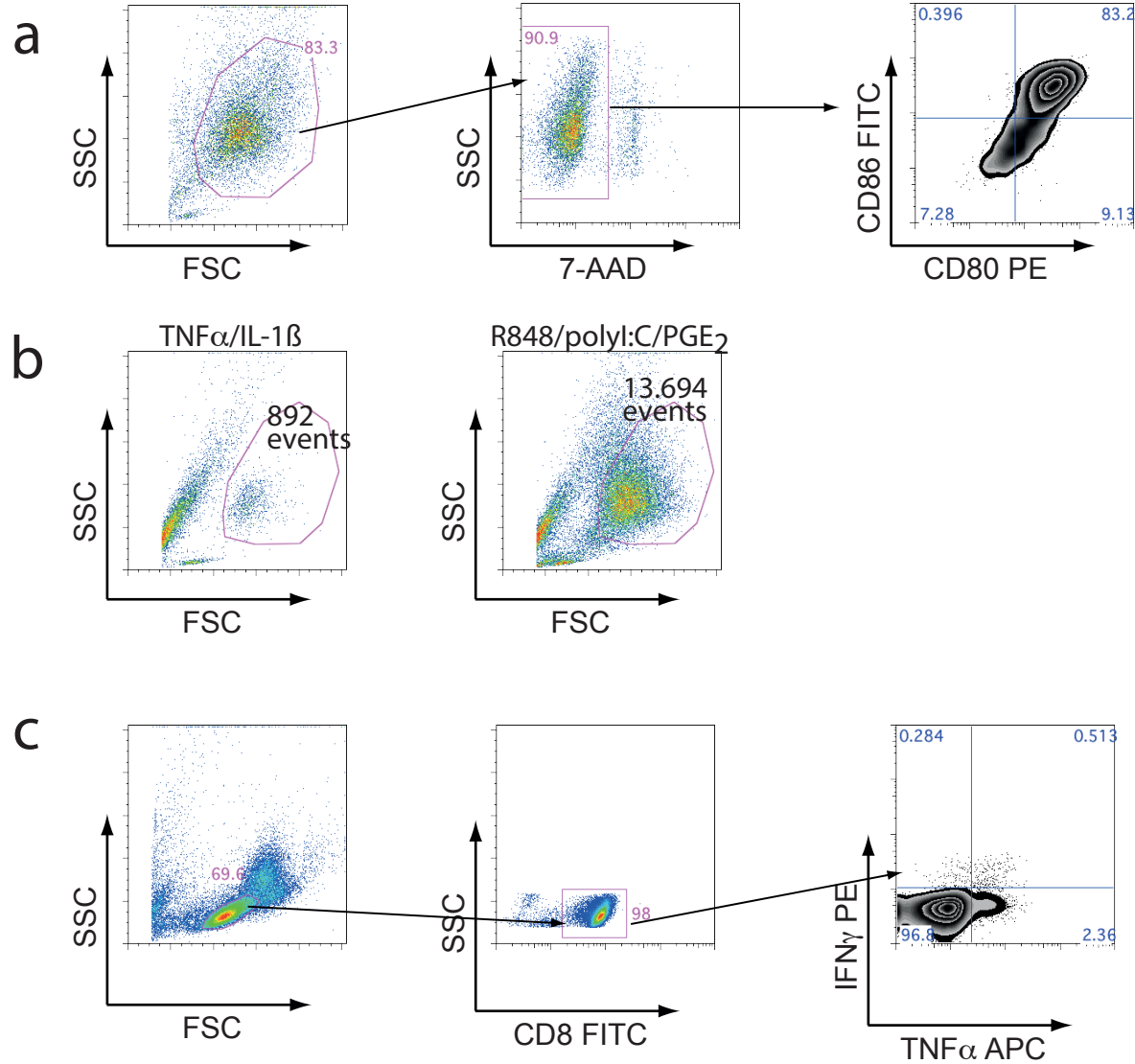


Supplementary Figure 1



Supplementary Figure 1:

Gating strategies for different flow cytometry analyses. (a) Gating strategy for analyzing DC phenotypes in Fig. 1. After identifying DCs in a $SSC^{hi}FSC^{hi}$ gate, dead cells were removed by 7-AAD exclusion. 7-AAD^{neg} events were plotted for the respective marker combinations. (b) Gating strategy for counting and phenotyping migrated DCs from the lower chamber of transwell plates in a $SSC^{hi}FSC^{hi}$ gate for Fig. 2a-c. (c) Gating strategy for Fig. 3c: after identifying lymphocytes in $SSC^{low}FSC^{low}$ and gating on $SSC^{low}CD8^{+}$, cytokine producing cells were determined in zebra plots using quadrant statistics.