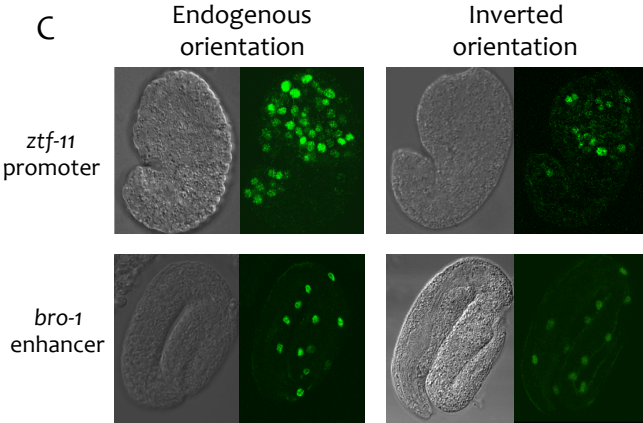


Figure 2 - figure supplement 6

A

gene	chr	tested region start	tested region end	length	Annotation	Reference
daz-1	II	5455759	5456289	552	prom	Merritt et al, 2008
gld-1	I	7695164	7695660	527	txn initiation	Merritt et al, 2008
him-3	IV	6977138	6977484	372	prom	Merritt et al, 2008
mex-5	IV	13353211	13353674	486	prom	Merritt et al, 2008
msp-56	IV	9841000	9841495	513	prom	Merritt et al, 2008
pgl-3	V	4755287	4755970	709	prom	Merritt et al, 2008
spe-11	I	5332434	5332187	272	no txn	Merritt et al, 2008
spn-4	V	6784847	6785394	544	prom	Merritt et al, 2008
fbf-1	II	6080676	6081758	1114	prom	Merritt et al, 2008
tag-243	III	4687158	4687357	199	prom	Hunt-Newbury et al, 2007
atp-2	III	5228403	5228199	204	no element	Hunt-Newbury et al, 2007
him-4	X	9717247	9717573	326	no element	Hunt-Newbury et al, 2007
lgc-34	II	526514	526671	157	prom	Hunt-Newbury et al, 2007
daf-5	II	14040184	14040697	514	prom + enh	Chen et al 2014
egrh-1	X	14840974	14841376	403	prom	Chen et al 2014
eif-3b	II	14794905	14795250	346	prom	Chen et al 2014
F58D5.5	I	12039662	12040186	525	prom	Chen et al 2014
hlh-11	III	9619057	9619496	440	prom	Chen et al 2014
mtm-3	III	3801252	3801770	519	prom	Chen et al 2014
rho-1	IV	16492191	16492669	479	unknown promoter	Chen et al 2014
T19C3.4	III	623811	624139	329	prom	Chen et al 2014
otub-2	I	397755	398120	366	prom	Chen et al 2014
Y71H2AM.20	III	2785938	2786194	257	prom	Chen et al 2014

C



B

locus	chr	start	stop	gene strand	annotation	tested orientation relative to gene	Expression	Expression strength (Strong,medium, weak)	Embryo expression	Reference	Strain Name	Genotype
otub-2	I	397755	398120	+	prom	endogenous	Yes	strong	broad	Chen et al, 2014	JA1613	weSi68 II; unc-119(ed3) III
hlh-2	I	7194716	7195216	-	prom	endogenous	Yes	strong	broad, but not in intestine	this paper	JA1652	weSi89 II; unc-119(ed3) III
ztf-11	I	9910350	9910850	-	prom	endogenous	Yes	strong	broad, but not in intestine	this paper	JA1733	weSi142 II; unc-119(ed3) III
ztf-11	I	9910350	9910850	-	prom	inverted	Yes	medium	broad, but not in intestine (weaker than endogenous direction)	this paper	JA1727	weSi136 II; unc-119(ed3) III
F58D5.5	I	12039662	12040186	+	prom	endogenous	Yes	strong	broad	Chen et al, 2014	JA1608	weSi63 II; unc-119(ed3) III
F58D5.5	I	12039662	12040186	+	prom	inverted	Yes	strong	broad	this paper	JA1765	weSi145 II; unc-119(ed3) III
daf-5	II	14040184	14040697	+	prom + enh	endogenous	Yes	strong	broad	Chen et al, 2014	JA1620	weSi72 II; unc-119(ed3) III
eif-3b	II	14794905	14795250	-	prom	endogenous	Yes	strong	broad	Chen et al, 2014	JA1601	weSi61 II; unc-119(ed3) III
T19C3.4	III	623811	624139	-	prom	endogenous	Yes	strong	broad	Chen et al, 2014	JA1612	weSi67 II; unc-119(ed3) III
Y71H2AM.20	III	2785938	2786194	-	prom	endogenous	Yes	strong	broad	Chen et al, 2014	JA1600	weSi60 II; unc-119(ed3) III
mtm-3	III	3801252	3801770	-	prom	endogenous	Yes	strong	broad	Chen et al, 2014	JA1610	weSi65 II; unc-119(ed3) III
hlh-11	III	9619057	9619496	+	prom	endogenous	Yes	strong	broad	Chen et al, 2014	JA1609	weSi64 II; unc-119(ed3) III
bed-3	IV	9915158	9915437	+	prom	endogenous	Yes	weak	~20 hypodermal cells	this paper	JA1712	weSi128 II; unc-119(ed3) III
rho-1	IV	16492191	16492669	-	unknown promoter	endogenous	Yes	strong	broad	Chen et al, 2014	JA1611	weSi66 II; unc-119(ed3) III
egrh-1	X	14840974	14841376	+	prom	endogenous	Yes	strong	broad	Chen et al, 2014	JA1614	weSi69 II; unc-119(ed3) III
bro-1	I	5187416	5187609	+	enh-intronic	endogenous	Yes	medium	seam cells	this paper	JA1708	weSi130 II ; unc-119(ed3) III
bro-1	I	5187416	5187609	+	enh-intronic	inverted	Yes	weak	seam cells	this paper	JA1737	weSi146 II; unc-119(ed3) III
hlh-2	I	7195757	7196257	-	enh	endogenous	Yes	medium	few anterior cells	this paper	JA1674	weSi108 II; unc-119(ed3) III
hlh-2	I	7196571	7197071	-	enh	endogenous	Yes	weak	10-20 anterior cells	this paper	JA1663	weSi97 II; unc-119(ed3) III
hlh-2	I	7197592	7198092	-	enh	endogenous	Yes	medium	few hypodermal cells	this paper	JA1669	weSi103 II; unc-119(ed3) III
hlh-2	I	7197592	7198092	-	enh	inverted	Yes	medium	few hypodermal cells (weaker than endogenous orientation)	this paper	JA1701	weSi123 II; unc-119(+)]III
hlh-2	I	7198146	7198646	-	enh	endogenous	Yes	medium	few pharyngeal cells	this paper	JA1671	weSi105 II; unc-119(ed3) III
hlh-2	I	7198751	7199251	-	enh	endogenous	Yes	medium	few pharyngeal cells	this paper	JA1673	weSi107 II; unc-119(ed3) III
ztf-11	I	9911508	9912008	-	enh	endogenous	yes	weak	broad, most cells	this paper	JA1667	weSi101 II; unc-119(ed3) III
bed-3	IV	9910252	9910601	+	enh	endogenous	Yes	medium	few anterior cells	this paper	JA1703	weSi125 II; unc-119(ed3) III
bed-3	IV	9911938	9912226	+	enh	endogenous	Yes	weak	~15 nuclei, head and tail	this paper	JA1711	weSi133II; unc-119(ed3) III
bed-3	IV	9913192	9913425	+	enh	endogenous	no		no expression	this paper	JA1704	weSi126 II; unc-119(ed3) III
bed-3	IV	9914205	9914396	+	enh	endogenous	no		no expression	this paper	JA1705	weSi127 II; unc-119(ed3) III
bed-3	IV	9918007	9918207	+	enh-intronic	endogenous	Yes	weak	few hypodermal cells	this paper	JA1707	weSi129 II; unc-119(ed3) III