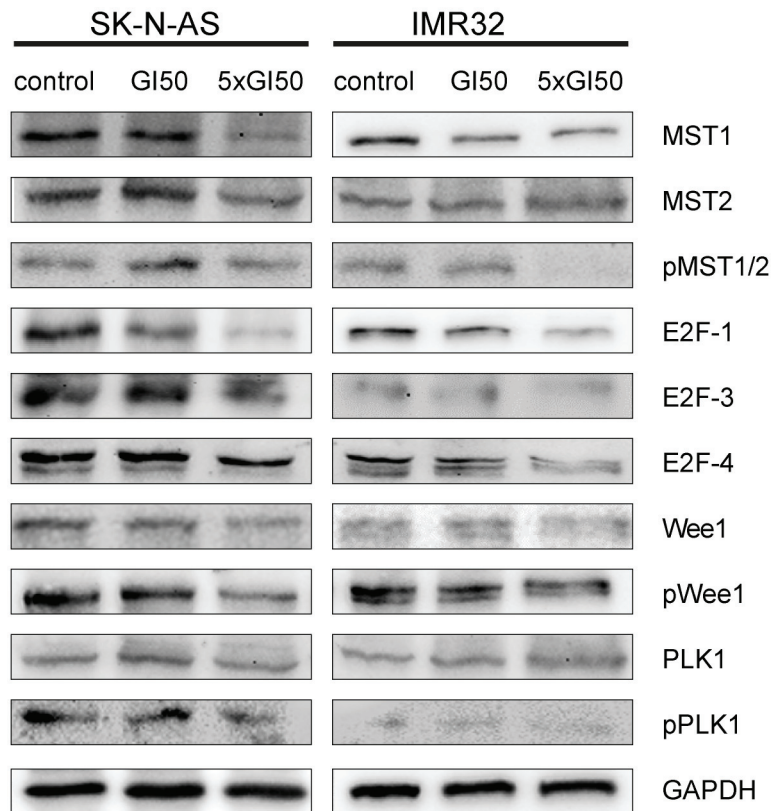
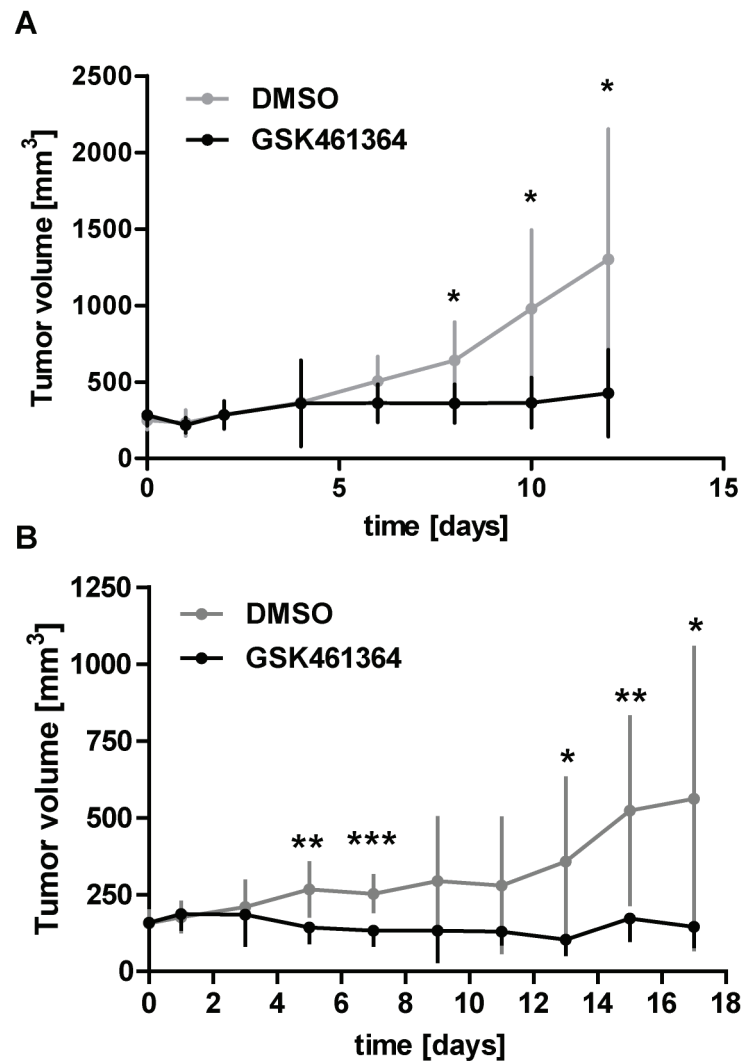


The GSK461364 PLK1 inhibitor exhibits strong antitumoral activity in preclinical neuroblastoma models

SUPPLEMENTARY FIGURES AND TABLES



Supplementary Figure S1: Expression and phosphorylation levels of indicated proteins prior and after treatment of SK-N-AS and IMR32 cells with GI50 or 5xGI50 of GSK461364.



Supplementary Figure S2: Tumor volume of subcutaneous xenografts of A. SK-N-AS and B. IMR32 cells in nu/nu mice treated with GSK461364 (50 mg/kg body weight per day) or control (DMSO). *p<0.05, **p<0.01, *p<0.001.**

Supplementary Table S1: Downregulated transcription factor signatures in SK-N-AS cells after GSK461364 treatment

NAME	SIZE	NES
E2F1DP2_01	127	-1.9616628
HEN1_02	109	-1.9253287
E2F_Q6	179	-1.860544
E2F_Q4	182	-1.8153254
E2F1DP1_01	172	-1.8010364
E2F1DP2_01	172	-1.7957674
E2F1_Q6	181	-1.7928416
E2F_02	173	-1.7849253
E2F4DP2_01	172	-1.7839693
OCT1_B	116	-1.7655734
E2F4DP1_01	179	-1.7615882
FOXO1_02	144	-1.7553129
HEN1_01	100	-1.7456409
E2F_03	179	-1.7293944
E2F1DP1RB_01	172	-1.7070235
NRSF_01	28	-1.6956028
E2F1_Q6_01	178	-1.6726967
E2F_Q3	170	-1.6659842
E2F1_Q3	179	-1.6552488
E2F_Q6_01	177	-1.6449481
E2F_Q4_01	178	-1.5984344
E2F_Q3_01	178	-1.5932943
E2F_01	49	-1.5873586

Supplementary Table S2: Downregulated oncogenic gene signatures in SK-N-AS cells after GSK461364 treatment

NAME	SIZE	NES	FDR q-val
E2F3_UP.V1_UP	102	-2.058161	0.0010087
RB_DN.V1_UP	98	-1.865791	0.018181
BMI1_DN.V1_DN	69	-1.734638	0.0694752
HOXA9_DN.V1_DN	126	-1.726351	0.0589909
MTOR_UP.N4.V1_DN	126	-1.725022	0.0484205
RB_P107_DN.V1_UP	105	-1.650996	0.0921446
CSR_EARLY_UP.V1_DN	93	-1.625697	0.1059141
BRCA1_DN.V1_DN	50	-1.607157	0.1112663
TGFB_UP.V1_DN	102	-1.606911	0.0989034
IL21_UP.V1_DN	43	-1.592734	0.1043842
CAHOY_NEURONAL	23	-1.573932	0.1153082
EGFR_UP.V1_DN	129	-1.567725	0.1121954
ESC_V6.5_UP_LATE.V1_UP	96	-1.531083	0.1473696
LTE2_UP.V1_UP	117	-1.513094	0.1616007
BCAT_GDS748_DN	36	-1.509661	0.1558804
CSR_LATE_UP.V1_DN	95	-1.491467	0.1704251
ERB2_UP.V1_UP	90	-1.491092	0.1608847
BMI1_DN_MEL18_DN.V1_DN	63	-1.461348	0.1948672
STK33_NOMO_DN	138	-1.412927	0.2684895
KRAS.300_UP.V1_DN	15	-1.409728	0.2622002