

## RESEARCH ARTICLE

# Genetic, physiological and comparative genomic studies of hypertension and insulin resistance in the spontaneously hypertensive rat

Philip M. Coan<sup>1,\*</sup>, Oliver Hummel<sup>2</sup>, Ana Garcia Diaz<sup>3</sup>, Marjorie Barrier<sup>1</sup>, Neza Alfazema<sup>1</sup>, Penny J. Norsworthy<sup>4</sup>, Michal Pravenec<sup>5</sup>, Enrico Petretto<sup>4,6</sup>, Norbert Hübner<sup>2,7,8</sup> and Timothy J. Aitman<sup>1,3</sup>

## ABSTRACT

We previously mapped hypertension-related insulin resistance quantitative trait loci (QTLs) to rat chromosomes 4, 12 and 16 using adipocytes from F2 crosses between spontaneously hypertensive (SHR) and Wistar Kyoto (WKY) rats, and subsequently identified *Cd36* as the gene underlying the chromosome 4 locus. The identity of the chromosome 12 and 16 genes remains unknown. To identify whole-body phenotypes associated with the chromosome 12 and 16 linkage regions, we generated and characterised new congenic strains, with WKY donor segments introgressed onto an SHR genetic background, for the chromosome 12 and 16 linkage regions. We found a >50% increase in insulin sensitivity in both the chromosome 12 and 16 strains. Blood pressure and left ventricular mass were reduced in the two congenic strains consistent with the congenic segments harbouring SHR genes for insulin resistance, hypertension and cardiac hypertrophy. Integrated genomic analysis, using physiological and whole-genome sequence data across 42 rat strains, identified variants within the congenic regions in *Upk3bl*, *RGD1565131* and *AABR06087018.1* that were associated with blood pressure, cardiac mass and insulin sensitivity. Quantitative trait transcript analysis across 29 recombinant inbred strains showed correlation between expression of *Hspb1*, *Zkscan5* and *Pdgfr1* with adipocyte volume, systolic blood pressure and cardiac mass, respectively. Comparative genome analysis showed a marked enrichment of orthologues for human GWAS-associated genes for insulin resistance within the syntenic regions of both the chromosome 12 and 16 congenic intervals. Our study defines whole-body phenotypes associated with the SHR chromosome 12 and 16 insulin-resistance QTLs, identifies candidate genes for these SHR QTLs and finds human orthologues of rat genes in these regions that associate with related human traits. Further study of these genes in

the congenic strains will lead to robust identification of the underlying genes and cellular mechanisms.

**KEY WORDS:** Rat, Congenic, Genomic, Hypertension, Insulin resistance

## INTRODUCTION

High blood pressure and type 2 diabetes affect over 1 billion people worldwide and the two conditions frequently co-exist (Shaw et al., 2010; Vos et al., 2015). Although successful blood pressure treatment can reduce stroke risk by up to 40%, concomitant reductions in myocardial infarction are less pronounced (15–25%), suggesting a role of insulin resistance and other metabolic defects in susceptibility to myocardial infarction (Wright et al., 2015). Large numbers of loci associated with hypertension and insulin resistance have been identified through human genome-wide association studies (GWAS). However, the molecular mechanisms underlying most of these associations remain elusive, with many residing in non-coding regions of the genome, having small gene effects and carrying associations across multiple adjacent genes (Manolio et al., 2009).

Genetic studies in animal models provide important opportunities for identifying the genes and mechanisms underlying disease traits. Experimental crosses in rats and mice, including mapping studies in congenic strains, have been used to identify hundreds of physiological and pathophysiological quantitative trait loci (QTLs) for complex traits such as blood pressure, left ventricular (LV) mass and type 2 diabetes (Aitman et al., 2008). Whilst genes underlying these QTLs have in some cases been identified and translated to mice and humans (Aitman et al., 2008; McDermott-Roe et al., 2011; Nabika et al., 2012; Petretto et al., 2008), the overwhelming majority of rodent QTL genes remain unidentified.

The spontaneously hypertensive rat (SHR), the most widely studied model of human essential hypertension, also manifests insulin resistance and LV hypertrophy – traits that commonly coexist with human hypertension (DeFronzo, 1988; Ferrannini et al., 1987; Lusic et al., 2008). Using crosses between SHR and Wistar Kyoto (WKY) rats, we identified three QTLs on chromosomes 4, 12 and 16 linked to adipose insulin sensitivity (Aitman et al., 1997). Further exploration of the chromosome 4 linkage by expression analysis and congenic mapping identified *Cd36* as the major determinant of SHR hypertension and insulin resistance in this chromosomal region, a result followed by the demonstration of associations between *CD36*, hypertension and related metabolic traits in mice and humans (Aitman et al., 1999; Corpeleijn et al., 2006; Farook et al., 2012; Love-Gregory et al., 2008, 2011; Pietka et al., 2014; Wilson et al., 2016).

The aims of the present study were to pursue the linkages to hypertension and insulin-related metabolic traits on SHR

<sup>1</sup>Centre for Genomic and Experimental Medicine & Centre for Cardiovascular Science, Queen's Medical Research Institute, University of Edinburgh, Edinburgh EH4 2XU, UK. <sup>2</sup>Cardiovascular and Metabolic Sciences, Max-Delbrück-Center for Molecular Medicine (MDC), 13125 Berlin, Germany. <sup>3</sup>Department of Medicine, Imperial College London, London SW7 2AZ, UK. <sup>4</sup>MRC Clinical Sciences Centre, Imperial College London, London W12 0NN, UK. <sup>5</sup>Department of Model Diseases, Institute of Physiology, Czech Academy of Sciences, 142 20 Prague, Czech Republic. <sup>6</sup>Duke-NUS Medical School, Singapore 169857, Republic of Singapore. <sup>7</sup>DZHK (German Centre for Cardiovascular Research), partner site, 13316 Berlin, Germany. <sup>8</sup>Charité-Universitätsmedizin, 10117 Berlin, Germany.

\*Author for correspondence (p.m.coan.02@cantab.net)

 P.M.C., 0000-0001-6158-380X; T.J.A., 0000-0002-7875-4502

This is an Open Access article distributed under the terms of the Creative Commons Attribution License (<http://creativecommons.org/licenses/by/3.0>), which permits unrestricted use, distribution and reproduction in any medium provided that the original work is properly attributed.

chromosomes 12 and 16 by generating and characterising new SHR congenic lines and testing candidate genes by analysis of gene expression and *in silico* comparative genomic analysis across 42 rat strains, and between rats and humans. We demonstrate strong linkage between blood pressure, LV mass, *in vivo* insulin action and the congenic regions of SHR chromosomes 12 and 16, and show significant enrichment for genes associated in human GWAS with insulin action in the regions of the human genome that are syntenic to these rat congenic regions.

## RESULTS

### Body mass and energy homeostasis

Body masses across congenic strains were similar, except for SHR.W16, which, on average, weighed 14 g less than SHR (Table 1). WKY rats had heavier epididymal and retroperitoneal fat pads compared with SHR (Table 1). Both SHR.W4 and SHR.W12 had similar epididymal, but heavier retroperitoneal fat pads than SHR (Table 1). Differences in expended energy, food intake and activity were found among the various strains. Compared with SHR, WKY rats expended less energy diurnally and nocturnally, consumed less food and had lower activity counts (Fig. 1A-C; Fig. S1A-C). SHR.W12 energy expenditure and food intake was lower than in SHR (Fig. 1A,B; Fig. S1A,B), while the other congenics had similar energy expenditure and food intake to SHR. Circulating leptin levels were similar across strains (SHR,  $2.12 \pm 0.32$  ng ml<sup>-1</sup>; SHR.W4,  $3.19 \pm 0.51$  ng ml<sup>-1</sup>; SHR.W12,  $1.72 \pm 0.26$  ng ml<sup>-1</sup>; SHR.W16,  $1.80 \pm 0.40$  ng ml<sup>-1</sup>; WKY,  $1.89 \pm 0.25$  ng ml<sup>-1</sup>;  $P > 0.05$ , one-way ANOVA followed by Fisher's LSD test).

### *In vivo* insulin sensitivity

We determined insulin-stimulated glucose clearance ( $K_{ITT}$ ) to assess each strain's ability to remove blood glucose in response to insulin (AUC<sub>insulin</sub>: SHR,  $990 \pm 145$ ; SHR.W4,  $1144 \pm 110$ ; SHR.W12,  $1106 \pm 92$ ; SHR.W16,  $1078 \pm 82$ ; WKY,  $1092 \pm 89$ ;  $P > 0.05$ ) (Fig. 2A,B). WKY  $K_{ITT}$  was  $2.04\%$  min<sup>-1</sup> greater than SHR (Fig. 2B).  $K_{ITT}$  in the congenic rats was also significantly augmented: SHR.W4 cleared glucose at  $1.50\%$  min<sup>-1</sup>, SHR.W12 at  $2.27\%$  min<sup>-1</sup> and SHR.W16 at  $2.25\%$  min<sup>-1</sup>, faster than SHR (Fig. 2B).

### Hepatic and skeletal muscle triglycerides

The triglyceride content of the liver was not significantly different across parental and congenic strains, although WKY and SHR.W16 tended to be lower than SHR, SHR.W4 and SHR.W12 (SHR,  $1.22 \pm 0.31$  mM; SHR.W4,  $0.96 \pm 0.37$  mM; SHR.W12,  $0.82 \pm 0.28$  mM; SHR.W16,  $0.54 \pm 0.26$  mM; WKY,  $0.49 \pm 0.23$  mM;  $P > 0.05$ ). We found no significant differences in skeletal muscle triglyceride content; although SHR.W4 and SHR.W12 tended towards WKY levels (SHR,  $0.37 \pm 0.4$  mM; SHR.W4,  $0.99 \pm 0.39$  mM; SHR.W12,  $0.86 \pm 0.67$  mM; SHR.W16,  $0.54 \pm 0.28$  mM; WKY,  $1.18 \pm 0.79$  mM;  $P > 0.05$ ).

### Hypertension and cardiac hypertrophy

We showed previously that hypertension in SHR, linked to chromosome 4 in recombinant inbred and congenic strains, is, in part, caused by renal Cd36 deficiency, as a component of the overall metabolic syndrome abnormalities encoded by SHR *Cd36* (Aitman et al., 1999; Neckar et al., 2012; Pravenec et al., 1999, 2008). Therefore, we decided to investigate blood pressure (BP) and cardiac hypertrophy in the chromosome 12 and 16 lines. The SHR had significantly higher mean BP (182/122 mmHg) than WKY (129/88 mmHg) (Fig. 3A,B). Both SHR.W12 and SHR.W16 had significantly lower BP than SHR (172/115 and 172/110 mmHg, respectively, in SHR.W12 and SHR.W16; Fig. 3A,B).

Relative LV mass in WKY, SHR.W12 and SHR.W16 (mean values 1.83, 2.02 and 1.90 g kg<sup>-1</sup>, respectively) was significantly lower than in SHR (2.21 g kg<sup>-1</sup>; Fig. 3C). A significant positive relationship was found between systolic BP and LV mass ( $r^2 = 0.618$ ,  $P < 0.0001$ ; Fig. 3D). Relative heart mass was similar across strains (mean values: SHR, 3.98; SHR.W12, 3.84; SHR.W16, 4.08; WKY, 3.89 g kg<sup>-1</sup>; all  $P > 0.05$ ).

Heart rate varied between strains, with WKY having a significantly higher (+16 bpm) and SHR.W12 significantly lower (-20 bpm) heart rate than SHR (Table 2). Heart rate combined with systolic blood pressure, the rate pressure product (RPP), was lower (-147 bpm mmHg) in WKY than SHR (Fig. 3E). Both congenic strains had reduced RPP that was 89 and 75 bpm mmHg lower than SHR (Fig. 3E). RPP was highly correlated with LV mass ( $r^2 = 0.621$ ,  $P < 0.0001$ ; Fig. 3F).

We used 2-lead ECG to detect alterations in ventricular polarisation related to cardiac hypertrophy. WKY had significantly shorter corrected QT interval (QTc-B), QT dispersion (QTD) and ST interval (ST-I) than SHR (Table 2). SHR.W12 QTc-B (-13 ms), QTD (-45 ms) and ST-I (-4.4 ms) were all shorter than SHR; ST-I alone was shorter (-5.8 ms) in SHR.W16 than SHR ( $P < 0.05$ ).

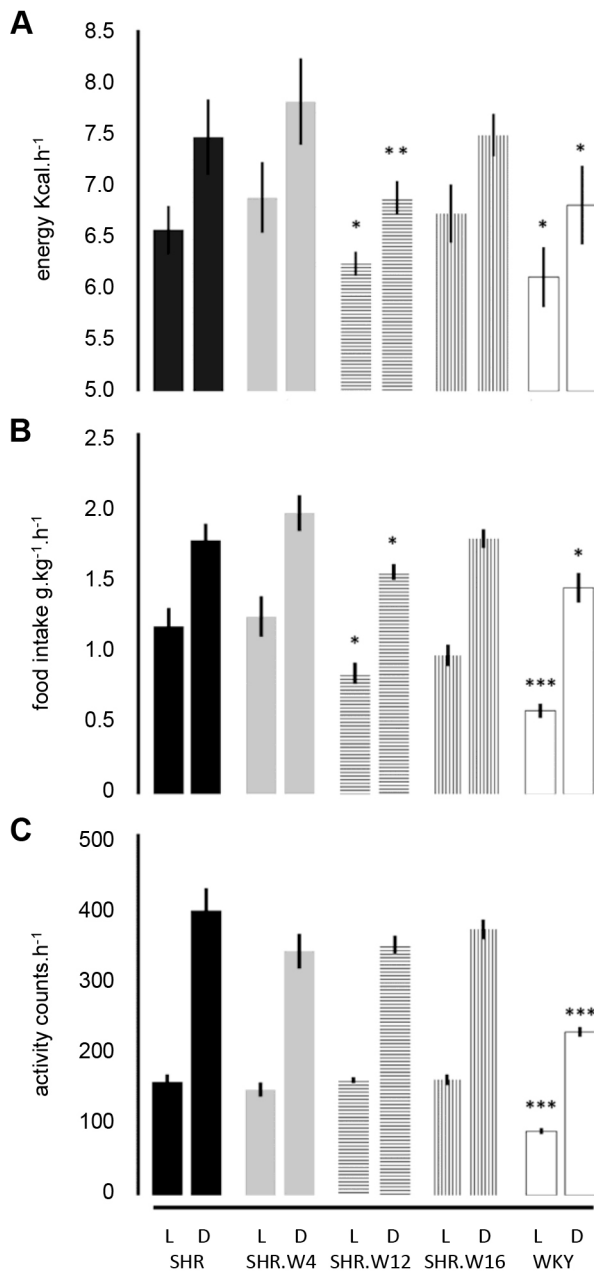
### Expression analysis of genes in the chromosome 12 and 16 loci

Thirty-two genes within the chromosome 12 congenic region and 32 genes in the chromosome 16 congenic region were found from previous expression quantitative trait locus (eQTL) and quantitative trait transcript (QTT) data (Langley et al., 2013; Morrissey et al., 2011) to be either *cis*-eQTLs or to have gene expression that correlated across the BXH/HXB recombinant inbred strain panel, in one or more tissues, with hypertension or insulin resistance-related traits. We selected 14 of these 64 genes that showed a QTT correlation in adrenal, kidney or left ventricle, related to hypertension; or showed a QTT correlation in fat, liver or skeletal muscle related to whole-body glucose homeostasis or tissue-specific metabolic phenotypes, for differential expression analysis in the relevant tissue, between the SHR, WKY and the chromosome 12 and 16 congenic strains (data not shown). Four genes – three on chromosome 12 and one on chromosome 16 – showed differential

**Table 1. Rat body and fat pad mass at 16 weeks of age**

	N	Body mass (g)	P	Epididymal fat pad (g kg <sup>-1</sup> )	P	Retroperitoneal fat pad (g kg <sup>-1</sup> )	P
SHR	20	317 (312,321)	–	5.17 (4.89,5.45)	–	5.21 (4.82,5.60)	–
SHR.W4	16	312 (309,315)	0.5	5.00 (4.70,5.30)	0.4	5.83 (5.56,6.10)	0.026
SHR.W12	18	328 (325,331)	0.1	5.40 (5.10,5.70)	0.3	5.92 (5.54,6.30)	0.018
SHR.W16	16	303 (300,306)	0.04	5.21 (4.73,5.69)	0.9	5.07 (4.71,5.43)	0.6
WKY	20	314 (310,318)	0.6	5.81 (5.53,6.09)	0.003	6.89 (6.40,7.38)	$6.9 \times 10^{-6}$

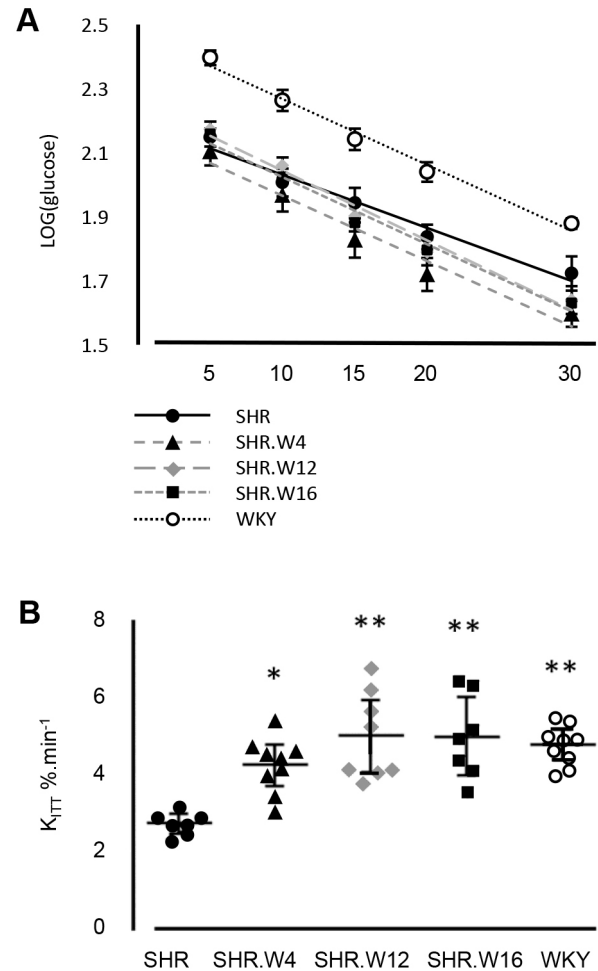
Values are means (95% CI). *P*-values compare each strain with SHR.



**Fig. 1. Indirect calorimetry, activity and food intake.** (A) Energy expenditure, (B) food intake and (C) activity at age 15 weeks in parental SHR and WKY and congenic strains ( $n=10-16$  rats per strain). Bar and whiskers show mean $\pm$ 95% CI; \* $P<0.05$ , \*\* $P<0.005$ , \*\*\* $P<0.0001$ , compared with SHR. L, light; D, dark.

expression between SHR and WKY, and in addition showed similar expression between the relevant congenic strain and WKY, indicating *cis*-regulated control of gene expression from within the congenic segment (Table 3).

*Zkscan5* (zinc finger with KRAB and SCAN domains 5), a transcript inversely correlated with systolic blood pressure in the kidney, was 1.25-fold lower in abundance in kidney tissue in SHR. W12 and WKY compared with SHR (Table 3, Table S4). Two transcripts, adrenal ubiquitin-specific peptidase 42 (*Usp42*) and hepatic heat shock protein  $\beta$ 1 (*Hspb1*) (inversely correlated to adipocyte volume), were elevated in SHR.W12 and WKY (1.57- and 2.7-fold on average, respectively) compared with SHR (Table 3, Table S4).



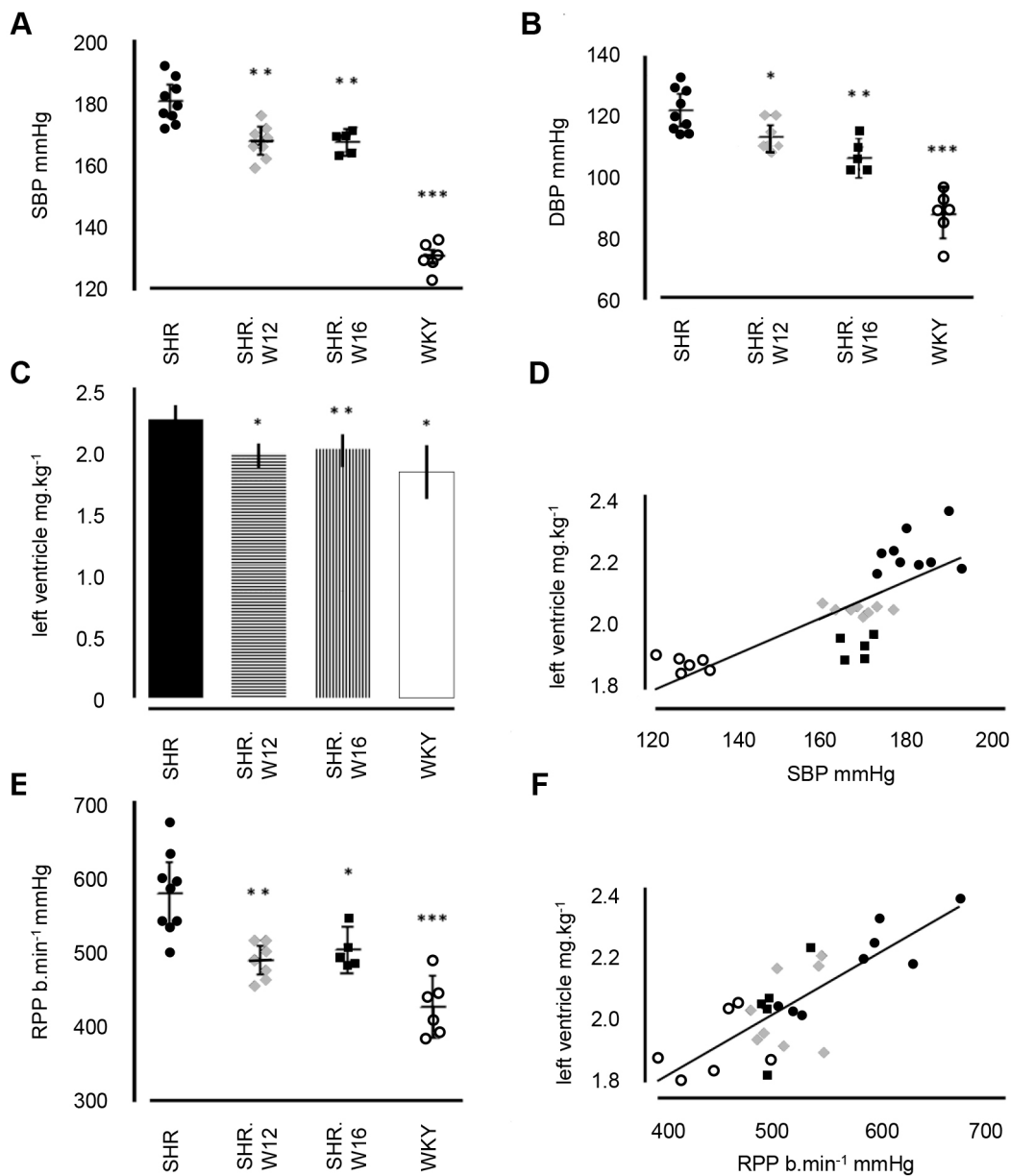
**Fig. 2. In vivo insulin-mediated glucose clearance.** (A) Log(glucose) disappearance 5-30 min after insulin bolus and (B) insulin-stimulated plasma glucose clearance ( $K_{ITT}$ ) in parental and congenic strains ( $n=7-10$  rats per strain). Mean $\pm$ 95% CI; \* $P=0.0008$ , \*\* $P<0.0001$ , compared with SHR.

On chromosome 16, platelet-derived growth factor receptor-like (*Pdgfrl*), which correlates with 'delta captopril effects' in the left ventricle, was differently expressed in SHR.W16 and WKY compared with SHR; WKY expression was reduced, whereas in SHR.W16, expression was increased. However, expression of *Pdgfrl* in adipose tissue was more closely matched in SHR.W16 to WKY (2.4- and 3.3-fold, respectively) than to SHR (Table 3, Table S4).

#### Loci on chromosomes 12 and 16 harbour variants related to insulin resistance, hypertension and hypertrophy

In order to identify deleterious single-nucleotide variants (SNVs) present in the SHR congenic regions on chromosomes 12 and 16 (and absent in WKY), that were associated with insulin resistance, hypertension and LV hypertrophy, we used the PLINK tool (Purcell, 2014) to integrate relevant phenotype data with SNV data from 42 rat strains. We located all SNVs together with their PLINK-assigned  $P$ -values (indicating closeness of SNV-to-phenotype relationship), for those SNVs with  $P<0.01$  (Fig. S2).

Missense variants in the coding regions of 12 genes with  $P<1\times 10^{-4}$  were considered most likely to affect the phenotypes of interest in SHR, causing a predicted deleterious amino acid substitution (Table 4). SNVs in *Dtx2*, *Upk3b* and *Upk3bl* were



**Fig. 3. Blood pressure, heart and left ventricular mass.** (A) Systolic (SBP), (B) diastolic blood pressure (DBP), (C) relative left ventricle (LV) mass, (D) scatter plot showing relationship between SBP and LV mass across strains, (E) rate pressure product (RPP), (F) scatter plot showing correlation between RPP and LV weight across strains. \* $P < 0.05$ , \*\* $P < 0.005$ , \*\*\* $P < 0.0001$ , between SHR and WKY/congenic strains ( $n = 5-9$  rats per strain).  $P > 0.05$ , differences in left ventricle mass between WKY and congenic strains. Mean  $\pm$  95% CI.

found to be significantly associated with both insulin resistance and hypertension (Table 4). Five SNVs in genes *AABR06087018.1*, *Pms2*, *Zfp866*, *Gatad2a* and *Daglb* were found to be exclusively associated with insulin resistance. In addition, two SNVs in genes *RGD1565131* and *Grid2ip* were found to be associated with cardiac hypertrophy (Table 4).

#### Identification of human GWAS hits within the syntenic regions of the donor congenic segments

To investigate whether the chromosomal segments of the human genome that are syntenic to rat chromosome 12 and 16 congenic regions contain genes identified as human GWAS hits for relevant cardio-metabolic traits (including hypertension, left ventricular

**Table 2. Heart rate and 2-lead ECG parameters in congenic and parental strains at 14-15 weeks of age**

	N	HR (b min <sup>-1</sup> )	P	QTc-B (ms)	P	QTc-B D (ms)	P	ST-I (ms)	P
SHR	9	317 (303,331)	–	232 (223,240)	–	148 (124,172)	–	84.5 (82.5,86.5)	–
SHR.W12	8	297 (286,309)	0.0001	219 (214,224)	0.041	103 (83,123)	0.014	78.7 (77.3,80.2)	<0.05
SHR.W16	6	316 (297,334)	0.8	221 (218,223)	0.07	116 (85,146)	0.1	80.1 (78.7,81.5)	0.014
WKY	7	333 (317,350)	0.006	215 (207,222)	0.024	86 (53,119)	0.009	75.6 (74.0,77.2)	0.014

Values are means (95% CI).  $P$ -values compare each strain with SHR.

**Table 3. Relative transcript levels of candidate *cis*-regulated eQTL genes residing in the chromosome 12 and 16 congenic regions**

Gene	Chromosome location of eQTL gene	Tissue	Relative transcript level				
			SHR	Congenic	<i>P</i>	WKY	<i>P</i>
<i>Zkscan5</i>	12:13,224,021-13,245,216:-1	Kidney	1.01 (1.00,1.01)	0.81 (0.73,0.89)	0.003	0.80 (0.69,0.90)	0.006
<i>Usp42</i>	12:14,904,019-14,922,553:1	Adrenal gland	1.00 (1.00,1.01)	1.54 (1.41,1.66)	0.0004	1.60 (1.19,2.00)	0.029
<i>Hspb1</i>	12:25,837,084-25,838,661:-1	Liver	1.00 (1.00,1.00)	2.53 (1.87,3.20)	0.003	2.79 (2.57,3.00)	2×10 <sup>-6</sup>
<i>Pdgfrl</i>	16:54,098,419 -54,161,461:-1	Adipose	1.03 (1.00,1.06)	2.99 (1.95,4.02)	0.006	2.75 (2.34,3.16)	9×10 <sup>-5</sup>
		Left ventricle	1.02 (0.99,1.05)	3.84 (3.03,4.65)	0.001	0.64 (0.47,0.81)	0.01

Values are means (95% CI). *P*-values compare each strain with SHR. eQTL, expression quantitative trait locus; congenic, refers to the congenic strain of interest: SHR.W12 for genes on chromosome 12, SHR.W16 for genes on chromosome 16.

hypertrophy, insulin resistance and type 2 diabetes) we mined the syntenic regions in the human genome for reported GWAS hits (Table S1).

We identified GWAS hits associated with type 2 diabetes, metabolic syndrome and insulin resistance-related traits in five genes in the human syntenic regions of the chromosome 12 congenic strain, and with 10 genes in the syntenic regions of the chromosome 16 congenic strain (Table 5, Table S5). This represents a significant enrichment for GWAS hits in these chromosomal regions (chromosome 12 syntenic regions,  $P < 0.003$ ; chromosome 16 syntenic region,  $P < 6.7 \times 10^{-13}$ ; Table 5).

GWAS hits associated with blood pressure were identified in two genes in the chromosome 12 congenic strain syntenic regions and two genes in the chromosome 16 congenic strain. GWAS hits for LV mass were not identified in the chromosome 12 syntenic regions but were identified in two genes in the chromosome 16 syntenic region, one of these also being associated with blood pressure. Syntenic segments of neither region were significantly enriched for genes or GWAS hits for blood pressure-related traits, but the syntenic regions of the chromosome 16 region were significantly enriched for GWAS hit genes for left ventricular (LV) mass ( $P < 8.7 \times 10^{-4}$ ) (Table 5). Three genes, *SLC12A9* (chromosome 12), *CACNAID* and *CSMD1* (chromosome 16), were associated with both blood pressure and insulin resistance-related metabolic traits (Table S5).

## DISCUSSION

Hypertension and insulin resistance frequently co-occur in the same individual. Pathologically increased blood pressure leads to increased myocardial load, while insulin resistance affects myocardial metabolism and vascular reactivity, leading to compensatory LV hypertrophy and failure (Evrengul et al., 2005; Kaftan et al., 2006; Roman and Devereux, 2014).

We previously mapped QTLs on SHR chromosomes 4, 12 and 16 that were associated with reduced insulin-stimulated glucose uptake in isolated adipocytes from hypertensive SHR compared with normotensive WKY (Aitman et al., 1997). Subsequent studies investigating the chromosome 4 region identified *Cd36*, a fatty acid translocase, as the gene underlying both insulin sensitivity and blood pressure QTLs on SHR chromosome 4 (Aitman et al., 1999; Pravenec et al., 2008). *CD36* has since been found to be important in the development of type 2 diabetes and essential hypertension in humans (Corpeleijn et al., 2006; Lepretre et al., 2004; Wang et al., 2012).

In this study, we explored regions on SHR chromosomes 12 and 16 and their function in regulating blood pressure, cardiac hypertrophy and insulin resistance. Cardiovascular and metabolic phenotyping of the congenic strains showed that the chromosome 12 and 16 congenic strains had captured important genes for both cardiovascular and metabolic phenotypes within the congenic segments. Systolic blood pressure was reduced by around 10 mmHg in both of the congenic strains, equivalent to ~20% of the difference between SHR and WKY. The variation in systolic blood pressure across the SHR, WKY, and two congenic strains explained over 60% of the variation in both left ventricular mass and left ventricular load across the four strains (Fig. 3E,F). The reduction in left ventricular mass and myocardial load in either of the two congenic strains compared with parental SHR rats was almost equivalent to the total difference between the SHR and WKY strains. In metabolic terms, insulin tolerance testing showed an increase in  $K_{ITT}$ , the glucose disposal rate, by over 50% in both congenic strains compared with the insulin-resistant SHR parental strain. As with several of the cardiovascular traits, this increase in insulin action was similar to the entire difference between the SHR and WKY parental lines.

We combined physiological, eQTL and differential expression data to identify candidate genes for SHR insulin resistance and blood

**Table 4. Single nucleotide variants present in SHR and absent in WKY that were most significantly ( $P < 10^{-4}$ ) linked to insulin resistance, hypertension and left ventricular hypertrophy**

Trait	Chr.	Position	Ref.	Var.	PLINK <i>P</i> -value	Gene	Ensembl gene ID	$\Delta\alpha\alpha$
IR	16	23202666	G	A	1.03E <sup>-13</sup>	<i>AABR06087018.1</i>	ENSRNOG00000049177	A38T
	12	25707930	G	A	2.13E <sup>-08</sup>	<i>Dtx2</i>	ENSRNOG00000001432	P249S
	12	25680540	C	T	2.13E <sup>-08</sup>	<i>Upk3b</i>	ENSRNOG00000023686	R56Q
	12	14765423	C	T	1.21E <sup>-07</sup>	<i>Pms2</i>	ENSRNOG00000001040	V207M
	12	25659035	C	T	5.17E <sup>-07</sup>	<i>Upk3bl</i>	ENSRNOG00000038896	D57N
	16	21336324	G	A	1.16E <sup>-06</sup>	<i>Zfp866</i>	ENSRNOG00000042580	E48K
	16	21175611	A	G	1.16E <sup>-06</sup>	<i>Gatad2a</i>	ENSRNOG00000022173	S235G
	12	15170110	C	A	1.56E <sup>-05</sup>	<i>Daglb</i>	ENSRNOG00000001079	E398D
HBP	12	25659035	C	T	4.92E <sup>-06</sup>	<i>Upk3bl</i>	ENSRNOG00000038896	D57N
	12	25680540	C	T	3.47E <sup>-05</sup>	<i>Upk3b</i>	ENSRNOG00000023686	R56Q
LVH	12	25707930	G	A	3.47E <sup>-05</sup>	<i>Dtx2</i>	ENSRNOG00000001432	P249S
	12	14262304	A	G	1.71E <sup>-05</sup>	<i>RGD1565131</i>	ENSRNOG00000025212	H71R
	12	15266170	G	A	2.21E <sup>-05</sup>	<i>Grid2ip</i>	ENSRNOG00000030927	P739S

Chr., chromosome; HBP, high blood pressure; IR, insulin resistance; LVH, left ventricular hypertrophy; Ref., reference nucleotide; Var., variant present in SHR;  $\Delta\alpha\alpha$ , amino acid change consequent to variant.

**Table 5. Contingency tables for type 2 diabetes, insulin resistance, metabolic syndrome, hypertension and left ventricular hypertrophy**

				Within congenic region	Outside congenic region	Total	<i>P</i>
Type 2 diabetes, insulin resistance, metabolic syndrome	Chr. 12	Observed	GWAS hit genes	5	70	75	0.0028
			Non-GWAS hit genes	510	26104	26614	
			Total	515	26174	26689	
		Expected	GWAS hit genes	1	74	75	
			Non-GWAS hit genes	514	26100	26614	
			Total	515	26174	26689	
	Chr. 16	Observed	GWAS hit genes	10	65	75	
			Non-GWAS hit genes	726	25888	26614	
			Total	736	25953	26689	
		Expected	GWAS hit genes	2	75	75	
			Non-GWAS hit genes	734	26614	26614	
			Total	736	25953	26689	
Hypertension	Chr. 12	Observed	GWAS hit genes	2	49	51	0.3
			Non-GWAS hit genes	513	26125	26638	
			Total	515	26174	26689	
		Expected	GWAS hit genes	1	50	51	
			Non-GWAS hit genes	514	26124	26638	
			Total	515	26174	26689	
	Chr. 16	Observed	GWAS hit genes	2	49	51	
			Non-GWAS hit genes	734	25904	26638	
			Total	736	25953	26689	
		Expected	GWAS hit genes	1	50	51	
			Non-GWAS hit genes	735	25903	26638	
			Total	736	25953	26689	
Left ventricular hypertrophy	Chr. 16	Observed	GWAS hit genes	2	8	10	8.7×10 <sup>-4</sup>
			Non-GWAS hit genes	734	25945	26679	
			Total	736	25953	26689	
		Expected	GWAS hit genes	<1	10	10	
			Non-GWAS hit genes	735.72	25943	26679	
			Total	736	25953	26689	

pressure encoded on these congenic segments. Of the 64 genes within the chromosome 12 and 16 congenic intervals that were identified previously as either *cis*-eQTL genes in relevant tissues or correlated in QTT analysis with relevant cardio-metabolic phenotypes, nine genes on chromosome 12 and five genes on chromosome 16 were tested because of correlation in QTT, with the most plausible tissue expressing the differentially expressed gene. Three genes from chromosome 12 – *Hspb1*, *Zkscan5* and *Usp42* – were found to be differentially expressed between SHR and the congenic strain in the tissue of interest. Of the proteins encoded by these genes, *Hspb1* (also known as *Hsp27*) has been the most studied and is involved in numerous cellular processes, including protection from oxidative stress (Acunzo et al., 2012; Matsumoto et al., 2015). This metabolic stress protein has been found to improve insulin signalling when induced in monocytes extracted from diabetic and obese patients (Simar et al., 2012). *Hsp27* was also upregulated with *Pparg* and *Hsp72* by the experimental compound naringin, which improves insulin sensitivity and lipid metabolism in rats (Sharma et al., 2011). Scant information is available for *Zkscan5*, although one GWAS study located a single nucleotide polymorphism (SNP) with significant association to dehydroepiandrosterone sulfate levels, which have been linked to pulmonary hypertension (Ventetuolo et al., 2016; Zhai et al., 2011). Ubiquitin-specific peptidase 42 (*Usp42*), stabilises p53 in response to stress and is a transcriptional regulator; however, there is currently no study linking the gene to cardio-metabolic traits (Hock et al., 2014).

Of the five genes on chromosome 16 that were correlated in QTT with cardio-metabolic phenotypes, only one gene, *Pdgfr1*, was found to be differentially expressed between SHR and congenic

strain adipose tissue, showing similarly increased expression in SHR.W16 and WKY compared with SHR, in epididymal fat. The PDGF signalling pathway regulates a number of processes, including angiogenesis, wound healing and inflammation (Hu and Huang, 2015). Moreover, low levels of PDGF-BB, a component of this signalling pathway, is linked to cardiovascular events in type 2 diabetics (Yeboah et al., 2007).

From linkage disequilibrium analysis across 42 rat strains, we found SHR SNVs in 10 genes in the chromosome 12 and 16 congenic regions that were significantly associated across the 42 rat strains with hypertension, hypertrophy and insulin resistance in the SHR. Three genes within the chromosome 12 congenic strain interval (*Dtx2*, *Upk3b*, *Upk3bl*) contain SNVs that were significantly associated across 42 rat strains with both hypertension and insulin resistance. Deltex 2 E3 ubiquitin ligase (*Dtx2*), acts as a negative regulator of Notch signals in mature T-cells (Lehar and Bevan, 2006). Inhibition of Notch signalling has been reported to improve insulin resistance (Pajvani et al., 2011). Furthermore, *Notch2* SNPs have been reported in a number of GWAS studies associated with cardiovascular disease and type 2 diabetes (Qi et al., 2013; Zeggini et al., 2008). Therefore, it is plausible that the SHR variant of *Dtx2* has a reduced ability to negatively regulate Notch signals in relation to downstream insulin signalling, although this will require testing in future studies.

Uroplakin 3b (*Upk3b*), is a minor component in the asymmetric unit membrane of the urothelium (Yu et al., 1994) and *Upk3b* expression in the early mouse embryo is reportedly restricted to mesothelial cells and epicardium (Huang et al., 2012). However, little is known about the physiological function of *Upk3b* and no association with hypertension or insulin action has been reported

hitherto. The related gene *Upk3bl* has scant published information regarding its function, but may have involvement in the rare disease rhabdoid glioblastoma (Koh et al., 2015).

Our human-rat comparative analysis of the chromosome 12 and 16 congenic segments indicated a significant enrichment for insulin resistance-related GWAS hit genes on the regions syntenic to both congenic segments, with 5 and 10 GWAS hit genes for these traits within the syntenic regions to the chromosome 12 and 16 congenic segments, respectively. We also found an enrichment, although less significant, for GWAS hit genes for cardiac hypertrophy in the regions syntenic to the chromosome 16 congenic strain.

Three of the GWAS genes (*SLC2A9*, *CACNAID* and *CSMD1*), one in the chromosome 12 and two in the chromosome 16 synteny groups, harboured SNPs significantly associated with both blood pressure and insulin resistance/type 2 diabetes in humans. *SLC2A9* encodes an electroneutral inorganic cation-chloride co-transporter whose function has yet to be fully established (Gagnon and Delpire, 2013). *CACNAID* encodes a voltage-dependent calcium channel, and SNPs in this gene are associated by GWAS with insulin resistance in African Americans, and with blood pressure in Chinese and people of African ancestry (Irvin et al., 2011; Lu et al., 2015; Zhu et al., 2015). Deletion of *Cacna1d* in mice was expected to affect insulin secretion and result in hyperglycaemia; however, this was not observed (Platzer et al., 2000). However, the authors did find that *Cacna1d*<sup>-/-</sup> mice were affected by arrhythmia and reduced heart rate compared with the wild type (Platzer et al., 2000).

*CSMD1* encodes the cub and sushi domains 1 protein and, as for *CACNAID*, SNPs in this gene are associated with insulin resistance in African Americans, and with blood pressure in the Han Chinese population (He et al., 2013; Irvin et al., 2011). Functionally, *Csmd* has been found to negatively regulate the classical complement pathway (Kraus et al., 2006). Thus, given the growing evidence of the role of complement in cardiovascular and metabolic disease (Hertle et al., 2014), this gene may be important in preventing over-activity of the complement system – a phenomenon observed in both cardiovascular and metabolic disease.

The glutamate receptor ionotropic delta 1 gene *GRID1* was one of two GWAS orthologues for LV hypertrophy in the chromosome 16 congenic region (Vasan et al., 2009). *Grid1*<sup>-/-</sup> mice were not reported to have a cardiovascular phenotype (Gao et al., 2010); however, deletion of *GRID1* and surrounding genes in humans, was associated with cardiac defects (van Bon et al., 2011). The second hypertrophy-related gene neuregulin 3 (*NRG3*) has unknown function; however, one study in the rat showed downregulation of neuregulin receptor signalling in the transition from hypertrophy to failure in rats (Rohrbach et al., 1999).

Our study provides a complementary view to a recently published study by Sedova et al. (2016), which carried out blood pressure and metabolic testing and an appraisal of SNVs on a single SHR congenic strain for chromosome 16. Although these two studies highlight some genes in common (such as the plausible candidates *Lpl* and *Gatad2a*), our study, of congenic strains on chromosomes 12 and 16, was carried out in linkage regions to adipocyte insulin resistance that we had defined previously. Sedova carried out a limited appraisal of SNVs between the two parental strains in the chromosome 16 congenic region. Our study may have more plausibility, as it drew upon extensive gene expression and QTT data, as well as linkage disequilibrium data across 42 rat strains, to filter and select candidate genes within the congenic regions.

The genes and mechanisms underlying hypertension and insulin resistance, in humans and rats, are yet to be fully elucidated. Here,

we combined genetic, physiological and comparative genomic analyses to define chromosomal regions underlying SHR blood pressure, insulin sensitivity and left ventricular mass, identifying candidate genes and finding human orthologues of rat genes in these regions that associate with these traits. Further study of these genes in the congenic strains will lead to robust identification of the underlying genes and cellular mechanisms.

## MATERIALS AND METHODS

### Generation of congenic strains

Congenic lines containing regions of WKY chromosomes 12 and 16 on an SHR background were constructed with a speed congenic approach using SHR/NCrl as recipient genome and WKY/NCrl (Charles River Laboratories, Margate, UK) as donor genome (Markel et al., 1997). A chromosome 4 congenic line that captured *Cd36* was generated for comparative purposes. Microsatellite marker analysis was carried out at each backcross (Tables S2 and S3), and progeny heterozygous for relevant congenic segments with the lowest proportion of WKY background genotypes were selected as breeders. Once all background microsatellites were confirmed as homozygous SHR, each of the chromosome 4, 12 and 16 lines were intercrossed. Offspring that were homozygous for WKY in the congenic interval (using microsatellites in Table S3) were brother-sister mated to fix the congenic interval. The lines were designated SHR.W4-(D4rat143-D4rat10)/Tja (SHR.W4), containing a congenic segment of 24.2 Mb; SHR.W12-(D12rat1-D12mit3)/Tja (SHR.W12), containing a congenic segment of 28.6 Mb; and SHR.W16-(D16rat88-D16rat15)/Tja (SHR.W16), containing a congenic segment of 79.2 Mb. All animals were maintained under 12 h:12 h light-dark cycle with free access to food and water. Experimental procedures were approved by the UK Home Office under the Animals (Scientific) Procedures Act 1986.

### Energy expenditure, food intake and activity

Indirect calorimetry, food intake and activity were assessed using the OxyMax Lab Animal Monitoring System (CLAMS, Columbus Instruments, Columbus, OH, USA) for 72 h (24 h acclimatisation; 48 h data collection) with free access to water and chow. Energy expenditure was calculated according to McLean and Tobin (CV, calorific value, kcal kg<sup>-1</sup> h<sup>-1</sup>) (McLean and Tobin, 1987). Serum leptin ( $n=6$  per group) was measured by ELISA (Millipore, UK).

### Whole-body insulin sensitivity

Insulin-stimulated glucose clearance (Actrapid; Novo Nordisk, Bagsvaerd, Denmark) was measured by glucometer (Contour, Bayer Healthcare, Basel, Switzerland), in venous blood drawn from the tail vein of overnight-fasted rats with free access to water, 5-30 min following an intravenous insulin bolus, according to Eskens et al. (2013), and using an insulin dose, 1 U kg<sup>-1</sup>, previously used to reliably assess whole-body response to insulin (Diaz-Castroverde S, 2016; Lambert et al., 2016; Moak et al., 2014). Rats were anaesthetised throughout in order to reduce stress associated with hypoglycaemia and this has not been found to affect the interpretation of insulin sensitivity in the same rat strains (Hulman et al., 1991, 1993). Body temperature was controlled using the Homeothermic Monitoring System (Harvard Apparatus). Plasma insulin was determined by ELISA (Rat/Mouse Insulin ELISA, Millipore). Glucose clearance ( $K_{ITT}$ , % min<sup>-1</sup>) was calculated from the log(glucose) disappearance curve 5-30 min (Fig. 2A) as  $0.693/t_{1/2} \times 100$  (Lundbaek, 1962).

### Hepatic and skeletal muscle triglyceride analysis

Lipid was extracted from liver and soleus muscle ( $n=4$  per group) according to manufacturer's instructions and analysed using the Triglyceride Quantification Kit (Abcam, Cambridge, UK).

### Blood pressure and ECG telemetry

Blood pressure and 2-lead ECG were measured in conscious, free-moving 14- to 15-week-old male rats. A blood pressure ECG radio-telemetry device was surgically implanted in accordance with the manufacturer's instructions and cardiovascular measurements taken at least 1 week after implantation

(HD-S11; Data Sciences International, Roermond, The Netherlands). Blood pressure, heart rate and QT interval were measured for 5 min  $h^{-1}$  over a consecutive 48 h period, analysed using Ponemah (Ponemah Data Analysis v5.20, Data Sciences International, Roermond, The Netherlands) and presented as mean values over this time period. Rate pressure product was calculated as systolic blood pressure $\times$ heart rate $\times 10^{-2}$  (Gobel et al., 1978). Bazett's correction for QT was calculated as  $QTc-B=QT/(RR)^{1/2}$  (Kmecova and Klimas, 2010);  $QTc-B D$  was calculated as the difference between maximum and minimum  $QTc-B$  (de Bruyne et al., 1998).

### Expression and variant analyses of genes in the chromosomes 12 and 16 QTLs

We used two approaches to identify candidate genes for the SHR traits investigated in this study: first, we used previously generated eQTL (Langley et al., 2013; Petretto et al., 2006) and quantitative trait transcript (QTT) (Morrissey et al., 2011) data to identify eQTL genes within the congenic intervals and genes that correlated with (patho)physiological traits across the BXH/HXB recombinant inbred strain panel. Relative transcript levels were quantified by real-time quantitative PCR (qPCR) from cDNA reverse transcribed from total RNA of 4-5 animals per group (iScript cDNA Synthesis Kit, Bio-Rad) extracted with Tri-reagent (Sigma) from adrenal gland, epididymal fat, kidney, left ventricle, liver and skeletal muscle. Primers were designed using Primer-BLAST software (<http://www.ncbi.nlm.nih.gov/tools/primer-blast/>) with sequences verified for absence of single nucleotide polymorphisms using SHR and WKY whole-genome sequences and the Integrated Genomics Viewer (<http://www.broadinstitute.org/igv/>). qPCR was carried out on the 7900HT Fast Real-Time PCR System (Thermo Fisher Scientific).  $C_T$  values were analysed using the  $2^{-\Delta\Delta CT}$  method normalising to  $\beta$ -actin gene, with SHR used to compare strains.

Second, we used PLINK to rank SHR SNVs within the congenic intervals on chromosome 12 and 16, with the closest relationship to each trait of interest (insulin resistance, hypertension, hypertrophy), allowing us to compare deleterious SNVs present in SHR and absent in WKY (Atanur et al., 2013; Purcell, 2014). We obtained metabolic and cardiovascular data from the Rat Genome Database on 42 rat strains and grouped strains depending on glucose and insulin levels, blood pressure, and left ventricular mass (<http://rgd.mcw.edu/wg/phenotype-data13>). We then generated .map and .ped input files for the PLINK program from a .vcf file containing all SNVs of the 42 strains (Hermesen et al., 2015). The original genotype calls were adjusted such that heterozygous calls were made if  $>25\%$  and  $<75\%$  of the reads supported a non-reference genotype, otherwise they were called as homozygous. The effects of SNVs on genes, transcripts and protein sequence were evaluated using a locally installed Ensembl Variant Effect Predictor (VEP) (<http://www.ensembl.org/info/docs/tools/vep/script/index.html>).

The VEP analysis was based on rat genome assembly Rn0r\_5.0 and Ensembl release 78 annotations. The PLINK analysis was performed as standard case/control association analysis. We used the additional PLINK options '-assoc' and '-allow-no-sex'.

### Comparative analysis of the congenic intervals with corresponding regions in the human genome

Using the Virtual Comparative Map (VCMMap), we located regions of the human genome orthologous to the chromosome 12 and 16 congenic intervals (Kwitek et al., 2001). With the genomic coordinates corresponding to the congenic intervals, we identified human SNPs associated with 'non-insulin-dependent diabetes mellitus' and 'susceptibility to essential hypertension' using Ensembl's BioMart (Cunningham et al., 2015). In addition, we identified SNPs in genes with genome-wide significance (including those with borderline significance, i.e.  $P=5\times 10^{-7}$ ) using the NHGRI-EBI GWAS catalogue (<https://www.ebi.ac.uk/gwas/>) connected to the following search terms: blood pressure, blood pressure (age interaction), blood pressure (anthropomorphic measures interaction), blood pressure (smoking interaction), blood pressure measurement (cold pressor test), blood pressure measurement (high sodium and potassium intervention), blood pressure measurement (high sodium intervention), blood pressure measurement (low sodium intervention), blood pressure response to hydrochlorothiazide in hypertension, blood pressure variability, cardiac

hypertrophy, cardiac muscle measurement, cardiac repolarisation, cardiac structure and function, cardiovascular disease risk factors, cardiovascular heart disease in diabetics, diabetes-related insulin traits, diastolic blood pressure, diastolic blood pressure (alcohol consumption interaction), fasting glucose-related traits, fasting glucose-related traits (interaction with BMI), fasting insulin-related traits, fasting insulin-related traits (interaction with BMI), fasting plasma glucose, heart rate, hypertension, hypertension (young onset), insulin-related traits, left ventricular mass, QT interval, systolic blood pressure, systolic blood pressure (alcohol consumption interaction) and type 2 diabetes.

To test whether the congenic regions were enriched for orthologues to cardio-metabolic GWAS hits in humans, we used the above GWAS search results and information gathered from Ensembl, to establish the total number of genes within and outside the congenic regions.

### Statistical analysis

Data were analysed using Minitab 17 (Minitab Ltd, Coventry, UK). All physiological and qPCR data were analysed by one-way ANOVA followed by Fisher's least significant difference test.  $P$ -values in the PLINK analysis were considered significant with a nominal  $P$ -value  $<1\times 10^{-4}$ . SNV and GWAS enrichment analyses were performed by chi-squared analysis. Values are expressed as mean $\pm 95\%$  confidence intervals (CI), with values of  $P<0.05$  considered significant.

### Acknowledgements

The authors would like to thank Olga Boruc and the Whole Animal Physiology Imaging facility of the MRC Clinical Sciences Centre for use of the CLAMS.

### Competing interests

T.J.A. has received speaker honoraria from Illumina Inc. and consultancy fees from AstraZeneca.

### Author contributions

P.M.C. and O.H. designed, carried out, analysed experiments and wrote the manuscript. A.G.D., N.A., P.J.N., M.B. carried out experiments and contributed to the manuscript. M.P. and E.P. contributed to data and manuscript writing. T.J.A. and N.H. contributed to study design and wrote the manuscript.

### Funding

A.G.D., M.B., N.A. and P.M.C. are funded by an Advanced Grant ERC-2010-AdG\_20100317 (ELABORATE) from the European Research Council. M.P. was supported by grant 301/12/0696 from the Czech Science Foundation. N.H. and O.H. are funded by The Helmholtz Alliance ICeMED. P.J.N. is funded by the Medical Research Council. This work was funded by intramural funding from the MRC Clinical Sciences Centre to T.J.A., by a European Union EURATRANS award to T.J.A. and by an ERC Advanced Grant to T.J.A.

### Data availability

All data used for the SNV analysis are available from: [ftp://ftp.rgd.mcw.edu/pub/strain\\_specific\\_variants/Hermesen\\_et\\_al\\_40Genomes\\_Variants/](ftp://ftp.rgd.mcw.edu/pub/strain_specific_variants/Hermesen_et_al_40Genomes_Variants/). Phenotyping information was obtained from: <http://rgd.mcw.edu/>.

### Supplementary information

Supplementary information available online at <http://dmm.biologists.org/lookup/doi/10.1242/dmm.026716.supplemental>

### References

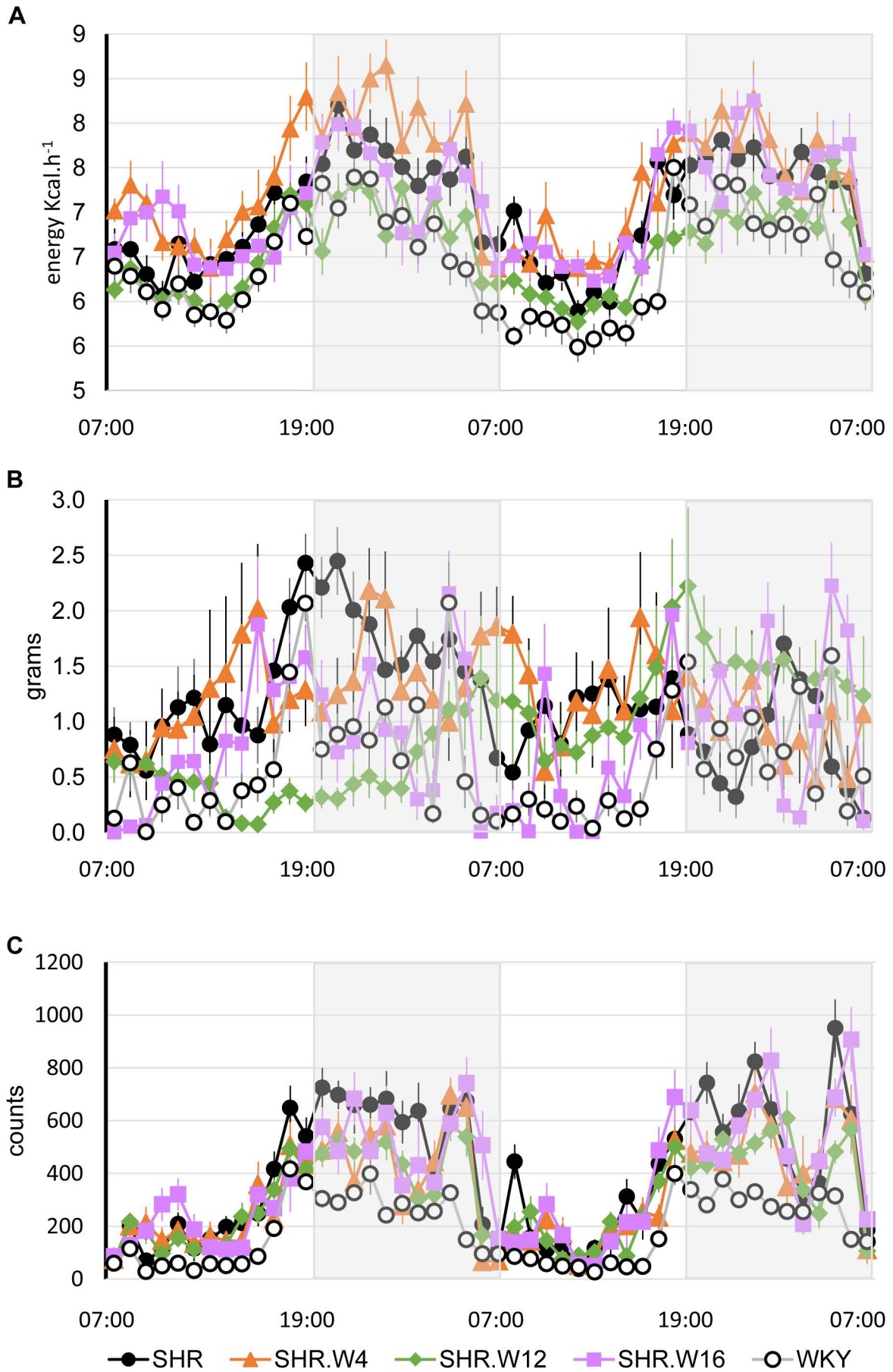
- Acunzo, J., Katsogiannou, M. and Rocchi, P. (2012). Small heat shock proteins HSP27 (HspB1), alphaB-crystallin (HspB5) and HSP22 (HspB8) as regulators of cell death. *Int. J. Biochem. Cell Biol.* **44**, 1622-1631.
- Aitman, T. J., Gotoda, T., Evans, A. L., Imrie, H., Heath, K. E., Trembling, P. M., Truman, H., Wallace, C. A., Rahman, A., Doré, C. et al. (1997). Quantitative trait loci for cellular defects in glucose and fatty acid metabolism in hypertensive rats. *Nat. Genet.* **16**, 197-201.
- Aitman, T. J., Glazier, A. M., Wallace, C. A., Cooper, L. D., Norsworthy, P. J., Wahid, F. N., Al-Majali, K. M., Trembling, P. M., Mann, C. J., Shoulders, C. C. et al. (1999). Identification of Cd36 (Fat) as an insulin-resistance gene causing defective fatty acid and glucose metabolism in hypertensive rats. *Nat. Genet.* **21**, 76-83.
- Aitman, T. J., Critser, J. K., Cuppen, E., Dominiczak, A., Fernandez-Suarez, X. M., Flint, J., Gauguier, D., Geurts, A. M., Gould, M., Harris, P. C. et al. (2008). Progress and prospects in rat genetics: a community view. *Nat. Genet.* **40**, 516-522.



- Atanur, S. S., Diaz, A. G., Maratou, K., Sarkis, A., Rotival, M., Game, L., Tschannen, M. R., Kaisaki, P. J., Otto, G. W., Ma, M. C. J. et al. (2013). Genome sequencing reveals loci under artificial selection that underlie disease phenotypes in the laboratory rat. *Cell* **154**, 691-703.
- Corpeleijn, E., van der Kallen, C. J. H., Kruijshoop, M., Magagnin, M. G. P., de Bruin, T. W. A., Feskens, E. J. M., Saris, W. H. M. and Blaak, E. E. (2006). Direct association of a promoter polymorphism in the CD36/FAT fatty acid transporter gene with Type 2 diabetes mellitus and insulin resistance. *Diabet. Med.* **23**, 907-911.
- Cunningham, F., Amode, M. R., Barrell, D., Beal, K., Billis, K., Brent, S., Carvalho-Silva, D., Clapham, P., Coates, G., Fitzgerald, S. et al. (2015). Ensembl 2015. *Nucleic Acids Res.* **43**, D662-D669.
- de Bruyne, M. C., Hoes, A. W., Kors, J. A., Hofman, A., van Bommel, J. H. and Grobbee, D. E. (1998). QTc dispersion predicts cardiac mortality in the elderly: the Rotterdam Study. *Circulation* **97**, 467-472.
- DeFronzo, R. A. (1988). Lilly lecture 1987. The triumvirate: beta-cell, muscle, liver. A collusion responsible for NIDDM. *Diabetes* **37**, 667-687.
- Diaz-Castroverde, S., Gómez-Hernández, A., Fernández, S., García-Gómez, G., Di Scala, M., González-Aseguinolaza, G., Fernández-Millán, E., González-Rodríguez, Á., García-Bravo, M., Chambon, P. et al. (2016). Insulin receptor isoform A ameliorates long-term glucose intolerance in diabetic mice. *Dis. Model. Mech.* **9**, 1271-1281.
- Eskens, B. J. M., Mooij, H. L., Cleutjens, J. P. M., Roos, J. M. A., Cobelens, J. E., Vink, H. and Vanteeffelen, J. W. G. E. (2013). Rapid insulin-mediated increase in microvascular glycocalyx accessibility in skeletal muscle may contribute to insulin-mediated glucose disposal in rats. *PLoS ONE* **8**, e55399.
- Evrengul, H., Dursunoglu, D., Kaftan, A., Kilicaslan, F., Tanriverdi, H. and Kilic, M. (2005). Relation of insulin resistance and left ventricular function and structure in non-diabetic patients with essential hypertension. *Acta Cardiol.* **60**, 191-198.
- Farook, V. S., Puppala, S., Schneider, J., Fowler, S. P., Chittoor, G., Dyer, T. D., Allayee, H., Cole, S. A., Arya, R., Black, M. H. et al. (2012). Metabolic syndrome is linked to chromosome 7q21 and associated with genetic variants in CD36 and GNAT3 in Mexican Americans. *Obesity* **20**, 2083-2092.
- Ferrannini, E., Buzzigoli, G., Bonadonna, R., Giorico, M. A., Oleggini, M., Graziadei, L., Pedrinelli, R., Brandi, L. and Bevilacqua, S. (1987). Insulin resistance in essential hypertension. *N. Engl. J. Med.* **317**, 350-357.
- Gagnon, K. B. and Delpire, E. (2013). Physiology of SLC12 transporters: lessons from inherited human genetic mutations and genetically engineered mouse knockouts. *Am. J. Physiol. Cell Physiol.* **304**, C693-C714.
- Gao, R., Zhang, J., Cheng, L., Wu, X., Dong, W., Yang, X., Li, T., Liu, X., Xu, Y., Li, X. et al. (2010). A Phase II, randomized, double-blind, multicenter, based on standard therapy, placebo-controlled study of the efficacy and safety of recombinant human neuregulin-1 in patients with chronic heart failure. *J. Am. Coll. Cardiol.* **55**, 1907-1914.
- Gobel, F. L., Norstrom, L. A., Nelson, R. R., Jorgensen, C. R. and Wang, Y. (1978). The rate-pressure product as an index of myocardial oxygen consumption during exercise in patients with angina pectoris. *Circulation* **57**, 549-556.
- He, J., Kelly, T. N., Zhao, Q., Li, H., Huang, J., Wang, L., Jaquish, C. E., Sung, Y. J., Shimmin, L. C., Lu, F. et al. (2013). Genome-wide association study identifies 8 novel loci associated with blood pressure responses to interventions in Han Chinese. *Circ. Cardiovasc. Genet.* **6**, 598-607.
- Hermesen, R., de Ligt, J., Spee, W., Blokzijl, F., Schäfer, S., Adami, E., Boymans, S., Flink, S., van Bortel, R., van der Weide, R. H. et al. (2015). Genomic landscape of rat strain and substrain variation. *BMC Genomics* **16**, 357.
- Hertle, E., Stehouwer, C. D. A. and van Greevenbroek, M. M. J. (2014). The complement system in human cardiometabolic disease. *Mol. Immunol.* **61**, 135-148.
- Hock, A. K., Vigneron, A. M. and Voudsen, K. H. (2014). Ubiquitin-specific peptidase 42 (USP42) functions to deubiquitylate histones and regulate transcriptional activity. *J. Biol. Chem.* **289**, 34862-34870.
- Hu, W. and Huang, Y. (2015). Targeting the platelet-derived growth factor signalling in cardiovascular disease. *Clin. Exp. Pharmacol. Physiol.* **42**, 1221-1224.
- Huang, G. N., Thatcher, J. E., McAnally, J., Kong, Y., Qi, X., Tan, W., DiMaio, J. M., Amatruda, J. F., Gerard, R. D., Hill, J. A. et al. (2012). C/EBP transcription factors mediate epicardial activation during heart development and injury. *Science* **338**, 1599-1603.
- Hulman, S., Falkner, B. and Chen, Y. Q. (1991). Insulin resistance in the spontaneously hypertensive rat. *Metabolism* **40**, 359-361.
- Hulman, S., Falkner, B. and Freyvogel, N. (1993). Insulin resistance in the conscious spontaneously hypertensive rat: euglycemic hyperinsulinemic clamp study. *Metabolism* **42**, 14-18.
- Irvin, M. R., Wineinger, N. E., Rice, T. K., Pawajski, N. M., Kabagambe, E. K., Gu, C. C., Pankow, J., North, K. E., Wilk, J. B., Freedman, B. I. et al. (2011). Genome-wide detection of allele specific copy number variation associated with insulin resistance in African Americans from the HyperGEN study. *PLoS ONE* **6**, e24052.
- Kaftan, H. A., Evrengul, H., Tanriverdi, H. and Kilic, M. (2006). Effect of insulin resistance on left ventricular structural changes in hypertensive patients. *Int. Heart J.* **47**, 391-400.
- Kmecova, J. and Klimas, J. (2010). Heart rate correction of the QT duration in rats. *Eur. J. Pharmacol.* **641**, 187-192.
- Koh, Y., Park, I., Sun, C.-H., Lee, S., Yun, H., Park, C.-K., Park, S.-H., Park, J. K. and Lee, S.-H. (2015). Detection of a distinctive genomic signature in rhabdoid glioblastoma, a rare disease entity identified by whole exome sequencing and whole transcriptome sequencing. *Transl. Oncol.* **8**, 279-287.
- Kraus, D. M., Elliott, G. S., Chute, H., Horan, T., Pfenninger, K. H., Sanford, S. D., Foster, S., Scully, S., Welcher, A. A. and Holers, V. M. (2006). CSMD1 is a novel multiple domain complement-regulatory protein highly expressed in the central nervous system and epithelial tissues. *J. Immunol.* **176**, 4419-4430.
- Kwitek, A. E., Tonellato, P. J., Chen, D., Gullings-Handley, J., Cheng, Y. S., Twigger, S., Scheetz, T. E., Casavant, T. L., Stoll, M., Nobrega, M. A. et al. (2001). Automated construction of high-density comparative maps between rat, human, and mouse. *Genome Res.* **11**, 1935-1943.
- Lambert, L. J., Challa, A. K., Niu, A., Zhou, L., Tucholski, J., Johnson, M. S., Nagy, T. R., Eberhardt, A. W., Estep, P. N., Kesterson, R. A., et al. (2016). Increased trabecular bone and improved biomechanics in an osteocalcin-null rat model created by CRISPR/Cas9 technology. *Dis. Model Mech.* **9**, 169-1179.
- Langley, S. R., Bottolo, L., Kunes, J., Zicha, J., Zidek, V., Hubner, N., Cook, S. A., Pravenec, M., Aitman, T. J. and Petretto, E. (2013). Systems-level approaches reveal conservation of trans-regulated genes in the rat and genetic determinants of blood pressure in humans. *Cardiovasc. Res.* **97**, 653-665.
- Lehar, S. M. and Bevan, M. J. (2006). T cells develop normally in the absence of both Deltex1 and Deltex2. *Mol. Cell Biol.* **26**, 7358-7371.
- Leprêtre, F., Vasseur, F., Vaxillaire, M., Scherer, P. E., Ali, S., Linton, K., Aitman, T. and Froguel, P. (2004). A CD36 nonsense mutation associated with insulin resistance and familial type 2 diabetes. *Hum. Mutat.* **24**, 104.
- Love-Gregory, L., Sherva, R., Sun, L., Wasson, J., Schappe, T., Doria, A., Rao, D. C., Hunt, S. C., Klein, S., Neuman, R. J. et al. (2008). Variants in the CD36 gene associate with the metabolic syndrome and high-density lipoprotein cholesterol. *Hum. Mol. Genet.* **17**, 1695-1704.
- Love-Gregory, L., Sherva, R., Schappe, T., Qi, J.-S., McCrea, J., Klein, S., Connelly, M. A. and Abumrad, N. A. (2011). Common CD36 SNPs reduce protein expression and may contribute to a protective atherogenic profile. *Hum. Mol. Genet.* **20**, 193-201.
- Lu, X., Wang, L., Lin, X., Huang, J., Charles Gu, C., He, M., Shen, H., He, J., Zhu, J., Li, H. et al. (2015). Genome-wide association study in Chinese identifies novel loci for blood pressure and hypertension. *Hum. Mol. Genet.* **24**, 865-874.
- Lundbaek, K. (1962). Intravenous glucose tolerance as a tool in definition and diagnosis of diabetes mellitus. *Br. Med. J.* **1**, 1507-1513.
- Lusis, A. J., Attie, A. D. and Reue, K. (2008). Metabolic syndrome: from epidemiology to systems biology. *Nat. Rev. Genet.* **9**, 819-830.
- Manolio, T. A., Collins, F. S., Cox, N. J., Goldstein, D. B., Hindorf, L. A., Hunter, D. J., McCarthy, M. I., Ramos, E. M., Cardon, L. R., Chakravarti, A. et al. (2009). Finding the missing heritability of complex diseases. *Nature* **461**, 747-753.
- Markel, P., Shu, P., Ebeling, C., Carlson, G. A., Nagle, D. L., Smutko, J. S. and Moore, K. J. (1997). Theoretical and empirical issues for marker-assisted breeding of congenic mouse strains. *Nat. Genet.* **17**, 280-284.
- Matsumoto, T., Urushido, M., Ide, H., Ishihara, M., Hamada-Ode, K., Shimamura, Y., Ogata, K., Inoue, K., Taniguchi, Y., Taguchi, T. et al. (2015). Small heat shock protein beta-1 (HSPB1) is upregulated and regulates autophagy and apoptosis of renal tubular cells in acute kidney injury. *PLoS ONE* **10**, e0126229.
- McDermott-Roe, C., Ye, J., Ahmed, R., Sun, X.-M., Serafin, A., Ware, J., Bottolo, L., Muckett, P., Cañas, X., Zhang, J. et al. (2011). Endonuclease G is a novel determinant of cardiac hypertrophy and mitochondrial function. *Nature* **478**, 114-118.
- McLean, J. A. and Tobin, G. (1987). *Animal and Human Calorimetry*. Cambridge: Cambridge University Press.
- Moak, S. L., Dougan, G. C., MarElia, C. B., Danse, W. A., Fernandez, A. M., Kuehl, M. N., Athanason, M. G. and Burkhardt, B. R. (2014). Enhanced glucose tolerance in pancreatic-derived factor (PANDER) knockout C57BL/6 mice. *Dis Model Mech* **7**, 1307-1315.
- Morrissey, C., Grieve, I. C., Heinig, M., Atanur, S., Petretto, E., Pravenec, M., Hubner, N. and Aitman, T. J. (2011). Integrated genomic approaches to identification of candidate genes underlying metabolic and cardiovascular phenotypes in the spontaneously hypertensive rat. *Physiol. Genomics* **43**, 1207-1218.
- Nabika, T., Ohara, H., Kato, N. and Isomura, M. (2012). The stroke-prone spontaneously hypertensive rat: still a useful model for post-GWAS genetic studies? *Hypertens. Res.* **35**, 477-484.
- Neckar, J., Silhavy, J., Zidek, V., Landa, V., Mlejnek, P., Simakova, M., Seidman, J. G., Seidman, C., Kazdova, L., Klevstvig, M. et al. (2012). CD36 overexpression predisposes to arrhythmias but reduces infarct size in spontaneously hypertensive rats: gene expression profile analysis. *Physiol. Genomics* **44**, 173-182.
- Pajvani, U. B., Shawber, C. J., Samuel, V. T., Birkenfeld, A. L., Shulman, G. I., Kitajewski, J. and Accili, D. (2011). Inhibition of Notch signaling ameliorates insulin resistance in a FoxO1-dependent manner. *Nat. Med.* **17**, 961-967.

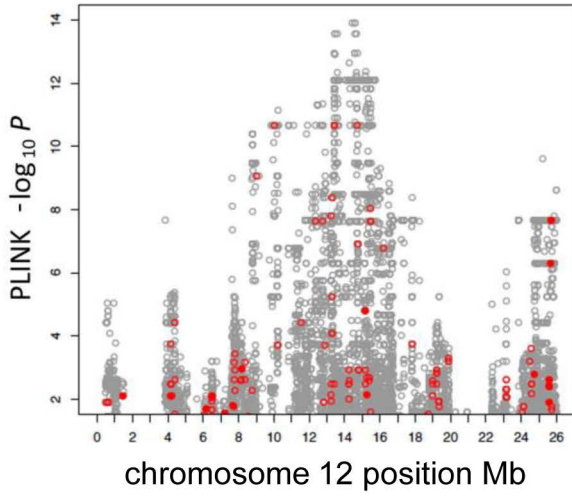
- Petretto, E., Mangion, J., Dickens, N. J., Cook, S. A., Kumaran, M. K., Lu, H., Fischer, J., Maatz, H., Kren, V., Pravenec, M. et al. (2006). Heritability and tissue specificity of expression quantitative trait loci. *PLoS Genet.* **2**, e172.
- Petretto, E., Sarwar, R., Grieve, I., Lu, H., Kumaran, M. K., Muckett, P. J., Mangion, J., Schroen, B., Benson, M., Punjabi, P. P. et al. (2008). Integrated genomic approaches implicate osteoglycin (Ogn) in the regulation of left ventricular mass. *Nat. Genet.* **40**, 546-552.
- Pietka, T. A., Schappe, T., Conte, C., Fabbrini, E., Patterson, B. W., Klein, S., Abumrad, N. A. and Love-Gregory, L. (2014). Adipose and muscle tissue profile of CD36 transcripts in obese subjects highlights the role of CD36 in fatty acid homeostasis and insulin resistance. *Diabetes Care* **37**, 1990-1997.
- Platzter, J., Engel, J., Schrott-Fischer, A., Stephan, K., Bova, S., Chen, H., Zheng, H. and Striessnig, J. (2000). Congenital deafness and sinoatrial node dysfunction in mice lacking class D L-type Ca<sup>2+</sup> channels. *Cell* **102**, 89-97.
- Pravenec, M., Zidek, V., Simakova, M., Kren, V., Krenova, D., Horky, K., Jachymova, M., Mikova, B., Kazdova, L., Aitman, T. J. et al. (1999). Genetics of Cd36 and the clustering of multiple cardiovascular risk factors in spontaneous hypertension. *J. Clin. Invest.* **103**, 1651-1657.
- Pravenec, M., Churchill, P. C., Churchill, M. C., Viklicky, O., Kazdova, L., Aitman, T. J., Petretto, E., Hubner, N., Wallace, C. A., Zimdahl, H. et al. (2008). Identification of renal Cd36 as a determinant of blood pressure and risk for hypertension. *Nat. Genet.* **40**, 952-954.
- Purcell, S. (2014). Plink - Whole genome association analysis toolset. <http://pngu.mgh.harvard.edu/~purcell/plink/index.shtml>: Center for Human Genetic Research.
- Qi, L., Qi, Q., Prudente, S., Mendonca, C., Andreozzi, F., di Pietro, N., Sturma, M., Novelli, V., Mannino, G. C., Formoso, G. et al. (2013). Association between a genetic variant related to glutamic acid metabolism and coronary heart disease in individuals with type 2 diabetes. *JAMA* **310**, 821-828.
- Rohrbach, S., Yan, X., Weinberg, E. O., Hasan, F., Bartunek, J., Marchionni, M. A. and Lorell, B. H. (1999). Neuregulin in cardiac hypertrophy in rats with aortic stenosis. Differential expression of erbB2 and erbB4 receptors. *Circulation* **100**, 407-412.
- Roman, M. J. and Devereux, R. B. (2014). Association of central and peripheral blood pressures with intermediate cardiovascular phenotypes. *Hypertension* **63**, 1148-1153.
- Šedová, L., Pravenec, M., Křenová, D., Kazdová, L., Zidek, V., Krupková, M., Liška, F., Křen, V. and Šeda, O. (2016). Isolation of a genomic region affecting most components of metabolic syndrome in a chromosome-16 congenic rat model. *PLoS ONE* **11**, e0152708.
- Sharma, A. K., Bharti, S., Ojha, S., Bhatia, J., Kumar, N., Ray, R., Kumari, S. and Arya, D. S. (2011). Up-regulation of PPARgamma, heat shock protein-27 and -72 by naringin attenuates insulin resistance, beta-cell dysfunction, hepatic steatosis and kidney damage in a rat model of type 2 diabetes. *Br. J. Nutr.* **106**, 1713-1723.
- Shaw, J. E., Sicree, R. A. and Zimmet, P. Z. (2010). Global estimates of the prevalence of diabetes for 2010 and 2030. *Diabetes Res. Clin. Pract.* **87**, 4-14.
- Simar, D., Jacques, A. and Caillaud, C. (2012). Heat shock proteins induction reduces stress kinases activation, potentially improving insulin signalling in monocytes from obese subjects. *Cell Stress Chaperones* **17**, 615-621.
- van Bon, B. W. M., Balciuniene, J., Fruhman, G., Nagamani, S. C. S., Broome, D. L., Cameron, E., Martinet, D., Roulet, E., Jacquemont, S., Beckmann, J. S. et al. (2011). The phenotype of recurrent 10q22q23 deletions and duplications. *Eur. J. Hum. Genet.* **19**, 400-408.
- Vasan, R. S., Glazer, N. L., Felix, J. F., Lieb, W., Wild, P. S., Felix, S. B., Watzinger, N., Larson, M. G., Smith, N. L., Dehghan, A. et al. (2009). Genetic variants associated with cardiac structure and function: a meta-analysis and replication of genome-wide association data. *JAMA* **302**, 168-178.
- Ventetuolo, C. E., Baird, G. L., Barr, R. G., Bluemke, D. A., Fritz, J. S., Hill, N. S., Klingler, J. R., Lima, J. A. C., Ouyang, P., Palevsky, H. I. et al. (2016). Higher estradiol and lower dehydroepiandrosterone-sulfate levels are associated with pulmonary arterial hypertension in men. *Am. J. Respir. Crit. Care. Med.* **193**, 1168-1175.
- Vos, T., Barber, R. M., Bell, B., Bertozzi-Villa, A., Biryukov, S., Bollinger, I., Charlson, F., Davis, A., Degenhardt, L., Dicker, D. et al. (2015). Global, regional, and national incidence, prevalence, and years lived with disability for 301 acute and chronic diseases and injuries in 188 countries, 1990-2013: a systematic analysis for the Global Burden of Disease Study 2013. *Lancet* **386**, 743-800.
- Wang, Y., Zhou, X. O., Zhang, Y., Gao, P. J. and Zhu, D. L. (2012). Association of the CD36 gene with impaired glucose tolerance, impaired fasting glucose, type-2 diabetes, and lipid metabolism in essential hypertensive patients. *Genet. Mol. Res.* **11**, 2163-2170.
- Wilson, C. G., Tran, J. L., Erion, D. M., Vera, N. B., Febbraio, M. and Weiss, E. J. (2016). Hepatocyte-specific disruption of CD36 attenuates fatty liver and improves insulin sensitivity in hfd-fed mice. *Endocrinology* **157**, 570-585.
- Wright, J. T., Jr, Williamson, J. D., Whelton, P. K., Snyder, J. K., Sink, K. M., Rocco, M. V., Reboussin, D. M., Rahman, M., Oparil, S., Lewis, C. E. et al. (2015). A randomized trial of intensive versus standard blood-pressure control. *N. Engl. J. Med.* **373**, 2103-2116.
- Yeboah, J., Sane, D. C., Crouse, J. R., Herrington, D. M. and Bowden, D. W. (2007). Low plasma levels of FGF-2 and PDGF-BB are associated with cardiovascular events in type II diabetes mellitus (diabetes heart study). *Dis. Markers* **23**, 173-178.
- Yu, J., Lin, J. H., Wu, X. R. and Sun, T. T. (1994). Uroplakins Ia and Ib, two major differentiation products of bladder epithelium, belong to a family of four transmembrane domain (4TM) proteins. *J. Cell Biol.* **125**, 171-182.
- Zeggini, E., Scott, L. J., Saxena, R., Voight, B. F., Marchini, J. L., Hu, T., de Bakker, P. I. W., Abecasis, G. R., Almgren, P., Andersen, G. et al. (2008). Meta-analysis of genome-wide association data and large-scale replication identifies additional susceptibility loci for type 2 diabetes. *Nat. Genet.* **40**, 638-645.
- Zhai, G., Teumer, A., Stolk, L., Perry, J. R. B., Vandenput, L., Coviello, A. D., Koster, A., Bell, J. T., Bhasin, S., Eriksson, J. et al. (2011). Eight common genetic variants associated with serum DHEAS levels suggest a key role in ageing mechanisms. *PLoS Genet.* **7**, e1002025.
- Zhu, X., Feng, T., Tayo, B. O., Liang, J., Young, J. H., Franceschini, N., Smith, J. A., Yanek, L. R., Sun, Y. V., Edwards, T. L. et al. (2015). Meta-analysis of correlated traits via summary statistics from GWASs with an application in hypertension. *Am. J. Hum. Genet.* **96**, 21-36.

### Supplementary information

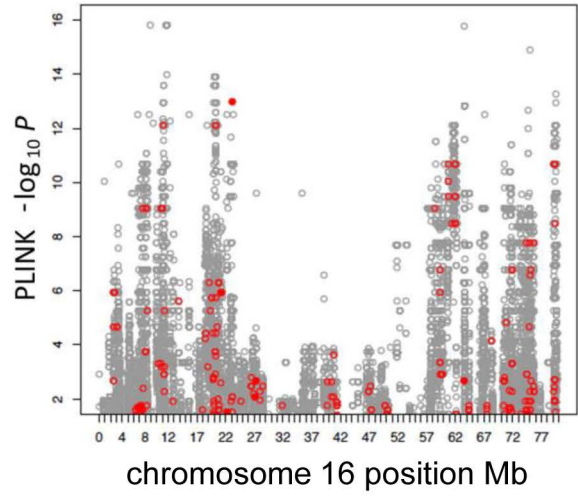


**Figure S1. Indirect calorimetry, activity and food intake during a 48 hour period** (A), Energy expenditure ( $\text{Kcal}\cdot\text{h}^{-1}$ ), (B), food intake (grams) and, (C), activity (counts) measured from parental and congenic strains. Mean values per hour per rat  $\pm 95\%$ CI. Shaded region indicates periods of darkness in the 12h:12h dark:light cycle.

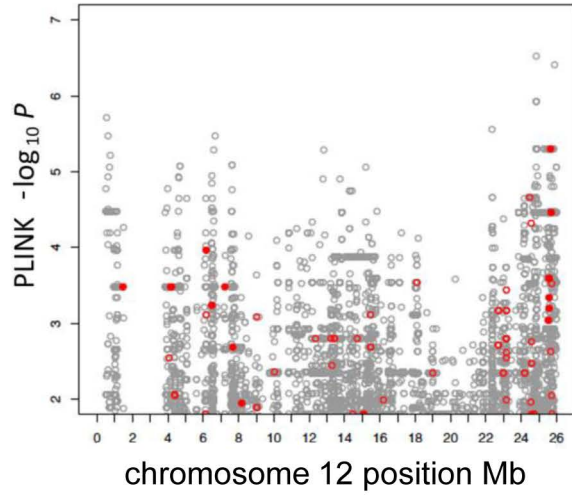
**A** insulin resistant v insulin sensitive



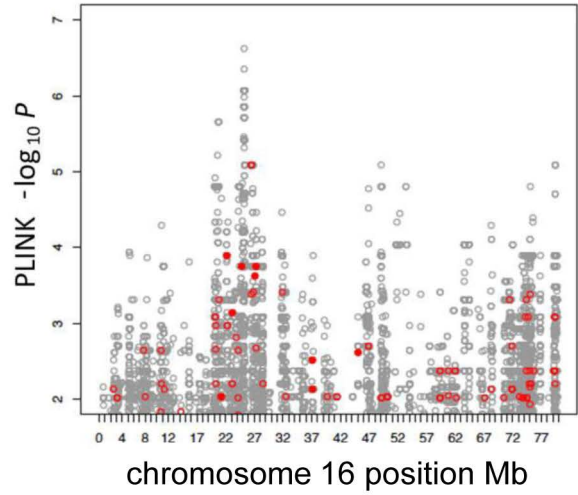
**B** insulin resistant v insulin sensitive



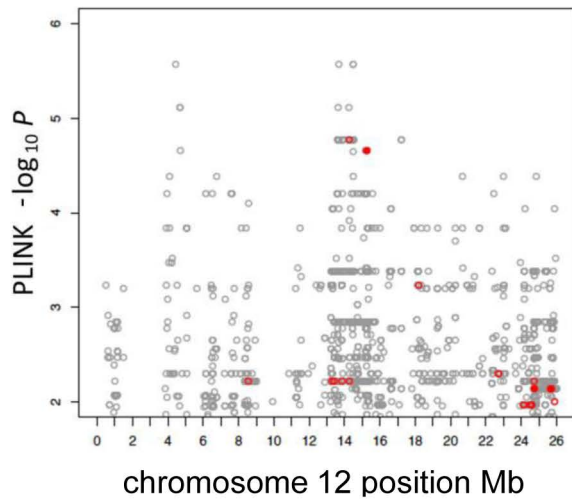
**C** hypertensive v normotensive



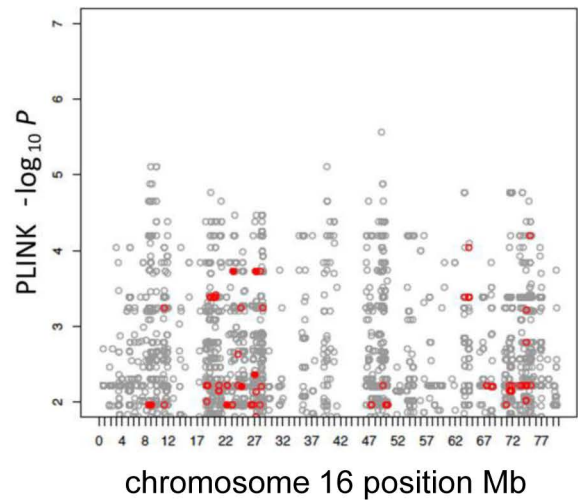
**D** hypertensive v normotensive



**E** hypertrophic v non hypertrophic



**F** hypertrophic v non hypertrophic



- meaningful variant in SHR v WKY
- meaningful variant
- intergenic variant

**Figure S2. Genomic location of single nucleotide variations associated with insulin resistance, hypertension and cardiac hypertrophy within the congenic intervals on chromosomes 12 and 16.** Individual plots of logarithmised p-values against genomic positions within QTL intervals on chromosomes 12 and 16, respectively. P-values less than 0.01 were plotted for the QTL on chromosome 12 (A,C,D) and for the QTL on chromosome 16 (B,D,F). Three different phenotypes are shown: insulin resistant versus insulin sensitive (A,B), hypertensive versus normotensive strains (C,D) and hypertrophic versus non-hypertrophic strains (E,F) Grey circles represent all SNVs that are located between individual gene start and end positions. All SNVs that are considered to have deleterious consequences are shown as red open circles. Deleterious SNVs that are found only in SHR strain but not in WKY are plotted as filled red circles.

**Table S1 Boundaries of rat chromosome 12 and 16 congenic regions with their syntenic regions in the human genome**

<b>Rat (Rn_3.4)</b>	<b>Human (GRCh37.p5)</b>
12:1-28,615,362	19:7,294,011-8,023,457
	13:27,746,033-33,677,272
	7:97,619,416-99,156,045
	7:6,012,870-6,746,566
	7:300,711-5,659,672
	7:99,613,219-99,812,010
	7:100,026,302-100,318,423
	7:100,782,547-100,882,893
	7:101,256,605-102,199,972
	7:75,368,279-76,090,972
	7:72,716,514-74,203,659
	7:69,063,905-71,877,360
	7:66,108,216-66,452,690
	7:65,419,800-65,579,805
	7:56,019,611-56,160,689
	12:131,510,000-132,195,635
16:819,225-80,047,126	10:80,828,792-81,205,383
	10:81,852,307-81,914,880
	3:52,434,513-57,743,174
	3:15,247,733-16,347,594
	10:47,000,568-51,026,325
	10:82,049,434-88,809,959
	19:16,284,286-16,771,938
	19:17,186,591-19,774,503
	8:18,081,198-20,103,676
	4:164,047,860-189,068,649
	8:12,612,992-17,913,925
	8:8,175,258-9,639,856
	8:29,190,579-42,263,415
	13:52,951,302-53,024,763
	13:52,585,630-52,706,779
8:1,656,642-6,666,038	

**Table S2. Microsatellite markers, primer sets and expected sizes from SHR and WKY, for genotyping during generation of congenic strains**

Marker	Primer sequence	Product size	
		SHR (bp)	WKY (bp)
D1Rat95	F 5' - ACACAGCTAAGACACGGGCT-3' R 5' - CAAATTACACTCTTGGGGCAA -3'	186	174
D1Rat27	F 5' - GGGCAAGCAAAGTACATGGT-3' R 5' - TCTCTCCAGCTGCAGGATTT-3'	184	158
D1Rat230	F 5' - AAAACAAACCTGCTTCAGGG-3' R 5' - GACTGCAGATGAACAAGCCA-3'	206	210
D1Rat51	F 5' - TTGCCTGAGAGACTGTGCC-3' R 5' - CCCTCAGTTC AAGAGTAACCTCA-3'	175	173
D1Rat74	F 5' - CACTTTCAAGATATCCTGTTGCTT-3' R 5' - CTCAGCAACCCCTAAGAGTG-3'	196	176
D1Rat156	F 5' - ATTCAATAAGCCTGGGGGAC-3' R 5' - ATGTTGGTGTGCTTCCCTGGT-3'	163	183
D2Rat4	F 5' - ACCAAATGGCCATGACAAAA-3' R 5' - TACAAGGTCCCTTCTGTGGC-3'	182	168
D2Rat184	F 5' - CCCAAAGCCAGTCAAGAGTC-3' R 5' - CTTCACTGACAAACTGCCAAA-3'	223	231
D2Rat234	F 5' - ATATTCAAGCTGGCTTCCCC-3' R 5' - GTAGAGCAAGATGGGGTGGA-3'	?	104
D2Rat138	F 5' - TCCATGCACTTGTACGATGC-3' R 5' - CCCATAGAACCTAATCTCTGAAGA-3'	247	233
D3Rat53	F 5' - TTGTCTCTGGTTCCAGGTCC-3' R 5' - GCTGGAAGGTACCTGTGGAA-3'	156	176
D3Rat186	F 5' - CCTGCATCCTCTTGTGGACT-3' R 5' - TTCTGTCAATTCATGTTATTGAA-3'	143	157
D3Rat217	F 5' - TGGCAATAACTCAAGGGCTC-3' R 5' - AGCCAAATAGGTGAGCTCCA-3'	176	184
D4Rat233	F 5' - GAGAGGTAGTCTCCCCAGG-3' R 5' - GCTCCACCTCCTTCTCCTCT-3'	222	208
D4mgh8	F 5' - AACTCCCTTCTTTCTTCCCC-3' R 5' - TGACCTCTGAATGCACATATCC-3'	122	106
D5Rat189	F 5' - CATGGGCTCAAGAAATCAA-3' R 5' - CCAAAATCCTCAGAGAAGGC-3'	128	135
D5Rat84	F 5' - TCACAGGTAATGGTAGAAAACGTT-3' R 5' - CTATGTGCAAAAACGCATGC-3'	150	131
D5Rat154	F 5' - CCAACTGCGATCCCTTTAAA-3' R 5' - CAACTGTCTCCAACCTCGCA-3'	220	218
D5Rat35	F 5' - CAGCCAGAGAAAAAGCCAAG-3' R 5' - GTGTGGGAGGGACTGAGAGA-3'	172	176
D6Rat108	F 5' - GGCAATATTCAATGAATCAACTTG-3' R 5' - CCAACCCGTCTTTTACCTGA-3'	141	150
D6Rat145	F 5' - GTGGAGGATGCACAAACAGA-3' R 5' - ATCCTGAAGTGCCAGGCTAA-3'	218	220
D6Rat132	F 5' - CCTCAAAAGGAGAGGTGTCAG-3' R 5' - GCCTGCTGTTTTGGAAGAAC-3'	205	215
D6Rat121	F 5' - CACATGTCTGTGCAACCCCTC-3' R 5' - GAGGATGTCTTTGCTTTGC-3'	130	142
D6Rat79	F 5' - CCCTACACACCTCTTTGGGA-3' R 5' - CGTAATCTCAAGGCTCACCC-3'	215	225
D7Rat35	F 5' - TCTTCCCACCAATCCTTTTG-3' R 5' - CCCTATGTTCAATCAAGTAGCCC-3'	150	127
D7Rat103	F 5' - CTGGTGCTTTTGGGTCTGTT-3' R 5' - GTGTCAAACCTGTGGGGATCC-3'	210	202
D7Rat141	F 5' - TCCACCCTTAGAAAGCACAGA-3' R 5' - CTGCTTTTCTGGGAGACTGG-3'	134	119
D7Rat128	F 5' - GCTTCTGGGGCACCTATACT-3' R 5' - TTAAGGCCCTTG CAGATTT-3'	264	250
D7Rat117	F 5' - CAGTTGGCACACTGCTTGTT-3' R 5' - TTCTGTGCCCTTTAACACCC-3'	130	106
D8Rat77	F 5' - TGCAGATTATTGAGGTAGCATTG-3' R 5' - ACCTGTGCGTAATCACACCT-3'	216	200
D8Rat164	F 5' - GAGGTATCCAAGGCAGTGGA-3' R 5' - CGTTATGCTGCCAGGATAG-3'	178	176
D8Rat156	F 5' - AACCATTTCGTCGCACACAC-3' R 5' - ACATTCAAAACAGTCCATTCTTTAT-3'	200	190



D8Rat205	F 5' - CATGTAGGAACTTTCTATCACCCA-3'	222	230
	R 5' - TGTGTATCTCTGTCTGTCTCTGTTG-3'		
D8mgh1	F 5' - TTGTCTGTAAGTATGCACATGTGG-3'	113	109
	R 5' - GATGAGCAGGGGCATGTC-3'		
D8Rat71	F 5' - TAGGGACTGCCTGTGTAGGG -3'	244	242
	R 5' - GGCTTTAGTGGGTGGACAAA-3'		
D9Rat135	F 5' - GCCACGTCATCATGACAAAAC-3'	141	128
	R 5' - TCCGGTCACATGATTTCTGA-3'		
D9Rat26	F 5' - AACCTGCAGACAAGCACCTC-3'	145	141
	R 5' - ACTCGTGACCAAAGTCCCAG-3'		
D9Rat1	F 5' - GATCTCACAAACATGCACGC-3'	146	135
	R 5' - AACTGTGGGTGAGAAATTTCTGTT-3'		
D10Rat45	F 5' - TTCCTGGAACAGTGGGAAAAC-3'	116	128
	R 5' - TTGCATACACATAGAAAACATGCA-3'		
D10mgh6	F 5' - CCTGCCTAAGTAATACAGTGGTC-3'	145	139
	R 5' - CCAGACCTTGTATGCTGGGT-3'		
D11mit1	F 5' - GACACAGACATACATGCACAACA-3'	139	123
	R 5' - AATGAAAAAGGAAACAGAGTCTGG-3'		
D11Rat37	F 5' - GGCATAAGGCCAAGCACATA-3'	154	164
	R 5' - TTTTATCCTGCCTTAGGAGATACAT-3'		
D13Rat88	F 5' - AGCAAGGTGTGAAGCCTGAT-3'	212	234
	R 5' - TACAGCAAAAAGGGTTGAGG-3'		
D13Rat32	F 5' - CATGCCTCACCTCCAACAC-3'	134	110
	R 5' - TGGTACAATCTACTCGAGCAGG-3'		
D14Rat55	F 5' - CACAAATTTCAACCTTGGGC-3'	222	232
	R 5' - GCAAAATTTTGATGGGTTTG-3'		
D15Rat123	F 5' - CCCCTACATCCATGGCATAAC-3'	126	130
	R 5' - TTCCCCCTCTTGTCTTCTTCT-3'		
D15Rat106	F 5' - AAACCTGTGGTCTCTACACACAG-3'	221	185
	R 5' - GCCACTACCCCAATTGGACT-3'		
D17Rat12	F 5' - GCCTTCATTAGAAAAGTAAAAGTAAA-3'	182	161
	R 5' - GGCAAAAGGACAGAGGATGA-3'		
D17Rat79	F 5' - ACAGGTGCTTCTGCCTAGGA-3'	190	204
	R 5' - TCCAAAATATGCCTTTCTAAAACAA-3'		
D17Rat52	F 5' - GGCGGTGGAATGATTAAA-3'	178	157
	R 5' - TGCTGCGATTGTACGTGTG-3'		
D18Rat48	F 5' - CTGGCCTTCATGATGTCTACA-3'	154	150
	R 5' - GCCCAGAATGAAGTTTATTCATTT-3'		
D18Rat61	F 5' - TCCCAGTGTTTGCTAGACCA-3'	264	238
	R 5' - AATCAAGAGGCTGGGACTGA-3'		
D18Rat76	F 5' - TTGTTTCCAATGTGGTATGGA-3'	124	120
	R 5' - CCCTGTCACCCTGTCTCTGT-3'		
D19mit7	F 5' - AGGGCTTTGCTGAATGCTTA-3'	119	113
	R 5' - AGAGTGGTGGTGAAGTGGG-3'		
D20Rat46	F 5' - GGCAAAACACCAATGCCTAT-3'	150	170
	R 5' - AAGTACTGAGTGGGCTGCGT-3'		
D20Rat70	F 5' - TCATGTAGTTTTGTCTACACTGCTT-3'	184	194
	R 5' - CCGGTCATTGAAGTTAGCCA-3'		
D20Rat29	F 5' - GAGGCTCCAGGACTCAACAG-3'	231	241
	R 5' - CCTTCCATAGACCTATAGCGGA-3'		

**Table S3. Microsatellite markers and their primers used for genotyping SHR.W4, SHR.W12 and SHR.W16**

Marker	Primer sequence	Label	SHR (bp)	WKY (bp)
D4Rat143	F 5' -TATGGAGGGACCCCTACTCC-3' R 5' -GGACTCTGCCTTCCTCTGAA-3'	NED	120	126
D4Rat10	F 5' -TGCATTAGTCAGGGGTACAAA-3' R 5' -AACTCTGCCTCTGGACGAAA-3'	NED	171	169
D4Rat126	F 5' -CATTCCTGTGCCACTCAAGA-3' R 5' -GCAGGTAAGAAAAGCAAGGC-3'	6FAM	123	131
D12Rat89	F 5' -GCAGTGAGAGACAGATGTGCA-3' R 5' -CCTTGAAATTGGTTCTTGGC-3'	NED	148	142
D12Rat1	F 5' -TGGGTGGATTCTTGAGGATC-3' R 5' -GCTAGTCCAGGGATGCTGAC-3'	6FAM	128	131
D12Rat63	F 5' -TTCTTCCACTGTCTCCGCTT-3' R 5' -TGAGGCTTCAGAGGGACTGT-3'	NED	179	166
D12rat43	F 5' -TCCCACAAGTTCTCTGTGCA-3' R 5' -CTCACTATGGCCTGGACCTT-3'	NED	321	241
D12Mgh1	F 5' -ACACATGCAACCACGCAC-3' R 5' -CCCCAGTTCTGGTGACAATT-3'	6FAM	136	140
D12Mgh2	F 5' -TGCCATGGTACACATGCAC-3' R 5' -CCCTGATAGGAATACCTTTTTTCA-3'	6FAM	157	149
D16Mit2	F 5' -AACGAGGGGAAATAAGCACC-3' R 5' -ATCCAAACCTGACATCTGGC-3'	6FAM	169	163
D16Mgh3	F 5' -GCCACTCTGGGGTGATTTTA-3' R 5' -AACCCAGAACCTGAGAGGT-3'	6FAM	227	215
D16Mgh1	F 5' -GACCTCCAGGATTGGTGAGA-3' R 5' -ACAACCCATGAGGCAGACAG-3'	NED	240	233
D16Rat67	F 5' -TGTCACTTACCTGTGGCAGC-3' R 5' -GGCATAAGATGAGGCTAACGA-3'	6FAM	232	253
D16Rat60	F 5' -TGAATTTTGAAAGGAAAGGCA-3' R 5' -CTCGAGTTTGGGGAAATGAA-3'	NED	137	139
D16Rat15	F 5' -ATCGGTAAACAAATCGCTGG-3' R 5' -TGGCATCTTTCGCTTAGACA-3'	NED	151	143

**Table S4. Chromosome 12 and 16 candidate gene QTT phenotypes and eQTL status**

Gene	Chromosome	QTT description	R <sup>2</sup> *	P-value*	Reported <i>cis</i> -eQTL tissue*
<i>Zkscan5</i>	12:13,224,021- 13,245,216:-1	Kidney: Systolic blood pressure mm Hg	0.58	0.0008	adrenal, aorta, heart, fat, kidney, liver, skeletal muscle
<i>Usp42</i>	12:14,904,019- 14,922,553:1	Adrenal: Serum cysteinylglycine	0.66	0.0004	-
<i>Hspb1</i>	12:25,837,084- 25,838,661:-1	Liver: Fat cell volume.	-0.74	2.3x10 <sup>-5</sup>	skeletal muscle
<i>Pdgfr1</i>	16:54,098,419 - 54,161,461:-1	Left ventricle: Delta captopril effects	-0.60	0.0009	heart

QTT, quantitative trait transcript; eQTL, expression quantitative trait locus.  
\*data from Langley et al 2013.

**Table S5. Human GWAS genes for cardio-metabolic traits located in congenic regions on rat chromosome 12 and 16**

Associated gene	Disease/trait	Strongest GWAS SNPs	Human gene location (GRCh38.p5)	Rat gene location (Rnor_5.0)
<i>Chromosome 12 congenic region</i>				
<i>FRY</i>	Blood pressure (smoking interaction)	rs95333282	13:32,031,300 – 13:32,299,122	12:7,565,891 – 12:7,925,464
<i>INSR</i>	Insulin resistance	rs1799816	19:7,112,255 – 19:7,294,034	12:3,848,670 – 12:3,989,302
<i>PDX1</i>	Type 2 diabetes	rs137852783, rs137852784 rs137852785, rs137852786	13:27,920,020 – 13:27,926,231	12: 11,609,488 – 12:11,614,655
<i>RNF6</i>	Type 2 diabetes	rs10507349	13:26,132,115 – 13:26,222,493	12:12,676,145 – 12,685,173
<i>SLC12A9</i>	Hypertension, type 2 diabetes	rs7801190	7:100,826,820 – 7:100,867,009	12:24,499,476 – 12:24,465,924
<i>MLXIPL</i>	Metabolic syndrome	rs13226650	7:73,593,194 – 7:73,624,543	12:26,588,200 – 12:26,620,779
<i>Chromosome 16 congenic region</i>				
<i>CACNA1D</i>	Electrocardiographic traits Systolic blood pressure Insulin resistance/response	rs10452033, rs9810888, rs1401492	3:53,494,65 – 3:53,813,733	16:6,044,524 – 16:6,339,170
<i>GRID1</i>	LV wall thickness	rs7910620	10:85,599,555 – 10:86,366,493	16:9,495,903 – 16:12,273,26
<i>NRG3</i>	Cardiac hypertrophy	rs1484170	10:81,875,298 – 10:82,989,979	16:15,661,430 – 16:16,817,319
<i>LPL</i>	Metabolic syndrome	rs268, rs295, rs301, rs2197089, rs10096633, rs7841189, rs2083637, rs1441756	8:19,901,717 – 8:19,967,258	16:22,431,494 – 16:22,455,871
<i>MARCH1</i>	Type 2 diabetes	rs3792615	4:163,524,298 – 4:164,384,050	16:24,882,375 – 16:25,407,999
<i>MSMO1</i>	Insulin-related traits	rs17046216	4:165,327,623 – 4:165,343,160	16:26,738,367 – 16:26,754,806
<i>KLKB1</i>	Metabolic traits	rs4253252	4:186,208,979 – 4:186,258,471	16:49,875,019 – 16:49,898,363
<i>PPP1R3B</i>	Fasting insulin/glucose related traits (interaction with BMI)	rs48411132	8:9,136,255 – 8:9,151,574	16:60,089,267 – 16:60,101,512
<i>KCNU1</i>	Insulin resistance/response	rs2407103	8:36,784,324 – 8:36,936,128	16:70,577,547 – 16:70,663,252
<i>ZMAT4</i>	Fasting plasma glucose	rs2722425	8:40,530,590 – 8:40,897,883	16:72,402,519 – 16:72,450,584
<i>ANK1</i>	Type 2 diabetes	rs516946, rs515071	8:41,653,220 – 8:41,896,762	16:73,314,002 – 16:73,459,822
<i>CSMD1</i>	Blood pressure measurement (sodium intervention) Insulin resistance/response	rs2627282, rs2407314	8:2,935,353 – 8:4,994,972	16:76,755,073 – 16:78,434,380
<i>ARHGEF7</i>	Homeostasis model assessment of insulin resistance (interaction)	rs12853515	13:111,114,559 – 13:111,305,737	16: 82,479,277 – 16:82,605,606