

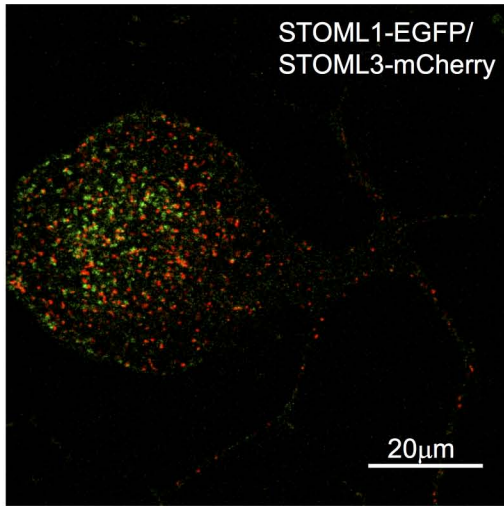
Supplementary Figure 1 STOML1 and STOML3 co-localisation

Example of STOML1 and STOML3 colocalization in a DRG neurone after co-transfection of a STOML3-mCherry and EGFP-STOML1 plasmid into DRG neurones using the Amaxa system. Co-localisation was analysed using the ImageJ plug-in JACoP. (A) an overlay of two separate confocal acquisition images. (B) A co-localisation mask based on distance between centres of mass calculated for two channels.

Supplementary Table 1 DRG neurone cell diameters. The average DRG neurone diameter for each type of response at every pH, for both wild type and STOML1^{-/-} neurones is given.

	Wild type		STOML1 ^{-/-}	
	Diameter (μm)	<i>n</i>	Diameter (μm)	<i>n</i>
6T	19.72 \pm 0.68	4	19.74 \pm 0.83	5
6S	19.65 \pm 0.30	38	19.70 \pm 0.30	53
5T	19.16 \pm 0.38	15	18.99 \pm 0.32	25
5S	19.95 \pm 0.36	28	20.26 \pm 0.40	33
4T	18.77 \pm 0.26	18	19.21 \pm 0.32	38
4S	20.57 \pm 0.45	22	20.93 \pm 0.45	20

A



B

