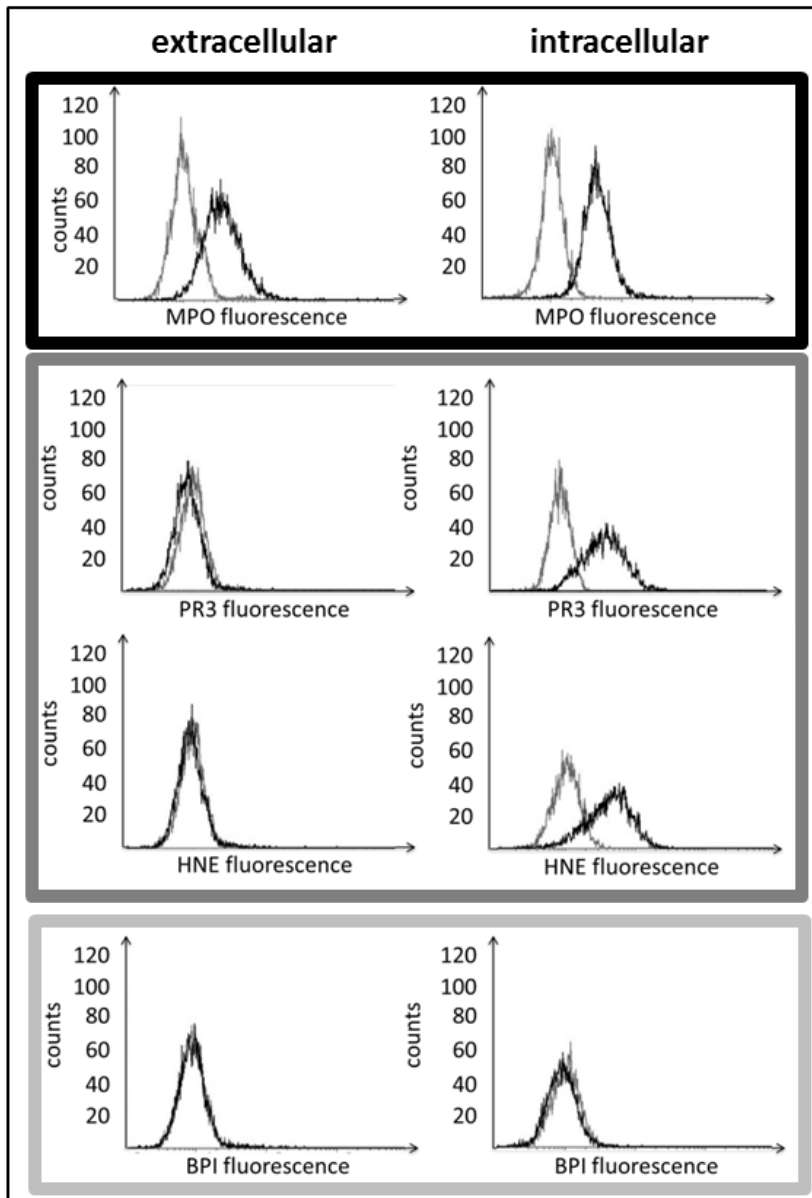


Suppl.Fig.



Supplementary Figure. Neutrophil granule protein transfer to the EC surface or intracellular acquisition by EC using flow cytometry. Neutrophils were incubated with EC for 30 min and granule protein transfer was assessed in live cells (extracellular) and after cell permeabilization (intracellular), using antibodies to specific neutrophil proteins as indicated. The experiments were repeated 3 times and a typical example is shown. MPO was detected on the EC surface and intracellularly, PR3 and HNE were found only intracellularly, and BPI was not transferred at all.